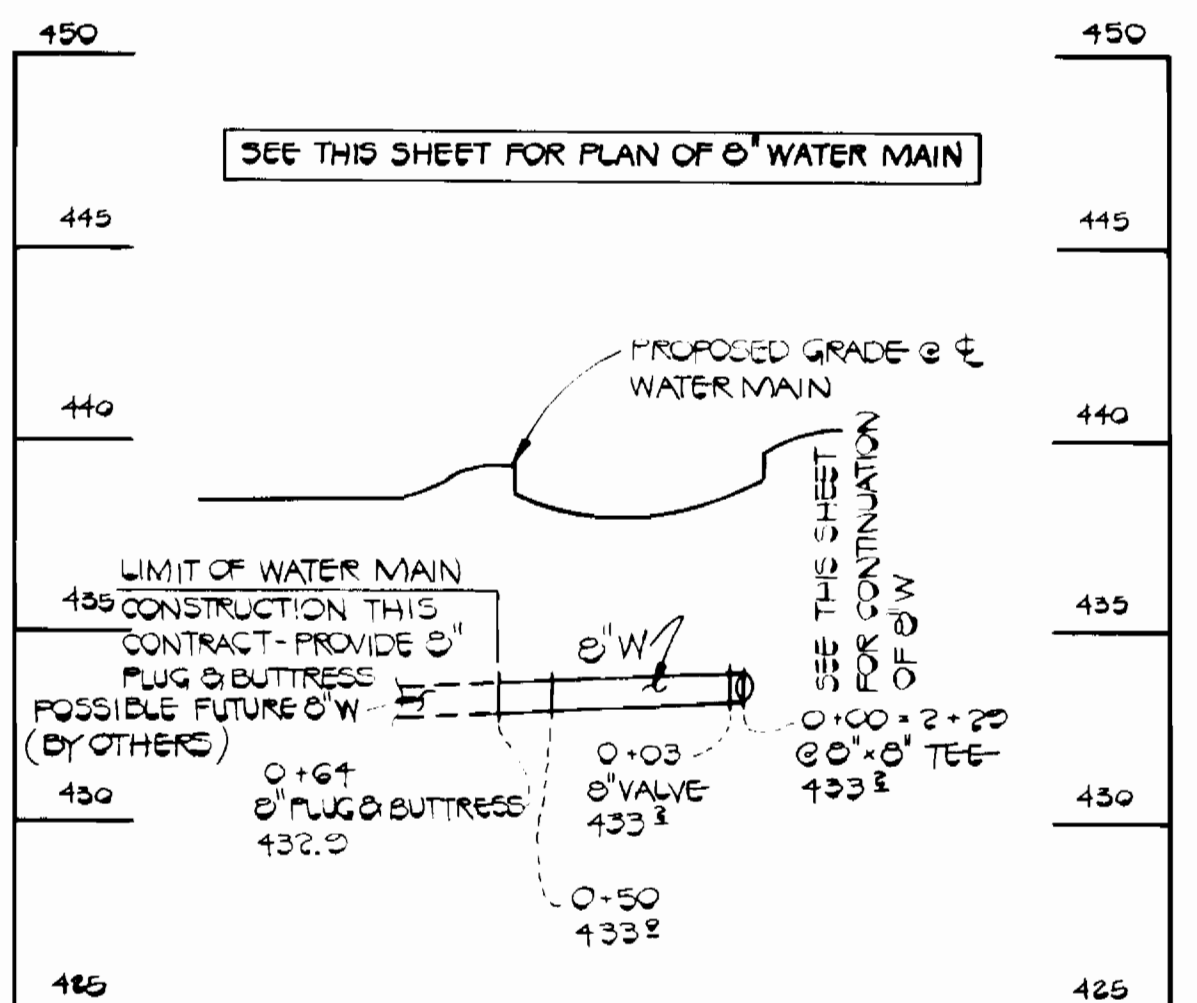


PROFILE: SEWER MAIN

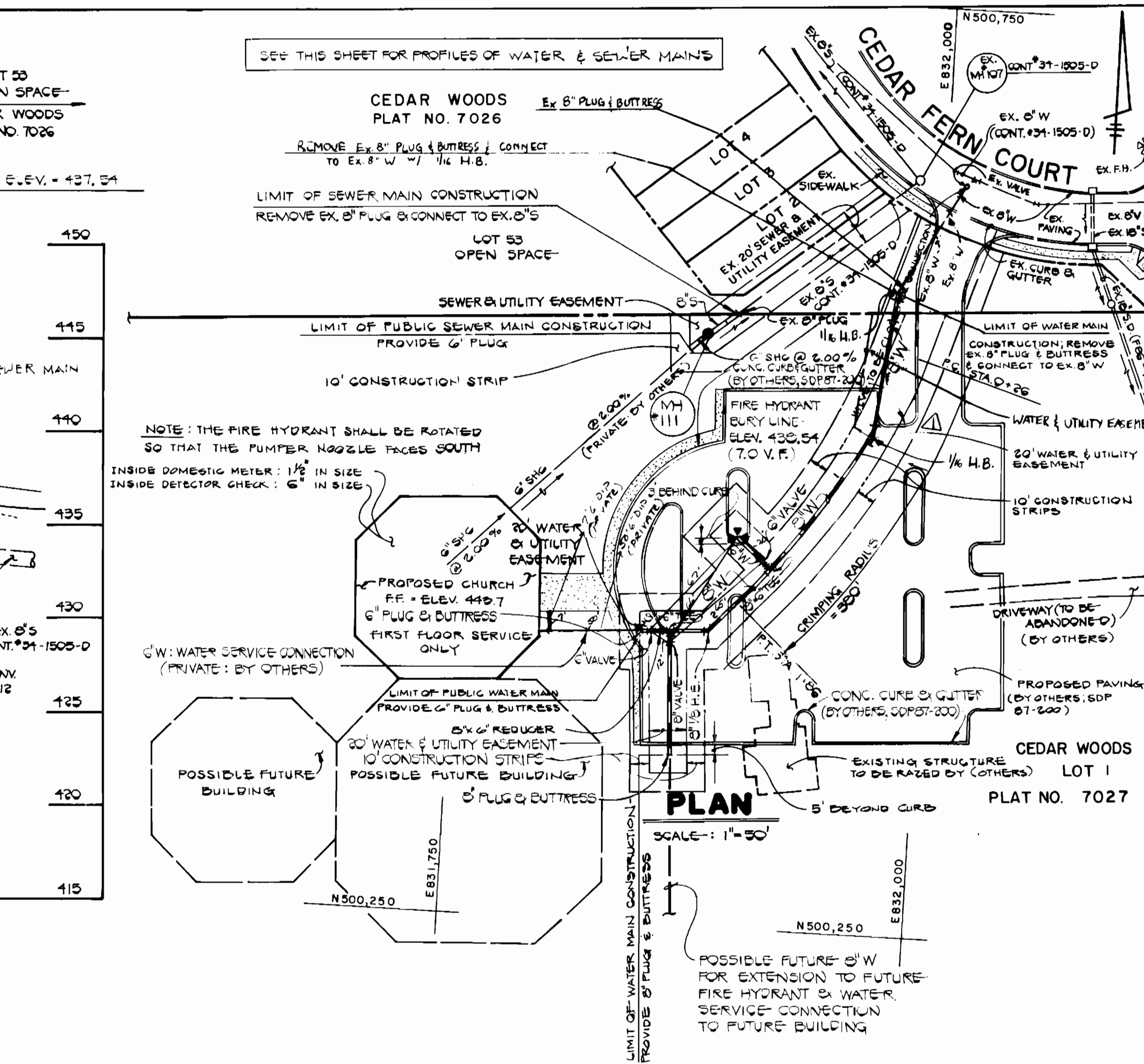
SCALE: 1" = 50' HORIZ.
1" = 5' VERT.



PROFILE: 8" WATER MAIN FROM TEE @ STA 2+22

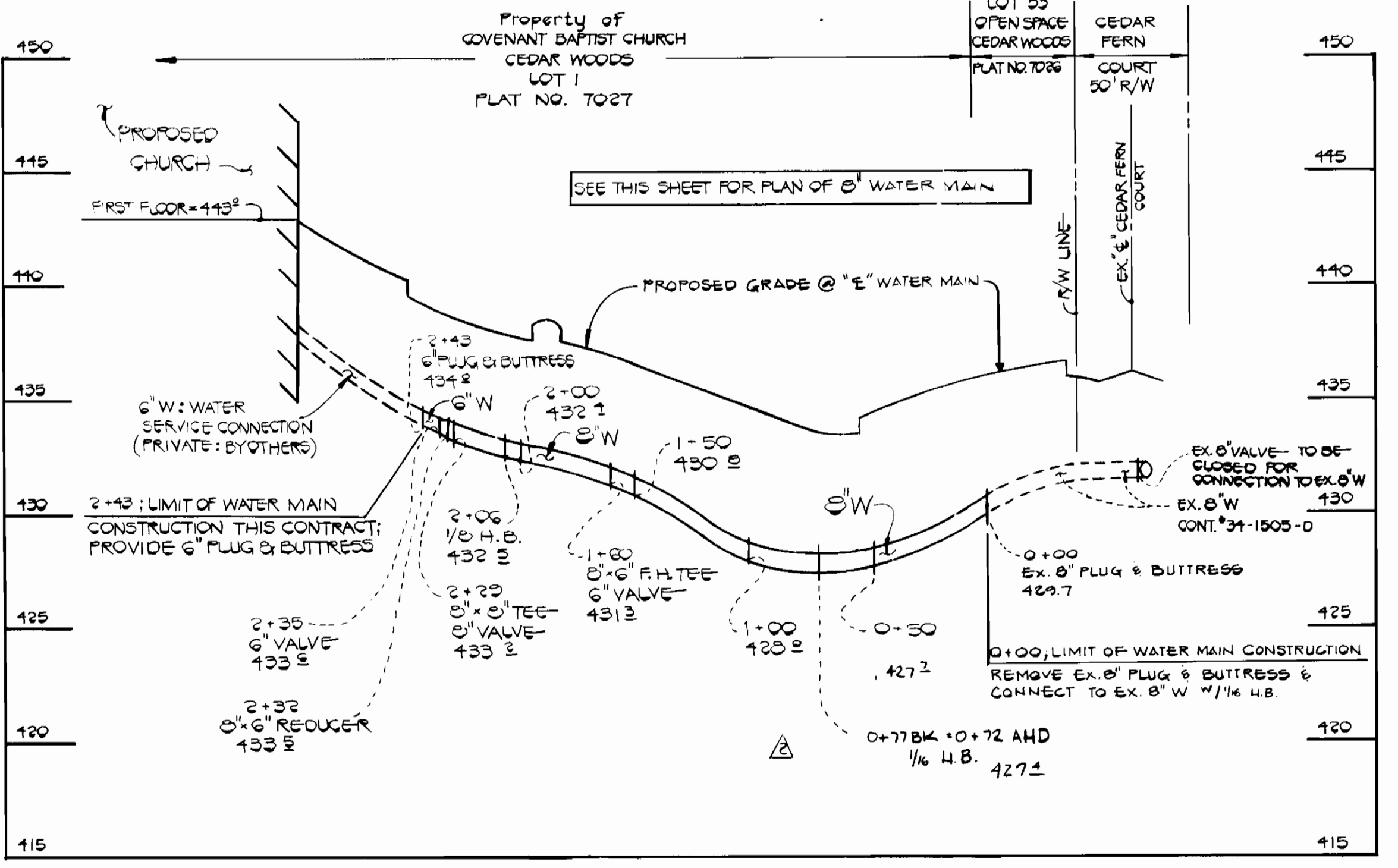
SCALE: 1" = 50' HORIZ.
1" = 5' VERT.

| QUANTITIES | | | | |
|---------------|-----------|------------|---------------|---------------------|
| ITEM | ESTIMATED | "AS-BUILT" | SUPPLIER | MANUFACTURER |
| 8" WATER | 200 L.F. | 300 L.F. | CONCRETE PIPE | Griffin |
| 8" WATER | 20 L.F. | 20 L.F. | " | " |
| 8" VALVES | 1 EACH | 1EA | " | Kennedy |
| 8" VALVES | 1 EACH | 1EA | " | " |
| 8"x6" REDUCER | 1 EACH | 1EA | " | Griffin |
| 8" SEWER | 10 L.F. | 9 L.F. | " | " |
| MANHOLES | 1 EACH | 1EA | " | ALLANVILLE CONCRETE |
| 8" SEWER | 12 L.F. | 12 L.F. | " | " |
| F.H. 8" VALVE | 1 EACH | 1EA | " | Kennedy |



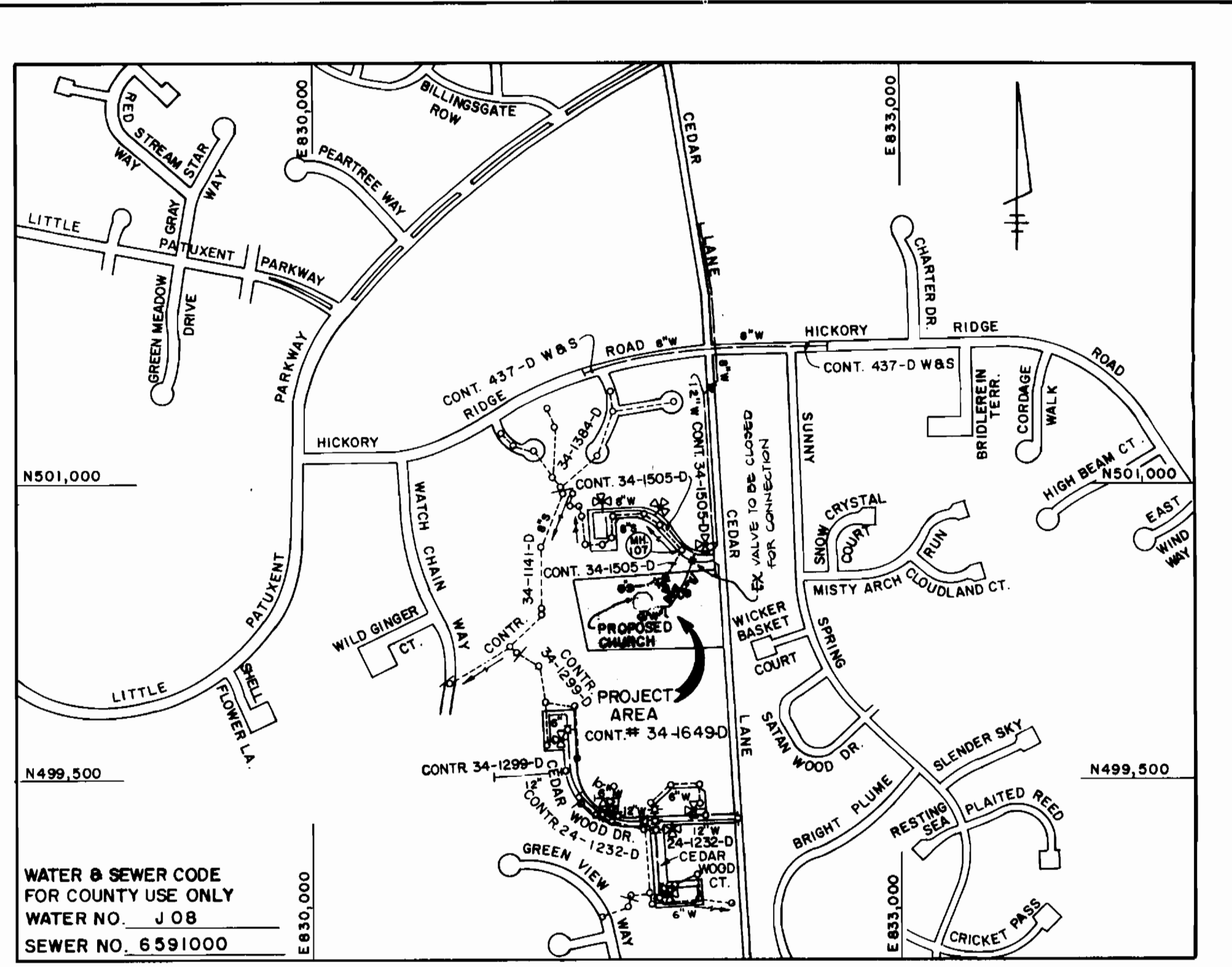
PLAN

SCALE: 1" = 50'



PROFILE: WATER MAIN

SCALE: 1" = 50' HORIZ.
1" = 5' VERT.



VICINITY MAP

SCALE: 1" = 600'

| | |
|--------------------------------|-----------------|
| TYPE OF BUILDING | COMMERCIAL |
| NUMBER OF LOTS | (BUILDABLE) |
| NO. OF WATER HOUSE CONNECTIONS | 1 |
| NO. OF SEWER HOUSE CONNECTIONS | 1 |
| DRAINAGE AREA | MIDDLE PATUXENT |

GENERAL NOTES

- APPROXIMATE LOCATION OF EXISTING MAINS ARE SHOWN. THE CONTRACTOR SHALL TAKE ALL NECESSARY PRECAUTIONS TO PROTECT EXISTING MAINS AND SERVICES AND MAINTAIN UNINTERRUPTED SUPPLY. ANY DAMAGE INCURRED SHALL BE REPAIRED IMMEDIATELY TO THE SATISFACTION OF THE ENGINEER AT THE CONTRACTOR'S EXPENSE.
- ALL HORIZONTAL CONTROLS ARE BASED ON MARYLAND STATE COORDINATES.
- ALL VERTICAL CONTROLS ARE BASED ON U.S.G.S. DATUM.
- ALL PIPE ELEVATIONS SHOWN ARE INVERT ELEVATIONS.
- CLEAR ALL UTILITIES BY A MINIMUM OF 6'.
- CONTRACTOR SHALL NOTIFY THE FOLLOWING UTILITIES OR AGENCIES AT LEAST FIVE (5) WORKING DAYS BEFORE STARTING WORK SHOWN ON THESE PLANS:
STATE HIGHWAY ADMINISTRATION - 531-5533
BALTIMORE GAS & ELECTRIC COMPANY - CONTRACTOR SERVICES: 850-4620
BALTIMORE GAS & ELECTRIC COMPANY - UNDER GROUND DAMAGE CONTROL: 859-9004
BALTIMORE GAS & ELECTRIC COMPANY - TROUBLE SHOOTING: 298-9001
MISS UTILITY: 1-559-0100
CHESAPEAKE & POTOMAC TELEPHONE COMPANY: 1-800-257-7777
BUREAU OF UTILITIES - HOWARD COUNTY: 992-2366
- TREES ARE TO BE PROTECTED FROM DAMAGE TO MAXIMUM EXTENT. TREES LOCATED WITHIN THE CONSTRUCTION STRIP ARE NOT TO BE REMOVED OR DAMAGED BY THE CONTRACTOR.
- CONTRACTOR SHALL REMOVE TREES, STUMPS AND ROOTS ALONG LINE OF EXCAVATION AS DIRECTED BY THE ENGINEER. PAYMENT FOR SUCH REMOVAL SHALL BE INCLUDED IN THE UNIT PRICE BID FOR CONSTRUCTION OF THE MAIN.
- PLACE REGULATION "MEN WORKING" AND WARNING SIGNS AS REQUIRED TO COMPLY WITH MARYLAND STATE HIGHWAY ADMINISTRATION MANUAL OF TRAFFIC CONTROL FOR HIGHWAY CONSTRUCTION AND MAINTENANCE OPERATIONS.
- ALL SEWER MAINS SHALL BE: C.S.P.X., R.C.S.P., V.C.P.X., ACP CLASS 2400 OR PVC UNLESS OTHERWISE NOTED.
- CONTRACTOR SHALL PROVIDE A JOINT IN ALL SEWER MAINS WITHIN 2'-0" OF EXTERIOR MANHOLE WALLS.
- ALL MANHOLES SHALL BE 4'-0" INSIDE DIAMETER UNLESS OTHERWISE NOTED.
- MANHOLES SHOWN WITH 12" AND 16" WALLS ARE BRICK MANHOLES ONLY.
- ALL WATER MAINS TO BE D.I.P., CLASS 52 UNLESS OTHERWISE NOTED.
- TOP OF WATER MAINS TO HAVE A MINIMUM OF 3'-0" COVER UNLESS OTHERWISE NOTED.
- VALVES ADJACENT TO TEES SHALL BE STRAPPED TO TEES.
- BURY LINE ELEVATIONS ON FIRE HYDRANTS SHALL BE SET TO THE ELEVATIONS SHOWN ON THE DRAWINGS. ALL FIRE HYDRANTS SHALL BE STRAPPED AND BUTTRESSED WITH CONCRETE IN ACCORDANCE WITH STANDARD DETAIL SOIL AROUND THE FIRE HYDRANT TO BE CONTRACTED IN ACCORDANCE WITH SECTION 1003 AND 1008 OF THE STANDARD SPECIFICATIONS.
- ALL WATER HOUSE CONNECTIONS SHALL BE FOR AN INSIDE METER SETTING (STD DETAIL W 3.21)
- THE CONTRACTOR SHALL NOT OPERATE ANY WATER MAIN VALVES ON THE EXISTING SYSTEM.
- WATER MAINS AND WATER HOUSE CONNECTION LINES MUST BE PLACED SO AS TO HAVE AT LEAST ONE (1) FOOT SEPARATION FROM THE SEWER MAIN OR SEWER HOUSE CONNECTION AS THEY PASS ABOUT IT.
- MANHOLES LOCATED WITHIN PROPOSED ROADWAY SHALL HAVE STANDARD HEAVY TRAFFIC MANHOLE FRAME AND COVER, STANDARD DETAIL G 5.51
- MANHOLES DESIGNATED W.T. IN PLAN AND PROFILE SHALL HAVE WATERTIGHT FRAME AND COVER. STANDARD DETAIL G 5.52 WHERE WATERTIGHT MANHOLE FRAME AND COVER IS USED, SET TOP OF FRAME 1'-6" ABOVE FINISHED GRADE UNLESS OTHERWISE NOTED ON THE DRAWINGS.
- FOR DETAILS NOT SHOWN ON THE DRAWINGS, AND FOR MATERIALS AND CONSTRUCTION METHODS, USE HOWARD COUNTY DESIGN MANUAL, VOLUME II, STANDARD SPECIFICATIONS AND DETAILS FOR CONSTRUCTION. THE CONTRACTOR SHALL HAVE A COPY OF VOLUME II ON THE JOB.
- WHERE TEST PITS HAVE BEEN MADE ON EXISTING UTILITIES, THEY ARE NOTED BY THE SYMBOL AT THE LOCATION OF THE TEST PIT. A NOTE OR NOTES CONTAINING THE RESULTS OF THE TEST PIT OR PITS IS INCLUDED ON THE DRAWINGS. EXISTING UTILITIES IN THE VICINITY OF THE PROPOSED WORK FOR WHICH TEST PITS HAVE NOT BEEN DUG SHALL BE LOCATED BY THE CONTRACTOR TWO WEEKS IN ADVANCE OF CONSTRUCTION OPERATIONS AT HIS OWN EXPENSE.
- ALL FITTINGS SHALL BE BUTTRESSED OR ANCHORED WITH CONCRETE IN ACCORDANCE WITH THE STANDARD DETAILS UNLESS PROVIDED FOR ON THE DRAWINGS.

PLAN REFERENCE NUMBER
SDP - 87-200

THIS DEVELOPMENT PLAN IS APPROVED FOR EROSION AND SEDIMENT CONTROL BY HOWARD SOIL CONSERVATION DISTRICT.
APPROVED: 2/10/88
HOWARD SOIL CONSERVATION DISTRICT DATE

SEDIMENT CONTROL MEASURES FOR THIS CONTRACT WILL BE IMPLEMENTED IN ACCORDANCE WITH SECTION 219 OF THE HOWARD COUNTY DESIGN MANUAL AND STANDARDS AND SPECIFICATIONS FOR SOIL EROSION AND SEDIMENT CONTROL IN DEVELOPING AREAS AND ALSO AS SHOWN ON SDP 87-200
REVIEWED FOR HOWARD COUNTY SOIL CONSERVATION DISTRICT AND METS TECHNICAL REQUIREMENTS.
 2-10-87
U.S. SOIL CONSERVATION SERVICE DATE

CONTRACT NO. 34-1649-D
COVENANT BAPTIST CHURCH
LOT 1, CEDAR WOODS, PLAT #7027
WATER & SEWER EXTENSIONS
HOWARD COUNTY, MARYLAND

DEPARTMENT OF PUBLIC WORKS
HOWARD COUNTY, MARYLAND

2/10/88
DIRECTOR OF PUBLIC WORKS DATE

2-8-88
CHIEF, BUREAU OF UTILITIES DATE

FISHER, COLLINS AND CARTER, INC. #9757
CONSULTING ENGINEERS AND LAND SURVEYORS

8388 COURT AVENUE
ELLCOTT CITY, MARYLAND 21043

2-17-88
CHIEF, BUREAU OF ENGINEERING DATE

2-19-88
CHIEF, LAND DEVELOPMENT DIVISION DATE

DES: P.W.K.

DRN: J.O.

CHK: T.A.F.

DATE: 4/10/87

BY: NO.

REVISION: Revise WM Stationing & Ground-Over in Profile 2/17; Revise WM Alignment; 0+00 to 0+77 BK 2/17/88

PLAN AND PROFILE ✓
WATER AND SEWER MAINS

600' SCALE MAP NO. 35 BLOCK NO.

COVENANT BAPTIST CHURCH
LOT 1, CEDAR WOODS, PLAT #7027
CONTRACT NO. 34-1649-D
FIFTH ELECTION DISTRICT
HOWARD COUNTY, MARYLAND

SCALE AS SHOWN

SHEET 1 OF 1