

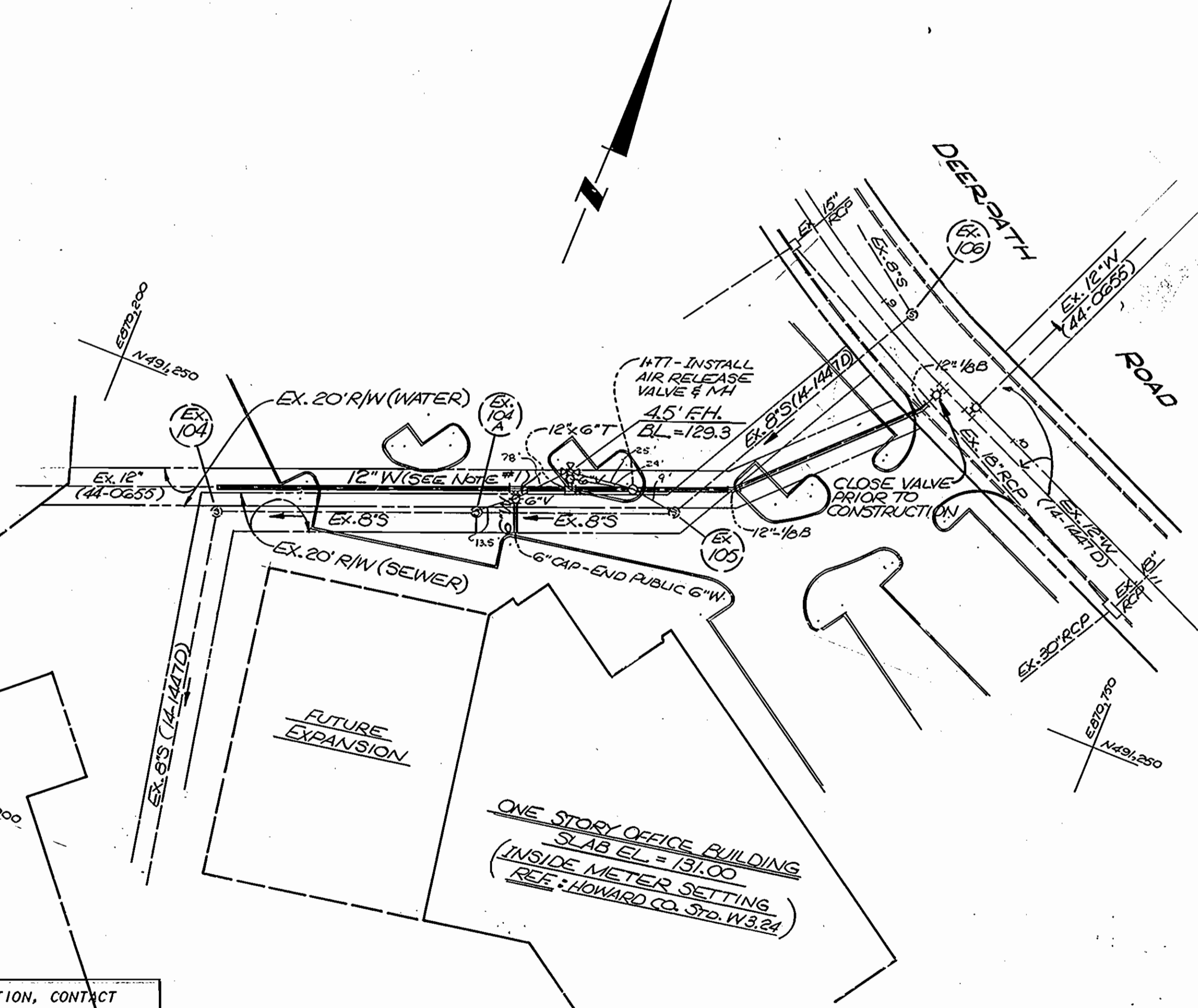
VICINITY MAP
SCALE 1" = 600'

GENERAL NOTES

- APPROXIMATE LOCATION OF EXISTING MAINS ARE SHOWN. THE CONTRACTOR SHALL TAKE ALL NECESSARY PRECAUTIONS TO PROTECT EXISTING MAINS AND SERVICES AND MAINTAIN UNINTERRUPTED SUPPLY. ANY DAMAGE INCURRED SHALL BE REPAIRED IMMEDIATELY TO THE SATISFACTION OF THE ENGINEER, AT THE CONTRACTOR'S EXPENSE.
- ALL HORIZONTAL CONTROLS ARE BASED ON MARYLAND STATE COORDINATES.
- ALL VERTICAL CONTROLS ARE BASED ON U.S.G.S. DATUM.
- ALL PIPE ELEVATIONS SHOWN ARE INVERT ELEVATIONS.
- CLEAR ALL UTILITIES BY A MINIMUM OF 6'. CLEAR ALL POLES BY 2'-0" MINIMUM OR TUNNEL AS REQUIRED.
- FOR DETAILS NOT SHOWN ON THE DRAWINGS, AND FOR MATERIALS AND CONSTRUCTION METHODS, USE HOWARD COUNTY DESIGN MANUAL, VOLUME IV, STANDARD SPECIFICATIONS AND DETAILS FOR CONSTRUCTION. THE CONTRACTOR SHALL HAVE A COPY OF VOLUME IV ON THE JOB.
- WHERE TEST PITS HAVE BEEN MADE ON EXISTING UTILITIES, THEY ARE NOTED BY THE SYMBOL AT THE LOCATION OF THE TEST PIT. A NOTE OR NOTES CONTAINING THE RESULTS OF THE TEST PIT OR PITS IS INCLUDED ON THE DRAWINGS. EXISTING UTILITIES IN THE VICINITY OF THE PROPOSED WORK FOR WHICH TEST PITS HAVE NOT BEEN DUG SHALL BE LOCATED BY THE CONTRACTOR TWO WEEKS IN ADVANCE OF CONSTRUCTION OPERATIONS AT HIS OWN EXPENSE. CONTRACTOR SHALL NOTIFY THE FOLLOWING UTILITIES OR AGENCIES AT LEAST FIVE WORKING DAYS BEFORE STARTING WORK SHOWN ON THESE PLANS.
 - STATE HIGHWAY ADMINISTRATION 531-5533
 - BALTIMORE GAS & ELECTRIC CO. CONTRACTOR SERVICE 561-2585
 - BALTIMORE GAS & ELECTRIC CO. UNDERGROUND DAMAGE CONTROL 234-5621
 - BALTIMORE GAS & ELECTRIC CO. TROUBLE SHOOTING 298-9013
 - MISS. UTILITY 1-800-257-7777
 - COLONIAL PIPELINE CO. 795-1390
 - BUREAU OF UTILITIES, HOWARD COUNTY DEPARTMENT OF PUBLIC WORKS 992-2366
- TREES AND SHRUBS ARE TO BE PROTECTED FROM DAMAGE TO MAXIMUM EXTENT. TREES AND SHRUBS LOCATED WITHIN THE CONSTRUCTION STRIP ARE NOT TO BE REMOVED OR DAMAGED BY THE CONTRACTOR.
- CONTRACTOR SHALL REMOVE TREES, STUMPS AND ROOTS ALONG LINE OF EXCAVATION.
- ALL WATER MAINS TO BE D.I.P UNLESS OTHERWISE NOTED.
- TOPS OF ALL WATER MAINS TO HAVE A MINIMUM OF 3'-1/2" COVER UNLESS OTHERWISE NOTED.
- VALVES ADJACENT TO TEES SHALL BE STRAPPED TO TEES.
- ALL FITTINGS SHALL BE BUTTRESSED OR ANCHORED WITH CONCRETE IN ACCORDANCE WITH THE STANDARD DETAILS UNLESS OTHERWISE PROVIDED FOR ON THE DRAWINGS.
- FIRE HYDRANTS SHALL BE SET TO THE BURY LINE ELEVATIONS SHOWN ON THE DRAWINGS. ALL FIRE HYDRANTS SHALL BE STRAPPED AND BUTTRESSED WITH CONCRETE IN ACCORDANCE WITH SECTION 1003 OF THE STANDARD SPECIFICATIONS.
- SOIL AROUND THE FIRE HYDRANT SHALL BE COMPACTED IN ACCORDANCE WITH SECTION 1003 OF THE STANDARD SPECIFICATIONS.
- THE CONTRACTOR SHALL NOT OPERATE ANY WATER MAIN VALVES ON THE EXISTING WATER SYSTEM.
- ALL WATER HOUSE CONNECTIONS SHALL BE FOR AN INSIDE METER SETTING, UNLESS OTHERWISE NOTED.
- EXTEND PIPE AS NECESSARY TO INSTALL PLUG FOR BLOCKING, WHERE WATER MAINS END WITH VALVES.
- ORIGINAL GROUND, OVER WATER AND SEWER WAS TAKEN FROM AERIAL PHOTOGRAPHY PREPARED BY GREENHORNE & O'MARA, INC. AND VERIFIED BY FIELD SURVEY IN DECEMBER 1986.
- STRAW BALE DIKES AND SILT FENCES ARE INTERCHANGEABLE.
- SEDIMENT CONTROL TO BE BUILT IN ACCORDANCE WITH S-86-80, ARTICLE 15 AND DETAILS SHOWN ON THIS PLAN.
- ALL SERVICE CLAMPS ARE TO HAVE STAINLESS STEEL STRAPS.

NOTES:

- REMOVE 12"W FROM THE JOINT NEAREST W/L STA. 0+15 TO THE JOINT NEAREST W/L STA. 3+92. RELOCATED WATER LINE IS TO MAINTAIN THE SAME HORIZONTAL ALIGNMENT AS EX. 12"W. TOTAL LENGTH OF 12" PIPE REQUIRED WILL VARY.
- EX. AIR RELEASE VALVE & MANHOLE ARE TO BE REMOVED & RELOCATED TO W/L STA. 1+77.
- CLOSE VALVE ON EX. 12"W AT DEERPETH ROAD AND AT VALVE ON 12"W ALONG DORSEY ROAD NEAR BG. & E. POLE NO. 188179, EAST OF DOUGLAS LEGUM DRIVE. (SHOWN ON CONTRACT NO. 44-0655)



PLAN SCALE: 1" = 50'

ITEM	QUANTITIES		MATERIAL / SUPPLIER
	BID	AS-BUILT	
12" WATER	LF 377	337	AS-BUILT
6" WATER	LF 23	21	"
12" 6" T	EA 2	2	"
6" VALVE	EA 2	2	U.S. PIPE & FOUNDRY
12" 1/8 H.B.	EA 1	1	U.S. PIPE & FOUNDRY
6" CAP	EA 1	1	U.S. PIPE & FOUNDRY
12" 1/16 H.B.			"
6" 1/16 H.B.			"
4.5" FIRE HYDRANT	EA 1	1	U.S. PIPE & FOUNDRY

REVIEWED FOR HOWARD S.C.D. AND MEETS TECHNICAL REQUIREMENTS.

J. Halpin 4/27/87 DATE

ULS SOIL CONSERVATION SERVICE

THIS DEVELOPMENT PLAN IS APPROVED FOR SOIL EROSION AND SEDIMENT CONTROL BY THE HOWARD SOIL CONSERVATION DISTRICT

Stephen L. Miller 4/27/87 DATE

HOWARD S.C.D.

DRAINAGE AREA: PATAPSCO
TYPE OF BUILDINGS: OFFICE BUILDINGS

NO. OF WHC: 1
NO. OF LOTS: 1

WATER & SEWER CODE FOR COUNTY USE
WATER: BOI
SEWER: N/A

SEDIMENT CONTROL MEASURES FOR THIS CONTRACT WILL BE IMPLEMENTED IN ACCORDANCE WITH ARTICLE 15 OF THE STANDARD SPECIFICATION, AND SITE PLANS SDP-87-161

BEFORE BEGINNING CONSTRUCTION, CONTACT "MISS UTILITY" AT 1-800-257-7777 AT LEAST 48 HOURS PRIOR TO CONSTRUCTION

DEPARTMENT OF PUBLIC WORKS
HOWARD COUNTY, MARYLAND

Joseph F. Naimy 4-28-87 DATE
DIRECTOR OF PUBLIC WORKS

Robert M. Belimer 4-21-87 DATE
CHIEF, BUREAU OF UTILITIES

Robert M. Belimer 4-21-87 DATE
CHIEF, CIVIL DEVELOPMENT DIVISION

GREENHORNE & O'MARA, INC.

2 RESEARCH PLACE
ROCKVILLE, MARYLAND
20850-3291
(301) 948-0900

Robert M. Belimer 2-20-87

DES: JDP
DRN: JDP
CHK: RHM
DATE: 1/87

BY NO. REVISION DATE

PLAN FOR WATER MAIN (LOWERING)

600' SCALE MAP NO. 37.42 BLOCK NO. 23.24.12

AS-BUILT G. WALLACE 9-9-87

DORSEY BUSINESS CENTER
PARCEL "K"
1ST ELECTION DISTRICT
HOWARD COUNTY, MARYLAND
CONTRACT NO. 44-1646-D

SCALE AS SHOWN
SHEET 1 OF 1

R-1594-X