

- GENERAL NOTES**
- APPROXIMATE LOCATION OF EXISTING MAINS ARE SHOWN. THE CONTRACTOR SHALL TAKE ALL NECESSARY PRECAUTIONS TO PROTECT EXISTING MAINS AND SERVICES AND MAINTAIN UNINTERRUPTED SUPPLY. ANY DAMAGE INCURRED SHALL BE REPAIRED IMMEDIATELY TO THE SATISFACTION OF THE ENGINEER AT THE CONTRACTOR'S EXPENSE.
 - ALL HORIZONTAL CONTROLS ARE BASED ON MARYLAND STATE COORDINATES.
 - ALL VERTICAL CONTROLS ARE BASED ON U.S.G.C. DATA.
 - ALL PIPE ELEVATIONS SHOWN ARE INVERT ELEVATIONS.
 - CLEAR ALL UTILITIES BY A MINIMUM OF 6". CLEAR ALL POLES BY 2'-0" MINIMUM OR TUNNEL AS REQUIRED. THE OWNER HAS CONTACTED THE UTILITY COMPANIES AND HAS MADE ARRANGEMENTS FOR BRACING OF POLES AS SHOWN ON THE DRAWINGS. IN THE EVENT THE CONTRACTOR'S WORK REQUIRES THE BRACING OF ADDITIONAL POLES, ANY COST INCURRED BY THE OWNER FOR THE BRACING OF ADDITIONAL POLES OR DAMAGES SHALL BE DEDUCTED FROM MONEY OWED THE CONTRACTOR. THE CONTRACTOR SHALL COORDINATE WITH THE UTILITY COMPANIES TO SCHEDULE THE BRACING OF THE POLES.
 - FOR DETAILS NOT SHOWN ON THE DRAWINGS, AND FOR MATERIALS AND CONSTRUCTION METHODS, USE HOWARD COUNTY DESIGN MANUAL, VOLUME IV, STANDARD SPECIFICATIONS AND DETAILS FOR CONSTRUCTION. THE CONTRACTOR SHALL HAVE A COPY OF VOLUME IV ON THE JOB.
 - WHERE TEST PITS HAVE BEEN MADE ON EXISTING UTILITIES, THEY ARE NOTED BY THE SYMBOL AT THE LOCATION OF THE TEST PIT. A NOTE OR NOTES CONTAINING THE RESULTS OF THE TEST PIT OR PITS IS INCLUDED ON THE DRAWINGS. EXISTING UTILITIES IN THE VICINITY OF THE PROPOSED WORK FOR WHICH TEST PITS HAVE NOT BEEN DUG SHALL BE LOCATED BY THE CONTRACTOR TWO WEEKS IN ADVANCE OF CONSTRUCTION OPERATIONS AT HIS OWN EXPENSE.
 - CONTRACTOR SHALL NOTIFY THE FOLLOWING UTILITIES OR AGENCIES AT LEAST FIVE WORKING DAYS BEFORE STARTING WORK SHOWN ON THESE PLANS:
 - C&P - 1-800-257-7777
 - STATE HIGHWAY ADMINISTRATION - 531-5533
 - BALTIMORE GAS & ELECTRIC CO. CONTRACTOR SERVICES - 850-4670
 - BALTIMORE GAS & ELECTRIC CO. UNDER GROUND DAMAGE CONTROL - 859-9004
 - BALTIMORE GAS & ELECTRIC CO. TROUBLE SHOOTING - 298-9001
 - MISS UTILITY - 1-559-0101
 - COLONIAL PIPELINE CO. - 795-1390
 - BUREAU OF UTILITIES, HOWARD COUNTY DEPARTMENT OF PUBLIC WORKS - 992-2366
 - TREES ARE TO BE PROTECTED FROM DAMAGE TO MAXIMUM EXTENT. TREES LOCATED WITHIN THE CONSTRUCTION STRIP ARE NOT TO BE REMOVED OR DAMAGED BY THE CONTRACTOR.
 - CONTRACTOR SHALL REMOVE TREES, STUMPS AND ROOTS ALONG LINE OF EXCAVATION AS DIRECTED BY THE ENGINEER. PAYMENT FOR SUCH REMOVAL SHALL BE INCLUDED IN THE UNIT PRICE BID FOR EXCAVATION AND BACKFILL.
 - PLACE REGULATION "MEN WORKING" AND WARNING SIGNS AS REQUIRED TO COMPLY WITH MARYLAND STATE HIGHWAY ADMINISTRATION MANUAL OF TRAFFIC CONTROL FOR HIGHWAY CONSTRUCTION AND MAINTENANCE OPERATIONS.
 - ALL WATER MAINS TO BE D.I.P. UNLESS OTHERWISE NOTED.
 - TOP OF ALL WATER MAINS TO HAVE A MINIMUM OF 3" COVER UNLESS OTHERWISE NOTED.
 - VALVES ADJACENT TO TEES SHALL BE STRAPPED TO TEES.
 - BLOCK ALL FITTINGS WITH CONCRETE.
 - BURY LINE ELEVATIONS ON FIRE HYDRANTS SHALL BE SET TO THE ELEVATIONS SHOWN ON THE DRAWINGS. ALL FIRE HYDRANTS SHALL BE STRAPPED AND BUTTRESSED IN ACCORDANCE WITH STANDARD DETAILS. SOIL AROUND THE FIRE HYDRANT TO BE COMPACTED IN ACCORDANCE WITH SECTIONS 1003 AND 1008 OF THE GENERAL REQUIREMENTS FOR WATER AND SEWER.
 - ALL WATER HOUSE CONNECTIONS SHALL BE FOR AN INSIDE METER SETTING.
 - THE CONTRACTOR SHALL NOT OPERATE ANY WATER MAIN VALVES ON THE EXISTING SYSTEM.
 - FOR ALL COPPER WATER HOUSE CONNECTIONS UTILIZE FLARED TYPE FITTINGS ONLY.
 - THE SERVICE CLAMPS ARE TO HAVE STAINLESS STEEL STRAPS.
 - ALL SEWER MAINS SHALL BE C.S.P.X., V.C.P.X., P.V.C. OR A.C.P. CLASS 2400 UNLESS OTHERWISE NOTED.
 - THE CONTRACTOR SHALL PROVIDE A JOINT IN ALL SEWER MAINS WITHIN 2'-0" OF EXTERIOR MANHOLE WALL.
 - ALL MANHOLES SHALL BE 4'-0" INSIDE DIAMETER UNLESS OTHERWISE NOTED.
 - MANHOLES SHOWN WITH 12" AND 16" HALLS ARE BRICK MANHOLES ONLY.
 - MANHOLES DESIGNATED W.T. IN PLAN AND PROFILE SHALL HAVE WATERTIGHT FRAME AND COVERS, STANDARD DETAIL 65.52 VOLUME 11 WHERE WATERTIGHT MANHOLE FRAME AND COVER IS USED, SET TOP OF FRAME 1'-6" ABOVE FINISHED GRADE.
 - HOUSE(S) WITH THE SYMBOL "C.N.S." INDICATES THE CELLAR CANNOT BE SERVED.
 - ALL WATER HOUSE CONNECTIONS SHALL HAVE A MINIMUM VERTICAL CLEARANCE OF 12" ABOVE ALL SANITARY SEWER CROSSINGS.
 - ALL SANITARY SEWER HOUSE CONNECTIONS SHALL HAVE A MINIMUM VERTICAL CLEARANCE OF 12" BELOW ALL WATER MAIN CROSSINGS.
 - PROFILE STATIONS SHALL BE ADJUSTED AS NECESSARY TO CONFORM TO PLAN DIMENSIONS.
 - NO PIPE SHALL BE LAID UNTIL LINES OF EXCAVATION HAVE BEEN BROUGHT TO SUBGRADE.

QUANTITIES			
ITEM	ESTIMATED	AS BUILT	SUPPLIER
8" WATER	1478 LF	1478 LF	
6" WATER	322 LF	319 LF	
4" WATER	250	250	
PH'S	4 EA	2 EA	
Blowoff	2 EA	2 EA	
1/4" WHC	250 LF	250 LF	
1/2" WHC	615 LF	615 LF	
6" SEWER	2660 LF	2660 LF	
12" MANHOLES	15	15	
6" SHC	615 LF	615 LF	
6" V-EXCLUDING MAN	1 EA	1 EA	
3" SLP	52 LF	52 LF	

HOWARD SOIL CONSERVATION DISTRICT:
REVIEWED FOR HOWARD SOIL CONSERVATION DISTRICT
AND MEETS TECHNICAL REQUIREMENTS.

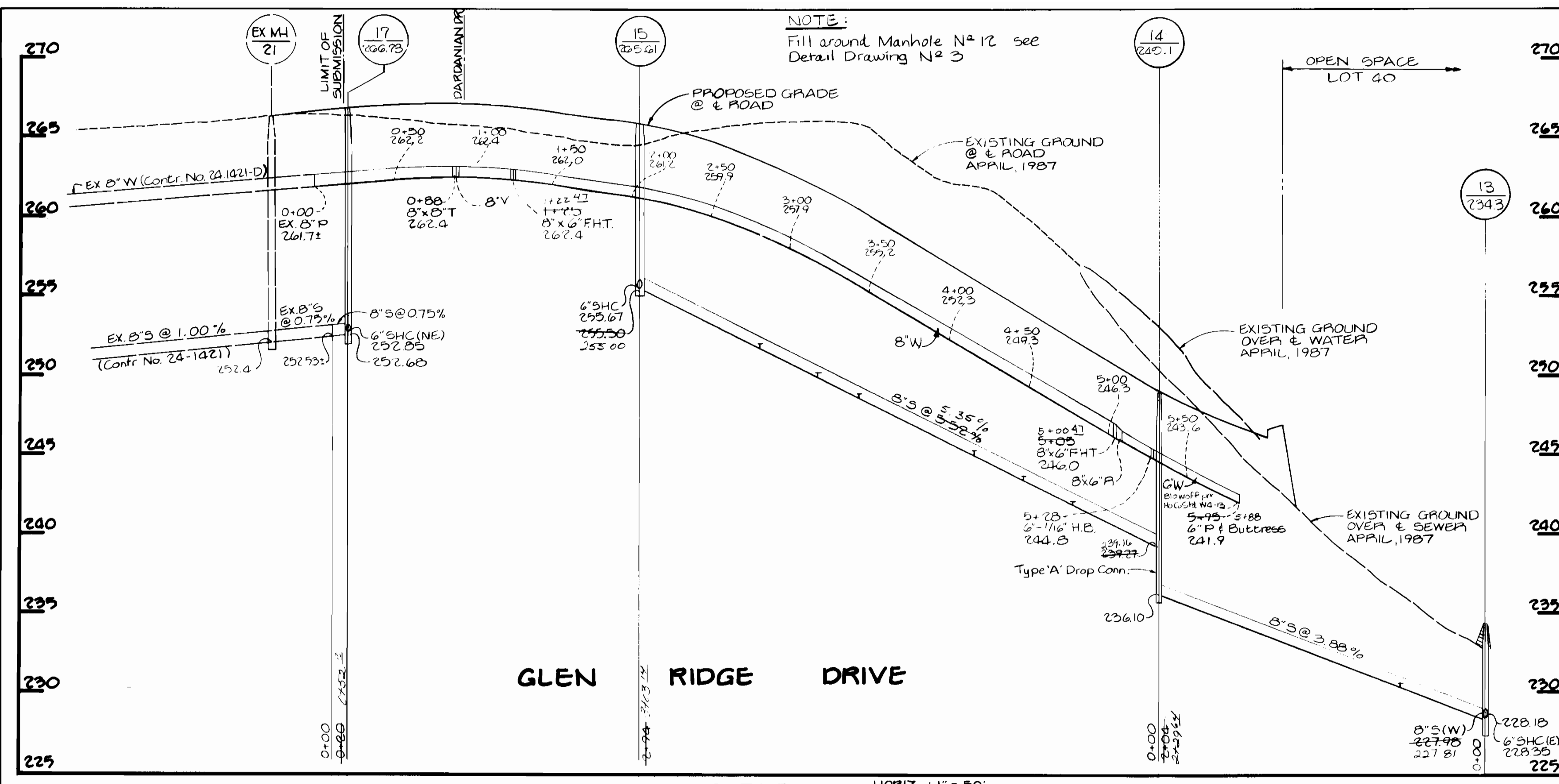
James McVela 12-30-87
S. SOIL CONSERVATION SERVICE DATE

THIS PLAN IS APPROVED FOR SOIL EROSION AND SEDIMENT
CONTROL BY THE HOWARD SOIL CONSERVATION DISTRICT.

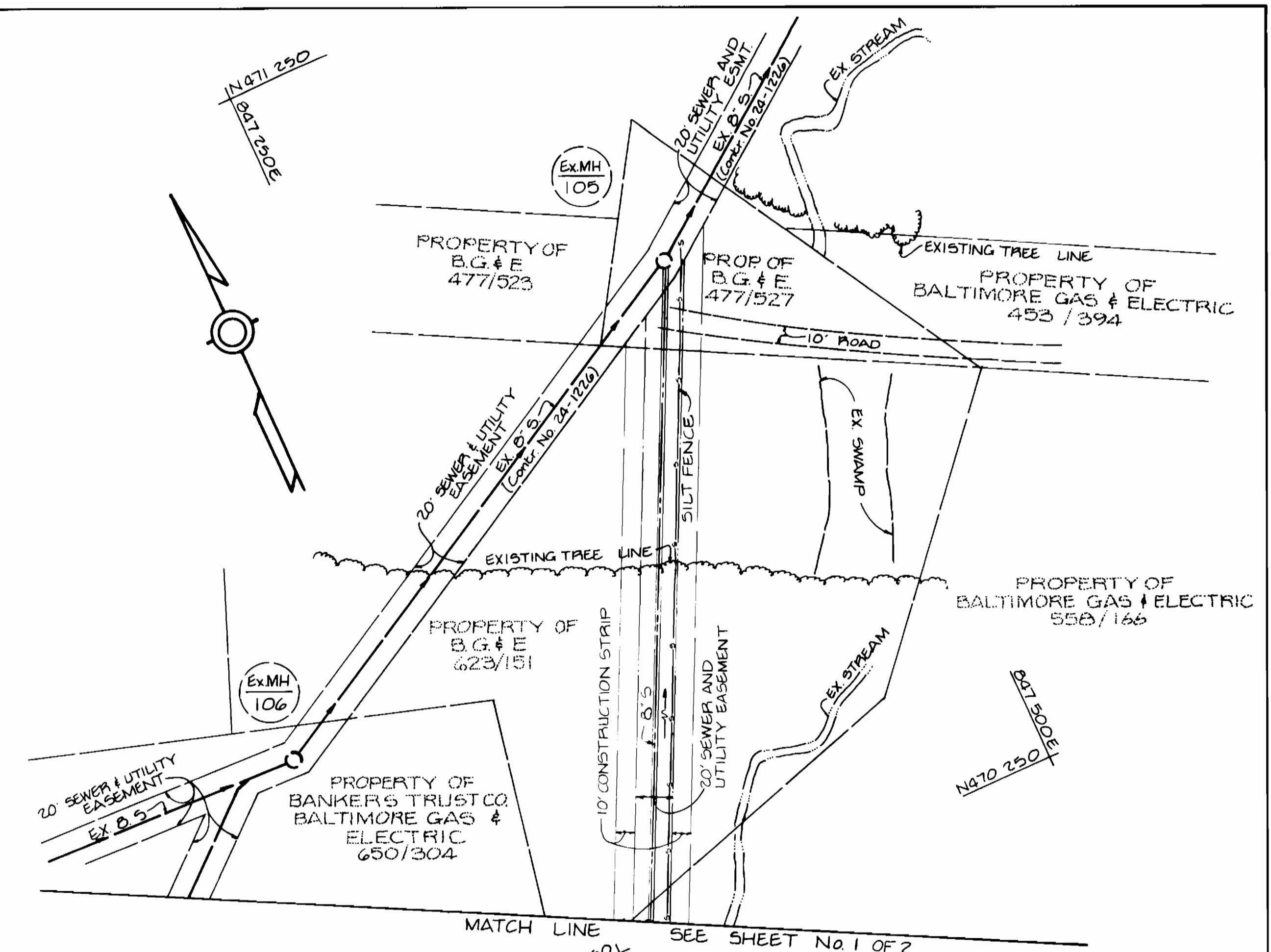
John K. Robertson 12/30/87
HOWARD SOIL CONSERVATION DISTRICT DATE

SEDIMENT CONTROL MEASURES FOR THIS CONTRACT WILL BE
IMPLEMENTED IN ACCORDANCE WITH SECTION 919 OF THE
HOWARD COUNTY STANDARD SPECIFICATIONS AND AS PER
ROAD CONSTRUCTION PLANS #F-87-207

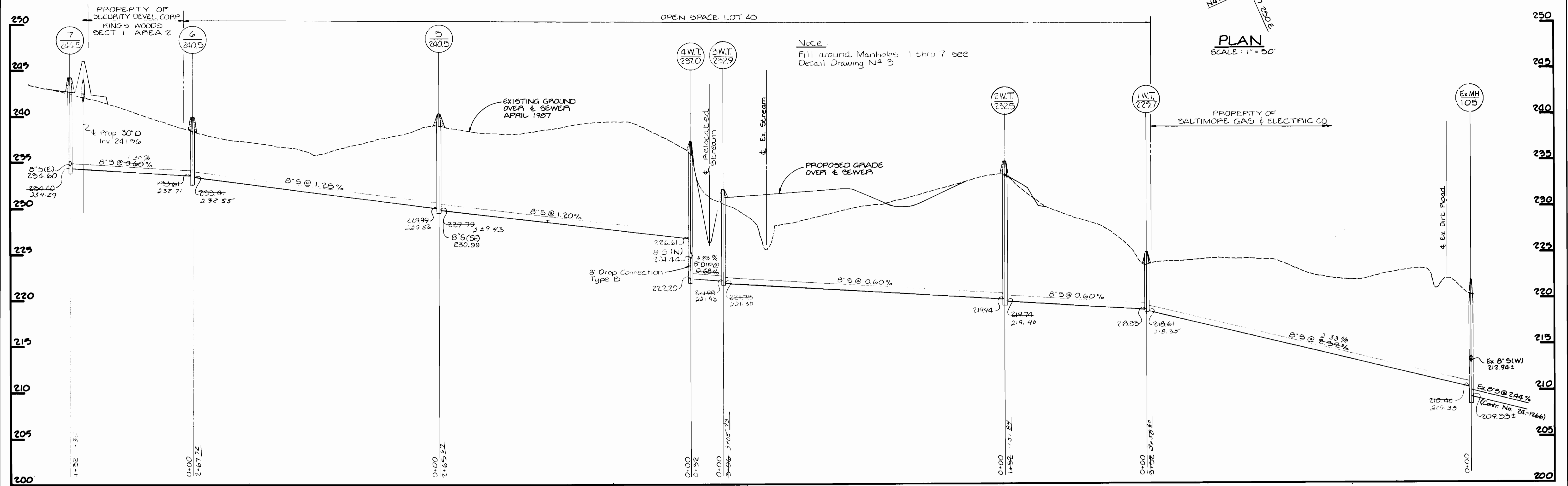
DEPARTMENT OF PUBLIC WORKS HOWARD COUNTY, MARYLAND <i>Robert M. Beinger</i> 1-12-88 CHIEF, BUREAU OF UTILITIES DATE	TRACY, SCHULTE & ASSOCIATES INC. planning architecture engineering 8480 Baltimore National Pike Suite 418 Ellicott City, Maryland 21043	STATE OF MARYLAND PROFESSIONAL ENGINEER TRACY, SCHULTE & ASSOCIATES INC. 1-12-88 DATE	15 D.A.M. JLN: JLN THK: JLN DATE: 5/20/87	REVISION 11/9/88 REVISED W+S LAYOUT ON KING'S GRANT ROAD 11/9/88 REVISED W+S LAYOUT ON MANORWOOD ROAD 2/18/88 REVISED FRONT FOOTAGE NUMBERS LOTS 22 & 24	PLAN OF WATER AND SEWER MAINS KING'S WOODS SECTION I, AREA I ELECTION DISTRICT NO. 6 CONTRACT NO. 24-1638-D	SCALE AS SHOWN SHEET 1 OF 3
--	---	---	--	---	--	---



PROFILE SCALE: HORIZ: 1" = 50'
VERT: 1" = 5'



PLAN SCALE: 1" = 50'



PROFILE SCALE: HORIZ: 1" = 50'
VERT: 1" = 5'

DEPARTMENT OF PUBLIC WORKS
HOWARD COUNTY, MARYLAND

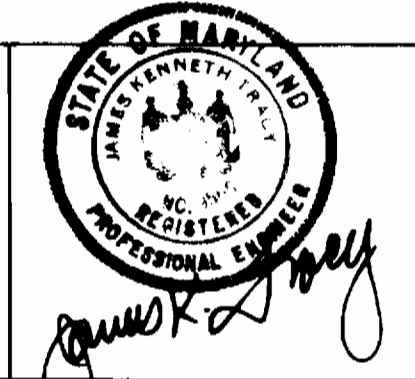
James M. Shinn 11/26/88
DIRECTOR OF PUBLIC WORKS DATE

Robert M. Beisinger 1-12-88
CHIEF, BUREAU OF UTILITIES DATE

William R. Ray 1-12-88
CHIEF, BUREAU OF ENGINEERING DATE

William H. [unclear] [unclear]
CHIEF, LAND DEVELOPMENT DIVISION DATE

TRACY, SCHULTE & ASSOCIATES INC.
planning architecture engineering
8480 Baltimore National Pike Suite 418
Ellicott City, Maryland 21043



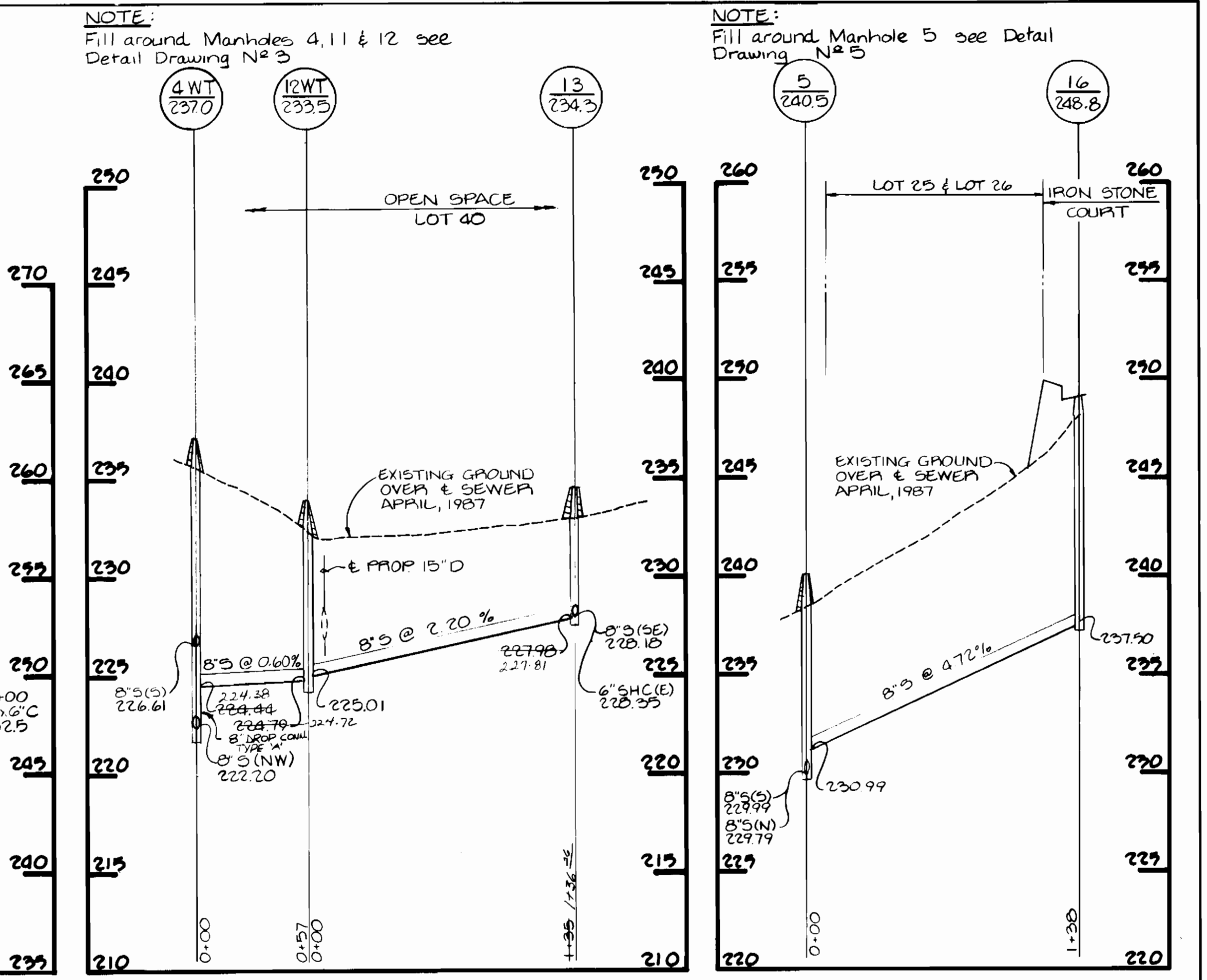
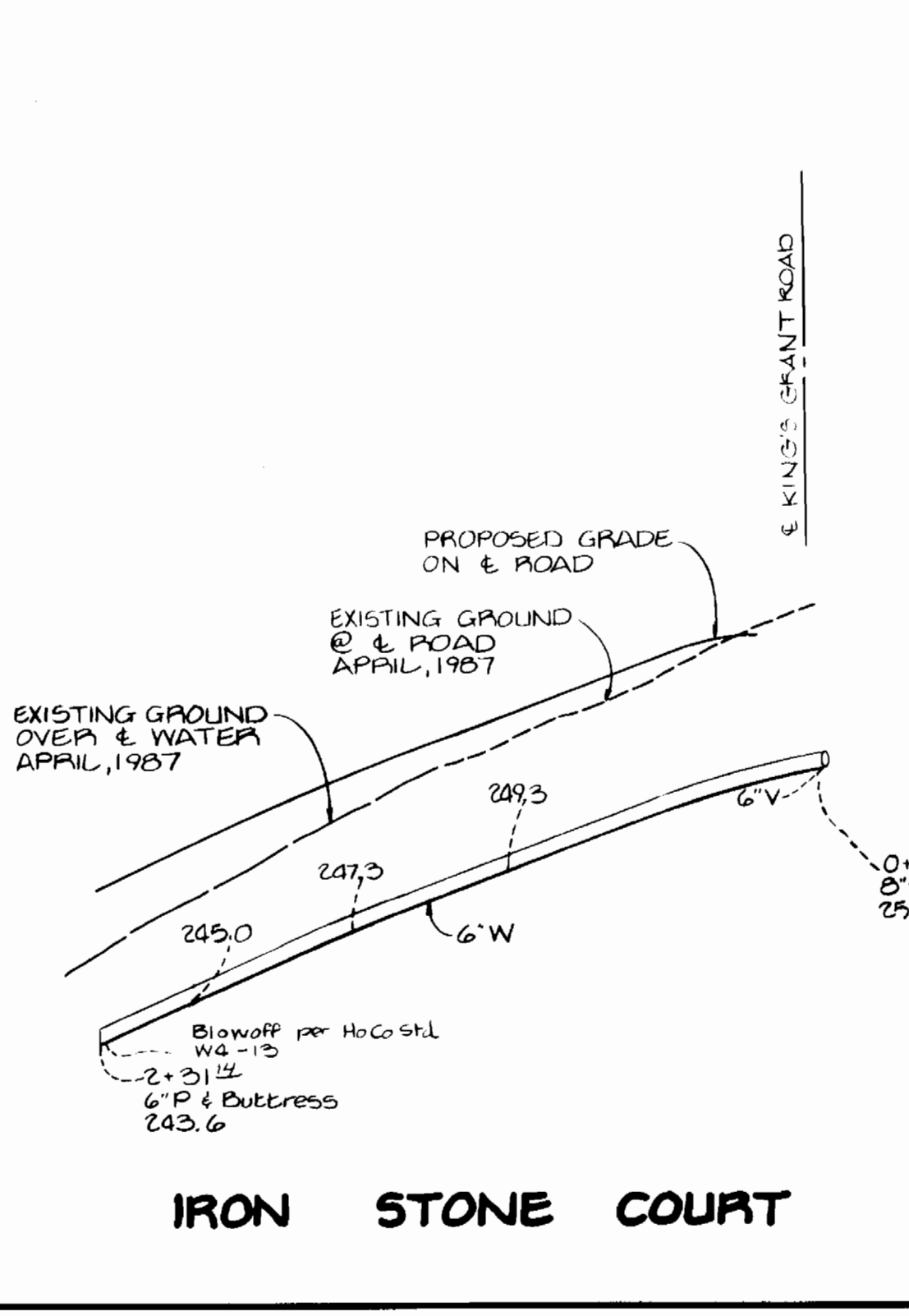
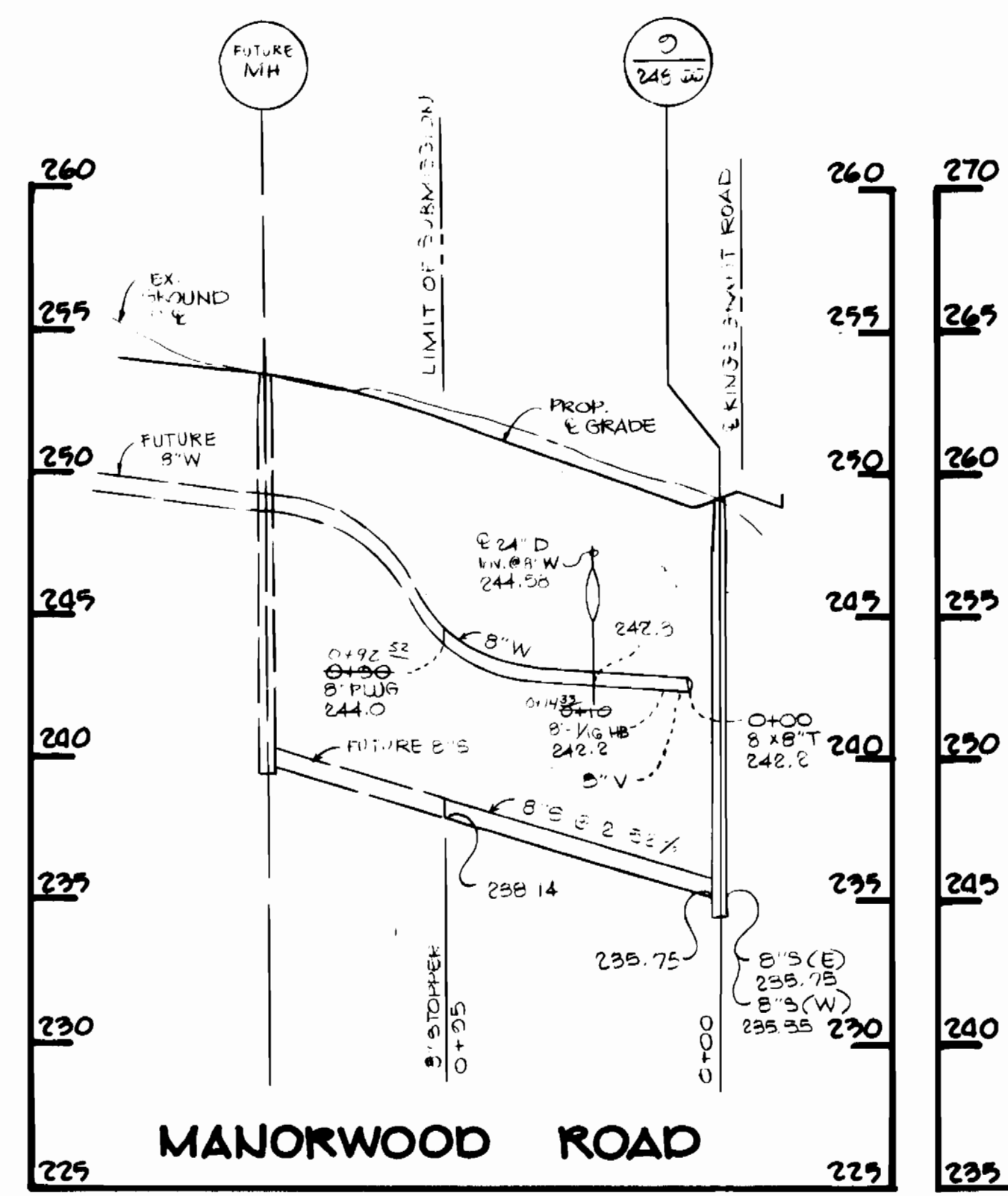
DES: D.A.M.	CDT	Added MH 21 Bubble	2-9-88
DRN: J.H.			
CHK:			
DATE: 5/20/87	BY NO.	1 PLVKE INVERT MH 5	3-1-88
		REVISION	

PLAN AND PROFILES OF
WATER AND SEWER MAINS

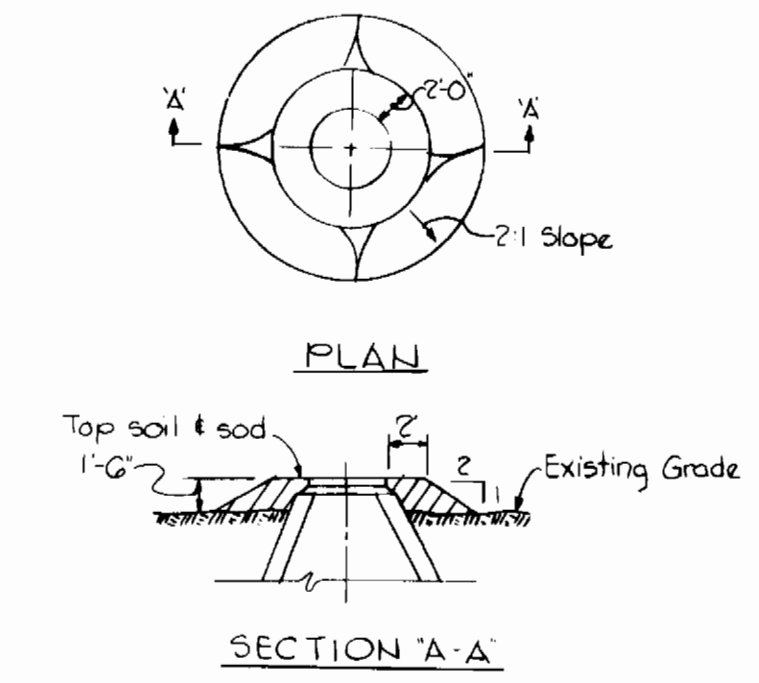
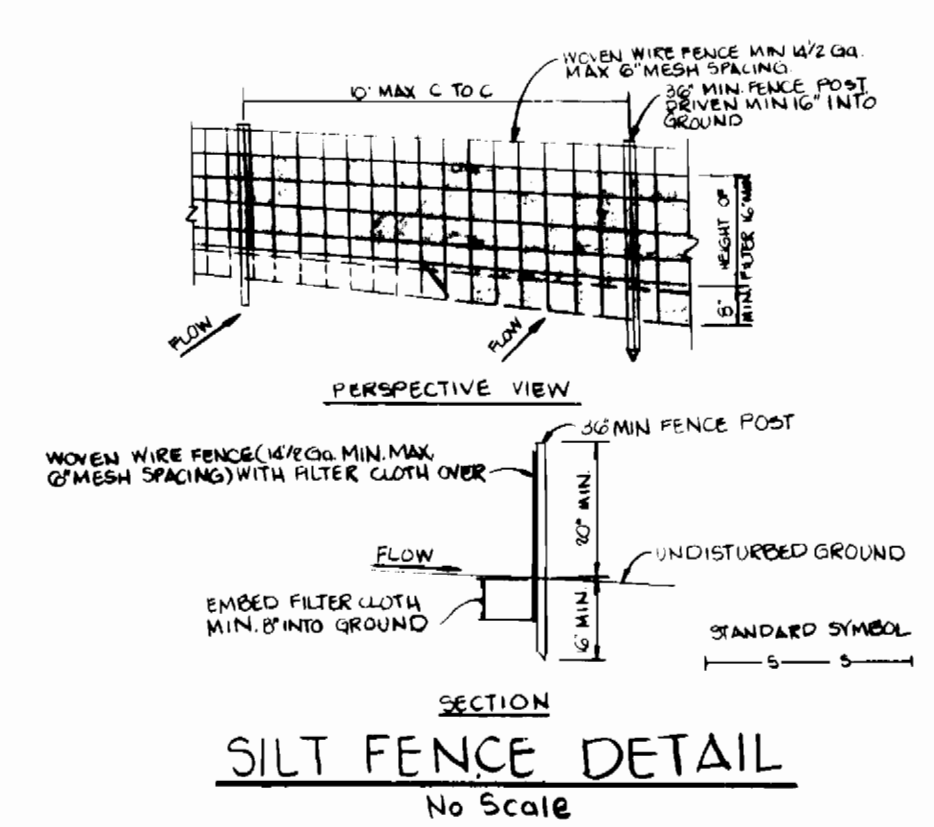
600'S SCALE MAP NO. 47 BLOCK NO. 22

KING S WOODS
SECTION I, AREA I
ELECTION DISTRICT NO. 6
CONTRACT NO. 24-1638-D

SCALE AS SHOWN
SHEET 2 OF 3

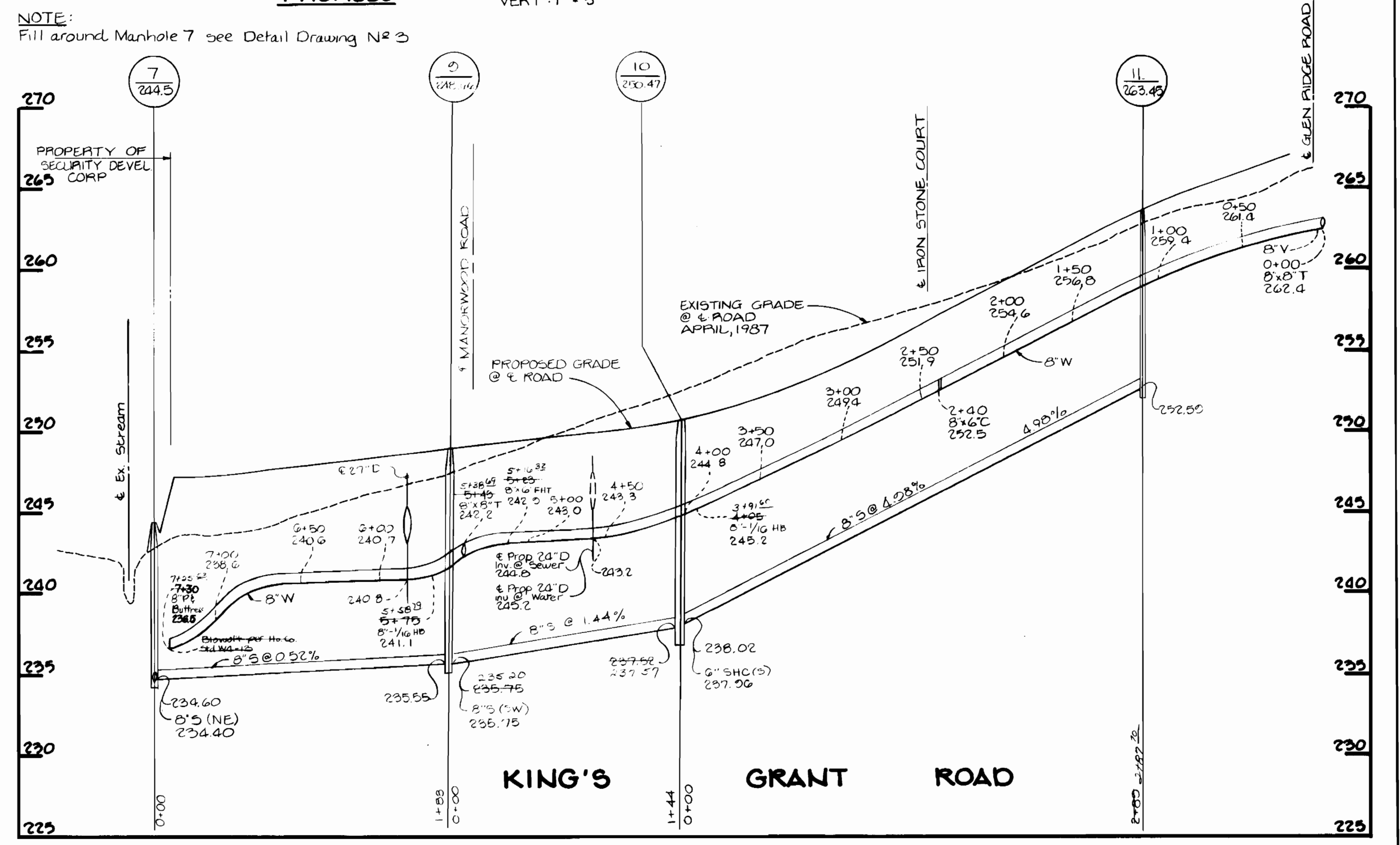


PROFILES SCALE: HORIZ: 1" = 50' VERT: 1" = 5'



- Notes:
- 1) All manhole frame and covers shall be flush with grade except when shown on Profile to be set higher than grade.
 - 2) Manhole frame and covers to be set higher than grade shall be set in accordance with this detail.
 - 3) Manhole frames and covers to be set higher than 1'-0" shall be set as noted on the Profile and in accordance with this Detail.

FILL AROUND MH's 1-7 & 11-12 No Scale



PROFILE SCALE: HORIZ: 1" = 50' VERT: 1" = 5'

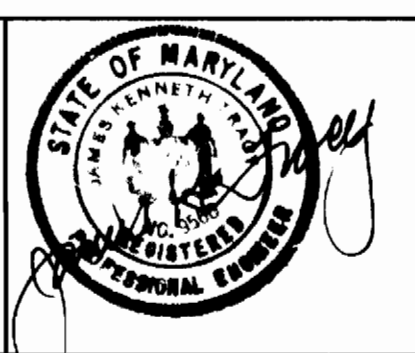
DEPARTMENT OF PUBLIC WORKS
HOWARD COUNTY, MARYLAND

James J. Levin 11/3/88
DIRECTOR OF PUBLIC WORKS DATE

Robert H. Beaman 1-12-88
CHIEF BUREAU OF UTILITIES DATE

TRACY, SCHULTE & ASSOCIATES INC.
planning architecture engineering

8480 Baltimore National Pike Suite 418
Ellicott City, Maryland 21043



DES: D.A.M.	1	REVISE PHT LOCATION DARDANIAN DRINK	5-1-88
DRN: J.H.			
CHK:			
DATE: 5/20/87	BY NO.	REVISION	DATE

PROFILES OF
WATER AND SEWER MAINS

600' SCALE MAP NO. 47 BLOCK NO. 22

KING'S WOODS
SECTION I, AREA I
ELECTION DISTRICT NO. 6
CONTRACT NO. 24-1638-D

SCALE AS SHOWN
SHEET 3 OF 3