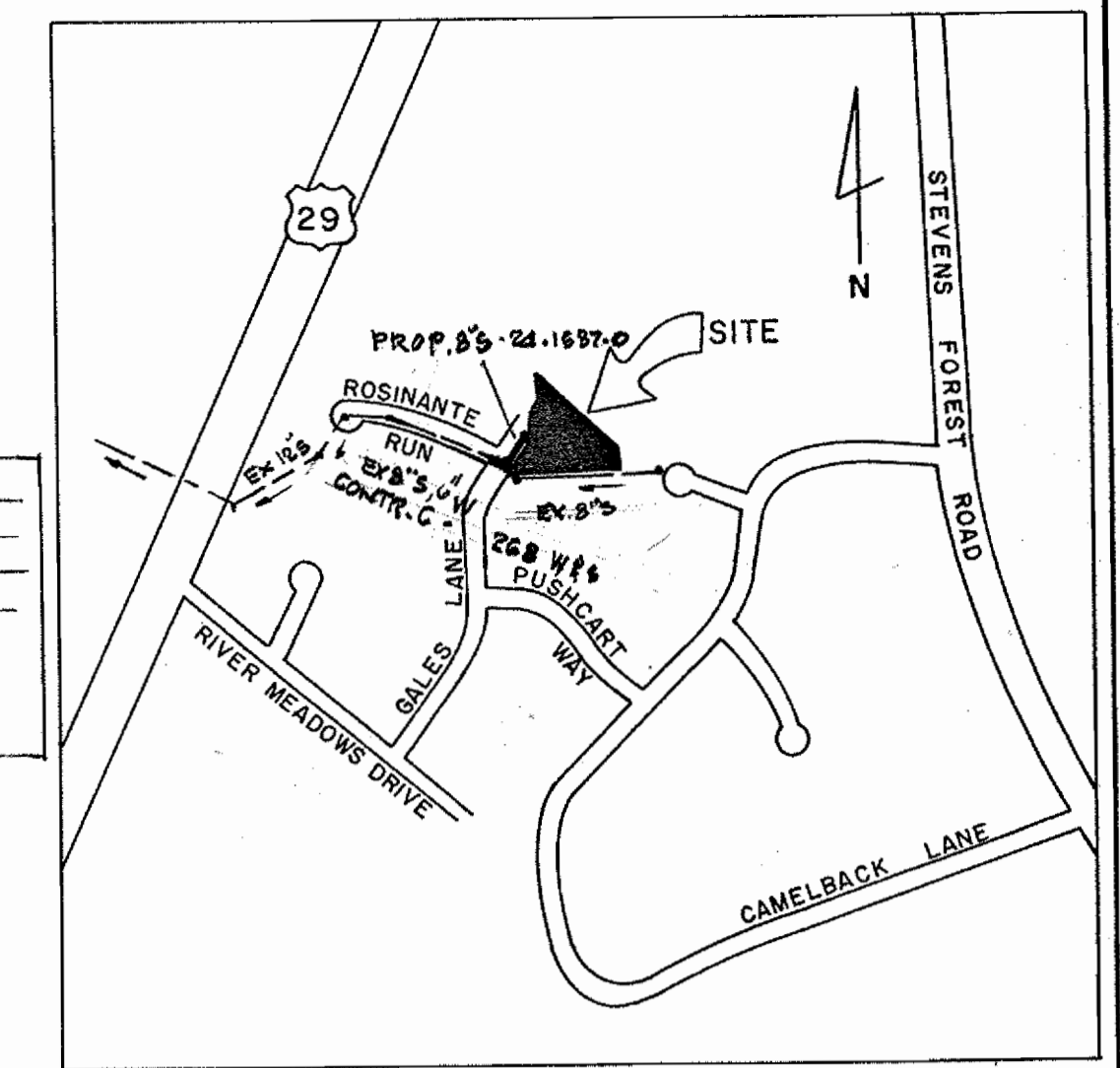


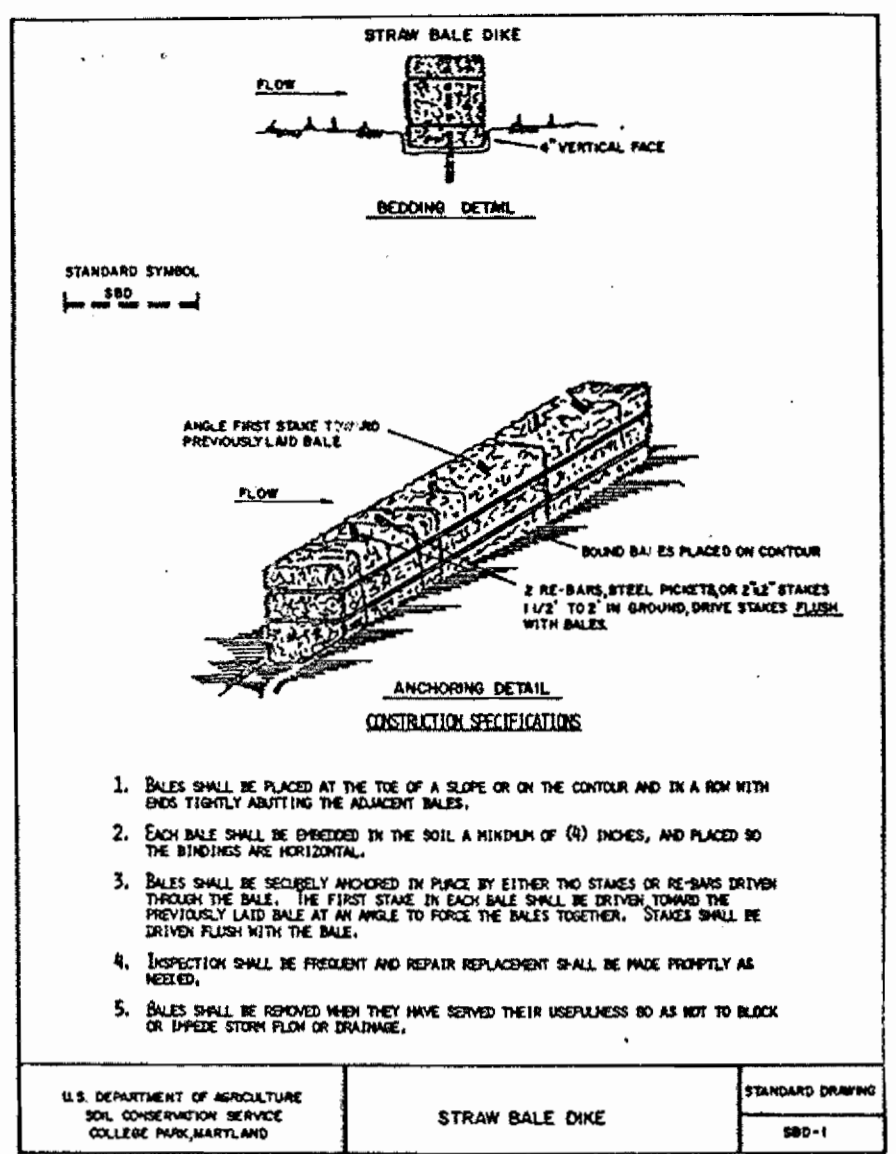
WATER & SEWER CODE
 COUNTY USE
 WATER E09
 SEWER 5331200



VICINITY MAP, 1 in. = 600 ft.

TYPE OF BUILDING	SINGLE FAMILY DETACHED
NO. OF UNITS	1
NO. OF SHC'S	4
NO. OF WHC'S	4
DRAINAGE AREA	LITTLE PATUXENT

BENCH MARK; WR&A 10M-2
 DESCRIPTION: R.R. SPIKE IN BASE OF
 20' POPLAR 2' 1/2" LEFT OF CENTER LINE STATION
 2+65 1/2 BETWEEN P.I. 10M-3 & P.I. 10M-4



- Bales shall be placed at the toe of a slope or on the contour and on a row with one third of the bales overlapping the adjacent bales.
- Each bale shall be oriented in the soil a minimum of (8) inches, and placed so the bales are horizontal.
- Bales shall be securely anchored in place by either two stages or by same system through the bales. The first stage in each row shall be driven through the previously laid bales at an angle to force the bales together. Stages shall be driven flush with the bales.
- Inspection shall be present and repair replacement shall be made properly as noted.
- Bales shall be removed when they have served their usefulness so as not to block or impede storm flow or drainage.

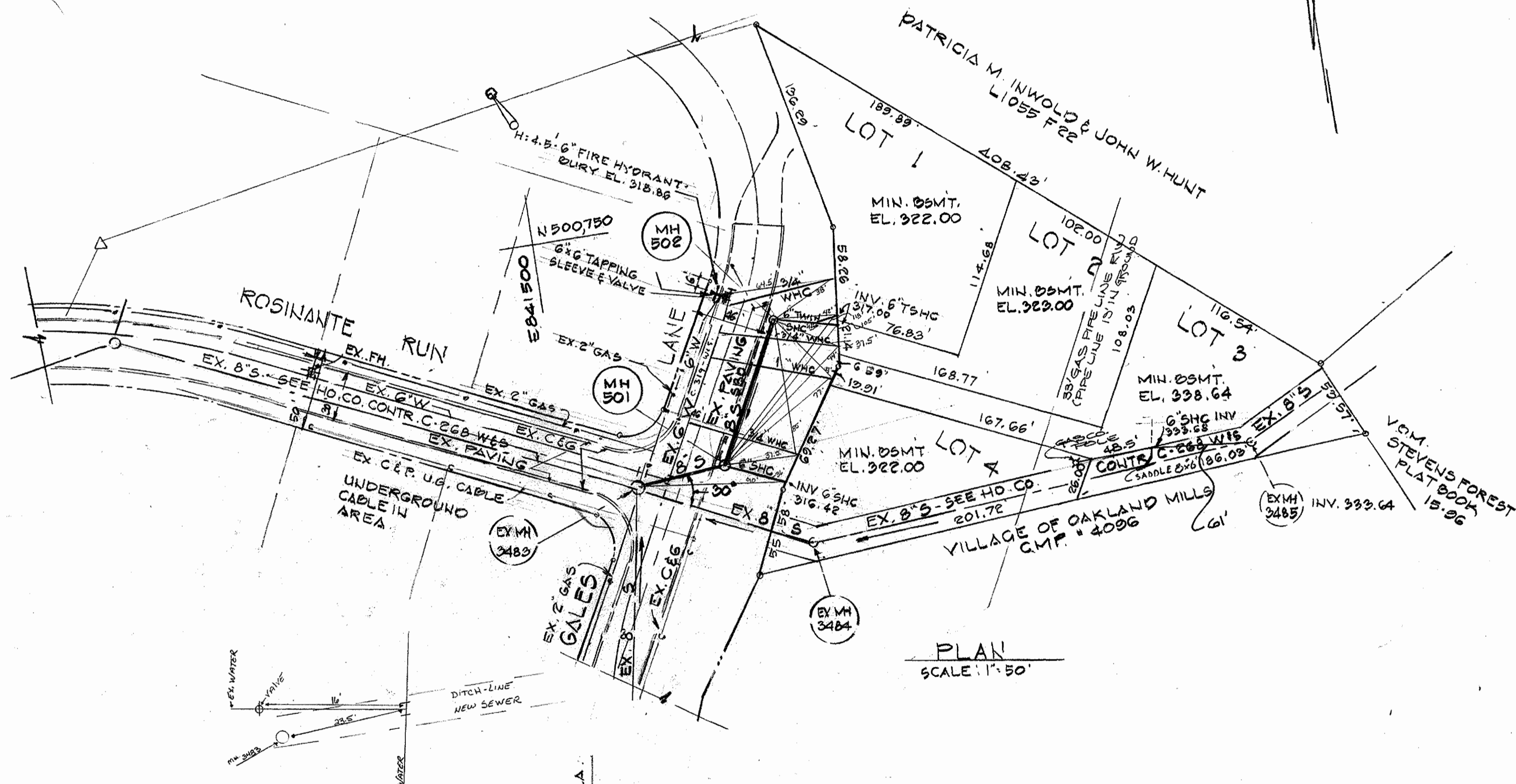
U.S. DEPARTMENT OF AGRICULTURE
 SOIL CONSERVATION SERVICE
 COLLEGE PARK, MARYLAND
 STANDARD DRAWING
 STRAW BALE DIKE
 890-1

- Construction Sequence
 Sediment Control Procedures
- Obtain sediment control permit (Article 15.05-3).
 - Construct continuous sediment barrier for all disturbed areas. Use straw bales. Note this area requires no clearing or grubbing.
 - After straw bales are in place, excavate for proposed water and sewer extensions.
 - All excavated material shall be stockpiled on high side of trench.
 - Construct pipe lines.
 - Restore erosion control measures disturbed by water and sewer construction.
 - Stabilize disturbed areas as construction progresses with temporary seeding and mulching (or permanent restoration).
 - Complete permanent restoration.
 - All sediment control devices shall remain in place until removal is approved by the S.C.S. inspector.
 - Permanent restoration in construction area of water and sewer mains shall follow within one week of pipe laying and backfilling.

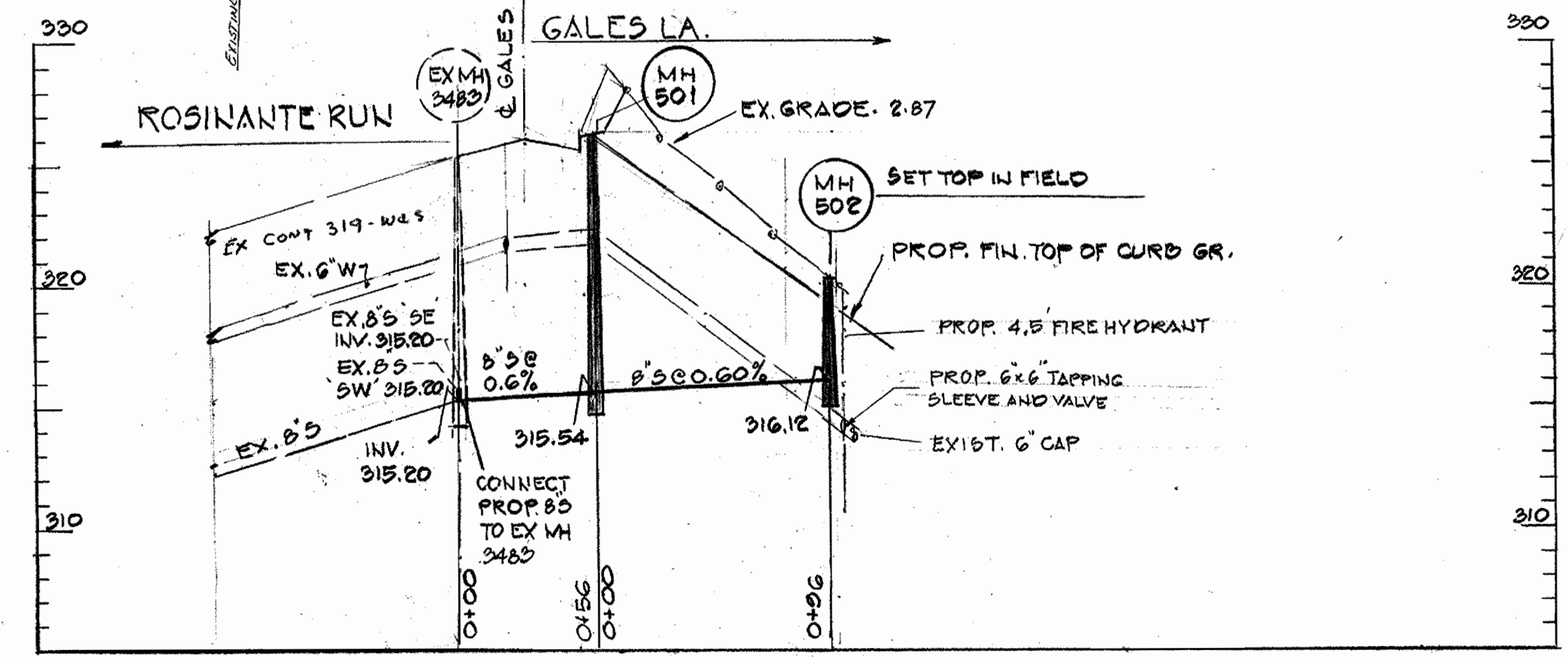
Sediment Control Measures will be implemented in accordance with Sec. 219 of the Specifications & with Road Construction Plan F-07-141; Drawings Sediment & Erosion Control.

REVIEWED FOR HOWARD SOIL CONSERVATION DISTRICT AND MEETS TECHNICAL REQUIREMENT.
Thomas W. Helm 10-27-87
 SIGNATURE DATE
 U.S. SOIL CONSERVATION SERVICE

This Development Plan is approved for Soil Erosion and Sediment Control by the Howard Soil Conservation District.
 APPROVED:
Stephen L. Fink 10/27/87
 Howard S.C.D. DATE



PLAN SCALE 1" = 50'



PROFILE SCALE VERT. 1" = 5.0'

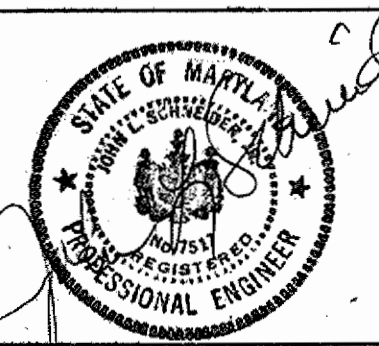
- GENERAL NOTES:
- Approximate location of existing mains are shown. The contractor shall take all necessary precautions to protect existing mains and services and maintain uninterrupted supply. Any damage incurred shall be repaired immediately.
 - All horizontal controls are based on Maryland State Coordinates.
 - All vertical controls are based on U.S.G.S. Datum.
 - All pipe elevations shown are invert elevations.
 - Clear all utilities by a minimum of 6". Clear all poles 2'-0" minimum or tunnel as required.
 - For all standard details see standards bound in specifications.
 - Contractor shall locate existing utilities in advance of construction operations in the vicinity of proposed works.
 - Contractor shall notify the following utilities or agencies at least five (5) days before starting work shown on these plans:
 State Highway Administration - 531-5533
 Baltimore Gas and Electric Company - Underground Electric Distribution Engineering - "Damage Control" - 234-5691
 Baltimore Gas and Electric Company - Underground Gas Distribution Engineering - 559-0100
 Chesapeake and Potomac Telephone Company - 725-9976
 American Telephone and Telegraph - Cable Location Division - 301-393-3553
 Colonial Pipeline Company - 781-4641
 - Trees are to be protected from damage to maximum extent. Trees located within the construction strip are not to be removed or damaged by the contractor.
 - Contractor shall remove trees, stumps and roots along line of excavation as directed by the Engineer. Payment for such removal shall be included in the unit price bid for excavation and backfill for water and sewer mains.
 - Place regulation "Men Working" and warning signs as required to comply with Maryland State Highway Administration Manual of Traffic Control for Highway Construction and Maintenance Operations.
 - All sewer mains shall be C.S.P.X., V.C.P.X., or A.C.P. Class 2400 unless otherwise noted.
 - The contractor shall provide a joint in all sewer mains within 2'-0" of exterior manhole wall.
 - All manholes shall be 4'-0" inside diameter, unless otherwise noted.
 - All water house connections shall be meter setting for inside.

QUANTITIES		
ITEM	ESTD.	AS BUILT
B'S	152 148 LF	148 LF JIM MANUFACTURING CORP - BELAIR ROAD SUPPLY CO.
4" DIA MH	2 EA	2 EA ATLANTIC CELLULITE PRODUCTS
6" SHC	95 102 LF	102 LF JIM MANUFACTURING CORP - BELAIR ROAD SUPPLY CO.
34" WHC	245 202 LF	202 LF HOWELL METALS - BELAIR ROAD SUPPLY CO. 202 LF
6" W	8 5 LF	GUTTER PIPE CO. S.L.F.
6" X 6" TAPPING SLEEVE & VALVE	1 EA	AMERICAN DARLING - A.P. WATER & SEWER SUPPLIES 1EA
1" WHC	78 72 LF	72 LF HOWELL METALS - BELAIR ROAD SUPPLY CO. 72 LF
4" B.P.H.	1 EA	AMERICAN DARLING
		PROCTER CO. - A.P. WATER & SEWER SUPPLIES 1EA.

GALES SEARCH
 LOTS 1, 2, 3, & 4
 CONTRACT NO. 24-1637-D

DEPARTMENT OF PUBLIC WORKS
 HOWARD COUNTY, MARYLAND
 Director of Public Works: *James A. Helm* 11/6/87
 Chief, Bureau of Engineering: *William E. Ridenour* 11/2/87
 Chief, Bureau of Utilities: *Robert M. Beamer* 11-2-87
 Chief, Land Development Division: *William H. Ridenour* 11-2-87

HUDKINS ASSOCIATES, INC.
 ENGINEERS AND SURVEYORS
 SUITE 231, JOSEPH SQUARE
 5485 HARPERS FARM ROAD
 COLUMBIA, MARYLAND 21046



DES: TKS					
DRN: TKS					
CHK: J.S.					
DATE: 5-23-87	BY:	NO.:	REVISION:	DATE:	
600' SCALE MAP NO. 36 BLOCK NO. 8					

SEWER EXTENSION
 GALES LANE
 CONTRACT NO. 24-1637-D
 SIXTH ELECTION DISTRICT
 HOWARD COUNTY, MARYLAND
 SCALE AS SHOWN
 SHEET 1 OF 1