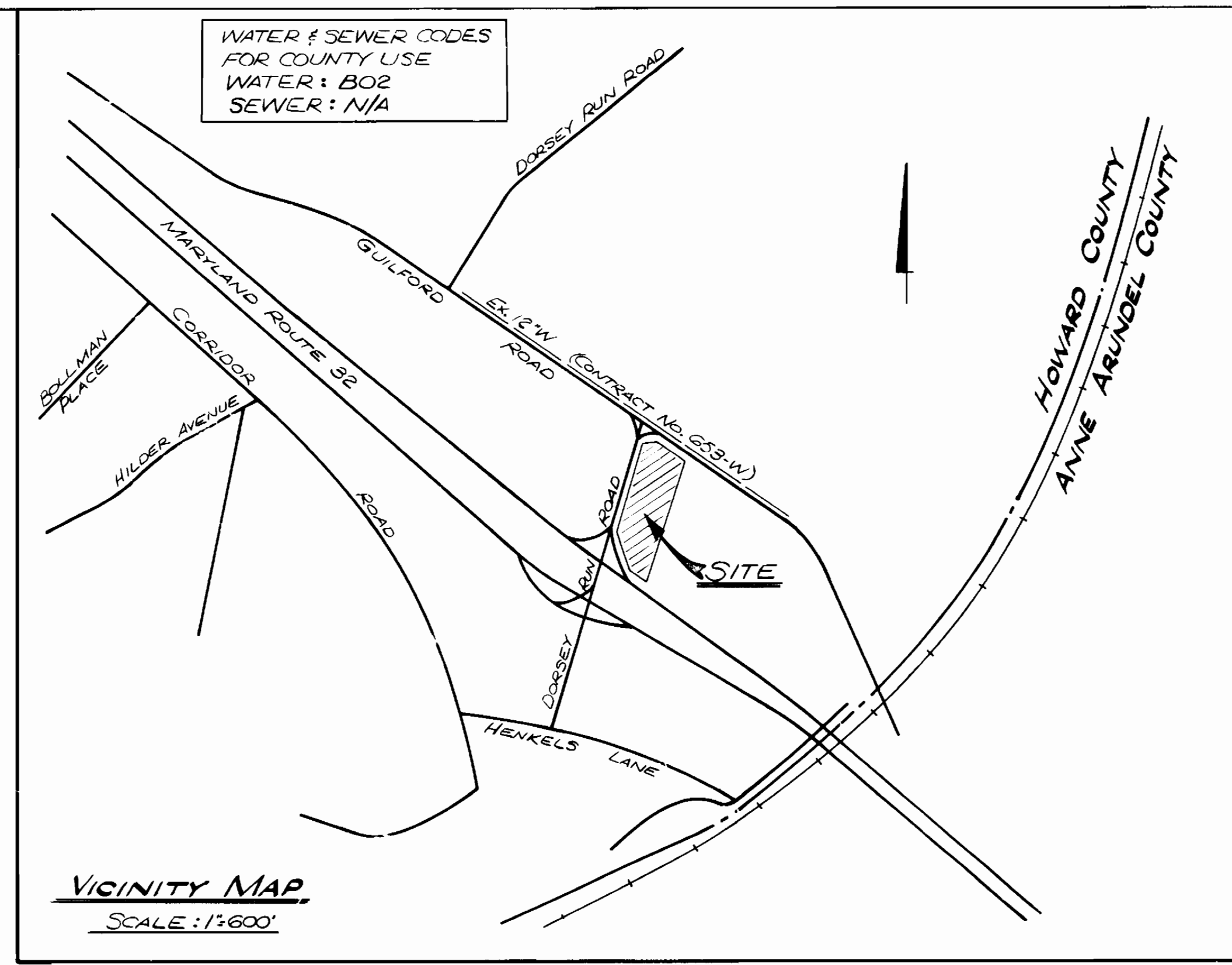
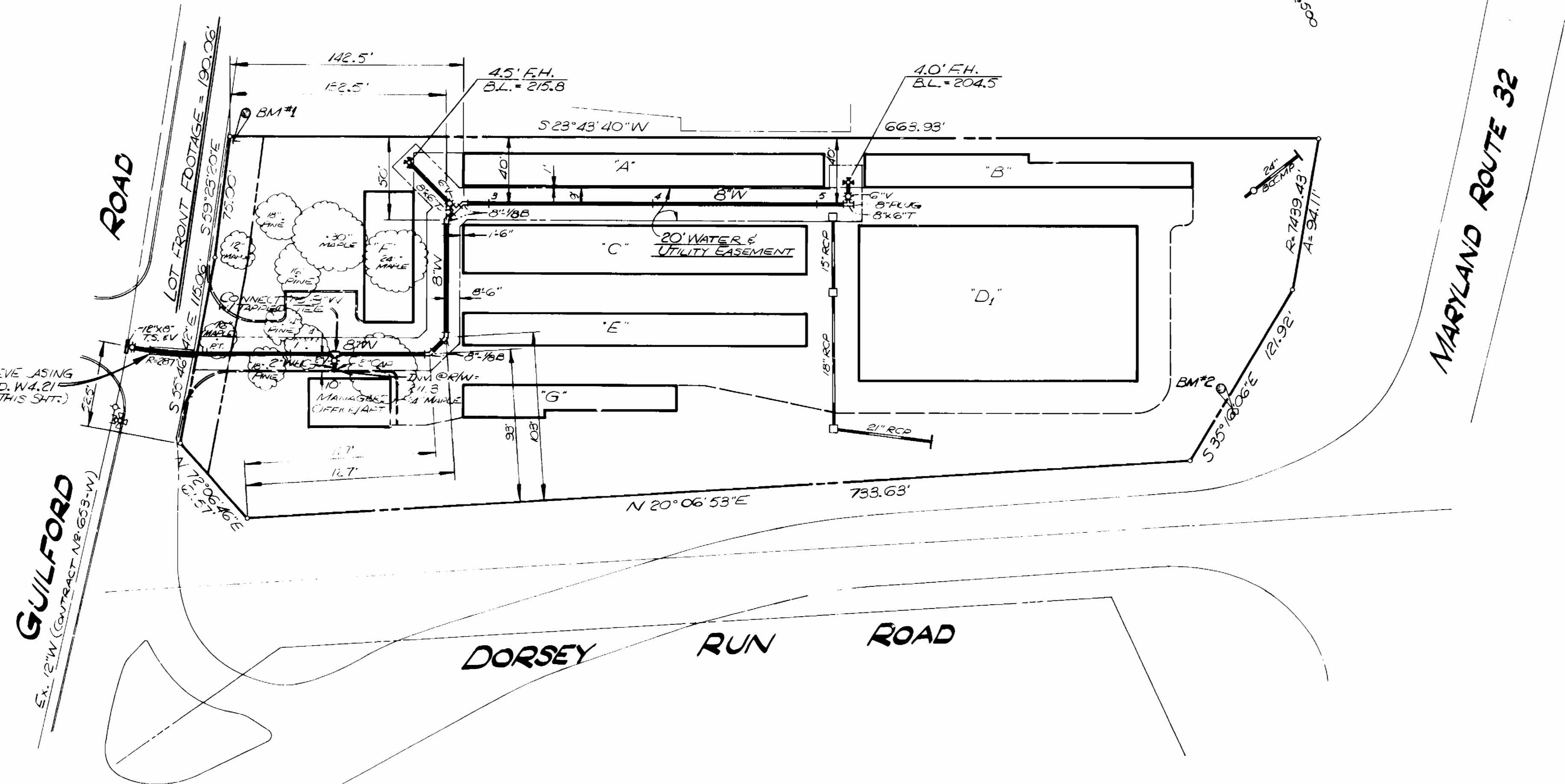


PLAN SCALE: 1"=50'

BM#1 ELEV. 216.57
CUT NAIL @ BOTTOM OF
6G&E ROLE # 232148

BM#2 ELEV. 199.94
6" CONV. MON. MARKED 'VDHT' ON TOP



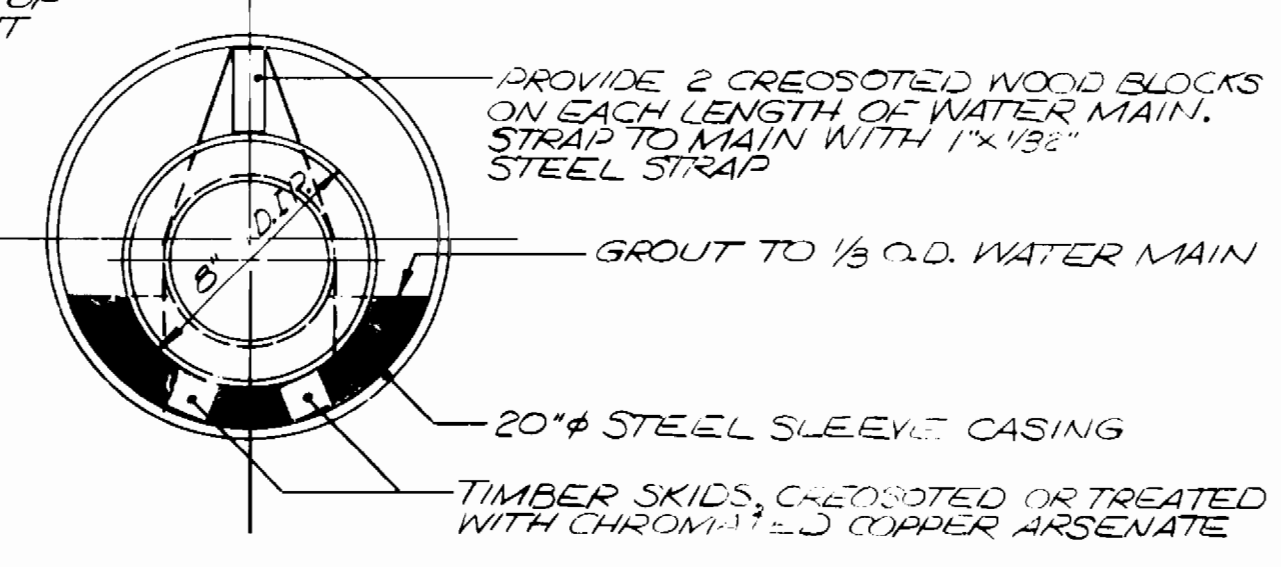
WATER & SEWER CODES
FOR COUNTY USE
WATER: B02
SEWER: N/A

VICINITY MAP
SCALE: 1"=600'

GENERAL NOTES

- APPROXIMATE LOCATION OF EXISTING MAINS ARE SHOWN. THE CONTRACTOR SHALL TAKE ALL NECESSARY PRECAUTIONS TO PROTECT EXISTING MAINS AND SERVICES AND MAINTAIN UNINTERRUPTED SUPPLY. ANY DAMAGE INCURRED SHALL BE REPAIRED IMMEDIATELY TO THE SATISFACTION OF THE ENGINEER, AT THE CONTRACTOR'S EXPENSE.
- ALL HORIZONTAL CONTROLS ARE BASED ON MARYLAND STATE COORDINATES.
- ALL VERTICAL CONTROLS ARE BASED ON U.S.G.S. DATUM.
- ALL PIPE ELEVATIONS SHOWN ARE INVERT ELEVATIONS.
- CLEAR ALL UTILITIES BY A MINIMUM OF 6'. CLEAR ALL POLES BY 2'-0" MINIMUM OR TUNNEL AS REQUIRED.
- FOR DETAILS NOT SHOWN ON THE DRAWINGS, AND FOR MATERIALS AND CONSTRUCTION METHODS, USE HOWARD COUNTY DESIGN MANUAL, VOLUME IV, STANDARD SPECIFICATIONS AND DETAILS FOR CONSTRUCTION. THE CONTRACTOR SHALL HAVE A COPY OF VOLUME IV ON THE JOB.
- WHERE TEST PITS HAVE BEEN MADE ON EXISTING UTILITIES, THEY ARE NOTED BY THE SYMBOL AT THE LOCATION OF THE TEST PIT. A NOTE OR NOTES CONTAINING THE RESULTS OF THE TEST PIT OR PITS IS INCLUDED ON THE DRAWINGS. EXISTING UTILITIES IN THE VICINITY OF THE PROPOSED WORK FOR WHICH TEST PITS HAVE NOT BEEN MADE SHALL BE LOCATED BY THE CONTRACTOR TWO WEEKS IN ADVANCE OF CONSTRUCTION OPERATIONS AT HIS OWN EXPENSE. CONTRACTOR SHALL NOTIFY THE FOLLOWING UTILITIES OR AGENCIES AT LEAST FIVE WORKING DAYS BEFORE STARTING WORK SHOWN ON THESE PLANS:
 - STATE HIGHWAY ADMINISTRATION - 531-5533
 - BALTIMORE GAS & ELECTRIC CO. - CONTRACTOR SERVICE 561-2585
 - BALTIMORE GAS & ELECTRIC CO. - UNDERGROUND DAMAGE CONTROL 274-5621
 - BALTIMORE GAS & ELECTRIC CO. - TROUBLE SHOOTING 298-9013
 - MISS. UTILITY - 1-559-0100
 - COLONIAL PIPELINE CO. - 795-1390
 - BUREAU OF UTILITIES, HOWARD COUNTY DEPARTMENT OF PUBLIC WORKS - 992-2366
- TREES AND SHRUBS ARE TO BE PROTECTED FROM DAMAGE TO MAXIMUM EXTENT. TREES AND SHRUBS LOCATED WITHIN THE CONSTRUCTION STRIP ARE NOT TO BE REMOVED OR DAMAGED BY THE CONTRACTOR.
- CONTRACTOR SHALL REMOVE TREES, STUMPS AND ROOTS ALONG LINE OF EXCAVATION.
- ALL WATER MAINS TO BE 8" UNLESS OTHERWISE NOTED.
- TOPS OF ALL WATER MAINS TO HAVE A MINIMUM OF 3'-1/2" COVER UNLESS OTHERWISE NOTED.
- VALVES ADJACENT TO TEES SHALL BE STRAPPED TO TEES.
- ALL FITTINGS SHALL BE BUTTRESSED OR ANCHORED WITH CONCRETE IN ACCORDANCE WITH THE STANDARD DETAILS UNLESS OTHERWISE PROVIDED FOR ON THE DRAWINGS.
- FIRE HYDRANTS SHALL BE SET TO THE BURY LINE ELEVATIONS SHOWN ON THE DRAWINGS. ALL FIRE HYDRANTS SHALL BE STRAPPED AND BUTTRESSED WITH CONCRETE IN ACCORDANCE WITH STANDARD DETAILS. SOIL AROUND THE FIRE HYDRANT SHALL BE COMPACTED IN ACCORDANCE WITH SECTION 1003 OF THE STANDARD SPECIFICATIONS.
- THE CONTRACTOR SHALL NOT OPERATE ANY WATER MAIN VALVES ON THE EXISTING WATER SYSTEM.
- ALL WATER HOUSE CONNECTIONS SHALL BE FOR AN INSIDE METER JETTING, UNLESS OTHERWISE NOTED.
- EXTEND PIPE AS NECESSARY TO INSTALL PLUG FOR BLOCKING, WHERE WATER MAINS END WITH VALVES.
- STRAP BOLT CRIES AND SPLIT PIPES ARE INTERCHANGEABLE.
- SEDIMENT CONTROL TO BE BUILT IN ACCORDANCE WITH SDP-87-121 ARTICLE 15 AND DETAILS SHOWN ON THIS PLAN.
- SEDIMENT CONTROL SHALL BE DONE IN ACCORDANCE WITH SECTION 219 OF HOWARD COUNTY DESIGN MANUAL.

NOTE:
ANNULAR SPACE @ EACH
END OF CASING SHALL BE
SEALED W/6" OF
CEMENT GROUT



BORING OR JACKING INSTALLATION
TYPE 3
HOWARD COUNTY STD. W-4.21
SCALE: NONE

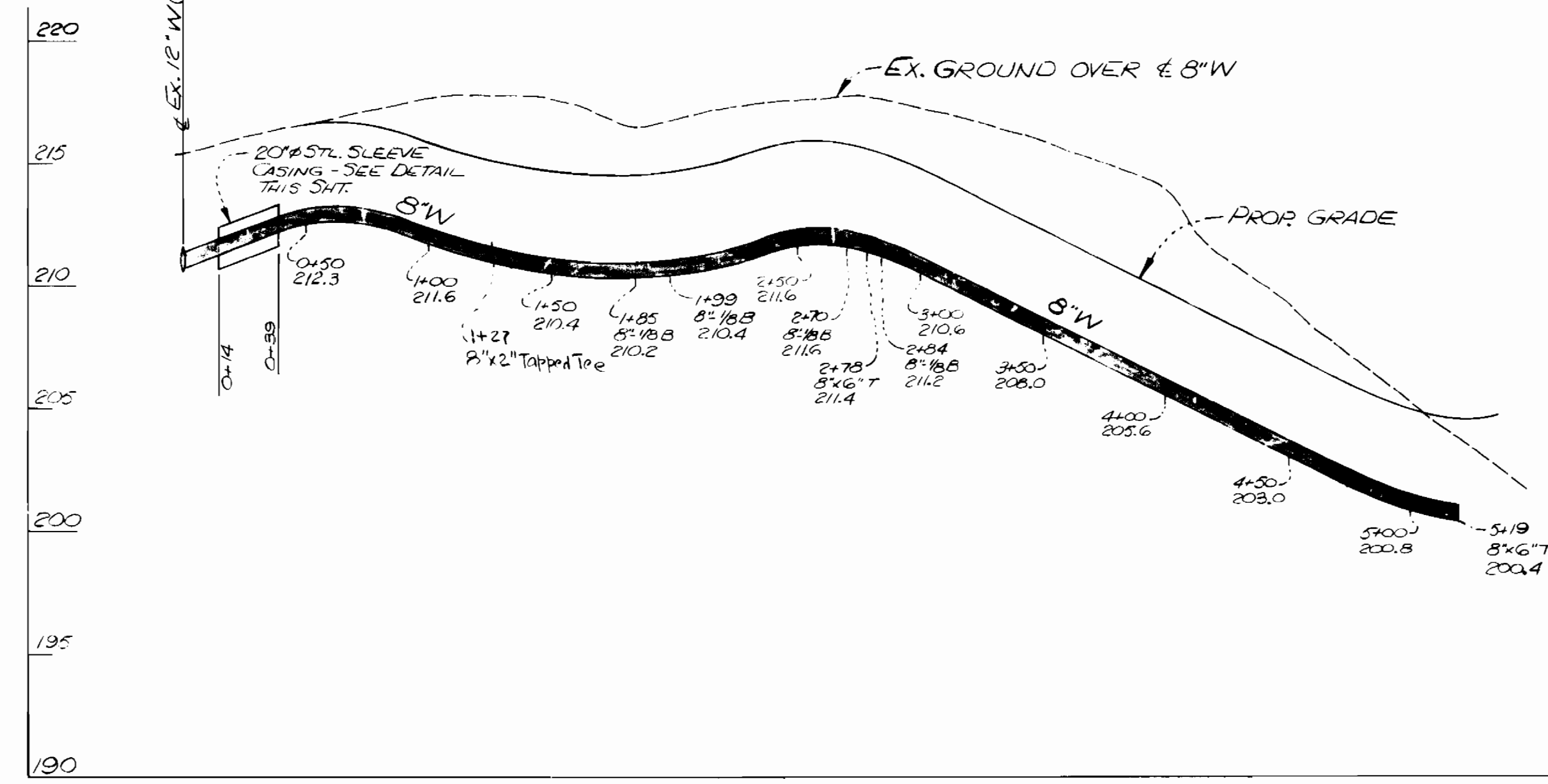
REVIEWED FOR HOWARD S.C.U.
AND MEETS TECHNICAL REQUIREMENTS.
U.S. SOIL CONSERVATION SERVICE

URAINAGE AREA: LITTLE PATUXENT
TYPE OF BUILDINGS: WAREHOUSE/STORAGE
NO. OF WHC: 1
NO. OF LOTS: 1
WATER & SEWER CODE
FOR COUNTY USE
WATER: N/A
SEWER: N/A

THIS DEVELOPMENT PLAN IS APPROVED FOR
OIL EROSION AND SEDIMENT CONTROL
BY THE HOWARD SOIL CONSERVATION DISTRICT
DATE: 7/17/87

SEDIMENT CONTROL MEASURES FOR
THIS CONTRACT WILL BE IMPLEMENTED
IN ACCORDANCE WITH ARTICAL 15
OF THE STANDARD SPECIFICATION, AND
SITE PLANS SDP-87-121

BEFORE BEGINNING CONSTRUCTION, CONTACT
'MISS UTILITY' AT 1-800-257-7777 AT LEAST
48 HOURS PRIOR TO CONSTRUCTION



PROFILE SCALE: HORIZ. 1"=50'
VERT. 1"=5'

ITEM	QUANTITIES		MATERIAL / SUPPLIER
	BID	AS-BUILT	
8" WATER	LF	519	
6" WATER	LF	53	
12" x 8" T.S.&V.	EA	1	
6" VALVES	EA	2	
4.5" FIRE HYDRANT	EA	1	
8" CASING	EA	1	
8" x 6" T	EA	2	
40" FIRE HYDRANT	EA	1	
8" 1/88	EA	4	
BONE & JACK	EA	1	
2" WATER	LF	10	
2" VALVE	EA	1	
8" x 2" TAPPED TEE	EA	1	

DEPARTMENT OF PUBLIC WORKS
HOWARD COUNTY, MARYLAND
DATE: 7/24/87
DATE: 7-21-87

GREENHORNE & O'MARA, INC.
2 RESEARCH PLACE ROCKVILLE, MD. 20850
PHONE (301) 948-0900

DES: JDP
URN: JDP
CHK: R.M.
DATE: 12-86

PLAN FOR
WATER MAIN EXTENSION

PUBLIC STORAGE #462
ANNAPOLIS JUNCTION ROAD
CONTRACT NO. 44-1636-D
FIRST ELECTION DISTRICT
HOWARD CO., MARYLAND

SCALE AS SHOWN
SHEET 1 OF 1