

BILL OF MATERIALS

ITEM	QUAN.	AS BUILT	SUPPLIER
Manhole	6	6	Empire Foundry
8" San. Sewer	1000 LF	1011 LF	J.M. Manufacturing
6" S.H. Conn.	455 LF	524 LF	"
8" Water Main	472 LF	671 LF	Griffin Pipe
6"	245 LF	216 LF	"
8" Tapping Tee Valve	1	1	Muceller
8" Tee	2	2	Griffin Pipe
6" Valve	2	2	Muceller
6" Fire Hyd.	2	2	"
8" 3/32 Band	2	2	Griffin Pipe
8" 1/2 Band	1	1	"
6" Cap	1	1	"
1/2 Drain	1	1	N/A
3/4" W. H. Conn.	450 LF	508 LF	Howell Metal
8" Tee	1	1	Griffin Pipe
1" W. H. Conn.	10'	N/A	Howell Metal

TEST PIT MAR. 3, 1987
U.G. AT&T CONDUIT OPTICAL FIBER

DEPARTMENT OF PUBLIC WORKS
HOWARD COUNTY, MARYLAND

James C. ... 7-2-87
DIRECTOR OF PUBLIC WORKS DATE

Robert W. ... 6-30-87
CHIEF, BUREAU OF UTILITIES DATE

William H. ... 7-2-87
CHIEF, LAND DEVELOPMENT DIVISION DATE

HICKS ENGINEERING COMPANY, INC.
CIVIL ENGINEERS

200 EAST JOPPA ROAD
SUITE 402
TOWSON, MD 21204

DES: J.E.G.	P&S	P&S	7/15/86
DRN: J.E.G. LAW	SR	REVISIONS TO MANHOLE LOCATIONS	9/10/87
CHK: DEH.	G.W.J.	AS BUILT SANITARY	5-2-88
	685	ADDED P.H. STA. 2147 STONECREST DRIVE	4-2-88
		DELETE F.H. STA. 2147	2/24/88
DATE: 6/15/86	BY: NO.	REVISION	DATE

PLAN AND PROFILE
WATER AND SEWER MAINS

CONTRACT NO. 24-1612-D
600' SCALE MAP NO. 31 BLOCK NO.

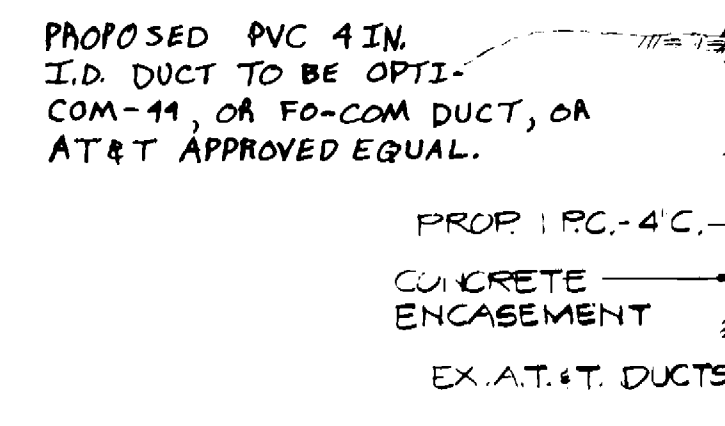
STONEBROOKE TWO
LOTS NO. 1 THRU 19
STONECREST DRIVE AT MONTGOMERY ROAD
ELECTION DISTRICT NO. 2
HOWARD COUNTY, MARYLAND

SCALE AS SHOWN
SHEET 1 OF 2

GENERAL NOTES

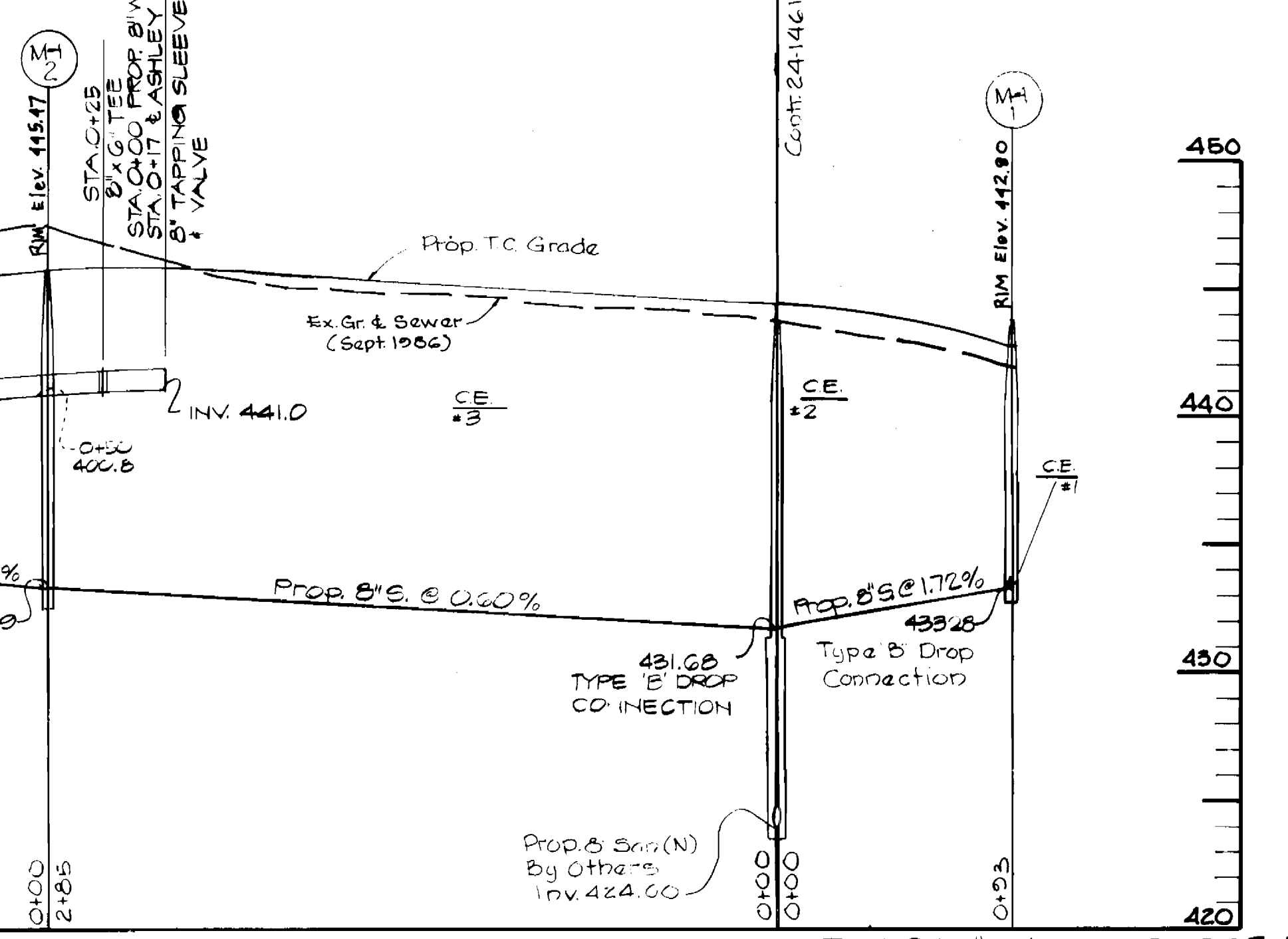
- The approximate location of existing utilities are shown. The Contractor shall take all necessary precautions to protect existing mains and services and maintain uninterrupted supply. Any damage incurred shall be repaired immediately to the satisfaction of the Engineer at the Contractor's expense.
- All horizontal controls are based on Maryland State Coordinates.
- All vertical controls are based on U.S.G.S. Datum.
- All pipe elevations shown are invert elevations, unless otherwise indicated.
- Clear all utilities by a minimum of 6'. Clear all poles by 2'-0" minimum or tunnel as required.
- For all standard details see standards bound in Specifications.
- The Contractor shall locate existing utilities in advance of construction operations in the vicinity of proposed utilities.
- Contractor shall notify the following Utilities or Agencies at least five (5) days before starting work shown on these plans:
 - State Highway Administration 531-5533
 - B.G. & E. Co. (Contractor Services) 850-4020
 - B.G. & E. Co. (Underground Damage Control) 850-9004
 - B.G. & E. Co. (Trough Shooting) 208-9001
 - Miss Utility 1-800-257-7777
 - Colonial Pipeline Co. 795-1300
 - Bureau of Utilities, Howard County D.P.W. 992-2300
 - C&P Telephone Co. 1-800-257-7777
 - A.T. & T. - Cable Location Division 301-865-3808
- Trees are to be protected to maximum extent. Trees located within the construction strip are not to be removed or damaged by the Contractor.
- Contractor shall remove trees, stumps and roots along line of excavation as directed by the Engineer. Payment for such removal shall be included in the unit price bid for excavation and backfill for water and sewer mains.
- Place regulation "Men Working" and warning signs as required to comply with Maryland Highway Administration Manual of Traffic Control for Highway Construction and Maintenance Operations.
- All water mains to be G.I.P., D.I.P., or A.C.P. unless otherwise noted.
- Top of water mains to have a minimum of 3'-1/2" cover unless otherwise noted.
- All valves shall be strapped to trees in accordance with Standard Details.
- Bury line elevations on fire hydrants shall be set to the elevations shown on the drawings. All fire hydrants shall be strapped and buttressed with concrete in accordance with Std. Details. Soil around the fire hydrant to be compacted in accordance with Section 1003 & 1008 of the Standard Specifications.
- All water house connections shall be meter setting for inside.
- All sewer mains shall be CSPX, V.C.P.X., or A.C.P. Class 2400 unless otherwise noted.
- The Contractor shall provide a joint in all sewer mains within 2'-0" of exterior manhole wall.
- All manholes shall be 4'-0" inside diameter, unless otherwise noted.

PLACE 280 FT. OF PROPOSED 4" I.D. DUCT BETWEEN AND OF CONCRETE ENCASUREMENT STA. 3+54.96, TO 3 FE. FROM EAST PROPERTY LINE.

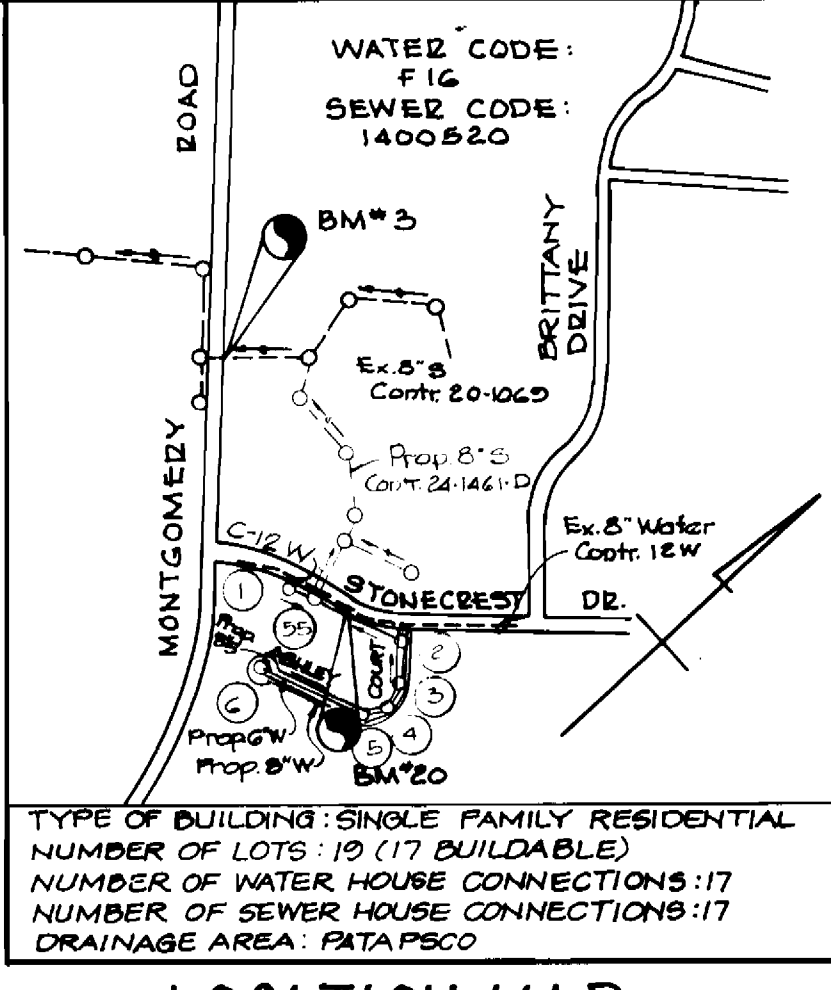


Sediment Control Measures will be implemented in accordance with Section 2D of the Specifications with Road Construction Plan F-87-140.

CONCRETE ENCASUREMENT DETAIL
NO SCALE



PROFILE
Scale: Hor. 1"=50'
Vert. 1"=5'



LOCATION MAP
SCALE: 1"=600'

TYPE OF BUILDING: SINGLE FAMILY RESIDENTIAL
NUMBER OF LOTS: 19 (17 BUILDABLE)
NUMBER OF WATER HOUSE CONNECTIONS: 17
DRAINAGE AREA: 1.64 AC

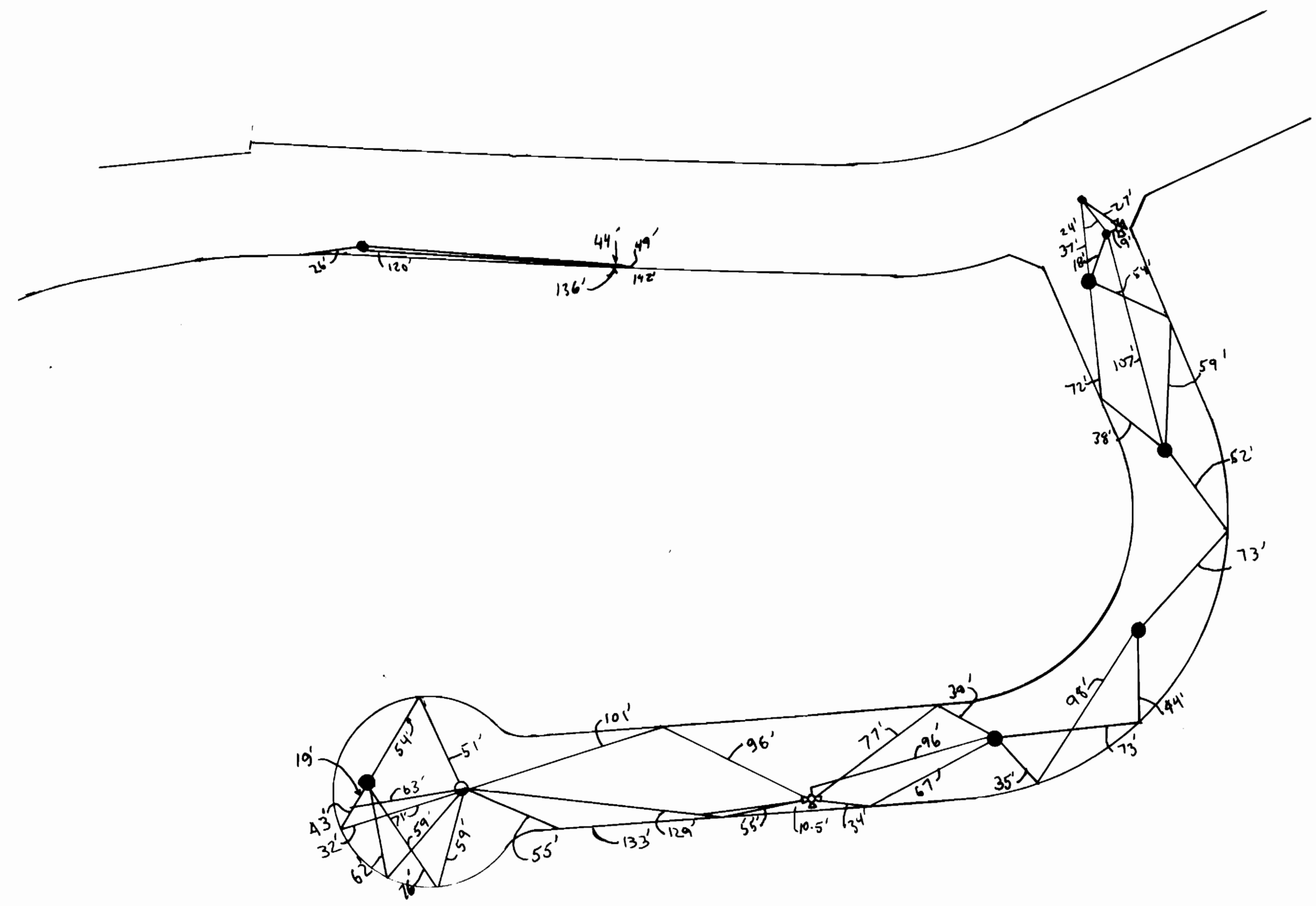
REVIEW FOR HOWARD COUNTY S.C.D. AND MEETS TECHNICAL REQUIREMENTS.

J. Helm 6/26/87
DATE

SOIL CONSERVATION SERVICE

THIS DEVELOPMENT PLAN IS APPROVED FOR SOIL EROSION AND SEDIMENT CONTROL BY THE HOWARD COUNTY SOIL CONSERVATION DISTRICT.

Stephen J. Helm 6/26/87
DATE
APPROVED HOWARD COUNTY S.C.D.



AS BUILT
WATER

AS-BUILT
5-23-86

BRUNING 44 132 69150

DEPARTMENT OF PUBLIC WORKS
HOWARD COUNTY, MARYLAND

DIRECTOR OF PUBLIC WORKS _____ DATE _____ CHIEF, BUREAU OF ENGINEERING _____ DATE _____

DES:	SR.	OVERLAY FOR SHEET 10P1
DRN:		
CHK:		
DATE:	BY NO.	REVISION

PLAN AND PROFILE
WATER AND SEWER MAINS

CONTRACT NO. 29-1612-D

600' SCALE MAP NO. 31 BLOCK NO. _____

STONEBROOKE TWO
LOTS NO. 1 THRU 19
STONECREST DRIVE AT MONTGOMERY ROAD
ELECTION DISTRICT NO. 2
HOWARD COUNTY, MARYLAND

SCALE
AS
SHOWN

SHEET
2 OF 2