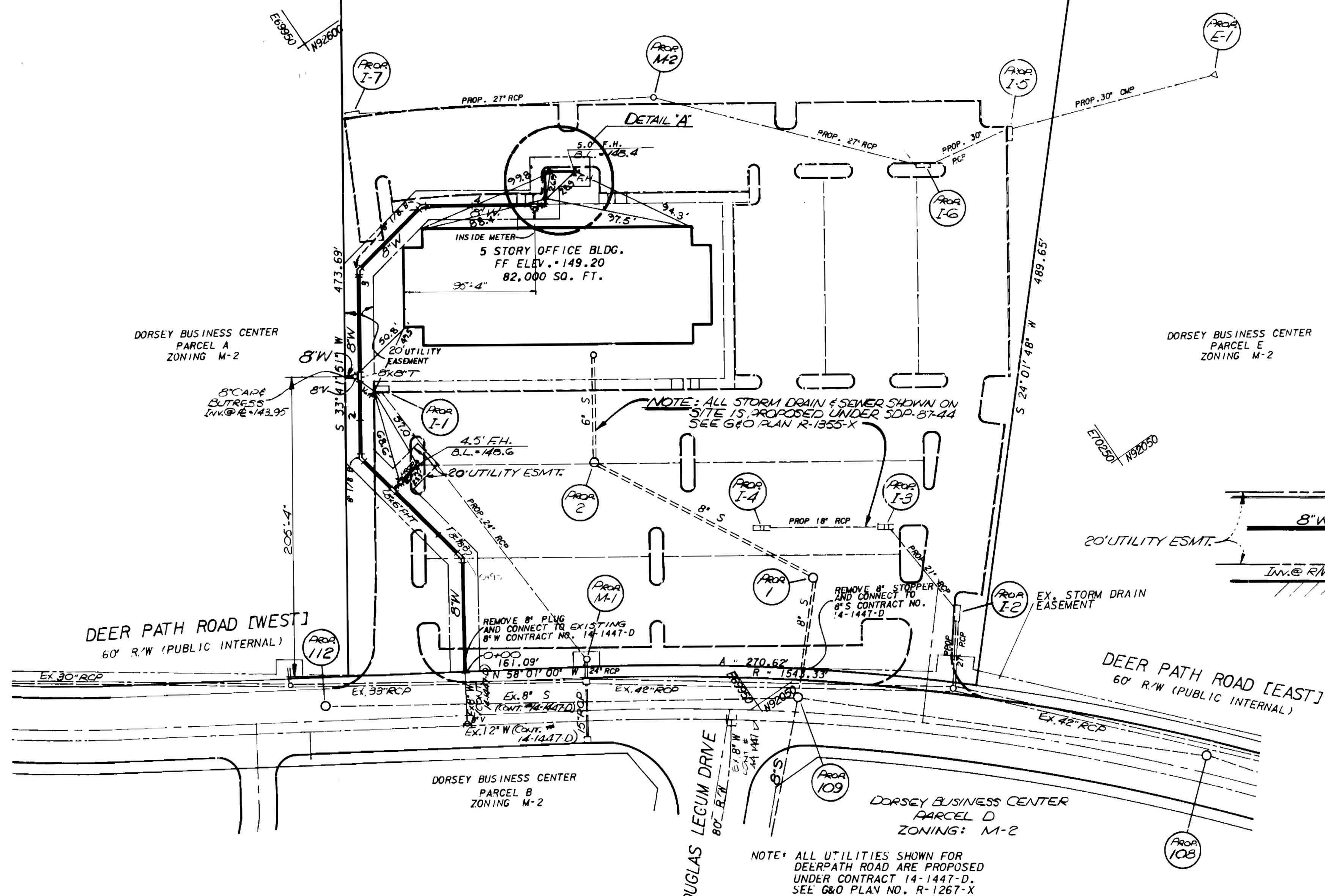
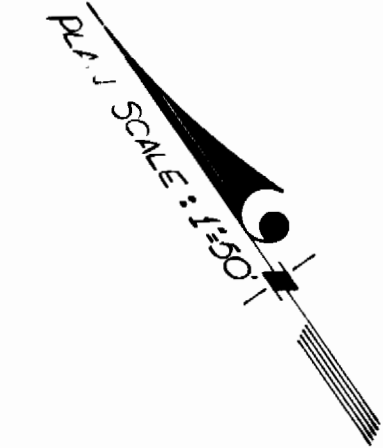


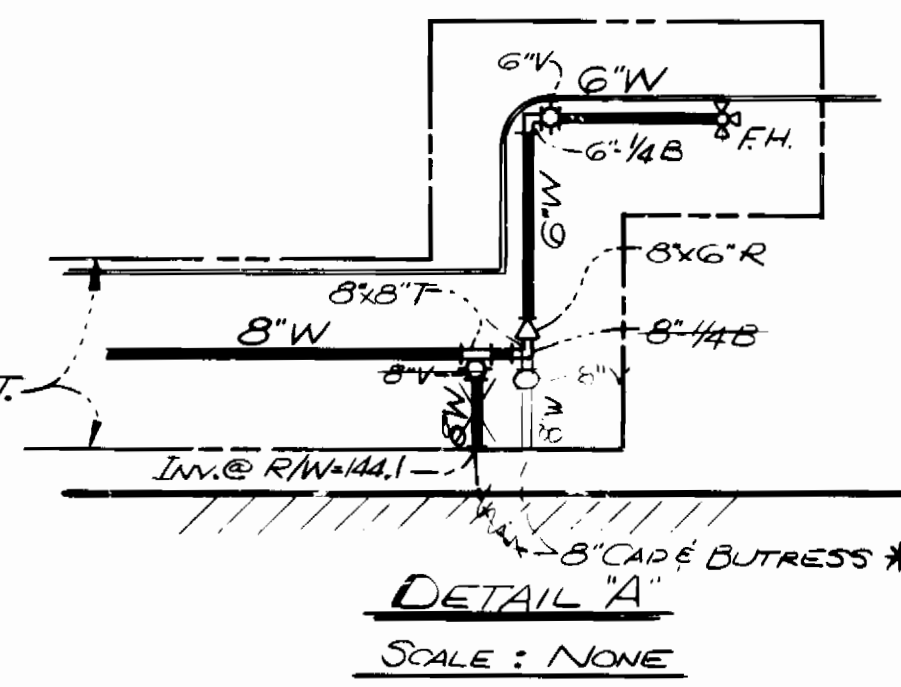
MARYLAND STATE HIGHWAY ADMINISTRATION
FUTURE MARYLAND
RTE. 100

N 56° 18' 09" W 311.19'
N 56° 18' 23" W 190.61'

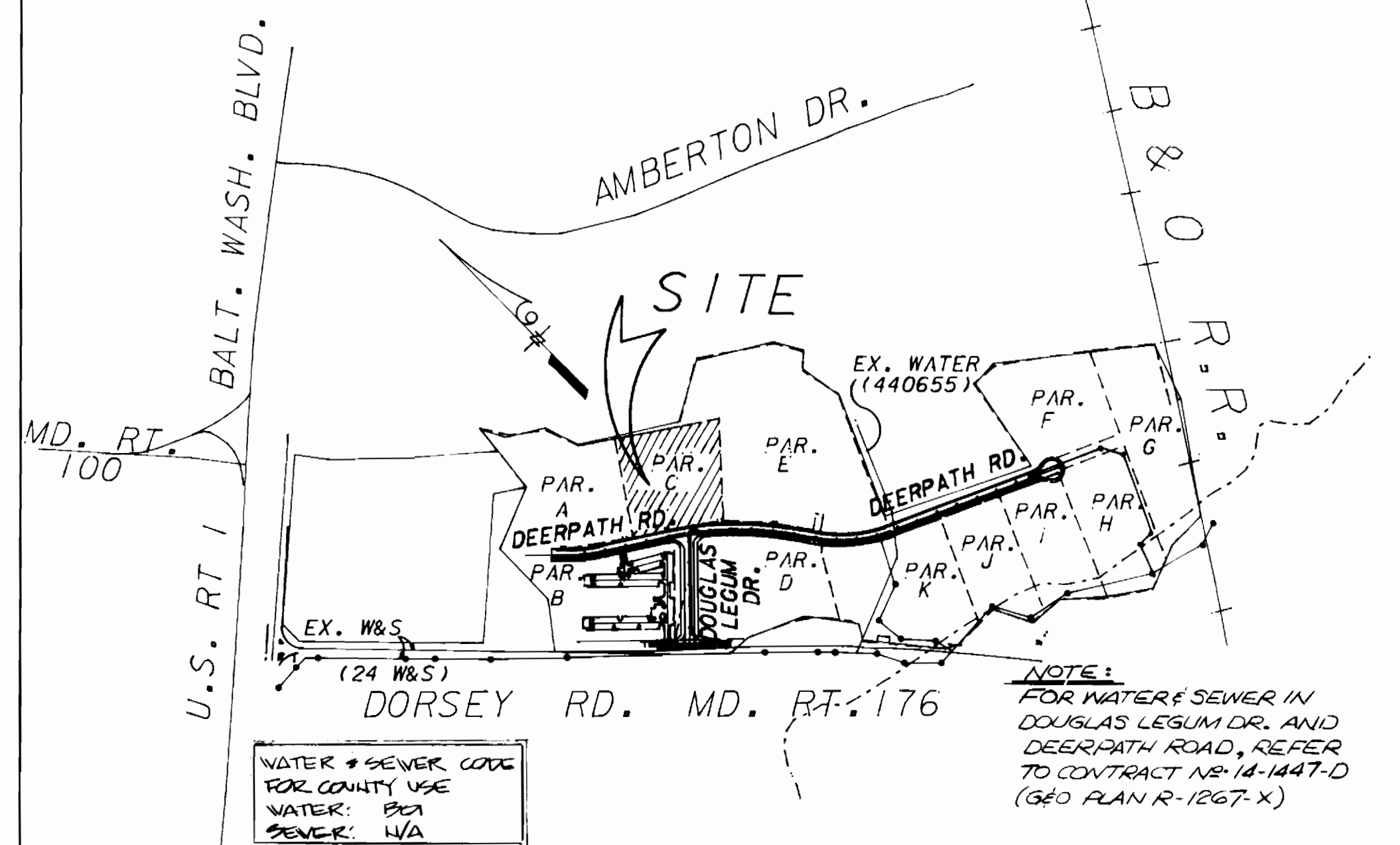


NOTE: ALL STORM DRAIN & SEWER SHOWN ON SITE IS PROPOSED UNDER SDP-87-44 SEE G&O PLAN R-1855-X

NOTE: ALL UTILITIES SHOWN FOR DEERPATH ROAD ARE PROPOSED UNDER CONTRACT 14-1447-D. SEE G&O PLAN NO. R-1267-X FOR ALL CONSTRUCTION DETAILS.



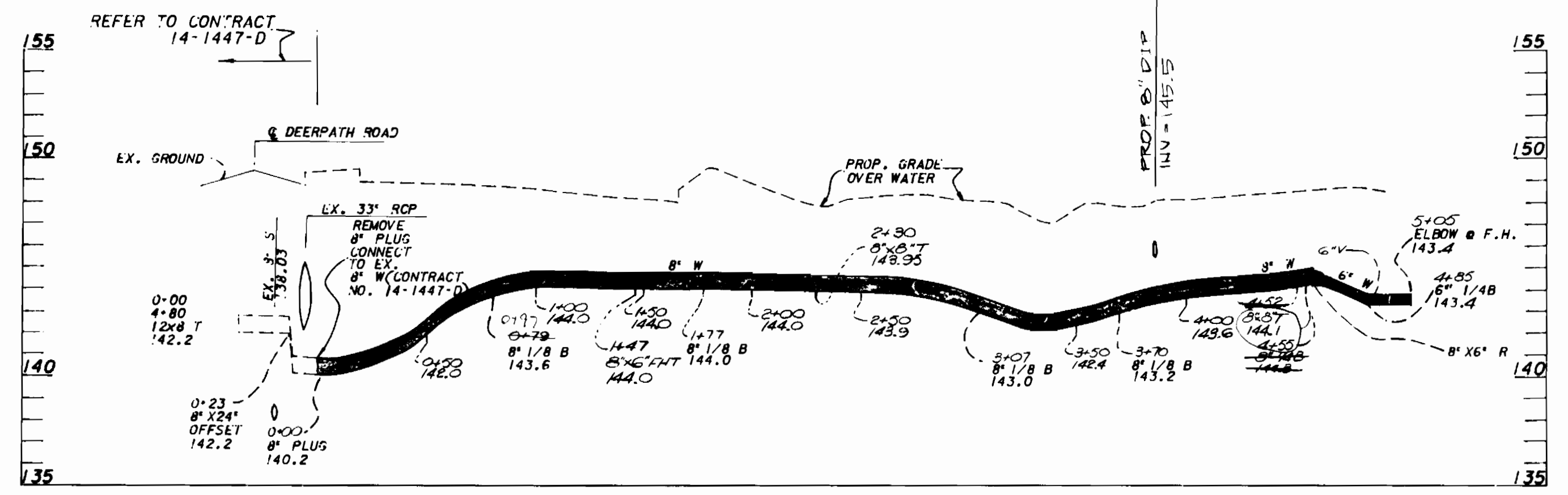
NOTE: SEE STD. DETAIL W3.44 FOR FIRE SUPPLY METER. SEE SPECIAL PROVISIONS, SECTION 5.



VICINITY MAP
SCALE 1" = 600'

GENERAL NOTES

- APPROXIMATE LOCATION OF EXISTING MAINS ARE SHOWN. THE CONTRACTOR SHALL TAKE ALL NECESSARY PRECAUTIONS TO PROTECT EXISTING MAINS AND SERVICES AND MAINTAIN UNINTERRUPTED SUPPLY. ANY DAMAGE INCURRED SHALL BE REPAIRED IMMEDIATELY TO THE SATISFACTION OF THE ENGINEER, AT THE CONTRACTOR'S EXPENSE.
- ALL HORIZONTAL CONTROLS ARE BASED ON MARYLAND STATE COORDINATES.
- ALL VERTICAL CONTROLS ARE BASED ON U.S.G.S. DATUM.
- ALL PIPE ELEVATIONS SHOWN ARE INVERT ELEVATIONS.
- CLEAR ALL UTILITIES BY A MINIMUM OF 6'. CLEAR ALL POLES BY 2'-0" MINIMUM OR TUNNEL AS REQUIRED.
- FOR DETAILS NOT SHOWN ON THE DRAWINGS, AND FOR MATERIALS AND CONSTRUCTION METHODS, USE HOWARD COUNTY DESIGN MANUAL, VOLUME IV, STANDARD SPECIFICATIONS AND DETAILS FOR CONSTRUCTION. THE CONTRACTOR SHALL HAVE A COPY OF VOLUME IV ON THE JOB.
- WHERE TEST PITS HAVE BEEN MADE ON EXISTING UTILITIES, THEY ARE NOTED BY THE SYMBOL AT THE LOCATION OF THE TEST PIT. A NOTE OR NOTES CONTAINING THE RESULTS OF THE TEST PIT OR PITS IS INCLUDED ON THE DRAWINGS. EXISTING UTILITIES IN THE VICINITY OF THE PROPOSED WORK FOR WHICH TEST PITS HAVE NOT BEEN MADE SHALL BE LOCATED BY THE CONTRACTOR TWO WEEKS IN ADVANCE OF CONSTRUCTION OPERATIONS AT HIS OWN EXPENSE. CONTRACTOR SHALL NOTIFY THE FOLLOWING UTILITIES OR AGENCIES AT LEAST FIVE WORKING DAYS BEFORE STARTING WORK SHOWN ON THESE PLANS:
 - STATE HIGHWAY ADMINISTRATION 531-5533
 - BALTIMORE GAS & ELECTRIC CO. - CONTRACTOR SERVICE 561-2585
 - BALTIMORE GAS & ELECTRIC CO. - UNDERGROUND DAMAGE CONTROL 234-5621
 - BALTIMORE GAS & ELECTRIC CO. - TROUBLE SHOOTING 298-3013
 - MISS UTILITY 1-559-0100
 - COLONIAL PIPELINE CO. 795-1390
 - BUREAU OF UTILITIES, HOWARD COUNTY 992-2366
- TREES AND SHRUBS ARE TO BE PROTECTED FROM DAMAGE TO MAXIMUM EXTENT. TREES AND SHRUBS LOCATED WITHIN THE CONSTRUCTION STRIP ARE NOT TO BE REMOVED OR DAMAGED BY THE CONTRACTOR.
- CONTRACTOR SHALL REMOVE TREES, STUMPS AND ROOTS ALONG LINE OF EXCAVATION.
- ALL WATER MAINS TO BE D.I.P. UNLESS OTHERWISE NOTED.
- TOPS OF ALL WATER MAINS TO HAVE A MINIMUM OF 3-1/2' COVER UNLESS OTHERWISE NOTED.
- VALVES ADJACENT TO TEES SHALL BE STRAPPED TO TEES.
- ALL FITTINGS SHALL BE BUTRESSED OR ANCHORED WITH CONCRETE IN ACCORDANCE WITH THE STANDARD DETAILS UNLESS OTHERWISE PROVIDED FOR ON THE DRAWINGS.
- FIRE HYDRANTS SHALL BE SET TO THE BURY LINE ELEVATIONS SHOWN ON THE DRAWINGS. ALL FIRE HYDRANTS SHALL BE STRAPPED AND BUTRESSED WITH CONCRETE IN ACCORDANCE WITH STANDARD DETAILS. SOIL AROUND THE FIRE HYDRANT SHALL BE COMPACTED IN ACCORDANCE WITH SECTION 1003 OF THE STANDARD SPECIFICATIONS.
- THE CONTRACTOR SHALL NOT OPERATE ANY WATER MAIN VALVES ON THE EXISTING WATER SYSTEM.
- ALL WATER HOSE CONNECTIONS SHALL BE FOR AN INSIDE METER SPLITTING, UNLESS OTHERWISE NOTED. EXTEND PIPE AS NECESSARY TO INSTALL PLUG FOR BLOCKING. WIRE WATER MAINS END WITH VALVES.
- ALL SEWER MAINS SHALL BE C.S.P.X., D.I.P., V.C.P.X., A.C.P., CLASS 2400 OR P.V.C. UNLESS OTHERWISE NOTED.
- THE CONTRACTOR SHALL PROVIDE A JOINT IN ALL SEWER MAINS WITHIN 2'-0" OF EXTERIOR MANHOLE WALL.
- ALL MANHOLES SHALL BE 4'-0" INSIDE DIAMETER UNLESS OTHERWISE NOTED.
- ORIGINAL GROUND OVER WATER AND SEWER WAS TAKEN FROM AERIAL PHOTOGRAPHY PREPARED BY GREENHORNE & O'MARA, INC. AND VERIFIED BY FIELD SURVEY IN NOVEMBER 1985.
- SEDIMENT CONTROL TO BE BUILT IN ACCORDANCE WITH ARTICLE 15 AND DETAILS SHOWN ON THIS PLAN.
- ALL SERVICE CLAMPS ARE TO HAVE STAINLESS STEEL STRAPS.



PROFILE SCALE: HORIZ. 1"=50'
VERT. 1"=5'

REVIEWED FOR HOWARD S.C.D. AND MEETS TECHNICAL REQUIREMENTS.
John F. Kelly 10-11-86
U.S.D. SOIL CONSERVATION SERVICE

DRAINAGE AREA: PATAPSCO
TYPE OF BUILDINGS: OFFICE
NO. OF WHC: 2
NO. OF LOTS: 1
WATER & SEWER CODE FOR COUNTY USE
WATER: B01
SEWER: N/A
SEDIMENT CONTROL MEASURES FOR THIS CONTRACT WILL BE IMPLEMENTED IN ACCORDANCE WITH SECTION 219 OF THE STANDARD SPECIFICATION, AND SITE PLANS SDP-87-44

BEFORE BEGINNING CONSTRUCTION, CONTACT 'MISS UTILITY' AT 1-800-257-7777 AT LEAST 48 HOURS PRIOR TO CONSTRUCTION

ITEM	QUANTITIES		MATERIAL / SUPPLIER
	BID	AS-BUILT	
8" WATER	LF 475	465	CIRCLE C. PIPE
6" WATER	LF 75	75	"
6" VALVES	EA 2	2	USE PIPE
5.0' FIRE HYDRANT	EA 2	2	"
8" CAP	EA 2	2	"
8" X 8" T	EA 2	2	"
8" I/B	EA 4	4	"
8" I/4B	EA 1	1	"
8V	EA 2	2	"
4.5' FIRE HYDRANT	EA 1	1	"
8" I/4B	EA 1	0.011	"
8" X 6" FAT	EA 1	1	"
8" X 6" RED	EA 1	1	"

DEPARTMENT OF PUBLIC WORKS
HOWARD COUNTY, MARYLAND
11-17-86
Robert H. Mammone
DIRECTOR OF PUBLIC WORKS
11-17-86
Robert H. Mammone
CHIEF, BUREAU OF ENGINEERING
11-17-86
Robert H. Mammone
CHIEF, LAND DEVELOPMENT DIVISION

GREENHORNE & O'MARA, INC.
2 RESEARCH PLACE ROCKVILLE, MD. 20850
PHONE (301) 948-0900
11-17-86
Robert H. Mammone

DES: M/L
DRN: JDP
CHK: RHM
DATE: OCT. 1986

PLAN FOR WATER MAIN EXTENSION

DORSEY BUSINESS CENTER
SECTION 1
PARCEL 'C'
TAX MAP - 37
FIRST ELECTION DISTRICT
HOWARD CO., MARYLAND
SCALE AS SHOWN
SHEET 1 of 1

600' SCALE MAP NO. 37 BLOCK NO. 24 CONTRACT # 44-18210