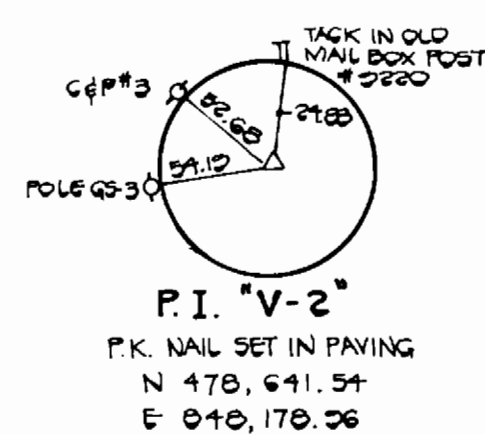
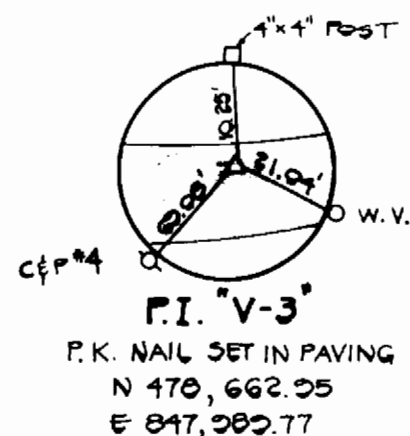
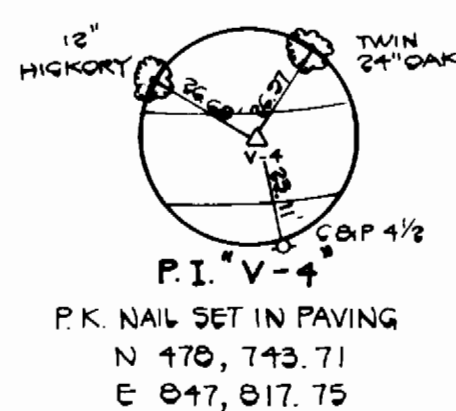
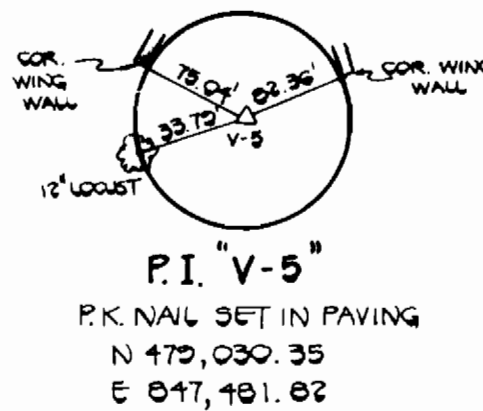


BENCH MARKS

B.M. #3 ELEV. 288.97'
 1" CUT ON WING WALL OF EX. BRIDGE
 30' NORTHWEST OF P.I. V-6

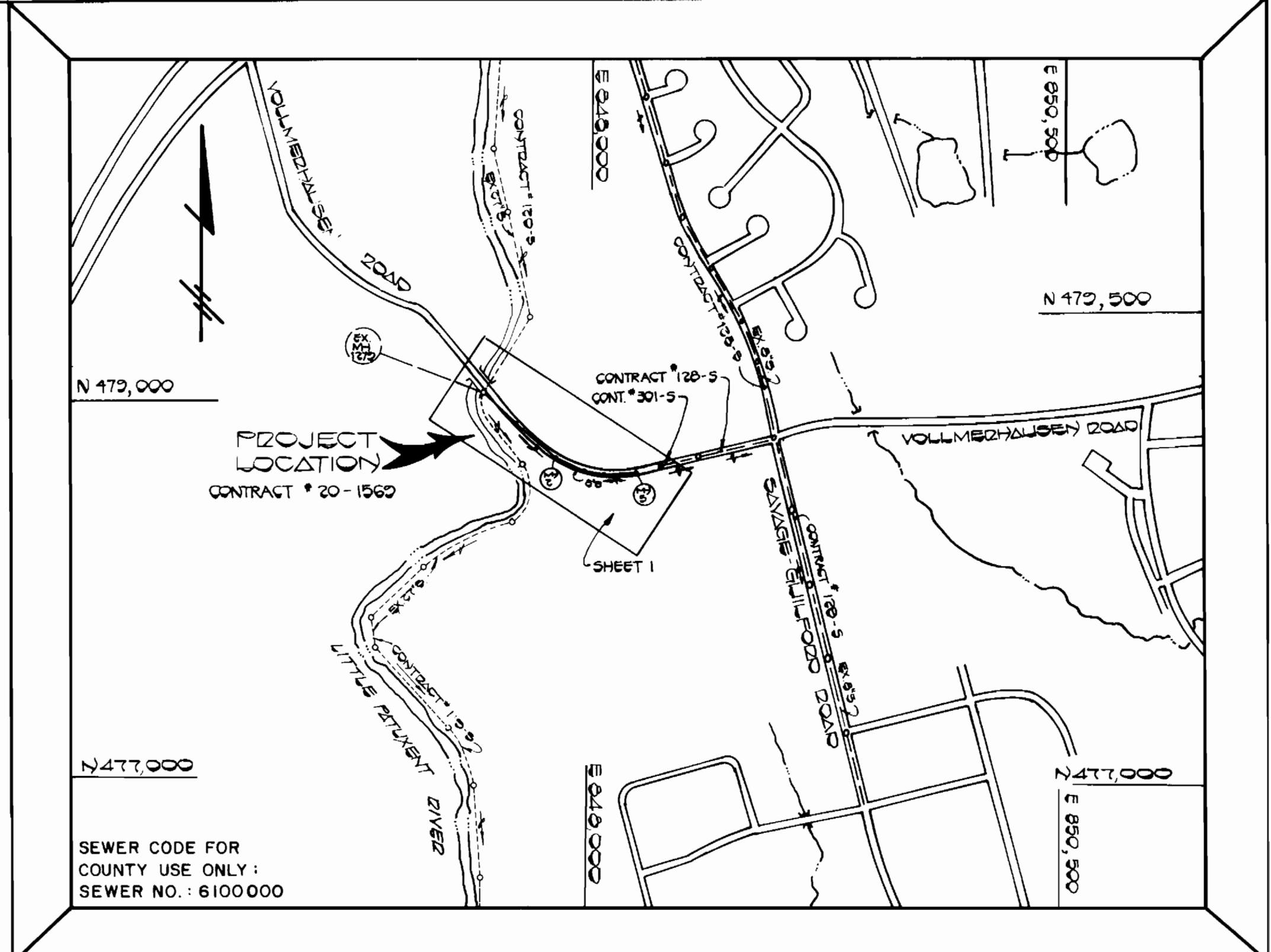
B.M. #1 ELEV. 294.51'
 ROADSIDE BONNET BOLT OR EX. FIRE-
 HYDRANT; SOUTH SIDE OF VOLLMERHAUSEN
 ROAD, 115' EAST OF P.I. V-2



SEWER MAIN STAKE - OUT TABLE

MANHOLE	DISTANCE	OFFSET
MH #1	284' FROM V-4 TOWARDS V-5	20' LEFT
MH #2	120' FROM V-3 TOWARDS V-4	14' LEFT
MH #3	30' FROM V-3 TOWARDS V-4	22.5' LEFT
MH #4	121' FROM V-2 TOWARDS V-3	26' LEFT
MH #5	35' BEYOND V-2, V-3 TOWARDS V-2 EXTENDED	27' LEFT

RESTORATION SCHEDULE
 ENTIRE PROJECT: EX. MH #1272 TO MH #5
 MATERIAL: BITUMINOUS CONCRETE -
 WITHIN EX. PAVED ROADWAY -
 SEE SPECIFICATIONS



SEWER CODE FOR
 COUNTY USE ONLY:
 SEWER NO.: 6100000

VICINITY MAP

SCALE: 1"=600'

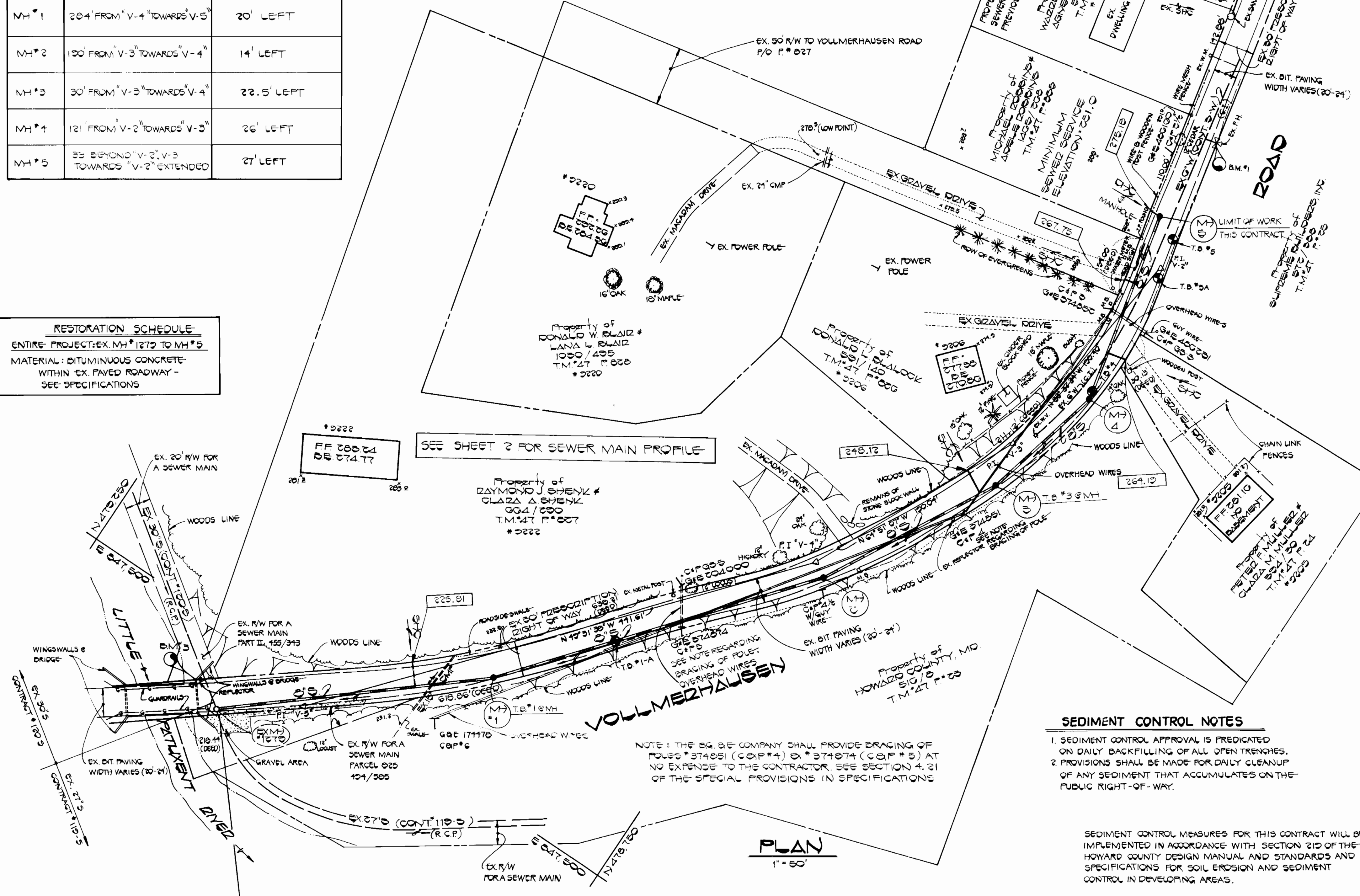
GENERAL NOTES

- APPROXIMATE LOCATION OF EXISTING MAINS ARE SHOWN. THE CONTRACTOR SHALL TAKE ALL NECESSARY PRECAUTIONS TO PROTECT EXISTING MAINS AND SERVICES AND MAINTAIN UNINTERRUPTED SUPPLY. ANY DAMAGE INCURRED SHALL BE REPAIRED IMMEDIATELY TO THE SATISFACTION OF THE ENGINEER AT THE CONTRACTOR'S EXPENSE.
- ALL HORIZONTAL CONTROLS ARE BASED ON MARYLAND STATE COORDINATES.
- ALL VERTICAL CONTROLS ARE BASED ON U.S.G.S. DATUM.
- ALL PIPE ELEVATIONS SHOWN ARE INVERT ELEVATIONS.
- CLEAR ALL UTILITIES BY A MINIMUM OF 6'.
- FOR DETAILS NOT SHOWN ON THE DRAWINGS, AND FOR MATERIALS AND CONSTRUCTION METHODS, USE HOWARD COUNTY DESIGN MANUAL, VOLUME IV, STANDARD SPECIFICATIONS AND DETAILS FOR CONSTRUCTION. THE CONTRACTOR SHALL HAVE A COPY OF VOLUME IV ON THE JOB.
- WHERE TEST PITS HAVE BEEN MADE ON EXISTING UTILITIES, THEY ARE NOTED BY THE SYMBOL [M] AT THE LOCATION OF THE TEST PIT. A NOTE OR NOTES CONTAINING THE RESULTS OF THE TEST PIT OR PITS IS INCLUDED ON THE DRAWINGS. EXISTING UTILITIES IN THE VICINITY OF THE PROPOSED WORK FOR WHICH TEST PITS HAVE NOT BEEN DUG SHALL BE VERIFIED BY THE CONTRACTOR TO HIS OWN SATISFACTION. ANY DAMAGE TO EXISTING FACILITIES DUE TO THE CONTRACTOR'S NEGLIGENCE SHALL BE REPAIRED AT THE CONTRACTOR'S EXPENSE.
- CONTRACTOR SHALL NOTIFY THE FOLLOWING UTILITIES OR AGENCIES AT LEAST FIVE WORKING DAYS BEFORE STARTING WORK SHOWN ON THESE PLANS:
 C & P TELEPHONE COMPANY - 1-800-257-7777
 STATE HIGHWAY ADMINISTRATION - 531-5833
 BALTIMORE GAS & ELECTRIC CO. - CONTRACTOR SERVICES 850-4620
 BALTIMORE GAS & ELECTRIC CO. - UNDER GROUND DAMAGE CONTROL - 859-9004
 BALTIMORE GAS & ELECTRIC CO. - TROUBLE SHOOTING - 298-9001
 MISS UTILITY - 1-559-0100
 COLONIAL PIPELINE CO. - 795-1390
 BUREAU OF UTILITIES, HOWARD COUNTY DEPARTMENT OF PUBLIC WORKS - 992-2366
- TREES AND SHRUBS ARE TO BE PROTECTED FROM DAMAGE TO MAXIMUM EXTENT. TREES AND SHRUBS LOCATED WITHIN THE CONSTRUCTION STRIP ARE NOT TO BE REMOVED OR DAMAGED BY THE CONTRACTOR.
- CONTRACTOR SHALL REMOVE TREES, STUMPS AND ROOTS ALONG THE LINE OF EXCAVATION. PAYMENT FOR SUCH REMOVAL SHALL BE INCLUDED IN THE UNIT PRICE BID FOR CONSTRUCTION OF THE MAIN.
- ALL SEWER MAINS SHALL BE C.S.P.X., R.C.S.P., V.C.P.X., A.C.P. CLASS 2400 OR P.V.C. UNLESS OTHERWISE NOTED.
- THE CONTRACTOR SHALL PROVIDE A JOINT IN ALL SEWER MAINS WITHIN 2'-0" OF EXTERIOR MANHOLE WALL.
- ALL MANHOLES SHALL BE 4'-0" INSIDE DIAMETER UNLESS OTHERWISE NOTED.
- T.B. DENOTES TEST BORING.
- MANHOLES SHOWN WITH 12" AND 16" WALLS ARE FOR BRICK MANHOLES ONLY.
- MANHOLES DESIGNATED W.T. IN PLAN AND PROFILE SHALL HAVE WATERTIGHT FRAME AND COVERS, STANDARD DETAIL G5.52, WHERE WATERTIGHT MANHOLE FRAME AND COVER IS USED, SET TOP OF FRAME 1'-6" ABOVE FINISHED GRADE UNLESS OTHERWISE NOTED ON THE DRAWINGS.
- HOUSE(S) WITH THE SYMBOL "C.N.S." INDICATES THAT THE CELLAR CANNOT BE SERVED.
- INVERTS OF THE SEWER HOUSE CONNECTIONS AT THE PROPERTY LINE ARE INDICATED BY THE SYMBOL [251.08]

SEDIMENT CONTROL NOTES

- SEDIMENT CONTROL APPROVAL IS PREREQUISITE ON DAILY BACKFILLING OF ALL OPEN TRENCHES.
- PROVISIONS SHALL BE MADE FOR DAILY CLEANUP OF ANY SEDIMENT THAT ACCUMULATES ON THE PUBLIC RIGHT-OF-WAY.

SEDIMENT CONTROL MEASURES FOR THIS CONTRACT WILL BE IMPLEMENTED IN ACCORDANCE WITH SECTION 210 OF THE HOWARD COUNTY DESIGN MANUAL AND STANDARDS AND SPECIFICATIONS FOR SOIL EROSION AND SEDIMENT CONTROL IN DEVELOPING AREAS.



PLAN
 1" = 50'

REVIEWED FOR HOWARD COUNTY SOIL CONSERVATION DISTRICT AND MEETS TECHNICAL REQUIREMENTS.
 [Signature]
 U.S. SOIL CONSERVATION SERVICE DATE: _____

THIS PLAN IS APPROVED FOR EROSION AND SEDIMENT CONTROL BY THE HOWARD COUNTY SOIL CONSERVATION DISTRICT.
 APPROVED
 [Signature]
 HOWARD COUNTY SOIL CONSERVATION DISTRICT DATE: 1/7/87

ITEM	QUANTITIES		
	EST'D	AS BUILT	SUPPLIED
6" SEWED	348 LF		
6" SHC	60 LF		
MANHOLES	6 EA		

DEPARTMENT OF PUBLIC WORKS
 HOWARD COUNTY, MARYLAND

[Signature] 1-6-87
 DIRECTOR OF PUBLIC WORKS

[Signature] 1/6/87
 CHIEF, BUREAU OF UTILITIES

[Signature] 1-2-87
 CHIEF, BUREAU OF ENGINEERING

[Signature] 12/31/86
 CHIEF, UTILITY DESIGN DIVISION

FISHER, COLLINS AND CARTER, INC. #9757
 CONSULTING ENGINEERS AND LAND SURVEYORS
 8388 COURT AVENUE
 ELLICOTT CITY, MARYLAND 21043

STATE OF MARYLAND
 REGISTERED PROFESSIONAL ENGINEER
 [Signature]
 TERRELL A. FISHER DATE: _____

DES:	DRN:	CHK:	DATE:	BY:	NO.:	REVISION:	DATE:	NO.:
P.W.K.	JO/DB.S.	T.A.F.	12/10/86					

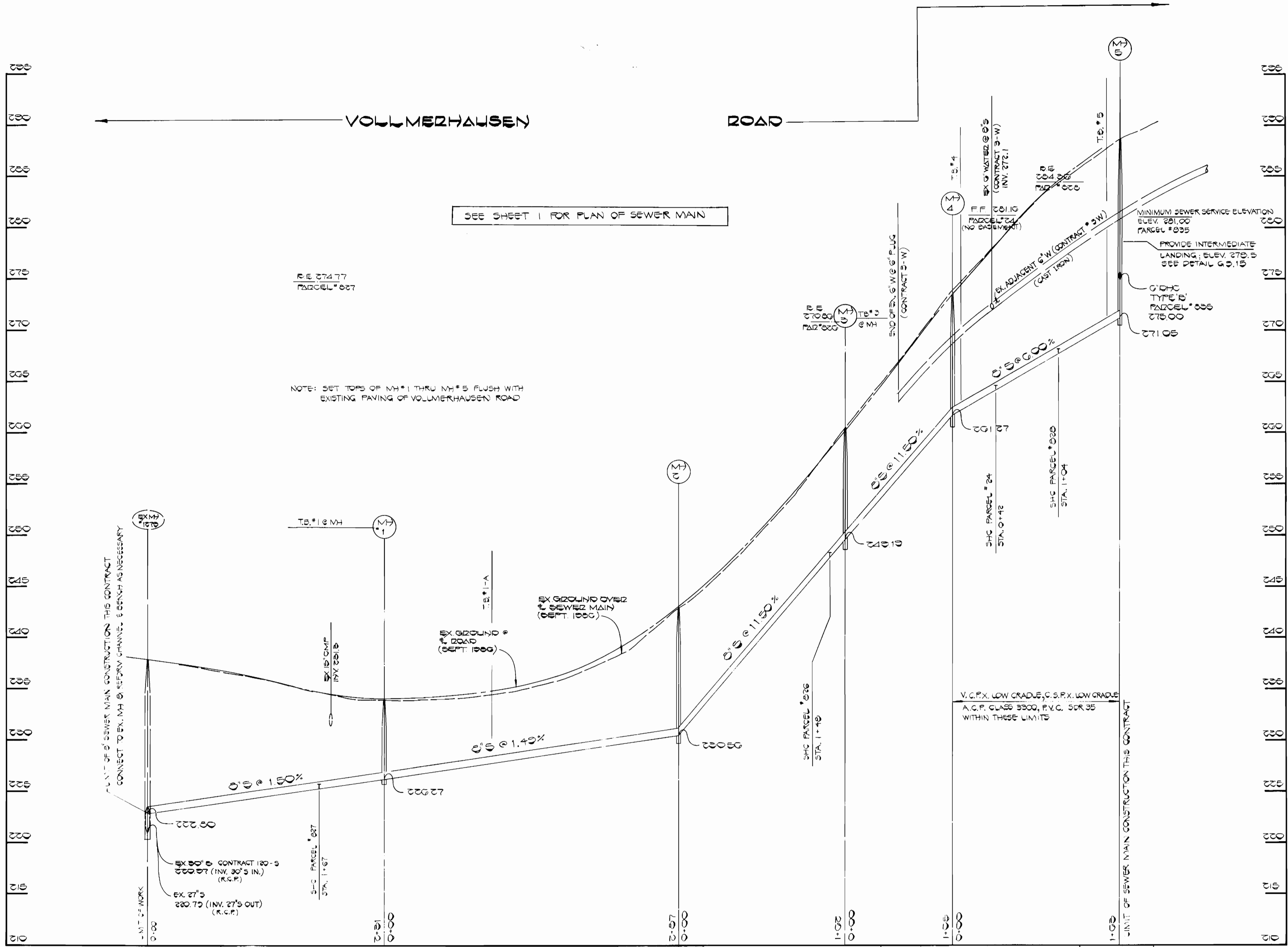
PLAN
SEWER MAIN

600' SCALE MAP NO. 47 BLOCK NO. _____

VOLLMERHAUSEN RD. SEWER MAIN EXTENSION
 CAPITAL PROJECT S-6686
 CONTRACT NO. 20-1563
 SIXTH ELECTION DISTRICT
 HOWARD COUNTY, MARYLAND

SCALE AS SHOWN
 SHEET 1 OF 2

BRUNING 44 132 09150



SEE SHEET 1 FOR PLAN OF SEWER MAIN

RE 07477
PARCEL # 037

NOTE: SET TOPS OF MH #1 THRU MH #5 FLUSH WITH EXISTING PAVING OF VOLLMERHAUSEN ROAD

PROFILE
SCALE: HOR 1"=50'
VERT 1"=5'

DEPARTMENT OF PUBLIC WORKS
HOWARD COUNTY, MARYLAND

1-16-87
1-2-87

1/16/87
12/31/86

FISHER, COLLINS AND CARTER, INC #9757
CONSULTING ENGINEERS AND LAND SURVEYORS
8388 COURT AVENUE
ELLCOTT CITY, MARYLAND 21043

TERRELL A. FISHER DATE



DES: P.W.K.					
DRN: J.O./D.B.S.					
CHK: T.A.F.					
DATE: 12/10/86					
BY: NO.					
REVISION					
DATE					

PROFILE
SEWER MAIN

600 SCALE MAP NO. 47 BLOCK NO.

VOLLMERHAUSEN RD. SEWER MAIN EXTENSION
CAPITAL PROJECT S-6686
CONTRACT NO. 20-1569
SIXTH ELECTION DISTRICT
HOWARD COUNTY, MARYLAND

SCALE AS SHOWN
SHEET 2 OF 2