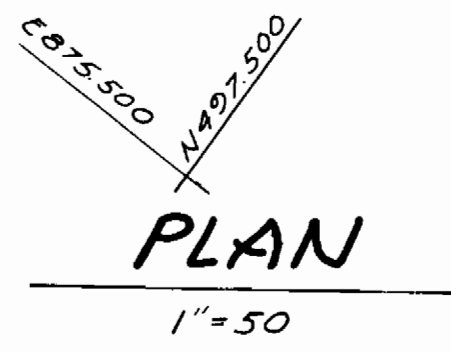


WILLARD W. SHIPMAN & WIFE
LIBER 413, FOLIO 278

SEQUENCE OF CONSTRUCTION

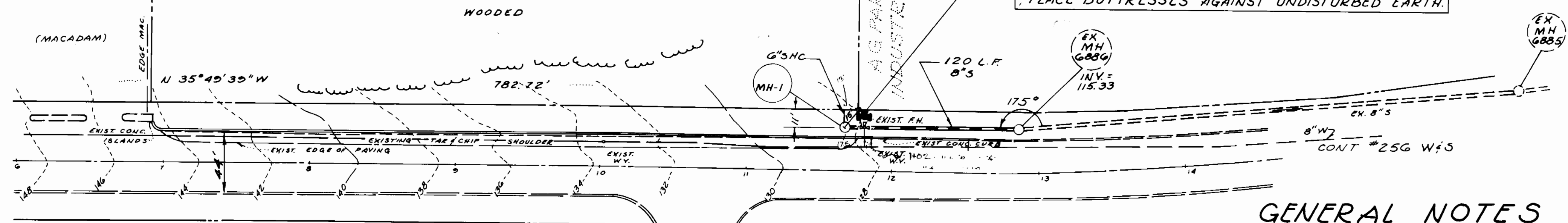
1. CLOSE VALVE TO ISOLATE THE EXISTING FIRE HYDRANT.
2. DISASSEMBLE FIRE HYDRANT AT THE BOOT. INSTALL A SIX FOOT LENGTH OF 6" DIAMETER D.I.P. PIPE. UTILIZE ORIGINAL FIVE FOOT STANDPIPE (BURY LINE = 128.1)
3. INSTALL FIRE HYDRANT PER STANDARD DETAILS FOR STRAPPING (W 2.11) AND BUTTRESSING (W 1.11).
4. REMOVE EXISTING PLUG AND REFORM CHANNEL AS DESIGNED.
5. INSTALL SEWER AS DESIGNED.
6. INSTALL SHC AS DESIGNED.

BENCH MARK #1 "X" CUT IN RIM ELEVATION = 125.33
MANHOLE # G88G
COORDINATE N496,955 E875,411



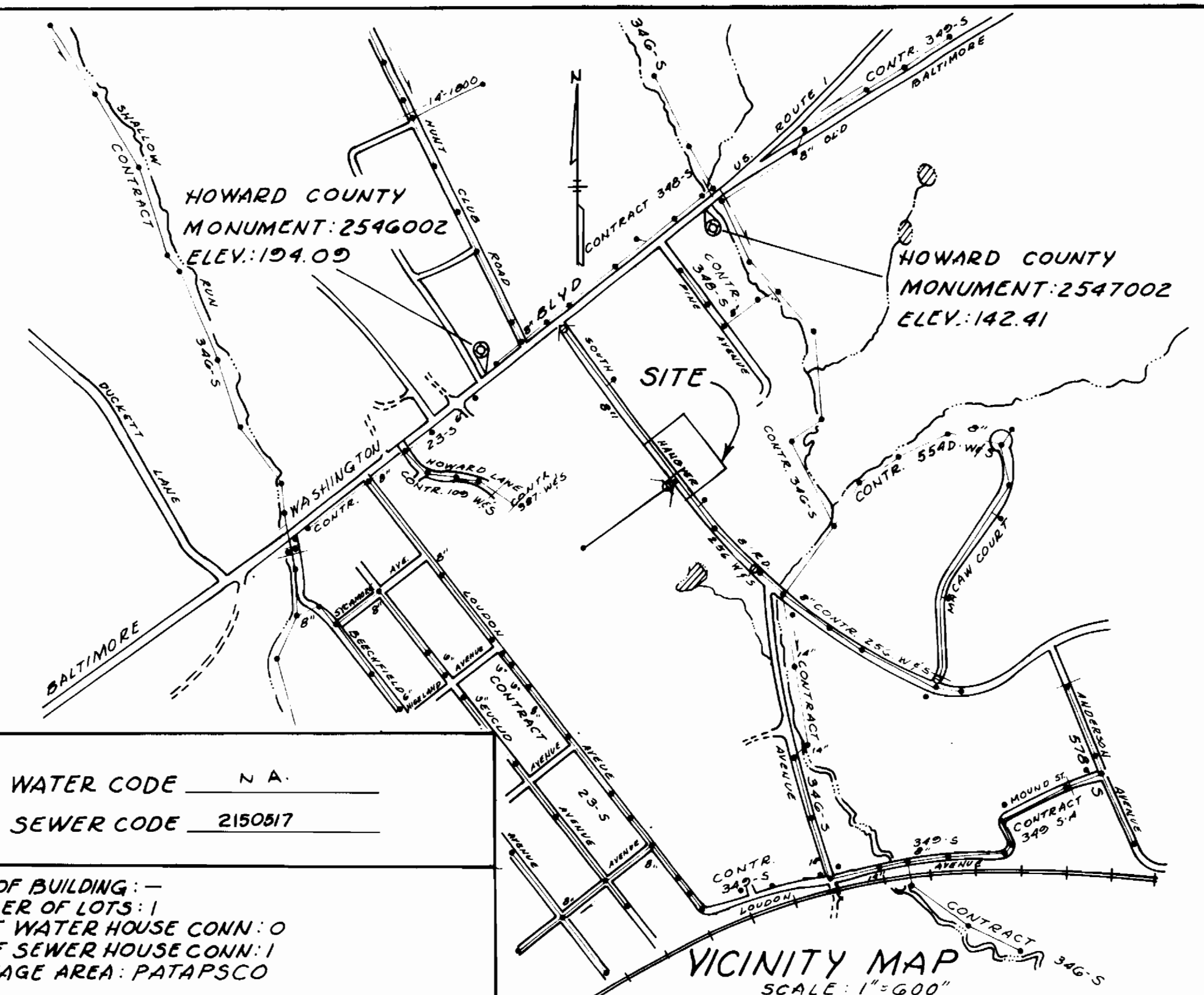
PARCEL "A"
(SERVED UNDER CONTRACT 348-S)

PARCEL "B"
EVELYN SILVER PROP.



WATER CODE N.A.
SEWER CODE 2150817

TYPE OF BUILDING: -
NUMBER OF LOTS: 1
NO. OF WATER HOUSE CONN.: 0
NO. OF SEWER HOUSE CONN.: 1
DRAINAGE AREA: PATAFSCO



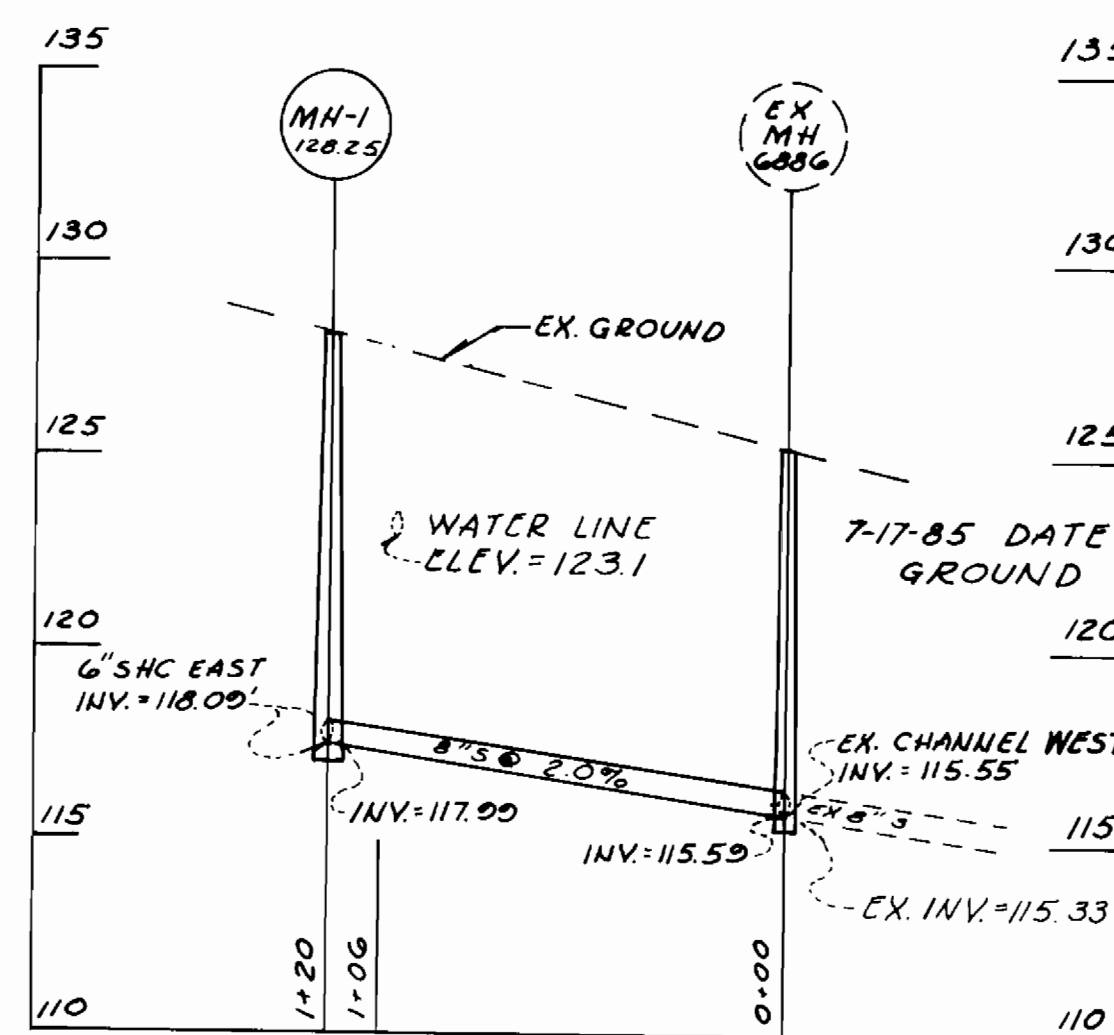
GENERAL NOTES

1. APPROXIMATE LOCATION OF EXISTING MAINS ARE SHOWN. THE CONTRACTOR SHALL TAKE ALL NECESSARY PRECAUTIONS TO PROTECT EXISTING MAINS AND SERVICES AND MAINTAIN UNINTERRUPTED SUPPLY. ANY DAMAGE INCURRED SHALL BE REPAIRED IMMEDIATELY.
2. ALL HORIZONTAL CONTROLS ARE BASED ON MARYLAND STATE COORDINATES
3. ALL VERTICAL CONTROLS ARE BASED ON U.S.G.S. DATUM.
4. ALL PIPE ELEVATION SHOWN ARE INVERT ELEVATIONS.
5. CLEAR ALL UTILITIES BY A MINIMUM OF 6". CLEAR ALL POLES 2'-0" MINIMUM OR TUNNEL AS REQUIRED.
6. FOR ALL STANDARD DETAILS SEE STANDARDS BOUND IN SPECIFICATIONS.
7. CONTRACTOR SHALL LOCATE EXISTING UTILITIES IN ADVANCE OF CONSTRUCTION OPERATIONS IN THE VICINITY OF PROPOSED UTILITIES.
8. CONTRACTORS SHALL NOTIFY THE FOLLOWING UTILITIES OR AGENCIES AT LEAST FIVE (5) DAYS STARTING WORK SHOWN ON THESE PLANS:
 - STATE HIGHWAY ADMINISTRATION - 531-5533
 - BALTIMORE GAS AND ELECTRIC COMPANY - UNDERGROUND ELECTRIC DISTRIBUTION ENGINEERING - "DAMAGE CONTROL" - 234-5621
 - BALTIMORE GAS AND ELECTRIC COMPANY - UNDERGROUND GAS DISTRIBUTION AND MISS UTILITY - 1-559-0100
 - CHESAPEAKE AND POTOMAC TELEPHONE COMPANY - 725-9976
 - AMERICAN TELEPHONE AND TELEGRAPH - CABLE LOCATION DIVISION - 301-393-3553
 - COLONIAL PIPELINE COMPANY - 781-9641
9. TREES ARE TO BE PROTECTED FROM DAMAGE TO MAXIMUM EXTENT. TREES LOCATED WITHIN THE CONSTRUCTION STRIPS ARE NOT TO BE REMOVED OR DAMAGED BY THE CONTRACTOR.
10. CONTRACTOR SHALL REMOVE TREES, STUMPS AND ROOTS ALONG LINE OF EXCAVATION AS DIRECTED BY THE ENGINEER. PAYMENT FOR SUCH REMOVAL SHALL BE INCLUDED IN THE UNIT PRICE BID FOR EXCAVATION AND BACKFILL FOR WATER AND SEWER MAINS.
11. PLACE REGULATION "MEN WORKING" AND WARNING SIGNS AS REQUIRED TO COMPLY WITH MARYLAND STATE HIGHWAY ADMINISTRATION MANUAL OF TRAFFIC CONTROL FOR HIGHWAY CONSTRUCTION AND MAINTENANCE OPERATIONS.

SEWER NOTES

1. ALL SEWER MAINS SHALL BE CSPX, RCSP, VCPX, ACP CLASS 2400 OR PVC. UNLESS OTHERWISE NOTED.
2. THE CONTRACTOR SHALL PROVIDE A JOINT IN ALL SEWER MAINS WITHIN 2'-0" OF EXTERIOR MANHOLE WALL.
3. ALL MANHOLES SHALL BE 4'-0" INSIDE DIAMETER UNLESS OTHERWISE NOTED.

QUANTITIES			
ITEM	EST'D	ASBUILT	SUPPLIER
8" SEWER	120'	120'	Howards
MANHOLES	1	1	Howards
6" SHC	10'	10'	Howards
6" D.I.P.	6'	6'	Howards



SEWER MAIN PROFILE

SCALE: HOR 1" = 50'
VER 1" = 5'

John E. ...
8-27-86

SEDIMENT CONTROL MEASURES FOR THIS CONTRACT WILL BE IMPLEMENTED IN ACCORDANCE WITH SECTION 29 OF HOWARD COUNTY DESIGN MANUAL & STANDARDS & SPECIFICATIONS FOR SOIL EROSION AND SEDIMENT CONTROL IN DEVELOPING AREAS, + F-86-57

REVIEWED FOR HOWARD S.C.D. AND MEETS TECHNICAL REQUIREMENTS

James M. Helms 10/9/86
DATE

THIS DEVELOPMENT PLAN IS APPROVED FOR SOIL EROSION AND SEDIMENT CONTROL BY THE HOWARD SOIL CONSERVATION DISTRICT

Stephen P. ... 10/9/86
DATE

DEPARTMENT OF PUBLIC WORKS
HOWARD COUNTY, MARYLAND

John N. ... 12-15-86
DATE

W. ... 8-15-86
DATE

KIDDE CONSULTANTS INC.
ENGINEERS, PLANNERS & SURVEYORS
SUITE 100, 1100 WEST STREET
LAUREL MD. 20707
(301) 953-1821
(301) 792-8086

CONTRACT NO.
14-1522-D

DES: M.D.	
DRN: H.L.	
CHK: DCW	
DATE: 7-29-86	
BY: NO.	
REVISION	
DATE	

**PLAN & PROFILE
SEWER MAIN**

600 SCALE MAP NO. 36 BLOCK NO.

CONTRACT NO. 14-1522-D
SEWER EXTENSION
PARCEL B, SILVER PROPERTY
ELECTION DISTRICT 1

SCALE AS SHOWN
SHEET 1 OF 1

AS-BUILT 10/1/88