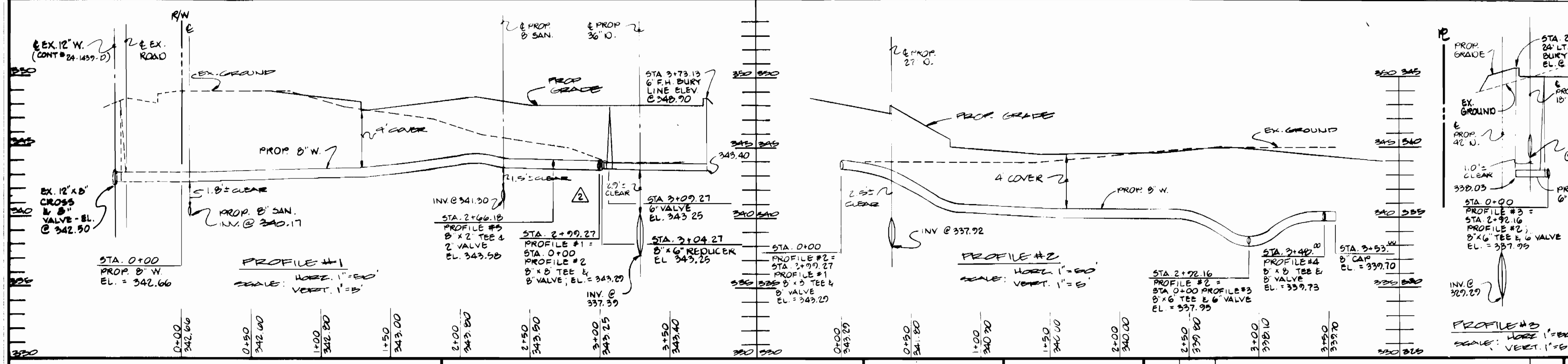
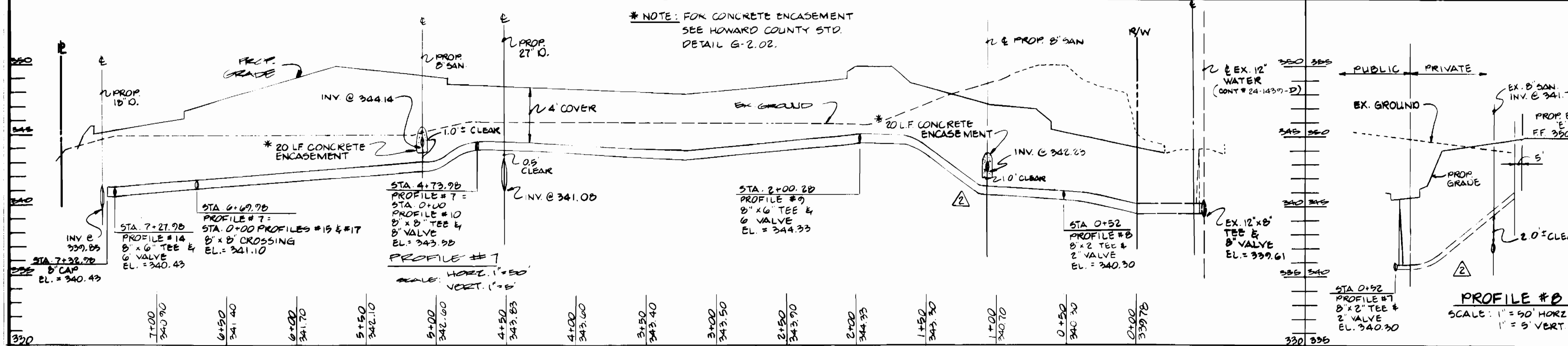


TYPE OF BUILDINGS: 6 OFFICE/WAREHOUSE
 NUMBER OF LOTS: 1
 NUMBER OF WATER H.C.'S: 6
 DRAINAGE AREA: LITTLE PATUXENT

BENCH MARKS:
 W.R. & A.B.M. #3: ELEV. 329.26
 TOP BOLT AT TOP OF OLD LIGHT POST FOOT 149' OF E. COLUMBIA GATEWAY DRIVE STA. 11+50
 W.R. & A.B.M. #4: ELEV. 330.10
 R.R. SPIKE IN BASE OF 14" OAK 93' RIGHT OF E. COLUMBIA GATEWAY DRIVE STA. 24+50.

NOTES:
 1. APPROXIMATE LOCATION OF EXISTING MAINS ARE SHOWN. THE CONTRACTOR SHALL TAKE ALL NECESSARY PRECAUTIONS TO PROTECT EXISTING MAINS AND SERVICES AND MAINTAIN UNINTERRUPTED SUPPLY. ANY DAMAGE INCURRED SHALL BE REPAIRED IMMEDIATELY TO THE SATISFACTION OF THE ENGINEER AT THE CONTRACTOR'S EXPENSE.
 2. ALL HORIZONTAL CURVES ARE BASED ON MARYLAND STATE ASSOCIATES.
 3. ALL PIPE ELEVATIONS SHOWN ARE INVERT ELEVATIONS.
 4. CLEAR ALL UTILITIES EXCEPT A MINIMUM 6" CLEAR ALL PIPES BY 2'0" MINIMUM OF TUNNEL AS PER ANY CONTRACT INCURRED TO THE CONTRACTOR FOR TUNNELING OR BRACING AT PIPES, SHALL BE INCLUDED IN THE UNIT PRICE BID FOR CONSTRUCTION OF THE MAIN.
 5. FOR DETAILS NOT SHOWN ON DRAWINGS, AND FOR MATERIALS AND CONSTRUCTION METHODS USE HOWARD COUNTY DESIGN MANUAL VOLUME III, STANDARD SPECIFICATIONS AND DETAILS FOR CONSTRUCTION, THE CONTRACTOR SHALL HAVE A COPY OF VOLUME III ON THE JOB.
 6. CONTRACTOR SHALL LOCATE EXISTING UTILITIES A MINIMUM OF TWO WEEKS IN ADVANCE OF CONSTRUCTION OPERATIONS IN THE VICINITY OF PROPOSED MAINS AT HIS OWN EXPENSE.
 7. CONTRACTOR SHALL NOTIFY THE FOLLOWING UTILITIES AT LEAST FIVE WORKING DAYS BEFORE STARTING WORK ON THESE MAINS: STATE HIGHWAY ADMINISTRATION (ELECTRIC, GAS, WATER, GAS & ELECTRIC CO. - CONTACT SERVICES DIV. - 28600), BALDWIN GAS & ELECT. TRUCKS (ELECTRIC CO. - 28600), BALDWIN GAS & ELECT. TRUCKS (ELECTRIC CO. - 28600), BALDWIN GAS & ELECT. TRUCKS (ELECTRIC CO. - 28600), BALDWIN GAS & ELECT. TRUCKS (ELECTRIC CO. - 28600).
 8. TREES & SHRUBS ARE TO BE PROTECTED FROM DAMAGE TO MAXIMUM EXTENT. TREES AND SHRUBS LOCATED WITHIN THE CONSTRUCTION SITE ARE TO BE REMOVED OR DAMAGED BY THE CONTRACTOR. EACH REMOVAL SHALL BE INCLUDED IN THE UNIT PRICE BID FOR CONSTRUCTION OF THE MAIN.
 9. ALL WATER MAINS TO BE 24" UNLESS OTHERWISE NOTED.
 10. ALL WATER MAINS TO HAVE A MIN. OF 36" COVER UNLESS OTHERWISE NOTED.
 11. VALVES ADJACENT TO TEES SHALL BE STRAPPED TO TEES.
 12. ALL FITTINGS SHALL BE BUTTERED OR ALUMINUM WITH CONCRETE IN ACCORDANCE WITH THE STANDARD DETAILS OTHERWISE PROVIDED ON THE DRAWINGS.
 13. FIRE HYDRANTS SHALL BE SET TO THE BURY LINE ELEVATIONS SHOWN ON THE DRAWINGS. ALL FIRE HYDRANTS TO BE SET 2' (THREE) FEET BEHIND PROPOSED FACE OF CURB UNLESS OTHERWISE NOTED. OTHERWISE ALL FIRE HYDRANTS SHALL BE STRAPPED & BUTTERED WITH CONCRETE IN ACCORDANCE WITH SECTION 1002 OF THE STANDARD SPEC.
 14. THE CONTRACTOR SHALL NOT OPERATE ANY WATERMAIN VALVES ON THE EXISTING WATER SYSTEMS.
 15. ALL WATER MAINS COLLECTIONS, INVERTS, WATER SETTING UNLESS OTHERWISE SHOWN.
 16. MINIMUM GROUND RADIUS WILL BE AS SPECIFIED BY PIPE MANUFACTURER.
 17. PLACE REGULATORY "NEW WORKING" & "WARNING" SIGNS AS REQUIRED TO COMPLY WITH MD. STATE HIGHWAY ADMINISTRATION MANUAL FOR HIGHWAY CONSTRUCTION AND MAINTENANCE OPERATIONS.



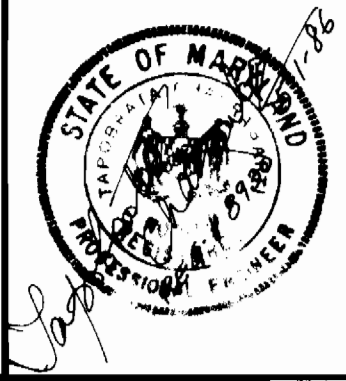
SEDIMENT CONTROL MEASURES FOR THIS CONTRACT WILL BE IMPLEMENTED IN ACCORDANCE WITH ARTICLE 15 OF THE STD. SPEC. & S.D.P. # 20 - 231

REVIEWED FOR HOWARD SOIL CONSERVATION DISTRICT AND MEETS TECHNICAL REQUIREMENTS.

APPROVED FOR HOWARD SOIL CONSERVATION DISTRICT

DEPARTMENT OF PUBLIC WORKS
 HOWARD CO. MARYLAND
 Director of Public Works, Date
 Chief, Bureau of Utilities, Date
 Chief, Land Development Div., Date

GEORGE W. STEPHENS JR. AND ASSOCIATES INC.
 303 ALLEGHENY AVENUE
 TOWSON MARYLAND 21284
 410-2100

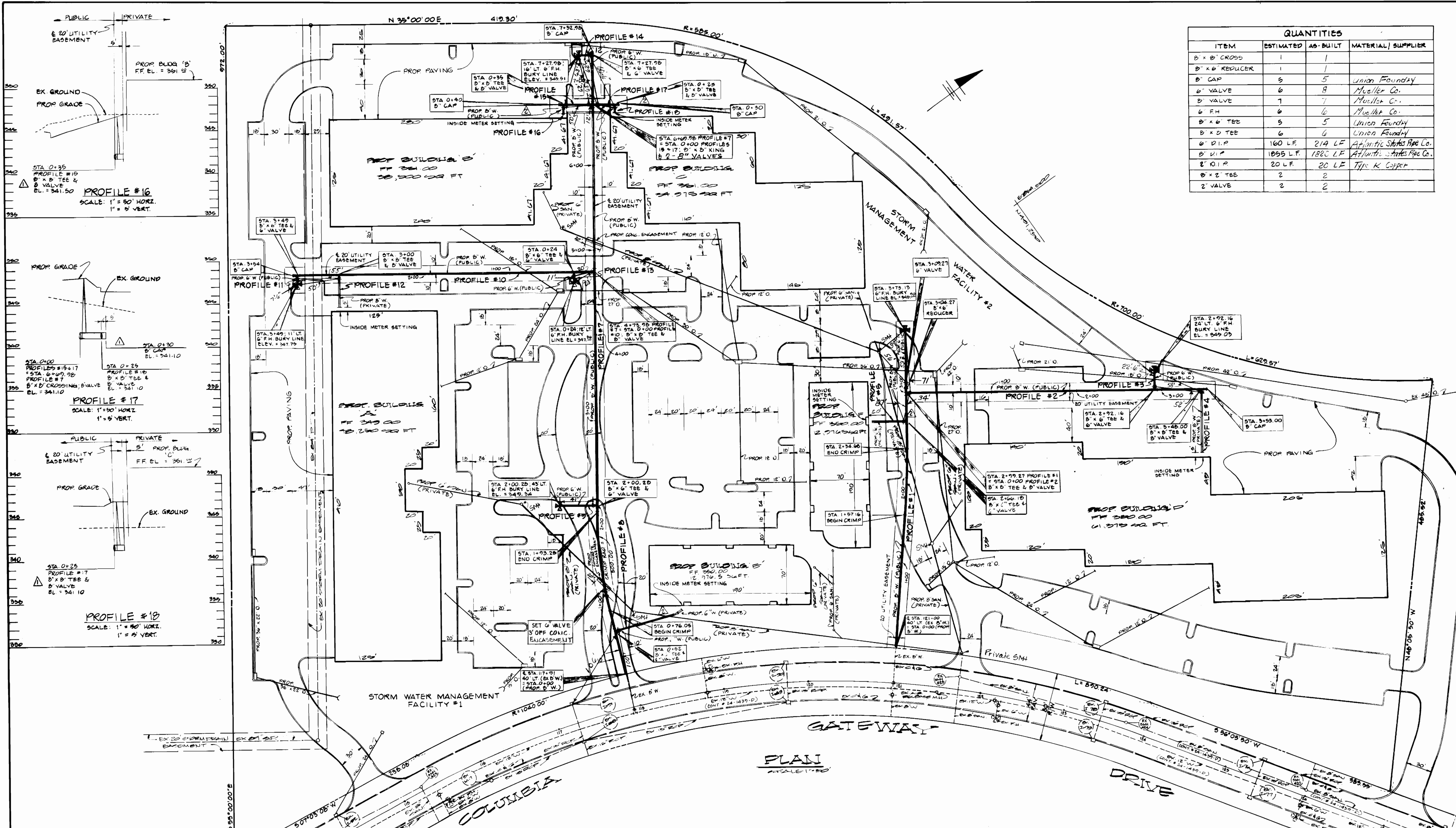


DESIGNED	BY	DATE
K.L.B.	K.L.B.	9/18/66
DRAWN	K.L.B.	2/21/67
CHECKED	T.G.	

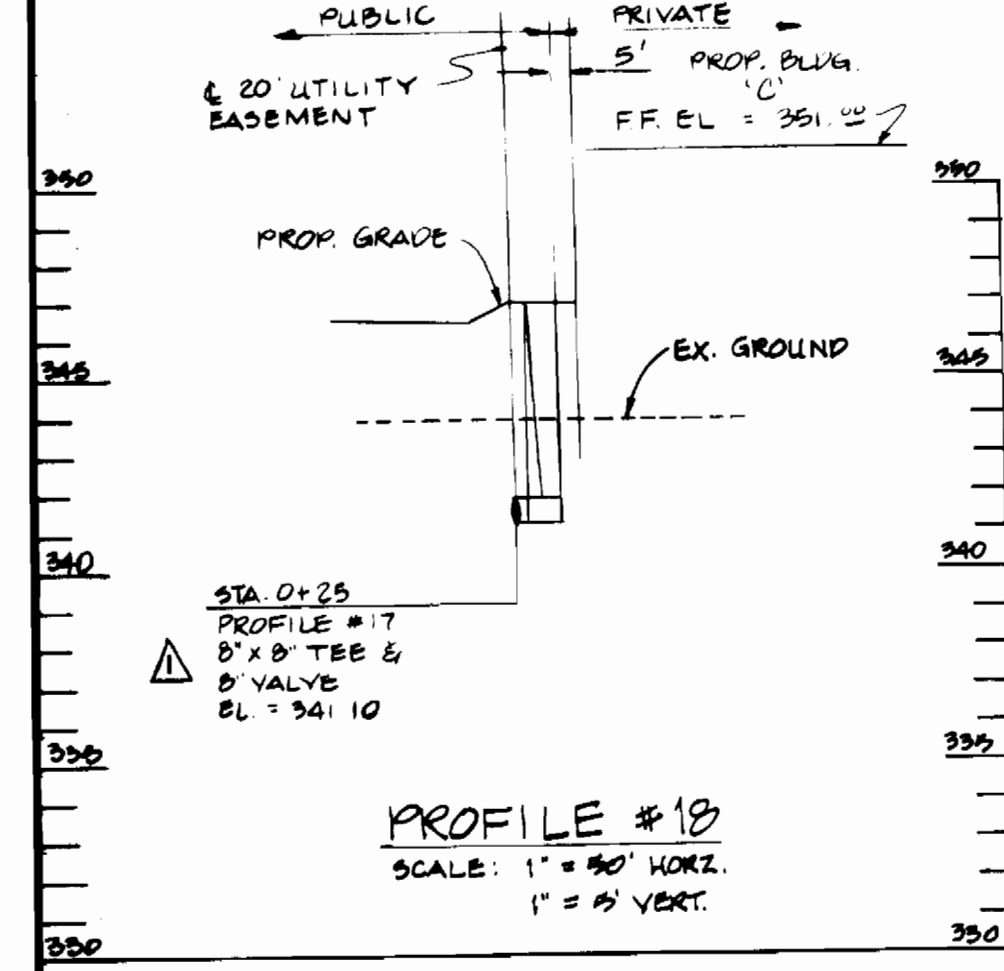
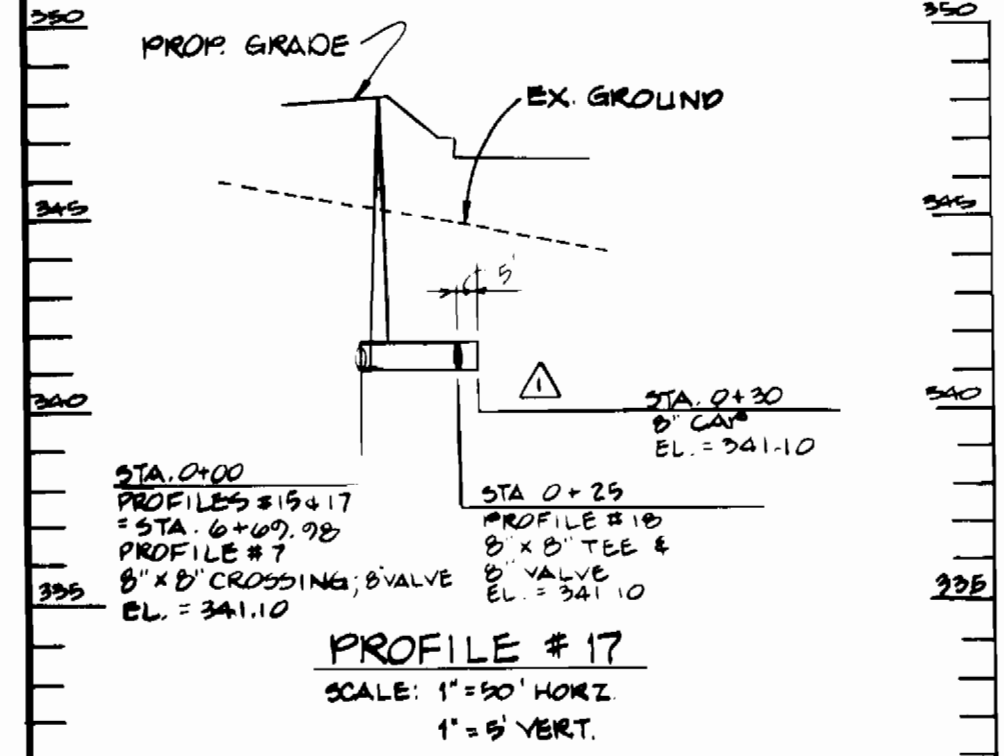
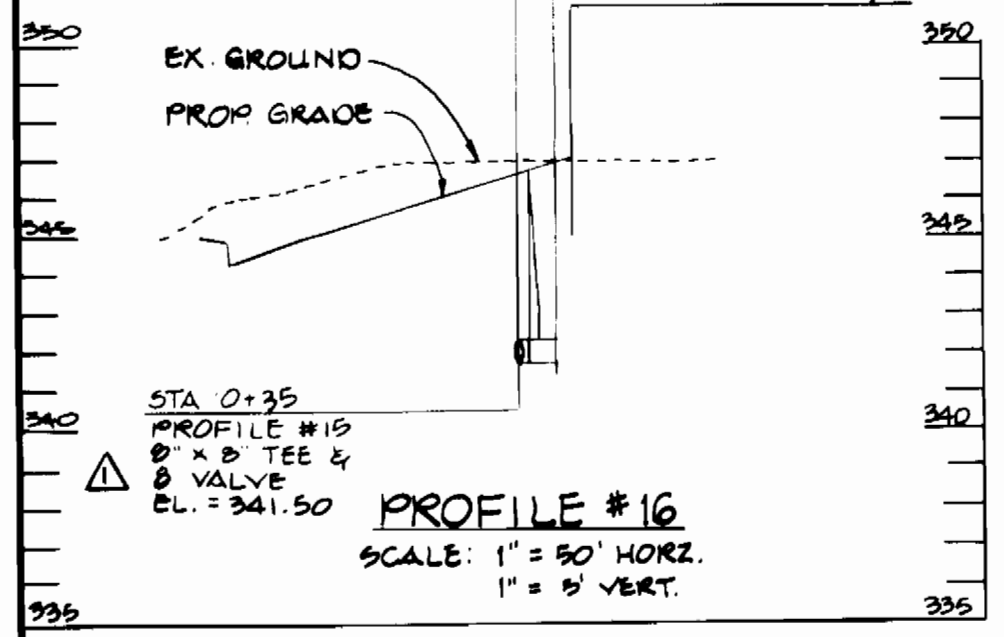
REVISIONS	DATE
Revise 8" x 6" tees to 8" x 8" tees	9/18/66
Revise route connections to Bldgs. D.C.D.E.+F	2/21/67

PLAN FOR PROPOSED WATER MAINS CONTRACT NO. 44-1913-0
 600' SCALE MAP No. 42 & 43 BLOCK No. 1 & 6

COLUMBIA GATEWAY PARCEL J
 HOWARD CO. MARYLAND
 MAY 1, 1966
 SHEET 1 OF 2



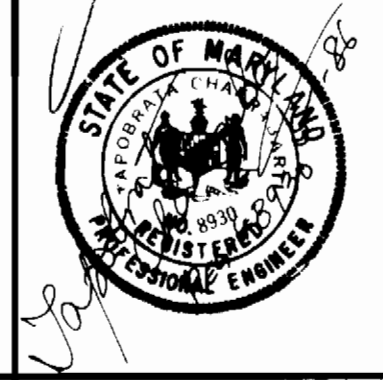
QUANTITIES			
ITEM	ESTIMATED	AS-BUILT	MATERIAL SUPPLIER
8" x 8" CROSS	1	1	
8" x 8" REDUCER	1	1	
8" CAP	5	5	Union Foundry
6" VALVE	6	8	Muehler Co.
8" VALVE	7	7	Muehler Co.
6" F.H.	6	6	Muehler Co.
8" x 6" TEE	5	5	Union Foundry
8" x 8" TEE	6	6	Union Foundry
6" D.I.P.	160 LF.	214 LF	Atlantic States Pipe Co.
8" D.I.P.	1055 LF.	1820 LF	Atlantic States Pipe Co.
2" O.I.P.	20 LF.	20 LF	Type K Copper
2" VALVE	2	2	



REVIEWED FOR HOWARD SOIL CONSERVATION DISTRICT AND MEETS TECHNICAL REQUIREMENTS.

THE DEVELOPMENT PLAN IS APPROVED FOR SOIL EROSION AND SEDIMENT CONTROL BY THE HOWARD SOIL CONSERVATION DISTRICT APPROVED

SEDIMENT CONTROL MEASURES FOR THIS CONTRACT WILL BE IMPLEMENTED IN ACCORDANCE WITH ARTICLE 15 OF THE STD. SPEC. & S.D.P. # 80-231



DESIGNED	BY	NO.	REVISIONS	DATE
K.L.B.	K.L.B.		Revise 8" x 6" tees to 2" x 8" tees	7/6/86
J.B./K.B.	K.L.B.		Revise house connections to Bldgs B, C, D, E + F	2/24/87
TC				

PLANNED
STORM WATER MAIN
CONTRACT NO. 44-1913-D
600' SCALE MAP NO. 42 & 43 BLOCK NO. 1 & 6

DEPARTMENT OF PUBLIC WORKS
HOWARD CO. MARYLAND
George W. Stephens Jr. and Associates Inc.
303 ALLEGHENY AVENUE
TOWSON MARYLAND 21286
202-810-0100

COLUMBIA GATEWAY
PARCEL 'S'
HOWARD CO MARYLAND
MAY 1, 1986

SCALE AS SHOWN
SHEET 2 OF 2