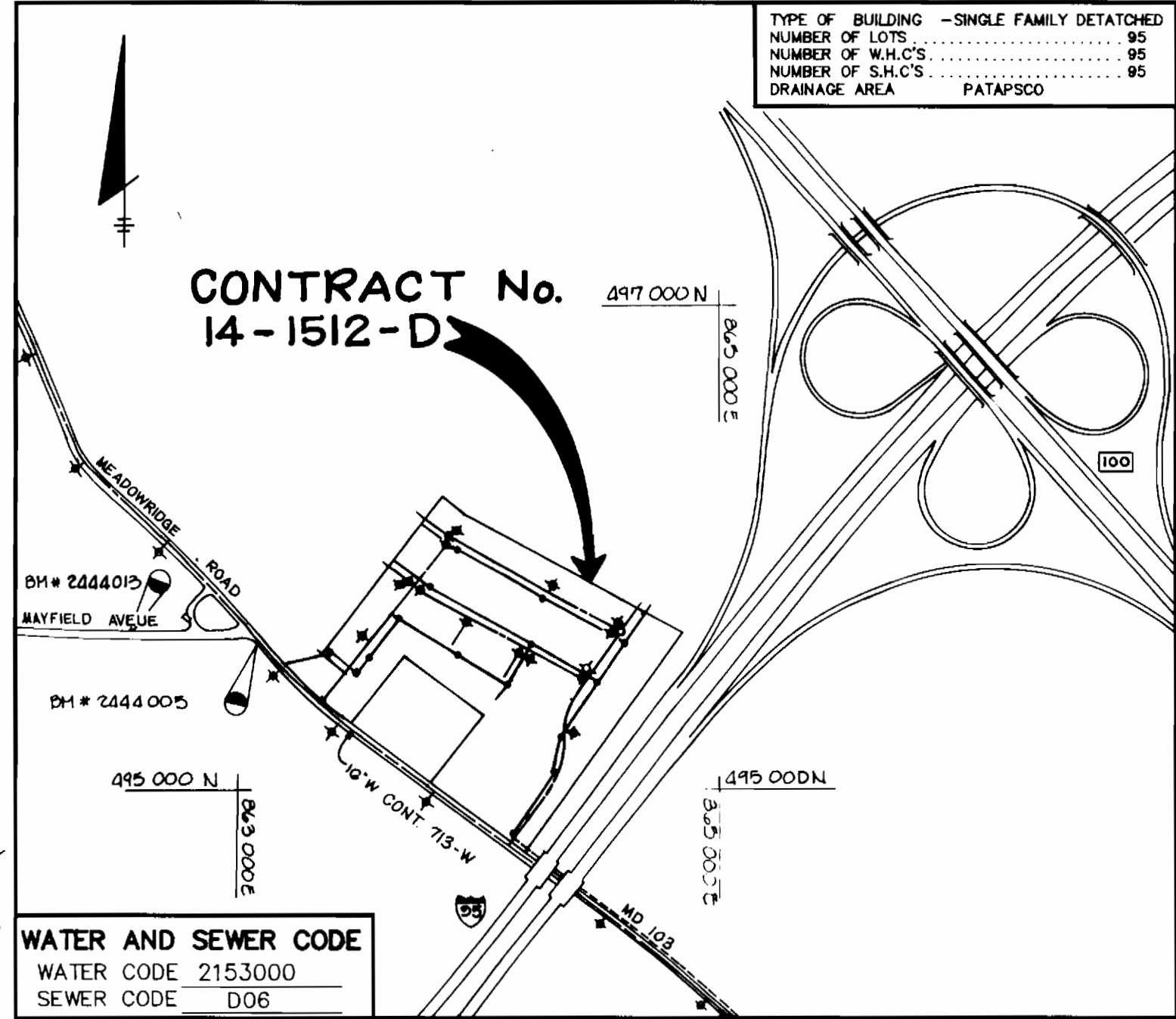


NOTES FOR ABANDONMENT OR RELOCATION OF HOUSE CONNECTIONS

- WATER CONNECTIONS:**
1. ALL WATER VAULTS SHALL BE RELOCATED TO THE PROPERTY LINE AS PER COUNTY CODE.
 2. WHEN ABANDONING A WATER HOUSE CONNECTION WHERE A DOUBLE HOUSE CONNECTION SERVES ONE BUILDABLE LOT AND ONE OPEN SPACE LOT THE CONNECTION TO THE OPEN SPACE LOT WILL NOT RECEIVE A METER.
 3. WHEN ABANDONING A SINGLE WATER HOUSE CONNECTION, ABANDON THE HOUSE CONNECTION BACK TO THE WATER MAIN AND REPAIR PAVING IN ACCORDANCE WITH COUNTY SPECIFICATIONS. "REMOVE CONNECTION STOP AND PLUG THE MAIN."

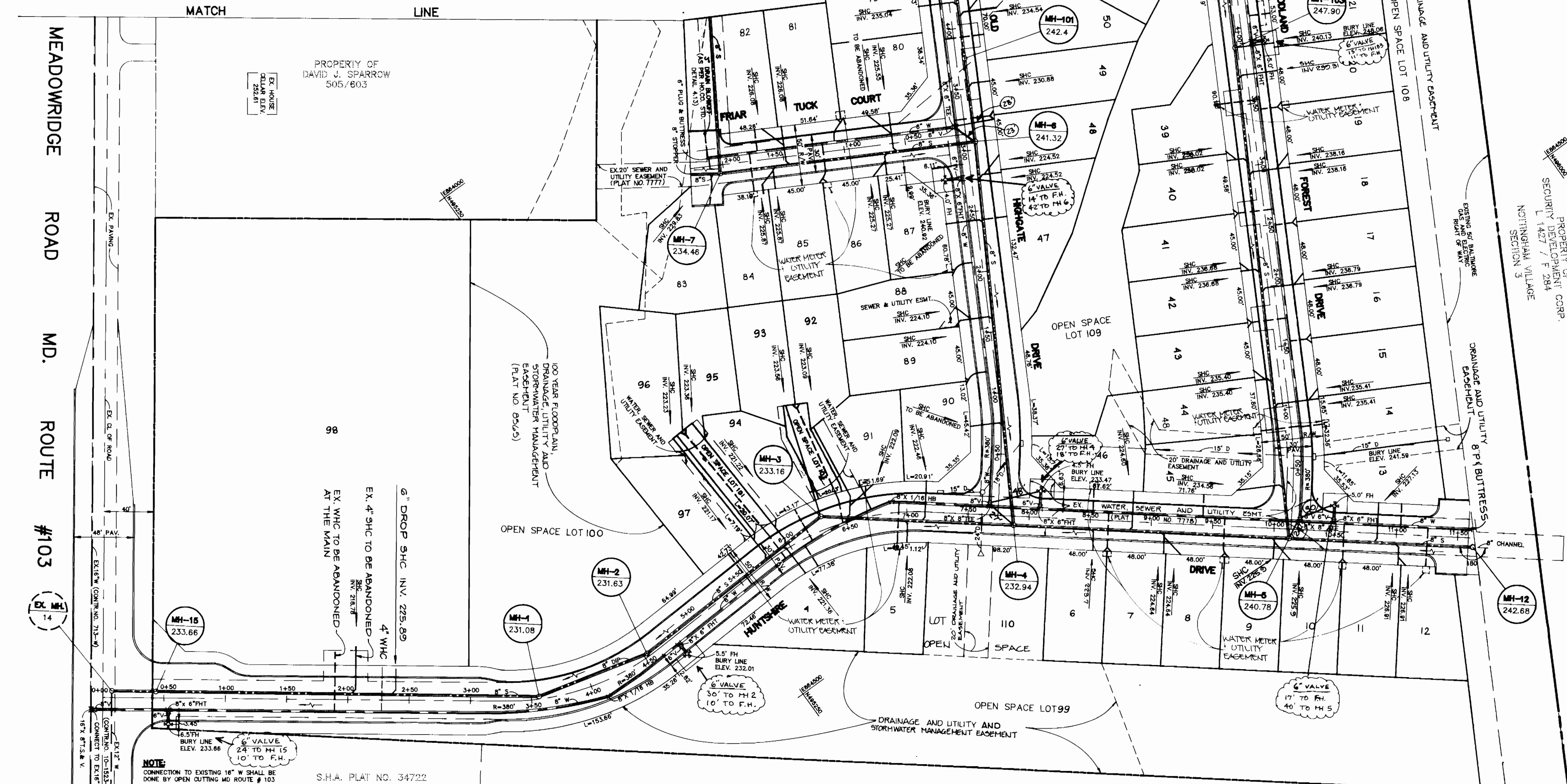
- SEWER HOUSE CONNECTIONS:**
1. WHERE A TWIN SEWER CONNECTION IS INSTALLED AND ONE CONNECTION SERVES A BUILDABLE LOT AND THE OTHER AN OPEN SPACE LOT, ABANDON THE OPEN SPACE LOT CONNECTION AT THE "Y".
 2. WHEN A SINGLE SEWER HOUSE CONNECTION IS TO BE ABANDONED, REMOVE THE SEWER HOUSE CONNECTION BACK TO THE SEWER MAIN AND PLUG SEWER MAIN AT W.P.E. REPAIR PAVING IN ACCORDANCE WITH COUNTY SPECIFICATIONS.
 3. AT THE TIME THE BUILDER CONNECTS TO THE SEWER HOUSE CONNECTION THEY SHALL INSTALL A CLEANOUT AT THE PROPERTY LINE AS PER HOWARD COUNTY STD S-222. DEVELOPER SHALL INSTALL STAND PIPES TO WITHIN 8' FEET OF FINISHED GRADE PER STANDARD DETAIL 6.2.22.



WATER AND SEWER CODE
 WATER CODE 2153000
 SEWER CODE D06

GENERAL NOTES

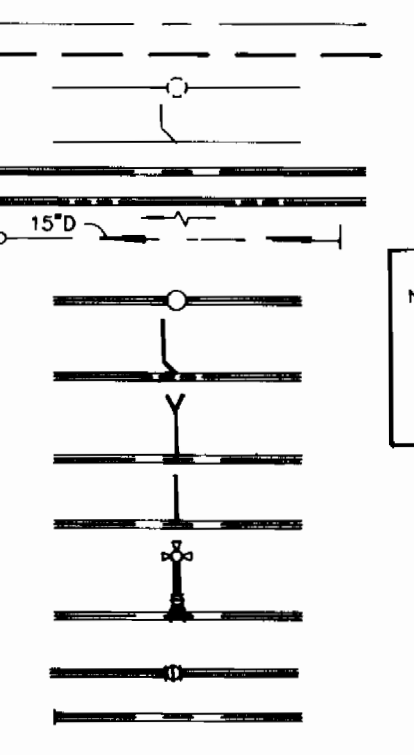
1. APPROXIMATE LOCATION OF EXISTING MAINS ARE SHOWN. THE CONTRACTOR SHALL TAKE ALL NECESSARY PRECAUTIONS TO PROTECT EXISTING MAINS AND SERVICES AND MAINTAIN UNINTERRUPTED SUPPLY. ANY DAMAGE INCURRED SHALL BE REPAIRED IMMEDIATELY TO THE SATISFACTION OF THE ENGINEER AT THE CONTRACTOR'S EXPENSE.
2. ALL HORIZONTAL CONTROLS ARE BASED ON MARYLAND STATE COORDINATES.
3. ALL VERTICAL CONTROLS ARE BASED ON U.S.G.C. DATA.
4. ALL PIPE ELEVATIONS SHOWN ARE INVERT ELEVATIONS.
5. CLEAR ALL UTILITIES BY A MINIMUM OF 6". CLEAR ALL POLES BY 2'-0" MINIMUM OR TUNNEL AS REQUIRED. THE OWNER HAS CONTACTED THE UTILITY COMPANY AND HAS MADE ARRANGEMENTS FOR BRACING OF POLES SHOWN ON THE DRAWINGS. IN THE EVENT THE CONTRACTOR'S WORK REQUIRES ADDITIONAL BRACING OF POLES, ANY COST INCURRED BY THE OWNER FOR THE BRACING OF ADDITIONAL POLES OR DAMAGES SHALL BE DEDUCTED FROM MONEY OWED TO THE CONTRACTOR. THE CONTRACTOR SHALL COORDINATE WITH THE UTILITY COMPANY TO SCHEDULE THE BRACING OF THE POLES.
6. FOR DETAILS NOT SHOWN ON THE DRAWINGS, AND FOR MATERIALS AND CONSTRUCTION METHODS, USE HOWARD COUNTY DESIGN MANUAL VOLUME IV, STANDARD SPECIFICATIONS AND DETAILS FOR CONSTRUCTION. THE CONTRACTOR SHALL HAVE A COPY OF VOLUME IV ON THE JOB.
7. WHERE TEST PITS HAVE BEEN MADE ON EXISTING UTILITIES, THEY ARE NOTED BY THE SYMBOL AT THE LOCATION OF THE TEST PIT. A NOTE OR NOTES CONTAINING THE RESULTS OF THE TEST PIT OR PITS IS INCLUDED ON THE DRAWINGS. EXISTING UTILITIES IN THE VICINITY OF THE PROPOSED WORK FOR WHICH TEST PITS HAVE BEEN DUG SHALL BE LOCATED BY THE CONTRACTOR TWO WEEKS IN ADVANCE OF CONSTRUCTION OPERATIONS AT THE CONTRACTOR'S EXPENSE.
8. CONTRACTOR SHALL NOTIFY THE FOLLOWING UTILITIES OR AGENCIES AT LEAST FIVE WORKING DAYS BEFORE STARTING WORK SHOWN ON THESE PLANS:
 C&P TELEPHONE.....1-800-257-7777
 STATE HIGHWAY ADMINISTRATION.....531-5533
 BALTIMORE GAS & ELECTRIC CO. CONTRACTOR SERVICE.....850-4620
 BALTIMORE GAS & ELECTRIC CO. UNDERGROUND DAMAGE CONTROL.....859-9004
 BALTIMORE GAS & ELECTRIC CO. TROUBLE SHOOTING.....298-9001
 MISS UTILITY.....1-800-257-7777
 COLONIAL PIPELINE CO.....795-1390
 BUREAU OF UTILITIES, HOWARD COUNTY DEPARTMENT OF PUBLIC WORKS.....313-4900
9. TREES ARE TO BE PROTECTED FROM DAMAGE TO MAXIMUM EXTENT. TREES LOCATED WITHIN THE CONSTRUCTION STRIP ARE NOT TO BE REMOVED OR DAMAGED BY THE CONTRACTOR. CONTRACTOR SHALL REMOVE TREES, STUMPS AND ROOTS ALONG LINE OF EXCAVATION AS DIRECTED BY THE ENGINEER. PAYMENT FOR SUCH REMOVAL SHALL BE INCLUDED IN THE UNIT PRICE BID FOR EXCAVATION AND BACKFILL.
10. PLACE REGULATION "MEN WORKING" AND WARNING SIGNS AS REQUIRED TO COMPLY WITH MARYLAND STATE HIGHWAY ADMINISTRATION MANUAL OF TRAFFIC CONTROL FOR HIGHWAY MAINTENANCE OPERATIONS.
11. ALL WATER MAINS SHALL BE D.I.P. (CLASS 52) UNLESS OTHERWISE NOTED.
12. TOP OF ALL WATER MAINS TO HAVE A MINIMUM OF 3'-6" COVER UNLESS OTHERWISE NOTED.
13. VALVES ADJACENT TO TREES SHALL BE STRAPPED TO TREES.
14. BURY LINE ELEVATIONS ON FIRE HYDRANTS SHALL BE SET TO THE ELEVATIONS ON THE DRAWINGS. ALL FIRE HYDRANTS SHALL BE STRAPPED AND BUTRESSED WITH CONCRETE IN ACCORDANCE WITH STANDARD DETAILS. SOIL AROUND THE FIRE HYDRANT TO BE COMPACTED IN ACCORDANCE WITH SECTIONS 1003 AND 1008 OF THE GENERAL REQUIREMENTS FOR WATER AND SEWER.
15. ALL WATER HOUSE CONNECTIONS SHALL BE FOR AN INSIDE METER SETTING.
16. THE CONTRACTOR SHALL NOT OPERATE ANY WATER MAIN VALVES ON THE EXISTING SYSTEM.
17. ALL D.I.P. FITTINGS SHALL BE IN ACCORDANCE WITH A.W.W.A. SPEC. C-153 DUCTILE IRON COMPACT FITTINGS 3"-12" FOR WATER AND OTHER LIQUIDS.
18. THE SERVICE CLAMPS ARE TO HAVE STAINLESS STEEL STRAPS.
19. ALL SEWER MAINS SHALL BE C.S.P.X., V.C.P.X., OR PVC UNLESS OTHERWISE NOTED.
20. THE CONTRACTOR SHALL PROVIDE A JOINT IN ALL SEWER MAINS WITHIN 2'-0" OF EXTERIOR MANHOLE WALL.
21. ALL MANHOLES SHALL BE 4'-0" INSIDE DIAMETER UNLESS OTHERWISE NOTED.
22. MANHOLES SHOWN WITH 12" AND 16" WALLS ARE BRICK MANHOLES ONLY.
23. MANHOLES UNWATERED W.T. IN PLAN AND PROFILE SHALL HAVE WATERTIGHT FRAME AND COVERS, STANDARD DETAIL 65.52 VOLUME IV WHERE WATERTIGHT MANHOLE IS USED, SET TOP OF FRAME 1'-8" ABOVE FINISHED GRADE.
24. HOUSE (S) WITH SYMBOL "C.N.S." INDICATES CELLAR CANNOT BE SERVED.
25. ALL WATER HOUSE CONNECTIONS SHALL HAVE A MINIMUM VERTICAL CLEARANCE OF 12" ABOVE ALL SANITARY SEWER CROSSINGS.
26. ALL SANITARY SEWER CONNECTIONS SHALL HAVE A MINIMUM VERTICAL CLEARANCE OF 12" BELOW ALL WATER MAIN CROSSINGS.
27. PROFILE STATIONS SHALL BE ADJUSTED AS NECESSARY TO CONFORM TO PLAN DIMENSIONS.
28. NO PIPE SHALL BE LAID UNTIL LINES OF EXCAVATION HAVE BEEN BROUGHT TO SUBGRADE.
29. CONTRACTOR SHALL TEST PIT TO VERIFY THE LOCATION AND ELEVATION OF THE EXISTING 8" WATER MAIN.



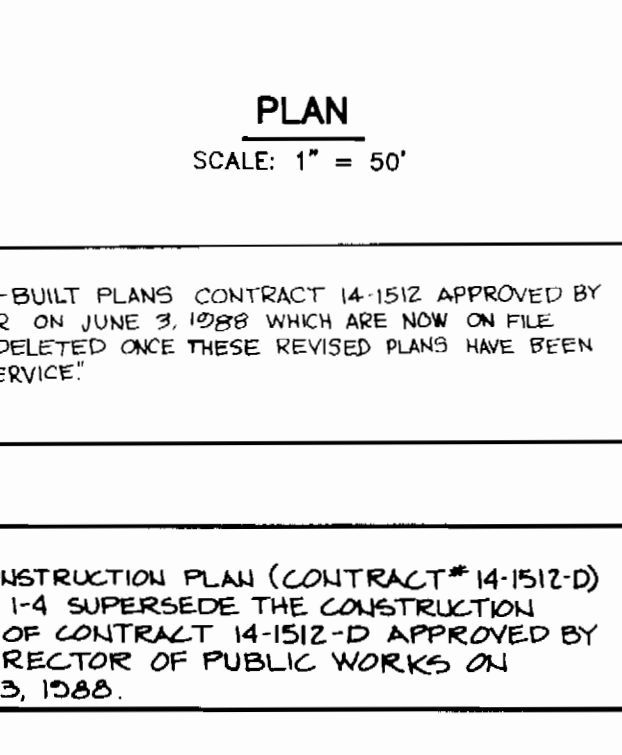
S.H.A. PLAT NO. 34722

S.H.A. PLAT NO. 34720

LEGEND



INTERSTATE 95



STRUCTURE SCHEDULE

MH NO.	LOCATION
MH-1	CL STA 3+56.34 HUNTSBRIDGE DRIVE OFFSET 2.20' LEFT
MH-2	CL STA 4+53.15 HUNTSBRIDGE DRIVE OFFSET 2.85' LEFT
MH-3	CL STA 6+32.15 HUNTSBRIDGE DRIVE OFFSET 11.18' LEFT
MH-4	CL STA 7+87.62 HUNTSBRIDGE DRIVE OFFSET 7.51' RIGHT
MH-5	CL STA 10+14.62 HUNTSBRIDGE DRIVE OFFSET 7.47' RIGHT
MH-6	CL STA 3+06.58 OLD HIGHGATE DRIVE OFFSET 7.00' RIGHT
MH-7	CL STA 2+02.98 FRIAR TUCK COURT OFFSET 7.00' LEFT
MH-8	CL STA 1+88.89 EAST GATE DRIVE OFFSET 7.00' LEFT
MH-9	CL STA 3+06.58 OLD ROCKBRIDGE DRIVE OFFSET 7.00' RIGHT
MH-10	CL STA 4+90.71 OLD ROCKBRIDGE DRIVE OFFSET 7.00' RIGHT
MH-11	CL STA 1+80.71 OLD ROCKBRIDGE DRIVE OFFSET 7.00' RIGHT
MH-12	CL STA 11+62.89 HUNTSBRIDGE DRIVE OFFSET 7.45' RIGHT
MH-13	CL STA 1+06.13 TOUCHSTONE WAY OFFSET 8.72' LEFT
EX MH-14	CL STA 00+7.37 HUNTSBRIDGE DRIVE OFFSET 5.43 LEFT
MH-101	CL STA 3+78.58 OLD HIGHGATE DRIVE OFFSET 7.00' RIGHT
MH-102	CL STA 7+90.48 OLD HIGHGATE DRIVE OFFSET 5.23 RIGHT
MH-103	CL STA 3+96.05 WOODLAND FOREST DRIVE OFFSET 7.00' LEFT
MH-104	CL STA 7+96.05 WOODLAND FOREST DRIVE OFFSET 8.88' LEFT
MH-105	CL STA 1+03.89 EAST GATE DRIVE OFFSET 7.00' LEFT

QUANTITIES

ITEM	QUANTITY	AS-BUILT	SUPPLIER
WATER METER VAULT	95	94 EA	MAYER BROS.
8" WATER	4126 LF	4126 LF	ATLANTIC STATES
8" WATER	395 LF	544 LF	ATLANTIC STATES
8" VALVES	8 ea.	8 EA	MUELLER CO.
8" VALVES (EXPHYS)	2 ea.	2 EA	MUELLER CO.
FIRE HYDRANTS	10 ea.	10 EA	MUELLER CO.
1" W/C	570 LF	712 LF	HALSTEAD IND.
3/4" W/C	840 LF	1130 LF	HALSTEAD IND.
8" SEWER	1652 LF	2522 LF	J-M MFG.
8" SEWER (D.I.P.)	97 LF	93 LF	ATLANTIC PRECAST
MANHOLES	195 VF	15 EA	ATLANTIC PRECAST
8" S/C	1419 LF	1419 LF	J-M MFG.
16" S.T.S. V.	2 ea.	2 EA	MUELLER CO.
3" BLOWOFF W/4" V.	2 ea.	2 EA	MUELLER CO.
4" VALVE	1 ea.	1 EA	MUELLER CO.

HOWARD SOIL CONSERVATION DISTRICT:
 REVIEWED FOR HOWARD SOIL CONSERVATION DISTRICT AND MEETS TECHNICAL REQUIREMENTS

James M. Haly / JMH
 U.S. SOIL CONSERVATION SERVICE
 DATE: 7/2/91

THIS PLAN IS APPROVED FOR SOIL EROSION AND SEDIMENT CONTROL BY THE HOWARD SOIL CONSERVATION DISTRICT.

John R. Robertson
 HOWARD SOIL CONSERVATION DISTRICT
 DATE: 7/14/91

SEDIMENT CONTROL MEASURES FOR THIS CONTRACT WILL BE IMPLEMENTED IN ACCORDANCE WITH SECTION 219 OF THE HOWARD COUNTY STANDARD SPECIFICATIONS AND AS PER SDP-86-234.

DEPARTMENT OF PUBLIC WORKS
 HOWARD COUNTY, MARYLAND

James M. Haly 7/15/91
 DIRECTOR OF PUBLIC WORKS DATE

Robert R. Bennett 7-9-91
 CHIEF, BUREAU OF UTILITIES DATE

William E. Perry 7-15-91
 CHIEF, BUREAU OF ENGINEERING DATE

John M. Pongman 7/14/91
 CHIEF, LAND DEVELOPMENT DIVISION DATE

TSA GROUP INC.
 planning • engineering • surveying
 8480 Baltimore National Pike • Suite 418
 Ellicott City, Maryland 21043

DES: RJW
 DRN: JH
 CHK: DAM
 DATE: 5/8/91

BY	NO.	REVISIONS	DATE
MWM		AS-BUILTS (SHEET 5A OF 6)	2-20-96
JCO	2	ADD WATER METER UTILITY EASEMENTS	9-13-95
MLV	1	REV. W/C & S/C LOT 95	6-28-95

PLAN OF WATER & SEWER MAINS

600 SCALE MAP NO. 42 BLOCK NO. 16

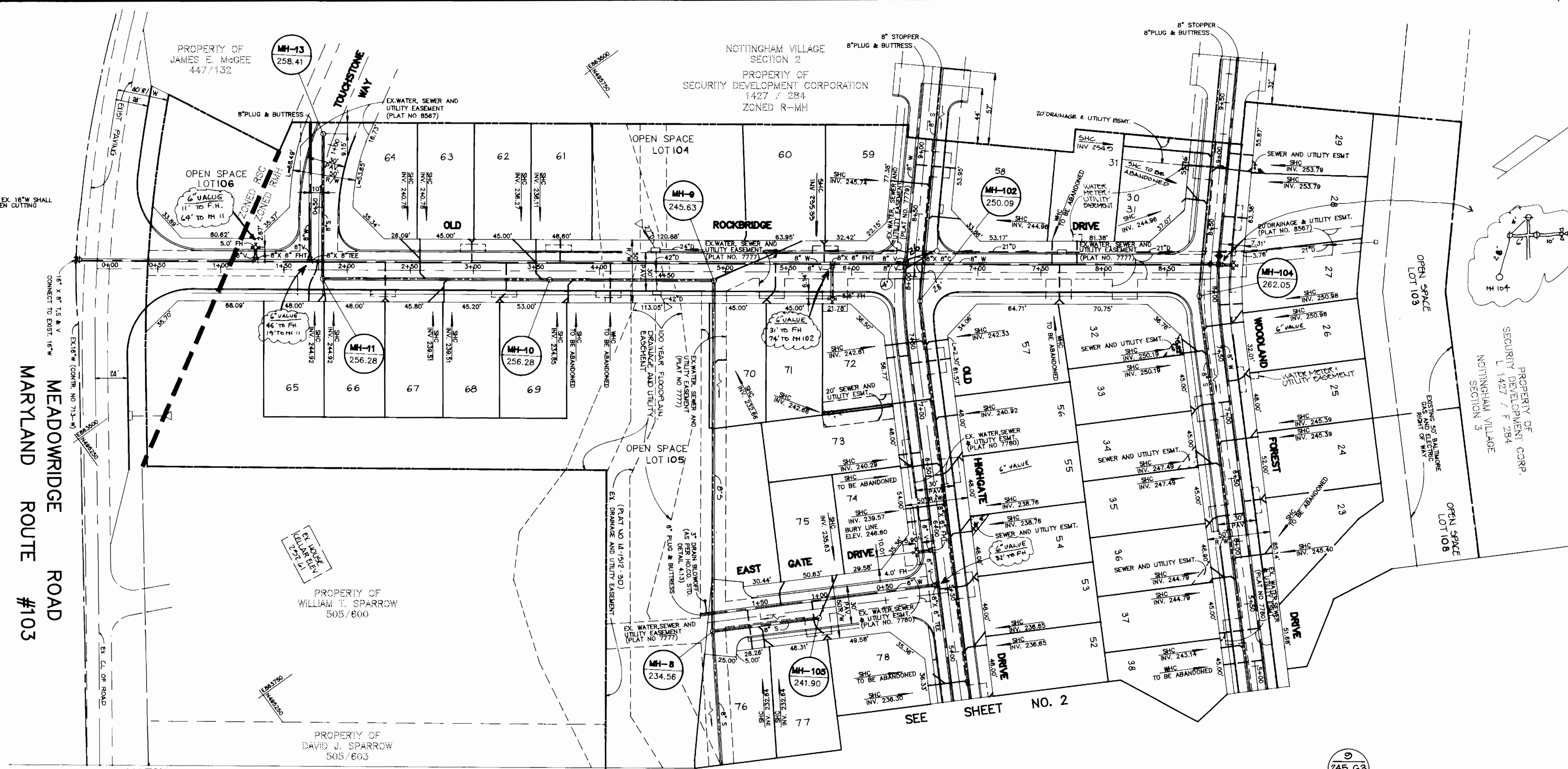
NOTTINGHAM VILLAGE SECTION ONE
 LOTS 4-110

ELECTION DISTRICT NO. 1
CONTRACT NO. 14-1512-D

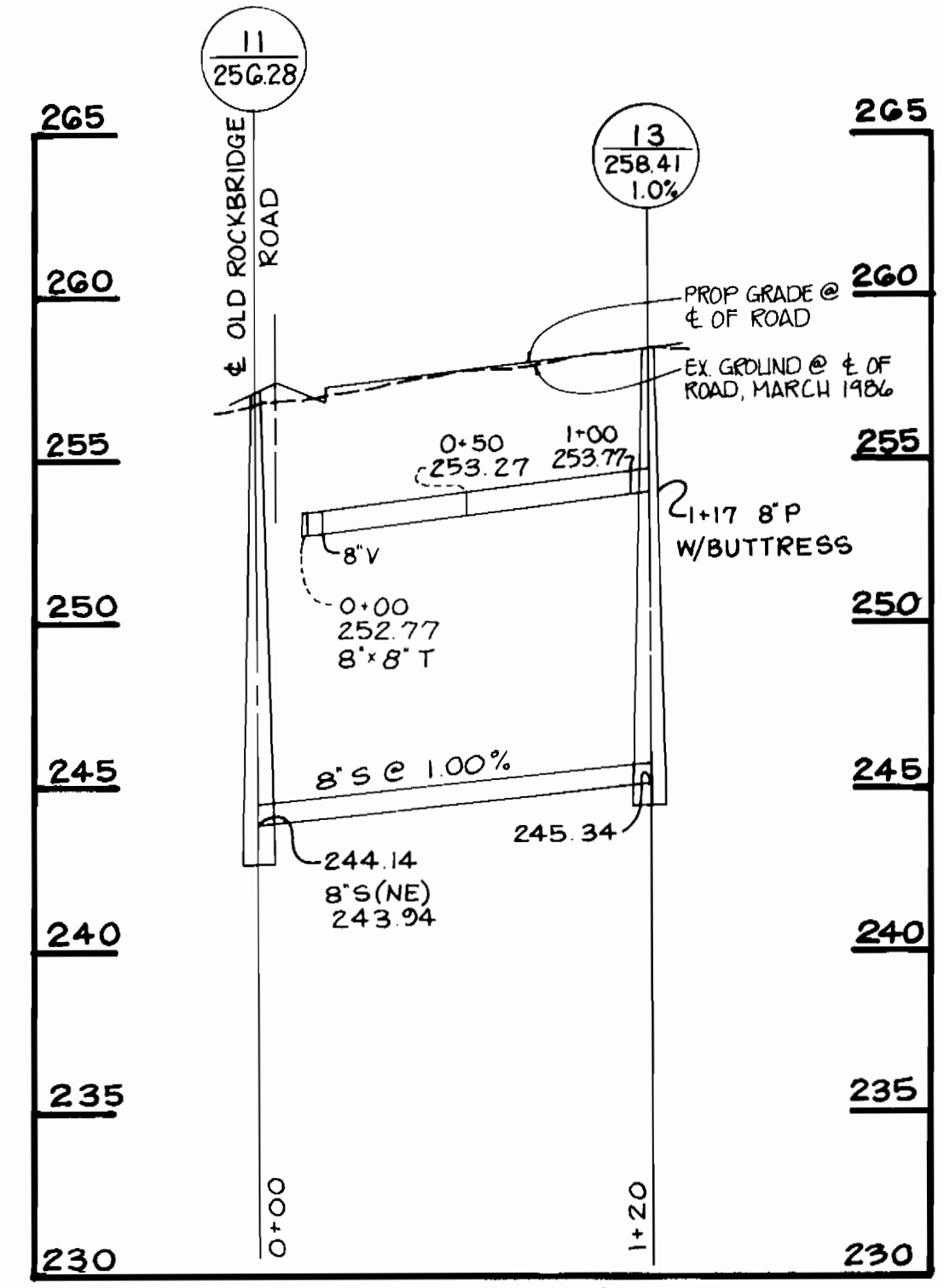
SCALE AS SHOWN
 SHEET 1A OF 8

NOTE:
CONNECTION TO EX. 18" W. SHALL
BE DONE BY OPEN CUTTING
ON ROUTE 103

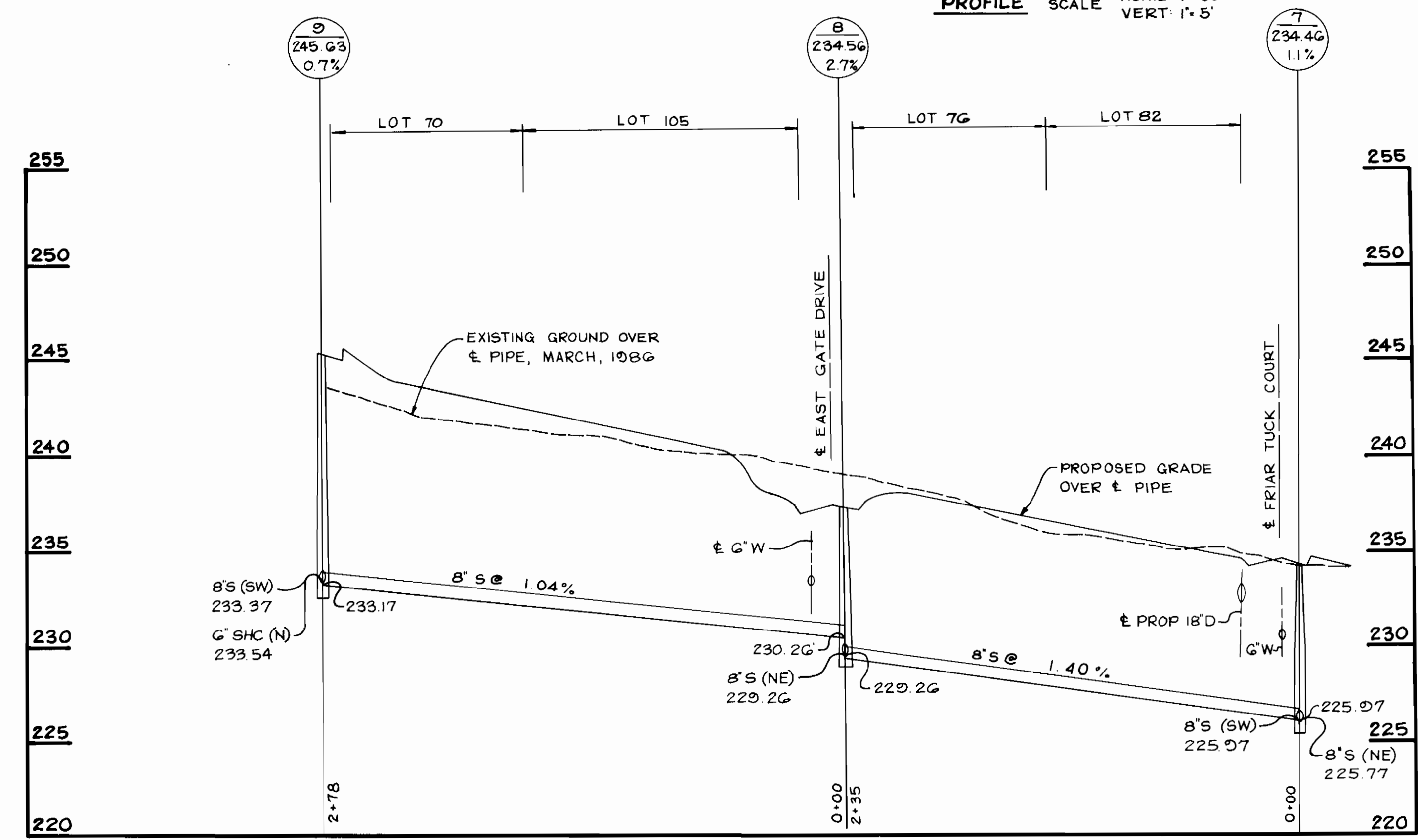
MEADOWBRIDGE ROAD
MARYLAND ROUTE #103



PLAN
SCALE: 1" = 50'

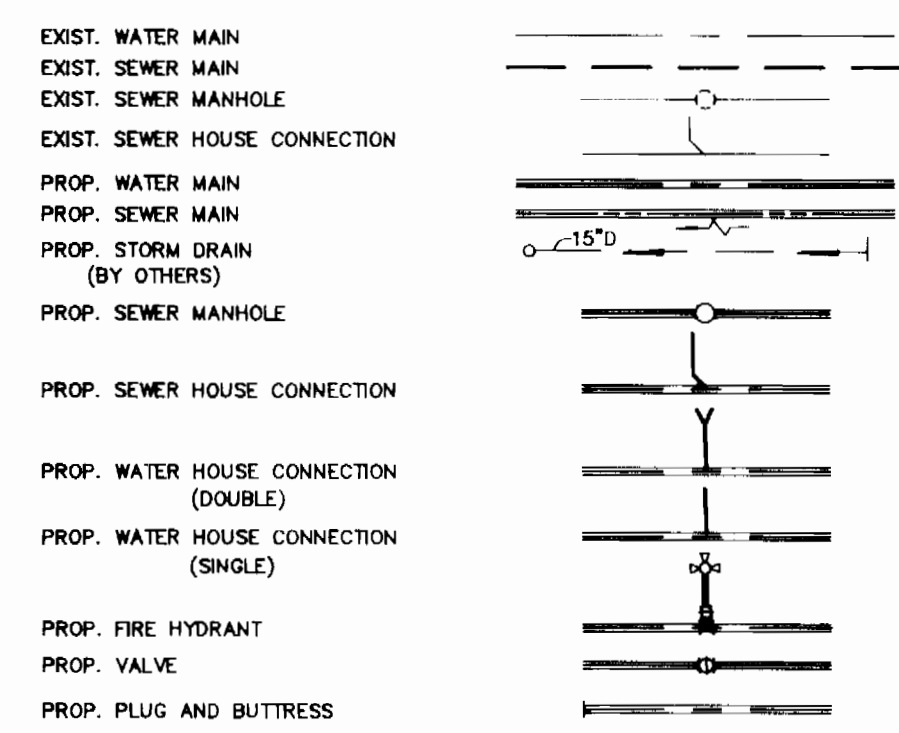


PROFILE SCALE HORIZ: 1" = 50'
VERT: 1" = 5'



PROFILE SCALE HORIZ: 1" = 50'
VERT: 1" = 5'

LEGEND



NOTES FOR ABANDONMENT OR RELOCATION OF HOUSE CONNECTIONS

- WATER HOUSE CONNECTIONS:**
- ALL WATER VAULTS SHALL BE RELOCATED TO THE PROPERTY LINE AS PER COUNTY CODE.
 - WHEN ABANDONING A WATER HOUSE CONNECTION WHERE A DOUBLE HOUSE CONNECTION SERVES ONE BUILDABLE LOT AND ONE OPEN SPACE LOT THE CONNECTION TO THE OPEN SPACE LOT WILL NOT RECEIVE A METER.
 - WHEN ABANDONING A SINGLE WATER HOUSE CONNECTION, ABANDON THE HOUSE CONNECTION BACK TO THE WATER MAIN AND REPAIR PAVING IN ACCORDANCE WITH COUNTY SPECIFICATIONS. REMOVE CORPORATION STOP AND PLUG THE MAIN.
- SEWER HOUSE CONNECTIONS:**
- WHERE A TWIN SEWER HOUSE CONNECTION IS INSTALLED AND ONE CONNECTION SERVES A BUILDABLE LOT AND THE OTHER AN OPEN SPACE LOT, ABANDON THE OPEN SPACE LOT CONNECTION AT THE "Y".
 - WHEN A SINGLE SEWER HOUSE CONNECTION IS TO BE ABANDONED, REMOVE THE SEWER HOUSE CONNECTION BACK TO THE SEWER MAIN AND PLUG SEWER MAIN AT WYE. REPAIR PAVING IN ACCORDANCE WITH COUNTY SPECIFICATIONS.
 - AT THE TIME THE BUILDER CONNECTS TO THE SEWER HOUSE CONNECTION THEY SHALL INSTALL A CLEANOUT AT THE PROPERTY LINE AS PER HOWARD COUNTY STD S-2-22. DEVELOPER SHALL INSTALL STAND PIPE TO WITHIN 5 FEET ON FINISHED GRADE PER STANDARD DETAIL S-2-22.

DEPARTMENT OF PUBLIC WORKS
HOWARD COUNTY, MARYLAND

Director of Public Works: *[Signature]* 7/9/91
Chief, Bureau of Engineering: *[Signature]* 7/15/91
Chief, Bureau of Utilities: *[Signature]* 7/9/91
Chief, Land Development Division: *[Signature]* 7/1/91

TSA GROUP INC.

planning • engineering • surveying
8480 Baltimore National Pike • Suite 418
Ellicott City, Maryland 21043



DES: RJW			
DRN: JH			
CHK: DAM			
DATE: 5/8/91	J.C.O. ?	ADD WATER METER - UTILITY EASEMENTS	0-10-95
BY NO.		REVISIONS	DATE

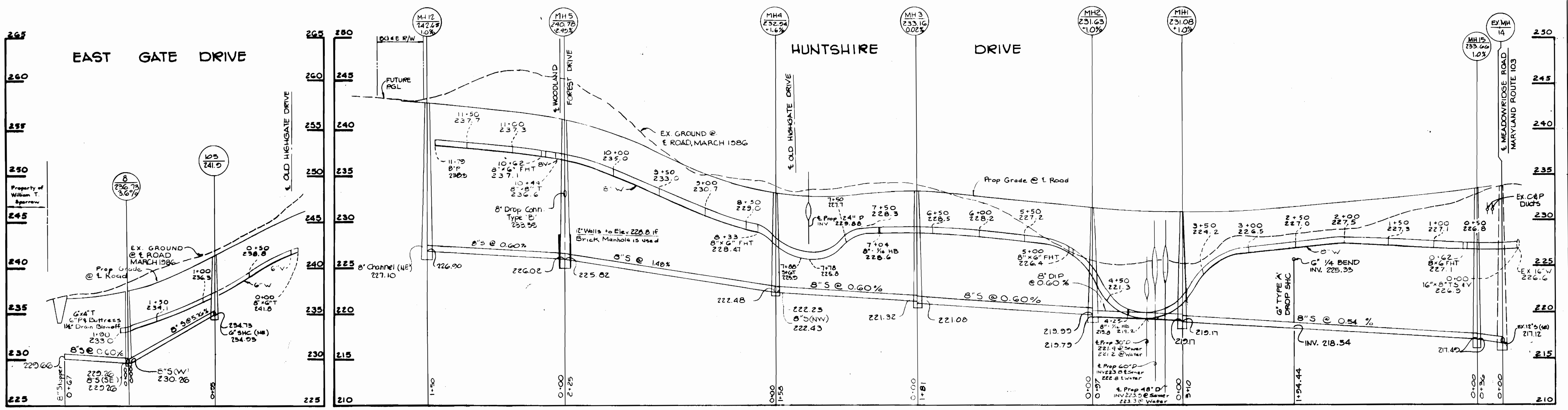
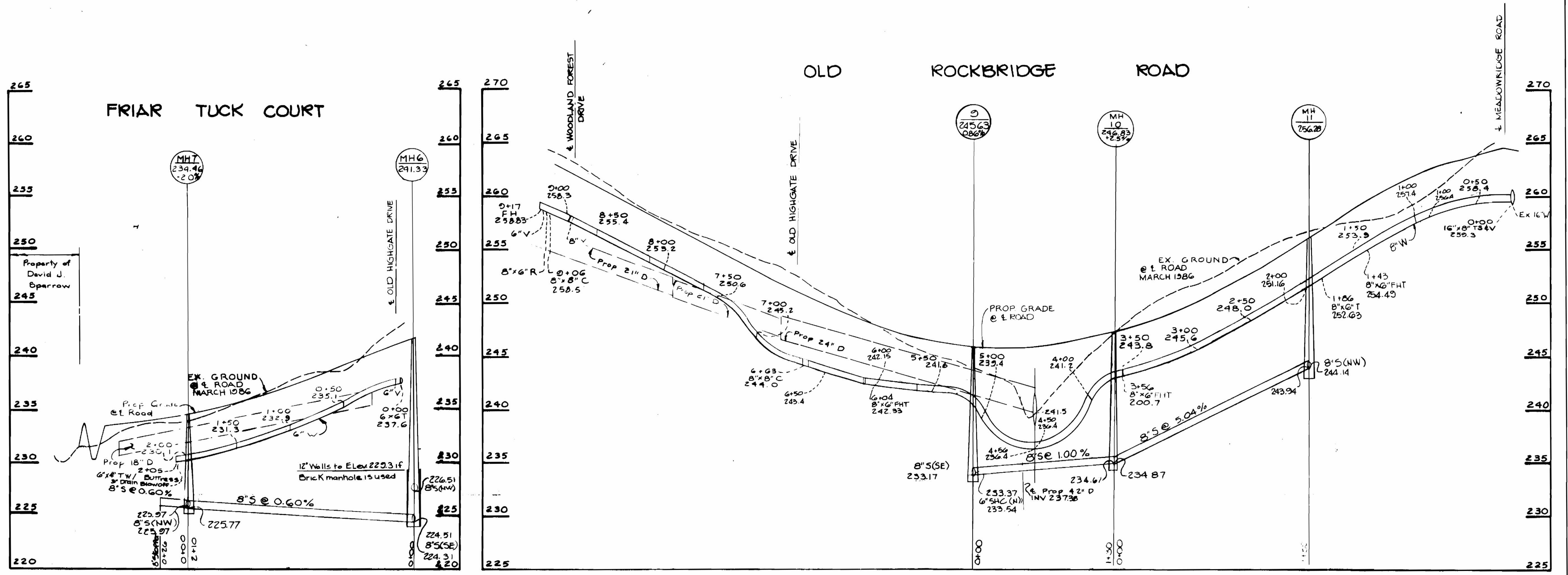
PLAN AND PROFILE OF
WATER & SEWER MAINS

NOTTINGHAM VILLAGE
SECTION ONE
LOTS 4-110

ELECTION DISTRICT NO. 1
CONTRACT NO. 14-1512-D

SCALE AS SHOWN
SHEET 2A OF 8

600 SCALE MAP NO. 42 BLOCK NO. 16



DEPARTMENT OF PUBLIC WORKS
 HOWARD COUNTY, MARYLAND
 7/15/91
 7-9-91

TS&A GROUP INC.
 planning architecture engineering
 8480 Baltimore National Pike
 Ellicott City, Maryland 21043

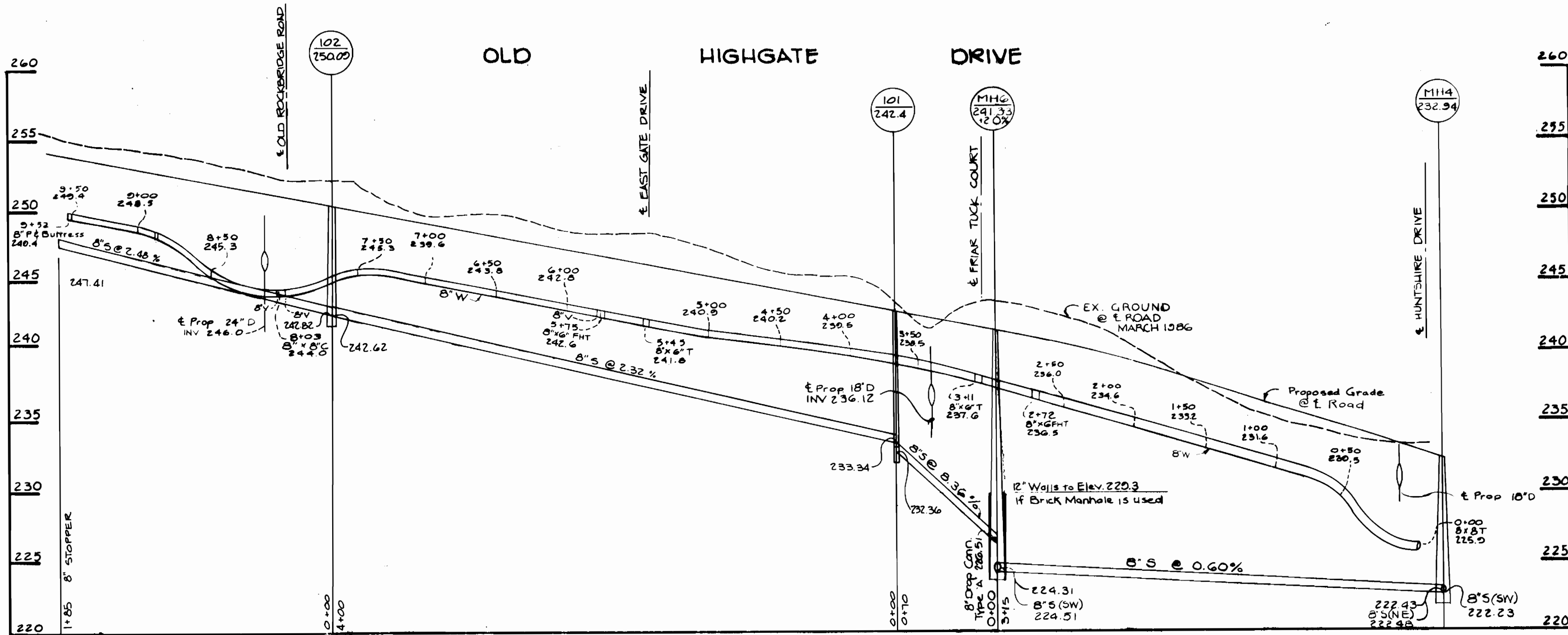
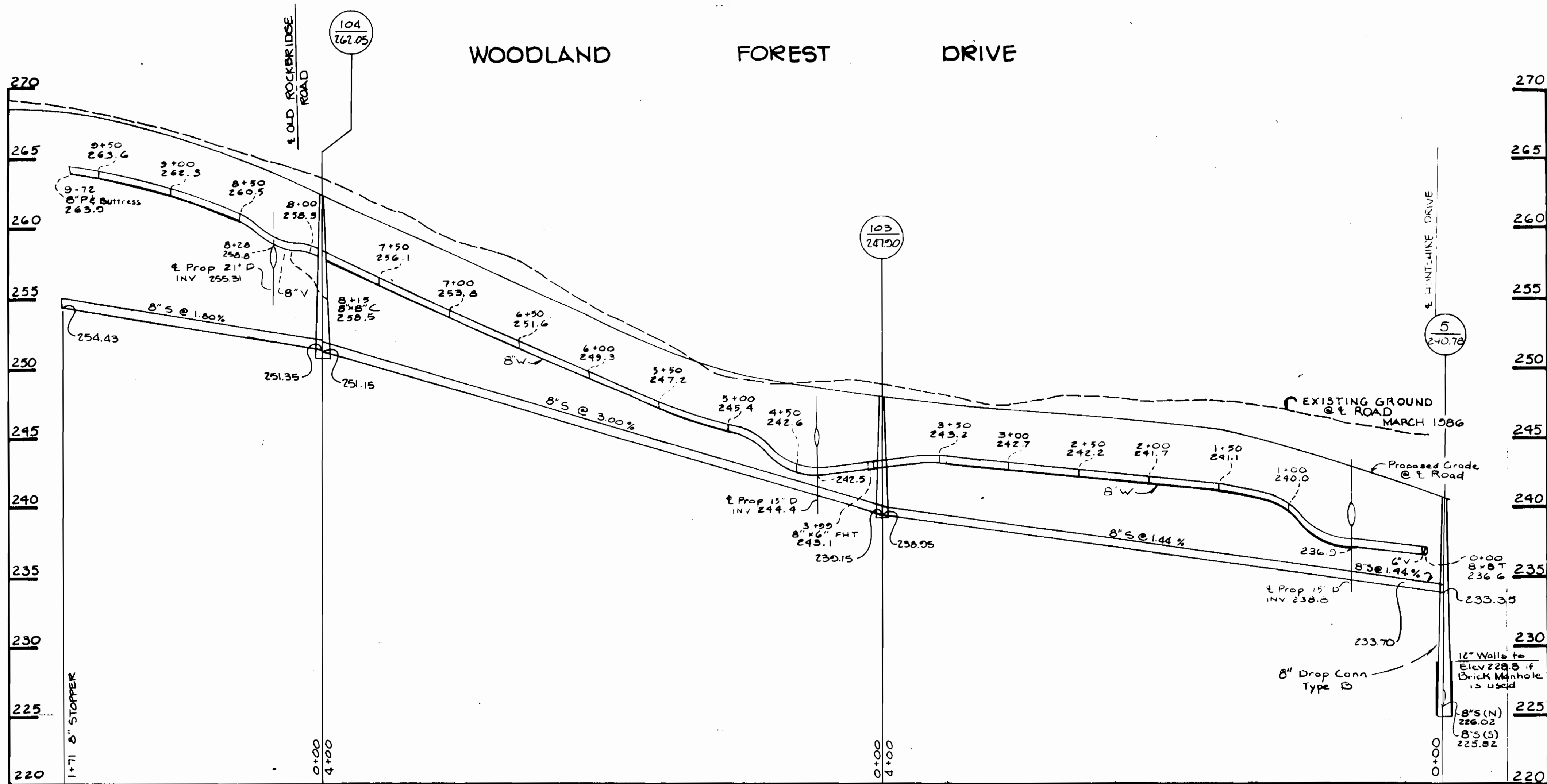


DES: RJW	ML.V. 1	ADDED DHC BETWEEN MH 1 & MH 15	6-28-91
DRN: SAB	BY NO.	REVISION	DATE
CHK: JKT			
DATE: 4 27 88			

PROFILES OF
 WATER & SEWER MAINS
 600' SCALE MAP NO. 37 BLOCK NO. 15 B 16

NOTTINGHAM VILLAGE
 SECTION ONE
 LOTS 4-110
 ELECTION DISTRICT NO. 1
 CONTRACT NO. 14-1512-D

SCALE
 H: 1" = 50'
 V: 1" = 5'
 SHEET
 2A OF 8



DEPARTMENT OF PUBLIC WORKS
HOWARD COUNTY, MARYLAND

James J. Lewis 7-15-91
DIRECTOR OF PUBLIC WORKS DATE

John S. ... 7-15-91
CHIEF, BUREAU OF ENGINEERING DATE

TSA GROUP INC.

planning architecture engineering
8480 Baltimore National Pike Suite 418
Ellicott City, Maryland 21043



DES: RJW			
DRN: SAB			
CHK: JKT			
DATE: 4 27 88	BY: A.O.	REVISION	DATE

PROFILES OF
WATER & SEWER MAINS

600' SCALE MAP NO. 37 BLOCK NO. 15 B 16

NOTTINGHAM VILLAGE
SECTION ONE
LOTS 4-110
ELECTION DISTRICT 10.1
CONTRACT NO. 14-1512-D

H: 1"=50'
V: 1"=5'
SCALE
SHEET
4A OF 8

SEWER AS-BUILTS

WATER AS-BUILTS

LOT #	LOT #	LOT #	LOT #	LOT #	LOT #
4 48' TO MH 3 12' TO WHC 4	87 21' TO SHC 86	65 3' TO WHC 65 17' TO SHC 66	4 37' TO MH 3 12' TO SHC 4	87 NO DATA	65 3' TO SHC 65 17' TO WHC 66
5 6' TO WHC 5 29' TO S.D. INLET	88 36' TO WHC 88 16' TO SHC 89	66 17' TO SHC 65 42' TO WHC 66	5 6' TO SHC 5 70' TO WHC 4	88 36' TO SHC 88	66 17' TO WHC 66 42' TO SHC 66
6 48' TO MH 4 12' TO WHC 6	89 16' TO SHC 88 40' TO WHC 89	67 36' TO WHC 67 17' TO SHC 68	6 12' TO SHC 6 46' TO SHC 7	89 40' TO SHC 89	67 42' TO SHC 66 36' TO SHC 67
7 46' TO WHC 7 6' TO SHC 8	90 13' TO S.D. INLET 43' TO SHC 91	68 17' TO SHC 67 44' TO WHC 68	7 12' TO SHC 6 46' TO SHC 7	90 NO DATA	68 44' TO SHC 68 43' TO SHC 69
8 6' TO SHC 7 41' TO WHC 8	91 43' TO SHC 90 10' TO WHC 91	69 43' TO WHC 69 18' TO MH 10	8 41' TO SHC 8 45' TO SHC 9	91 NO DATA	69 44' TO SHC 68 43' TO SHC 69
9 46' TO WHC 9 16' TO SHC 10	92 23' TO WHC 91	70 67' TO MH 9	9 41' TO SHC 8 45' TO SHC 9	92 NO DATA	70 49' TO MH 9 47' TO F.H.
10 16' TO SHC 9 37' TO WHC 10	93 NO DATA	71 NO DATA	10 37' TO SHC 10 46' TO SHC 11	93 NO DATA	71 49' TO MH 9 47' TO F.H.
11 46' TO WHC 11 12' TO SHC 12	94 NO DATA	72 44' TO MH 102 11' TO WHC 72	11 37' TO SHC 10 45' TO SHC 11	94 NO DATA	72 11' TO SHC 72
12 13' TO WHC 12 54' TO MH 12	95 NO DATA	73 6' TO WHC 73 73' TO SHC 74	12 13' TO SHC 12 42' TO MH 12	95 NO DATA	73 33' TO SHC 73 6' TO SHC 74
13 16' TO WHC 13	96 NO DATA	74 73' TO SHC 73	13 14' TO SHC 13 68' TO MH 12	96 NO DATA	74 24' TO F.H.
14 22' TO WHC 14 7' TO SHC 16	97 NO DATA	75 39' TO WHC 75 26' TO MH 105	14 22' TO SHC 14	97 36' TO LT. CORNER BLDG. 27' TO RT. CORNER BLDG.	75 42' TO MH 105 39' TO SHC 75
15 7' TO SHC 14 49' TO WHC 15	23 30' TO WHC 23	76 9' TO WHC 76 11' TO SHC 77	15 40' TO SHC 15 44' TO SHC 16	23 30' TO SHC 23 48' TO SHC 24	76 9' TO SHC 76 57' TO MH 105
16 44' TO WHC 16 20' TO SHC 17	24 48' TO WHC 24 8' TO SHC 25	77 11' TO SHC 76 35' TO WHC 77	16 40' TO SHC 15 44' TO SHC 16	24 30' TO SHC 23 48' TO SHC 24	77 16' TO MH 105
17 20' TO SHC 16	25 8' TO SHC 24 45' TO WHC 25	78 NO DATA	17 40' TO SHC 17 41' TO SHC 18	25 45' TO SHC 25 44' TO SHC 26	78 15' TO MH 105
18 4' TO WHC 18 24' TO SHC 19	26 44' TO WHC 26 9' TO SHC 27		18 40' TO SHC 17 41' TO SHC 18	26 45' TO SHC 25 44' TO SHC 26	
19 24' TO SHC 18	27 9' TO SHC 26 11' TO WHC 27		19 44' TO SHC 19 31' TO SHC 20	27 11' TO SHC 27 66' TO WHC 28	
20 3' TO WHC 20 44' TO SHC 21	28 32' TO WHC 28 6' TO SHC 29		20 44' TO SHC 19 31' TO SHC 20	28 66' TO WHC 27 32' TO SHC 28	
21 NO DATA	29 6' TO SHC 28 14' TO WHC 29		21 19' TO SHC 21 11' TO F.H.	29 14' TO SHC 29	
22 NO DATA	30 24' TO WHC 30 60' TO S.D. INLET		22 12' TO SHC 22 12' TO SHC 21	30 24' TO SHC 30 38' TO SHC 31	
29 24' TO WHC 39 13' TO SHC 40	31 38' TO WHC		29 49' TO MH 103 34' TO SHC 39	31 14' TO S.D. INLET 51' TO WHC 32	
40 13' TO SHC 39 44' TO WHC 40	32 8' TO SHC 33		40 44' TO SHC 40 39' TO SHC 41	32 51' TO WHC 31 31' TO S.D. INLET	
41 39' TO WHC 41 12' TO SHC 42	33 49' TO WHC 33 8' TO SHC 32		41 44' TO SHC 40 39' TO SHC 41	33 49' TO SHC 33 31' TO SHC 34	
42 12' TO SHC 41 40' TO WHC 42	34 3' TO WHC 34		42 40' TO SHC 42 42' TO SHC 43	34 49' TO SHC 33 31' TO SHC 34	
43 42' TO WHC 43 6' TO SHC 44	35 59' TO WHC 35		43 40' TO SHC 42 42' TO SHC 43	35 59' TO SHC 35 34' TO SHC 36	
44 6' TO SHC 43 40' TO WHC 44	36 34' TO WHC 36 16' TO SHC 37		44 40' TO SHC 44 47' TO SHC 45	36 34' TO SHC 36 59' TO SHC 35	
45 51' TO S.D. INLET 47' TO WHC 44	37 16' TO SHC 36 44' TO WHC 37		45 76' TO MH 5 58' TO SHC 46	37 44' TO SHC 37 8' TO SHC 38	
46 33' TO WHC 46 58' TO WHC 45	38 8' TO WHC 37		46 33' TO SHC 46 43' TO F.H.	38 8' TO SHC 38 44' TO SHC 37	
47 38' TO WHC 47 18' TO SHC 48	52 47' TO WHC 52		47 38' TO SHC 47 66' TO MH 6	52 47' TO SHC 52 52' TO SHC 78	
48 18' TO SHC 47 36' TO WHC 48	53 NO DATA		48 34' TO SHC 48 26' TO SHC 49	53 NO DATA	
49 26' TO WHC 49 67' TO WHC 50	54 43' TO WHC 54 11' TO SHC 55		49 26' TO SHC 49 54' TO MH 101	54 43' TO SHC 54	
50 21' TO MH 101 10' TO SHC 51	55 11' TO SHC 54 11' TO WHC 55		50 67' TO SHC 49 21' TO SHC 50	55 11' TO SHC 55 31' TO SHC 56	
51 10' TO SHC 50 39' TO WHC 51	56 31' TO WHC 56 49' TO WHC 57		51 39' TO SHC 51 86' TO MH 101	56 11' TO SHC 55 31' TO SHC 56	
79 12' TO WHC 79 64' TO MH 101	57 16' TO WHC 57 39' TO MH 102		79 12' TO SHC 79 62' TO MH 101	57 49' TO SHC 56 14' TO SHC 57	
80 20' TO S.D. INLET 33' TO WHC 80	58 31' TO S.D. INLET 38' TO WHC 58		80 NO DATA	58 38' TO SHC 58 38' TO S.D. INLET	
81 50' TO WHC 81 12' TO SHC 82	59 64' TO S.D. MH 46' TO S.D. INLET		81 50' TO SHC 81 33' TO SHC 80	59 9' TO MH 9	
82 12' TO SHC 81 10' TO WHC 82	60 49' TO MH 9 49' TO WHC 60		82 10' TO SHC 82 46' TO MH 7	60 9' TO MH 9 49' TO SHC 60	
83 35' TO MH 7 4' TO WHC 83	61 22' TO WHC 61 10' TO SHC 62		83 4' TO SHC 83 35' TO MH 7	61 22' TO SHC 61 27' TO MH 10	
84 8' TO WHC 84 11' TO SHC 85	62 10' TO SHC 61 38' TO WHC 62		84 8' TO SHC 84	62 38' TO SHC 62 67' TO MH 10	
85 11' TO SHC 84 44' TO WHC 85	63 42' TO WHC 63 13' TO SHC 64		85 44' TO SHC 85 37' TO SHC 86	63 38' TO SHC 62 42' TO SHC 63	
86 37' TO WHC 86 21' TO SHC 87	64 13' TO SHC 63 72' TO MH 11		86 37' TO SHC 86 44' TO SHC 85	64 NO DATA	

1512 AS-BUILT INFO.

DEPARTMENT OF PUBLIC WORKS
HOWARD COUNTY, MARYLAND

DIRECTOR OF PUBLIC WORKS DATE CHIEF, BUREAU OF ENGINEERING DATE

DES:					
DRN:					
CHK:					
DATE:	BY	NO.	REVISION	DATE	600' SCALE MAP NO. BLOCK NO.

AS-BUILTS
WATER & SEWER

NOTTINGHAM VILLAGE
SECTION ONE
LOTS 4-110

CONTRACT NO. 14-1512-D

SCALE
AS
SHOWN

SHEET
5A OF 8