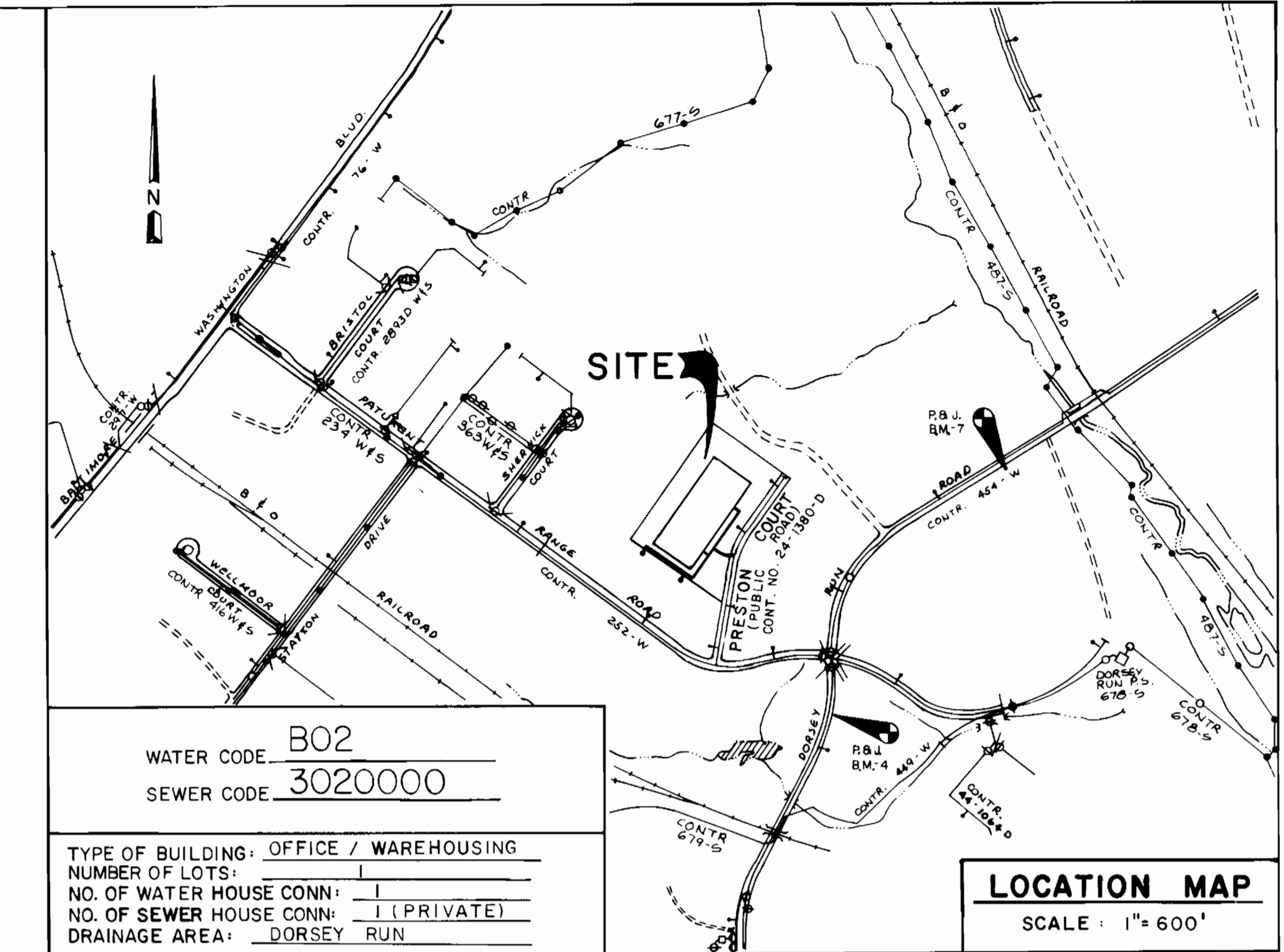


BENCHMARKS: (SEE LOCATION MAP)
 - P.B.J. BM#4 ELEV. 211.740
 RR SPIKE SET IN CAP#26, G&E#263656, S. SIDE DORSEY RUN ROAD
 - P.B.J. BM#7 ELEV. 177.244
 RR SPIKE SET IN G&E POLE#263650, S. SIDE DORSEY RUN ROAD



WATER CODE: B02
 SEWER CODE: 3020000
 TYPE OF BUILDING: OFFICE / WAREHOUSING
 NUMBER OF LOTS: 1
 NO. OF WATER HOUSE CONN: 1
 NO. OF SEWER HOUSE CONN: 1 (PRIVATE)
 DRAINAGE AREA: DORSEY RUN

GENERAL NOTES

- PART 1:**
- APPROXIMATE LOCATION OF EXISTING MAINS ARE SHOWN. THE CONTRACTOR SHALL TAKE ALL NECESSARY PRECAUTIONS TO PROTECT EXISTING MAINS AND SERVICES AND MAINTAIN UNINTERRUPTED SUPPLY. ANY DAMAGE INCURRED SHALL BE REPAIRED IMMEDIATELY TO THE SATISFACTION OF THE ENGINEER AT THE CONTRACTORS EXPENSE.
 - ALL HORIZONTAL CONTROLS ARE BASED ON MARYLAND STATE COORDINATES.
 - ALL VERTICAL CONTROLS ARE BASED ON USGS DATUM.
 - ALL PIPE ELEVATIONS SHOWN ARE INVERT ELEVATIONS.
 - CLEAR ALL UTILITIES BY A MINIMUM OF 6" CLEAR ALL POLES BY 2'-0" MINIMUM OR TUNNEL AS REQUIRED. ANY COST INCURRED TO THE CONTRACTOR FOR TUNNELING OR BRACING AT POLES SHALL BE INCLUDED IN UNIT PRICES BID FOR EXCAVATION AND BACKFILL.
 - FOR DETAILS NOT SHOWN ON DRAWINGS USE HOWARD COUNTY STANDARD DETAILS.
 - FOR MATERIALS AND CONSTRUCTION METHODS USE HOWARD COUNTY STD. SPECIFICATIONS.
 - CONTRACTOR SHALL LOCATE EXISTING UTILITIES A MINIMUM OF TWO (2) WEEKS IN ADVANCE OF CONSTRUCTION OPERATIONS IN THE VICINITY OF PROPOSED UTILITIES AT HIS OWN EXPENSE.
 - CONTRACTOR SHALL NOTIFY THE FOLLOWING UTILITIES OR AGENCIES AT LEAST FIVE (5) WORKING DAYS BEFORE STARTING WORK:

STATE HIGHWAY ADMINISTRATION	(301) 531-5833
BALTIMORE GAS & ELECTRIC (CUSTOMER SERVICE)	(301) 685-0123
UNDERGROUND DISTRIBUTION	(301) 685-0123
ENGINEERING "DAMAGE CONTROL"	(301) 234-5621
"MISS UTILITY"	1-(800) 257-7777
CHESAPEAKE & POTOMAC (C&P) TELEPHONE CO.	(301) 887-0565
AMERICAN TELEPHONE & TELEGRAPH (A T & T)	(301) 865-3803
COLONIAL PIPELINE CO.	(301) 781-4641
BUREAU OF UTILITIES, HOWARD COUNTY	(301) 992-2366
 - TREES ARE TO BE PROTECTED FROM DAMAGE TO MAXIMUM EXTENT. TREES LOCATED WITHIN THE CONSTRUCTION STRIP ARE NOT TO BE REMOVED OR DAMAGED BY THE CONTRACTOR.
 - CONTRACTOR SHALL REMOVE TREES, STUMPS AND ROOTS ALONG LINE OF EXCAVATION AS DIRECTED BY THE ENGINEER. PAYMENT FOR SUCH REMOVAL SHALL BE INCLUDED IN THE UNIT PRICE BID FOR EXCAVATION AND BACKFILL.
 - PLACE REGULATION "MEN WORKING" AND WARNING SIGNS AS REQUIRED TO COMPLY WITH MARYLAND STATE HIGHWAY ADMINISTRATION MANUAL OF TRAFFIC CONTROL FOR HIGHWAY CONSTRUCTION AND MAINTENANCE OPERATIONS.

PART 2:

- ALL WATER MAINS TO BE D.I.P. UNLESS OTHERWISE NOTED.
- TOP OF ALL WATER MAINS TO HAVE A MINIMUM OF 3'-6" COVER UNLESS OTHERWISE NOTED.
- VALVES ADJACENT TO TEES SHALL BE STRAPPED TO TEES IN ACCORDANCE WITH STD. DETAILS.
- BLOCK ALL FITTINGS WITH CONCRETE.
- BURY LINE ELEVATIONS ON FIRE HYDRANTS SHALL BE SET TO THE ELEVATIONS SHOWN ON THE DRAWINGS. ALL FIRE HYDRANTS SHALL BE STRAPPED AND BUTRESSED WITH CONCRETE IN ACCORDANCE WITH STD. DETAILS. SOIL AROUND THE FIRE HYDRANT TO BE COMPACTED IN ACCORDANCE WITH SEC. 1003 & 1008 OF THE STD. SPECIFICATIONS
- THE CONTRACTOR SHALL NOT OPERATE ANY WATER MAIN VALVES ON THE EXISTING SYSTEM.
- ALL WATER HOUSE CONNECTIONS SHALL BE FOR AN INSIDE METER SETTING UNLESS OTHERWISE NOTED.
- WATER MAINS AND WATER HOUSE CONNECTION LINES MUST BE PLACED SO AS TO HAVE AT LEAST ONE (1) FOOT SEPARATION FROM THE SEWER MAIN OR SEWER HOUSE CONNECTION AS THEY PASS ABOVE IT.

PART 3:

- ALL SEWER MAINS SHALL BE C.S.P., R.C.S.P., V.C.P., A.C.P CLASS 2400 OR P.V.C. UNLESS OTHERWISE NOTED.
- THE CONTRACTOR SHALL PROVIDE A JOINT IN ALL SEWER MAINS WITHIN 2'-0" OF EXTERIOR MANHOLE WALL.
- ALL MANHOLES SHALL BE 4'-0" INSIDE DIAMETER UNLESS OTHERWISE NOTED.

PLAN
 SCALE: 1" = 50'

FOR WATER PROFILES
 SEE SHEET 2 OF 2

QUANTITIES:			
ITEM:	ESTIMATE:	AS BUILT:	MAT'L/SUPPLIER:
6" WATER	450 L.F.	450 L.F.	UP STATE PIPE STATES
8" WATER	411 L.F.	424 L.F.	UP STATE PIPE STATES
6" FIRE HYDRANT	2	-	U.S. 4425 P.V. / MUELLER CO.
6" SEWER	8	8 L.F.	PVC 304-35 / LEMANN TEEB
MANHOLE	1	1	*MILK 200 / C&E B&T
8" VALVES	4	4	ALUM. 200 / MUELLER CO.
6" VALVES	2	-	ALUM. 200 / MUELLER CO.

REMOVE EXISTING CAP & BUTTRESS AS CONSTRUCTED UNDER CONTRACT #24-1380-D. CONSTRUCT PUBLIC SANITARY MANHOLE AND PUBLIC WATER MAIN EXTENSION AS SHOWN.

REVIEWED FOR HOWARD SCD AND MEETS TECHNICAL REQUIREMENTS.
James M. Nelson 5-23-86
 U.S. SOIL CONSERVATION SERVICE DATE

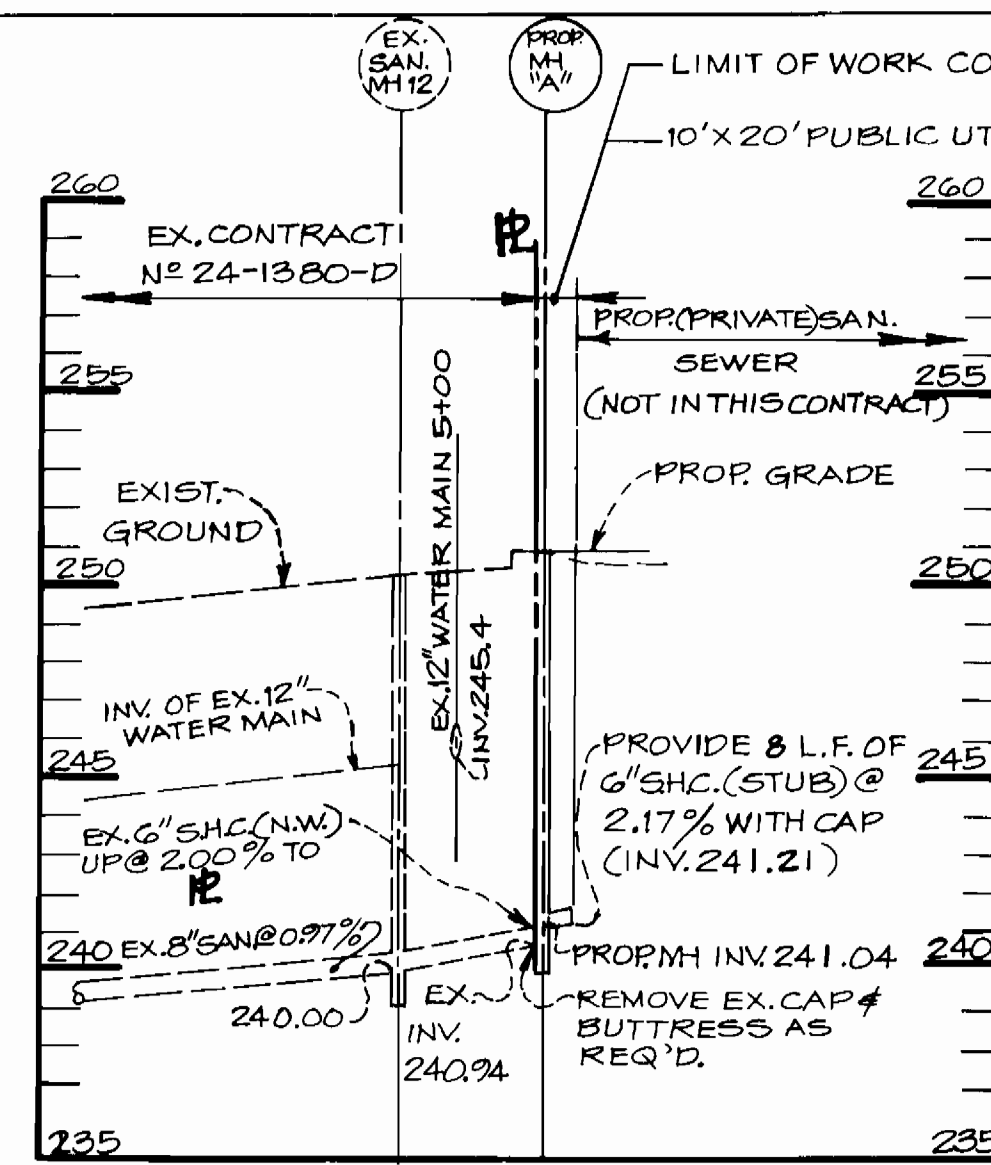
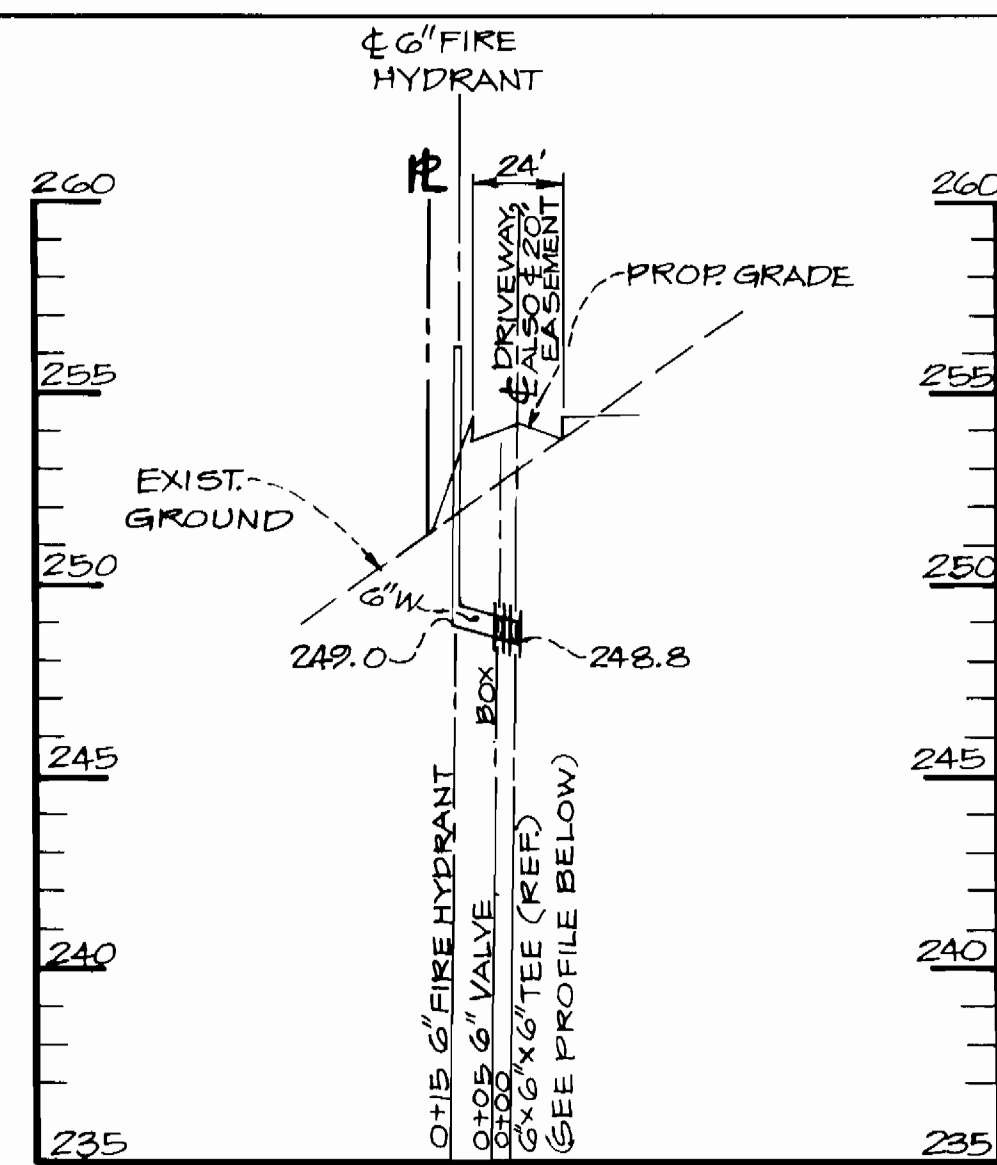
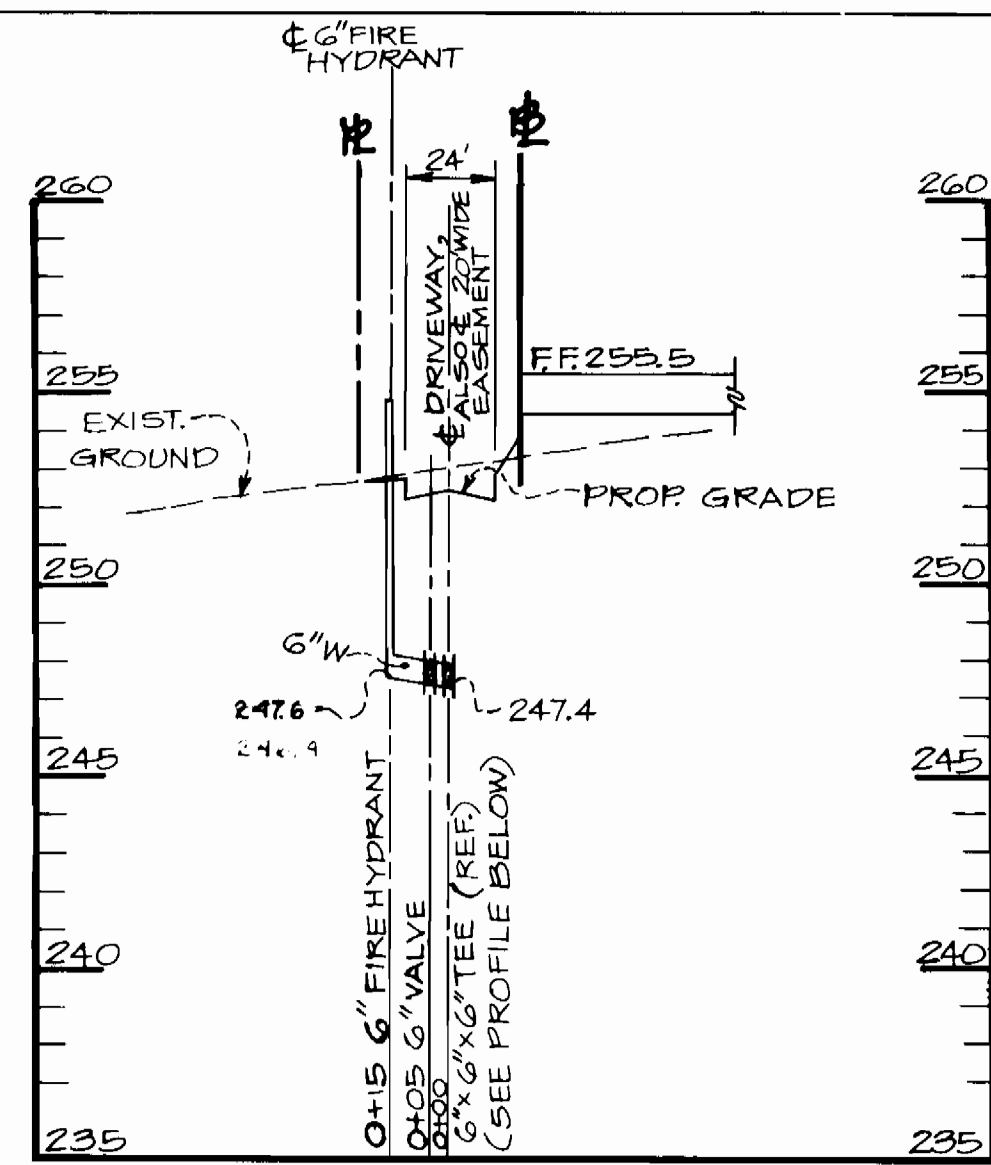
THIS DEVELOPMENT PLAN IS APPROVED FOR SOIL EROSION AND SEDIMENT CONTROL BY THE HOWARD SOIL CONSERVATION DISTRICT.

Stephen L. Hahn 5-23-86
 HOWARD SCD DATE

SEDIMENT CONTROL MEASURES FOR THIS CONTRACT WILL BE IMPLEMENTED IN ACCORDANCE WITH SECTION 15 OF THE HOWARD COUNTY DESIGN MANUAL, STANDARDS & SPECIFICATIONS FOR SOIL EROSION AND SEDIMENT CONTROL IN DEVELOPING AREAS AND S.D.P. 86 - 187

DEPARTMENT OF PUBLIC WORKS HOWARD COUNTY, MARYLAND DIRECTOR OF PUBLIC WORKS: <i>Robert M. Brinson</i> 5-29-86 CHIEF BUREAU OF UTILITIES: _____ DATE	KIDDE CONSULTANTS INC. ENGINEERS, PLANNERS & SURVEYORS 1100 WEST STREET / SUITE 100 LAUREL, MD 20707 (301) 792-8086 (301) 953-1821 JOHN E. G. PATMORE PE NO. 9975	DEC: R.R.S. DRN: MWG. CHK: MSS DATE: MAY 19, 1986	PLAN OF WATER AND SEWER CONTRACT NO 24-1502-D 600' SCALE MAP NO. 48 BLOCK NO. _____	JEFFERSON BUSINESS CENTER WITHIN THE BALTIMORE WASHINGTON INDUSTRIAL PARK PARCEL "O" - BLOCK "E" TAX MAP NO. 48 6TH ELECTION DISTRICT HOWARD COUNTY, MD SCALE AS SHOWN SHEET 1 OF 2
--	---	--	---	---

AS BUILT 1/2" = 100' PLAN AND ALL DETAILS OCT, 1986

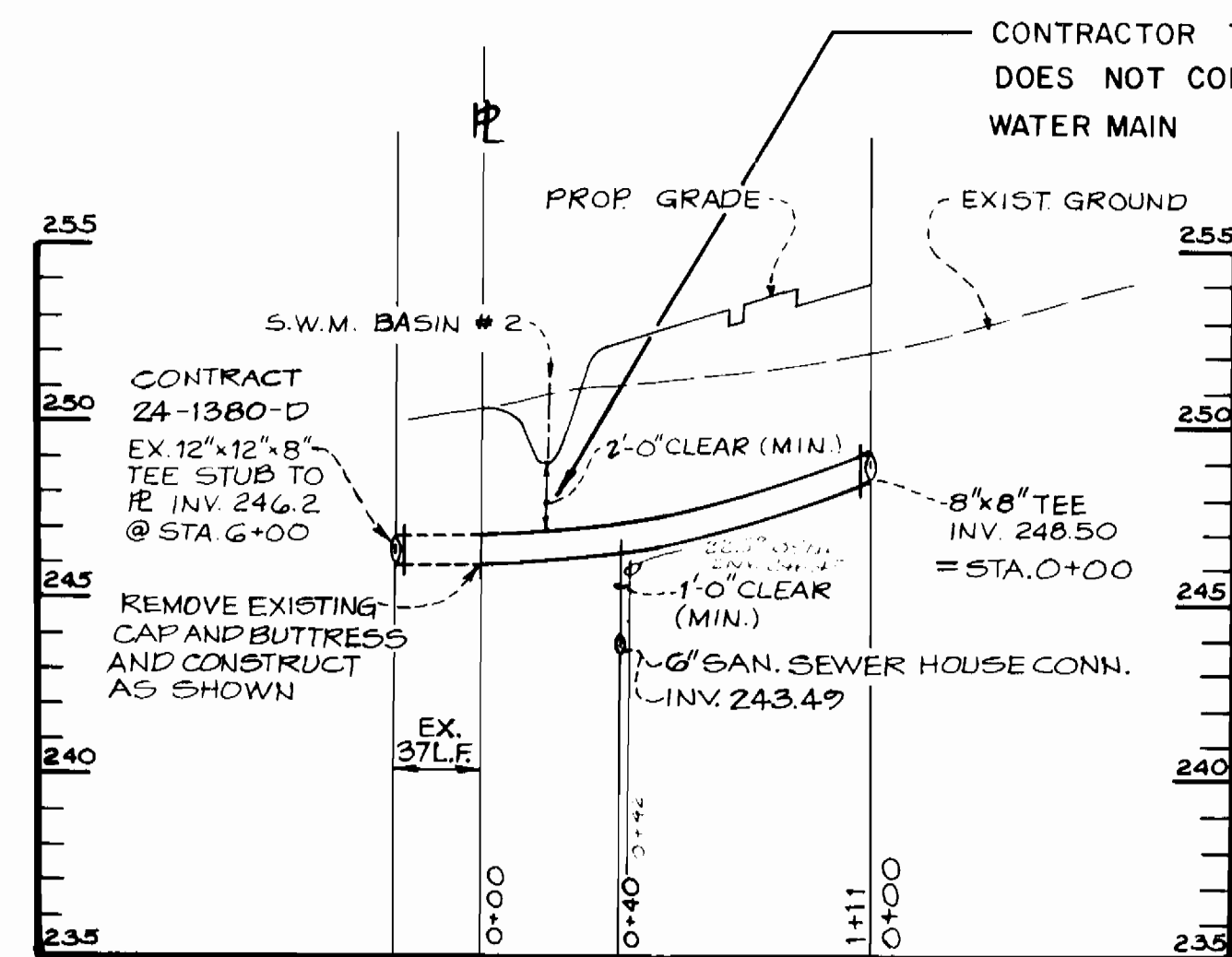


6" FIRE MAIN PROFILES

SCALES: HOR. 1" = 50', VER. 1" = 5'

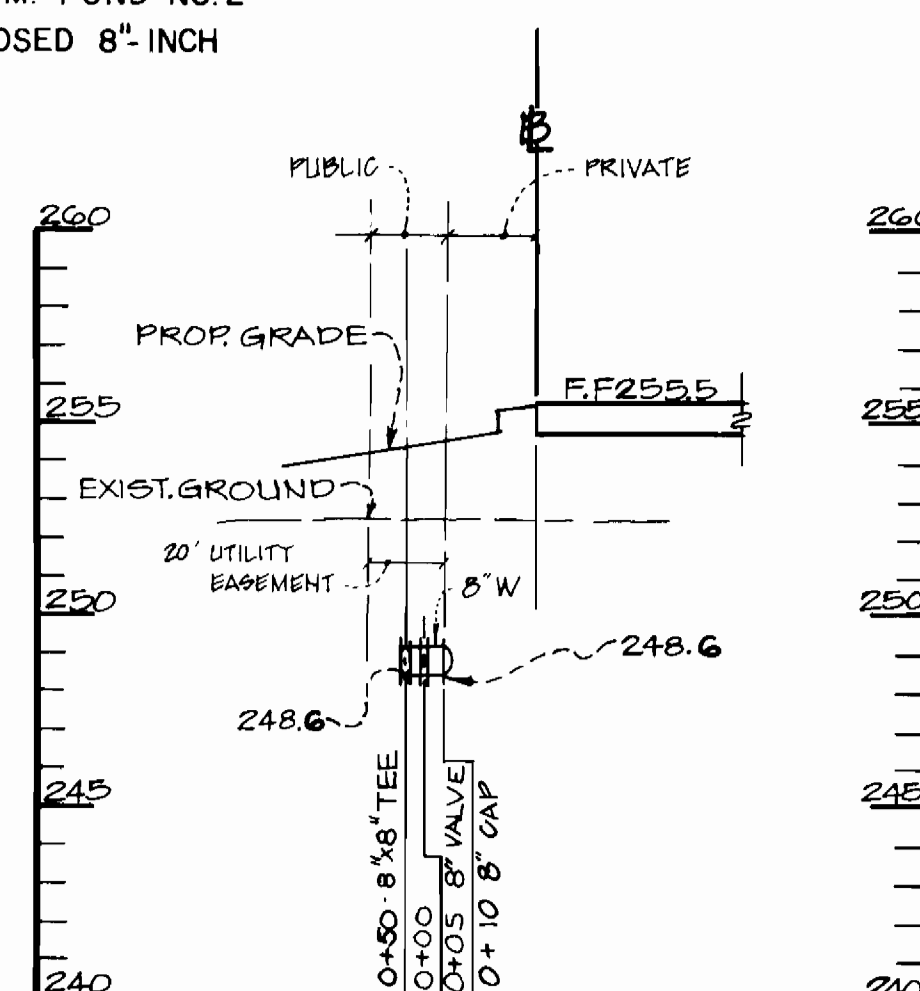
SANITARY SEWER MANHOLE PROFILE

SCALES: HOR. 1" = 50', VER. 1" = 5'

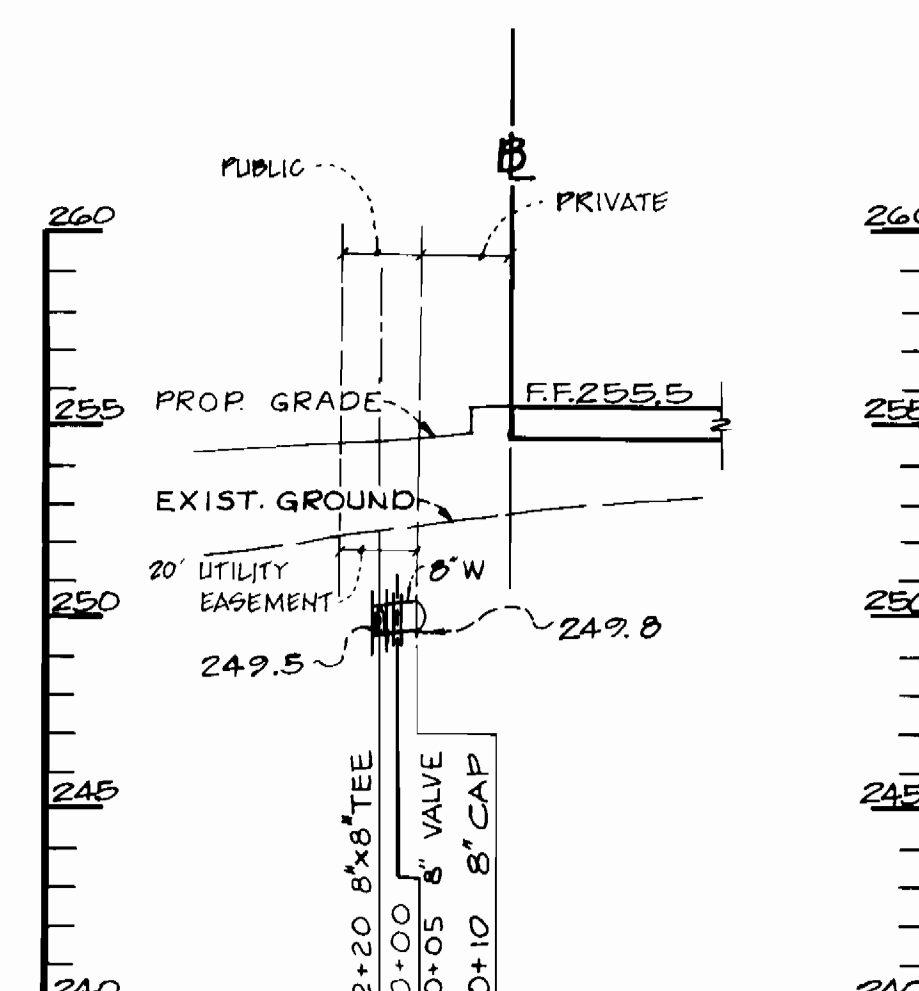


8" WATER MAIN PROFILE

SCALES: HOR. 1" = 50', VERT. 1" = 5'



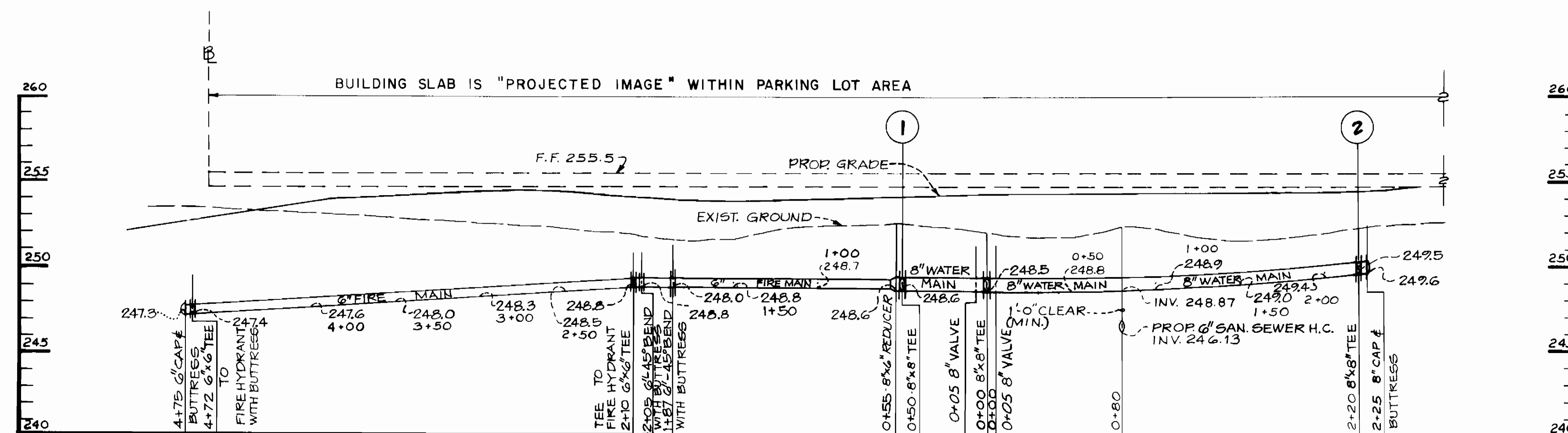
1



2

8" WATER MAIN PROFILES

SCALES: HOR. 1" = 50', VER. 1" = 5'



6" & 8" WATER MAIN PROFILE

SCALES: HOR. 1" = 50', VER. 1" = 5'

REVIEWED FOR HOWARD S.C.D. AND MEETS TECHNICAL REQUIREMENTS.

U.S. SOIL CONSERVATION SERVICE DATE

THIS DEVELOPMENT PLAN IS APPROVED FOR SOIL EROSION AND SEDIMENT CONTROL BY THE HOWARD SOIL CONSERVATION DISTRICT.

HOWARD S.C.D. DATE

SEDIMENT CONTROL MEASURES FOR THIS CONTRACT WILL BE IMPLEMENTED IN ACCORDANCE WITH SECTION 15 OF THE HOWARD COUNTY DESIGN MANUAL, STANDARDS & SPECIFICATIONS FOR SOIL EROSION AND SEDIMENT CONTROL IN DEVELOPING AREAS AND S.D.P. 86-187.

DEPARTMENT OF PUBLIC WORKS
HOWARD COUNTY, MARYLAND

Robert M. Bevington
CHIEF - BUREAU OF UTILITIES
DATE 5-29-86

John E. Patmore
CHIEF - LAND DEVELOPMENT DIVISION
DATE 6-2-86

KIDDE CONSULTANTS INC.
ENGINEERS, PLANNERS & SURVEYORS
1100 WEST STREET / SUITE 100
LAUREL, MD 20707
(301) 792-8086
(301) 953-1821
JOHN E. C. PATMORE PE NO. 8979

John E. Patmore

DES: R.R.S.	
DRN: M.W.G.	
CHK: M.S.S.	
DATE: MAY 19, 1986	
RT/R	5
P.V.	1
BY NO.	
REVISION	CHANGED ELEVATIONS & FIRE MAIN TO WATER SHORTEN 8" WATER LINES, LENGTHEN 6" S.H.C.
DATE	7-23-86 8-20-86

PROFILES OF WATER AND SEWER
CONTRACT NO. **24-1502-D**

JEFFERSON BUSINESS CENTER
WITHIN THE
BALTIMORE WASHINGTON INDUSTRIAL PARK
PARCEL "O" - BLOCK "E" TAX MAP NO. 48
6TH ELECTION DISTRICT HOWARD COUNTY, MD

SCALE AS SHOWN
SHEET 2 OF 2