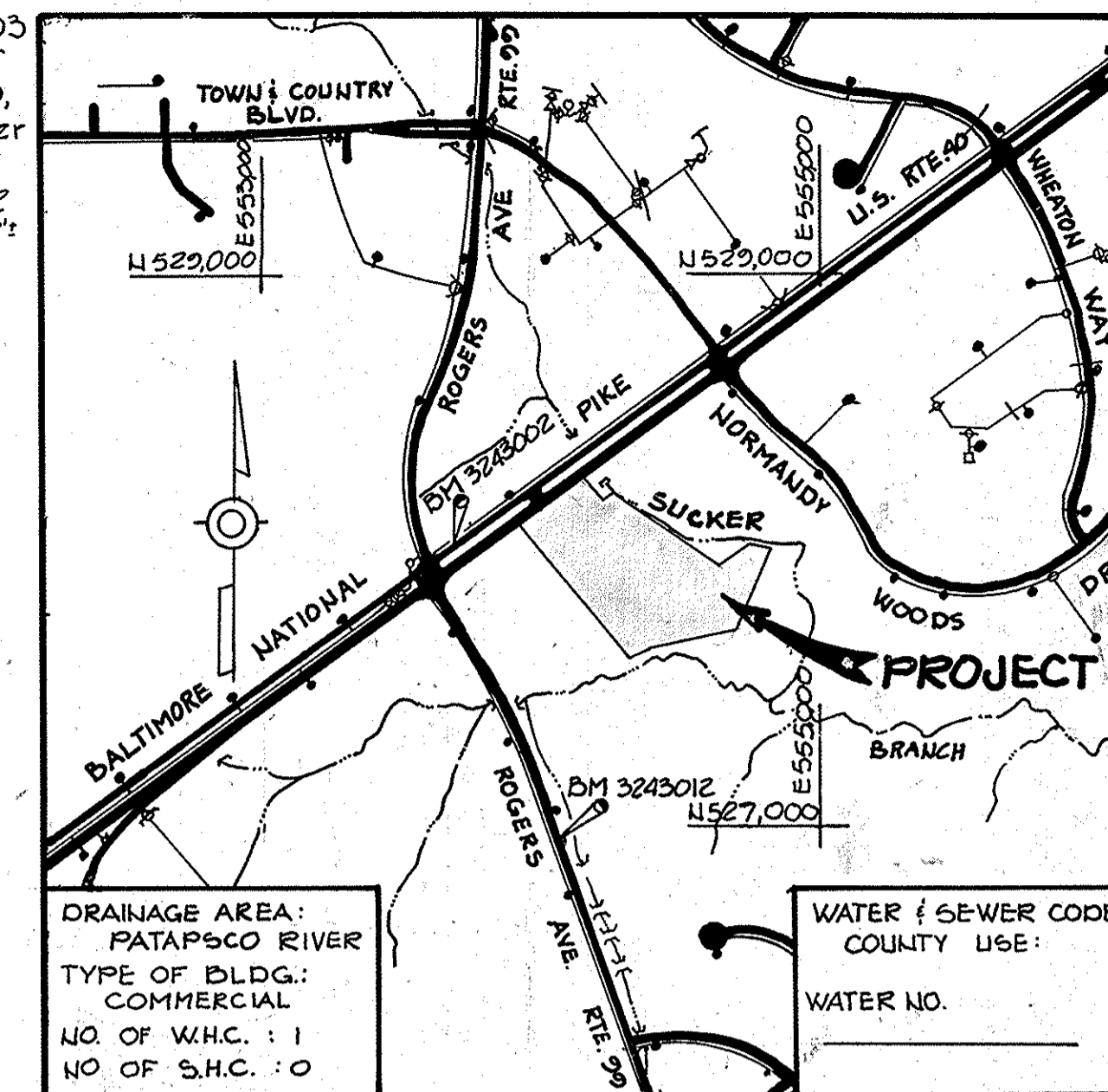


Bench Marks

Ho. Co. 324 5002 ELEV. 354.93
 Conc. Mon. @ surf. 5.5' South of
 left turn lane of U.S. Route 40,
 14' E of east edge of cross over
 to MD Route 29
 Ho. Co. 324 3012 ELEV. 348.72
 1056' South of U.S. Route 40, 27'
 East of E. MD. Route 29

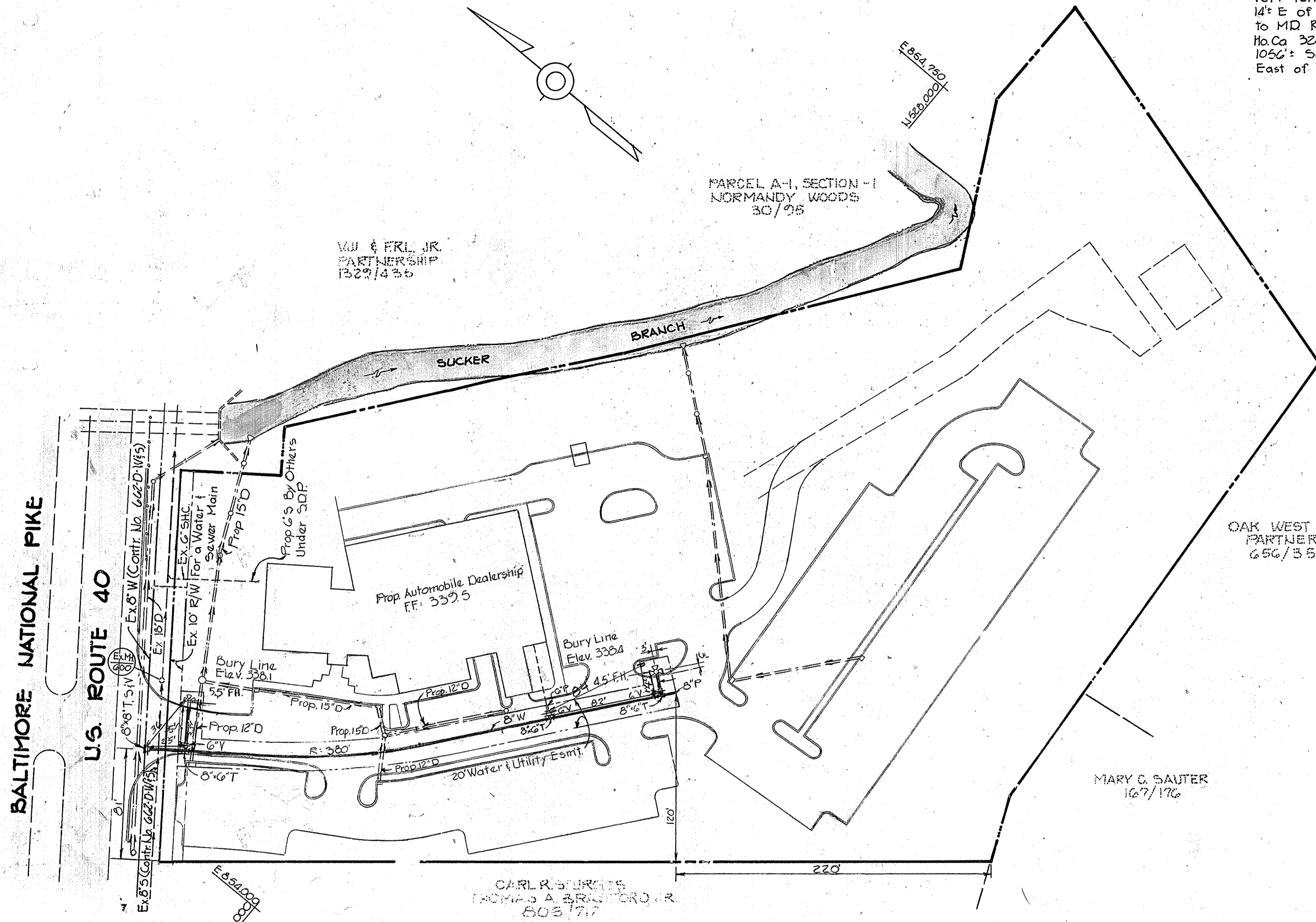


VICINITY MAP

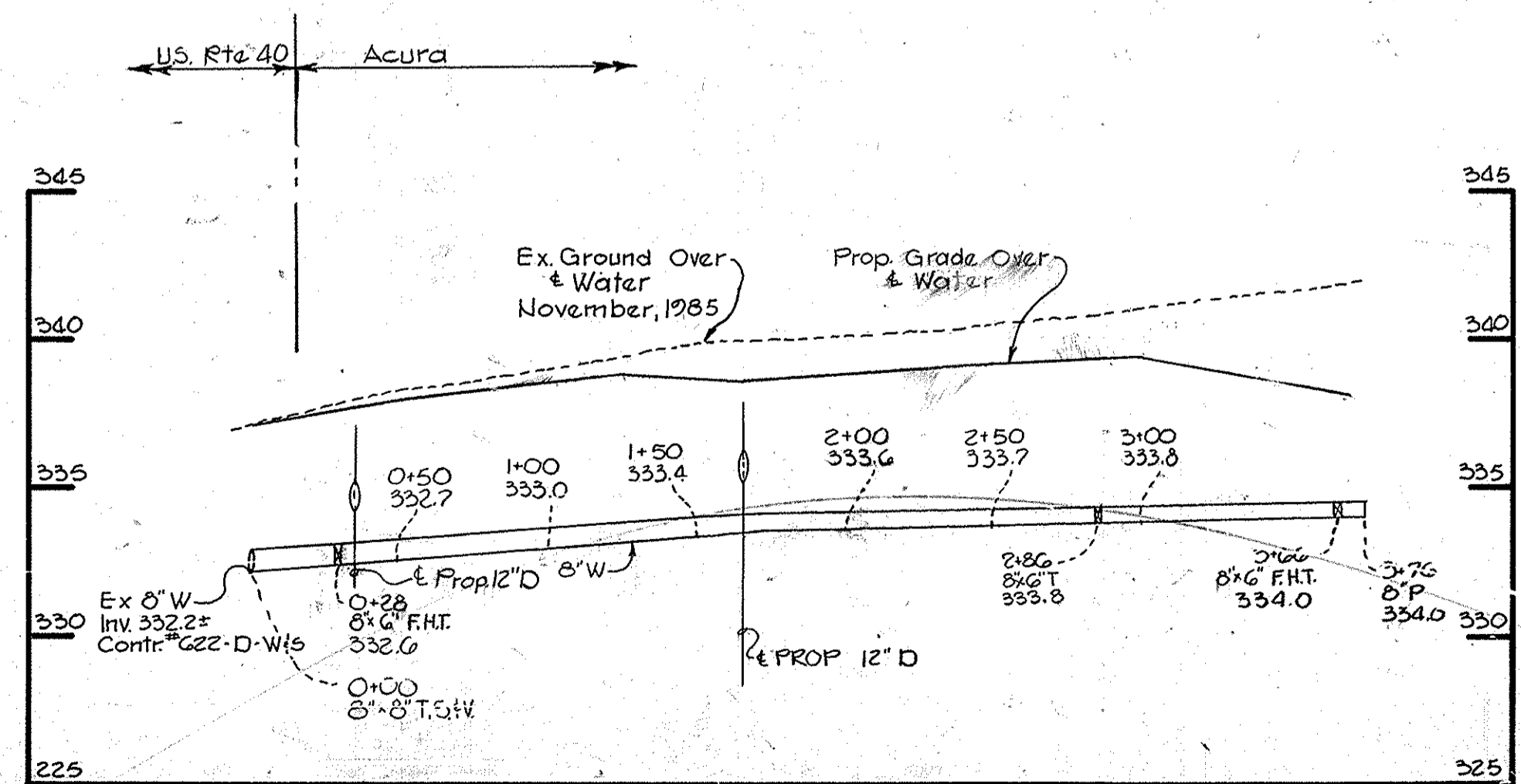
SCALE: 1" = 600'

GENERAL NOTES

1. Approximate location of existing mains are shown. The contractor shall take all necessary precautions to protect existing mains and services and maintain uninterrupted supply. Any damage incurred shall be repaired immediately to the satisfaction of the engineer at the contractor's expense.
2. All horizontal controls are based on Maryland State Coordinates.
3. All vertical controls are based on U.S.G.S. data.
4. All pipe elevations shown are invert Q-elevations.
5. Clear all utilities by a minimum of 6'. Clear all poles by 2'-0" minimum or tunnel as required. The owner has contacted the utility companies and has made arrangements for bracing of poles as shown on the drawings. In the event the contractor's work requires the bracing of additional poles, any cost incurred by the owner for the bracing of additional poles or damages shall be deducted from money owed the contractor. The contractor shall coordinate with the utility companies to schedule the bracing of the poles.
6. For details not shown on the drawing, and for material and construction methods, use Howard County Design Manual, Volume IV, Standard Specification and Details for Construction. The contractor shall have a copy of Volume IV on the job.
7. Where test pits have been made on existing utilities, they are noted by the symbol \square at the location of the test pit. A note or notes containing the results of the test pit or pits is included on the drawing. Existing utilities in the vicinity of the proposed work for which test pits have not been dug shall be located by the contractor two weeks in advance of construction operations at his own expense.
8. Contractor shall notify the following utilities or agencies at least five working days prior to starting work shown on these plans:
 - State Highway Administration - 531-5333
 - Baltimore Gas & Electric Co. - Contractor Services - 561-2585
 - Baltimore Gas & Electric Co. - Under Ground Damage Control - 234-5621
 - Baltimore Gas & Electric Co. - Trouble Shooting - 298-2013
 - Miss Utility - 1-555-0100
 - Colonial Pipeline Co. - 795-1590
 - Bureau of Utilities, Howard County Department of Public Works - 792-2366
9. Trees are to be protected from damage to the maximum extent. Trees located within the construction strip are not to be removed or damaged by the contractor.
10. Contractor shall remove trees, stumps and roots along line of excavation as directed by the engineer. Payment for such removal shall be included in the unit price bid for excavation and backfill.
11. Place regulation "Men Working" and warning signs as required to comply with Maryland State Highway Administration Manual of Traffic Control for Highway Construction and Maintenance Operations.
12. All water mains to be Class 52 DIP unless otherwise noted.
13. Top of all water mains to have a minimum of 3/8" cover unless otherwise noted.
14. Valves adjacent to trees shall be strapped to trees.
15. Block all fittings with concrete.
16. Bury line elevations on fire hydrants shall be set to the elevation shown on the drawings. All fire hydrants shall be strapped and buttressed with concrete in accordance with standard details. Soil around the fire hydrant to be compacted in accordance with Section 1003 & 1006 of the General Requirements for Water & Sewer.
17. All water house connections shall be for an inside meter setting.
18. The contractor shall not operate any water main valves on the existing system.
19. For all copper water house connections utilize flared type fittings only.
20. Profile stations shall be adjusted as necessary to conform to plan dimensions.
21. No pipe shall be laid until lines of excavation have been brought to subgrade.
22. All service clamps are to have stainless steel straps.



PLAN
SCALE: 1" = 50'



PROFILE
SCALE: HORIZ. 1" = 50'
VERT. 1" = 5'

Sediment Control measure for this contract will be implemented in accordance with article 15 of the specifications and as shown on SDP-86-182.

Howard Soil Conservation District:
 Reviewed for Howard Soil Conservation District and meets technical requirements.
James M. Nelson 5-21-86
 U.S. Soils Conservation Service Date
 This plan is approved for soil erosion and sediment control by the Howard Soil Conservation District.
Stephen L. Hamlin 5/21/86
 Howard Soil Conservation District Date

DEPARTMENT OF PUBLIC WORKS
 HOWARD COUNTY, MARYLAND

James M. Nelson 5-21-86
 DIRECTOR OF PUBLIC WORKS DATE

Robert M. Baunier 5-23-86
 CHIEF, BUREAU OF UTILITIES DATE

THE RIEMER GROUP INC.
 3105 HEALTH PARK DRIVE
 FLLICOTT CITY, MARYLAND
 21043



DES: D.A.M.			
DRN: F.D.M.			
CHK: J.K.B.			
DATE: 3-13-86	BY: NO.	REVISION	DATE

**PLAN AND PROFILE
 OF A WATER MAIN**

600' SCALE MAP NO. 10-2-25 BLOCK NO.

ACURA
 2ND ELECTION DISTRICT
 HOWARD COUNTY, MARYLAND
 CONTRACT NO. 44-1484-D

SCALE AS SHOWN
 SHEET 1 OF 1