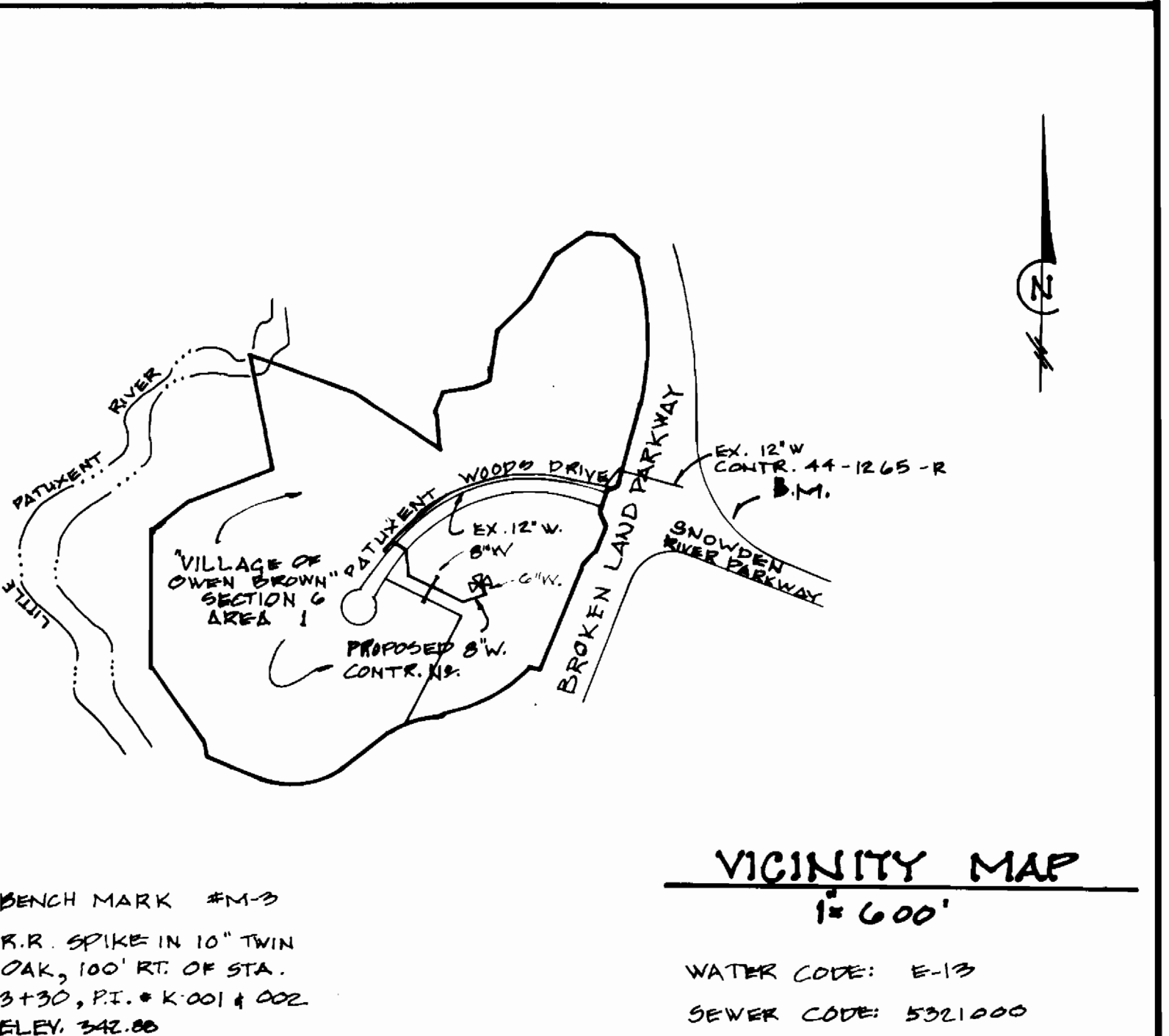


TYPE OF BLDG. = 4 STY. OFFICE BLDG.  
 NUMBER OF LOTS = 1  
 NUMBER OF WATER HOUSE CONNECTIONS = 2  
 NUMBER OF SEWER HOUSE CONNECTIONS = 1  
 DRAINAGE AREA = LITTLE PATUXENT

QUANTITIES			
ITEM	ESTIMATED	AS-BUILT	MATERIAL/SUPPLIER
8" 1/2 BEND	7 EA.	3 EA.	CL 250 / SKIFFIN
8" 1/22 BEND	1 EA.	1 EA.	"
8" D.I.P.	512 LF.	500 LF.	CL 52 / SKIFFIN
8" x 6" CROSS	1 EA.	1 EA.	CL 250 / SKIFFIN
8" VALVE	2 EA.	2 EA.	ANNA C. 500 / 150 PIPE
8" CAP	5 EA.	3 EA.	CL 250 / SKIFFIN
8" x 6" TEE	2 EA.	2 EA.	CL 250 / SKIFFIN
6" D.I.P.	15 LF.	15 LF.	CL 52 / SKIFFIN
6" VALVE	1 EA.	1 EA.	ANNA C. 500 / 150 PIPE
6" FH 5 BURY	1 EA.	1 EA.	ANNA C. 500 / 150 PIPE
6" SEWER	20 LF.	20 LF.	SDR-35 CEMENTATED
8" 1/22 BEND	1 EA.	1 EA.	MURKIN



- GENERAL NOTES**
- APPROXIMATE LOCATION OF EXISTING MAINS ARE SHOWN. THE CONTRACTOR SHALL TAKE ALL NECESSARY PRECAUTIONS TO PROTECT EXISTING MAINS & SERVICES AND MAINTAIN UNINTERRUPTED SUPPLY. ANY DAMAGE INCURRED SHALL BE REPAIRED IMMEDIATELY TO THE SATISFACTION OF THE ENGINEER AT THE CONTRACTOR'S EXPENSE.
  - ALL HORIZONTAL CONTROLS ARE BASED ON MARYLAND STATE COORDINATES.
  - ALL VERTICAL CONTROLS ARE BASED ON U.S.G.S. DATA.
  - ALL PIPE ELEVATIONS SHOWN ARE INVERT ELEVATION.
  - CLEAR ALL UTILITIES BY A MINIMUM OF 6'. CLEAR ALL POLES BY 20' MINIMUM OR TUNNEL AS REQUIRED. THE OWNER HAS CONTACTED THE UTILITIES COMPANIES AND HAS MADE ARRANGEMENTS FOR BRACING OF POLES AS SHOWN ON THE DRAWINGS. IN THE EVENT THE CONTRACTOR'S WORK REQUIRES THE BRACING OF ADDITIONAL POLES, ANY COST INCURRED BY THE OWNER FOR THE BRACING OF ADDITIONAL POLES OR DAMAGES SHALL BE DEDUCTED FROM MONEY OWED THE CONTRACTOR. THE CONTRACTOR SHALL COORDINATE WITH THE UTILITY COMPANIES TO SCHEDULE THE BRACING OF POLES.
  - FOR DETAILS NOT SHOWN ON THE DRAWINGS, AND FOR MATERIALS AND CONSTRUCTION METHODS, USE HOWARD COUNTY DESIGN MANUAL, VOLUME II, STANDARD SPECIFICATIONS AND DETAILS FOR CONSTRUCTION. THE CONTRACTOR SHALL HAVE A COPY OF VOL. II ON THE JOB.
  - WHERE TEST PITS HAVE BEEN MADE ON EXISTING UTILITIES, THEY ARE NOTED BY THE SYMBOL [ ] AT THE LOCATION OF THE TEST PIT. A NOTE OR NOTES CONTAINING THE RESULTS OF THE TEST PIT OR PITS IS INCLUDED ON THE DRAWINGS. EXISTING UTILITIES IN THE VICINITY OF THE PROPOSED WORK FOR WHICH TEST PITS HAVE NOT BEEN DUG SHALL BE LOCATED BY THE CONTRACTOR TWO WEEKS IN ADVANCE OF CONSTRUCTION OPERATION AT HIS OWN EXPENSE.
  - CONTRACTOR SHALL NOTIFY THE FOLLOWING UTILITIES OR AGENCIES AT LEAST FIVE WORKING DAYS BEFORE STARTING WORK SHOWN ON THESE PLANS:
    - STATE HIGHWAY ADMINISTRATION 531-5533
    - BALTIMORE GAS & ELECTRIC CO. UNDERGROUND DAMAGE CONTROL 234-5621
    - BALTIMORE GAS & ELECTRIC CO. TROUBLE SHOOTING 238-9013
    - MISS UTILITY 1-350-0100
    - BALTIMORE GAS & ELECTRIC CO. CONTRACTOR SERVICES 361-2385
    - COLONIAL PIPELINE CO. 795-1300
    - BUREAU OF UTILITIES, HOWARD COUNTY DEPARTMENT OF PUBLIC WORKS 992-2304
  - TREES & SHRUBS ARE TO BE PROTECTED FROM DAMAGE TO MAXIMUM EXTENT. TREES & SHRUBS LOCATED WITHIN THE CONSTRUCTION STRIP ARE NOT TO BE REMOVED OR DAMAGED BY CONTRACTOR.
  - CONTRACTOR SHALL REMOVE TREES, STUMPS, & ROOTS ALONG LINE OF EXCAVATION. PAYMENT FOR SUCH REMOVAL SHALL BE INCLUDED IN THE UNIT PRICE BID FOR CONSTRUCTION OF THE MAIN.
  - ALL WATER MAIN TO BE D.I.P. CLASS 52 UNLESS OTHERWISE NOTED.
  - TOP OF ALL WATER MAINS TO HAVE A MINIMUM OF 3/4" COVER UNLESS OTHERWISE NOTED.
  - VALVES ADJACENT TO TREES SHALL BE STRAPPED TO TREES.
  - ALL FITTINGS SHALL BE BUTTRESSED OR ANCHORED WITH CONCRETE IN ACCORDANCE WITH THE STANDARD DETAILS UNLESS OTHERWISE NOTED.
  - FIRE HYDRANTS SHALL BE SET TO THE BURY LINE ELEVATIONS SHOWN ON THE DRAWINGS. ALL FIRE HYDRANTS SHALL BE STRAPPED & BUTTRESSED WITH CONCRETE IN ACCORDANCE WITH STANDARD DETAILS. SOIL AROUND THE FIRE HYDRANT SHALL BE COMPACTED IN ACCORDANCE WITH SECTION 100B OF THE STANDARD SPECIFICATIONS.
  - THE CONTRACTOR SHALL NOT OPERATE ANY WATER MAIN VALVES ON THE EXISTING WATER SYSTEM.
  - ALL SEWER MAIN SHALL BE C.S.P., R.C.S.P., V.G.P., A.C.P. CLASS 240, OR PVC. UNLESS OTHERWISE NOTED.
  - THE CONTRACTOR SHALL PROVIDE A JOINT IN ALL SEWER MAINS WITHIN 20' OF EXISTING M.H. WALLS.
  - ALL M.H. SHALL BE 42" INSIDE DIAMETER UNLESS OTHERWISE NOTED.
  - MANHOLES SHOWN WITH 12" I.C. WALL ARE BRICK MANHOLES ONLY.
  - MANHOLES DESIGNATED W.T. IN PLAN & PROFILE SHALL HAVE WATERTIGHT FRAME AND COVERS, STANDARD DETAIL C-5.92, WHERE WATERTIGHT MANHOLE FRAME & COVER IS USED, SET TOP OF FRAME @ 1 1/2" ABOVE FINISHED GRADE UNLESS OTHERWISE NOTED ON DRAWINGS.
  - HOUSE(S) WITH THE SYMBOL "S.N.S." INDICATES THAT CELLAR CANNOT BE SERVED.
  - ALL WATER HOUSE CONNECTIONS SHALL BE INSIDE SETTINGS UNLESS OTHERWISE NOTED.
  - THE SERVICE CLAMPS ARE TO HAVE STAINLESS STEEL STRAPES

REVIEWED FOR HOWARD SOIL CONSERVATION DISTRICT AND METRO TECHNICAL REQUIREMENTS  
 SIGNATURE: [Signature] DATE: 5-2-86  
 U.S. SOIL CONSERVATION SERVICE

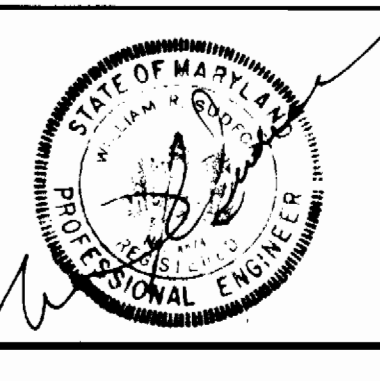
THIS DEVELOPMENT PLAN IS APPROVED FOR SOIL EROSION AND SEDIMENT CONTROL BY HOWARD SOIL CONSERVATION DISTRICT.  
 APPROVED: [Signature] DATE: 5/2/86  
 HOWARD COUNTY SOIL CONSERVATION SERVICE

SEDIMENT CONTROL MEASURES FOR THIS CONTRACT WILL BE IMPLEMENTED IN ACCORDANCE WITH ARTICLE 15 OF THE STANDARD SPECIFICATION AND S.P.R. 86-1000

DEPARTMENT OF PUBLIC WORKS  
 HOWARD COUNTY, MARYLAND

DIRECTOR OF PUBLIC WORKS: [Signature] DATE: 5-12-86  
 CHIEF, BUREAU OF UTILITIES: [Signature] DATE: 5-12-86  
 CHIEF, BUREAU OF ENGINEERING: [Signature] DATE: 5-12-86

WILLIAM R. SUDECK AND ASSOCIATES INC.  
 112 SOUTH MAIN STREET  
 BEL AIR, MARYLAND 21014  
 846-3555 879-4353



PBS: RNR			
DRN: KMG			
CHR: RNR			
DATE: 2/10/80	BY NO.	REVISION	DATE

PLAN & PROFILE FOR  
 PROPOSED WATER MAIN  
 CONTRACT NO. - 24-1473-D

VILLAGE OF OWEN BROWN  
 SECTION "G" AREA "1" PARCEL "D-1"  
 HOWARD COUNTY, MARYLAND ELECTION DISTRICT "G"  
 TAX MAP #42  
 JANUARY 31, 1986

SCALE: PLAN: 1"=50'  
 PROFILE: 1"=20'  
 SHEET 1 OF 1