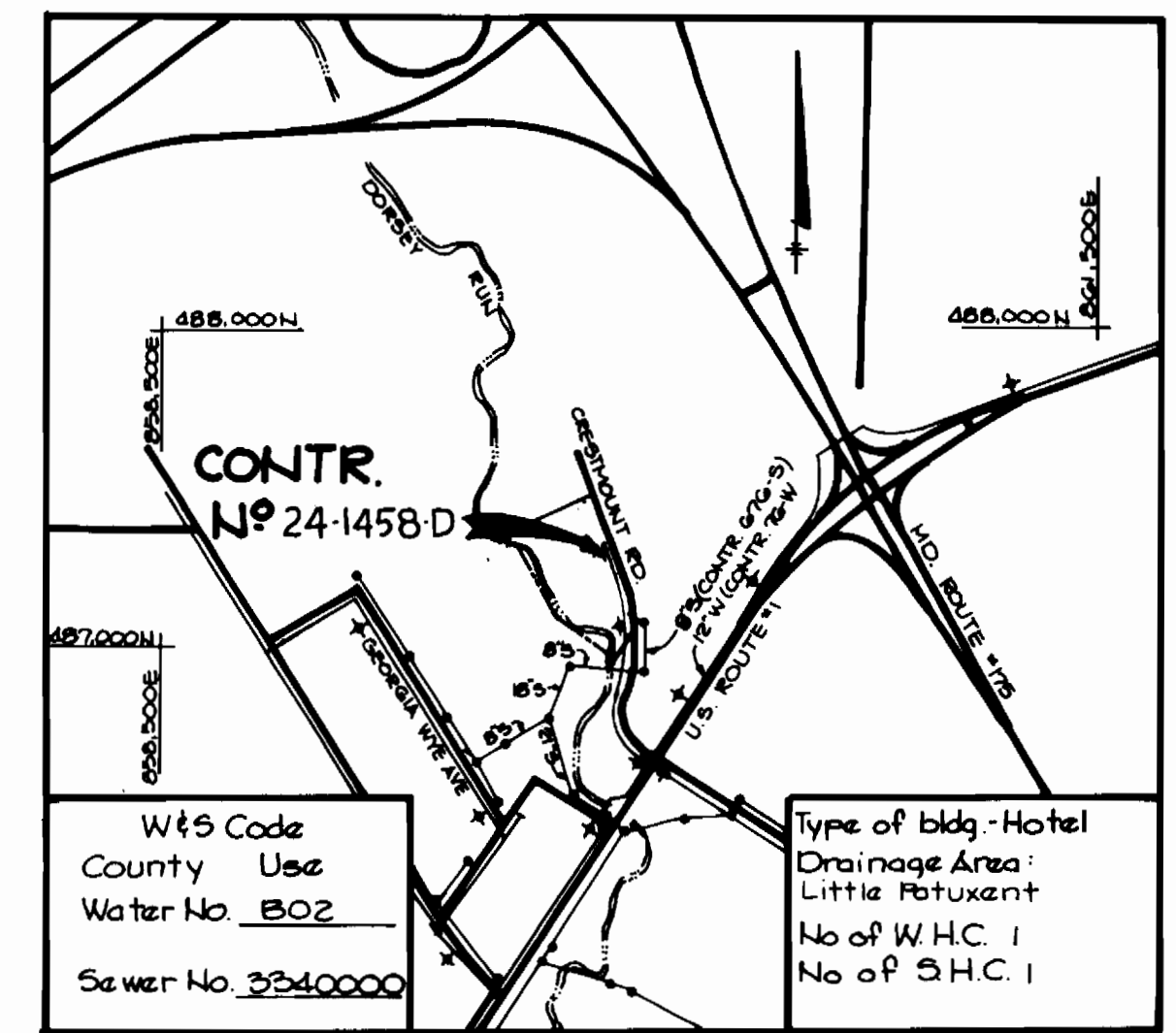
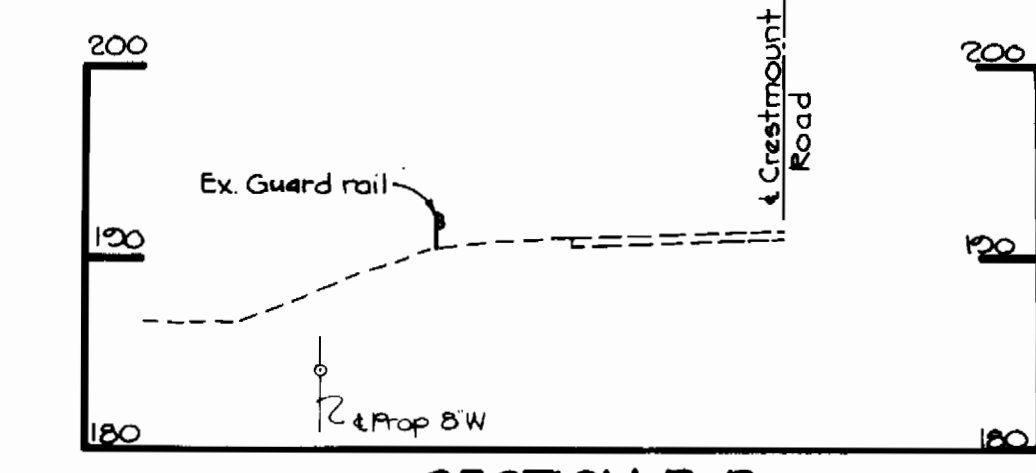


**BENCH MARKS**

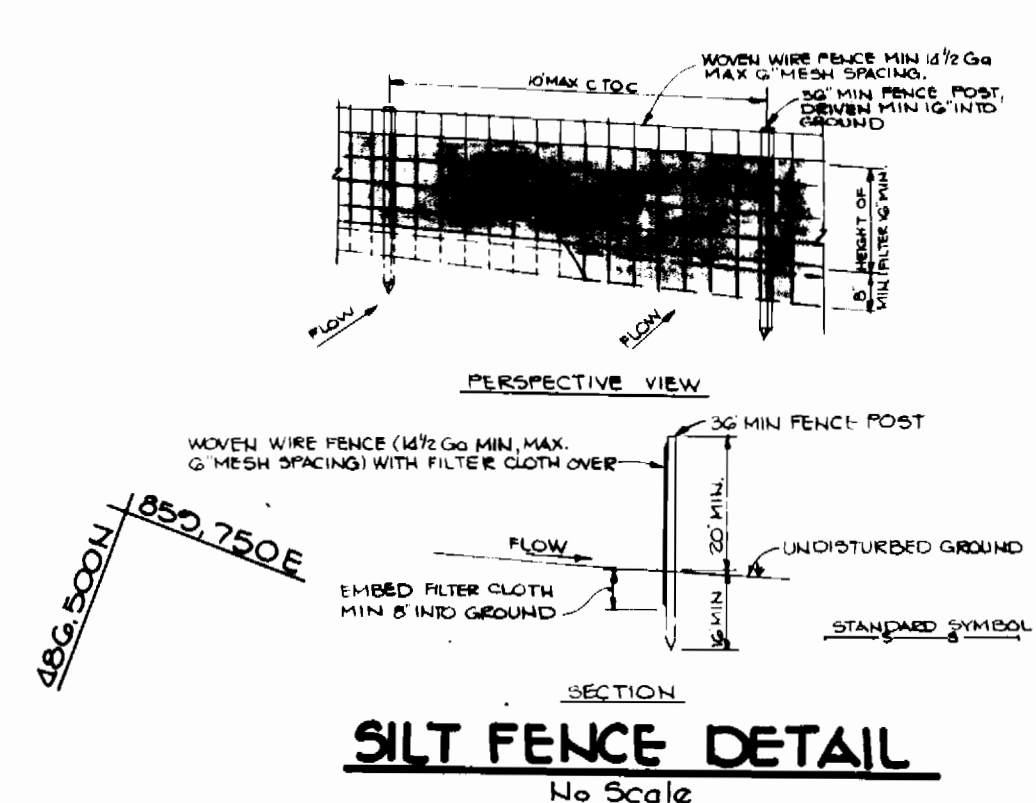
B.M. #1	Elev. 213.70
Railroad spike in B.G. & E. Pole #521608	
B.M. #2	Elev. 220.50
Railroad spike in B.G. & E. Pole #519666	



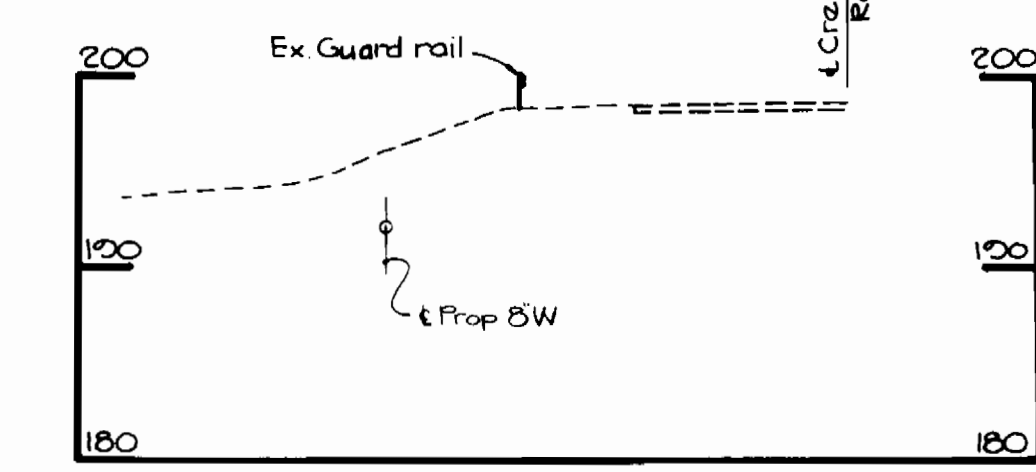
**PLAN**  
Scale 1"=50'



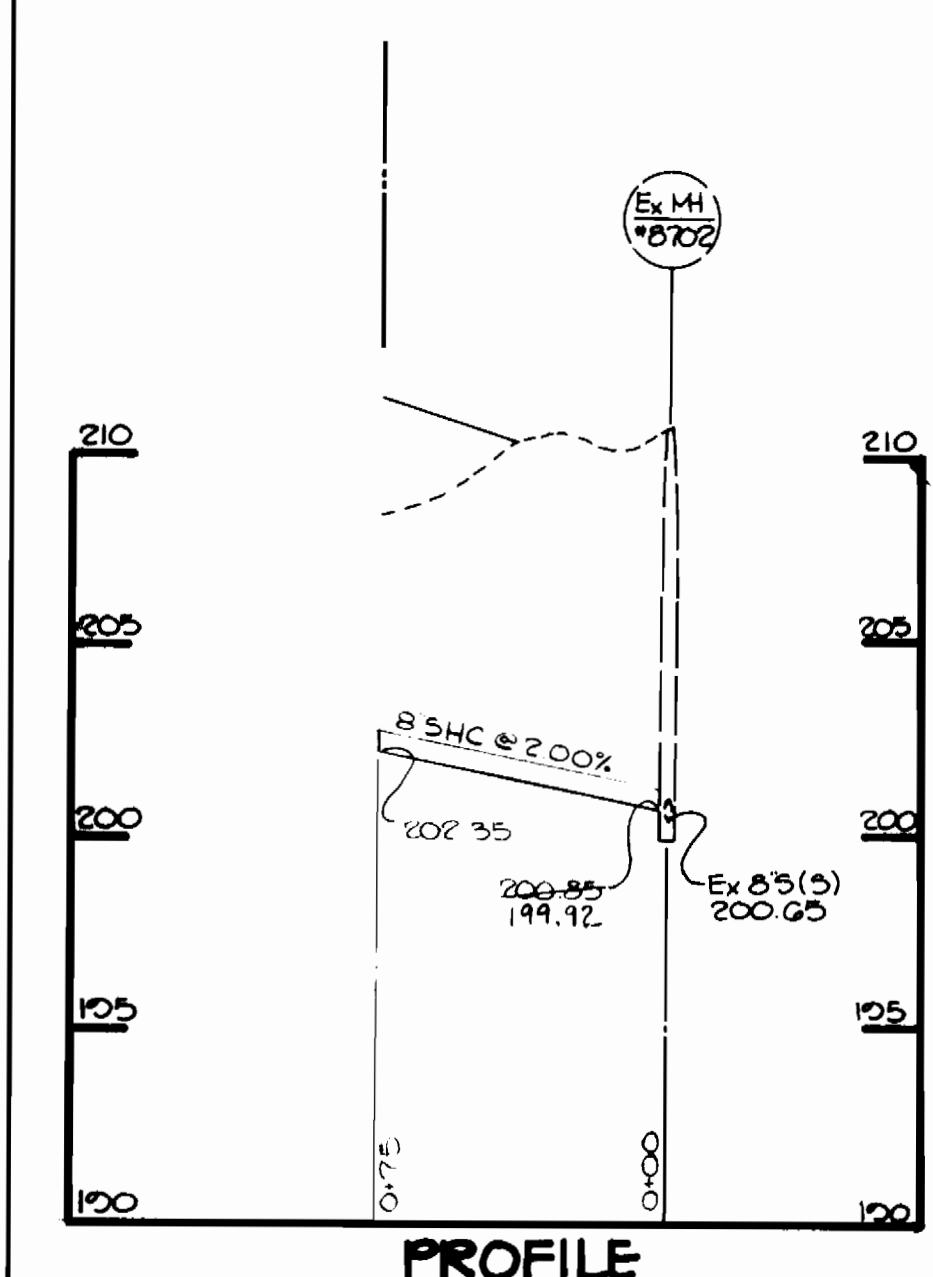
**SECTION B-B**  
Scale: Horiz 1"=10', Vert 1"=10'



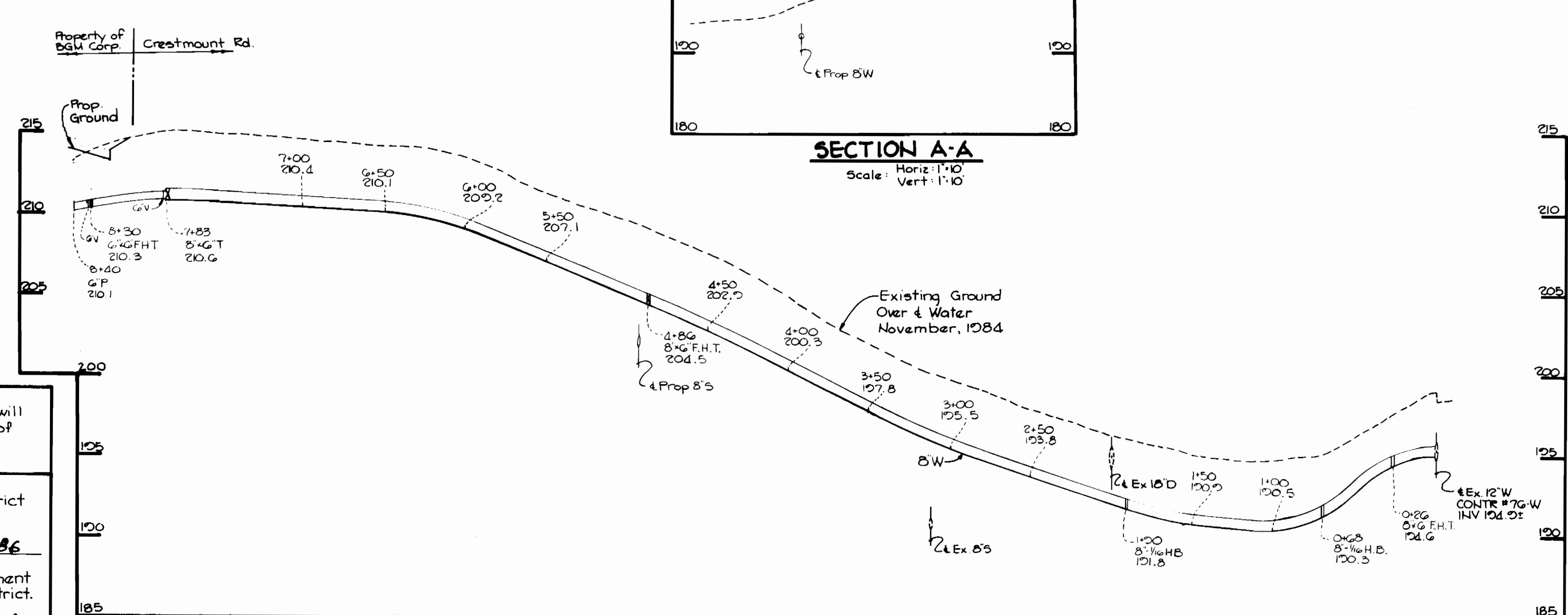
**SILT FENCE DETAIL**  
No Scale



**SECTION A-A**  
Scale: Horiz 1"=10', Vert 1"=10'



**PROFILE**  
Scale: Horiz 1"=50', Vert 1"=5'



**PROFILE** Scale: Horiz 1"=50', Vert 1"=5'

- GENERAL NOTES**
- Approximate location of existing mains are shown. The contractor shall take all necessary precautions to protect existing mains and services and maintain uninterrupted supply. Any damage incurred shall be repaired immediately to the satisfaction of the Engineer at the Contractor's expense.
  - All horizontal controls are based on Maryland State Coordinates.
  - All vertical controls are based on U.S.G.S. data.
  - All pipe elevations shown are invert elevations.
  - Clear all utilities by a minimum of 6'. Clear all poles by 2'-0" minimum or tunnel as required. The owner has contacted the utility companies and has made arrangements for bracing of poles as shown on the drawings. In the event the contractor's work requires the bracing of additional poles, any cost incurred by the owner for the bracing of additional poles or damages shall be deducted from money owed the contractor. The contractor shall coordinate with the utility companies to schedule the bracing of the poles.
  - For details not shown on the drawings, and for materials and construction methods, use Howard County Design Manual, Volume IV, Standard Specifications and Details for Construction. The contractor shall have a copy of Volume IV on the job.
  - Where test pits have been made on existing utilities, they are noted by the symbol  $\square$  at the location of the test pit. A note or notes containing the results of the test pit or pits is included on the drawings. Existing utilities in the vicinity of the proposed work for which test pits have not been dug shall be located by the contractor two weeks in advance of construction operations at his own expense.
  - Contractor shall notify the following utilities or agencies at least five working days before starting work shown on these plans:
 

State Highway Administration	531-5533
Baltimore Gas & Electric Co - Contractor Services	561-2585
Baltimore Gas & Electric Co Under Ground Damage Control	231-5621
Baltimore Gas & Electric Co Trouble Shooting	208-0013
Miss Utility	1-800-257-1777
Colonial Pipeline Co.	705-1900
Bureau of Utilities, Howard County Department of Public Works	502-2366
  - Trees are to be protected from damage to maximum extent. Trees located within the construction strip are not to be removed or damaged by the contractor.
  - Contractor shall remove trees, stumps and roots along line of excavation as directed by the Engineer. Payment for such removal shall be included in the unit price bid for excavation and backfill.
  - Place regulation 'Men Working' and warning signs as required to comply with Maryland State Highway Administration Manual of Traffic Control for Highway Construction and Maintenance Operations.
  - All water mains to be D.I.P. unless otherwise noted.
  - Top of all water mains to have a minimum 3/4" cover unless otherwise noted.
  - Valves adjacent to trees shall be strapped to trees.
  - Block all fittings with concrete.
  - Bury line elevations on fire hydrants shall be set to the elevations shown on the drawings. All fire hydrants shall be strapped and buttressed with concrete in accordance with standard details. Soil around the fire hydrant to be compacted in accordance with Section 1008 & 1008 of the General Requirements for Water and Sewer.
  - All water house connections shall be for an inside meter setting.
  - The contractor shall not operate any water main valves on the existing system.
  - For all copper water house connections utilize Flared type fittings only.
  - All sewer mains shall be C.S.P.X., V.C.P.X., PVC or A.C.P. Class 2400 unless otherwise noted.
  - The contractor shall provide a joint in all sewer mains within 2'-0" of exterior manhole wall.
  - All manholes shall be 4'-0" inside diameter, unless otherwise noted.
  - Manholes designated W.T. in plan and profile shall have watertight frame and covers, Standard Detail G552 Volume IV. Where watertight manhole frame and cover is used, set top of frame 1'-6" above finished grade.
  - Manholes shown with 12" and 16" walls are brick manholes only.
  - House(s) with the symbol 'C.N.S.' indicates the cellar can not be served.
  - All water house connections shall have a minimum vertical clearance of 12" above all sanitary sewer crossings.
  - All sanitary sewer house connections shall have a minimum vertical clearance of 12" below all water main crossings.
  - Profile stations shall be adjusted as necessary to conform to plan dimensions.
  - No pipe shall be laid until lines of excavation have been brought to subgrade.

ITEM	QUANTITIES		MATERIAL SUPPLIER
	ESTIMATED	AS BUILT	
8" Water	783 LF	724 LF	MULLER PIPE CO.
6" Water	27 LF	120 LF	MULLER PIPE CO.
6" Valve (excl. F.H.V's)	1	1	MULLER CO.
Fire Hydrants	3	2	MULLER CO.
8" Sewer	75	82.2	NATIONAL PIPE CO.
12" S.T.S. IV	1	1	MULLER CO.
FIRE HYDRANT	1	1	U.S. PIPE & FOUNDRY

Sediment Control measures for this contract will be implemented in accordance with article 15 of the specifications and as shown on this plan and SDP-86-123

Howard Soil Conservation District:  
Reviewed for Howard Soil Conservation District and meets technical requirements.

*John M. Neuber* 5-8-86  
U.S. Soil Conservation Service  
This plan is approved for soil erosion and sediment control by the Howard Soil Conservation District.

*Arthur E. Muegge* 5/8/86  
Howard Soil Conservation District

<b>DEPARTMENT OF PUBLIC WORKS</b> HOWARD COUNTY, MARYLAND Director of Public Works: <i>John F. Neuber</i> 5-22-86 Chief Land Development Division: <i>Arthur E. Muegge</i> 5-20-86	<b>THE RIEMER GROUP INC.</b> 3105 HEALTH PARK DRIVE ELLICOTT CITY, MARYLAND 21043 Chief, Bureau of Engineering: <i>William J. Ryan</i> 5-22-86 Chief, Bureau of Utilities: <i>Robert W. Reimer</i> 5-20-86	DES: D.A.M. DRN: D.A.M. CHK: J.D.P. DATE: 5-1-86	PLAN AND PROFILE OF A WATER AND SEWER MAIN 600' SCALE MAP NO. 43 BLOCK NO.	SUSSE CHALET HOTEL 6TH ELECTION DISTRICT HOWARD COUNTY MARYLAND CONTRACT NO. 24-1458-D	SCALE AS SHOWN SHEET 1 OF 1
---	--	---	--	---	--------------------------------