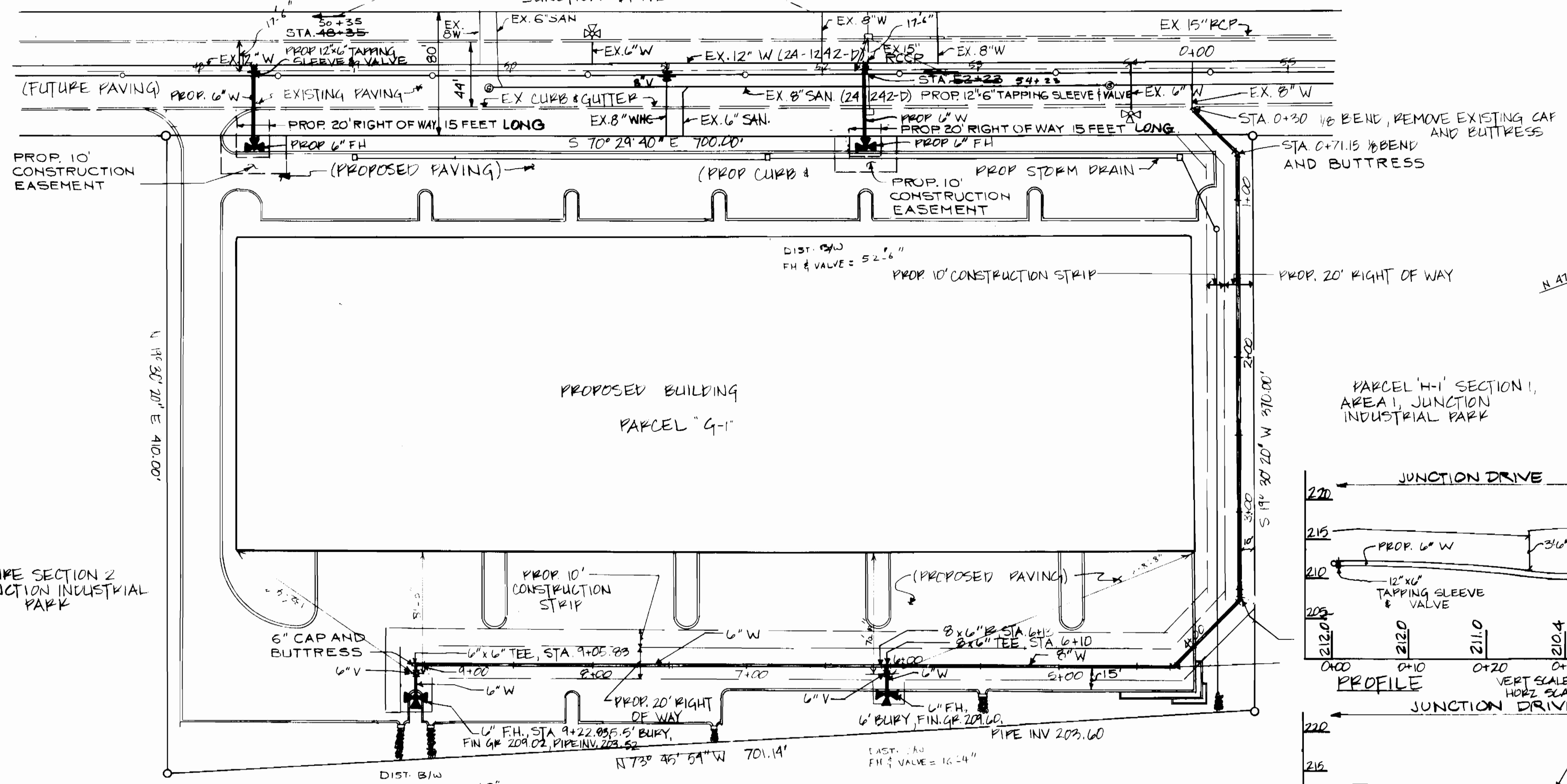


FH'S RELOCATED 2' AS SHOWN TO AVOID BELLS

DIST. B/W FH & VALVE = 52'-6"

PARCEL 'C-2' SECTION 1, AREA 1
JUNCTION INDUSTRIAL PARK

JUNCTION DRIVE



PROPOSED BUILDING
PARCEL 'G-1'

PLAN

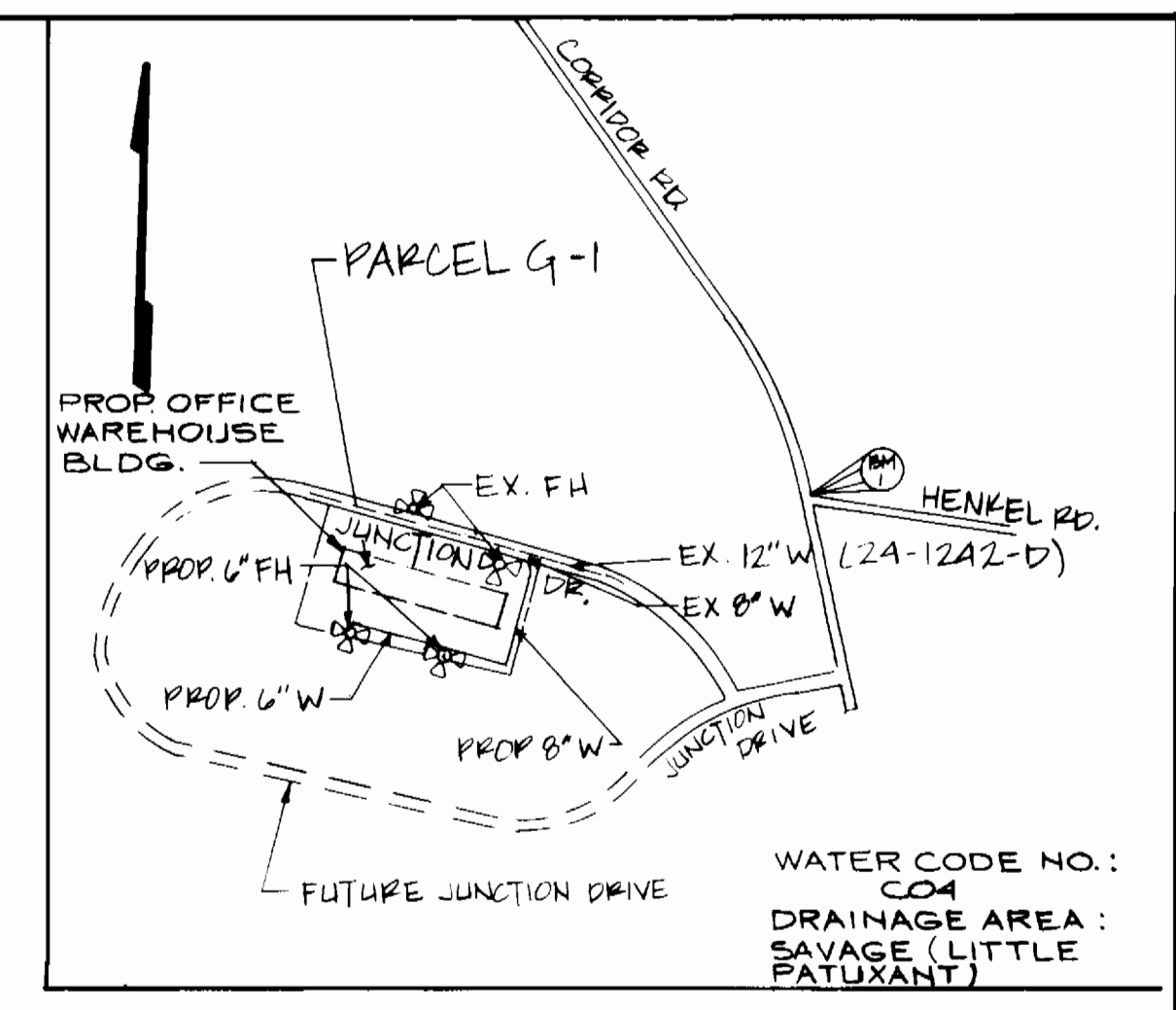
SCALE 1"=50'

FUTURE SECTION 2
JUNCTION INDUSTRIAL PARK

QUANTITIES			
NO.	ITEMS	PROP.	AS BUILT
1	6" WATER	432 LF	432 LF, 5' RIFFIN
2	8" WATER	503 LF	503 LF, 3' GR RIFFIN
3	6" FH VALVE W/ VALVE BOX	2 EA.	2 EA
4	6" F.H.	4 EA.	4 EA
5	6" CAP	1 EA	1 EA
6	1/2" BEND (8")	4 EA	4 EA
7	8" x 6" TEE	1 EA	1 EA
8	8" x 6" REDUCER	1 EA	1 EA
9	6" x 6" TEE	1 EA	1 EA
10	12" x 6" TAPPING SLEEVE & VALVE	2 EA	2 EA, 1/2" BURY VALVE

BENCH MARK DATA

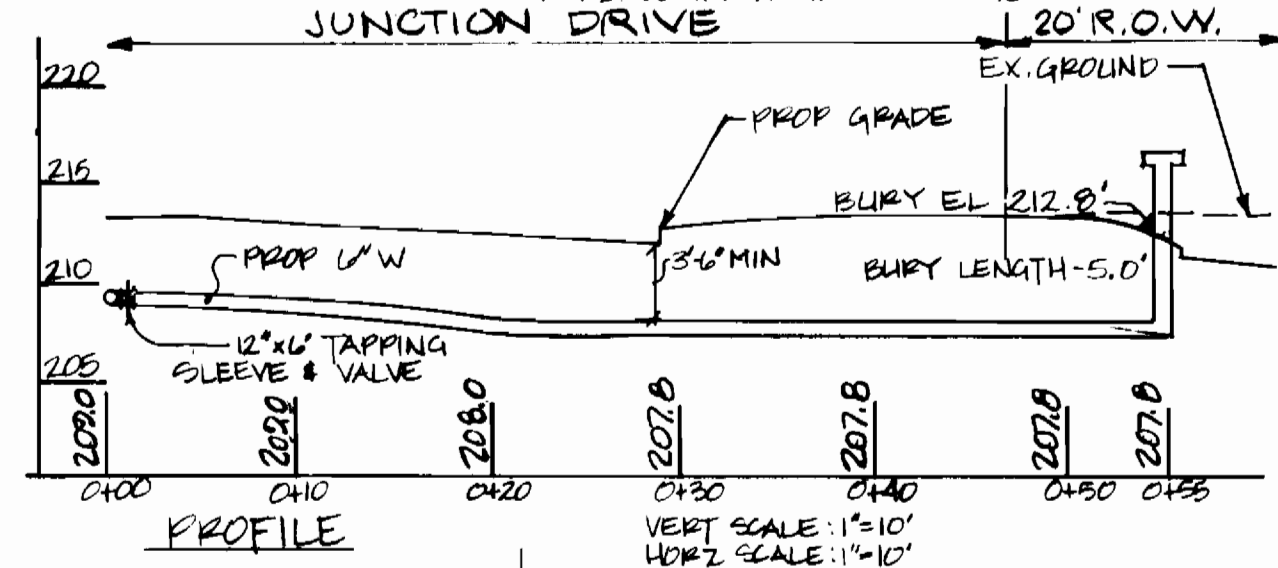
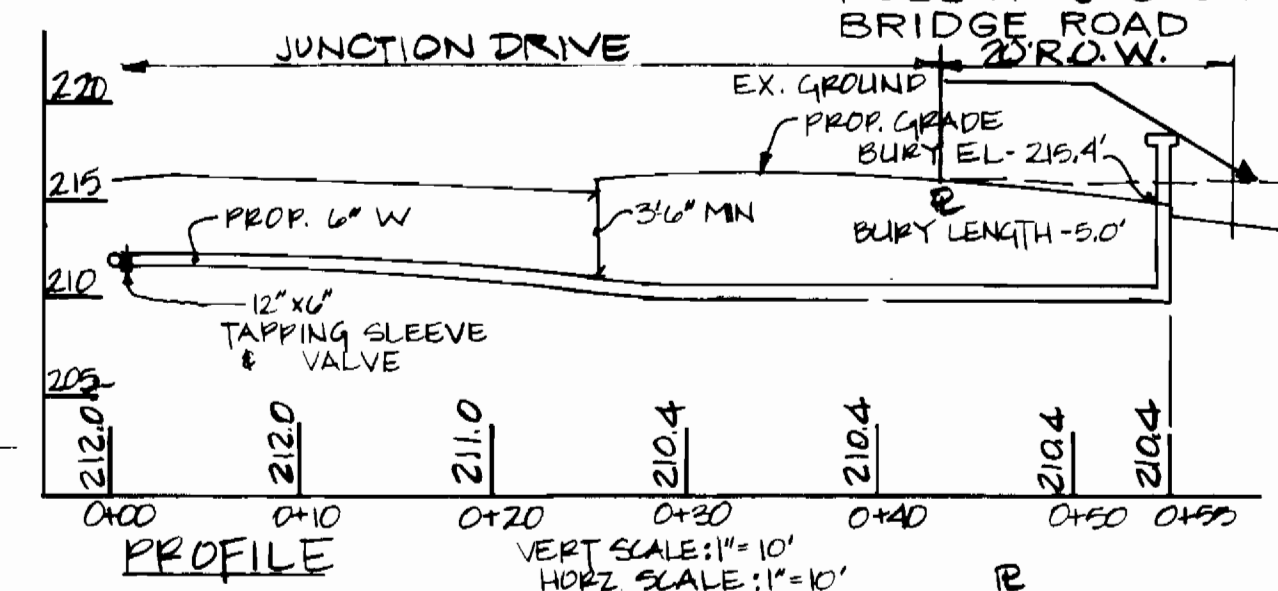
BM NO. 1 ELEV. 210.71
D-CUT END CONC. CURB, N SIDE CORRIDOR RD.
@ INTERSECTION OF CORRIDOR RD AND HENKEL RD.
BM NO. 24 ELEV. 159.19
POLE NO. J-5 ON NORTH SIDE OF BROCK BRIDGE ROAD



VICINITY MAP

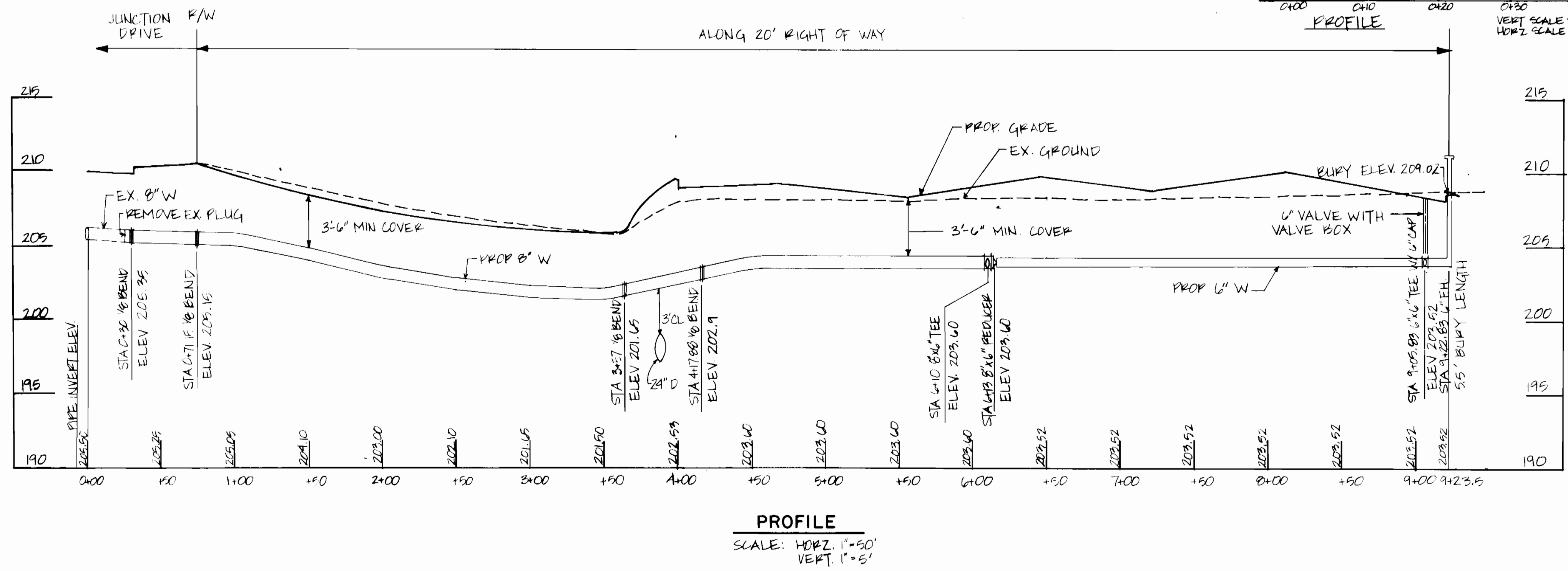
SCALE: 1"=600'

PARCEL 'H-1' SECTION 1,
AREA 1, JUNCTION
INDUSTRIAL PARK



GENERAL NOTES

- APPROXIMATE LOCATION OF EXISTING UTILITIES ARE SHOWN. THE CONTRACTOR SHALL TAKE ALL NECESSARY PRECAUTIONS TO PROTECT EXISTING UTILITIES AND SERVICE AND TO MAINTAIN UNINTERRUPTED SERVICE. ANY DAMAGE INCURRED DUE TO THE CONTRACTORS OPERATION SHALL BE REPAIRED IMMEDIATELY AT THE CONTRACTORS EXPENSE.
- ALL PIPE ELEVATIONS ARE INVERT ELEVATIONS.
- THE CONTRACTOR SHALL NOTIFY "MISS UTILITY 1-800-257-7777" BUREAU OF UTILITIES (992-2366) AT LEAST 3 DAYS PRIOR TO BEGINNING OF ANY CONSTRUCTION SHOWN HEREON.
- FOR ALL STANDARD DETAILS SEE STANDARDS BOUND IN SPECIFICATIONS
- CLEAR ALL UTILITIES BY A MINIMUM OF 6". CLEAR ALL POLES BY A MINIMUM OF 2'-0" OR TUNNEL AS REQUIRED. ANY COSTS INCURRED BY THE CONTRACTOR FOR TUNNELING OR BRACING POLES SHALL BE INCLUDED IN THE UNIT PRICE BID FOR EXCAVATION.
- ALL WATER LINES TO HAVE A MINIMUM OF 3'-6" COVER UNLESS OTHERWISE NOTED.
- BLOCK ALL FITTINGS WITH CONCRETE, STANDARDS BOUND IN SPECIFICATIONS
- BURY LINE ELEVATIONS ON FIRE HYDRANTS SHALL BE SET TO THE ELEVATIONS SHOWN ON THE DRAWING. SOIL AROUND HYDRANTS TO BE COMPACTED IN ACCORDANCE WITH SECTION 1003 OF THE STANDARD SPECIFICATION.
- ALL FIRE HYDRANTS SHALL BE STRAPPED TO THE TEE AND SHALL BE BUTTRESSED WITH CONCRETE IN ACCORDANCE WITH THE STANDARD DETAILS.
- ALL HORIZONTAL AND VERTICAL CONTROLS ARE BASED ON MD STATE DATUM
- ALL WATER MAINS SHALL BE D.I.P. UNLESS OTHERWISE NOTED, CL52
- CONTRACTOR SHALL NOTIFY BALTIMORE GAS AND ELECTRIC CO. 72 HOURS PRIOR TO ANY CONSTRUCTION IN THE VICINITY OF ANY GAS AND ELECTRIC FACILITIES BY CALLING 539-3000 EXT. 69.
- TREES ARE TO BE PROTECTED FROM DAMAGE TO THE MAXIMUM EXTENT. ALL TREES LOCATED WITHIN THE CONSTRUCTION AREA ARE NOT TO BE REMOVED OR DAMAGED BY THE CONTRACTOR.
- ALL VALVES SHALL BE STRAPPED TO TEES IN ACCORDANCE WITH STANDARD DETAILS
- THE CONTRACTOR SHALL REMOVE TREES, STUMPS AND ROOTS ALONG LINE OF EXCAVATION AS DIRECTED BY THE ENGINEER. PAYMENT FOR SUCH REMOVAL SHALL BE INCLUDED IN THE UNIT PRICE BID FOR EXCAVATION AND BACKFILL FOR WATER MAINS.
- PLACE REGULATION "MEN WORKING" AND WARNING SIGNS AS REQUIRED TO COMPLY WITH MARYLAND STATE HIGHWAY ADMINISTRATION MANUAL OF TRAFFIC CONTROL FOR HIGHWAY CONSTRUCTION AND MAINTENANCE OPERATIONS.
- THE CONTRACTOR SHALL NOTIFY THE C&P TELEPHONE CO. PRIOR TO ANY CONSTRUCTION IN BALTIMORE.
- SEDIMENT CONTROL SHALL BE ACCOMPLISHED IN ACCORDANCE WITH SITE DEVELOPMENT PLAN SDP-86-135 AND ARTICLES OF THE HOWARD COUNTY DESIGN MANUAL VOL. IX STANDARD SPECIFICATIONS.



PROFILE

SCALE: HORIZ. 1"=50'
VERT. 1"=5'

THIS DEVELOPMENT PLAN IS APPROVED FOR SOIL EROSION AND SEDIMENT CONTROL BY THE HOWARD COUNTY SOIL CONSERVATION DISTRICT

REVIEWED FOR HOWARD SOIL CONSERVATION DISTRICT AND MEETS TECHNICAL REQUIREMENTS

APPROVED: *[Signature]* DATE: 3/14/86
HOWARD CO. SOIL CONSERVATION DISTRICT

APPROVED: *[Signature]* DATE: 3/15/86
US SOIL CONSERVATION SERVICE

DEPARTMENT OF PUBLIC WORKS
HOWARD COUNTY, MARYLAND

[Signature] 3-14-86
DIRECTOR - BUREAU OF ENGINEERING

[Signature] 3-11-86
CHIEF - BUREAU OF UTILITIES

[Signature] 3-13-86
CHIEF - LAND DEVELOPMENT DIVISION - DATE

HITNEY
AILEY
OX
AGNANI

CONSULTING ENGINEERS
1850 York Road
Timonium Md 21093
301-252-6060



DES. P.D.	
DRN. R.B.	
CHK. P.D.	
DATE: 2/25/86	
BY NO.	
REVISION	
DATE	

PLAN OF WATER MAIN
CONTRACT NO. 44-1453-D

600' SCALE MAP NO. 48 BLOCK NO. 19

WATER MAIN EXTENSION
PARCEL 'G-1'
JUNCTION INDUSTRIAL PARK SECTION 1
ELECTION DISTRICT GILFORD NO. 6
HOWARD COUNTY, MARYLAND

SCALE AS SHOWN
SHEET 1 OF 1

AS-BUILT
7/7/86