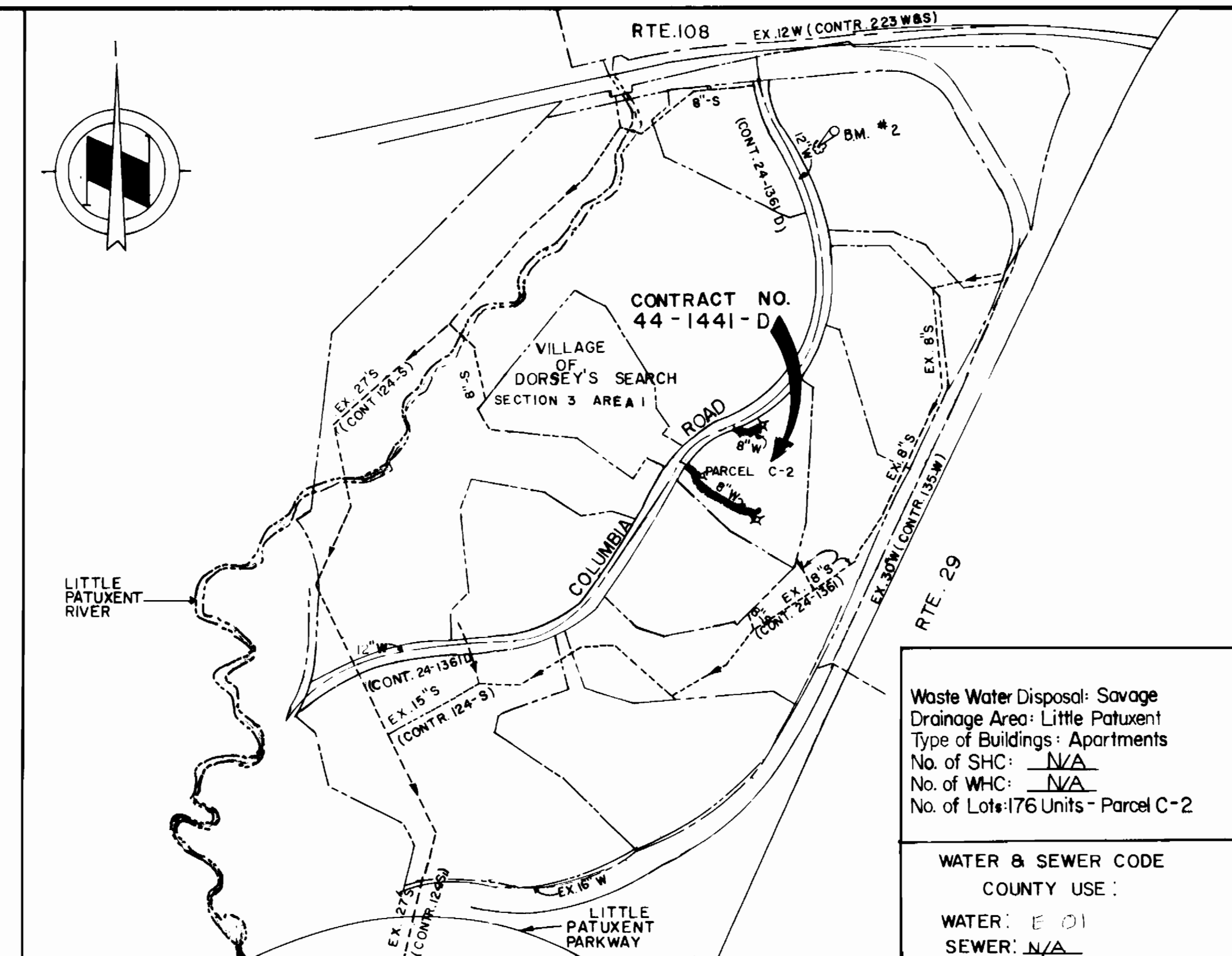


**PLAN**  
Scale: 1" = 50'



**VICINITY MAP**  
SCALE: 1" = 600'

**GENERAL NOTES**

- APPROXIMATE LOCATION OF EXISTING MAINS ARE SHOWN. THE CONTRACTOR SHALL TAKE ALL NECESSARY PRECAUTIONS TO PROTECT EXISTING MAINS AND SERVICES AND MAINTAIN UNINTERRUPTED SUPPLY. ANY DAMAGE INCURRED SHALL BE REPAIRED IMMEDIATELY TO THE SATISFACTION OF THE ENGINEER, AT THE CONTRACTOR'S EXPENSE.
- ALL HORIZONTAL CONTROLS ARE BASED ON MARYLAND STATE COORDINATES.
- ALL VERTICAL CONTROLS ARE BASED ON U.S.G.S. DATUM.
- ALL PIPE ELEVATIONS SHOWN ARE INVERT ELEVATIONS.
- CLEAR ALL UTILITIES BY A MINIMUM OF 6". CLEAR ALL POLES BY 2'-0" MINIMUM OR TUNNEL AS REQUIRED.
- FOR DETAILS NOT SHOWN ON THE DRAWINGS, AND FOR MATERIALS AND CONSTRUCTION METHODS USE HOWARD COUNTY DESIGN MANUAL, VOLUME IV, STANDARD SPECIFICATIONS AND DETAILS FOR CONSTRUCTION. THE CONTRACTOR SHALL HAVE A COPY OF VOLUME IV ON THE JOB.
- CONTRACTOR SHALL NOTIFY THE FOLLOWING UTILITIES OR AGENCIES AT LEAST FIVE WORKING DAYS BEFORE STARTING WORK SHOWN ON THESE PLANS:
  - STATE HIGHWAY ADMINISTRATION - 531-553
  - BALTIMORE GAS & ELECTRIC CO. - CONTRACTOR SERVICES 561-2585
  - BALTIMORE GAS & ELECTRIC CO. - UNDER GROUND DAMAGE CONTROL - 234-5621
  - BALTIMORE GAS & ELECTRIC CO. - TROUBLE SHOOTING - 298-9013
  - MISS UTILITY - 1 - 559-0100
  - COLONIAL PIPELINE CO. - 795-1390
  - BUREAU OF UTILITIES, HOWARD COUNTY DEPARTMENT OF PUBLIC WORKS - 992-2366
- TREES AND SHRUBS ARE TO BE PROTECTED FROM DAMAGE TO MAXIMUM EXTENT. TREES AND SHRUBS LOCATED WITHIN THE CONSTRUCTION STRIP ARE NOT TO BE REMOVED OR DAMAGED BY THE CONTRACTOR.
- CONTRACTOR SHALL REMOVE TREES, STUMPS AND ROOTS ALONG LINE OF EXCAVATION.
- ALL WATER MAINS TO BE D.I.P. CLASS 52 UNLESS OTHERWISE NOTED.
- TOPS OF ALL WATER MAINS TO HAVE A MINIMUM OF 3-1/2" COVER UNLESS OTHERWISE NOTED.
- VALVES ADJACENT TO TEES SHALL BE STRAPPED TO TEES.
- ALL FITTINGS SHALL BE BUTTRESSED OR ANCHORED WITH CONCRETE IN ACCORDANCE WITH THE STANDARD DETAILS UNLESS OTHERWISE PROVIDED FOR ON THE DRAWINGS.
- FIRE HYDRANTS SHALL BE SET TO THE BURY LINE ELEVATIONS SHOWN ON THE DRAWINGS. ALL FIRE HYDRANTS SHALL BE STRAPPED AND BUTTRESSED WITH CONCRETE IN ACCORDANCE WITH STANDARD DETAILS. SOIL AROUND THE FIRE HYDRANT SHALL BE COMPACTED IN ACCORDANCE WITH SECTION 1003 THE STANDARD SPECIFICATIONS.
- THE CONTRACTOR SHALL NOT OPERATE ANY WATER MAIN VALVES ON THE EXISTING WATER SYSTEM.
- ALL COPPER WATER HOUSE CONNECTIONS SHALL UTILIZE FLARED FITTINGS.
- FOR SEDIMENT CONTROL REQUIREMENTS SEE SITE DEVELOPMENT DRAWINGS OF PARCEL C-2.

Waste Water Disposal: Savage  
 Drainage Area: Little Patuxent  
 Type of Buildings: Apartments  
 No. of SHC: N/A  
 No. of WHC: N/A  
 No. of Lots: 176 Units - Parcel C-2

WATER & SEWER CODE  
 COUNTY USE:  
 WATER: E 01  
 SEWER: N/A

QUANTITIES			
ITEM	BID	AS BUILT	MATERIAL/SUPPLIER
2" Water L.F.	39	311 F	TYPE K COPPER
4" Water L.F.	100	127 F	DI PIPE/WATER WORKS
6" Water L.F.	40	54 F	
8" Water L.F.	620	114 F	
2" Meter Vault Ea.	1	11A	A. MILLER
4" Meter Vault Ea.	3	7 F	PRECAST CON / H. NOLLER
Fire Hydrants Ea.	3	5EA	DIKOR

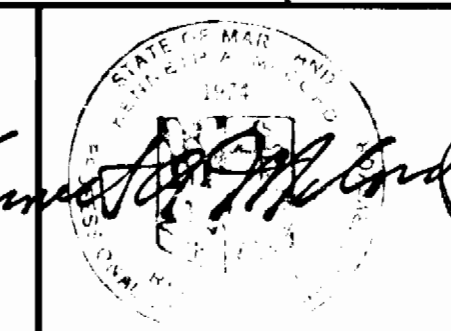
REVIEWED FOR HOWARD SOIL CONSERVATION DISTRICT AND MFTS TECHNICAL REQUIREMENT  
 Signature: *J. Helms* / 2  
 DATE: 2/26/86  
 U.S. SOIL CONSERVATION SERVICE

This Development Plan is approved for Soil Erosion and Sediment Control by the Howard County Conservation District.  
 APPROVED:  
 Signature: *Stephen L. Hulen* / 2  
 DATE: 2/26/86  
 HOWARD S.C.D.

Sediment Control Measures for this Contract will be implemented in accordance with Article 15 of the Standard Specifications.

DEPARTMENT OF PUBLIC WORKS  
 HOWARD COUNTY, MARYLAND  
 Robert M. Bunker / 1  
 DATE: 2-26-86  
 Robert Wood / For RMB 2/24/86  
 DATE: 2-26-86

WHITMAN, REQUARDT AND ASSOCIATES ENGINEERS  
 2315 ST PAUL ST.  
 BALTIMORE, MARYLAND

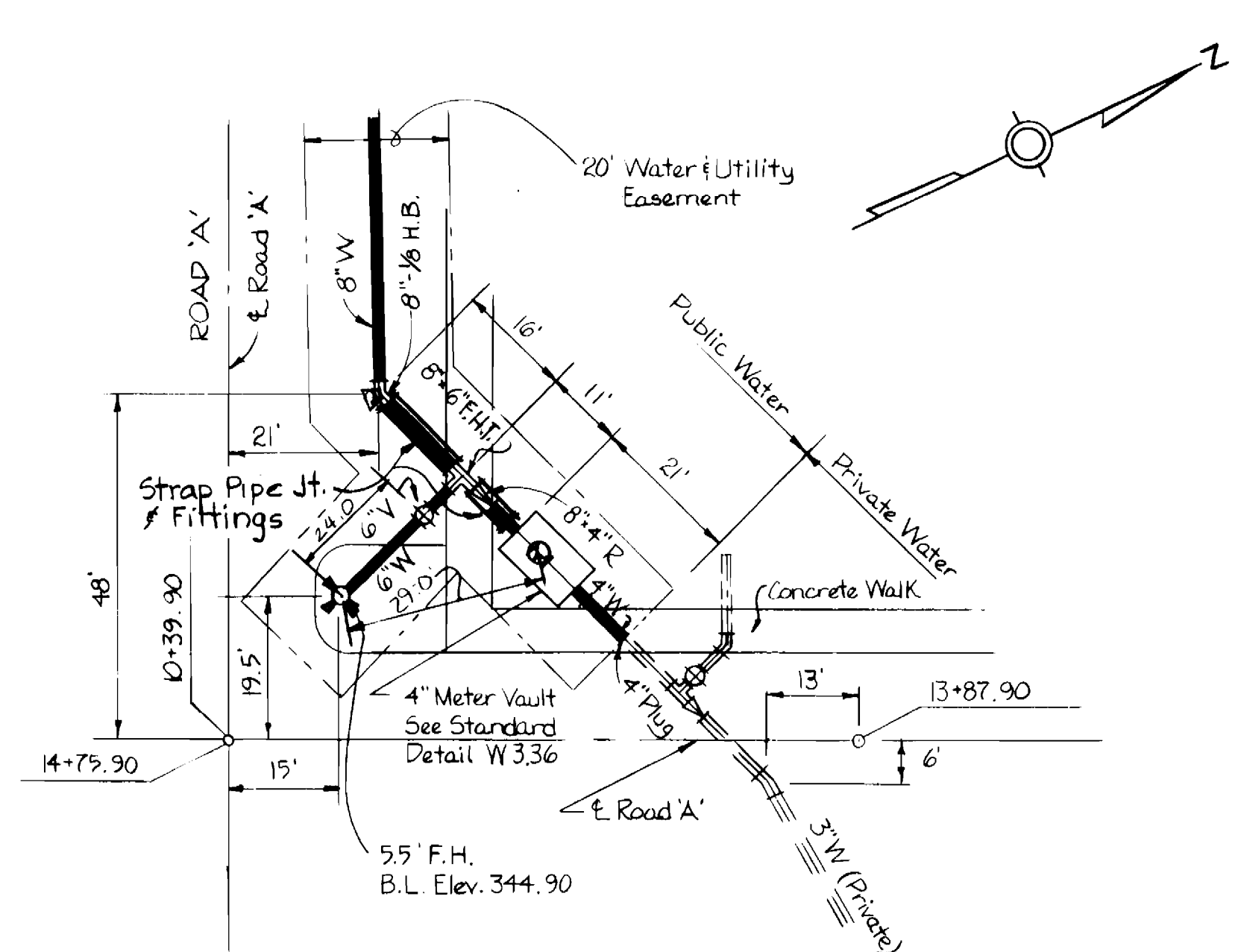


DES	J.W.B.				
DRN	J.E.W.				
CHK	R.B.N.				
DATE:	BY	NO.	REVISION	DATE	

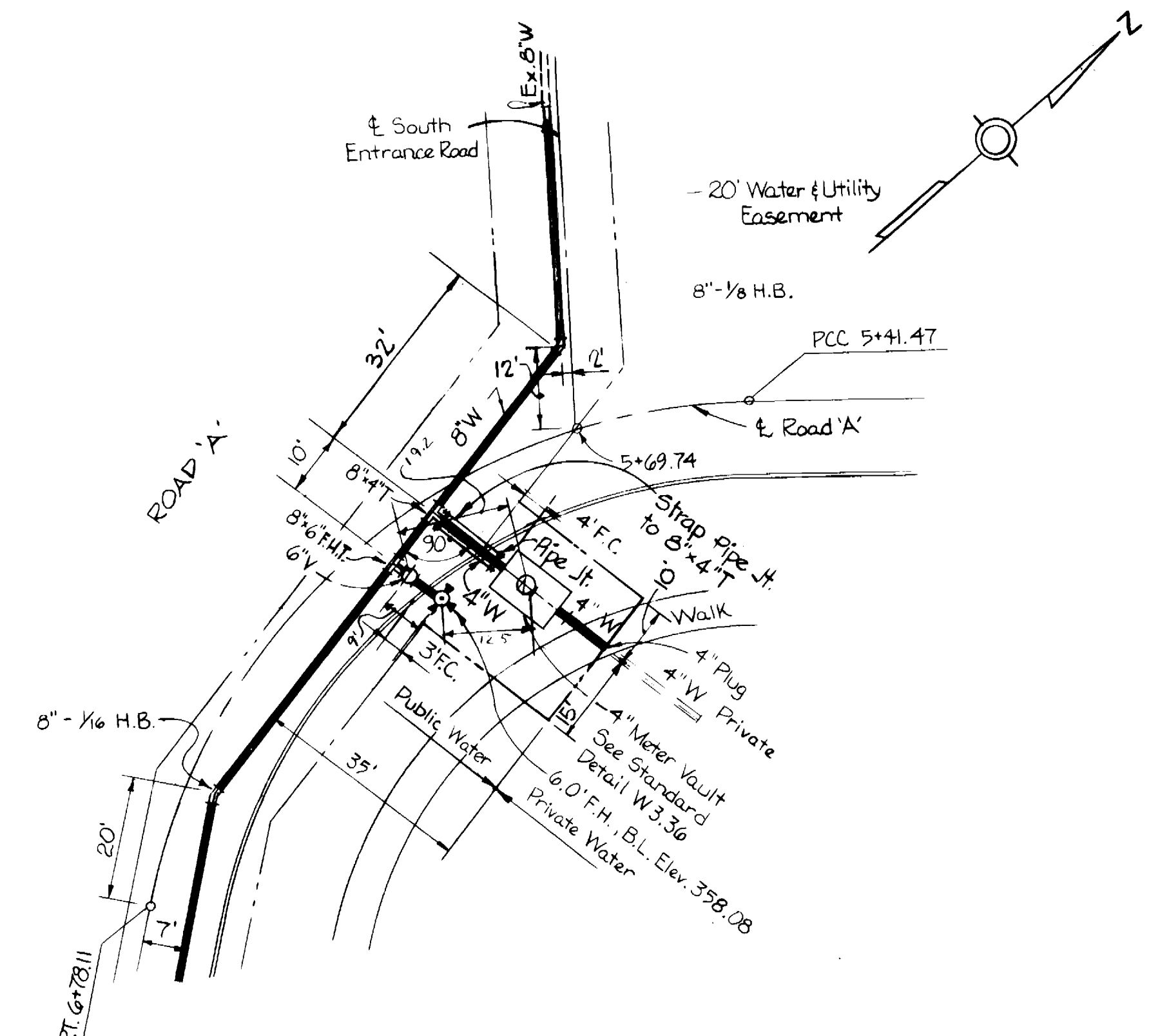
**PLAN OF WATER MAINS**  
 600' SCALE MAP NO. (30) BLOCK NO. 9815

COLUMBIA  
 VILLAGE OF DORSEY'S SEARCH  
 SECTION 3 AREA 1 - PARCEL C-2  
 ELECTION DISTRICT NO.5  
 CONTRACT NO. 44-1441-D

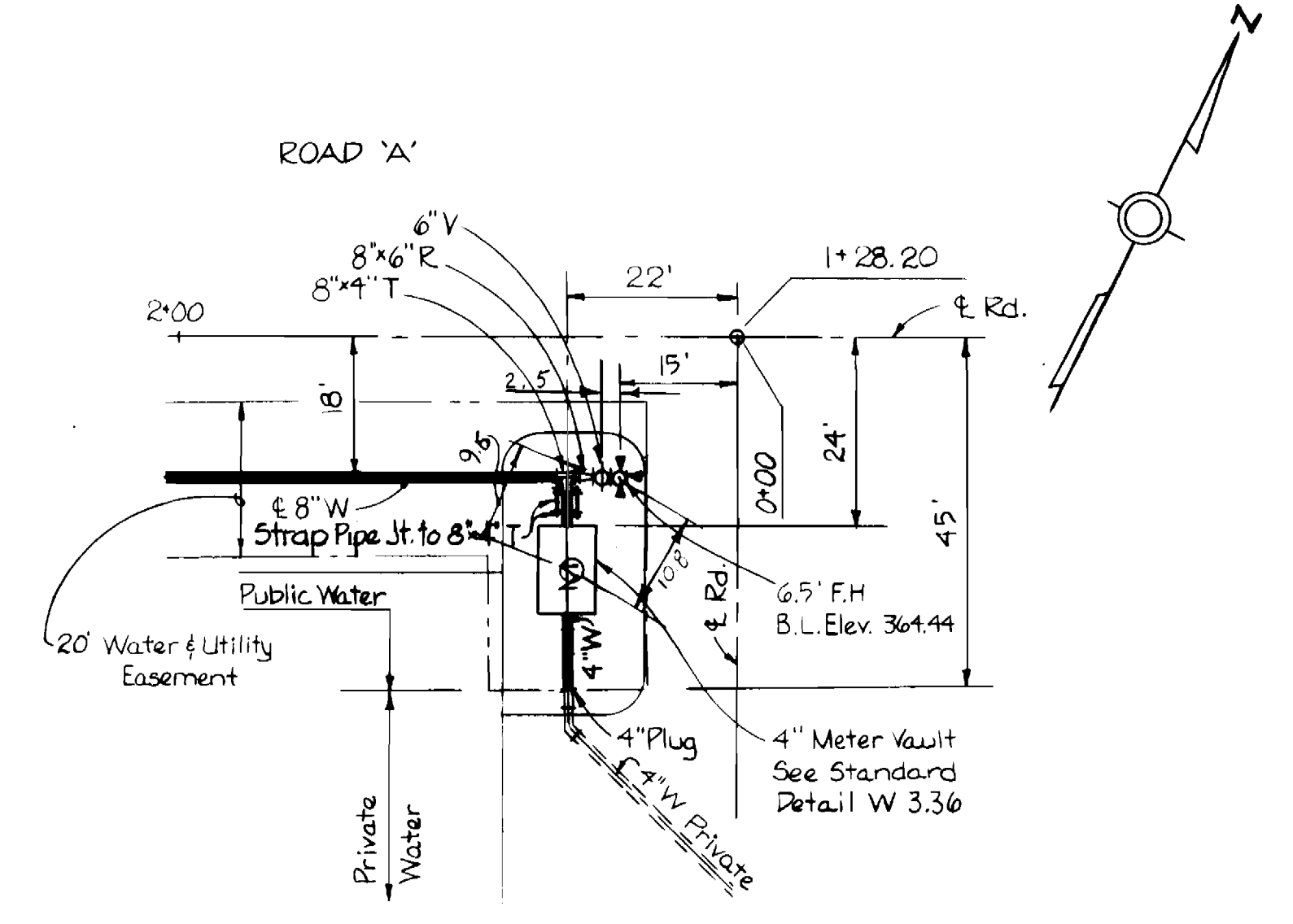
SCALE AS SHOWN  
 SHEET 1 OF 2



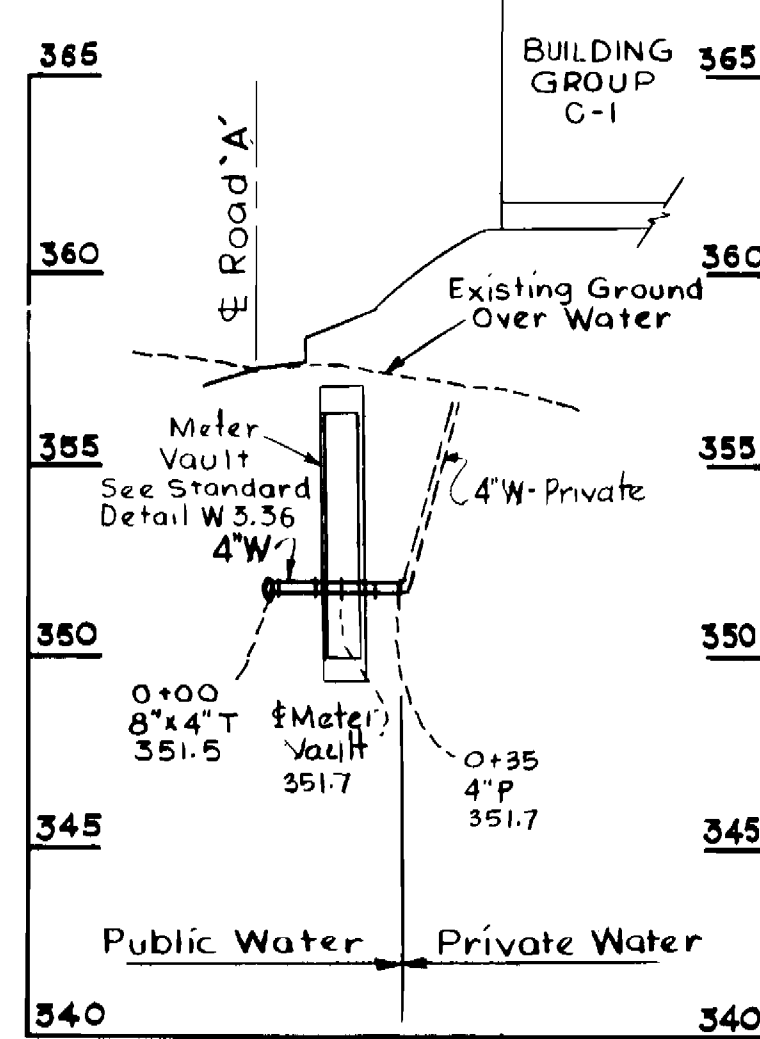
PLAN 'C'  
METER VAULT & FIRE HYDRANT LOCATION  
Scale: 1" = 20'



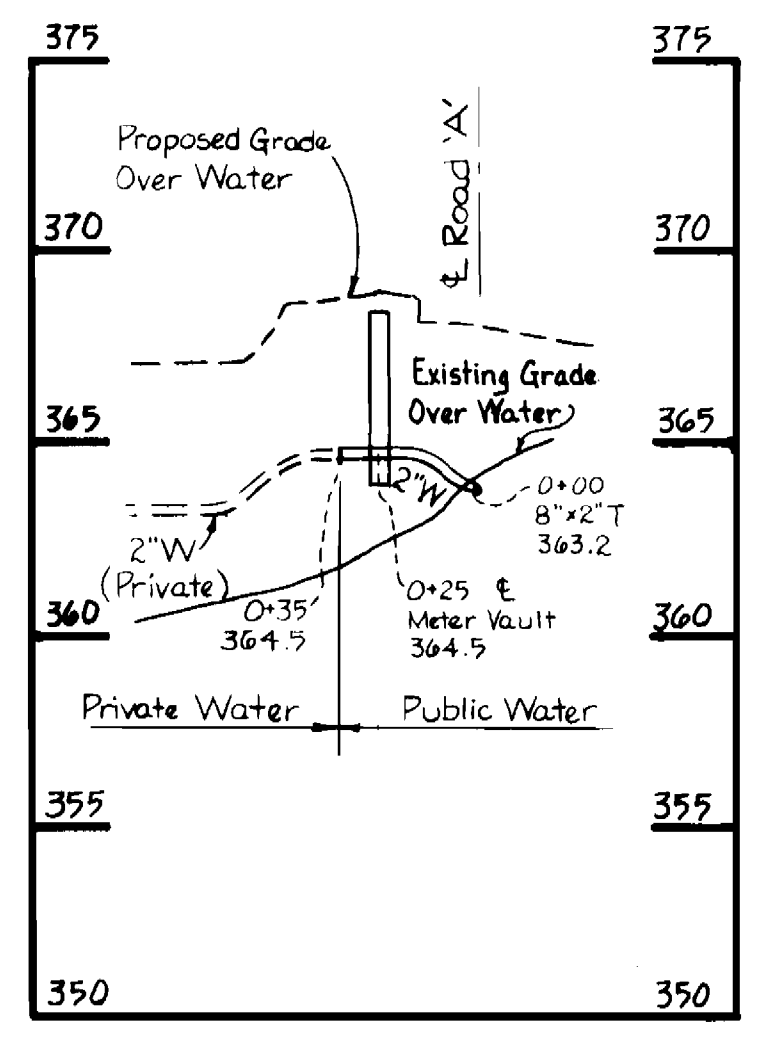
PLAN 'B'  
METER VAULT & FIRE HYDRANT LOCATION  
Scale: 1" = 20'



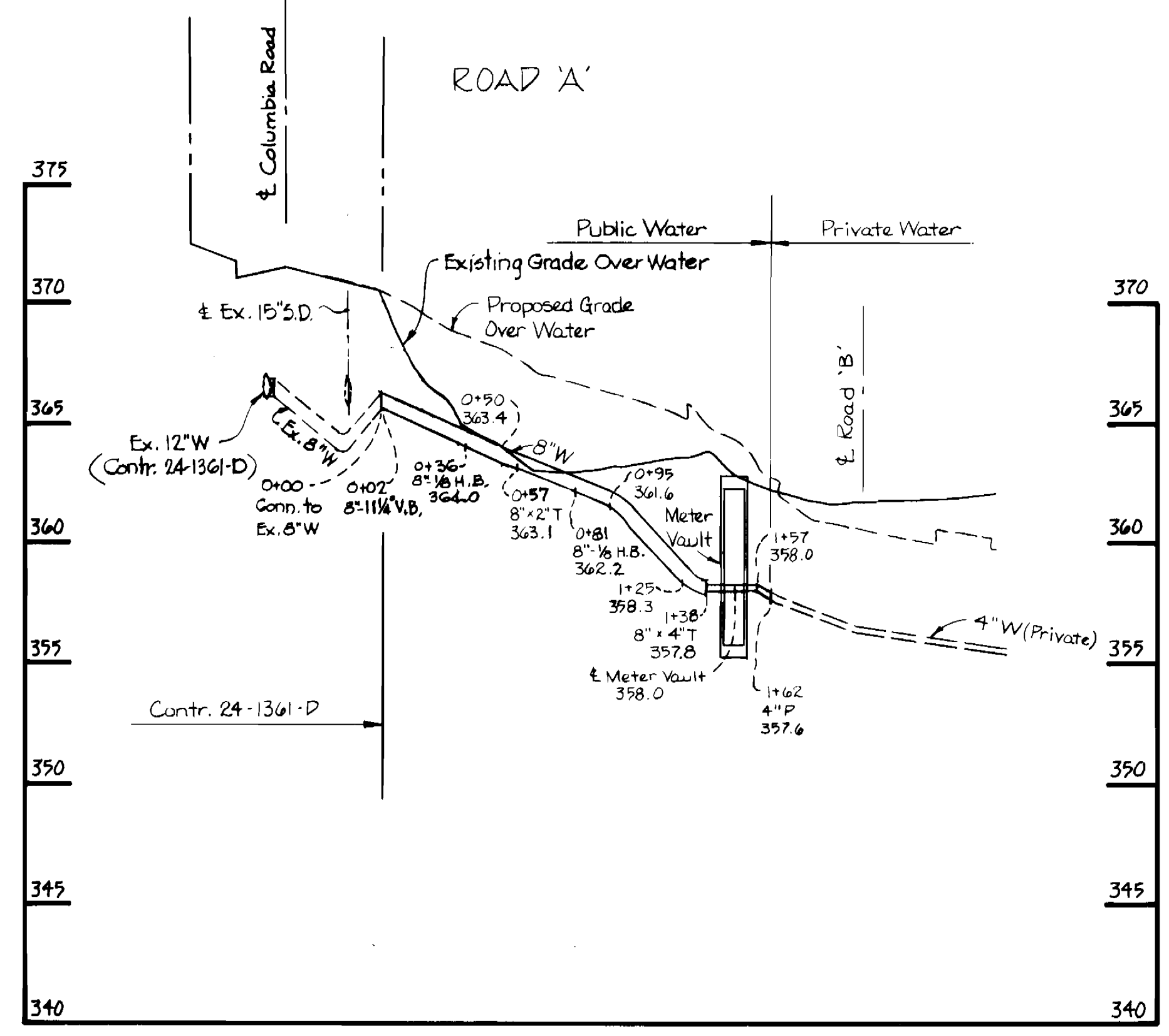
PLAN 'A'  
METER VAULT & FIRE HYDRANT LOCATION  
Scale: 1" = 20'



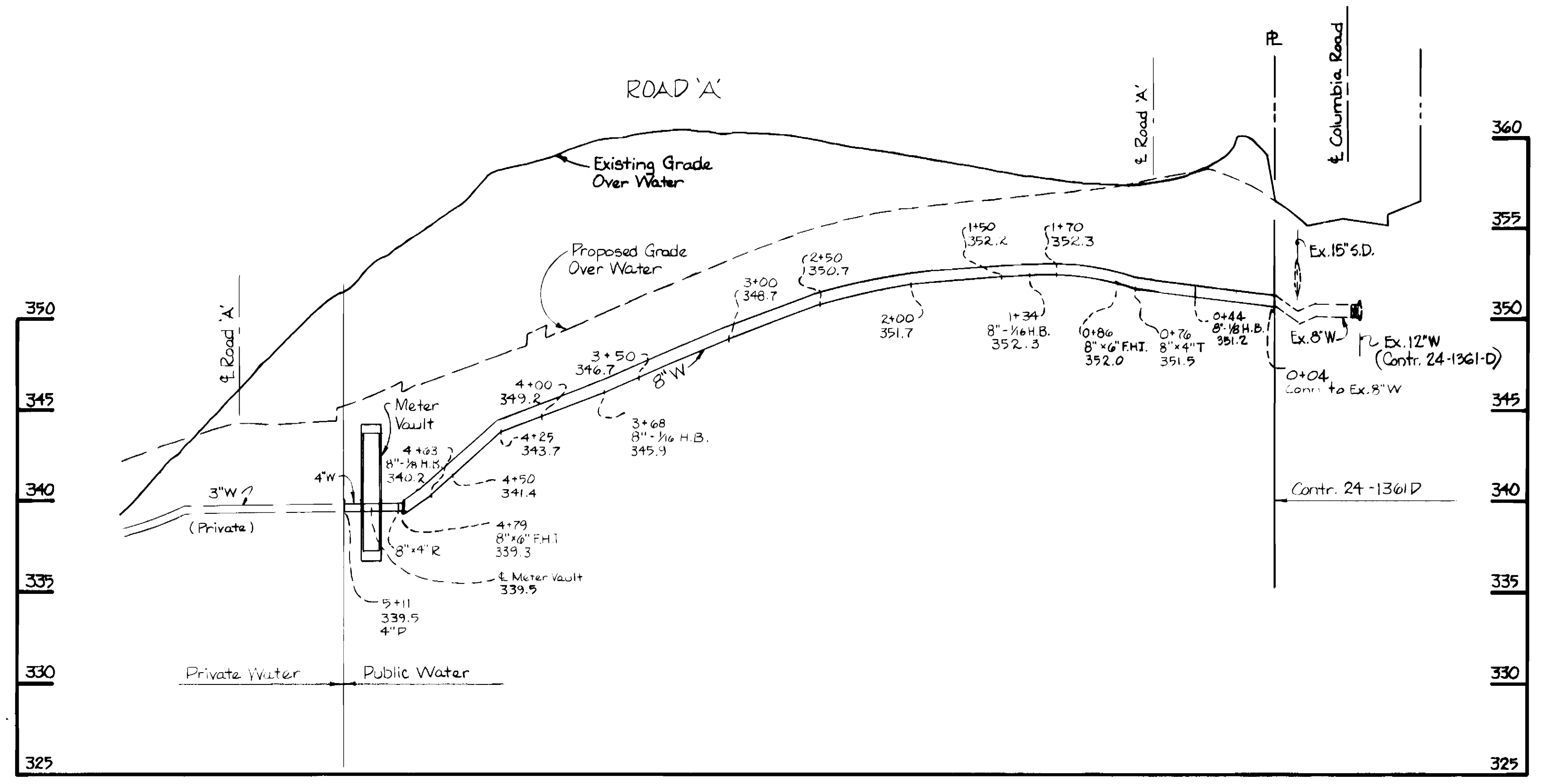
4" W - BLDG. C-1



2" W - BLDG. 1



4" x 8" W - NORTH ENTRANCE



4" x 8" W - SOUTH ENTRANCE

PROFILE  
Scale: H: 1" = 50'  
V: 1" = 5'

DEPARTMENT OF PUBLIC WORKS  
HOWARD COUNTY, MARYLAND

*Robert M. Bevington* / C.F.N. 227186  
DIRECTOR OF PUBLIC WORKS - DATE

*Robert Wood* / for RMB 2/14/86  
CHIEF - BUREAU OF UTILITIES - DATE

*William J. Kelly* / 2-2-86  
CHIEF - BUREAU OF ENGINEERING - DATE

*William J. Kelly* / 2-2-86  
CHIEF - LAND DEVELOPMENT DIVISION - DATE

WHITMAN, REQUARDT  
AND ASSOCIATES  
ENGINEERS

2315 ST. PAUL ST.  
BALTIMORE, MARYLAND

*Thomas A. McClelland*  
REGISTERED PROFESSIONAL ENGINEER & LAND SURVEYOR

DES	J.W.B.			
DRN	J.E.W.			
CHK	R.B.N.			
DATE	BY	NO.	REVISION	DATE

PROFILE & DETAILS  
OF  
WATER MAINS

600' SCALE MAP NO. (30) BLOCK NO. 9 & 15

COLUMBIA  
VILLAGE OF DORSEY'S SEARCH  
SECTION 3 AREA 1 - PARCEL 'C-2'

ELECTION DISTRICT NO. 5  
CONTRACT NO. 44-1441-D

SCALE  
AS  
SHOWN

SHEET  
2 OF 2