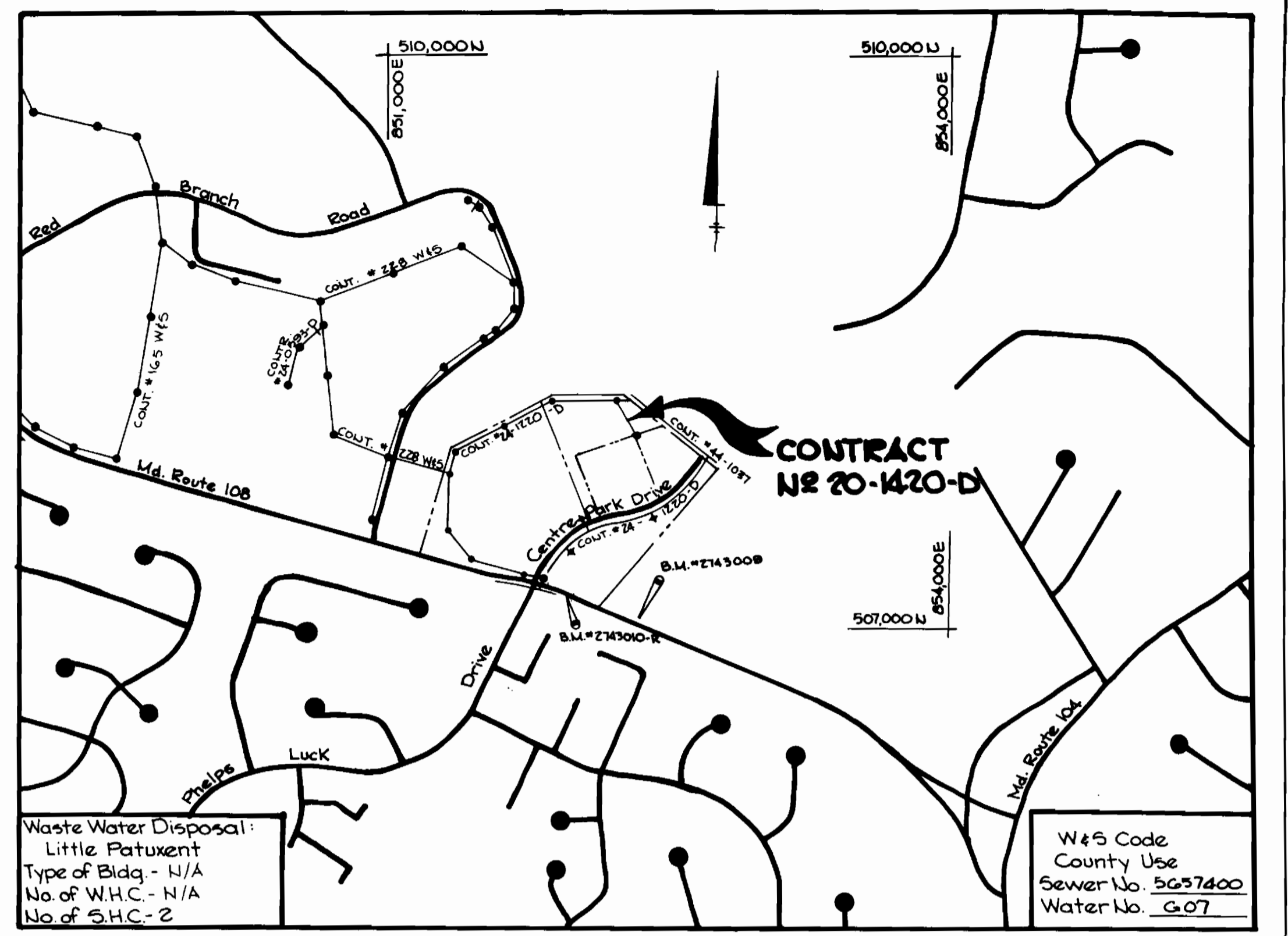
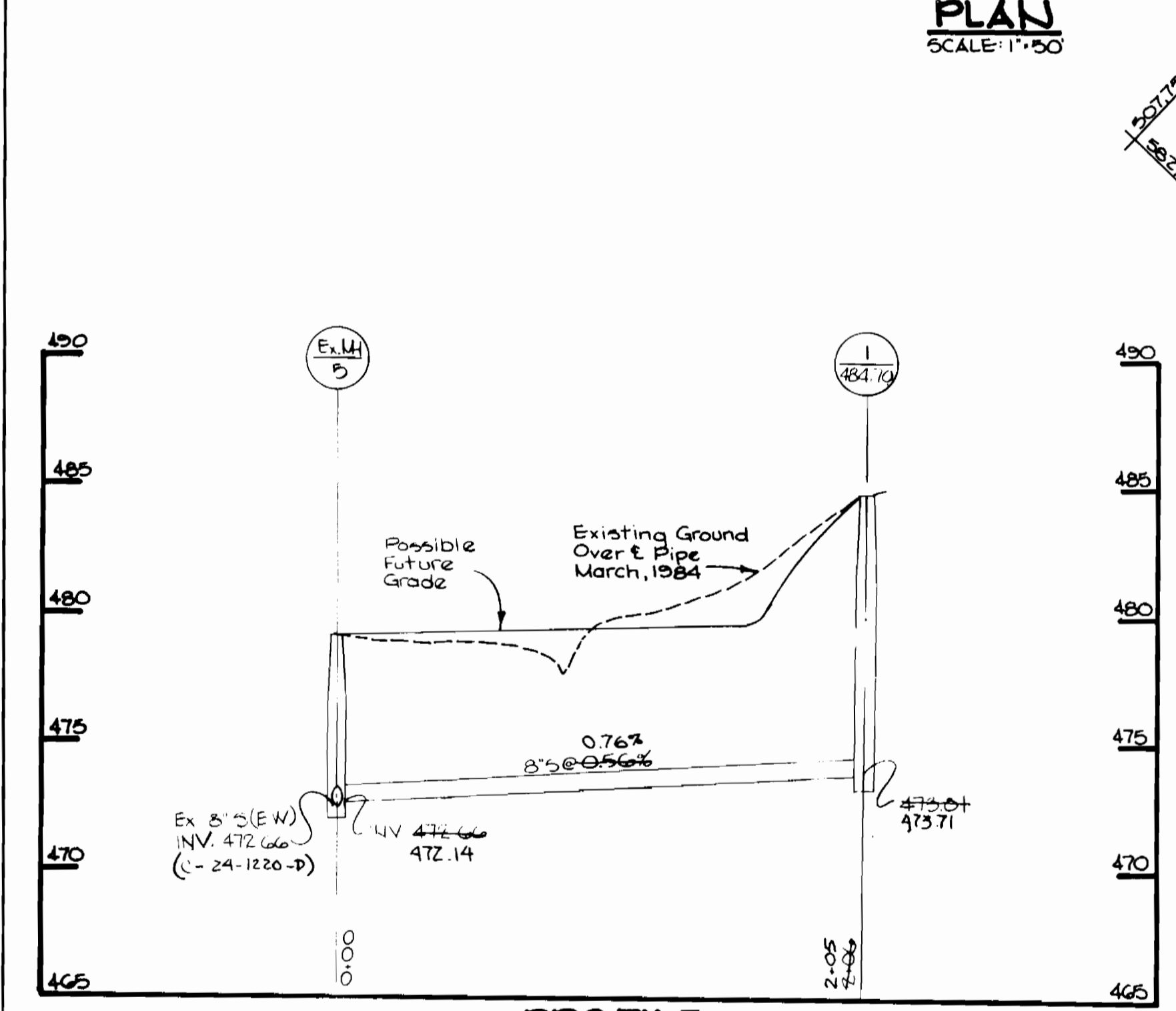


Bench Marks
 BM # Ho.Co. 2743010-R Elev. 482.29'
 3/4" Rebar 0.4 Below Surface
 34.7' South of Curb on Md. Rte. 108
 175' East of E. of Phelps Luck Dr.
 BM # Ho.Co. 2743009 Elev. 530.07'
 Conc. Monument @ Surface 49'
 East of Northwest Dr. of Howard
 H.S. on North Side of Md. Rte. 108

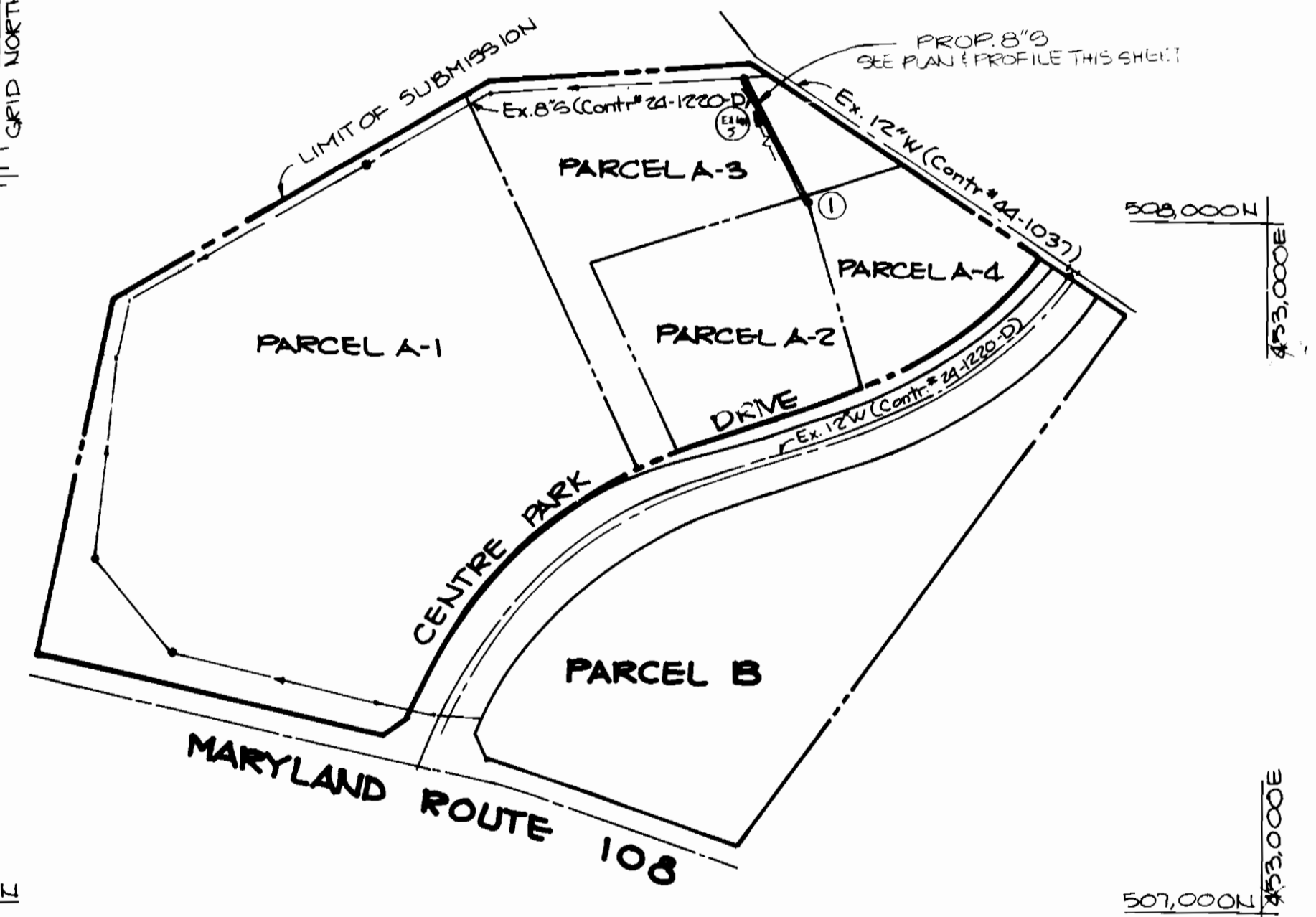


PLAN
 SCALE: 1" = 50'

VICINITY MAP
 SCALE: 1" = 600'



PROFILE
 SCALE: HORIZ. 1" = 50'
 VERT. 1" = 5'



GENERAL PLAN
 SCALE: 1" = 200'

GENERAL NOTES

- Approximate location of existing mains are shown. The contractor shall take all necessary precautions to protect existing mains and services and maintain uninterrupted supply. Any damage incurred shall be repaired immediately.
- All horizontal controls are based on Maryland State Coordinates.
- All vertical controls are based on U.S.G.S. Datum.
- All pipe elevations shown are invert & elevations.
- Clear all utilities by a minimum of 6'. Clear all poles 2'-0" minimum or tunnel as required.
- The contractor shall provide a joint in all sewer mains within 2'-0" of exterior manhole wall.
- All manholes shall be 4'-0" inside diameter unless otherwise noted.
- Contractor shall notify the following utilities or agencies at least five (5) days before starting work on these plans:
 - State Highway Administration - 531-5533
 - Baltimore Gas & Electric Company - Underground Electric Distribution Engineering - "Damage Control" - 234-5691
 - Baltimore Gas & Electric Company - Underground Gas Distribution Engineering - 559-0100
 - Chesapeake & Potomac Telephone Company - 725-9976
 - American Telephone & Telegraph - Cable Location Division - 301-393-3553
 - Colonial Pipeline Company - 781-4641
- Trees are to be protected from damage to maximum extent. Trees located within the construction strip are not to be removed or damaged by the contractor.
- Contractor shall remove trees, stumps and roots along line of excavation as directed by the engineer. Payment for such removal shall be included in the unit price bid for excavation and backfill for water and sewer mains.
- Place regulation "Men Working" and warning signs as required to comply with Maryland State Highway Administration Manual of Traffic Control for Highway Construction and Maintenance Operations.
- All sewer mains shall be CS.PX., V.C.P.X., or A.C.P. Class 2400 unless otherwise noted.
- For details not shown on the drawings, and for materials and construction methods use Howard County design manual, Volume IV, Standard Specifications and Details for Construction. The contractor shall have a copy of Volume IV on the job.
- Where test pits have been made on existing utilities they are noted by the symbol \square at the location of the test pit. A note or notes containing the results of the test pit or pits is included on the drawings. Existing utilities in the vicinity of the proposed work for which test pits have not been dug shall be located by the contractor two weeks in advance of construction operations at his own expense.
- All sanitary sewer house connections shall have a minimum vertical clearance of 12" below all water main crossings.
- Manholes shown with 12" and 16" walls are brick manholes only.
- Manholes designated W.T. in plan and profile shall have watertight frame and covers, Standard Detail G 5.5Z, Volume IV. Where watertight manhole frame and cover is used, set top of frame 1'-0" above finished grade.
- House(s) with the symbol 'C.N.S.' indicates the cellar cannot be served.

QUANTITIES			
ITEM	ESTIMATED	AS BUILT	MATERIAL SUPPLIER
8" S	206 LF	205 LF	A+P WATER + SEWER
MANHOLE	11 V.F.	11 V.F.	ATLANTIC PRECAST
6" SHC	20 LF	24 LF	A+P WATER + SEWER

Sediment Control measures for this contract will be implemented in accordance with Article 15 of the Specifications and as shown on GP-F-84-174.

Howard Soil Conservation District:
 Reviewed for Howard Soil Conservation District and meets technical requirements.
[Signature] 11/18/85
 US Soil Conservation Service Date

This plan is approved for Soil Erosion and Sediment Control by the Howard Soil Conservation District.
[Signature] 11/18/85
 Howard Soil Conservation District Date

DEPARTMENT OF PUBLIC WORKS HOWARD COUNTY, MARYLAND <i>[Signature]</i> 11-18-85 DIRECTOR OF PUBLIC WORKS DATE <i>[Signature]</i> 11-18-85 CHIEF, BUREAU OF UTILITIES DATE		THE RIEMER GROUP, INC. 3105 HEALTH PARK DRIVE ELLICOTT CITY, MARYLAND 21043 <i>[Signature]</i> ARTHUR E. MUEGGE		DES: J.K.B. DRN: W.C.W. CHK: BAC DATE: 0-27-85		ADD'D 6" SHC TO PARCELS A-2 & A-4 REVISED DRAWING PER COMMENTS DATED 10-21-85 BY NO. REVISION DATE		PLAN AND PROFILE OF A SEWER MAIN 600' SCALE MAP NO. 30 BLOCK NO.		OAKLAND EXECUTIVE PARK A RESUBDIVISION OF PARCEL A ELECTION DISTRICT NO. 2 CONTRACT NO. 20-1420-D SCALE AS SHOWN SHEET 1 OF 1	
---	--	---	--	---	--	--	--	---	--	--	--