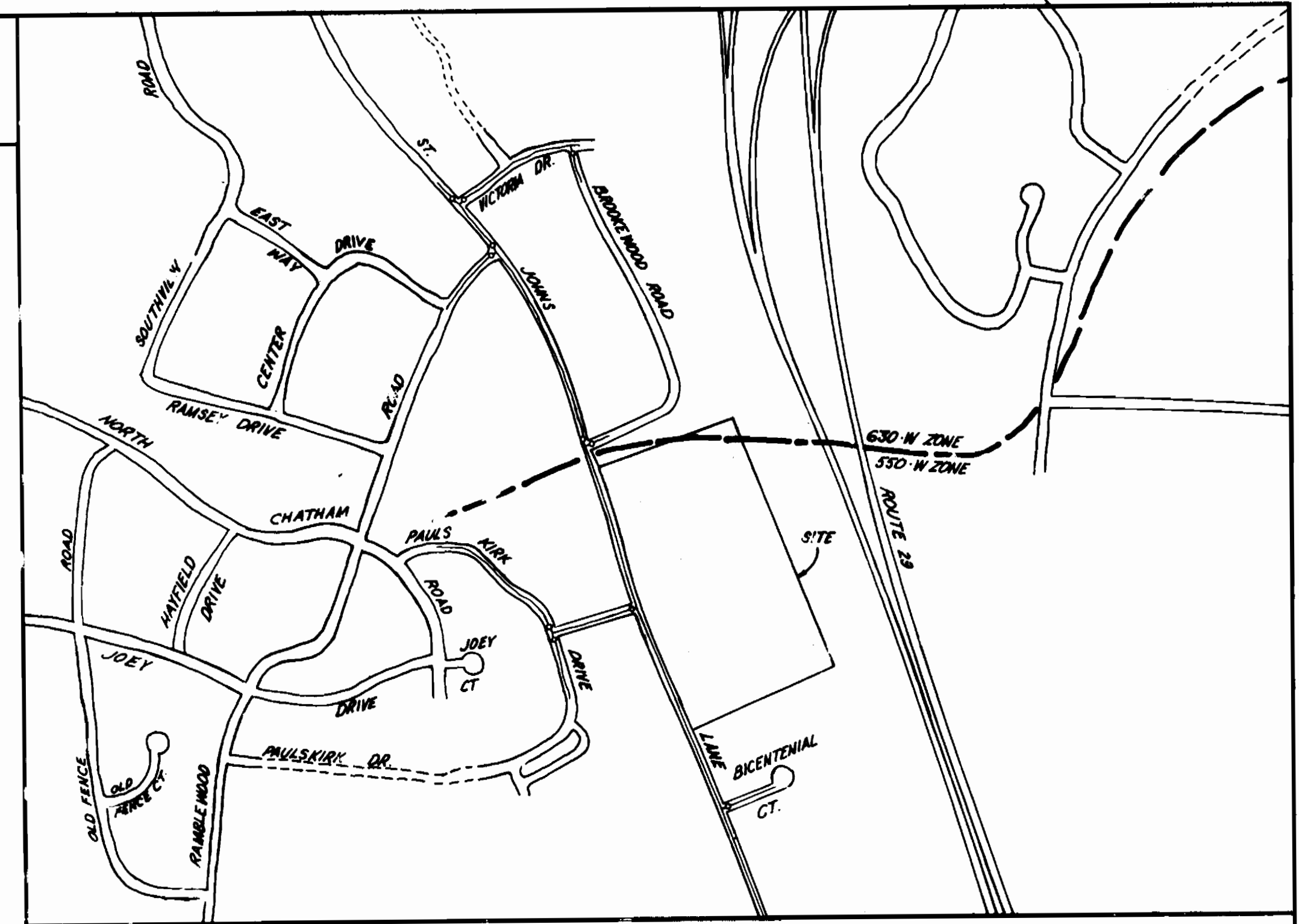
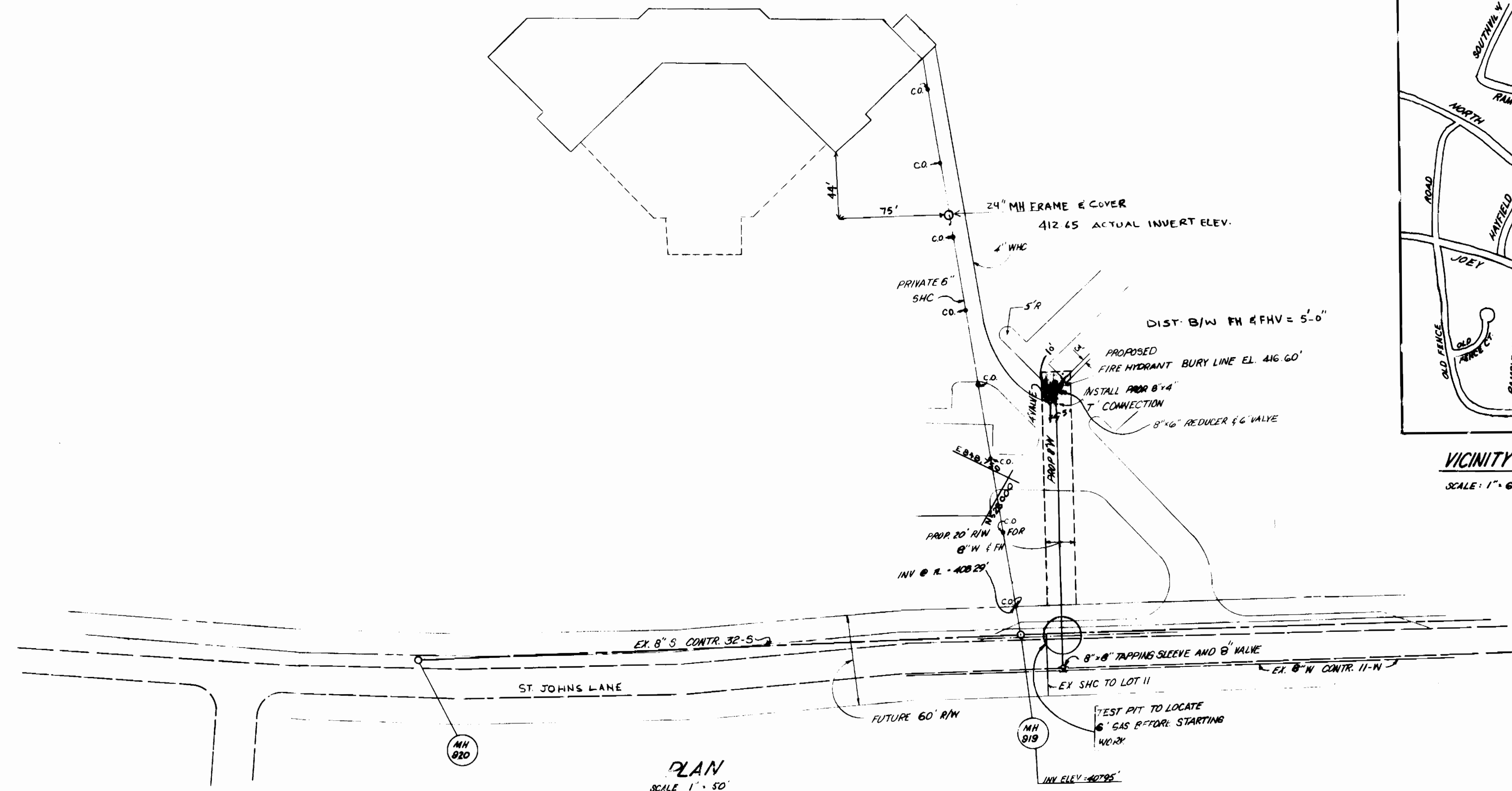


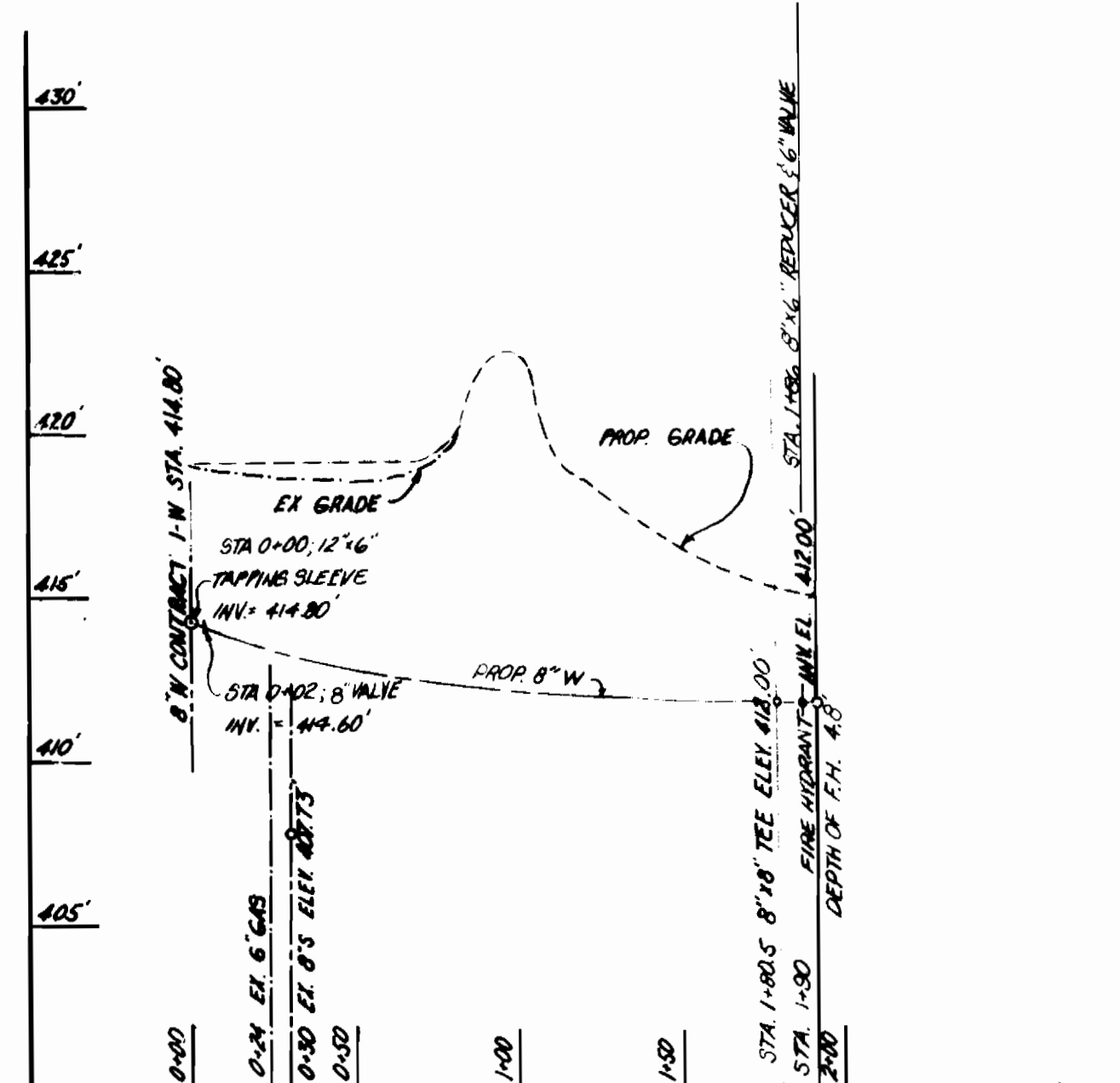
WATER CODE: E-1  
 SENIOR CODE: 1403600  
 DRAINAGE AREA: 14248500  
 NO. W.H.C.: ONE (1)  
 NO. S.H.C.: ONE (1)



VICINITY MAP  
 SCALE: 1" = 600'



PLAN  
 SCALE: 1" = 50'



WATER PROFILE  
 SCALES: HORIZ: 1" = 50'  
 VERT: 1" = 5'

- ### GENERAL NOTES
- APPROXIMATE LOCATION OF EXISTING MAINS ARE SHOWN. THE CONTRACTOR SHALL TAKE ALL NECESSARY PRECAUTIONS TO PROTECT EXISTING MAINS AND SERVICES AND MAINTAIN UNINTERRUPTED SERVICE. ANY DAMAGE INCURRED SHALL BE REPAIRED IMMEDIATELY TO THE SATISFACTION OF THE ENGINEER, AT THE CONTRACTOR'S EXPENSE.
  - ALL HORIZONTAL CONTROLS ARE BASED ON MARYLAND STATE COORDINATES.
  - ALL VERTICAL CONTROLS ARE BASED ON U.S.G.S. DATUM.
  - ALL PIPE ELEVATIONS SHOWN ARE INVERT ELEVATIONS.
  - CLEAR ALL UTILITIES BY A MINIMUM OF 6". CLEAR ALL POLES BY 2'-0" MINIMUM OR TOWER AS REQUIRED. ANY COST INCURRED TO THE CONTRACTOR FOR TOWERING OR BRACING AT POLES SHALL BE INCLUDED IN UNIT PRICES BID FOR EXCAVATION AND BACKFILL.
  - FOR DETAILS NOT SHOWN ON THE DRAWINGS USE HOWARD COUNTY STANDARD DETAILS.
  - FOR MATERIALS AND CONSTRUCTION METHODS USE HOWARD COUNTY STANDARD SPECIFICATIONS.
  - CONTRACTOR SHALL LOCATE EXISTING UTILITIES A MINIMUM OF TWO (2) WEEKS IN ADVANCE OF CONSTRUCTION OPERATIONS IN THE VICINITY OF PROPOSED UTILITIES AT HIS OWN EXPENSE.
  - CONTRACTOR SHALL NOTIFY THE FOLLOWING UTILITIES OR AGENCIES AT LEAST FIVE (5) WORKING DAYS BEFORE STARTING WORK ON THESE PLANS:  
 STATE HIGHWAY ADMINISTRATION - 531-5533  
 BALTIMORE GAS & ELECTRIC COMPANY - UNDERGROUND ELECTRIC DISTRIBUTION CUSTOMER SERVICE - 685-0183  
 BALTIMORE GAS & ELECTRIC COMPANY - UNDERGROUND GAS DISTRIBUTION CUSTOMER SERVICE - 685-0123  
 ENGINEERING - "DAMAGE CONTROL" - 234-5621  
 "MISS UTILITY" - 1-559-0400  
 CHESAPEAKE POTOMAC (CIP) TELEPHONE COMPANY 725-9075  
 AMERICAN TELEPHONE AND TELEGRAPH - CABLE LOCATION DIVISION - 393-3553  
 COLONIAL PIPELINE COMPANY - 781-4841  
 BUREAU OF UTILITIES HOWARD COUNTY - 382-2768
  - TREES ARE TO BE PROTECTED FROM DAMAGE TO MAXIMUM EXTENT. TREES LOCATED WITHIN THE CONSTRUCTION STRIP ARE NOT TO BE REMOVED OR DAMAGED BY THE CONTRACTOR.
  - CONTRACTOR SHALL REMOVE TREES, STUMPS AND ROOTS ALONG LINE OF EXCAVATION AS INDICATED BY THE ENGINEER. PAYMENT FOR SUCH REMOVAL SHALL BE INCLUDED IN THE UNIT PRICE BID FOR EXCAVATION AND BACKFILL.
  - PLACE REGULATION "MEN WORKING" AND WARNING SIGNS AS REQUIRED TO COMPLY WITH MARYLAND STATE HIGHWAY ADMINISTRATION MANUAL OF TRAFFIC CONTROL FOR HIGHWAY CONSTRUCTION AND MAINTENANCE OPERATIONS.
  - ALL WATER MAINS TO BE C.I.P. OR D.I.P. UNLESS OTHERWISE NOTED.
  - TOP OF ALL WATER MAINS TO HAVE A MINIMUM OF 3'-1/2" COVER UNLESS OTHERWISE NOTED.
  - VALVES ADJACENT TO TREES SHALL BE STRAPPED TO TREES.
  - BLOCK ALL FITTINGS WITH CONCRETE.
  - BURY LINE ELEVATIONS ON FIRE HYDRANTS SHALL BE SET TO THE ELEVATIONS SHOWN ON THESE DRAWINGS. ALL FIRE HYDRANTS SHALL BE STRAPPED AND BUTTRESSED WITH CONCRETE IN ACCORDANCE WITH STANDARD DETAILS SOIL AROUND THE FIRE HYDRANT TO BE COMPACTED IN ACCORDANCE WITH SECTION 5-15 OF STANDARD SPECIFICATIONS.
  - ALL WATER HOUSE CONNECTIONS SHALL BE FOR AN INSIDE METER SETTING.
  - THE CONTRACTOR SHALL NOT OPERATE ANY WATER MAIN VALVES ON THE EXISTING SYSTEM.

SEDIMENT CONTROL MEASURES WILL BE IMPLEMENTED IN ACCORDANCE WITH ART. 15 OF THE SPECIFICATIONS AND WITH SDP 85-30

REVIEWED FOR HOWARD SOIL CONSERVATION DISTRICT AND MEETS TECHNICAL REQUIREMENT.

*James M. Nelson* 9/14/85  
 S.O. SOIL CONSERVATION SERVICE DATE

THIS DEVELOPMENT PLAN IS APPROVED FOR SOIL, EROSION AND SEDIMENT CONTROL BY THE HOWARD SOIL CONSERVATION DISTRICT

APPROVED

*Stephen J. Huber* 9/17/85  
 HOWARD SCD DATE

QUANTITIES				
ITEM	ESTIMATED	AS BUILT	MATERIAL	SUPPLIER
FIRE HYDRANT	1 NO.	1	METRO F.W.	BELAIR ROAD SUPPLY
4" W.H.C.	10 L.F.	10	BELAIR ROAD SUPPLY	
4" VALVE	1 NO.	1	METRO GATE	BELAIR
8" DUCTILE IRON PIPE	150 L.F.	150	BELAIR ROAD SUPPLY	
8" TAP SLEEVE	1 NO.	1	US PIPE	BELAIR SUPPLY
8" TEE	1 NO.	1	BELAIR ROAD SUPPLY	
8" VALVE	1 NO.	1		
6" PVC	17 L.F.	17	6" PVC	BELAIR

DEPARTMENT OF PUBLIC WORKS  
 HOWARD COUNTY, MARYLAND

*Richard B. ...* 9-18-85  
 DIRECTOR OF PUBLIC WORKS DATE

*...* 9/17/85  
 CHIEF, LAND DEVELOPMENT DIV. DATE

BOENDER ASSOCIATES, INC.  
 ENGINEERS · PLANNERS · SURVEYORS

3565 ELLICOTT MILLS DRIVE  
 ELLICOTT CITY, MARYLAND 21043

(301) 465-7777

DES				
DRN				
CHECK				
DATE	BY	NO	REVISION	DATE
			ADD ROAD NAME AND GROUND PICK	11/2/85

WATER EXTENSION FOR FIRE HYDRANT

PLAN AND PROFILE

MAP NO. BLOCK NO.

BETHEL PRESBYTERIAN CHURCH

CONTRACT 14-1399 D

SCALE: AS NOTED

SHEET 1 of 1

AS-BUILT 10/16/86 85018