
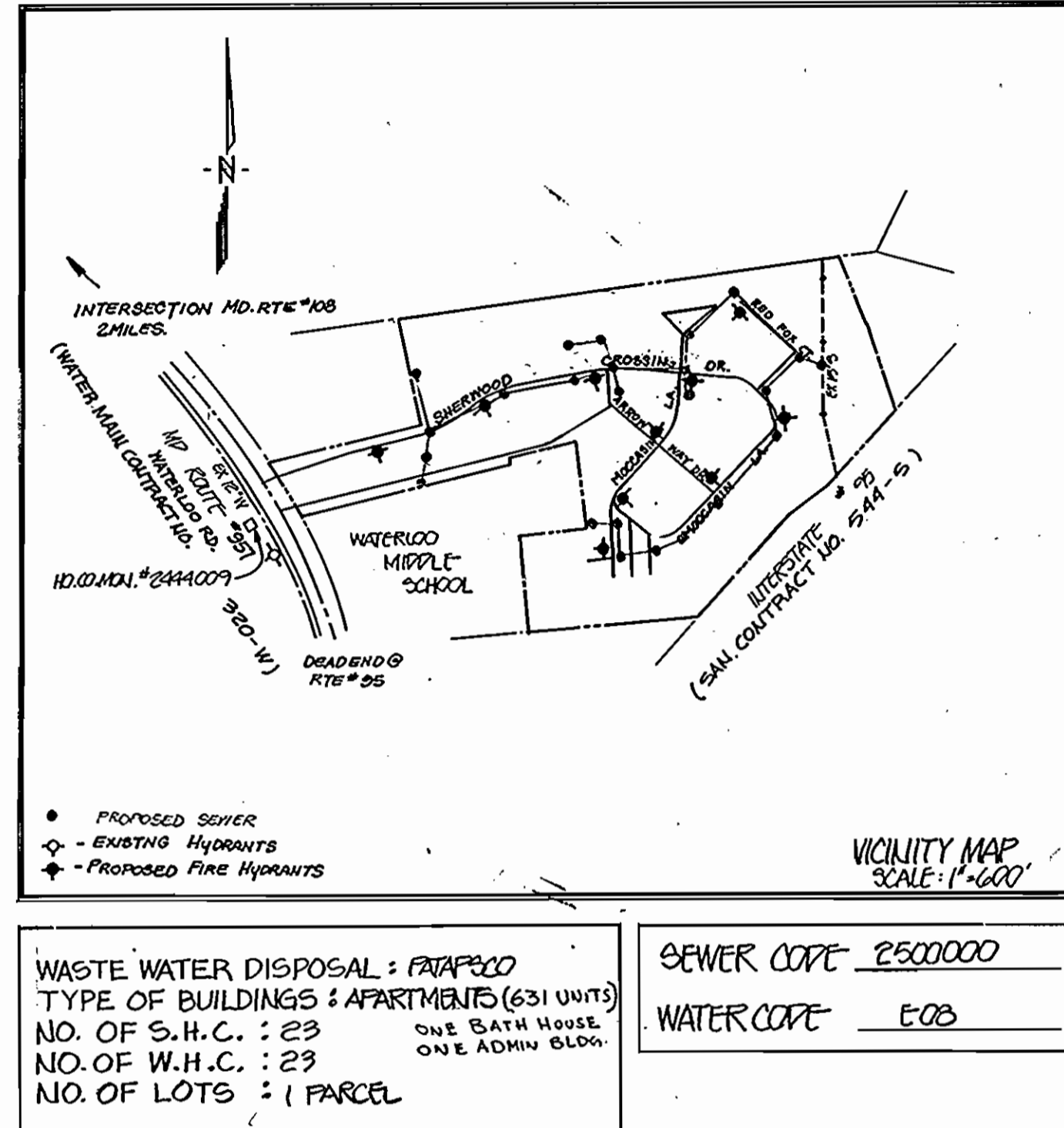


# GENERAL NOTES

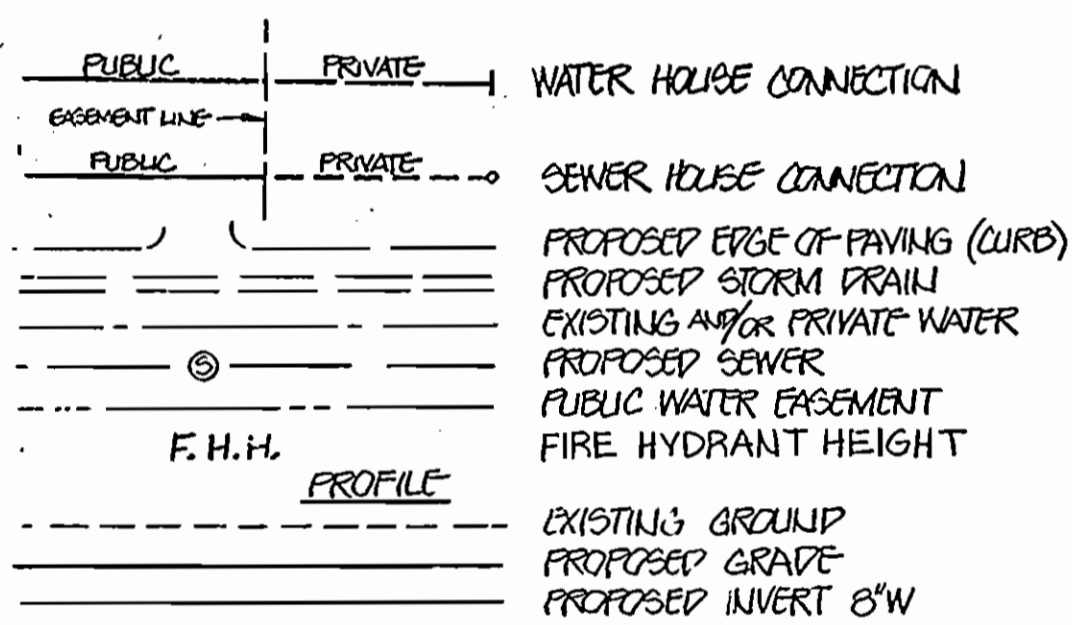
## PART I

- APPROXIMATE LOCATION OF EXISTING MAIN ARE SHOWN. THE CONTRACTOR SHALL TAKE ALL NECESSARY PRECAUTIONS TO PROTECT EXISTING MAINS AND SERVICES AND MAINTAIN UNINTERRUPTED SUPPLY. ANY DAMAGE INCURRED SHALL BE REPAIRED IMMEDIATELY, TO THE SATISFACTION OF THE ENGINEER, AT THE CONTRACTOR'S EXPENSE.
- ALL HORIZONTAL CONTROLS ARE BASED ON MARYLAND STATE COORDINATES.
- ALL VERTICAL CONTROLS ARE BASED ON U.S.G.S. DATUM.
- ALL PIPE ELEVATIONS SHOWN ARE INVERT ELEVATIONS.
- CLEAR ALL UTILITIES BY A MINIMUM OF 6". CLEAR ALL POLES 2'-0" MINIMUM OR TUNNEL AS REQUIRED.
- FOR DETAILS NOT SHOWN ON THE DRAWINGS, AND FOR MATERIALS AND CONSTRUCTION METHODS, USE HOWARD COUNTY DESIGN MANUAL, VOLUME IV, STANDARD SPECIFICATIONS AND DETAILS FOR CONSTRUCTION. THE CONTRACTOR SHALL HAVE A COPY OF VOLUME IV ON THE JOB.
- WHERE TEST PITS HAVE BEEN MADE ON EXISTING UTILITIES, THEY ARE NOTED BY THE SYMBOL  AT THE LOCATION OF THE TEST PIT. A NOTE OR NOTES CONTAINING THE RESULTS OF THE TEST PIT OR PITS IS INCLUDED ON THE DRAWINGS. EXISTING UTILITIES IN THE VICINITY OF THE PROPOSED WORK FOR WHICH TEST PITS HAVE NOT BEEN DUG SHALL BE VERIFIED BY THE CONTRACTOR TO HIS OWN SATISFACTION. ANY DAMAGE TO EXISTING FACILITIES DUE TO THE CONTRACTOR'S NEGLIGENCE SHALL BE REPAIRED AT THE CONTRACTOR'S EXPENSE.
- CONTRACTOR SHALL NOTIFY THE FOLLOWING UTILITIES OR AGENCIES AT LEAST FIVE WORKING DAYS BEFORE STARTING WORK SHOWN ON THESE PLANS:
  - STATE HIGHWAY ADMINISTRATION - 531-5533
  - BALTIMORE GAS & ELECTRIC CO. - CONTRACTOR SERVICES, 561-2585
  - BALTIMORE GAS & ELECTRIC CO. - UNDER GROUND DAMAGE CONTROL - 234-5621
  - BALTIMORE GAS & ELECTRIC CO. - TROUBLE SHOOTING - 298-9013
  - MISS UTILITY - 1-559-0100
  - COLONIAL PIPELINE CO. - 795-1390
  - BUREAU OF UTILITIES, HOWARD COUNTY DEPARTMENT OF PUBLIC WORKS - 992-2366
- TREES AND SHRUBS ARE TO BE PROTECTED FROM DAMAGE TO MAXIMUM EXTENT. TREES AND SHRUBS LOCATED WITHIN THE CONSTRUCTION STRIP ARE NOT TO BE REMOVED OR DAMAGED BY THE CONTRACTOR.
- CONTRACTOR SHALL REMOVE TREES, STUMPS AND ROOTS ALONG LINE OF EXCAVATION.
- ALL WATER MAINS TO BE D.I.P. CLASS 52 UNLESS OTHERWISE NOTED.
- TOPS OF ALL WATER MAINS TO HAVE A MINIMUM OF 3'-1/2' COVER UNLESS OTHERWISE NOTED.
- VALVES ADJACENT TO TEES SHALL BE STRAPPED TO TEES.
- ALL FITTINGS SHALL BE BUTTRESSED OR ANCHORED WITH CONCRETE IN ACCORDANCE WITH THE STANDARD DETAILS UNLESS OTHERWISE PROVIDED FOR ON THE DRAWINGS.
- FIRE HYDRANTS SHALL BE SET TO THE BURY LINE ELEVATIONS SHOWN ON THE DRAWINGS. ALL FIRE HYDRANTS SHALL BE STRAPPED AND BUTTRESSED WITH CONCRETE IN ACCORDANCE WITH SECTION 1003 THE STANDARD SPECIFICATIONS.
- THE CONTRACTOR SHALL NOT OPERATE ANY WATER MAIN VALVES ON THE EX. WATER SYSTEM.
- ALL WATER HOUSE CONNECTIONS SHALL BE FOR AN INSIDE METER SETTING, UNLESS OTHERWISE NOTED ON THE PLANS OR IN THE SPECIFICATIONS.
- ALL W.H.C.'S SHALL BE 3/4" UNLESS OTHERWISE NOTED.
- ALL COPPER WATER HOUSE CONNECTIONS SHALL UTILIZE FLARED FITTINGS.
- ALL SEWER MAINS SHALL BE C.S.P.X., C.I.P., V.C.P.X., A.C.P. CLASS 2400 OR P.V.C. UNLESS OTHERWISE NOTED.
- THE CONTRACTOR SHALL PROVIDE A JOINT IN ALL SEWER MAINS WITHIN 2'-0" OF EXTERIOR MANHOLE WALL.
- ALL MANHOLES SHALL BE 4'-0" INSIDE DIAMETER UNLESS OTHERWISE NOTED.
- MANHOLES SHOWN WITH 12" AND 16" WALLS ARE BRICK MANHOLES ONLY.
- MANHOLES DESIGNATED W.T. IN PLAN AND PROFILE SHALL HAVE WATERTIGHT FRAME AND COVERS, STANDARD DETAIL 65.52. WHERE WATERTIGHT MANHOLE FRAME AND COVER IS USED, SET TOP OF FRAME 0.5' ABOVE FINISHED GRADE UNLESS OTHERWISE NOTED ON THE DRAWINGS.
- ORIGINAL GROUND OVER WATER AND SEWER WAS TAKEN FROM AERIAL PHOTOGRAPHY PREPARED BY MAPS INC. AND VERIFIED BY FIELD SURVEY IN FEBRUARY 1984.
- STRAW BALE DIKE AND SILT FENCE ARE INTERCHANGEABLE.
- FOR ALL 3 INCH W.H.C.'S USE STANDARD DETAIL W-3.24 AND ALL 2 INCH W.H.C.'S USE STANDARD DETAIL W-3.21

QUANTITIES			
ITEM	BID	AS-BUILT	MATERIAL / SUPPLIER
8" WATER	LF 3254'	SOME	GRIFFIN PIPE PRODUCTS CO.
12" WATER	LF 1411'	"	"
2" W.H.C.	LF 30'	"	"
3" W.H.C.	LF 280'	"	"
FIRE HYDRANT	EA 13	"	METROPOLITAN FIRE HYDRANT
12" x 6" TEE	EA 4	"	GRIFFIN PIPE PRODUCTS CO.
8" x 4" TEE	EA 8	"	BELAIR ROAD SUPPLY INC.
12" x 12" TEE	EA 1	"	"
12" x 4" TEE	EA 3	"	"
8" x 8" TEE	EA 2	"	"
8" x 4" TEE	EA 14	"	"
2" VALVE	EA -	2	U.S. PIPE / BELAIR ROAD CO. / SUPPLY CO. INC.
4" VALVE	EA 19	"	U.S. PIPE / BELAIR ROAD CO. / SUPPLY CO. INC.
6" VALVE	EA 13	"	U.S. PIPE CO.
8" VALVE	EA 7	"	U.S. PIPE CO.
12" x 8" REDUCER	EA 2	"	"
8" x 6" REDUCER	EA 2	"	GRIFFIN PIPE PROD.
6" x 3" REDUCER	EA 1	"	GRIFFIN PIPE PROD.
4" x 3" REDUCER	EA 17	"	"
8" x 8" CROSS	EA 1	"	"
8" x 4" CROSS	EA 1	"	"
8" 45° H.BEND	EA 3	"	"
8" 22 1/2° H.BEND	EA 14	"	"
12" 11 1/2° H.BEND	EA 1	"	"
8" CAP	EA 1	"	"
3" CAP	EA 1	"	"
12" x 12" TEE	EA 1	"	"
12" x 2" TAP TEE	EA 2	"	"
2" Corporation Cock	EA 2	"	A.Y. McDONALD MFG. CO.
2" Ball Valve Box	EA 2	"	A.Y. McDONALD MFG. CO.
12" 1/2" H.B.	EA 2	"	GRIFFIN PIPE PROD.
8" SEWER	LF 2452'	"	J.M. PROD. BELAIR ROAD SUPPLY CO. INC.
6" S.H.C.	LF 290'	"	J.M. PROD.
MANHOLES	EA 17	18" S.H.#22	ATLANTIC PRECAST CONC. CORP. APPROV. SEE PLAN.



### LEGEND



MANHOLE STAKE-OUT TIES		
Nº	STATION	OFF-SET STREET
1	SEE PLAN	
2	SEE PLAN	RED FOX COURT
3	0+15	8' RT
4	17+85	5' LT SHERWOOD CROSSING DR.
5	17+85	4' LT SHERWOOD CROSSING DR.
6	14+42	8' LT
7	12+82	7' LT
8	10+41	11' LT
9	7+05	7' LT
10	SEE PLAN	
11	SEE PRIVATE PLAN	
12	"	"
13	"	"
14	NO MANHOLE # 14	
15	23+44	6' RT SHERWOOD CROSSING DR.
16	12+73	4' LT MOCCASIN LANE
17	10+35	5' RT
18	0+63	16' LT BLACK POWDER COURT
19	5+15	19' RT
20	6+09	19' RT
21	SEE PLAN	

REVIEWED FOR HOWARD SOIL CONSERVATION DISTRICT AND MEETS TECHNICAL REQUIREMENT  
 Signature: *James M. Helm* DATE: 11-6-85  
 U.S. SOIL CONSERVATION SERVICE

THIS DEVELOPMENT PLAN IS APPROVED FOR SOIL EROSION AND SEDIMENT CONTROL BY THE HOWARD COUNTY CONSERVATION DISTRICT.  
 APPROVED: *Stephen L. Hulser* DATE: 11/6/85  
 HOWARD S.C.D.

SEDIMENT CONTROL MEASURE FOR THIS CONTRACT WILL BE IMPLEMENTED IN ACCORDANCE WITH ARTICLE 15 OF THE STANDARD SPECIFICATIONS AND ROAD CONSTRUCTION PLAN F-85-151 AND S.D.P-85-202

DEPARTMENT OF PUBLIC WORKS  
 HOWARD COUNTY, MARYLAND  
 Director of Public Works - DATE: 11-12-85  
 Chief - Bureau of Utilities - DATE: 11/6/85  
 Chief - Land Development Division - DATE: 11/6/85

KMWM CORPORATION  
 engineers planners surveyors  
 13321 New Hampshire Av., Suite 300  
 Silver Spring, MD 20904



DES:	
DRN:	
CHK:	
DATE:	11/6/85
BY:	TLR
NO.:	1
REVISION:	APPROV @ 12:00 AM TO QUANTITIES LIST

VICINITY MAP AND GENERAL NOTES  
 600 SCALE MAP NO. 37 BLOCK NO.

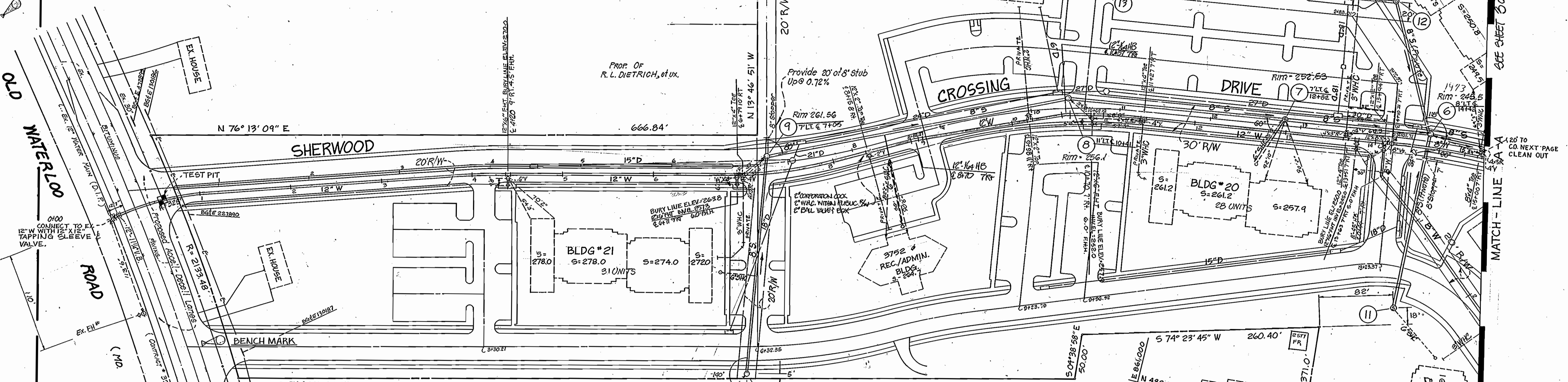
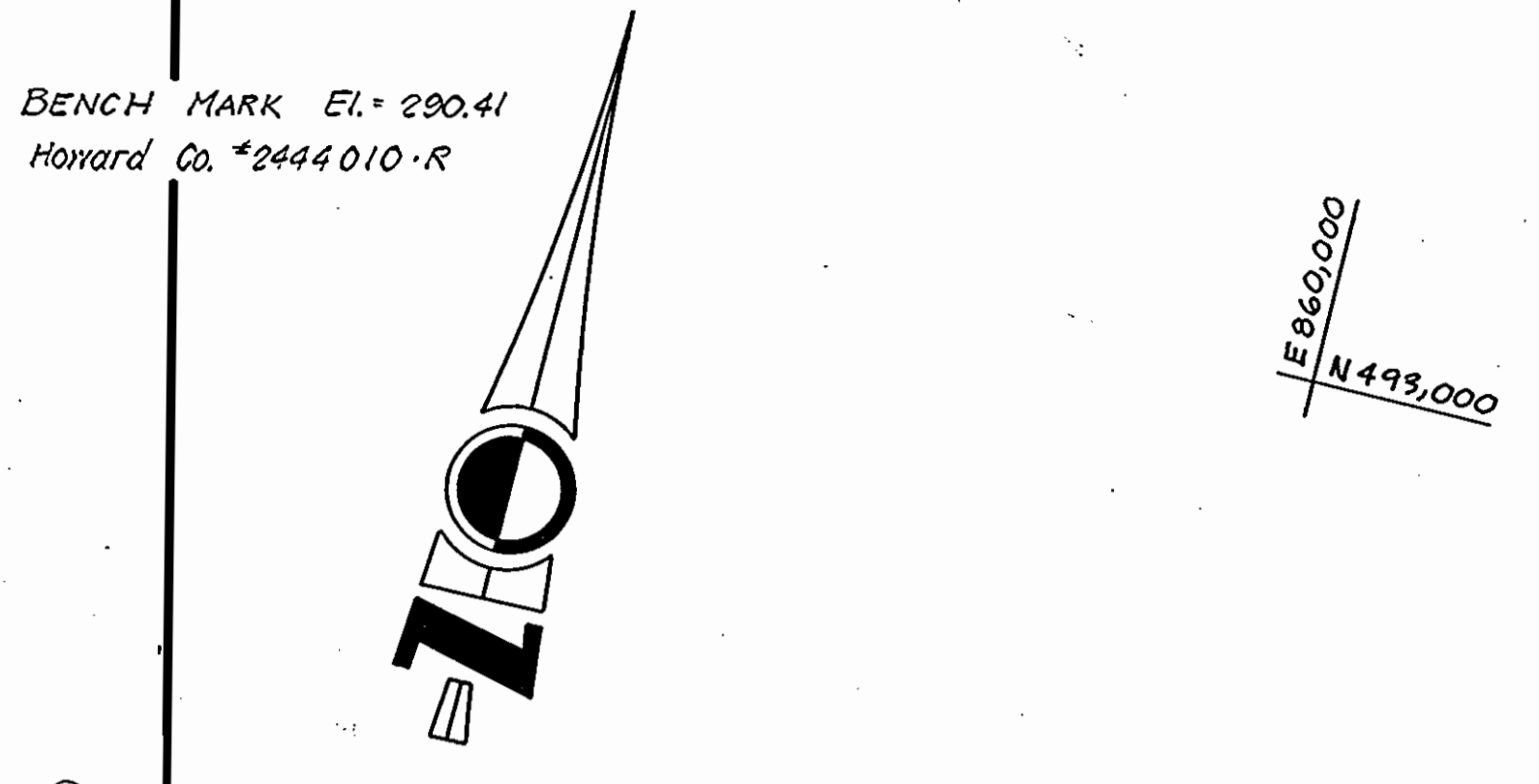
SHERWOOD CROSSING  
 PARCEL "A"  
 FIRST ELECTION DISTRICT  
 HOWARD COUNTY, MARYLAND  
 CONTRACT NO. 14-1390-D  
 SCALE SHEET 1 OF 6

BENCH MARK EL. 290.41  
Howard Co. \*2444010-R

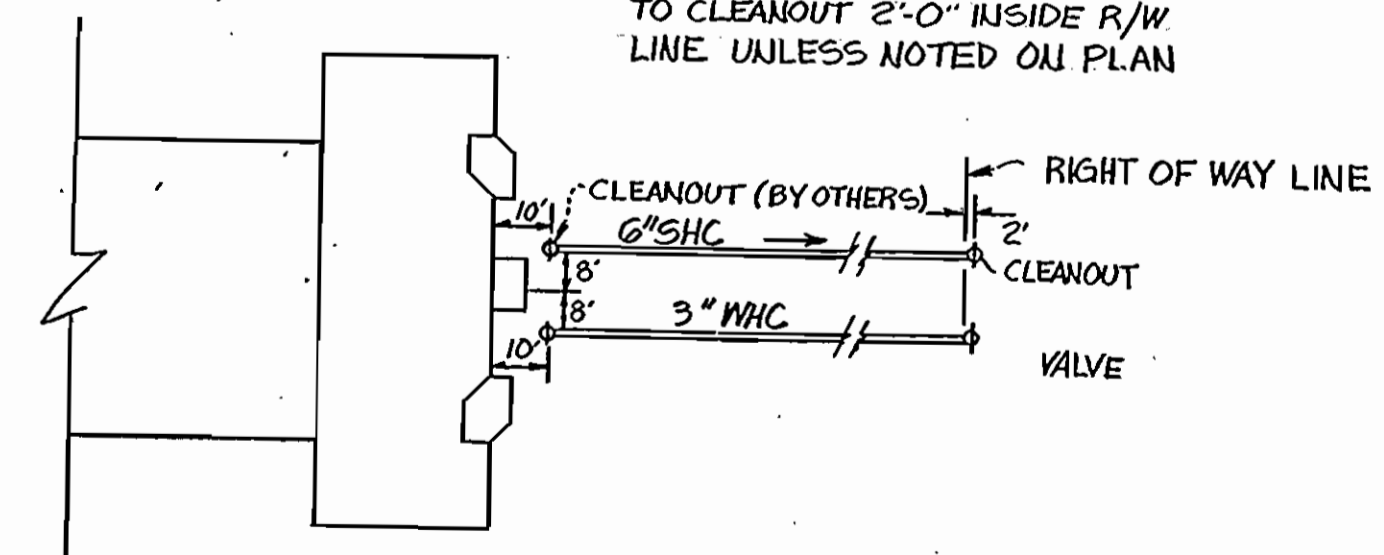
OLD WATER LOO ROAD

ROAD

BENCH MARK EL. 292.10  
Howard Co. \*2444009-R  
N. 492478.559  
E. 859992.308



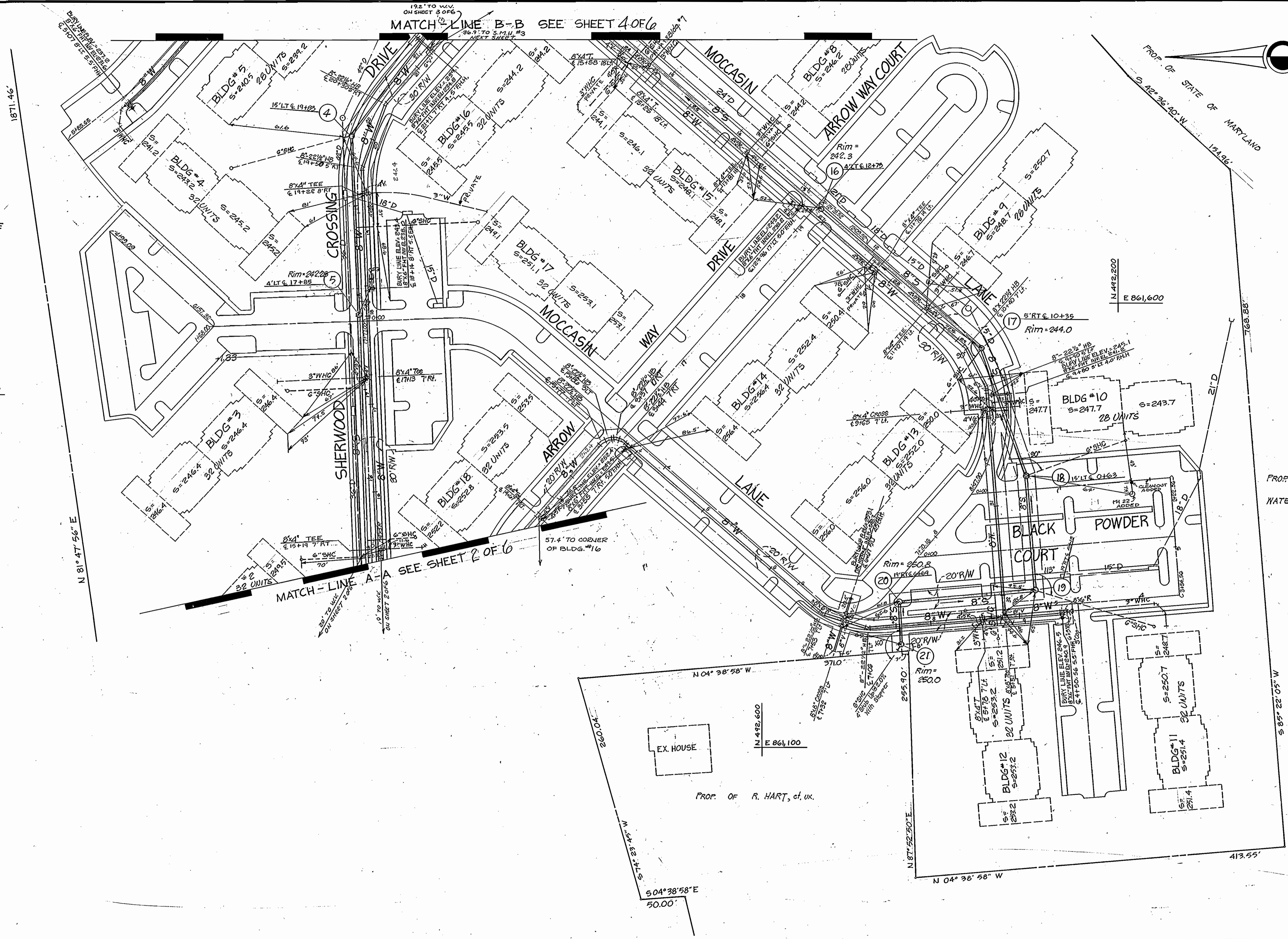
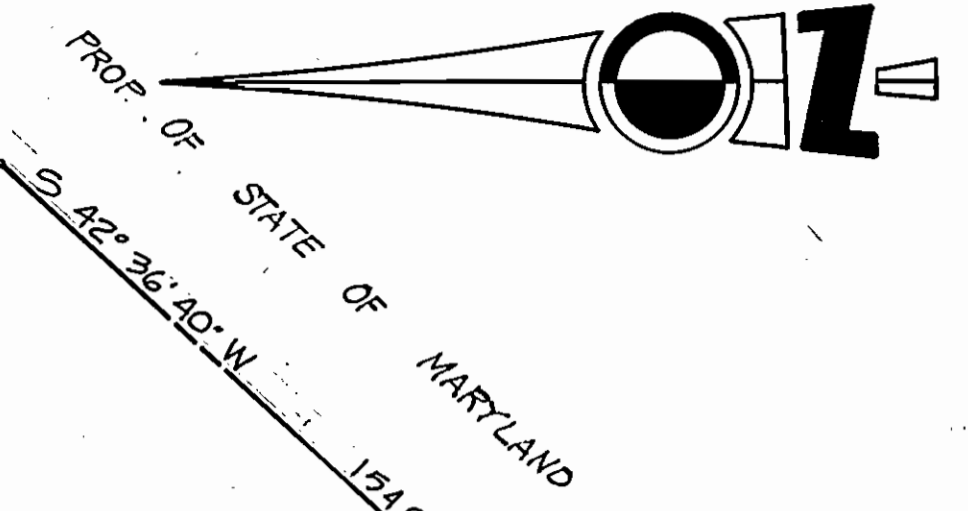
NOTE: ALL SHC SHALL CONNECT TO CLEANOUT 2'-0" INSIDE R/W LINE UNLESS NOTED ON PLAN



TYPICAL WATER & SEWER HOUSE CONNECTIONS

DEPARTMENT OF PUBLIC WORKS HOWARD COUNTY, MARYLAND 11-12-85 DIRECTOR OF PUBLIC WORKS - DATE Robert Wood for RMB 11/18/85 CHIEF - BUREAU OF UTILITIES - DATE		KMWM CORPORATION engineers planners surveyors 13321 New Hampshire Av., Suite 300 Silver Spring, MD 20904		DES.: DRN.: CHK.: DATE:		PLAN OF WATER & SEWER MAINS		SHERWOOD CROSSING PARCEL "A" FIRST ELECTION DISTRICT HOWARD COUNTY, MARYLAND CONTRACT NO. 14-1390-D		SCALE 1"=50' SHEET 2 OF 6
11-12-85 Robert Wood for RMB 11/18/85 CHIEF - BUREAU OF UTILITIES - DATE		11-12-85 Robert Wood for RMB 11/18/85 CHIEF - LAND DEVELOPMENT DIVISION - DATE		TLR BY NO. REVISION DATE		CHANGE HOR. WATER LOCATION BETWEEN R.S.A. 8702-10-31 10/19/85 600 SCALE MAP NO. 37 BLOCK NO.		AS-BUILT: JOHN E. HARMS JR. AND ASSOC. OCT. 1986		

PROP. OF  
NORTH AMERICAN MOBILE  
HOME, INC.



PROP. OF  
WATERLOO LIMITED  
PARTNERSHIP

PROP. OF R. HART, et. ux.

DEPARTMENT OF PUBLIC WORKS  
 HOWARD COUNTY, MARYLAND  
 Director of Public Works - DATE  
 Chief - Bureau of Engineering - DATE  
 Chief - Bureau of Utilities - DATE  
 Chief - Land Development Division - DATE

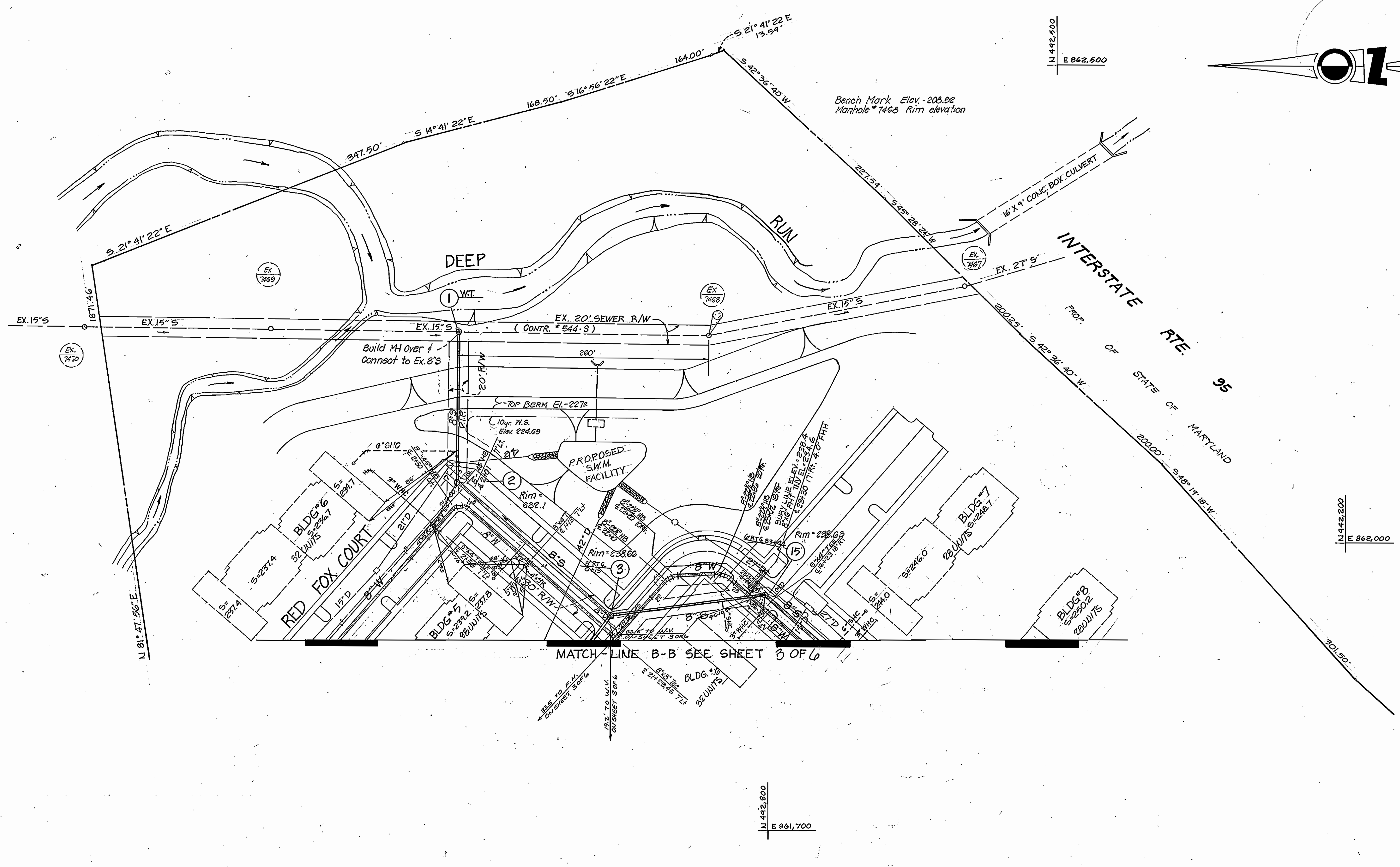
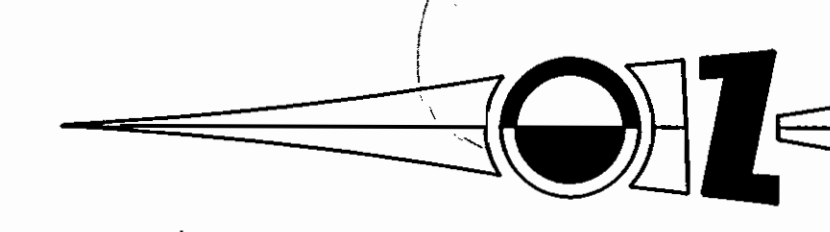
KMWM CORPORATION  
 engineers planners surveyors  
 13321 New Hampshire Av., Suite 300  
 Silver Spring, MD 20904



DES: DP	
DRN: JCS	
CHK:	
DATE:	
BY:	
NO.:	
REVISION:	
DATE:	

PLAN OF  
 WATER & SEWER MAINS  
 600 SCALE MAP NO. 37 BLOCK NO.

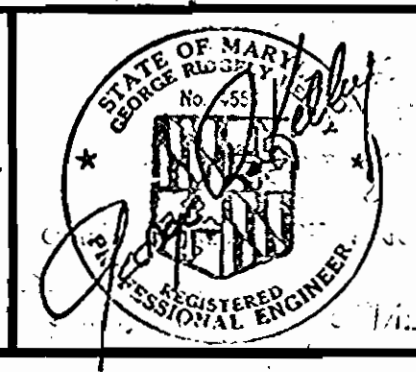
**SHERWOOD CROSSING**  
 PARCEL "A"  
 FIRST ELECTION DISTRICT  
 HOWARD COUNTY, MARYLAND  
 CONTRACT NO. 14-1390-D  
 SCALE 1" = 50'  
 SHEET 2 OF 6



MATCH LINE B-B SEE SHEET 3 OF 6

DEPARTMENT OF PUBLIC WORKS  
 HOWARD COUNTY, MARYLAND  
 Director: *Robert Wood* 11-D-85  
 Chief - Bureau of Utilities - DATE  
 Chief - Land Development Division - DATE

KMWM CORPORATION  
 engineers planners surveyors  
 13321 New Hampshire Av., Suite 300  
 Silver Spring, MD 20904



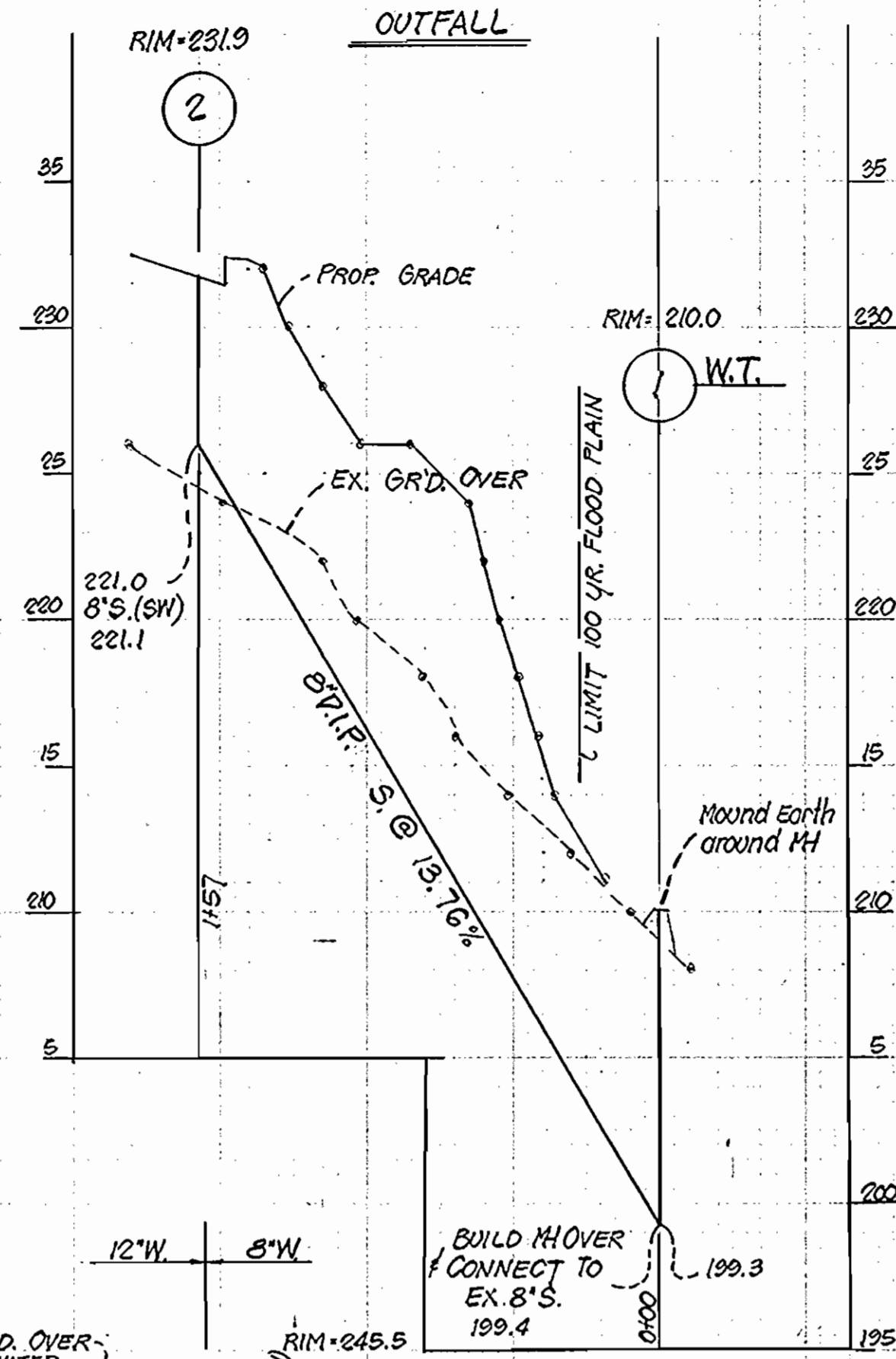
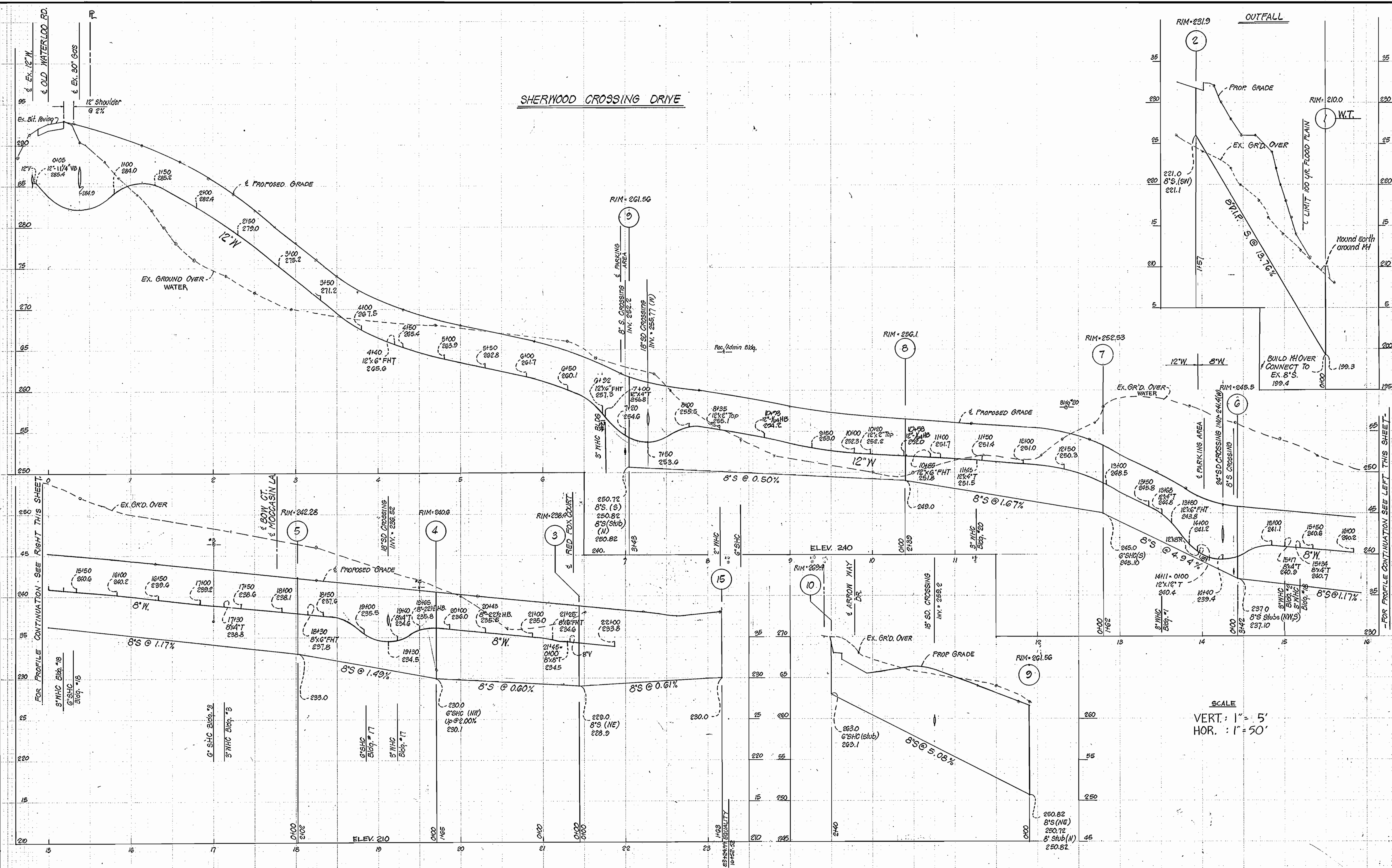
DES:	
DRN:	
CHK:	
DATE:	11/1/85
BY:	ILR
NO.:	1
REVISION:	CHANGE SHEET NOS AT MATCH LINE
DATE:	11/1/85

PLAN OF  
 WATER & SEWER MAINS  
 600 SCALE MAP NO. 37 BLOCK NO.

**SHERWOOD CROSSING**  
 PARCEL "A"  
 FIRST ELECTION DISTRICT  
 HOWARD COUNTY, MARYLAND  
 CONTRACT NO. 14-1390-D

SCALE  
 1" = 50'  
 SHEET  
 4 OF 5

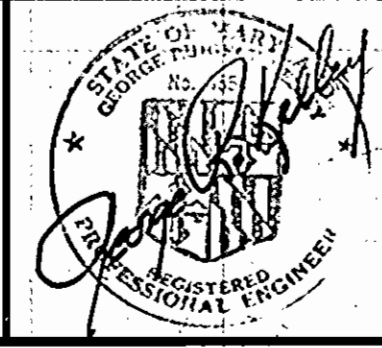
SHERWOOD CROSSING DRIVE



SCALE  
VERT. : 1" = 5'  
HOR. : 1" = 50'

DEPARTMENT OF PUBLIC WORKS  
HOWARD COUNTY, MARYLAND  
11-12-85  
DIRECTOR OF PUBLIC WORKS - DATE  
CHIEF - BUREAU OF ENGINEERING - DATE  
CHIEF - BUREAU OF UTILITIES - DATE  
CHIEF - LAND DEVELOPMENT DIVISION - DATE

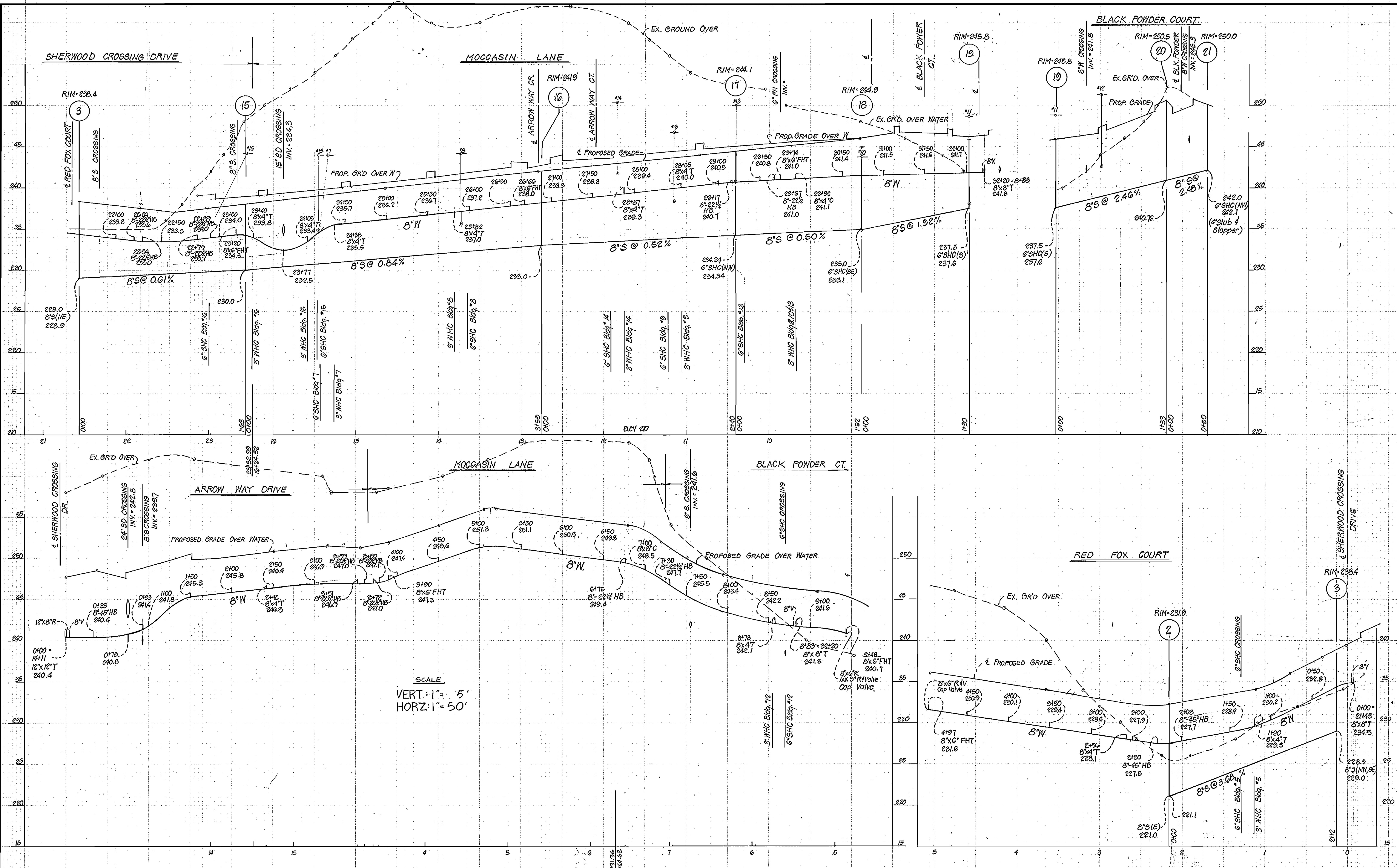
KMWM CORPORATION  
engineers planners surveyors  
13321 New Hampshire Av, Suite 300  
Silver Spring, MD 20904



DES. DD	
DRN. DD	
CHK. 1	
DATE	11/18/85
BY NO.	
REVISION	

PROFILE OF  
WATER & SEWER MAINS  
600 SCALE MAP NO. 37 BLOCK NO.

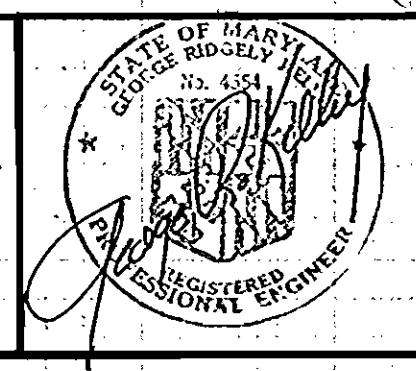
SHERWOOD CROSSING  
PARCEL "A"  
FIRST ELECTION DISTRICT  
HOWARD COUNTY, MARYLAND  
CONTRACT NO. 14-1390-D  
SCALE AS SHOWN  
SHEET 5 OF 6



SCALE  
 VERT.: 1" = 5'  
 HORIZ.: 1" = 50'

DEPARTMENT OF PUBLIC WORKS  
 HOWARD COUNTY, MARYLAND  
 Director of Public Works - DATE 11-12-85  
 Chief - Bureau of Engineering - DATE  
 Chief - Bureau of Utilities - DATE  
 Chief - Land Development Division - DATE

KMWM CORPORATION  
 engineers planners surveyors  
 13321 New Hampshire Av., Suite 300  
 Silver Spring, MD 20904



DES.:	
DRN.:	
CHK.:	
DATE:	11/21/85
BY:	TLR
NO.:	1
REVISION:	ADD 8\"/>
DATE:	11/21/85

PROFILE OF  
 WATER & SEWER MAINS  
 600 SCALE MAP NO. 37 BLOCK NO.

SHERWOOD CROSSING  
 PARCEL "A"  
 FIRST ELECTION DISTRICT  
 HOWARD COUNTY, MARYLAND  
 CONTRACT NO. 14 - 1390 - D  
 SCALE AS SHOWN  
 SHEET 6 OF 6