

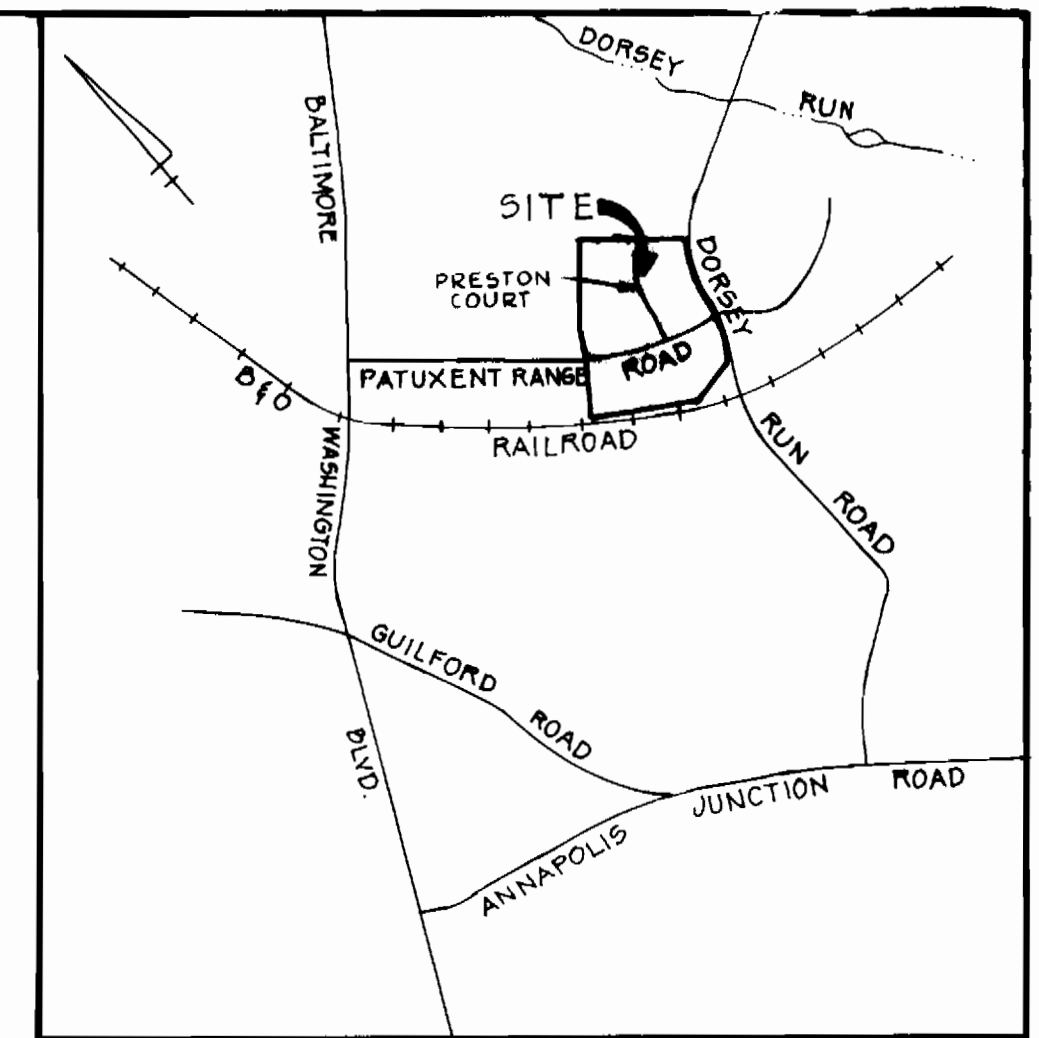
BALTIMORE WASHINGTON INDUSTRIAL PARK

DEPARTMENT OF PUBLIC WORKS

6TH. ELECTION DISTRICT

HOWARD COUNTY, MARYLAND

CONTRACT NO. 24 - 1380 - D



LOCATION PLAN
SCALE: 1" = 2000'

BENCH MARKS

P+J BM #4
R.R. SPIKE SET IN CIP PILE #263650, S. SIDE
DORSEY RUN ROAD. ELEV. 211.740

P+J BM #7
R.R. SPIKE SET IN GIE POLE #263650, S. SIDE
DORSEY RUN ROAD. ELEV. 177.244

TYPE OF BUILDING:	WAREHOUSING
NO. OF LOTS	5
NUMBER OF WATERHOUSE CONN.	5
NUMBER OF SEWERHOUSE CONN.	5
DRAINAGE AREA	DORSEY RUN
WATER & SEWER CODE	
SEWER CODE	302,0000
WATER CODE	302

NOTE: BUILDING PERMITS WILL NOT BE ISSUED UNTIL THE DORSEY RUN PUMP STATION (CONTRACT NO. 678-6) IS COMPLETED AND PLACED IN SERVICE.

GENERAL NOTES:

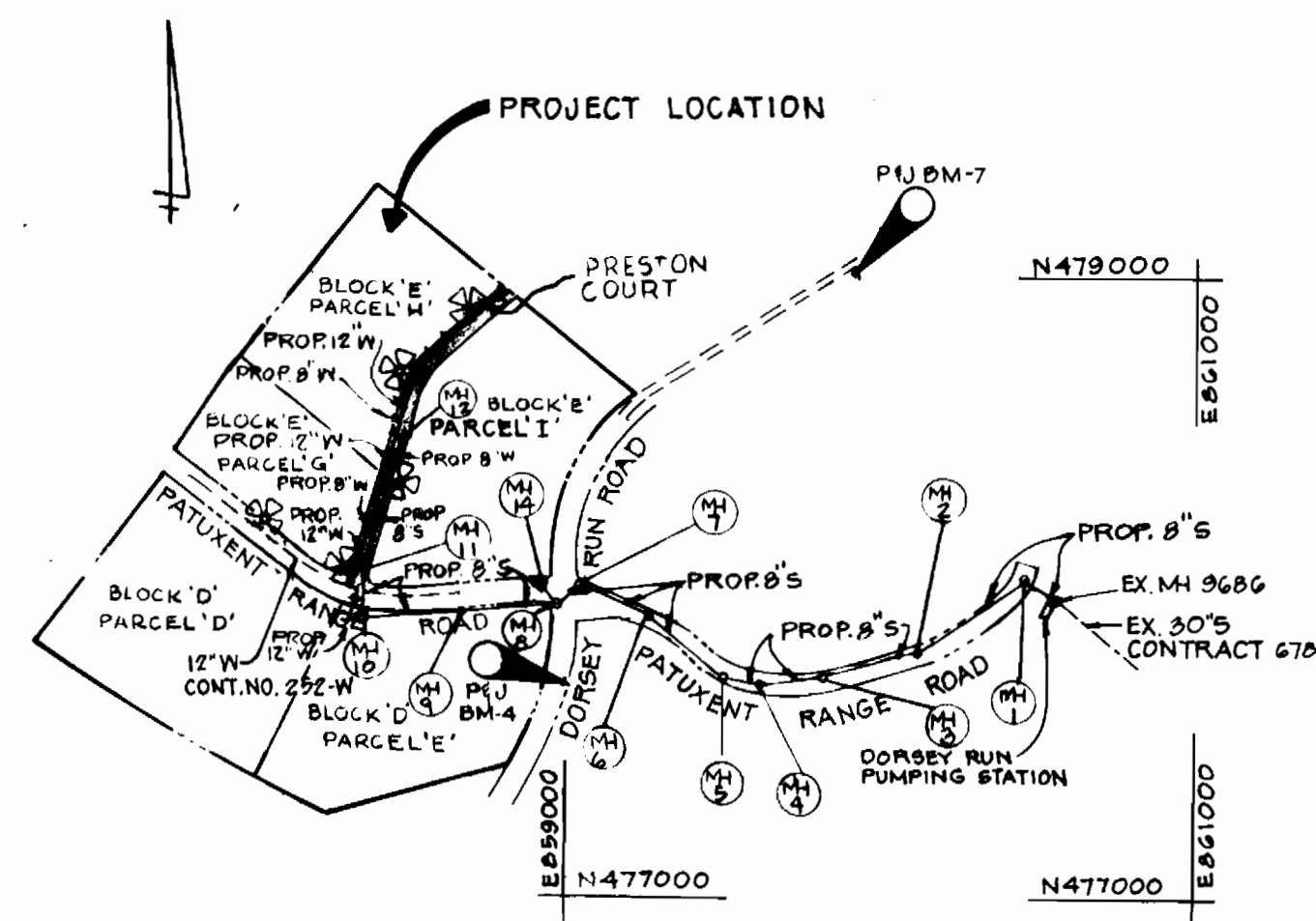
- PART I
- APPROXIMATE LOCATION OF EXISTING MAINS ARE SHOWN. THE CONTRACTOR SHALL TAKE ALL NECESSARY PRECAUTIONS TO PROTECT EXISTING MAINS AND SERVICES AND MAINTAIN UNINTERRUPTED SUPPLY. ANY DAMAGE INCURRED SHALL BE REPAIRED IMMEDIATELY TO THE SATISFACTION OF THE ENGINEER, AT THE CONTRACTOR'S EXPENSE.
 - ALL HORIZONTAL CONTROLS ARE BASED ON MARYLAND STATE COORDINATES.
 - ALL VERTICAL CONTROLS ARE BASED ON U.S.G.S. DATUM.
 - ALL PIPE ELEVATIONS SHOWN ARE INVERT ELEVATIONS.
 - CLEAR ALL UTILITIES BY A MINIMUM OF 6". CLEAR ALL POLES BY 2'-0" MIN. OR TUNNEL AS REQUIRED. ANY COST INCURRED TO THE CONTRACTOR FOR TUNNELING OR BRACING AT POLES SHALL BE INCLUDED IN UNIT PRICES BID FOR EXCAVATION AND BACKFILL.
 - FOR DETAILS NOT SHOWN ON DRAWINGS USE HOWARD COUNTY STANDARD DETAILS.
 - FOR MATERIALS AND CONSTRUCTION METHODS USE HOWARD COUNTY STANDARD SPECIFICATIONS.
 - CONTRACTOR SHALL LOCATE EXISTING UTILITIES A MINIMUM OF TWO (2) WEEKS IN ADVANCE OF CONSTRUCTION OPERATIONS IN THE VICINITY OF PROPOSED UTILITIES AT HIS OWN EXPENSE.
 - CONTRACTOR SHALL NOTIFY THE FOLLOWING UTILITIES OR AGENCIES AT LEAST FIVE (5) WORKING DAYS BEFORE STARTING WORK SHOWN ON THESE PLANS:
 - STATE HIGHWAY ADMINISTRATION: 531-5533
 - BALTIMORE GAS AND ELECTRIC CO. - UNDERGROUND ELECTRIC DISTRIBUTION (CUSTOMER SERVICE): 685-0123
 - BALTIMORE GAS AND ELECTRIC CO. - UNDERGROUND GAS DISTRIBUTION (CUSTOMER SERVICE): 685-0123
 - ENGINEERING "DAMAGE CONTROL": 234-5621
 - "MISS UTILITY": 559-0100
 - CHESAPEAKE AND POTOMAC (C & P) TELEPHONE COMPANY: 725-9976
 - AMERICAN TELEPHONE AND TELEGRAPH - CABLE LOCATION DIV.: 393-3553
 - COLONIAL PIPELINE COMPANY: 781-4641
 - BUREAU OF UTILITIES HOWARD COUNTY: 992-2366
 - TREES ARE TO BE PROTECTED FROM DAMAGE TO MAXIMUM EXTENT. TREES LOCATED WITHIN THE CONSTRUCTION STRIP ARE NOT TO BE REMOVED OR DAMAGED BY THE CONTRACTOR.
 - CONTRACTOR SHALL REMOVE TREES, STUMPS AND ROOTS ALONG LINE OF EXCAVATION AS DIRECTED BY THE ENGINEER. PAYMENT FOR SUCH REMOVAL SHALL BE INCLUDED IN THE UNIT PRICE BID FOR EXCAVATION AND BACKFILL.
 - PLACE REGULATION "MEN WORKING" AND WARNING SIGNS AS REQUIRED TO COMPLY WITH MARYLAND STATE HIGHWAY ADMINISTRATION MANUAL OF TRAFFIC CONTROL FOR HIGHWAY CONSTRUCTION AND MAINTENANCE OPERATIONS.

PART II

- ALL WATER MAINS TO BE C.I.P. OR D.I.P. UNLESS OTHERWISE NOTED.
- TOP OF ALL WATER MAINS TO HAVE A MINIMUM OF 3'¹/₂' COVER UNLESS OTHERWISE NOTED.
- VALVES ADJACENT TO TEES SHALL BE STRAPPED TO TEES.
- BLOCK ALL FITTINGS WITH CONCRETE.
- BURY LINE ELEVATIONS ON FIRE HYDRANTS SHALL BE SET TO THE ELEVATIONS SHOWN ON THE DRAWINGS. ALL FIRE HYDRANTS SHALL BE STRAPPED AND BUTTRESSED WITH CONCRETE IN ACCORDANCE WITH STANDARD DETAILS. SOIL AROUND THE FIRE HYDRANT TO BE COMPACTED IN ACCORDANCE WITH SECT. 1003 & 1008 OF THE STANDARD SPECIFICATIONS.
- THE CONTRACTOR SHALL NOT OPERATE ANY WATER MAIN VALVES ON THE EXISTING SYSTEM.

PART III

- ALL SEWER MAINS SHALL BE C.S.P.X., R.C.S.P., V.C.P.X., A.C.P. CLASS 2400 OR P.V.C. UNLESS OTHERWISE NOTED.
- THE CONTRACTOR SHALL PROVIDE A JOINT IN ALL SEWER MAINS WITHIN 2'-0" OF EXTERIOR MANHOLE WALL.
- ALL MANHOLES SHALL BE 4'-0" INSIDE DIAMETER UNLESS OTHERWISE NOTED.
- MANHOLES SHOWN WITH 12" AND 16" WALLS ARE BRICK MANHOLES ONLY.
- MANHOLES DESIGNATED W.T. IN PLAN AND PROFILE SHALL HAVE WATERTIGHT FRAME AND COVERS, STANDARD DETAIL G-5.52 WHERE WATERTIGHT MANHOLE FRAME AND COVER IS USED, SET TOP OF FRAME 1'-6" ABOVE FINISHED GRADE UNLESS OTHERWISE NOTED ON THE DRAWINGS.



PLAN
SCALE: 1"=600'

INDEX OF SHEETS

SHEET NO.	DESCRIPTION
1	TITLE SHEET
2	12" WATER MAIN - 8" SANITARY SEWER PLAN AND PROFILE
3	8" SANITARY SEWER PLAN AND PROFILE
4	8" SANITARY SEWER PLAN AND PROFILE
5	8" SANITARY SEWER PLAN AND PROFILE

QUANTITIES				
ITEM	UNIT	ESTIMATED	AS-BUILT	MATERIAL SUPPLIER
8" SEWER	LF	3099	3099	SDR-35 PVC NATIONAL
MANHOLE	NO.	13	13	ATLANTIC PRECAST
8" WATER	LF	140	130	CLASS 52 SKIFFIN
8" VALVE	NO.	0	0	M&H VALVE CO.
12" WATER	LF	1205	1205	CLASS 52 SKIFFIN
12" VALVE	NO.	3	3	M&H VALVE CO.
FIRE HYDRANT	NO.	4	4	M&H 927 FIRE HID
12x12 TAPPING SL.	EA.	2	2	M&H TAP SLV
SAN. HOUSE CONN.	EA.	5	5	SDR-35 PVC NATIONAL

SEDIMENT CONTROL NOTES

- FOR SEDIMENT CONTROL FOR THIS CONTRACT SEE THE APPROVED ROAD CONSTRUCTION PLANS FOR FILE
- MATERIAL FROM TRENCH EXCAVATION TO BE PLACED ON UPHILL SIDE OF TRENCH.
- CONTRACTOR TO BACKFILL, COMPACT AND STABILIZE IMMEDIATELY AFTER INSTALLATION OF PIPE. NO TRENCHES WILL BE LEFT OPEN AT THE END OF EACH DAY, EXCEPT THAT PORTION WHERE WORK HAS STOPPED.
- ANY SEDIMENT CONTROL FACILITIES ENCOUNTERED DURING PIPE CONSTRUCTION TO BE RETURNED TO ORIGINAL CONDITION IMMEDIATELY UPON COMPLETION OF THAT PORTION OF WORK.
- SEDIMENT CONTROL MEASURES FOR THIS CONTRACT WILL BE IMPLEMENTED IN ACCORDANCE WITH ARTICLE 15 OF THE HOWARD COUNTY STANDARD SPECIFICATIONS AND AS PER ROAD CONSTRUCTION PLANS F-86-31

REVIEWED FOR HOWARD SOIL CONSERVATION DISTRICT AND MEETS TECHNICAL REQUIREMENT. *James M. Hahn* 12/5/85
Signature Date
U.S. SOIL CONSERVATION SERVICE

THIS DEVELOPMENT PLAN IS APPROVED FOR SOIL EROSION AND SEDIMENT CONTROL BY THE HOWARD COUNTY CONSERVATION DISTRICT.
APPROVED *Stephen J. Huber* 12-5-85
Signature Date
HOWARD S.C.D.

DEPARTMENT OF PUBLIC WORKS
HOWARD COUNTY, MARYLAND

Robert M. Reisinger 12-6-85
Signature Date
DIRECTOR OF PUBLIC WORKS

William E. P. ... 12-6-85
Signature Date
CHIEF - BUREAU OF ENGRG. & CONSTRUCTION

CENTURY ENGINEERING, INC.
CONSULTING ENGINEERS PLANNERS

32 WEST ROAD
TOWSON, MARYLAND 21284

George R. Klara 4-18-85
Signature Date
PRINCIPAL

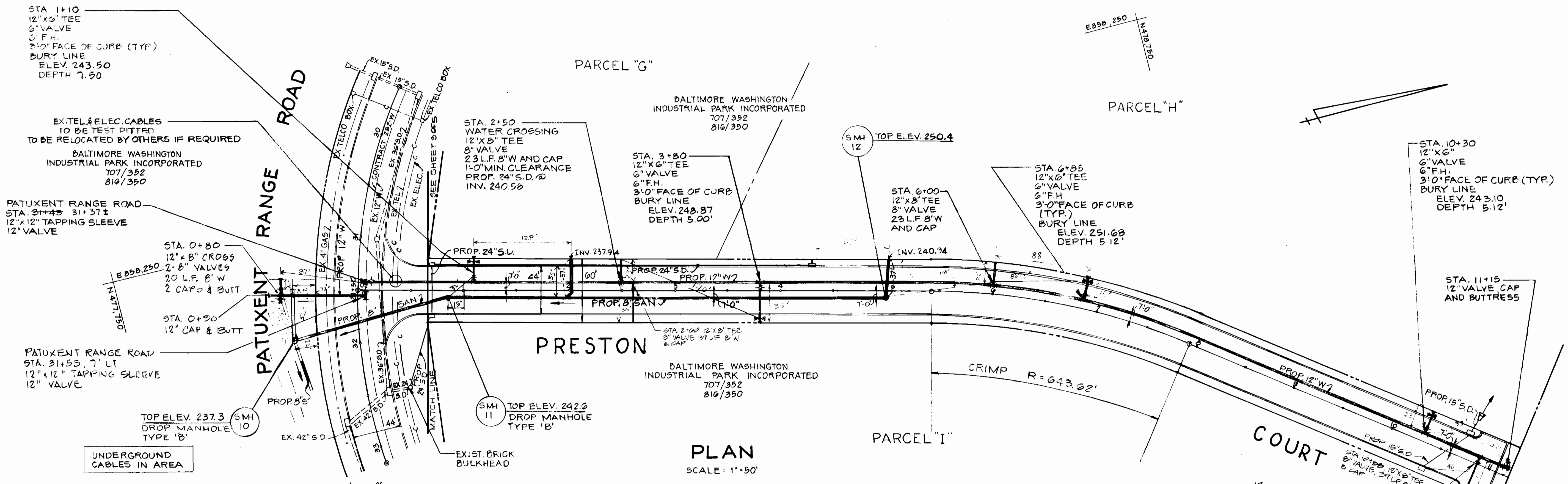
BY	NO.	REVISION	DATE
GAH	0	REVISED QUANTITIES	2-25-84
JF	1	REVISED QUANTITIES	12/20/85
CPZ	4	ADD COUNTY NOTE	12-7-85
J.H.C.	3	ADDED ROAD NAMES & COMPLETED INFORMATION BLOCKS, CHANGED LOT NUMBERS	7-25-85
J.H.C.	2	CHANGED PLAN AND QUANTITIES	6-29-85
J.A.G.	1	CHANGED SHEET NO.	5-24-85
J.A.G.	1	CHANGED PLAN AND QUANTITIES	5-24-85

12" WATER
8" SANITARY SEWER
PLAN AND PROFILE

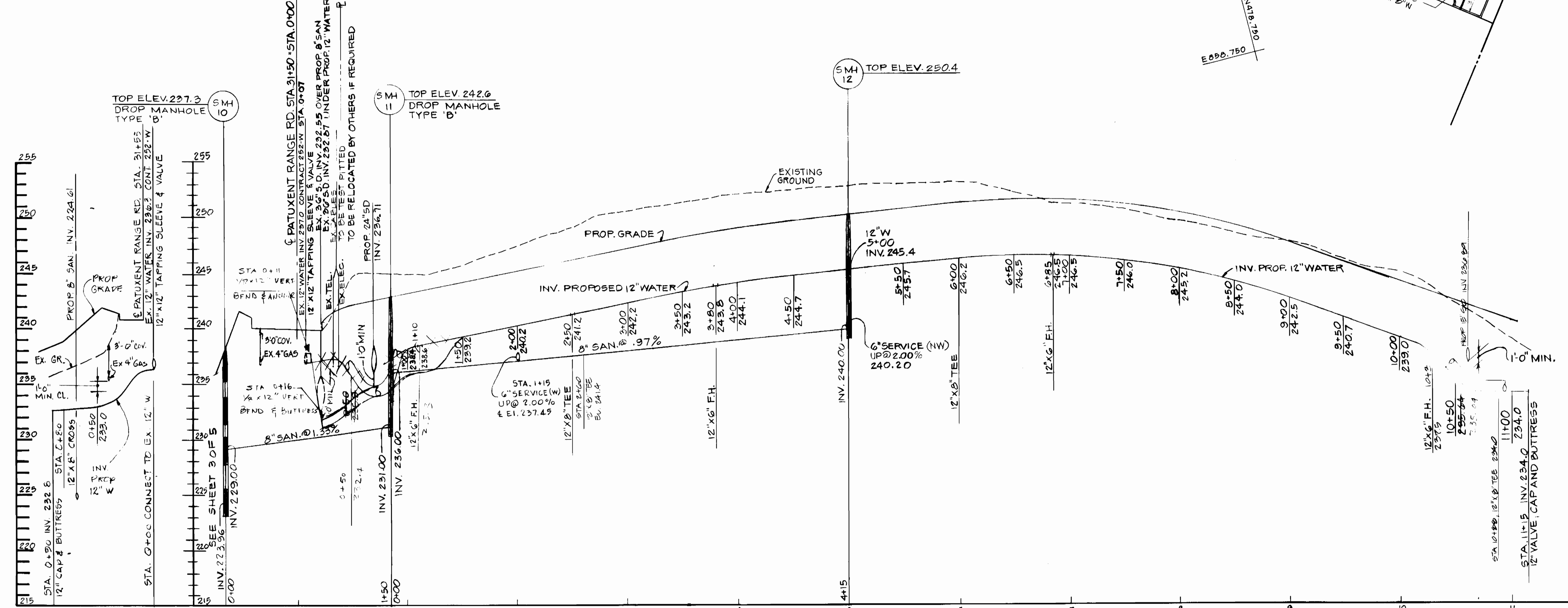
BALTIMORE WASHINGTON INDUSTRIAL PARK
PARCELS 'D' & 'E' - BLOCK 'D'
AND
PARCELS 'G', 'H' & 'I' - BLOCK 'E'

CONTRACT NO. 24-1380-D
6th. ELECTION DISTRICT
HOWARD COUNTY, MARYLAND

SCALE AS SHOWN
SHEET 1 OF 5



PLAN
SCALE: 1"=50'



PROFILE
SCALE: HOR. 1"=50'
VERT. 1"=5'

NO.	BY	NO.	REVISION	DATE
1	J.A.G.	1	CHANGED LOCATION OF SAN SERVICE, CHANGED WATER PROFILE @ STA 10+75 AND 15+50	6-24-85
2	J.A.G.	2	CHANGED LOCATION OF SMH 10	6-25-85
3	J.A.G.	3	CHANGED LOCATION OF F.H. AT 0+60 ON PRESTON COURT TO 1+10 ON PRESTON COURT	7-23-85
4	J.H.C.	4	ADDED INVEL. OF SHC AT PROPERTY LINE	10-16-85
5	J.H.C.	5	LOWERED INV. @ SMH 10	10-28-85

DEPARTMENT OF PUBLIC WORKS
HOWARD COUNTY, MARYLAND

DIRECTOR OF PUBLIC WORKS
Robert D. ...
DATE: 12-6-85

CHIEF BUREAU OF UTILITIES

CENTURY ENGINEERING, INC.
CONSULTING ENGINEERS PLANNERS

32 WEST ROAD
TOWSON, MARYLAND 21204

301-823-8070

CHIEF BUREAU OF ENGINEERING
Gregory R. Klar
DATE: 4/18/85

CHIEF LAND DEVELOPMENT DIVISION

DES: J.A.G.
DRN: J.A.G.
CHK: G.K.DATE: 4/18/85

12" WATER MAIN
8" SANITARY SEWER
PLAN AND PROFILE
PRESTON COURT

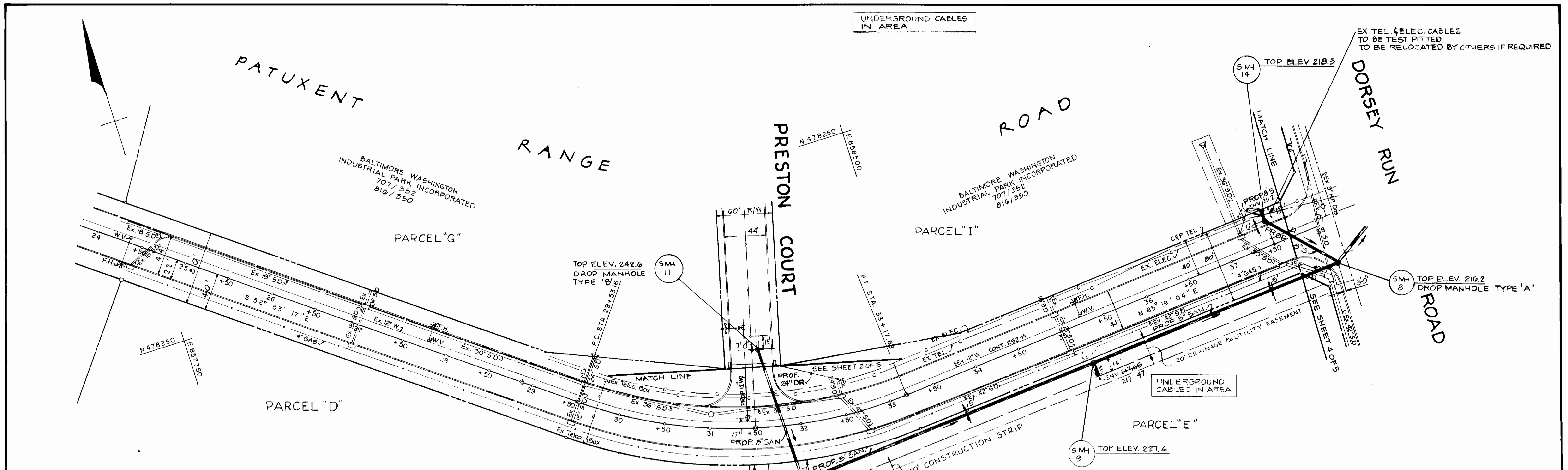
600' SCALE MAP NO. 220-43, 220-44 BLOCK NO.

BALTIMORE WASHINGTON INDUSTRIAL PARK
PARCELS 'D' & 'E' - BLOCK 'D'
AND
PARCELS 'G', 'H' & 'I' - BLOCK 'E'

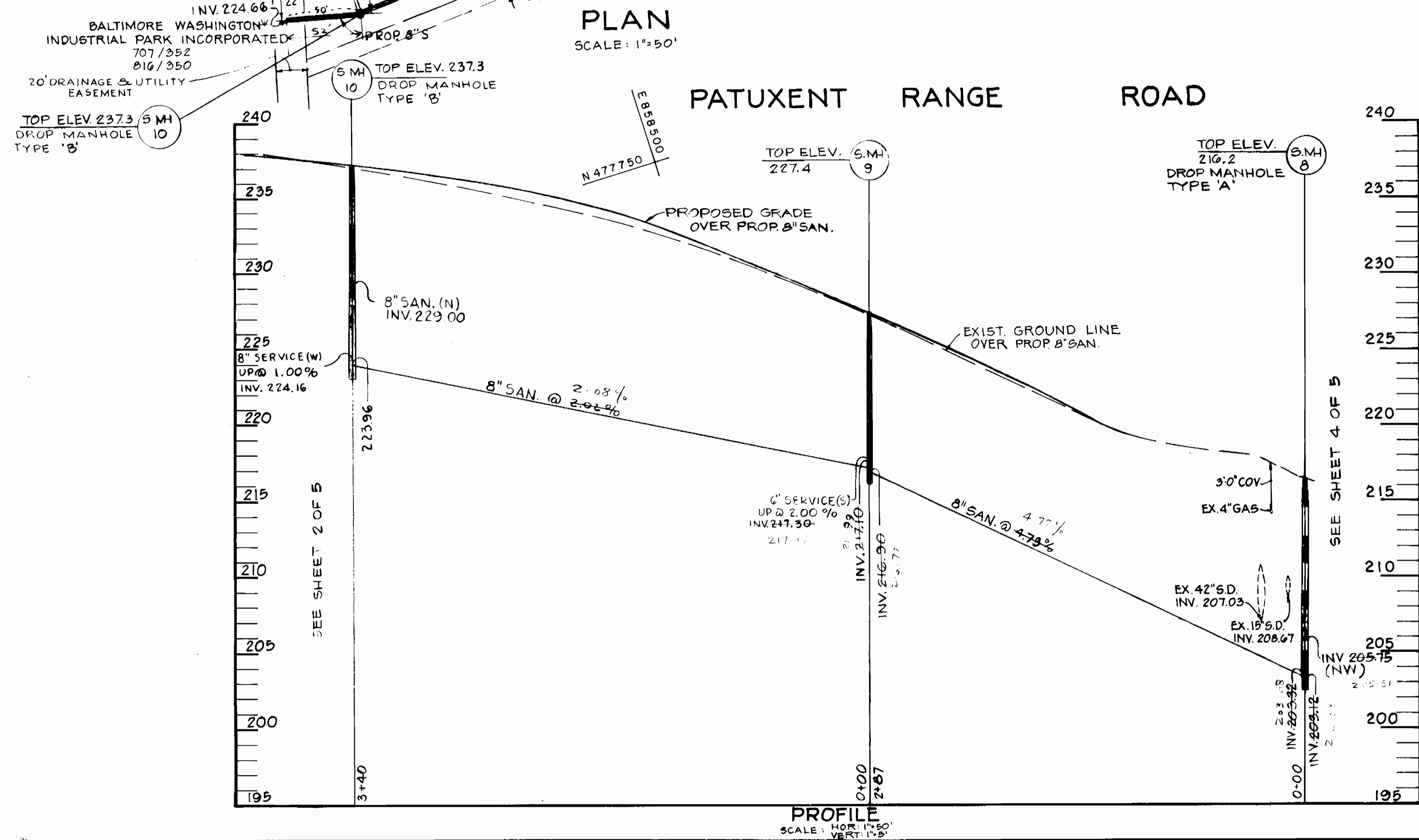
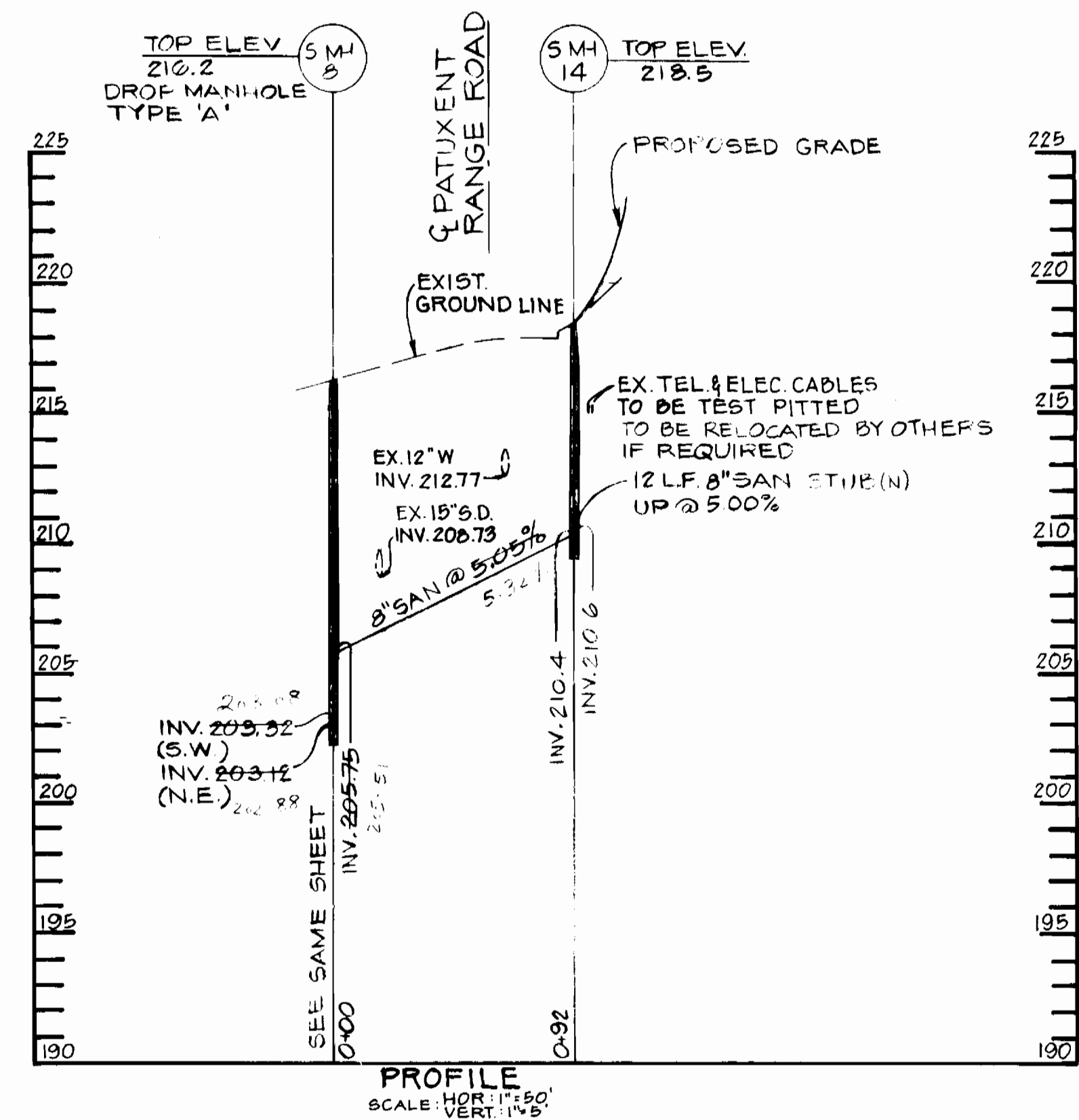
6th ELECTION DISTRICT
HOWARD COUNTY, MARYLAND

Cont. No. 24-1380-D

SCALE AS SHOWN
SHEET 2 OF 5



ACROSS PATUXENT RANGE ROAD



DEPARTMENT OF PUBLIC WORKS
HOWARD COUNTY, MARYLAND

John F. Neuman 12-6-85
DIRECTOR OF PUBLIC WORKS DATE

Michael J. ... 12-6-85
CHIEF BUREAU OF UTILITIES DATE

CENTURY ENGINEERING, INC.
CONSULTING ENGINEERS PLANNERS

32 WEST ROAD
TOWSON, MARYLAND 21204

301-823-8070

Gregory R. Klar 4/18/85
GREGORY R. KLAR DATE

DES.	J.A.G.	J.H.C.	5	LOWERED SAN. BETWEEN SMH 9 & SMH 10	10-24-85
DRN.	J.A.G. & P.D.C.	J.H.C.	4	ADDED INV. EL. OF SHC AT PROPERTY LINE	10-16-85
		J.H.C.	3	ADDED NUMBER OF MH ON PRESTON COURT	7-23-85
CHK.	G.K.	J.A.G.	2	CHANGED LOCATIONS OF SMH 8, 14, 10	6-25-85
		J.A.G.	1	ADDED SMH 14 & PROFILE, CHANGE SHEET NO.	5-24-85

DATE: 4/18/85 BY NO. REVISION DATE

8" SANITARY SEWER
PATUXENT RANGE ROAD
PLAN AND PROFILE
STA. 32+00 TO STA. 38+00

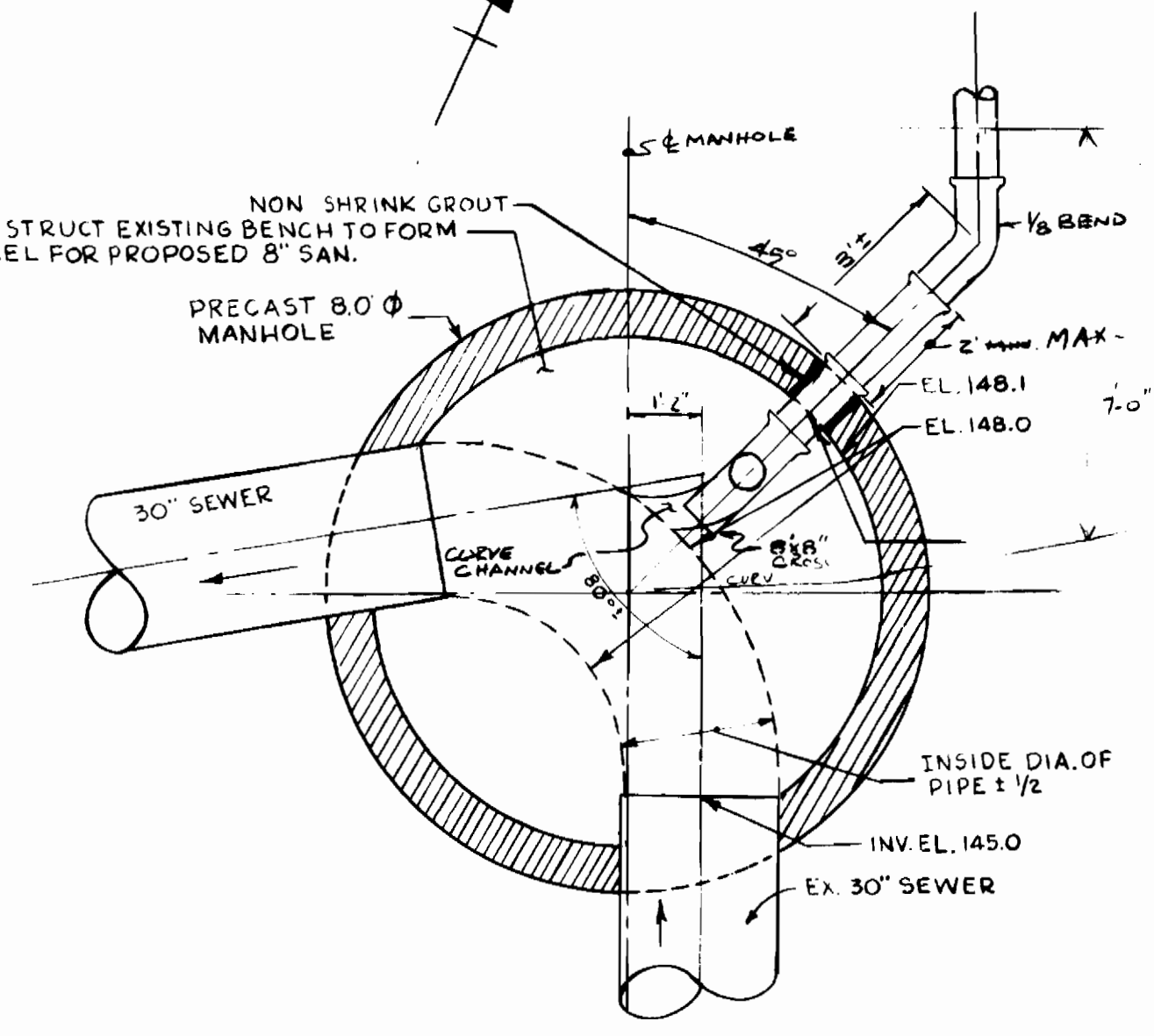
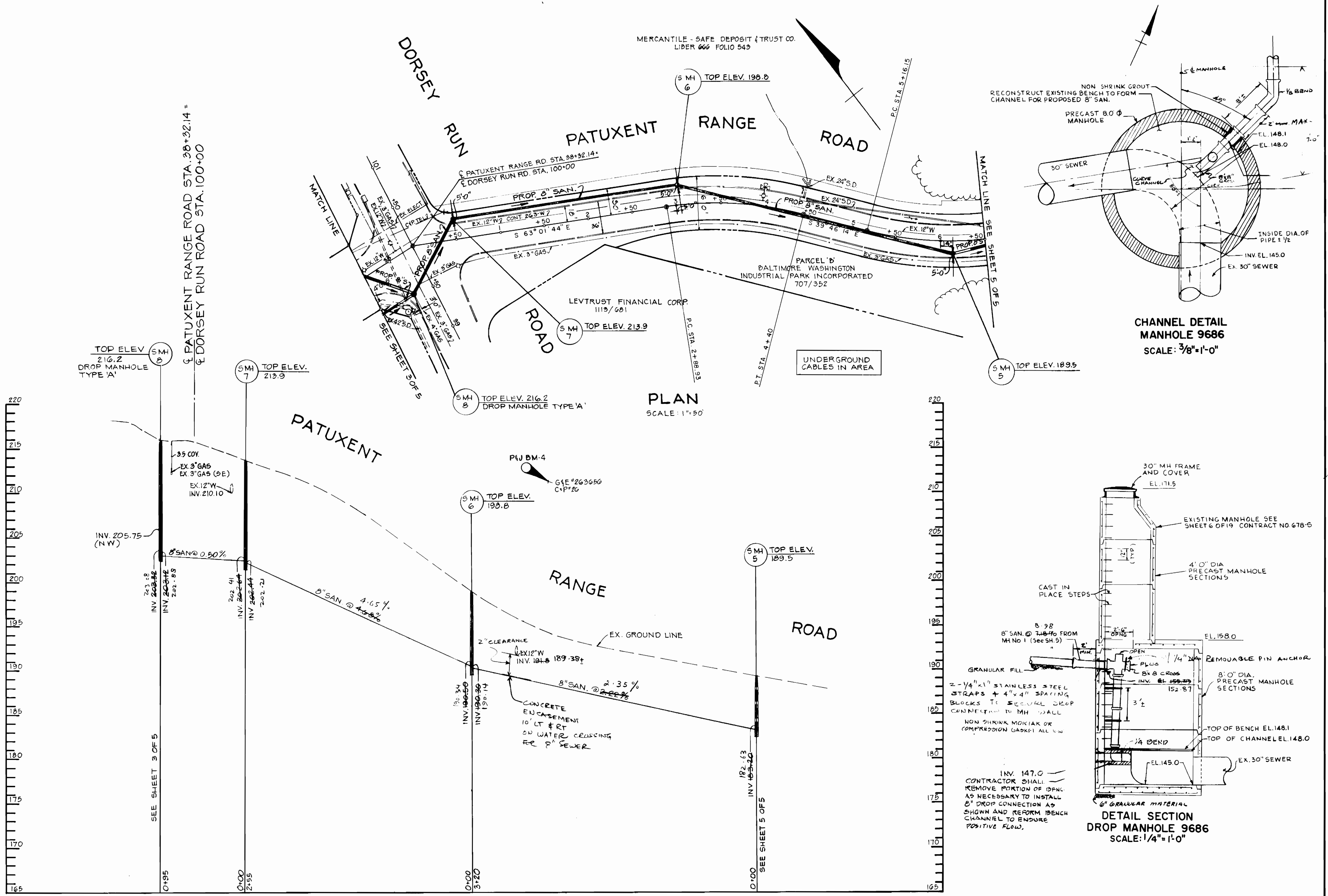
600' SCALE MAP NO. 220-43, 220-44 BLOCK NO.

BALTIMORE WASHINGTON INDUSTRIAL PARK
PARCELS 'D' & 'E' - BLOCK 'D'
AND
PARCELS 'G', 'H' & 'I' - BLOCK 'E'

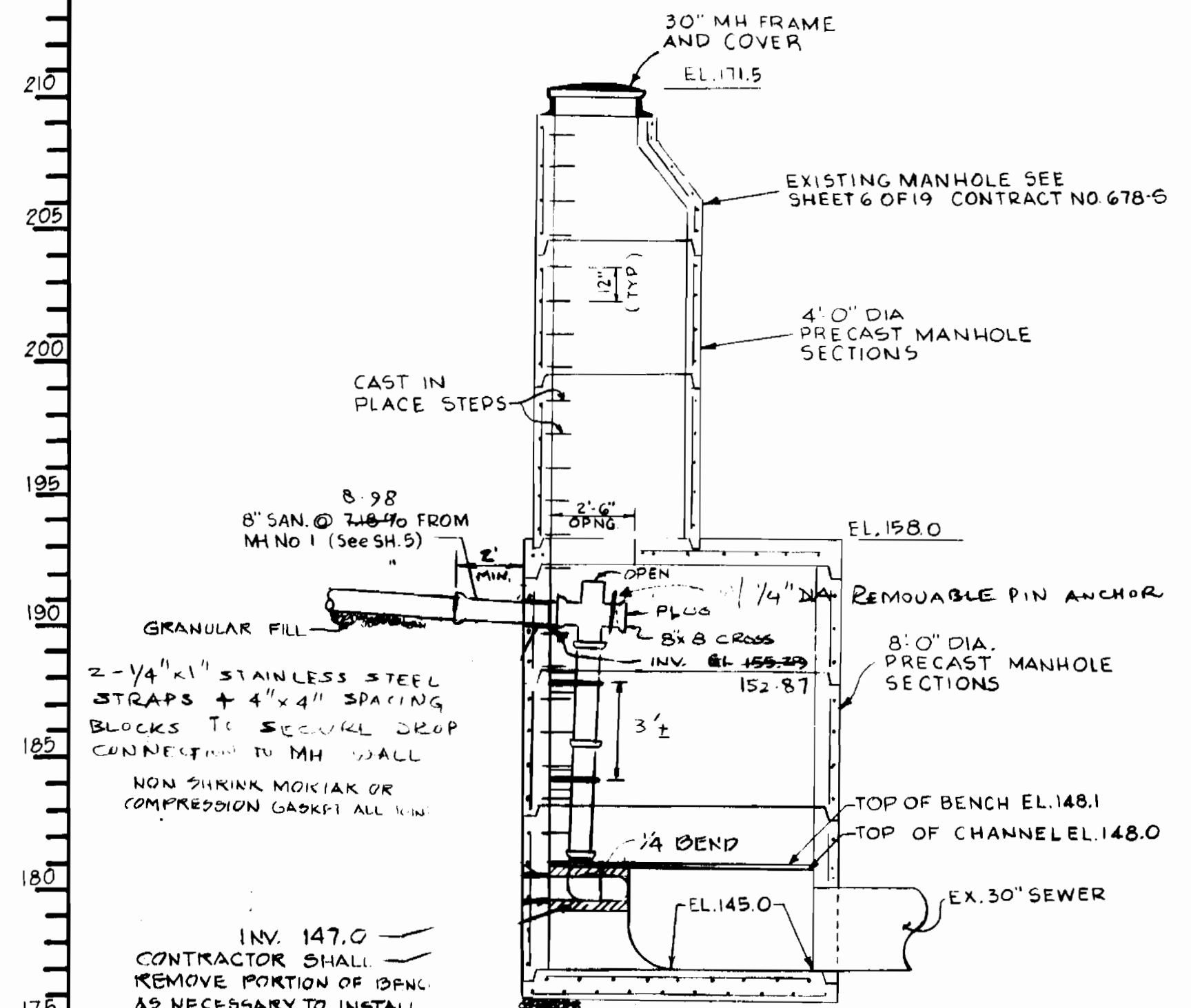
6th. ELECTION DISTRICT HOWARD COUNTY, MARYLAND

CONTRACT NO. 24-1380-D

SCALE AS SHOWN SHEET 3 OF 5



**CHANNEL DETAIL
MANHOLE 9686**
SCALE: 3/8"=1'-0"

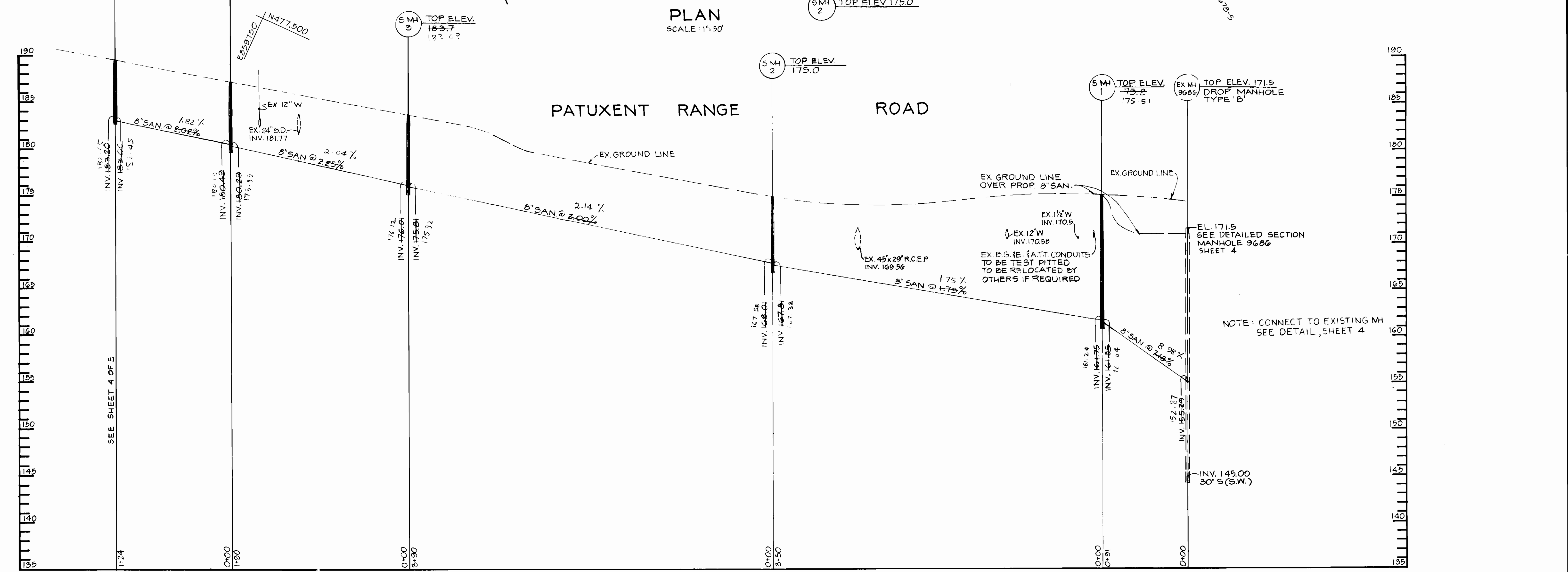
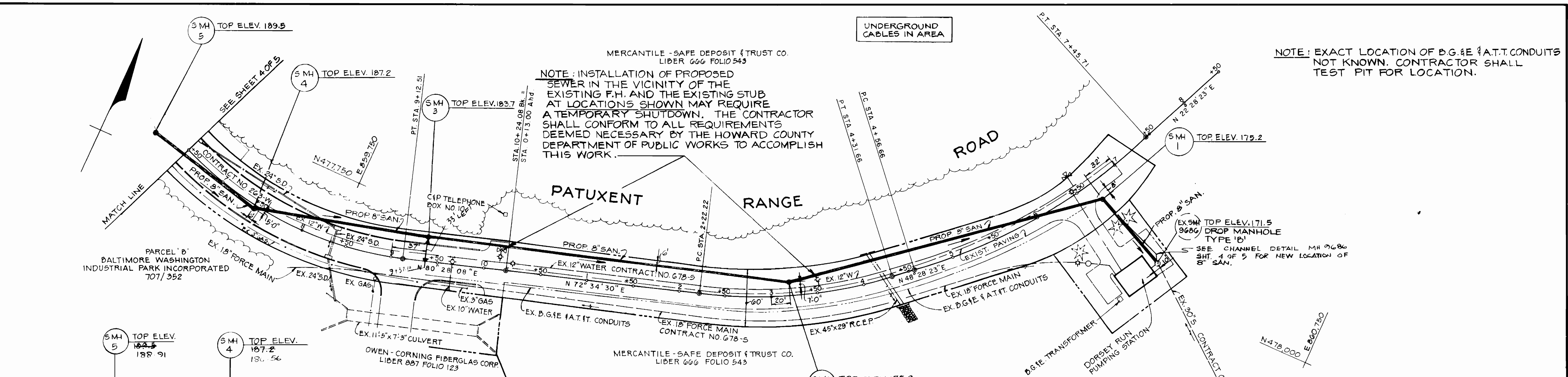


**DETAIL SECTION
DROP MANHOLE 9686**
SCALE: 1/4"=1'-0"

PROFILE
SCALE: HOR. 1"=50'
VERT. 1"=5'

DEPARTMENT OF PUBLIC WORKS HOWARD COUNTY, MARYLAND Director of Public Works: <i>Robert Newman</i> 12-6-88 Chief Bureau of Utilities: <i>Robert Newman</i> 12-6-88		CENTURY ENGINEERING, INC. CONSULTING ENGINEERS PLANNERS 32 WEST ROAD TOWSON, MARYLAND 21204 301-823-8070 Chief Land Development Division: <i>Michael J. ...</i>				DES: J.A.G. DRN: P.D.C. & J.A.G. CHK: G.K. DATE: 4/18/85		<table border="1"> <tr><td>JP</td><td>5</td><td>REVISED DROP MH 9686</td><td>1/23/86</td></tr> <tr><td>GPZ</td><td>4</td><td>REVISE DROP MANHOLE 9686</td><td>12/10/85</td></tr> <tr><td>J.H.C.</td><td>3</td><td>ADDED DETAILS FOR DROP MH 9686</td><td>10/18/85</td></tr> <tr><td>J.A.G.</td><td>2</td><td>CHANGED LOCATION OF SMH B</td><td>6/25/85</td></tr> <tr><td>J.A.G.</td><td>1</td><td>CHANGED SHEET NO.</td><td>5/24/85</td></tr> </table>		JP	5	REVISED DROP MH 9686	1/23/86	GPZ	4	REVISE DROP MANHOLE 9686	12/10/85	J.H.C.	3	ADDED DETAILS FOR DROP MH 9686	10/18/85	J.A.G.	2	CHANGED LOCATION OF SMH B	6/25/85	J.A.G.	1	CHANGED SHEET NO.	5/24/85	8" SANITARY SEWER PATUXENT RANGE ROAD PLAN AND PROFILE STA. 1+00 TO STA. 6+50		BALTIMORE WASHINGTON INDUSTRIAL PARK PARCELS 'D' & 'E' - BLOCK 'D' AND PARCELS 'G', 'H' & 'I' - BLOCK 'E' 6th. ELECTION DISTRICT HOWARD COUNTY, MARYLAND CONTRACT NO. 24-1380-D		SCALE AS SHOWN SHEET 4 OF 5
JP	5	REVISED DROP MH 9686	1/23/86																															
GPZ	4	REVISE DROP MANHOLE 9686	12/10/85																															
J.H.C.	3	ADDED DETAILS FOR DROP MH 9686	10/18/85																															
J.A.G.	2	CHANGED LOCATION OF SMH B	6/25/85																															
J.A.G.	1	CHANGED SHEET NO.	5/24/85																															

AS-BUILT
JUNE 19, 1986



DEPARTMENT OF PUBLIC WORKS HOWARD COUNTY, MARYLAND Director of Public Works: <i>Robert B. ...</i> DATE: 12-8-81 Chief Bureau of Engineering: <i>...</i> DATE: ... Chief Bureau of Utilities: <i>...</i> DATE: 12-8-81 Chief Land Development Division: <i>...</i> DATE: ...		CENTURY ENGINEERING, INC. CONSULTING ENGINEERS PLANNERS 32 WEST ROAD TOWSON, MARYLAND 21204 301-823-8070 Gregory R. Klar DATE: 4/18/85		DES: J.A.G. JF 5 REVISED SAN CONN. MH 9686 1/23/85 DRN: P.D.C. JF 4 HEALTH DEPT COMMENTS 12/3/85 J.A.G. 3 CHANGED LOCATION OF PROP. 8" SAN. FROM M.H. 4 TO EX. M.H. 9686 6-20-85 CHK: G.K. JAG 2 CHANGED SHEET NO. 5-28-85 J.A.G. 1 MOVED LOCATION OF PROP. 8" SAN FROM MH 3 TO MH 2 INTO PATUXENT RANGE ROAD 5-14-85 DATE: 4/18/85 BY NO. REVISION DATE		8" SANITARY SEWER PATUXENT RANGE ROAD PLAN AND PROFILE STA. 6+50 TO DORSEY RUN PUMPING STATION 600' SCALE MAP NO. 220-43-220-44 BLOCK NO. ...		BALTIMORE WASHINGTON INDUSTRIAL PARK PARCELS 'D' & 'E' - BLOCK 'D' AND PARCELS 'G', 'H' & 'I' - BLOCK 'E' 6th. ELECTION DISTRICT HOWARD COUNTY, MARYLAND CONTRACT NO. 24-1380-D SCALE AS SHOWN SHEET 5 OF 5	
---	--	--	--	---	--	--	--	---	--