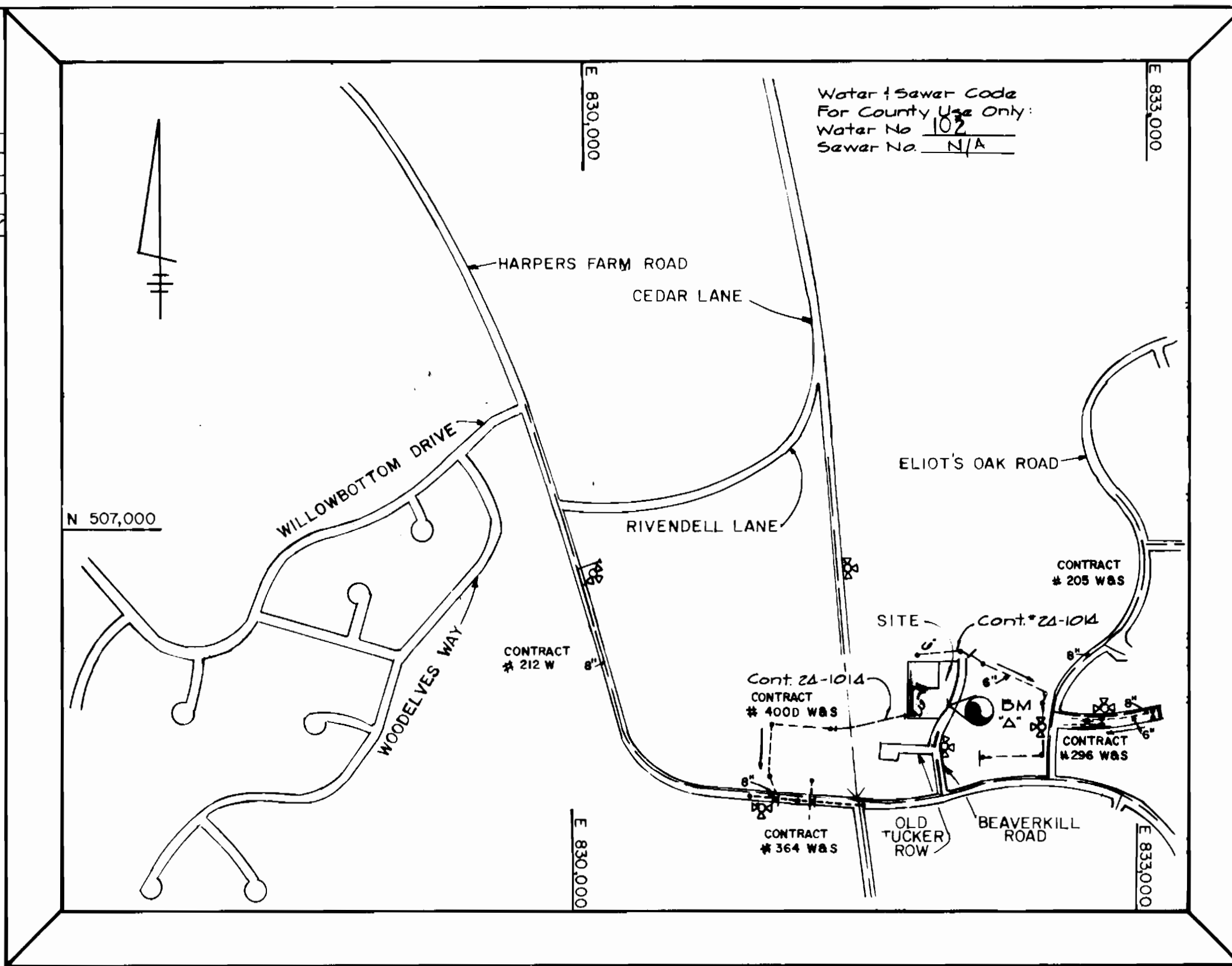
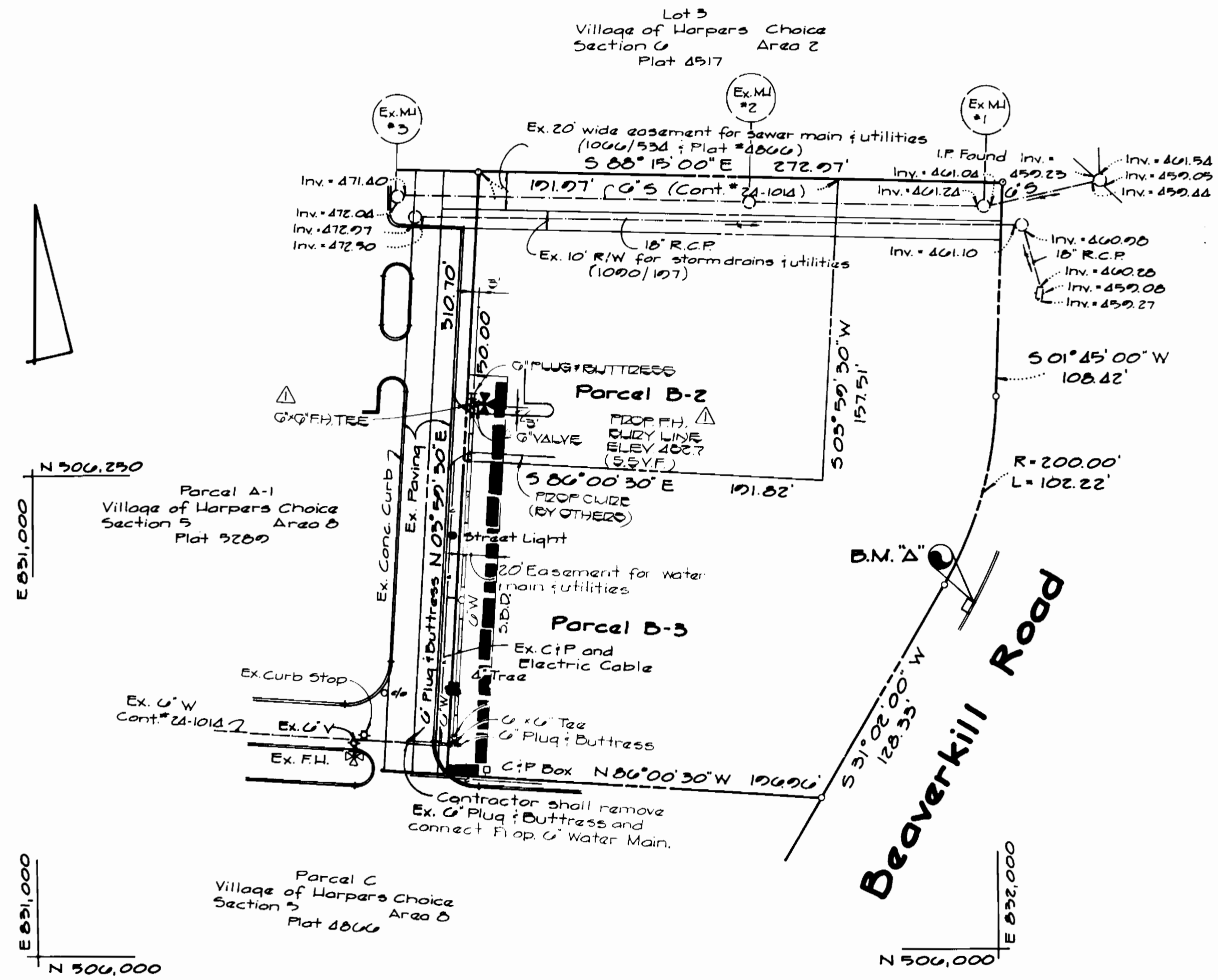


Benchmark
 B.M. "A" Elev. = 409.89
 "X" Cut Top of Curb @ Inlet on west side of Beaverkill Road.

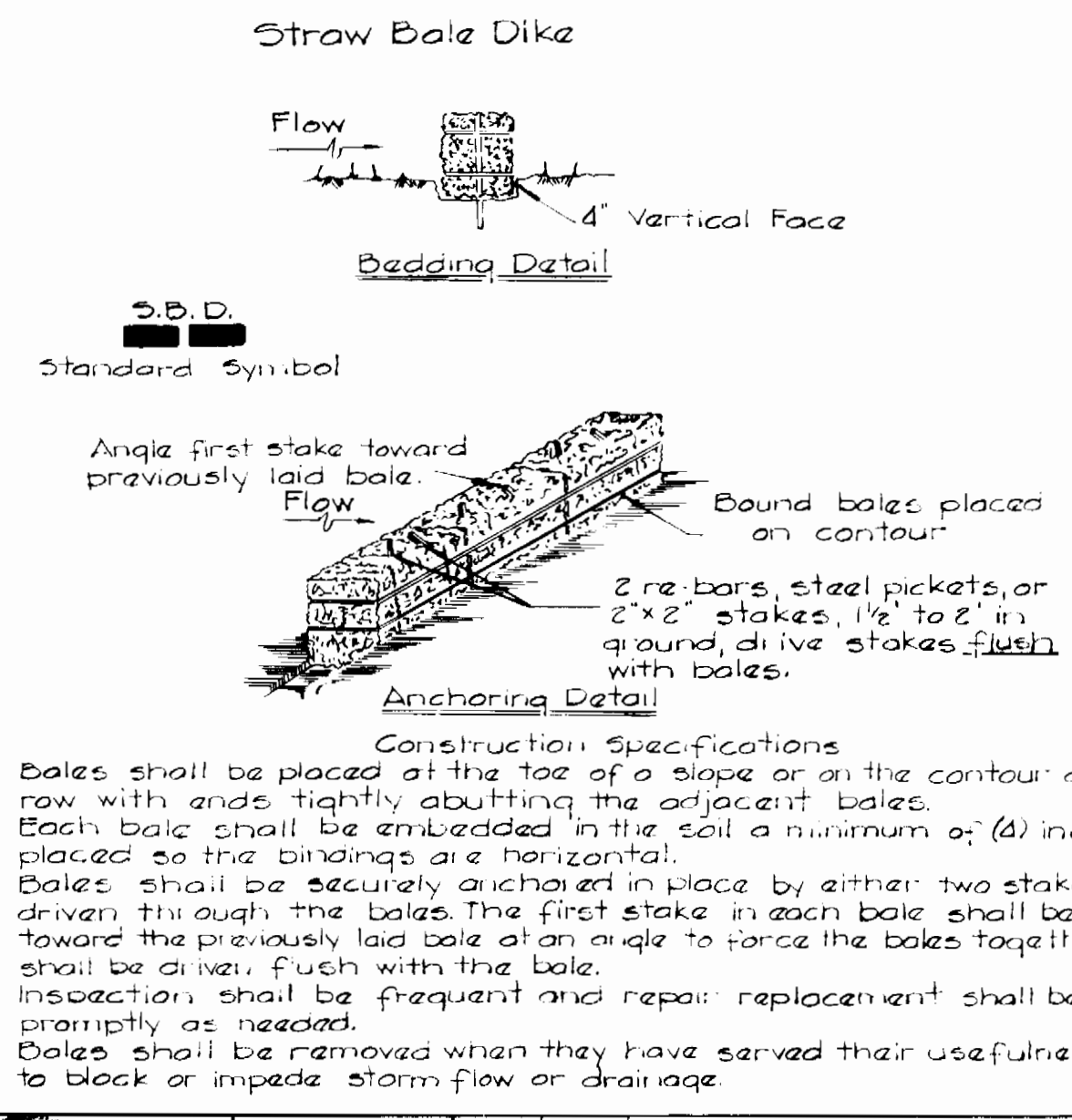
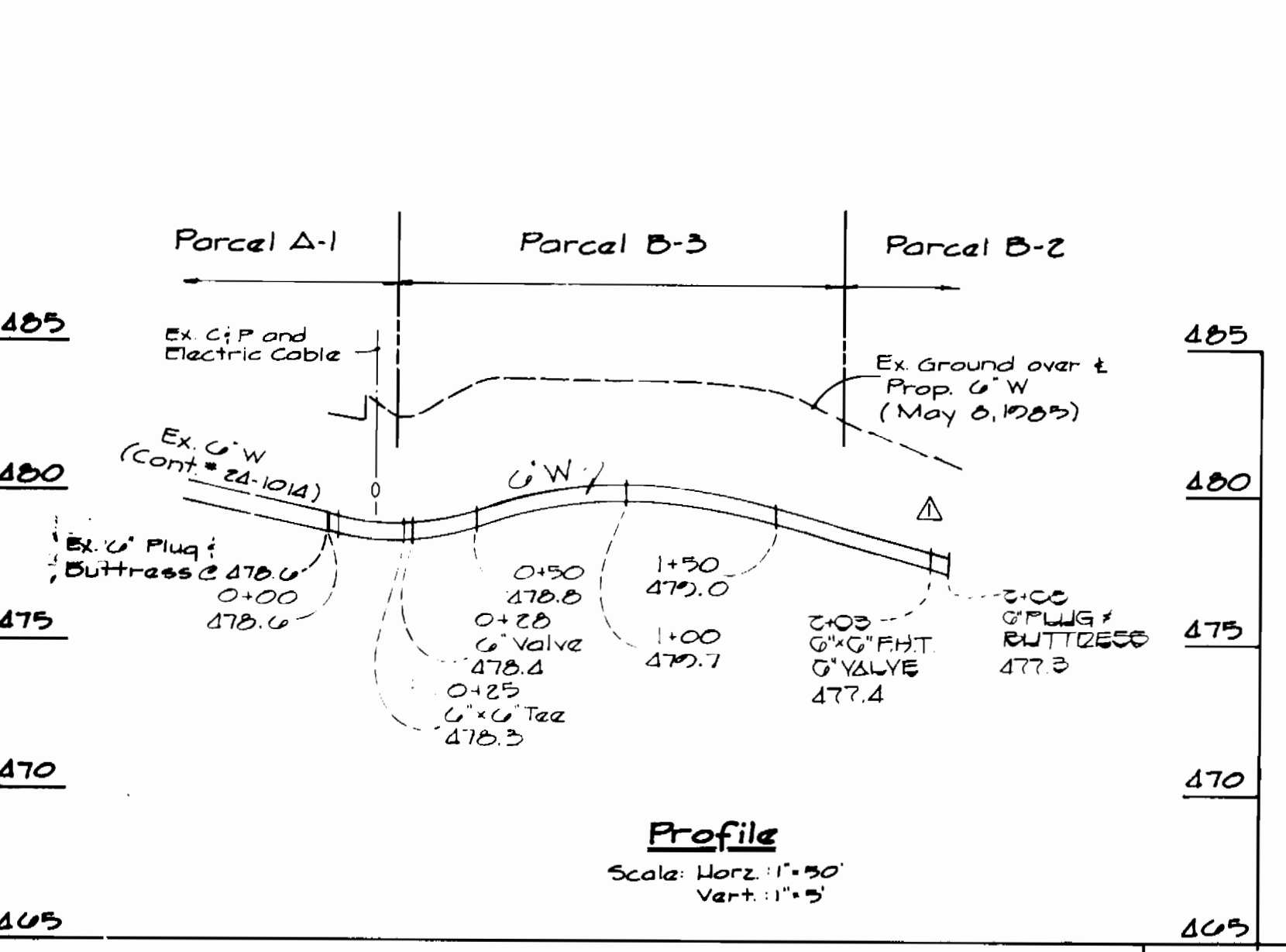
Item	Estimated	As-Built	Supplier
6" Water	200 LF	215 LF	GRIFFIN PIPE
6" Valve (excl. FH)	1 Ea	1 Ea	U.S. PIPE FOUNDRY
PIPE HYDRANT	1 Ea	1 Ea	U.S. PIPE FOUNDRY



TYPE OF BUILDINGS Retired Day Care Center
 NUMBER OF LOTS 1
 NO. OF WATER HOUSE CONNECTIONS 1
 NO. OF SEWER HOUSE CONNECTIONS 0
 DRAINAGE AREA Little Patuxent

GENERAL NOTES

- APPROXIMATE LOCATION OF EXISTING MAINS ARE SHOWN. THE CONTRACTOR SHALL TAKE ALL NECESSARY PRECAUTIONS TO PROTECT EXISTING MAINS AND SERVICES AND MAINTAIN UNINTERRUPTED SUPPLY. ANY DAMAGE INCURRED SHALL BE REPAIRED IMMEDIATELY TO THE SATISFACTION OF THE ENGINEER AT THE CONTRACTOR'S EXPENSE.
- ALL HORIZONTAL CONTROLS ARE BASED ON MARYLAND STATE COORDINATES.
- ALL VERTICAL CONTROLS ARE BASED ON U.S.G.S. DATUM.
- ALL PIPE ELEVATIONS SHOWN ARE INVERT ELEVATIONS.
- CLEAR ALL UTILITIES BY A MINIMUM OF 6'. CLEAR ALL POLES BY 2'-0" MINIMUM OR TUNNEL AS REQUIRED. THE OWNER HAS CONTACTED THE UTILITIES COMPANIES AND HAS MADE ARRANGEMENTS FOR BRACING OF POLES AS SHOWN ON THE DRAWINGS. IN THE EVENT THE CONTRACTOR'S WORK REQUIRES THE BRACING OF ADDITIONAL POLES, ANY COST INCURRED BY THE OWNER FOR THE BRACING OF ADDITIONAL POLES OR DAMAGES SHALL BE DEDUCTED FROM MONEY OWED THE CONTRACTOR. THE CONTRACTOR SHALL COORDINATE WITH THE UTILITY COMPANIES TO SCHEDULE THE BRACING OF THE POLES.
- CONTRACTOR SHALL NOTIFY THE FOLLOWING UTILITIES OR AGENCIES AT LEAST FIVE (5) WORKING DAYS BEFORE STARTING WORK SHOWN ON THESE PLANS:
 BALTIMORE GAS & ELECTRIC COMPANY - CONTRACTOR SERVICES: 561-2585
 BALTIMORE GAS & ELECTRIC COMPANY - UNDER GROUND DAMAGE CONTROL: 234-5621
 BALTIMORE GAS & ELECTRIC COMPANY - TROUBLE SHOOTING: 298-9013
 MISS UTILITY: 1-559-0100
 CHESAPEAKE & POTOMAC TELEPHONE COMPANY: 725-9976
 BUREAU OF UTILITIES - HOWARD COUNTY: 992-2365
- TREES ARE TO BE PROTECTED FROM DAMAGE TO MAXIMUM EXTENT. TREES LOCATED WITHIN THE CONSTRUCTION STRIP ARE NOT TO BE REMOVED OR DAMAGED BY THE CONTRACTOR.
- CONTRACTOR SHALL REMOVE TREES, STUMPS AND ROOTS ALONG LINE OF EXCAVATION AS DIRECTED BY THE ENGINEER. PAYMENT FOR SUCH REMOVAL SHALL BE INCLUDED IN THE UNIT PRICE BID FOR CONSTRUCTION OF THE MAIN.
- PLACE REGULATION "MEN WORKING" AND WARNING SIGNS AS REQUIRED TO COMPLY WITH MARYLAND STATE HIGHWAY ADMINISTRATION MANUAL OF TRAFFIC CONTROL FOR HIGHWAY CONSTRUCTION AND MAINTENANCE OPERATIONS.
- ALL WATER MAINS TO BE D.I.P. UNLESS OTHERWISE NOTED.
- TOPS OF ALL WATER MAINS TO HAVE A MINIMUM OF 3-1/2" COVER UNLESS OTHERWISE NOTED.
- ALL WATER HOUSE CONNECTIONS SHALL BE FOR INSIDE METER SETTINGS UNLESS OTHERWISE SHOWN.
- VALVES ADJACENT TO TEES SHALL BE STRAPPED TO TEES.
- ALL FITTINGS SHALL BE BUTTRESSED OR ANCHORED WITH CONCRETE IN ACCORDANCE WITH THE STANDARD DETAILS UNLESS OTHERWISE PROVIDED FOR ON THE DRAWINGS.
- FIRE HYDRANTS SHALL BE SET TO THE BURY LINE ELEVATION SHOWN ON THE DRAWINGS. ALL FIRE HYDRANTS SHALL BE STRAPPED AND BUTTRESSED WITH CONCRETE IN ACCORDANCE WITH STANDARD DETAILS. SOIL AROUND THE FIRE HYDRANT SHALL BE COMPACTED IN ACCORDANCE WITH SECTION 1003 & 1008 OF THE STANDARD SPECIFICATIONS.
- THE CONTRACTOR SHALL NOT OPERATE ANY WATER MAIN VALVES ON THE EXISTING WATER SYSTEM.
- FOR ALL COPPER WATER HOUSE CONNECTIONS, UTILIZE FLARED TYPE FITTINGS ONLY.
- FOR DETAILS NOT SHOWN ON THE DRAWINGS, AND FOR MATERIALS AND CONSTRUCTION METHODS, USE HOWARD COUNTY DESIGN MANUAL, VOLUME IV, STANDARD SPECIFICATIONS AND DETAILS FOR CONSTRUCTION. THE CONTRACTOR SHALL HAVE A COPY OF VOLUME IV ON THE JOB.
- WHERE TEST PITS HAVE BEEN MADE ON EXISTING UTILITIES, THEY ARE NOTED BY THE SYMBOL [] AT THE LOCATION OF THE TEST PIT. A NOTE OR NOTES CONTAINING THE RESULTS OF THE TEST PIT OR PITS IS INCLUDED ON THE DRAWINGS. EXISTING UTILITIES IN THE VICINITY OF THE PROPOSED WORK FOR WHICH TEST PITS HAVE NOT BEEN DUG SHALL BE LOCATED BY THE CONTRACTOR TWO WEEKS IN ADVANCE OF CONSTRUCTION OPERATIONS AT HIS OWN EXPENSE.



Sediment Control measures for this contract will be implemented in accordance with Article 15 of the Howard County Design Manual and Standards and Specifications for Soil Erosion and Sediment Control in Developing areas.

Review for Howard Soil Conservation District and meets Technical Requirements
 [Signature] 7-12-85
 U.S. Soil Conservation District Date

This Development Plan is approved for erosion and sediment control by Howard Soil Conservation District.
 Approved:
 [Signature] 7/12/85
 Howard Soil Conservation District Date

CONTRACT NO. 44-1377-D
 WATER MAIN EXTENSION
 VILLAGE OF HARPERS CHOICE
 SECTION 5 - AREA B
 WATER AND SEWER EXTENSION
 HOWARD COUNTY, MARYLAND

DEPARTMENT OF PUBLIC WORKS
 HOWARD COUNTY, MARYLAND
 [Signature] 7-15-85
 CHIEF, BUREAU OF UTILITIES DATE

[Signature] 7/12/85
 CHIEF, BUREAU OF ENGINEERING DATE

[Signature]
 CHIEF, LAND DEVELOPMENT DIVISION DATE

FISHER, COLLINS AND CARTER, INC.
 CIVIL ENGINEERS AND LAND SURVEYORS
 8388 COURT AVENUE
 ELLICOTT CITY, MARYLAND 21043
 461-2855

[Signature]
 DATE

DES: D.E.V.	
DRN: D.E.V.	
CHK: T.A.F.	
DATE: 5/14/85	
BY: [Signature]	
NO: [Signature]	

PLAN AND PROFILE
WATER MAINS

DATE: 6/00 SCALE MAP NO: 20 BLOCK NO:

SCALE AS SHOWN
 SHEET 1 OF 1