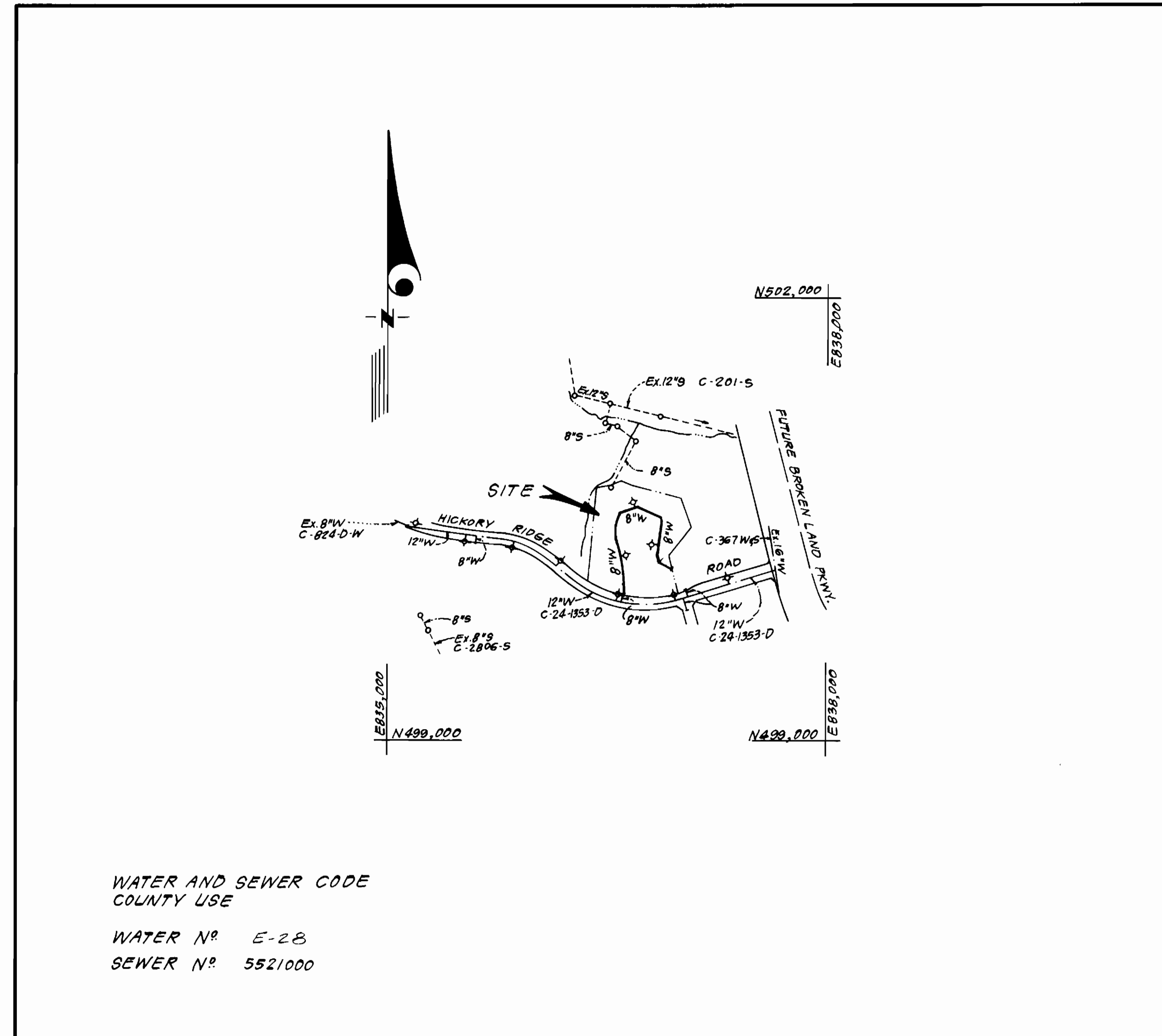


TYPE OF BUILDING	Apartments
NUMBER OF UNITS	174
NUMBER OF WHC'S	8
NUMBER OF SHC'S	0
DRAINAGE AREA	Little Potuxent



WATER AND SEWER CODE
COUNTY USE

WATER N^o E-28
SEWER N^o 5521000

VICINITY MAP
SCALE: 1" = 600'

GENERAL NOTES

- Approximate location of existing mains are shown. The contractor shall take all necessary precautions to protect existing mains and services and maintain uninterrupted supply. Any damage incurred shall be repaired immediately to the satisfaction of the Inspector, at the contractor's expense.
- All horizontal controls are based on Maryland State Coordinates.
- All vertical controls are based on U.S.G.S. Datum.
- All pipe elevations shown are invert elevations.
- Clear all utilities by a minimum of 6" clear all poles by 2'-0" minimum or tunnel as required. Any cost incurred to the contractor for tunneling or bracing at poles shall be included in unit prices bid for excavation and backfill.
- For details not shown on the drawings use Howard County Standard Details.
- For materials and construction methods use Howard County Standard Specifications & Ho. Co. Design Manual Volume II. The contractor shall have a copy of Volume II on the job.
- Contractor shall locate existing utilities a minimum of two (2) weeks in advance of construction operations in the vicinity of proposed utilities at his own expense.
- Contractor shall notify the following utilities or agencies at least five (5) working days before starting work shown on these plans.
 State Highway Administration - 531-5533
 Baltimore Gas & Electric Company - Contractor Services 561-2585
 Baltimore Gas & Electric Company - Underground Damage Control - 234-5621
 Baltimore Gas & Electric Company - Trouble Shooting - 298-9013
 "Miss Utility" - 1-559-0100
 Chesapeake & Potomac (C & P) Telephone Company - 725-9976
 Colonial Pipeline Company - 795-1390
 Bureau of Utilities Howard County - 992-2366
- Trees are to be protected from damage to maximum extent. Trees located within the construction strip are not to be removed or damaged by the contractor.
- Contractor shall remove trees, stumps, and roots along line of excavation as directed by the Inspector. Payment for such removal shall be included in the unit price bid for excavation and backfill.
- Place regulation "Men Working" and warning signs as required to comply with Maryland State Highway Administration Manual of Traffic Control for Highway Construction and Maintenance Operations.
- All water mains to be D.I.P. unless otherwise noted.
- Top of all water mains to have a minimum of 3'-1/2' cover unless otherwise noted.
- Valves adjacent to tees shall be strapped to tees.
- Block all fittings with concrete.
- Bury line elevations on fire hydrants shall be set to the elevations shown on the drawings. All fire hydrants shall be strapped and buttressed with concrete in accordance with standard details. Soil around the fire hydrant to be compacted in accordance with Sections 1003 & 1008 of the Standard Specifications.
- All water house connections shall be for an outside meter setting. Vault locations are shown thus: □
- The contractor shall not operate any water main valves on the existing system.
- All sewer mains shall be C.S.P.P., V.G.P.P., P.V.C. or A.G.P. Class 2400 unless otherwise noted.
- The contractor shall provide a joint in all sewer mains within 2'-0" of exterior manhole well.
- All manholes shall be 4'-0" inside diameter, unless otherwise noted.
- Water main and water house connection lines must have a minimum of one foot separation from the sanitary sewer and sewer house connections as they cross. Except at crossings, water and sewer lines shall have a minimum horizontal separation of 10'.
- For all Copper Water House Connections, utilize flared type fittings only.
- All sewer and sewer house connections shown are private. Water house connections between the vaults and buildings are private.

Sediment Control Measures will be implemented in accordance with Article No. 15 of the Specifications & with Site Development Plan SDPB-231; Drawings 344, Sediment & Erosion Control.

REVIEWED FOR HOWARD SOIL CONSERVATION DISTRICT AND MEETS TECHNICAL REQUIREMENT.

John M. [Signature] 8-19-85
SIGNATURE DATE

US SOIL CONSERVATION SERVICE

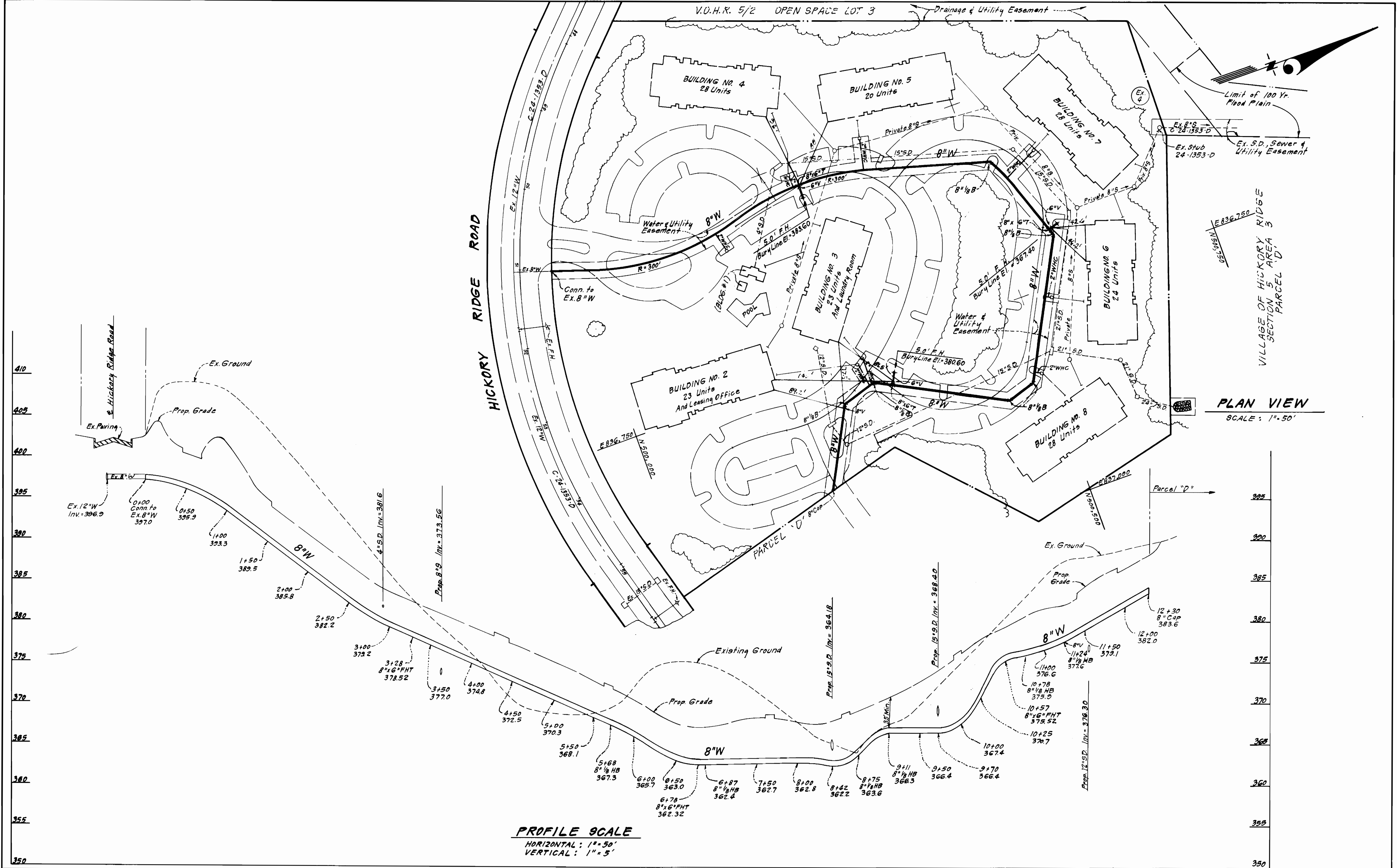
This Development Plan is approved for Soil Erosion and Sediment Control by the Howard Soil Conservation District.

APPROVED:
Stephen L. [Signature] 8/19/85
Howard S.C.D. DATE

CONTRACT NO. 44-1375-D
VILLAGE OF HICKORY RIDGE
SECTION 5 AREA 2, PARCEL "C"
HOWARD COUNTY, MARYLAND
DEPARTMENT OF PUBLIC WORKS

QUANTITIES			
ITEM	ESTIM'D	AS-BUILT	MATERIAL/SUPPLIER
8" W	1230 LF	1230 LF	A&P WATER & SEWER SUPPLIES INC.
F.H.	3 EA.	3 EA.	"
2" WHC	224 LF	233 LF	"
2" Meter Vault	8 EA.	8 EA.	"
8" V	1 EA.	1 EA.	"

DEPARTMENT OF PUBLIC WORKS HOWARD COUNTY, MARYLAND <i>John F. [Signature]</i> 8-22-85 DIRECTOR OF PUBLIC WORKS DATE <i>Robert W. [Signature]</i> 8/19/85 CHIEF, BUREAU OF UTILITIES DATE	CLARK-FINEFROCK & SACKETT ENGINEERS-PLANNERS-SURVEYORS 11315 LOCKWOOD DRIVE SILVER SPRING, MARYLAND 20904 (301) 593-3400	DES: C.K.G. DRN: V.L.B. CHK: C.K.G. DATE: 6/85	TITLE SHEET	COLUMBIA, VILLAGE OF HICKORY RIDGE PARCEL C, SECTION 5 AREA 2 5 TH ELECTION DISTRICT CONTRACT NO. 44-1375-D	SCALE AS SHOWN
					SHEET 1 OF 2



DEPARTMENT OF PUBLIC WORKS
HOWARD COUNTY, MARYLAND

Shirley N. Nunn 8-22-9
DIRECTOR OF PUBLIC WORKS DATE

Robert Ward 8/14/95
CHIEF, BUREAU OF UTILITIES DATE

William B. Ray 8-22-95
CHIEF, BUREAU OF ENGINEERING DATE

Michael H. S. H. 8-22-95
CHIEF, LAND DEVELOPMENT DIV. DATE

CFE CLARK, FINEFROCK & SACKETT
ENGINEERS - PLANNERS - SURVEYORS

11315 LOCKWOOD DRIVE SILVER SPRING, MARYLAND 20904
(301) 593-3400



DES: C.K.G.	V.L.M.	1	Rev vertical alignment for 8" W bet 9+50 & 10+57	12-11-89
DRN: V.L.B.				
CHK: C.K.G.				
DATE: 6-85	BY	NO.	REVISION	DATE

PLAN & PROFILES OF
WATER MAIN

600' SCALE MAP NO. 36 BLOCK NO.

COLUMBIA, VILLAGE OF HICKORY RIDGE
PARCEL C, SECTION 5 AREA 2
5TH ELECTION DISTRICT
CONTRACT NO. 44-1375-D

SCALE
AS SHOWN

SHEET
2 OF 2