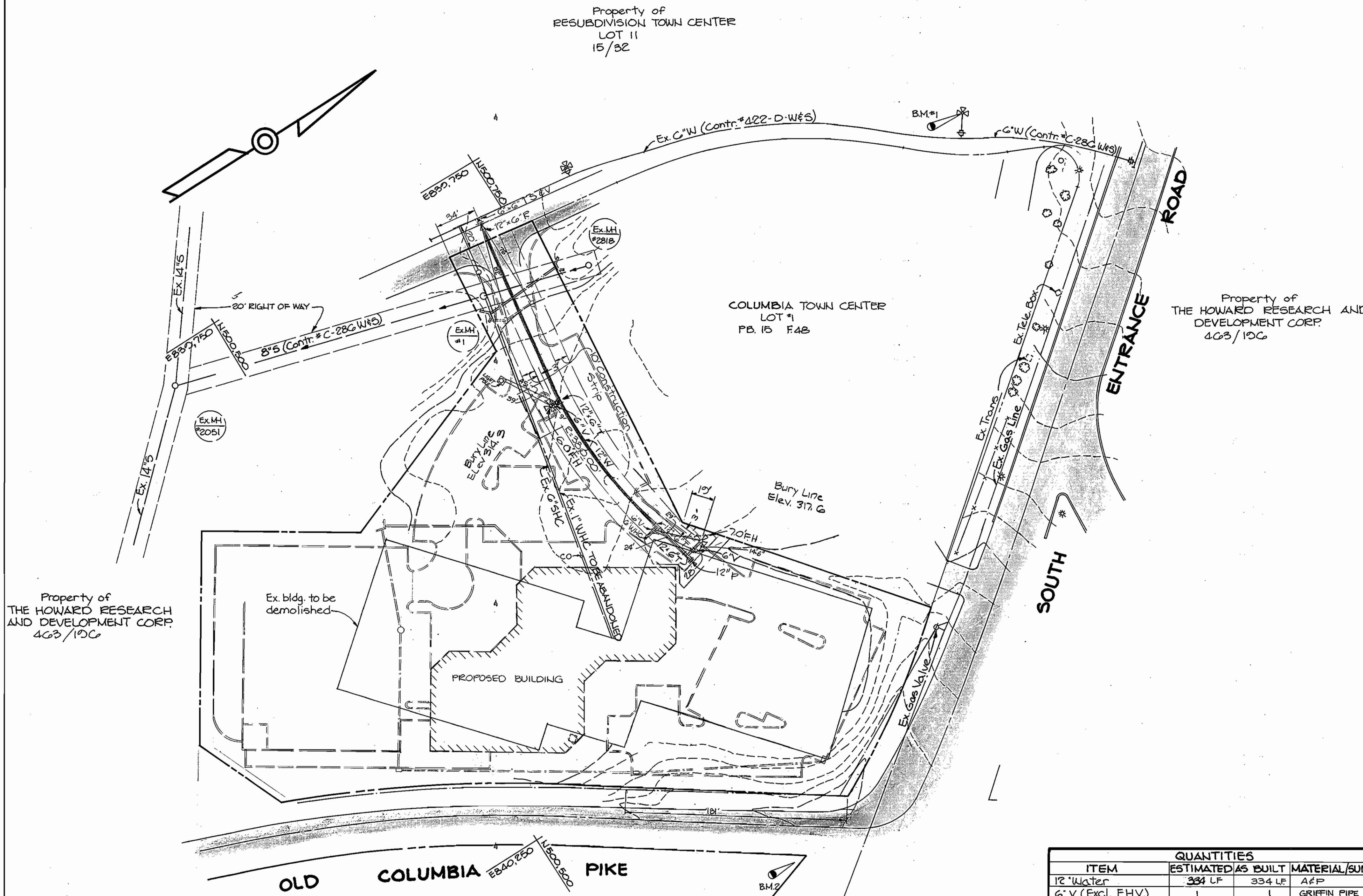
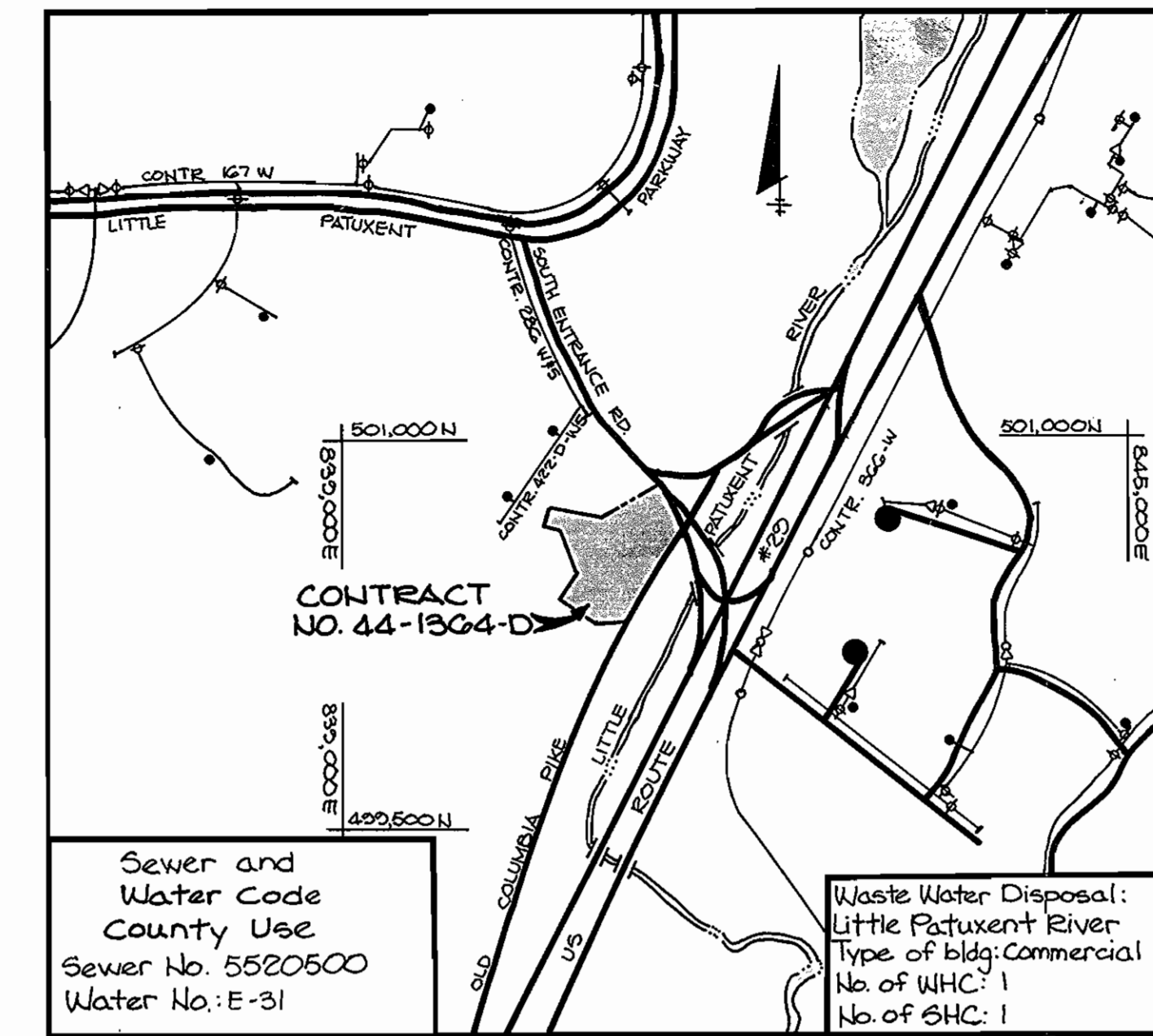


**Bench Marks**

B.M. #1 Elev. 322.60  
Top nut on fire hydrant on east side of Private Drive and south of parking lot entrance

B.M. #2 Elev. 299.66  
P.K. Nail at the corner of Old Columbia Pike and South Entrance Road



1. Approximate location of existing mains are shown. The contractor shall take all necessary precautions to protect existing mains and services and maintain uninterrupted supply. Any damage incurred shall be repaired immediately to the satisfaction of the Engineer at the Contractor's expense.
2. All horizontal controls are based on Maryland State Coordinates.
3. All vertical controls are based on U.S.G.S. data.
4. All pipe elevations shown are invert elevations.
5. Clear all utilities by a minimum of 6'. Clear all poles by 2'-0" minimum or tunnel as required. The owner has contacted the utility companies and has made arrangements for bracing of poles as shown on the drawings. In the event the contractor's work requires the bracing of additional poles, any cost incurred by the owner for the bracing of additional poles or damages shall be deducted from money owed the contractor. The contractor shall coordinate with the utility companies to schedule the bracing of the poles.
6. For details not shown on the drawings, and for materials and construction methods, use Howard County Design Manual, Volume IV, Standard Specifications and Details for Construction. The contractor shall have a copy of Volume IV on the job.
7. Where test pits have been made on existing utilities, they are noted by the symbol  $\square$  at the location of the test pit. A note or notes containing the results of the test pit or pits is included on the drawings. Existing utilities in the vicinity of the proposed work for which test pits have not been dug shall be located by the contractor two weeks in advance of construction operations at his own expense.
8. Contractor shall notify the following utilities or agencies at least five working days before starting work shown on these plans:
 

State Highway Administration	531-5533
Baltimore Gas & Electric Co.-Contractor Services	561-2585
Baltimore Gas & Electric Co. Under Ground Damage Control	234-5621
Baltimore Gas & Electric Co. Trouble Shooting	208-2013
Miss Utility	1-555-0100
Colonial Pipeline Co.	705-1300
Bureau of Utilities, Howard County Department of Public Works	292-2366
9. Trees are to be protected from damage to maximum extent. Trees located within the construction strip are not to be removed or damaged by the contractor.
10. Contractor shall remove trees, stumps and roots along line of excavation as directed by the Engineer. Payment for such removal shall be included in the unit price bid for excavation and backfill.
11. Place regulation "Men Working" and warning signs as required to comply with Maryland State Highway Administration Manual of Traffic Control for Highway Construction and Maintenance Operations.
12. All water mains to be D.I.P. unless otherwise noted.
13. Top of all water mains to have a minimum of 3 1/2' cover unless otherwise noted.
14. Valves adjacent to tees shall be strapped to tees.
15. Block all fittings with concrete.
16. Bury line elevations on fire hydrants shall be set to the elevations shown on the drawings. All fire hydrants shall be strapped and buttressed with concrete in accordance with standard details. Soil around the fire hydrant to be compacted in accordance with Section 1003 & 1008 of the General Requirements for water and sewer of the Standard Specifications.
17. All water house connections shall be for an inside meter setting.
18. The contractor shall not operate any water main valves on the existing system.
19. For all copper water house connections utilize flared type fittings only.
20. Profile stations shall be adjusted as necessary to confirm to Plan dimensions.
21. No pipe shall be laid until lines of excavation have been brought to subgrade.

ITEM	QUANTITIES		MATERIAL/SUPPLIER
	ESTIMATED	AS BUILT	
12" Water	334 LF	334 LF	AFP
6" V (Excl. F.H.V.)	1	1	GRIFFIN PIPE PROD.
Fire Hydrants	2	2	" " "
6" Water	37 LF	37 LF	AFP
6" G.T.S.V.	1	1	GRIFFIN PIPE PROD.

Sediment control measures for this contract will be implemented in accordance with article 15 of the specifications and S.D.P. - 85-160 C

Howard Soil Conservation District  
Reviewed for Howard Soil Conservation District and meets technical requirements

*Stephen L. Rubin* 5/14/85  
U.S. Soil Conservation Service Date

This plan is approved for soil erosion and sediment control by the Howard Soil Conservation District.

*James M. Helton* 5-14-85  
Howard Soil Conservation District Date

DEPARTMENT OF PUBLIC WORKS  
HOWARD COUNTY, MARYLAND

*Walter N. Nunn* 5-14-85  
DIRECTOR OF PUBLIC WORKS DATE

*Michael J. Stasias*  
CHIEF, BUREAU OF ENGINEERING DATE

*Richard M. B...* 5-14-85  
CHIEF, BUREAU OF UTILITIES DATE

*Arthur E. Muegge III*  
CHIEF, LAND DEVELOPMENT DIVISION DATE

THE RIEMER GROUP, INC.  
3105 HEALTH PARK DRIVE  
ELLICOTT CITY, MARYLAND 21043

STATE OF MARYLAND  
ARTHUR E. MUEGGE III  
PROFESSIONAL ENGINEER

DES: JDP			
DRN: DAM			
CHK: BAC 2	Removed Part of 12" W Relocated EHS and Revised Quantities	0/9/85	
PRE: J	Add Sta. and Bury Line Elevations	5-20-85	
DATE: 4-30-85			
BY NO.	REVISION	DATE	

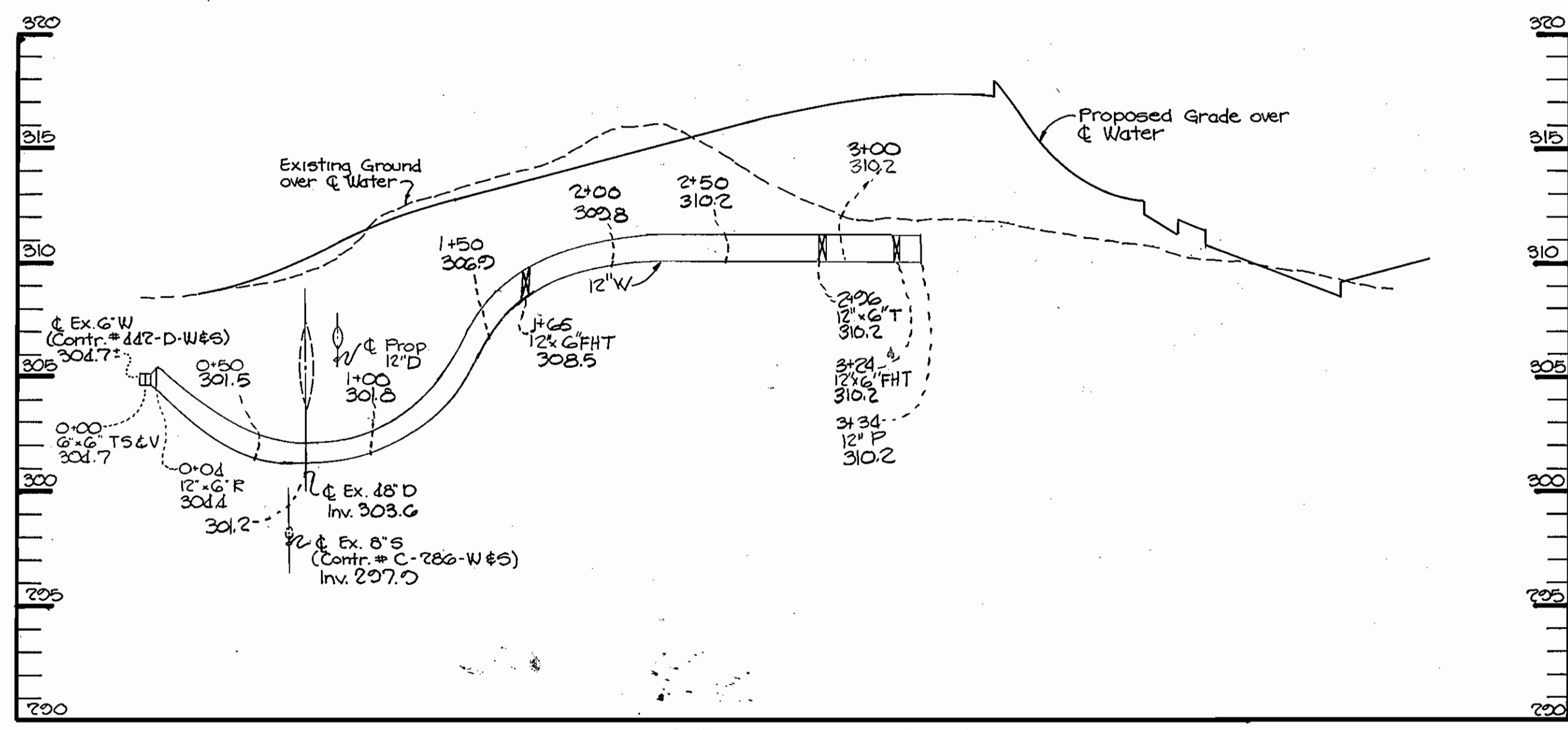
PLAN OF A  
WATER MAIN

600' SCALE MAP NO. 36 BLOCK NO.

TOWN CENTER SECTION 5, AREA 2, PARCELS A&B  
SECTION 5, AREA 3, PARCEL A  
SYMPHONY WOODS OFFICE CENTER  
5 TH ELECTION DISTRICT  
HOWARD COUNTY, MARYLAND  
CONTRACT NO. 44-1364-D

SCALE AS SHOWN

SHEET 1 OF 2



**PROFILE** SCALE: HORIZ. 1" = 50' VERT. 1" = 5'

DEPARTMENT OF PUBLIC WORKS  
 HOWARD COUNTY, MARYLAND

Director of Public Works: *Steve F. Nemy* DATE: 5-25-85  
 Chief, Bureau of Engineering: *[Signature]* DATE: 5-25-85  
 Chief, Bureau of Utilities: *[Signature]* DATE: 5-22-85  
 Chief, Land Development Division: *[Signature]* DATE: 5-22-85

THE RIEMER GROUP INC.  
 3105 HEALTH PARK DRIVE  
 ELLICOTT CITY, MARYLAND 21043



DES: JDP			
DRN: JCJ			
CHK:			
DATE: 4-30-85	BAC 1	REVISED WATER PROFILE	10/185
BY NO.		REVISION	DATE

PROFILE OF WATER MAIN

600' SCALE MAP NO. 36 BLOCK NO.

TOWN CENTER - SECTION 5, AREA 2, PARCELS A & B  
 SECTION 5, AREA 3, PARCEL A  
 SYMPHONY WOODS OFFICE CENTER  
 5<sup>TH</sup> ELECTION DISTRICT  
 HOWARD COUNTY, MARYLAND  
 CONTRACT NO. 44-1364-D

SCALE AS SHOWN  
 SHEET 2 OF 2