

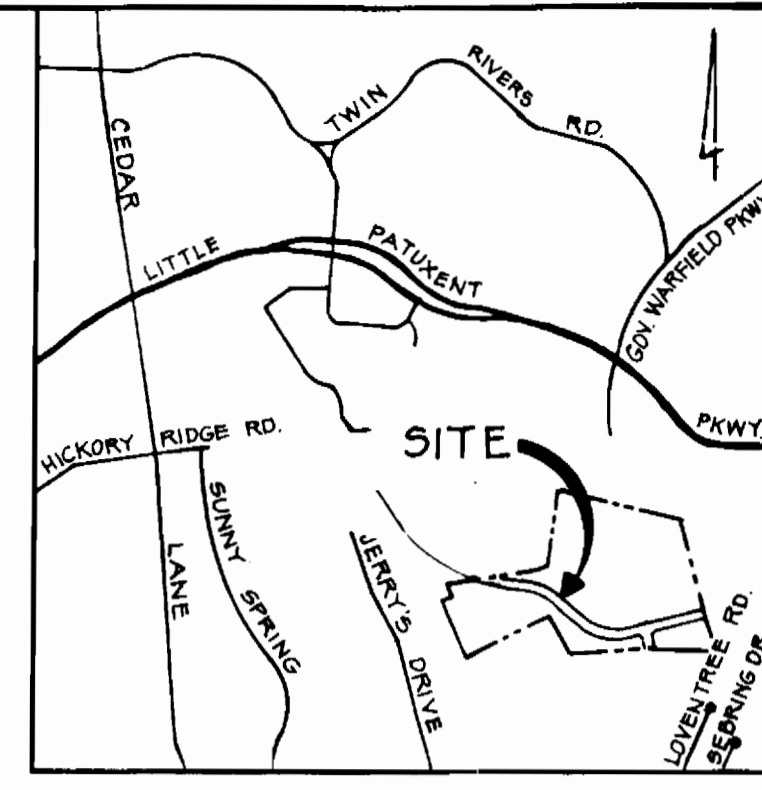
# VILLAGE OF HICKORY RIDGE

## SECTION 5 AREAS 1&2

### 5 TH. ELECTION DISTRICT

# HOWARD COUNTY, MARYLAND

## CONTRACT NO.24-1353-D



VICINITY MAP  
SCALE: 1"=2000'

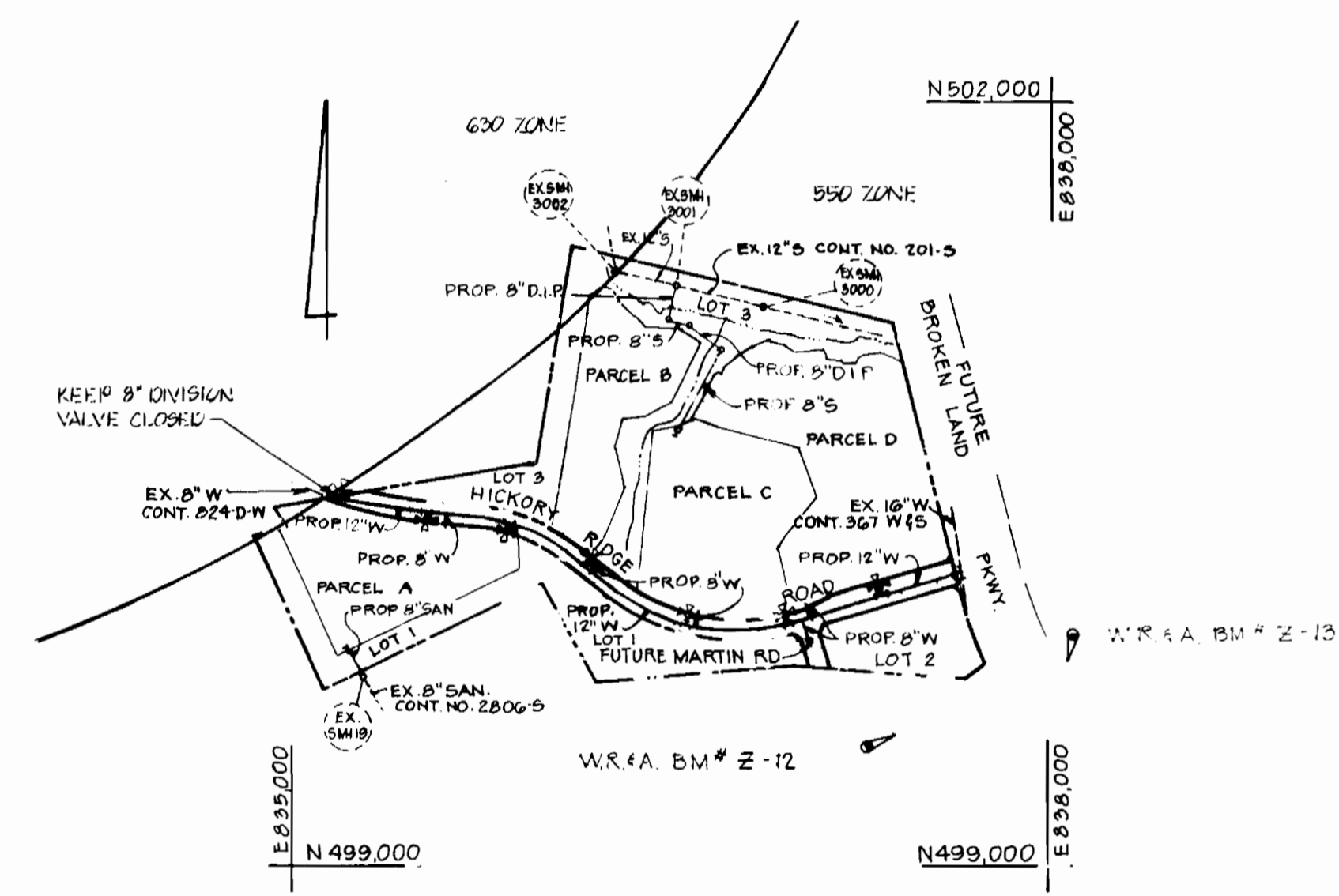
BENCH MARKS  
 WR.4A BM #Z-12 ELEV 350.65  
 R.R. SPIKE BASE 15' OAK #2  
 TOP STREAM BANK 20'  
 PAST P.I. #Z-021  
 WR.4A BM #Z-13 ELEV 340.93  
 R.R. SPIKE BASE 15' DEECH  
 10' LEFT OF P.I. #Z-023  
 CONCRETE MONUMENT STA 0+75 FUTURE  
 MARTIN RD #40' LT. N42°00'27.87"  
 E 807.000.00 ELEV. 304.68

TYPE OF BUILDING: FUTURE APTS & TOWNHOUSES
NO. OF LOTS: 4 PARCELS (BULK)
NUMBER OF WATERHOUSE CONN. N/A
NUMBER OF SEWERHOUSE CONN. N/A
DRAINAGE AREA: LITTLE PATUXENT

SEWER CODE: 5521000
WATER CODE: E-2B

GENERAL NOTES:

- PART I
- APPROXIMATE LOCATION OF EXISTING MAINS ARE SHOWN. THE CONTRACTOR SHALL TAKE ALL NECESSARY PRECAUTIONS TO PROTECT EXISTING MAINS AND SERVICES AND MAINTAIN UNINTERRUPTED SUPPLY. ANY DAMAGE INCURRED SHALL BE REPAIRED IMMEDIATELY TO THE SATISFACTION OF THE ENGINEER, AT THE CONTRACTOR'S EXPENSE.
  - ALL HORIZONTAL CONTROLS ARE BASED ON MARYLAND STATE COORDINATES.
  - ALL VERTICAL CONTROLS ARE BASED ON U.S.G.S. DATUM.
  - ALL PIPE ELEVATIONS SHOWN ARE INVERT ELEVATIONS.
  - CLEAR ALL UTILITIES BY A MINIMUM OF 6". CLEAR ALL POLES BY 2'-0" MIN. OR TUNNEL AS REQUIRED. ANY COST INCURRED TO THE CONTRACTOR FOR TUNNELING OR BRACING AT POLES SHALL BE INCLUDED IN UNIT PRICES BID FOR EXCAVATION AND BACKFILL.
  - FOR DETAILS NOT SHOWN ON DRAWINGS USE HOWARD COUNTY STANDARD DETAILS.
  - FOR MATERIALS AND CONSTRUCTION METHODS USE HOWARD COUNTY STANDARD SPECIFICATIONS.
  - CONTRACTOR SHALL LOCATE EXISTING UTILITIES A MINIMUM OF TWO (2) WEEKS IN ADVANCE OF CONSTRUCTION OPERATIONS IN THE VICINITY OF PROPOSED UTILITIES AT HIS OWN EXPENSE.
  - CONTRACTOR SHALL NOTIFY THE FOLLOWING UTILITIES OR AGENCIES AT LEAST FIVE (5) WORKING DAYS BEFORE STARTING WORK SHOWN ON THESE PLANS:
    - STATE HIGHWAY ADMINISTRATION: 531-5533
    - BALTIMORE GAS AND ELECTRIC CO. - UNDERGROUND ELECTRIC DISTRIBUTION (CUSTOMER SERVICE): 685-0123
    - BALTIMORE GAS AND ELECTRIC CO. - UNDERGROUND GAS DISTRIBUTION (CUSTOMER SERVICE): 685-0123
    - ENGINEERING "DAMAGE CONTROL": 234-5621
    - "MISS UTILITY": (1) 559-0100
    - CHESAPEAKE AND POTOMAC (C & P) TELEPHONE COMPANY: 725-9976
    - AMERICAN TELEPHONE AND TELEGRAPH - CABLE LOCATION DIV: 393-3553
    - COLONIAL PIPELINE COMPANY: 781-4641
    - BUREAU OF UTILITIES HOWARD COUNTY: 992-2366
  - TREES ARE TO BE PROTECTED FROM DAMAGE TO MAXIMUM EXTENT. TREES LOCATED WITHIN THE CONSTRUCTION STRIP ARE NOT TO BE REMOVED OR DAMAGED BY THE CONTRACTOR.
  - CONTRACTOR SHALL REMOVE TREES, STUMPS AND ROOTS ALONG LINE OF EXCAVATION AS DIRECTED BY THE ENGINEER. PAYMENT FOR SUCH REMOVAL SHALL BE INCLUDED IN THE UNIT PRICE BID FOR EXCAVATION AND BACKFILL.
  - PLACE REGULATION "MEN WORKING" AND WARNING SIGNS AS REQUIRED TO COMPLY WITH MARYLAND STATE HIGHWAY ADMINISTRATION MANUAL OF TRAFFIC CONTROL FOR HIGHWAY CONSTRUCTION AND MAINTENANCE OPERATIONS.



PLAN  
SCALE: 1"=600'

INDEX OF SHEETS

SHEET NO.	DESCRIPTION
1	TITLE SHEET
2	12" WATER MAIN PLAN AND PROFILE
3	12" WATER MAIN PLAN AND PROFILE
4	8" SANITARY SEWER PLAN AND PROFILE

PART III

- ALL SEWER MAINS SHALL BE C.S.P.X., R.C.S.P., V.C.P.X., A.C.P. CLASS 2400 OR P.V.C. UNLESS OTHERWISE NOTED.
- THE CONTRACTOR SHALL PROVIDE A JOINT IN ALL SEWER MAINS WITHIN 2'-0" OF EXTERIOR MANHOLE WALL.
- ALL MANHOLES SHALL BE 4'-0" INSIDE DIAMETER UNLESS OTHERWISE NOTED.
- MANHOLES SHOWN WITH 12" AND 16" WALLS ARE BRICK MANHOLES ONLY.
- MANHOLES DESIGNATED W.T. IN PLAN AND PROFILE SHALL HAVE WATER-TIGHT FRAME AND COVERS, STANDARD DETAIL 6552 WHERE WATER-TIGHT MANHOLE FRAME AND COVER IS USED, SET TOP OF FRAME 1'-6" ABOVE FINISHED GRADE UNLESS OTHERWISE NOTED ON THE DRAWINGS.

PART II

- ALL WATER MAINS TO BE C.I.P. OR D.I.P. UNLESS OTHERWISE NOTED.
- TOP OF ALL WATER MAINS TO HAVE A MINIMUM OF 3 1/2' COVER UNLESS OTHERWISE NOTED.
- VALVES ADJACENT TO TEES SHALL BE STRAPPED TO TEES.
- BLOCK ALL FITTINGS WITH CONCRETE.
- BURY LINE ELEVATIONS ON FIRE HYDRANTS SHALL BE SET TO THE ELEVATIONS SHOWN ON THE DRAWINGS. ALL FIRE HYDRANTS SHALL BE STRAPPED AND BUTTRESSED WITH CONCRETE IN ACCORDANCE WITH STANDARD DETAILS. SOIL AROUND THE FIRE HYDRANT TO BE COMPACTED IN ACCORDANCE WITH SECT. 10.03(10.08) OF THE STANDARD SPECIFICATIONS.
- THE CONTRACTOR SHALL NOT OPERATE ANY WATER MAIN VALVES ON THE EXISTING SYSTEM.

QUANTITIES				
ITEM	UNIT	ESTIMATED	AS-BUILT	MATERIAL-SUPPLIER
8" SEWER	L.F.	422	872	MUNICIPAL CONTRACTOR SALES
MANHOLE	NO.	5	5	ATLANTIC PROJECT
12" WATER	L.F.	2639	2637	GRIFFIN
12" VALVE	NO.	2	2	GRIFFIN M&C
8" WATER	L.F.	205	222	GRIFFIN
8" VALVE	NO.	0	0	M&C
FIRE HYDRANT	NO.	7	7	M&C
16" X 12" TEE	EA.	1	0	GRIFFIN

SEDIMENT CONTROL NOTES

- FOR SEDIMENT CONTROL FOR WATER MAIN, SEE THE APPROVED ROAD CONSTRUCTION PLANS FOR FILE GP 85-36
- MATERIAL FROM TRENCH EXCAVATION TO BE PLACED ON UPHILL SIDE OF TRENCH
- CONTRACTOR TO BACKFILL, COMPACT AND STABILIZE IMMEDIATELY AFTER INSTALLATION OF PIPE. NO TRENCHES WILL BE LEFT OPEN AT THE END OF EACH DAY, EXCEPT THAT PORTION WHERE WORK HAS STOPPED.
- ANY SEDIMENT CONTROL FACILITIES ENCOUNTERED DURING PIPE CONSTRUCTION TO BE RETURNED TO ORIGINAL CONDITION IMMEDIATELY UPON COMPLETION OF THAT PORTION OF WORK.
- SEDIMENT CONTROL MEASURES FOR THIS CONTRACT WILL BE IMPLEMENTED IN ACCORDANCE WITH ARTICLE 15 OF THE HOWARD COUNTY STANDARD SPECIFICATIONS AND AS PER ROAD CONSTRUCTION PLANS F-85-101

NOTE: TIE-IN PERFORMED UNDER CONTRACT # 11 1328-D

REVIEWED FOR HOWARD SOIL CONSERVATION DISTRICT AND MEETS TECHNICAL REQUIREMENT.  
 Signature: *James M. Belmont* Date: 5/9/85  
 U.S. SOIL CONSERVATION SERVICE

THIS DEVELOPMENT PLAN IS APPROVED FOR SOIL EROSION AND SEDIMENT CONTROL BY THE HOWARD COUNTY CONSERVATION DISTRICT.  
 APPROVED: *Stephen A. Fuhr* DATE: 5/9/85  
 HOWARD S.C.D.

DEPARTMENT OF PUBLIC WORKS  
 HOWARD COUNTY, MARYLAND  
 Signature: *David F. Nealey* DATE: 5-16-85  
 DIRECTOR OF PUBLIC WORKS  
 Signature: *William J. Kelly* DATE: 5-14-85  
 CHIEF - BUREAU OF ENGINEERING  
 Signature: *William J. Kelly* DATE: 5-14-85  
 CHIEF - LAND DEVELOPMENT DIVISION

CENTURY ENGINEERING, INC.  
 CONSULTING ENGINEERS PLANNERS  
 32 WEST ROAD  
 TOWSON, MARYLAND 21286  
 Signature: *Gregory R. Klar* DATE: 5-11-85

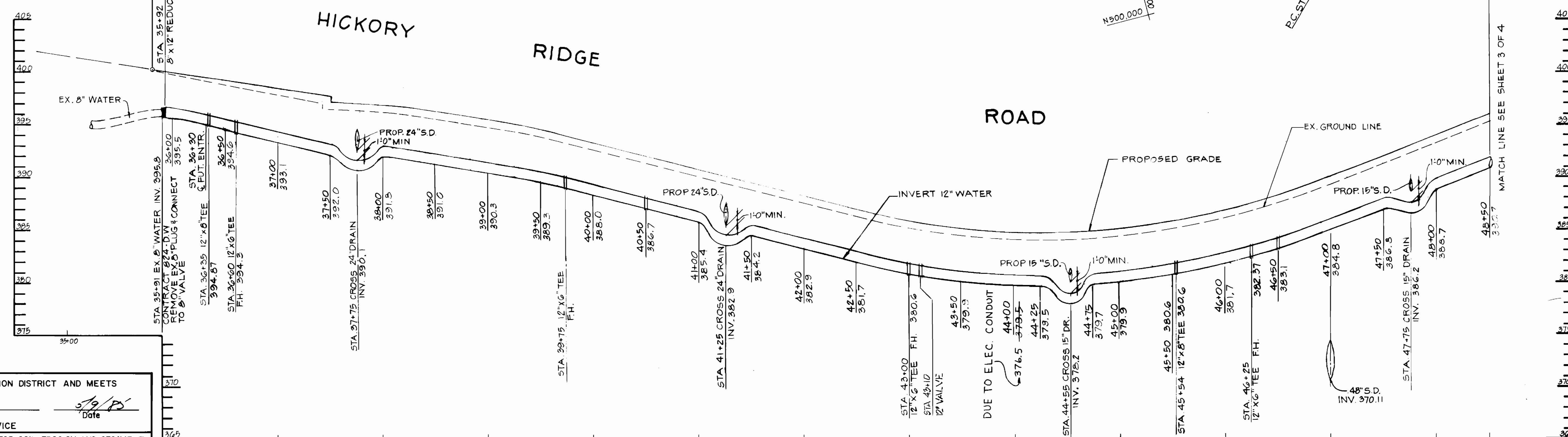
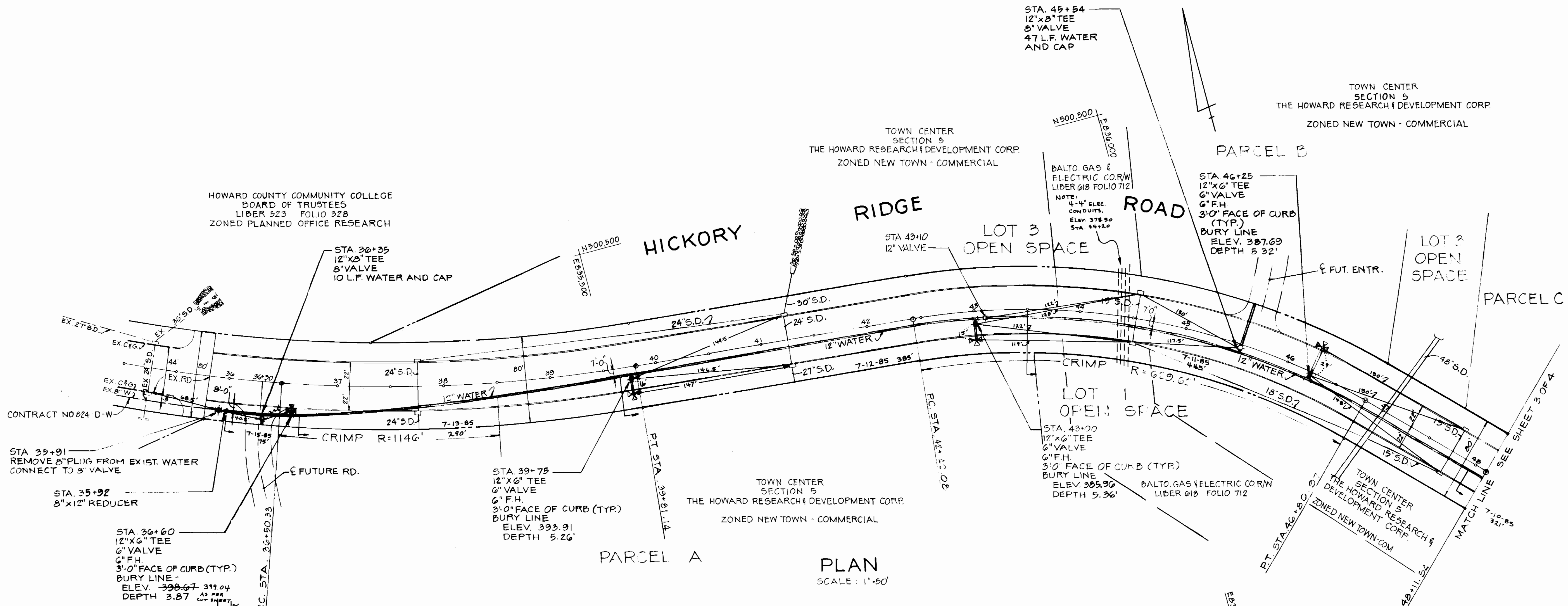
DES. J.A.G.  
 DRN. J.A.G.  
 CHK. AEB: 2 REVISION PER CD COMMENTS 5-8-85  
 AEB: 1 REVISION SHEET 3 OF 4 6-7-85  
 DATE: 5-11-85

NO.	REVISION	DATE
2	REVISION PER CD COMMENTS	5-8-85
1	REVISION SHEET 3 OF 4	6-7-85

12" WATER MAIN  
 8" SANITARY SEWER  
 PLAN AND PROFILE  
 600 SCALE MAP NO. \_\_\_\_\_ BLOCK NO. \_\_\_\_\_

VILLAGE OF HICKORY RIDGE  
 SECTION 5 AREAS 1&2  
 CONTRACT NO. 24-1353-D  
 5TH ELECTION DISTRICT  
 PARCEL 49 B 81  
 HOWARD COUNTY, MD.  
 TAX MAP 35 B 36

SCALE: AS SHOWN  
 SHEET 1 OF 4



REVIEWED FOR HOWARD SOIL CONSERVATION DISTRICT AND MEETS TECHNICAL REQUIREMENT.  
*James M. McLaughlin* 5/9/85  
 Signature Date  
 U. S. SOIL CONSERVATION SERVICE

THIS DEVELOPMENT PLAN IS APPROVED FOR SOIL EROSION AND SEDIMENT CONTROL BY THE HOWARD COUNTY CONSERVATION DISTRICT.  
*Stephen L. Wilson* 5/9/85  
 APPROVED DATE  
 HOWARD S.C.D.

**PROFILE**  
 SCALE HOR: 1"=50'  
 VERT: 1"=5'

DEPARTMENT OF PUBLIC WORKS  
 HOWARD COUNTY, MARYLAND  
*W. F. Newmyer* 5-16-86  
 DIRECTOR OF PUBLIC WORKS DATE  
*R. J. ...* 5-13-85  
 CHIEF-BUREAU OF UTILITIES DATE

CENTURY ENGINEERING, INC.  
 CONSULTING ENGINEERS PLANNERS  
 32 WEST ROAD  
 TOWSON, MARYLAND 21204  
*Gregory R. Klar* 3-11-85  
 GREGORY R. KLAR DATE

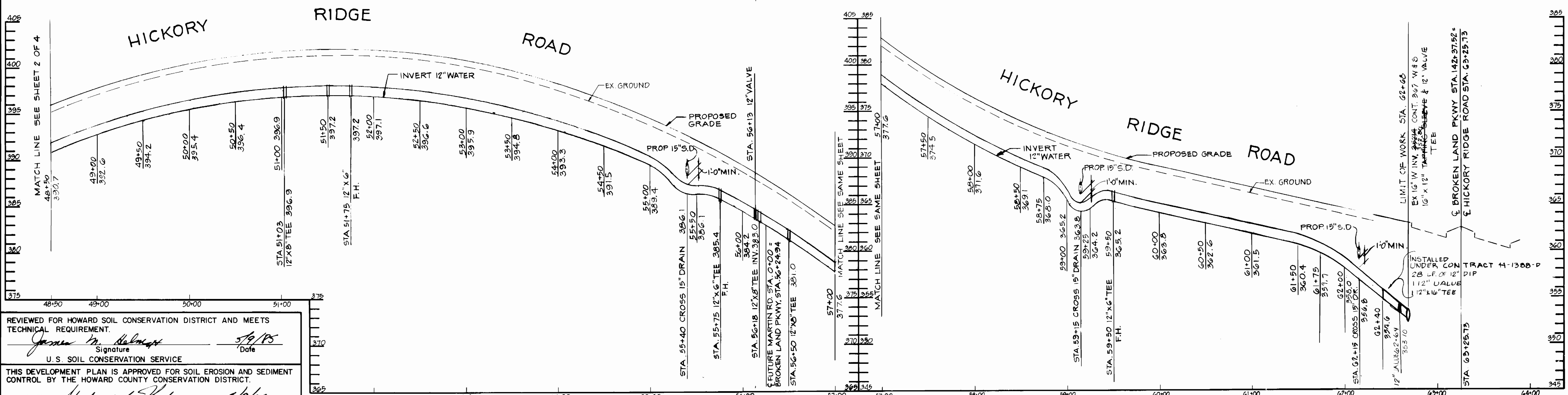
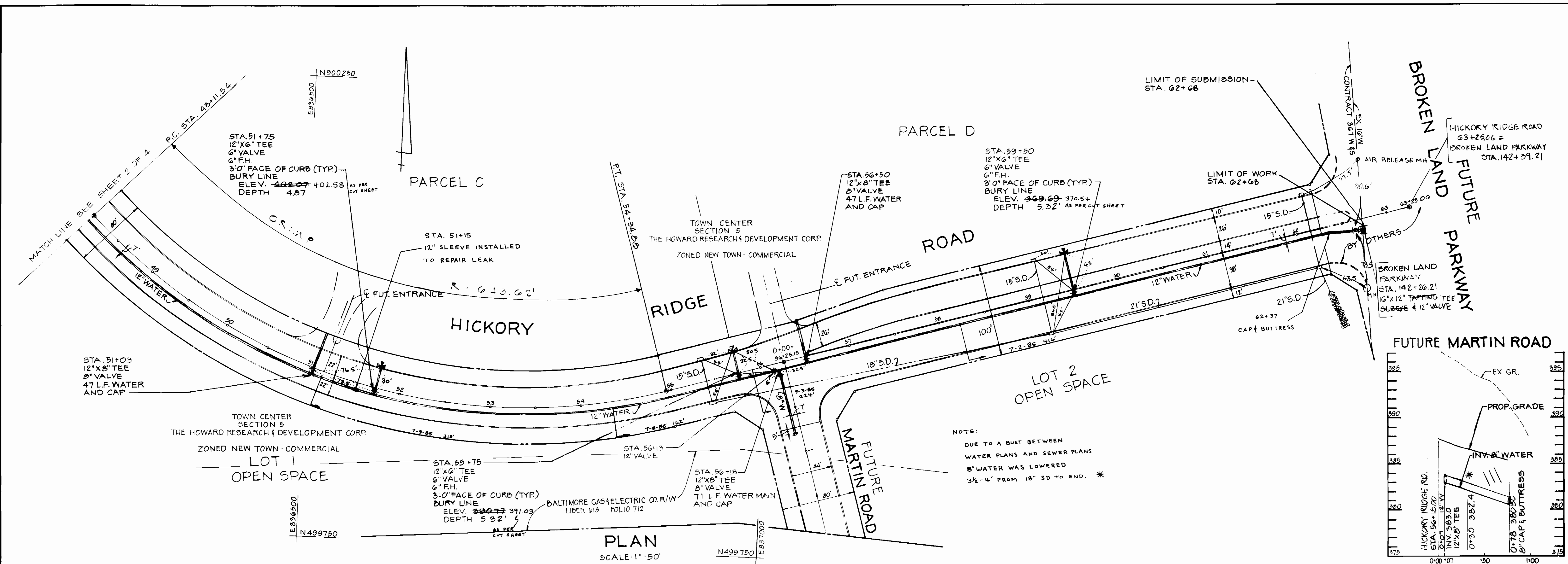
DES. J. A. G.					
DRN. J. A. G.					
CHK.					
DATE	APR 1	STA 43+10, 12" VALVE, 1989 CU COMMENTS	8-8-88		
BY	NO.	REVISION	DATE	600 SCALE MAP NO.	BLOCK NO.

12" WATER MAIN  
 PLAN AND PROFILE

VILLAGE OF HICKORY RIDGE  
 SECTION 5 AREAS 1 & 2  
 CONTRACT NO. 24-1983-D  
 5TH ELECTION DISTRICT  
 PARCEL 49 & 81  
 HOWARD COUNTY, MD.  
 TAX MAP 35 & 36

SCALE AS SHOWN  
 SHEET 2 OF 4

AS-BUILT 7-24-86



REVIEWED FOR HOWARD SOIL CONSERVATION DISTRICT AND MEETS TECHNICAL REQUIREMENT.

*James M. Helms* Signature Date 5/9/85

U.S. SOIL CONSERVATION SERVICE

THIS DEVELOPMENT PLAN IS APPROVED FOR SOIL EROSION AND SEDIMENT CONTROL BY THE HOWARD COUNTY CONSERVATION DISTRICT.

APPROVED: *Stephen A. Pank* DATE 5/9/85

HOWARD S.C.D.

DEPARTMENT OF PUBLIC WORKS  
HOWARD COUNTY, MARYLAND

*Wayne F. Nease* 5-16-85  
DIRECTOR - PUBLIC WORKS - DATE

*Robert M. Beaman* 5-13-85  
CHIEF - BUREAU OF UTILITIES - DATE

CENTURY ENGINEERING, INC.  
CONSULTING ENGINEERS PLANNERS

32 WEST ROAD  
TOWSON, MARYLAND 21204

*Gregory R. Klar* 5-11-85  
CHIEF - LAND DEVELOPMENT DIVISION - DATE

DES. J.A.G.

DRN. J.A.G.

CHK. A.E.B. 2 REVISED FUT. MARTIN RD. PWD/FILE S.C. COMMENTS 6-8-85

DATE A.E.B. 1 REVISED PLAN & PROFILE - LIMIT OF WORK 6/7/85

BY NO. REVISION DATE

12" WATER MAIN  
PLAN AND PROFILE

600 SCALE MAP NO. \_\_\_\_\_ BLOCK NO. \_\_\_\_\_

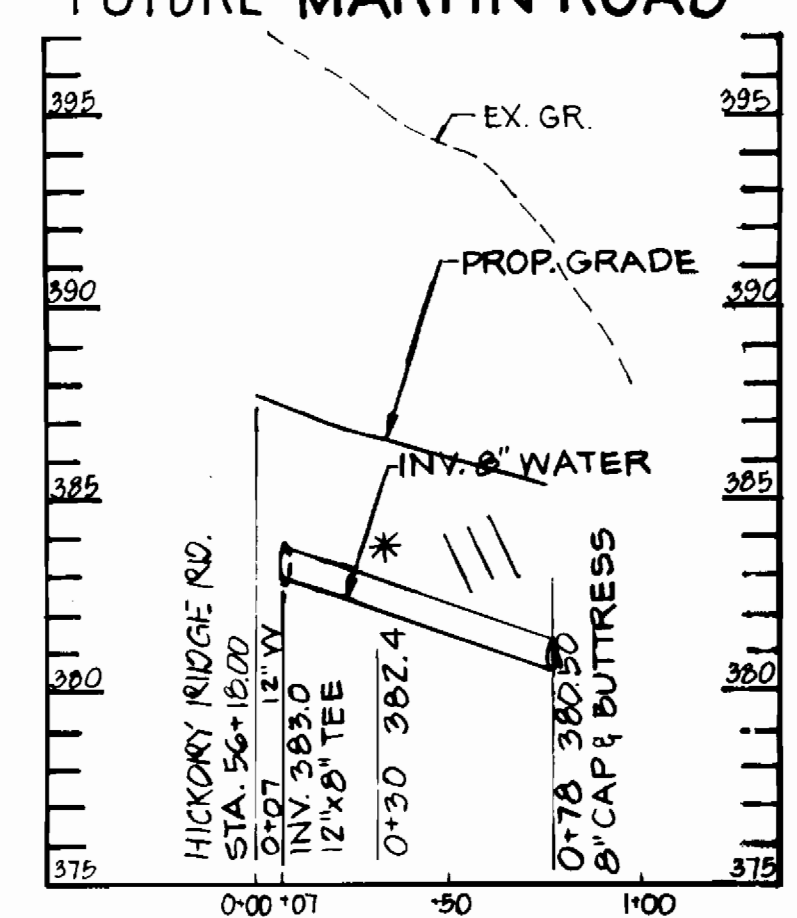
VILLAGE OF HICKORY RIDGE  
SECTION 5 AREAS 142

CONTRACT NO. 24-1388-17

5TH ELECTION DISTRICT HOWARD COUNTY, MD.  
PARCEL 49 & 81 TAX MAP 35 B 36

SCALE AS SHOWN

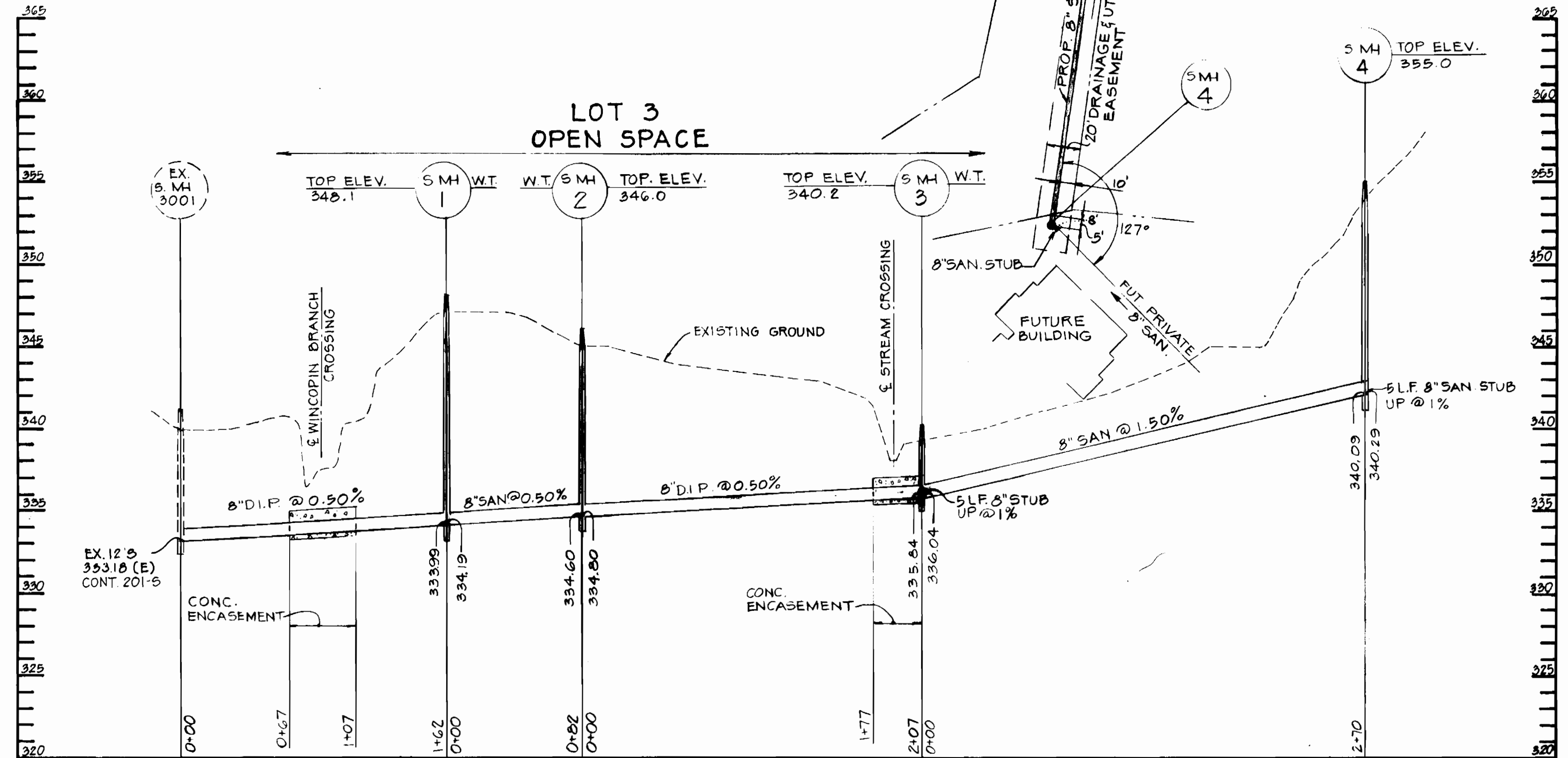
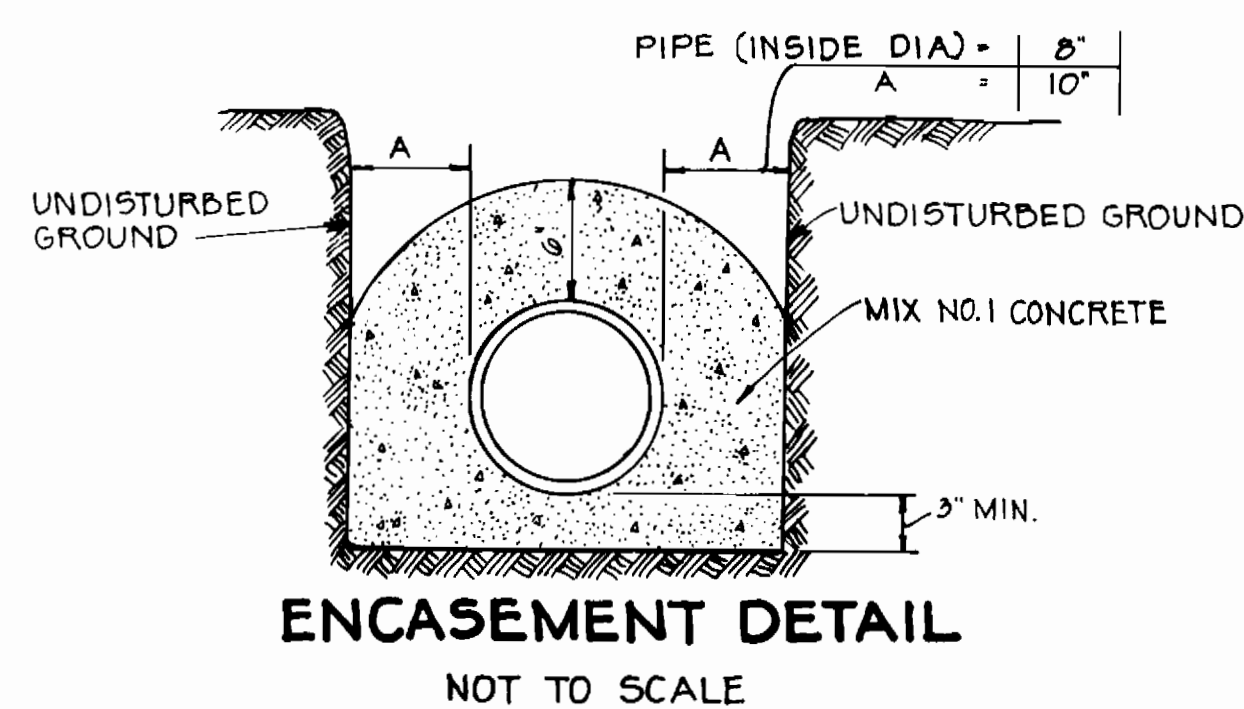
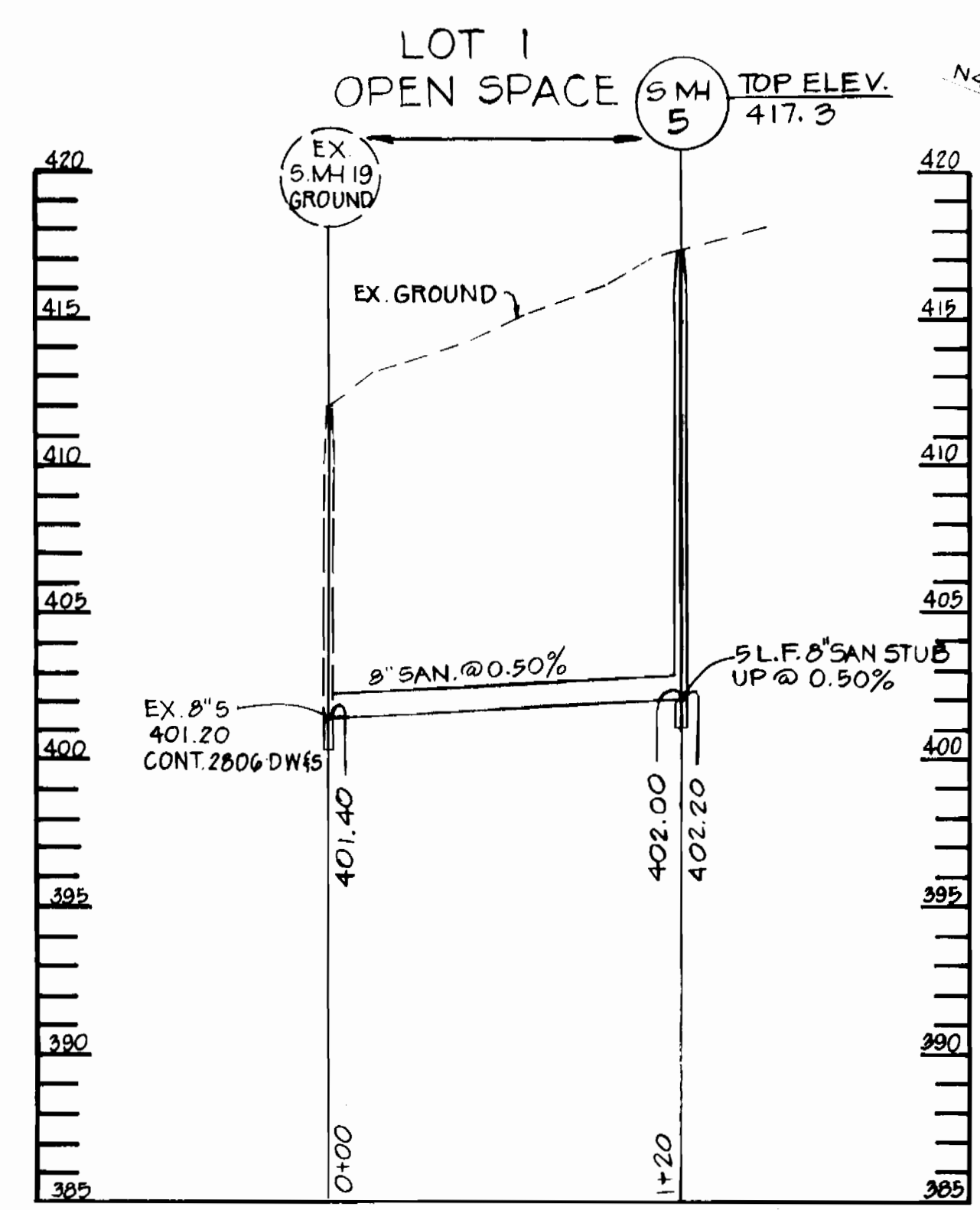
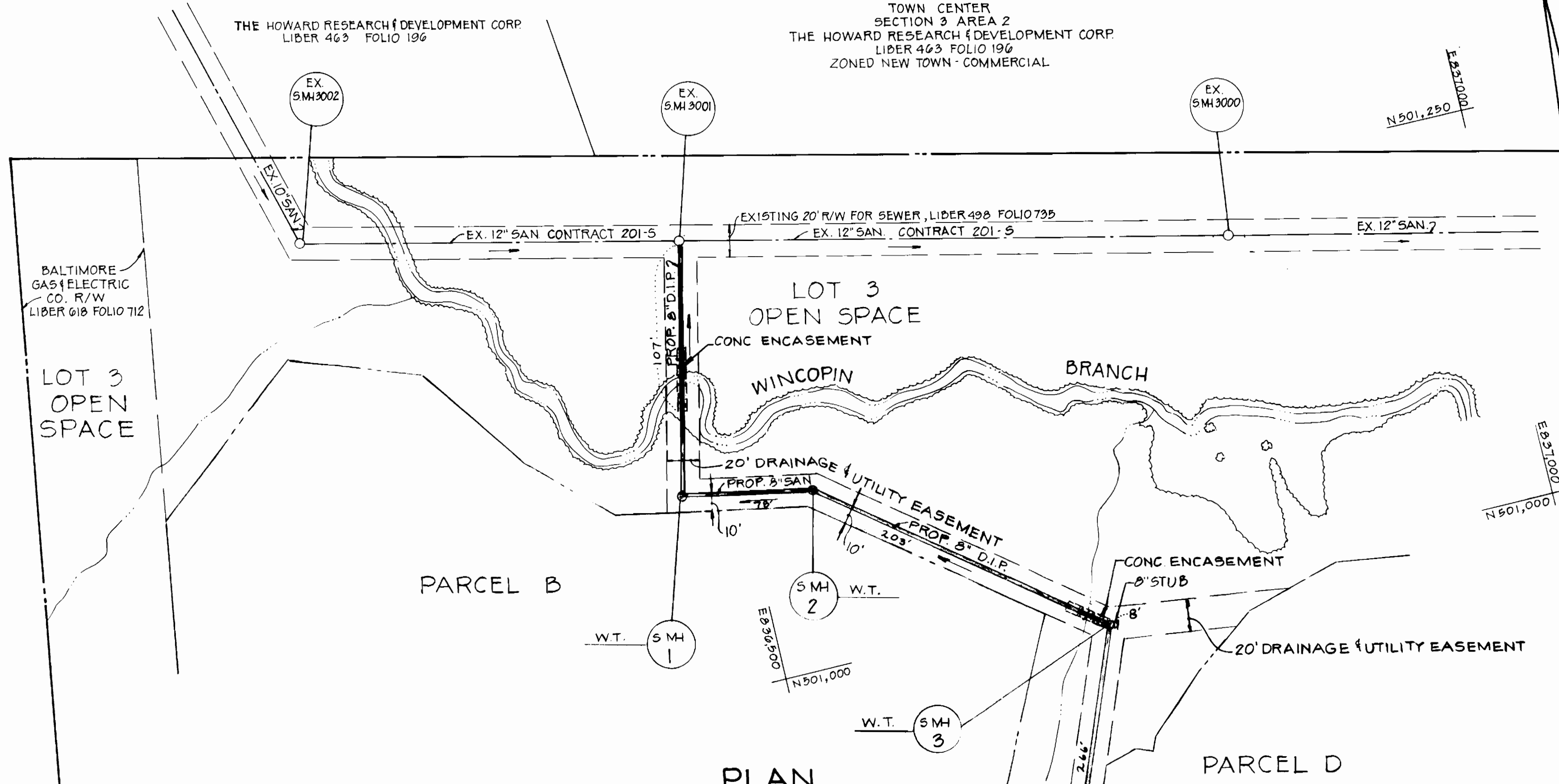
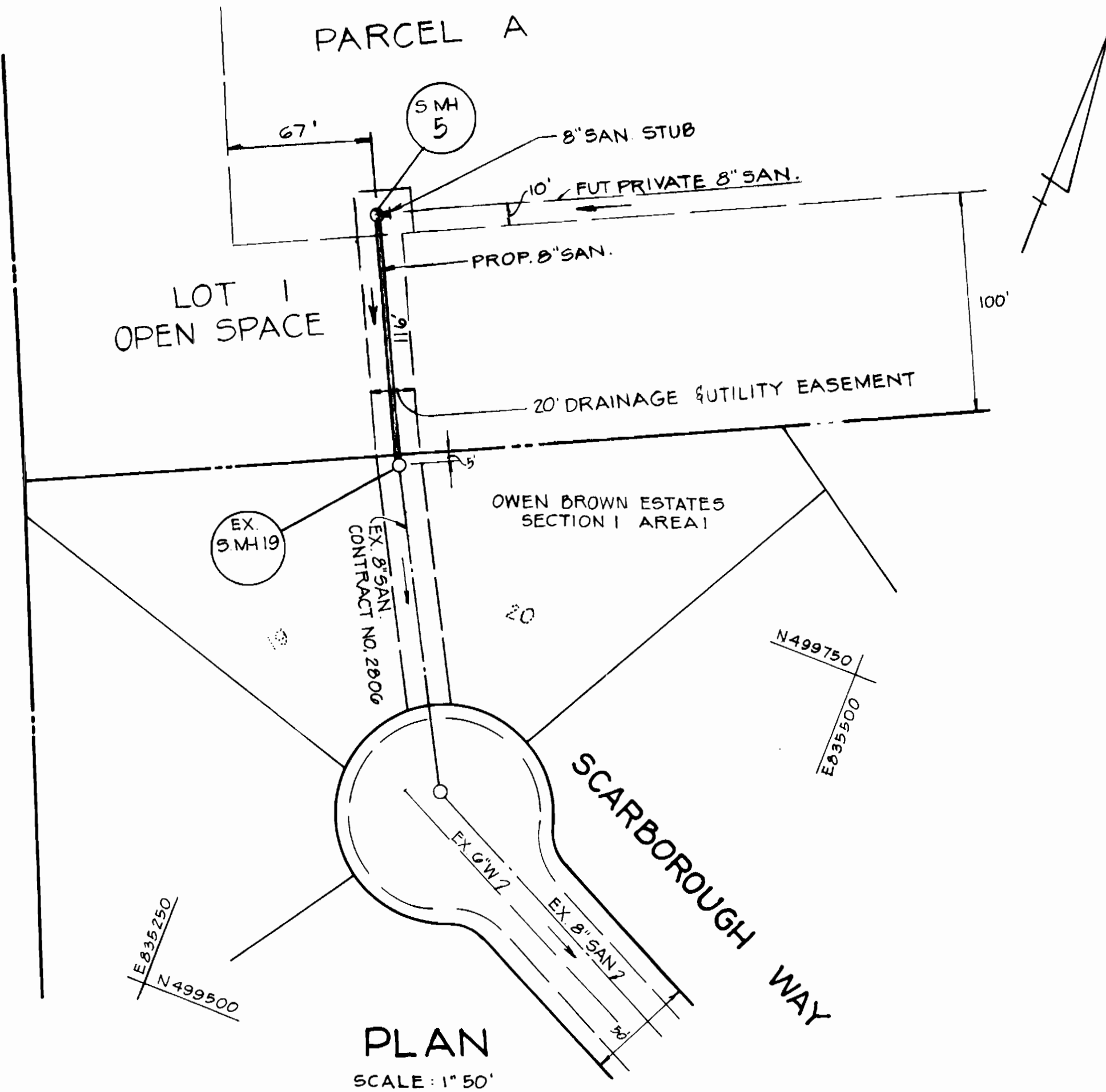
SHEET 3 OF 4



NOTE:  
DUE TO A BUST BETWEEN  
WATER PLANS AND SEWER PLANS  
8" WATER WAS LOWERED  
3/4" - 4" FROM 18" SD TO END. \*

PLAN  
SCALE: 1" = 50'

PROFILES  
SCALE: 1" = 5'



REVIEWED FOR HOWARD SOIL CONSERVATION DISTRICT AND MEETS TECHNICAL REQUIREMENT.  
 Signature: *James M. Wilcox* Date: *5/9/85*  
 U.S. SOIL CONSERVATION SERVICE  
 THIS DEVELOPMENT PLAN IS APPROVED FOR SOIL EROSION AND SEDIMENT CONTROL BY THE HOWARD COUNTY CONSERVATION DISTRICT.  
 APPROVED: *Stephen L. Pugh* DATE: *5/9/85*  
 HOWARD S.C.D.

DEPARTMENT OF PUBLIC WORKS  
 HOWARD COUNTY, MARYLAND  
 Director: *William F. Nunn* DATE: *5-16-85*  
 Chief - Bureau of Engineering: *Robert A. Brown* DATE: *5-13-85*  
 Chief - Bureau of JTH: *Robert A. Brown* DATE: *5-13-85*

CENTURY ENGINEERING, INC.  
 CONSULTING ENGINEERS PLANNERS  
 32 E. EST ROAD  
 TOWSON, MARYLAND 04

Signature: *Gregory R. Klar* DATE: *3-11-85*  
 GREGORY R. KLAR

DE: J.A.G.	
DRN: J.A.G.	
CHK:	
DATE:	

8" SANITARY SEWER  
 PLAN AND PROFILE

VILLAGE OF HICKORY RIDGE  
 SECTION 5 AREAS 1 & 2  
 CONTRACT NO. 24-1282-D  
 5TH ELECTION DISTRICT  
 PARCEL 49 & 81  
 HOWARD COUNTY, MD.  
 TAX MAP 35 & 36

SCALE AS SHOWN  
 SHEET 4 OF 4