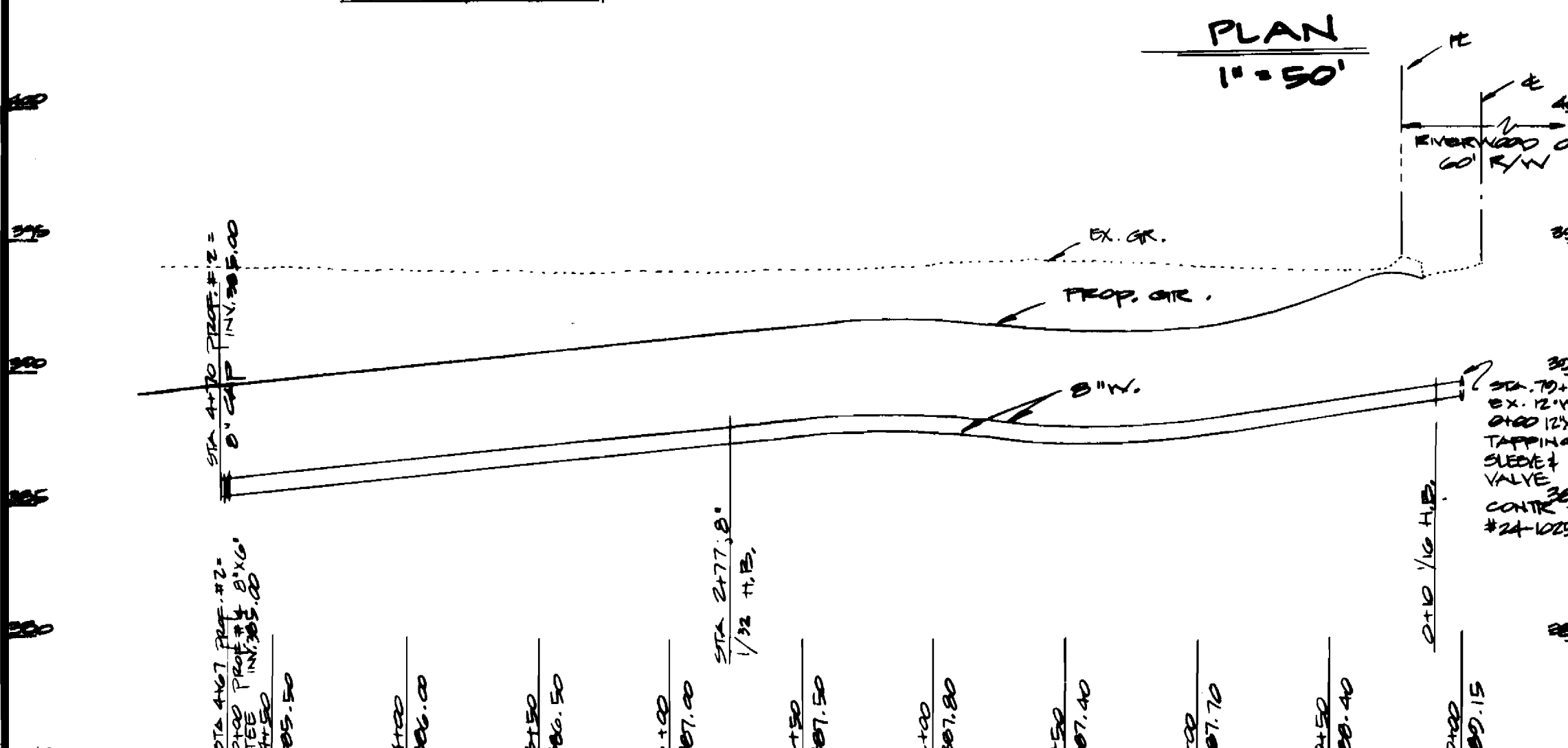
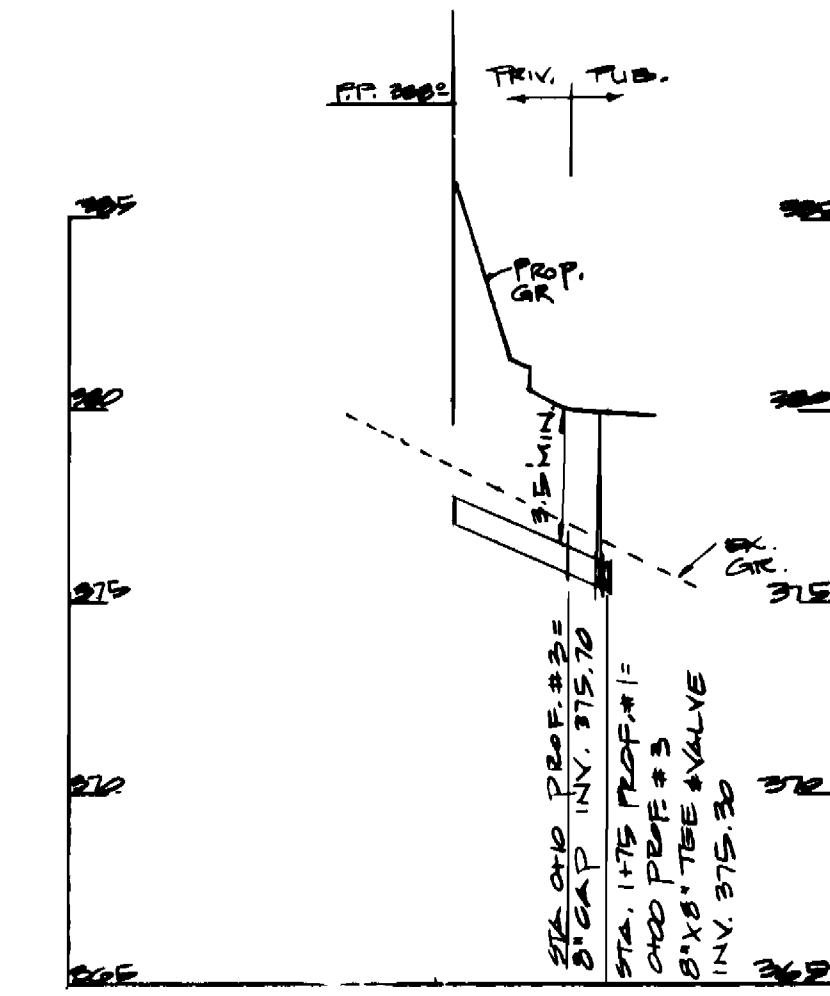
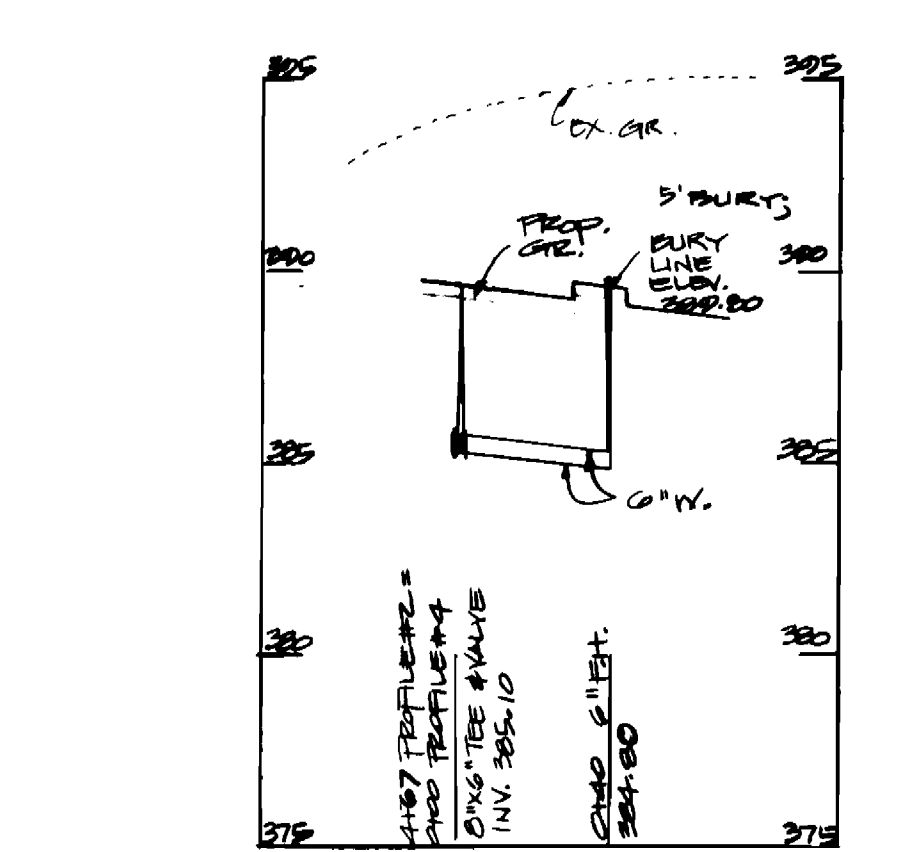
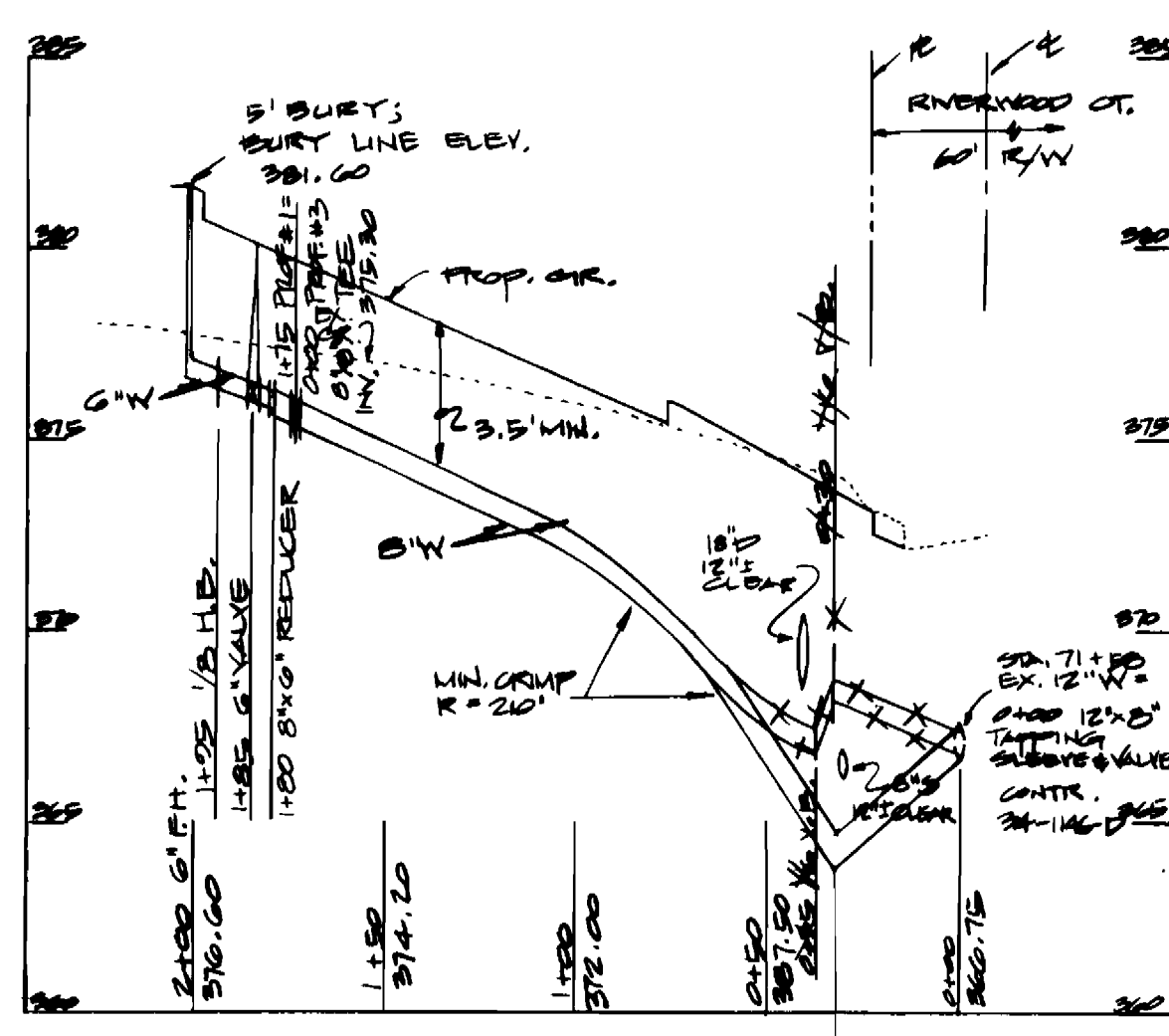


GENERAL NOTES

- Approximate location of existing mains are shown. The contractor shall take all necessary precautions to protect existing mains and services and maintain uninterrupted supply. Any damage incurred shall be repaired immediately to the satisfaction of the engineer at the contractor's expense.
- All horizontal controls are based on Maryland State Coordinates.
- All vertical controls are based on U.S.G.S. data.
- All pipe elevations shown are invert elevations.
- Clear all utilities by a minimum of 6'. Clear all poles by 2'-0" minimum or tunnel as required. The owner has contacted the utilities companies and has made arrangements for bracing of poles as shown on the drawings. In the event the contractor's work requires the bracing of additional poles, any cost incurred by the owner for the bracing of additional poles or damages shall be deducted from money owed the contractor. The contractor shall coordinate with the utility companies to schedule the bracing of poles.
- For details not shown on the drawings, and for materials and construction methods, use the Howard County Design Manual, Volume IX, Standard Specifications and Details for Construction. The contractor shall have a copy of Volume IX on the job.
- Where test pits have been made on existing utilities, they are noted by the symbol B at the location of the test pit. A note or notes containing the results of the test pit or pits is included on the drawings. Existing utilities in the vicinity of the proposed work for which test pits have not been dug shall be located by the contractor two weeks in advance of construction operations at his own expense.
- Contractor shall notify the following utilities or agencies at least five working days before starting work shown on these plans:
 - State Highway Administration - 531-5533
 - Baltimore Gas & Electric Co. - Contractor Services 561-2565
 - Baltimore Gas & Electric Co. - Underground Damage Control - 234-5621
 - Baltimore Gas & Electric Co. - Trouble Shooting - 728-2015
 - Mass Utility - 1-559-0100
 - Colonial Pipeline Co. 705-1350
 - Bureau of Utilities, Howard County Department of Public Works - 992-2366
- Trees and shrubs are to be protected from damage to maximum extent. Trees and shrubs located within the construction strip are not to be removed or damaged by the contractor.
- Contractor shall remove trees, stumps and roots along line of excavation. Payment for such removal shall be included in the unit price bid for construction of the main.
- Water mains to be D.P. unless otherwise noted.
- Top of all water mains to have a minimum of 3/2' cover unless otherwise noted.
- Valves adjacent to tees shall be strapped to tees.
- All fittings shall be outtressed or anchored with concrete in accordance with the standard details unless otherwise provided for on the drawings.
- Fire hydrants shall be set to the bury line elevations shown on the drawings. All fire hydrants shall be strapped and outtressed with concrete in accordance with standard details. Soil around the fire hydrants shall be compacted in accordance with section 1003 of the standard specifications.
- The contractor shall not operate any water main valves on the existing water system.
- All water house connections shall be for inside meter settings.



REVIEWED FOR HOWARD SOIL CONSERVATION DISTRICT AND MEETS TECHNICAL REQUIREMENT
 JAMES M. ALBERT
 U.S. SOIL CONSERVATION SERVICE

PROFILE #2
 HORIZ: 1" = 50'
 VERT: 1" = 5'

THIS DEVELOPMENT PLAN IS APPROVED FOR SOIL EROSION AND SEDIMENT CONTROL BY HOWARD SOIL CONSERVATION DISTRICT
 APPROVED:
 STEPHEN J. FISHER
 HOWARD SOIL CONSERVATION SERVICE

SEDIMENT CONTROL MEASURES FOR THIS CONTRACT WILL BE IMPLEMENTED IN ACCORDANCE WITH ARTICLE 15 OF THE STANDARD SPECIFICATION AND S.D.P. 85-090

DEPARTMENT OF PUBLIC WORKS
 HOWARD COUNTY, MARYLAND
 DIRECTOR OF PUBLIC WORKS
 CHIEF, BUREAU OF ENGINEERING

WILLIAM R. SUDECK AND ASSOCIATES, INC.
 112 SOUTH MAIN STREET
 BBL AIR, MARYLAND 2104
 836-5895 879-4953

DES. R.W.R.	DATE	BY	NO.	REVISION
	1-25-85			

PLAN & PROFILE FOR PROPOSED WATER MAIN
 CONTRACT NO. 44-1343-D
 600 SCALE MAP NO. BLOCK NO.

ITEM	QUANTITIES	ESTIMATED	AS BUILT	MATERIAL/SUPPLIER
12" X 6" TEE	2 EA.	2 EA.	2 EA.	Municipals Contractors
8" VALVE	3 EA.	3 EA.	3 EA.	"
8" 1/2" BEND	2 EA.	2 EA.	2 EA.	"
8" X 6" TEE	1 EA.	1 EA.	1 EA.	"
8" X 6" TEE	1 EA.	1 EA.	1 EA.	"
8" DIP (WATER)	60 LF	60 LF	60 LF	Griffin Pipe
8" X 6" REDUCER	1 EA.	1 EA.	1 EA.	"
8" CAP	2 EA.	2 EA.	2 EA.	"
6" DIP (WATER)	60 LF	60 LF	60 LF	"
6" F.H. (8" BURY)	2 EA.	2 EA.	2 EA.	"
6" F.H. VALVE	2 EA.	2 EA.	2 EA.	"

RIVERS CORPORATE PARK
 SECTION 1 AREA 2 PARCEL 'B'
 HOWARD COUNTY, MARYLAND ELECTION DIST. #6
 JANUARY 25, 1985