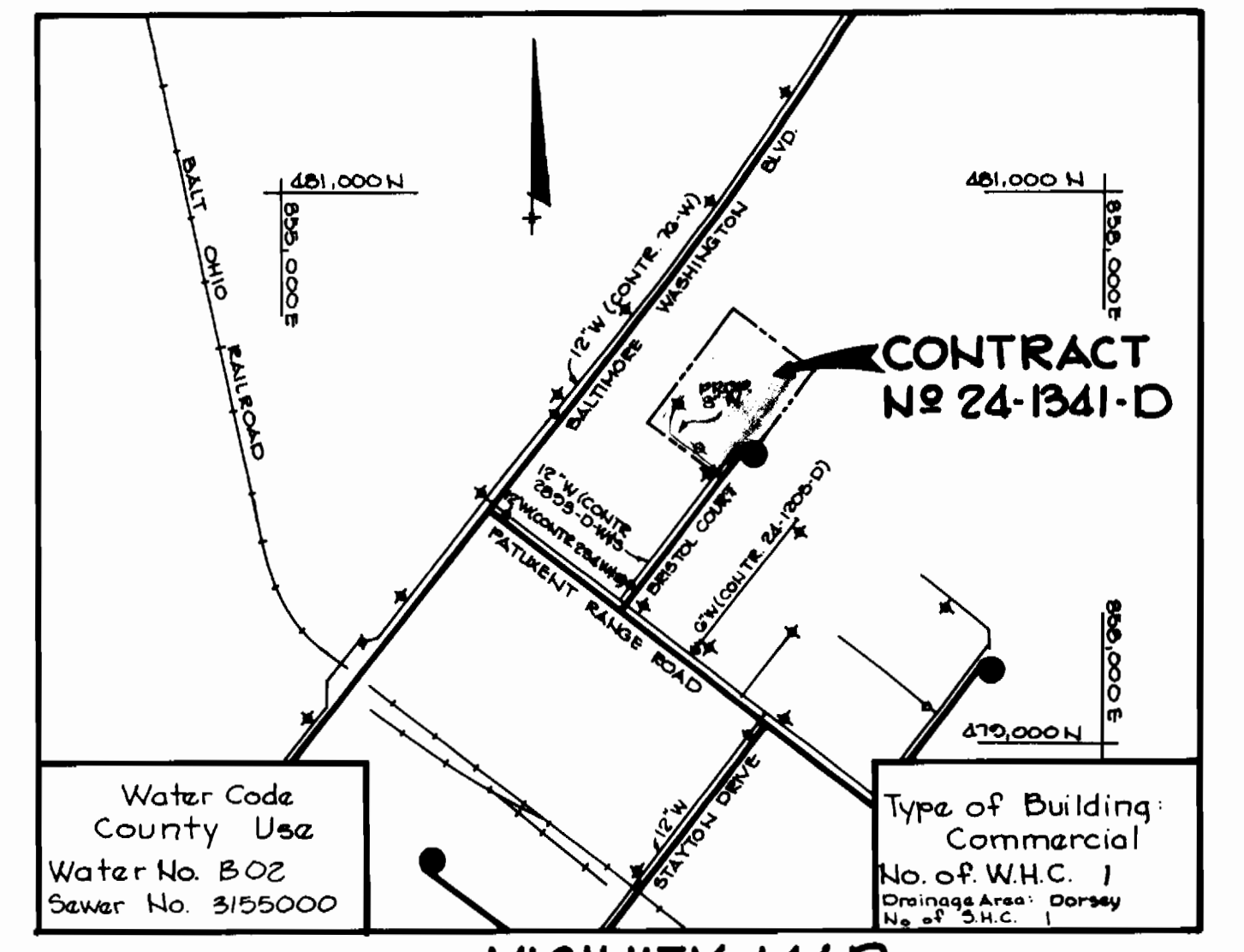


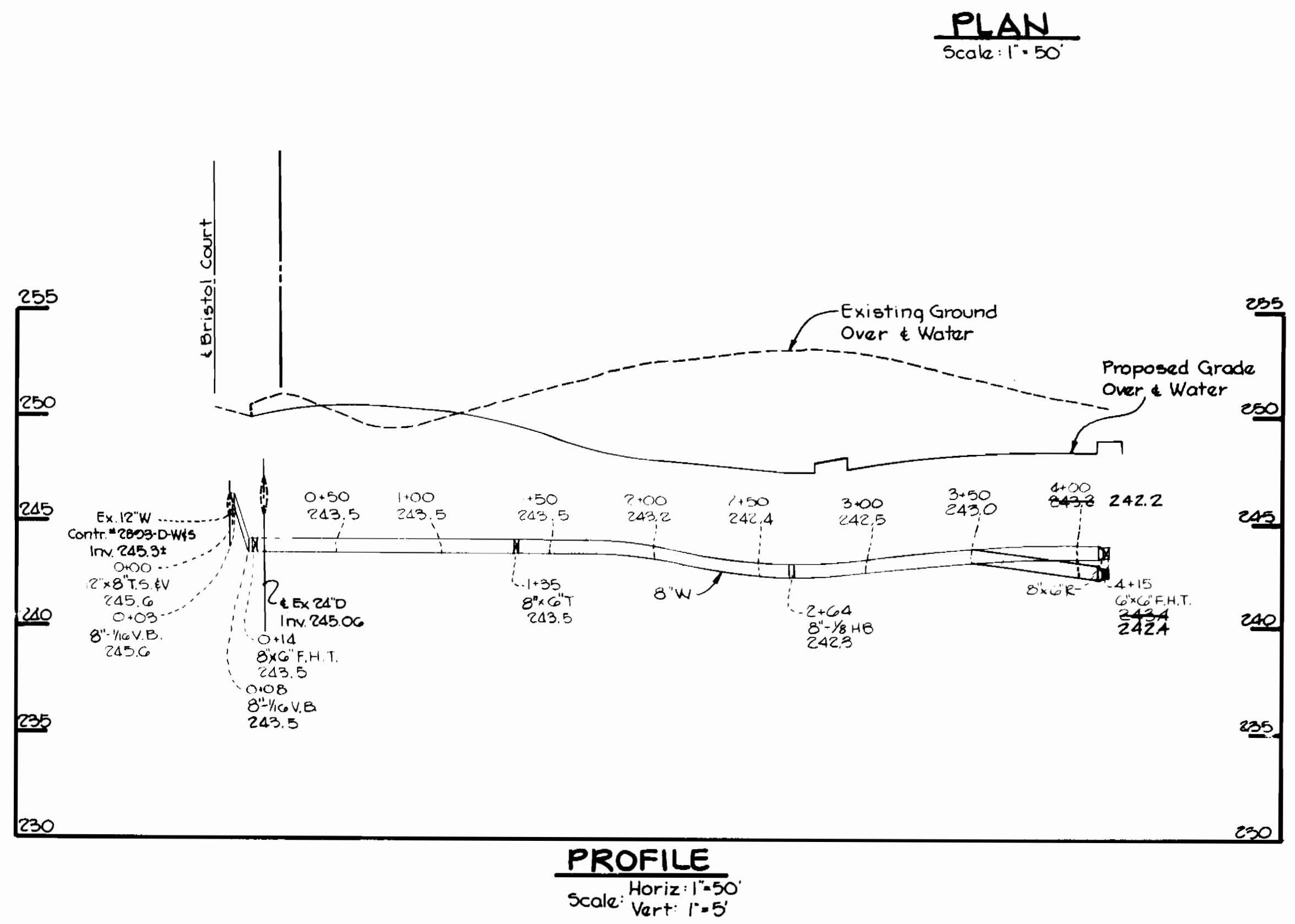
BENCH MARKS
 BM #1 ELEV. 256.25
 PK Nail in E of cul de sac on Bristol Court
 BM #2 ELEV. 267.16
 Top of fire hydrant at the corner of Bristol Court and Patuxent Range Drive.



GENERAL NOTES

- Approximate location of existing mains are shown. The contractor shall take all necessary precautions to protect existing mains and services and maintain uninterrupted supply. Any damage incurred shall be repaired immediately to the satisfaction of the Engineer at the Contractor's expense.
- All horizontal controls are based on Maryland State Coordinates.
- All vertical controls are based on U.S.G.S. data.
- All pipe elevations shown are invert elevations.
- Clear all utilities by a minimum of 6' clearance. In the event the contractor's work requires the bracing of additional poles, any cost incurred by the owner for the bracing of additional poles or damages shall be deducted from money owed the contractor. The contractor shall coordinate with the utility companies to schedule the bracing of the poles.
- For details not shown on the drawings, and for materials and construction methods, use Howard County Design Manual, Volume IV, Standard Specifications and Details for Construction. The contractor shall have a copy of Volume IV on the job.
- Where test pits have been made on existing utilities, they are noted by the symbol [] at the location of the test pit. A note or notes containing the results of the test pit or pits is included on the drawings. Existing utilities in the vicinity of the proposed work for which test pits have not been dug shall be located by the contractor two weeks in advance of construction operations at his own expense.
- Contractor shall notify the following utilities or agencies at least five working days before starting work shown on these plans:

State Highway Administration	531-5533
Baltimore Gas & Electric Co. - Contractor Services	561-2585
Baltimore Gas & Electric Co. Under Ground Damage Control	234-5621
Baltimore Gas & Electric Co. Trouble Shooting	208-5013
Miss Utility	1-550-0100
Colonial Pipeline Co.	705-1300
Bureau of Utilities, Howard County Department of Public Works	292-2966
- Trees are to be protected from damage to maximum extent. Trees located within the construction strip are not to be removed or damaged by the contractor.
- Contractor shall remove trees, stumps and roots along line of excavation as directed by the Engineer. Payment for such removal shall be included in the unit price bid for excavation and backfill.
- Place regulation "Men Working" and warning signs as required to comply with Maryland State Highway Administration Manual of Traffic Control for Highway Construction and Maintenance Operations.
- All water mains to be D.I.P. unless otherwise noted.
- Top of all water mains to have a minimum of 3 1/2' cover unless otherwise noted.
- Valves adjacent to trees shall be strapped to trees.
- Block all fittings with concrete.
- Bury line elevations on fire hydrants shall set to the elevations shown on the drawings. All fire hydrants shall be strapped and buttressed with concrete in accordance with standard details. Soil around the fire hydrant to be compacted in accordance with Section 1003 & 1008 of the General Requirements for water and sewer.
- All water house connections shall be for an inside meter setting.
- The contractor shall not operate any water main valves on the existing system.
- For all copper water house connections utilize flared type fittings only.
- Profile stations shall be adjusted as necessary to conform to plan dimensions.
- No pipe shall be laid until line of excavation have been brought to subgrade.



Sediment control measures for this contract will be implemented in accordance with article 15 of the specifications and SDP-85-117

Howard Soil Conservation District Reviewed for Howard Soil Conservation District and meets technical requirements

J. Helms 4/1/85 Date
 U.S. Soil Conservation Service
 This plan is approved for soil erosion and sediment control by the Howard Soil Conservation District

Stephen K. Guler 4/1/85 Date
 Howard Soil Conservation District

ITEM	QUANTITIES		ESTIMATED AS BUILT MATERIAL/SUPPLIER
	ESTIMATED	AS BUILT	
12" x 8" T.S. #4	1	1	TRAPPING SLEEPER CLOW
8" W	415	415	CL 572 PUCTURE / SHIFFIN
GV's (excl. F.H.V's)	1	1	M.S. GATE / MIN VALVE CO.
F.H.'s	21	1	MODEL # 929 / M&H VALVE CO.
RELOCATE F.H.	1	1	

DEPARTMENT OF PUBLIC WORKS
 HOWARD COUNTY, MARYLAND

John F. Nummy 4-17-85 DATE
 DIRECTOR OF PUBLIC WORKS

William S. Day 4/1/85 DATE
 CHIEF, BUREAU OF ENGINEERING

William F. Price 4/1/85 DATE
 CHIEF, LAND DEVELOPMENT DIVISION

THE RIEMER GROUP, INC.
 3105 HEALTH PARK DRIVE
 ELLICOTT CITY, MARYLAND 21043

Patrick C. Jennings II
 PATRICK C. JENNINGS II



DES: D.A.M.			
DRN: D.A.M.			
CHK: J.D.P.			
DATE: 1-4-85	BY: D.A.M.	NO. 1	REVISION: Changed water main from 10" to 8"

PLAN AND PROFILE OF A WATER MAIN

600' SCALE MAP NO. 40 BLOCK NO. _____

BW.I.P. PARCEL M
 ELECTION DISTRICT NO. 2
 CONTRACT NO. 24-1341-D

SCALE AS SHOWN

SHEET 1 OF 1