

Water Code: B O I
County Use
Water No. B O I

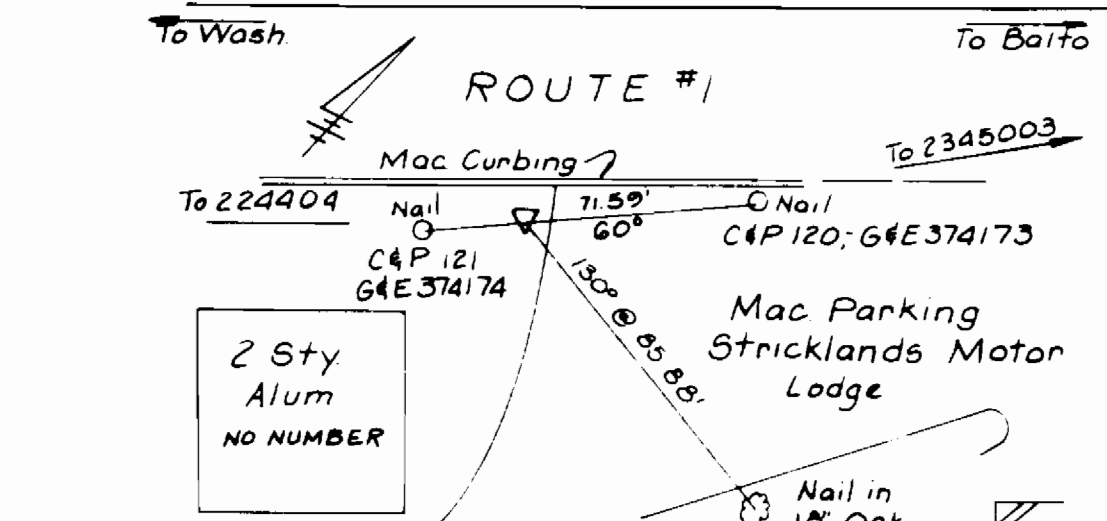
VICINITY MAP Waste Water Disposal:
Patapsco River

SCALE 1"=600'

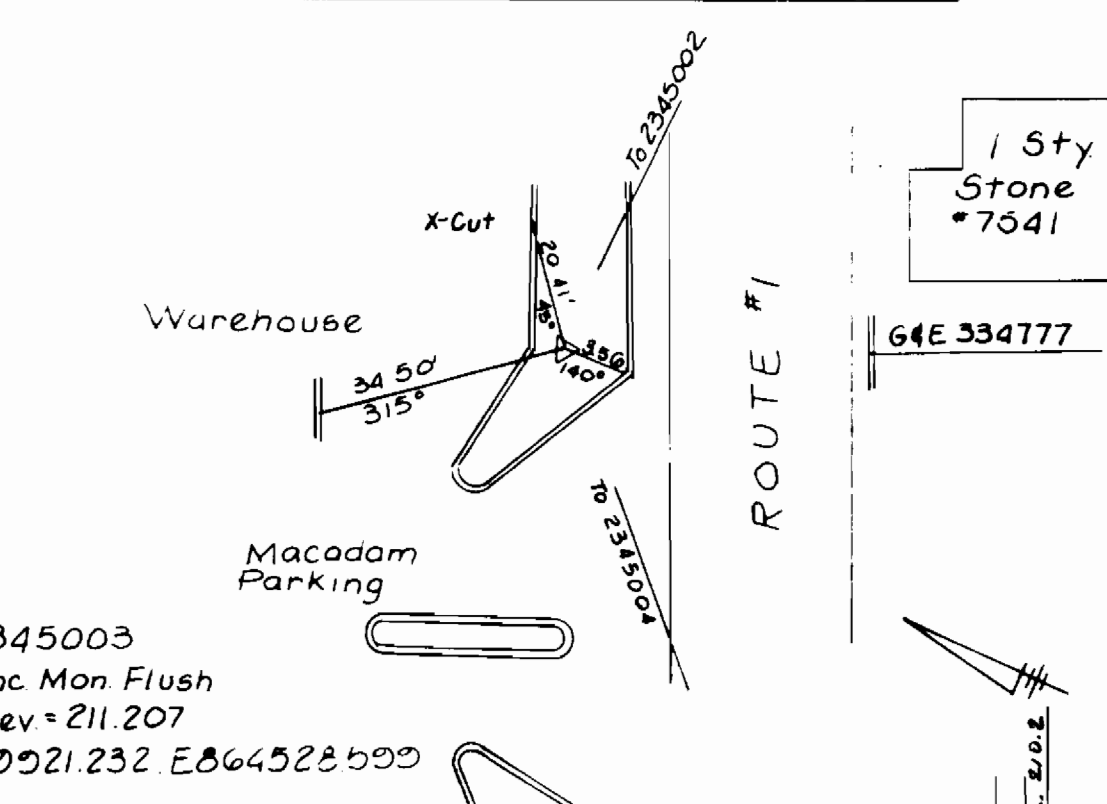
GENERAL NOTES

Type of Bldg: Commercial
No. of WHC: None

1. Approximate location of existing mains are shown. The contractor shall take all necessary precautions to protect existing mains and services and maintain uninterrupted supply. Any damage incurred shall be repaired immediately to the satisfaction of the Engineer, at the Contractor's expense.
2. All horizontal controls are based on Maryland State Controls.
3. All vertical controls are based on U.S.G.S. Data.
4. All pipe elevations shown are invert elevations.
5. Clear all utilities by a minimum of 6" Clear all poles by 2'-0" min or tunnel as required. The owner must contact the utility companies and make arrangements for bracing poles. In the event the contractor work requires the grading of additional poles, any cost incurred by the owner for such bracing or any damages shall be deducted from money owed the contractor. The contractor shall coordinate with the utility companies to schedule the bracing of the poles.
6. For details not shown on the drawings, and for materials and construction methods, use Howard Co. Design Manual, Vol. IV, Standard Specifications and Details for Construction. The Contractor shall have a copy of Vol. IV on the job.
7. Where test pits have been made on existing utilities, they are noted by the symbol at the location of the test pit. A note or notes containing the results of the test pit or pits is included on the drawings. Existing utilities in the vicinity of the proposed work for which test pits have been dug shall be located by the contractor two (2) weeks in advance of construction, at his own expense.
8. Contractor shall notify the following utilities or agencies at least five (5) working days before starting work shown on these plans:
 - State Highway Administration 531-5533
 - Balta Gas & Electric Co. Contractor Ser 561-2585
 - Balta Gas & Electric Co. Underground Damage 234-5901
 - Howard County Bureau of Utilities 992-2300
 - Balta Gas & Electric Co. Underground Gas Distribution Engineering 555-0100
 - Miss Utility 781-4641
 - Colonial Pipeline Co. 725-5976
 - C&T Telephone Co. American Telegraph & Telephone Co. Cable Location Division 325-3533
9. Trees are to be protected from damage to maximum extent. Trees located within the construction strip are not to be removed or damaged by the contractor.
10. Contractor shall remove trees, stumps, and roots, along line of excavation as directed by the engineer. Payment for such removal shall be included in the unit price bid for the excavation and back fill.
11. Place regulation "Men Working" and warning signs as required to comply with Maryland State Highway Administration Manual of Traffic Control for Highway Construction and Maintenance Operations.
12. All water mains to be D.I.P. unless otherwise noted.
13. Top of all water mains to have a min. of 3 1/2" cover unless otherwise noted.
14. Valves adjacent to tees shall be strapped to tees.
15. Block all fittings with concrete.
16. Buried line elevations on fire hydrants shall be set to the elevations shown on the drawings. All fire hydrants shall be strapped and buttressed with concrete in accordance with standard 50:1 ground. Fire hydrant to be compacted in accordance with Section 1003.1 100B of the Gen. Reg. for Water & Sewer.
17. All water house connections shall be for an inside meter setting.
18. The contractor shall not operate any water main valves on the existing system.
19. For all copper water house connections utilize flared type fittings only.
20. Profile station shall be adjusted as necessary to conform to Plan dimensions.
21. No pipe shall be laid until lines of excavation have been brought to subgrade.

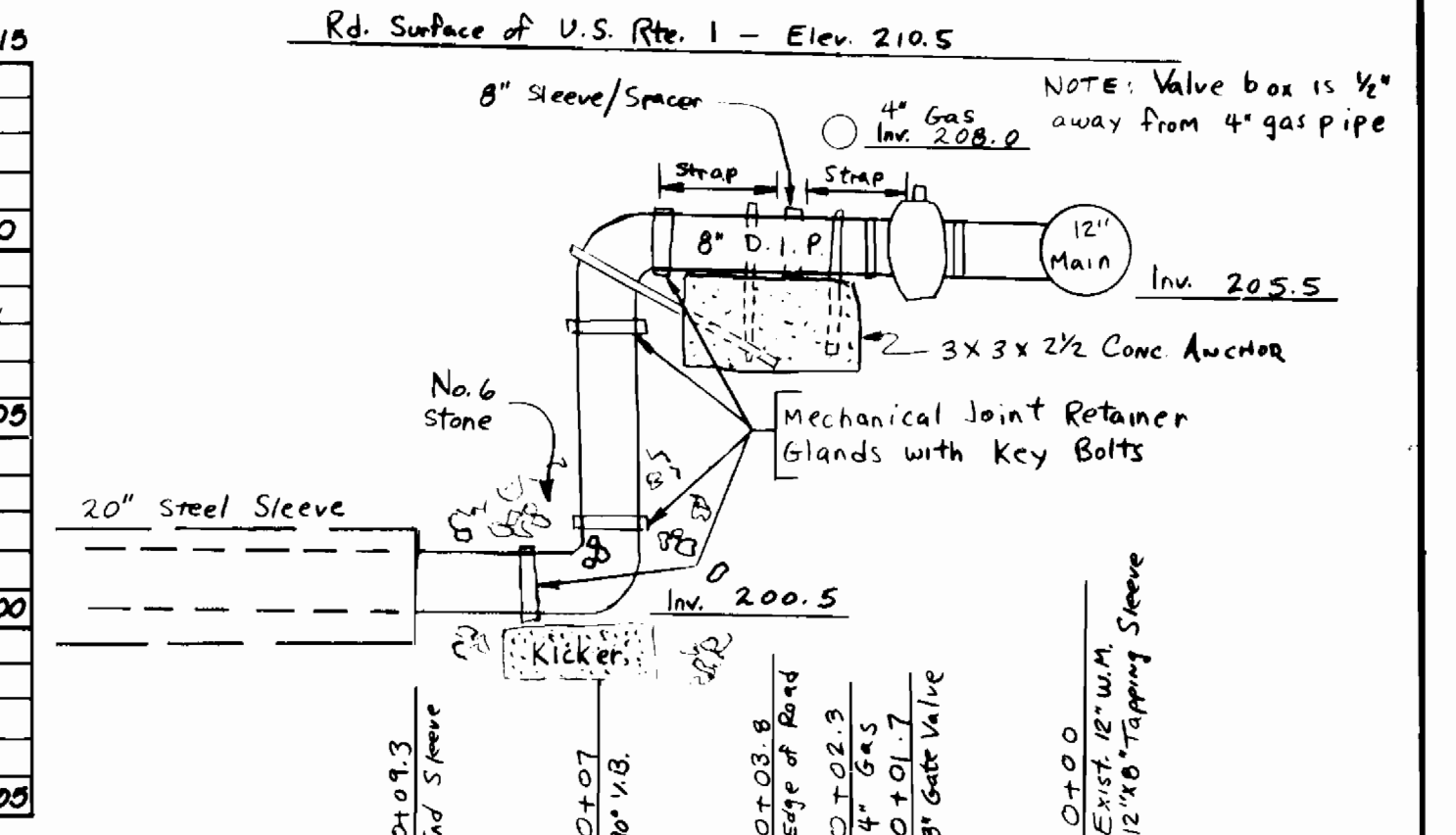
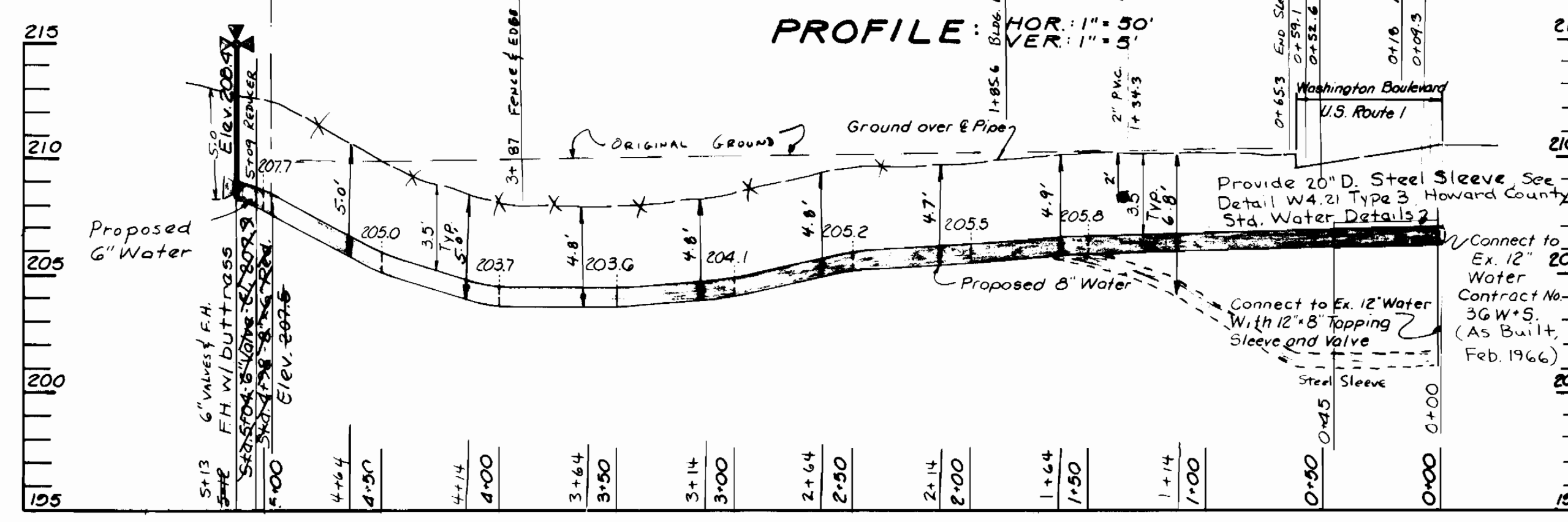


*2345004 Conc Mon Flush
Elev = 202.276 N48921.156 E 863873.016



*2345003 Conc Mon Flush
Elev = 211.207
N489921.232 E 8664528.500

PROFILE: HOR: 1"=30' VER: 1"=5'



SEDIMENT CONTROL MEASURES FOR THIS CONTRACT WILL BE IMPLEMENTED IN ACCORDANCE WITH ARTICLE 15 OF THE SPECIFICATION AND AS SHOWN ON SDP- 85-53C

HOWARD SOIL CONSERVATION DISTRICT: REVIEWED FOR HOWARD SOIL CONSERVATION DISTRICT AND MEETS TECHNICAL REQUIREMENTS.

U.S. SOIL CONSERVATION SERVICE DATE 5-20-85
THIS PLAN IS APPROVED FOR SOIL EROSION AND SEDIMENT CONTROL BY THE HOWARD SOIL CONSERVATION DISTRICT DATE 5-20-85
HOWARD SOIL CONSERVATION DISTRICT

QUANTITIES			
ITEM	ESTIMATE	AS-BUILT	MAI./SUPP
8" D.I.P. Water Pipe	498 L.F.	514 L.F.	D.I.P. / GRIFIN PIPE PRODUCTS
6" D.I.P. Water Pipe	14 L.F.	21 L.F.	" "
6" Fire Hydrant	1 Ea.	1 Ea.	M.S. / PLUMBING & CONN. / M.S.
6" Valve & Box	1 Ea.	3 Ea.	" "
Bore & Jack w/12" sleeve (Complete)	45 L.F.	56 L.F.	CHERRY STEEL CASTINGS / VALLEY STEEL PRODUCTS
12" Tapping Sleeve & Valve	1 Ea.	1 Ea.	D.I.P. / GRIFIN PIPE
8" x 6" Reducer	1 Ea.	1 Ea.	" "
8" Valve	1 Ea.	1 Ea.	" "
8" Sleeve & Spacer	1 Ea.	1 Ea.	" "

DEPARTMENT OF PUBLIC WORKS HOWARD COUNTY, MARYLAND Director of Public Works Date: 5-22-85	NOVASH & DOWGIALLO, P.A. PROFESSIONAL ENGINEERS & LAND SURVEYORS SEVERNA PARK BUSINESS CENTER 836 RITCHIE HIGHWAY SEVERNA PARK MARYLAND 21446 PHONE: (301)-647-9252 Date: 1-85	DES JPH DRN SAW CHK WVN DATE 1-85	PROPOSED ADDITION WATER LAYOUT SCALE 1"=30' MAP NO 43 BLOCK NO 4	FOR PROPOSED ADDITION TO LUSKINS WAREHOUSE AND MERCHANDISE DISTRIBUTION CENTER Contract No. 44-1330-D, SDP-85-90 HOWARD CO. MD. SHEET 1 OF 1
----------------------------------------------------------------------------------------------------	--------------------------------------------------------------------------------------------------------------------------------------------------------------------------------------------------	--------------------------------------------	----------------------------------------------------------------------------	--------------------------------------------------------------------------------------------------------------------------------------------------------------