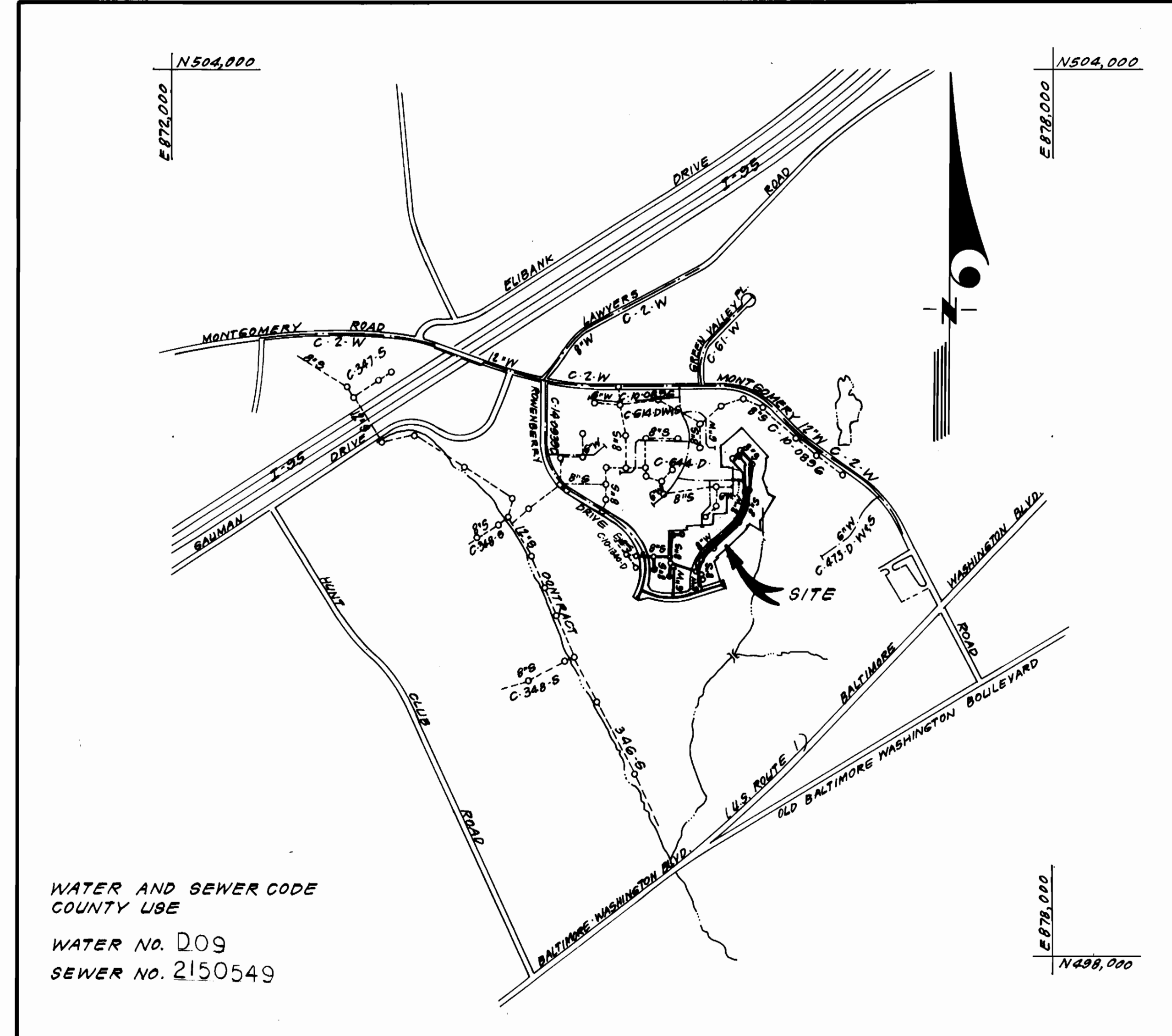
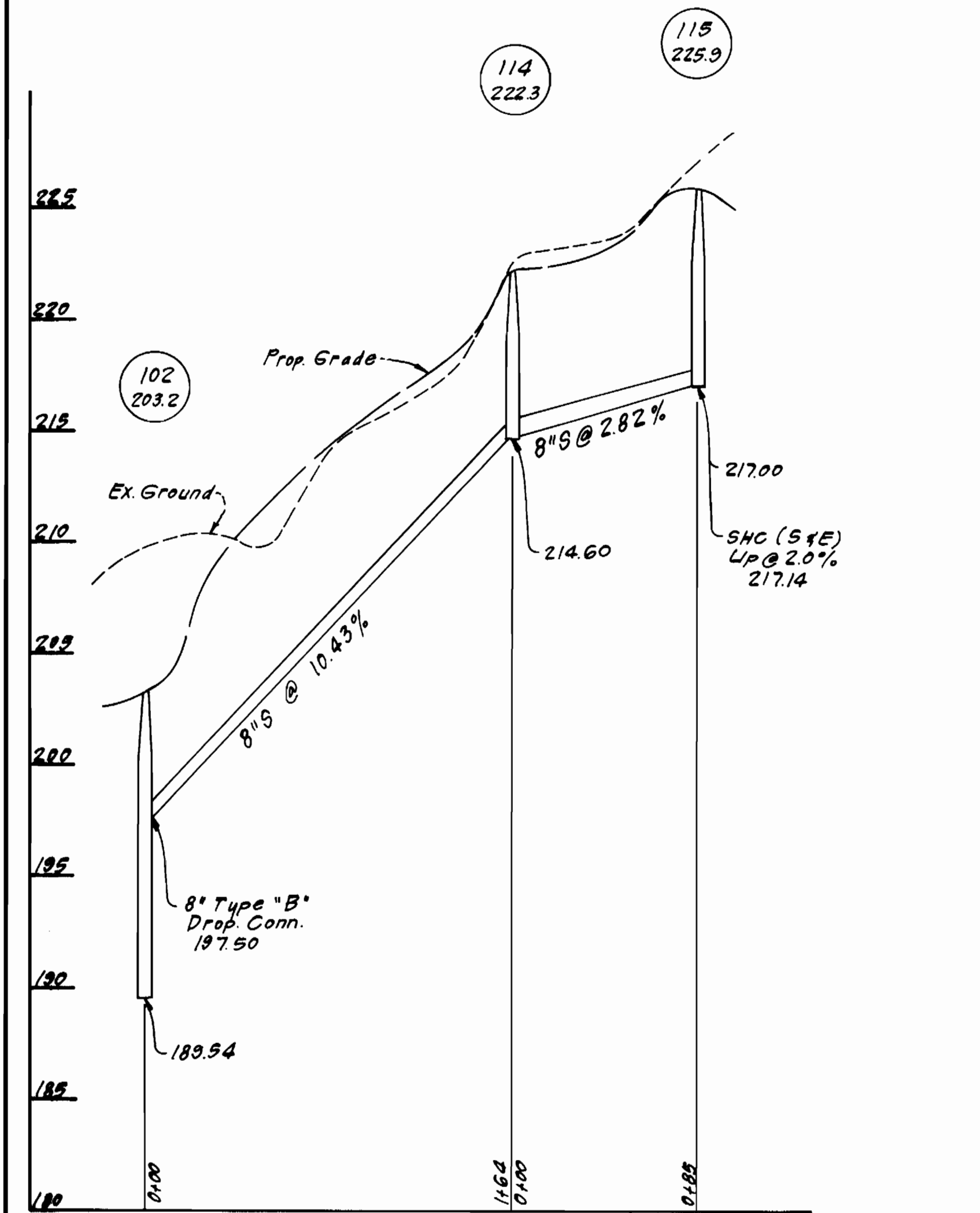


SHC ELEVATIONS					
LOT	INVERT @ R	Minimum Cellar	LOT	INVERT @ R	Minimum Cellar
1/2	192.86	196.0	27/28	221.64	224.7
3/4	192.34	195.4	29/30	222.83	225.9
5	191.88	195.0	31/32	223.96	227.1
6/7	202.99	206.1	33/34	225.13	228.2
8/9	205.99	209.1	35/36	228.97	232.1
10/11	200.10	212.2	37/38	231.82	234.9
12/13	213.72	216.8	39/40	233.96	237.1
14/15	216.74	219.8	41/42	234.41	237.5
16/17	217.64	220.7	43/44	234.92	238.0
18/19	218.48	221.6	45/46	235.76	238.9
20/21	219.37	222.5	47	235.22	238.3
22/23	220.05	223.2	48/49	235.41	238.5
24/25	220.52	223.6	50/51	235.78	238.9
26	220.84	223.9			

TYPE OF BUILDING	Townhouses & Condominiums
NO OF UNITS	51 Townhouses & 50 Condominiums
NO OF WHC'S	56
NO OF SHC'S	63
DRAINAGE AREA	Patapsco



WATER AND SEWER CODE
COUNTY USE
WATER NO. D09
SEWER NO. 2150549

VICINITY MAP
SCALE: 1" = 600'

GENERAL NOTES

- Approximate location of existing mains are shown. The contractor shall take all necessary precautions to protect existing mains and services and maintain uninterrupted supply. Any damage incurred shall be repaired immediately to the satisfaction of the Inspector, at the contractor's expense.
- All horizontal controls are based on Maryland State Coordinates.
- All vertical controls are based on U.S.G.S. Datum.
- All pipe elevations shown are invert elevations.
- Clear all utilities by a minimum of 6" clear all poles by 2'-0" minimum or tunnel as required. Any cost incurred to the contractor for tunneling or bracing at poles shall be included in unit prices bid for excavation and backfill.
- For details not shown on the drawings use Howard County Standard Details.
- For materials and construction methods use Howard County Standard Specifications & H.C. Design Manual, Volume II. The contractor shall have a copy of Volume II on the job.
- Contractor shall locate existing utilities a minimum of two (2) weeks in advance of construction operations in the vicinity of proposed utilities at his own expense.
- Contractor shall notify the following utilities or agencies at least five (5) working days before starting work shown on these plans.
State Highway Administration - 531-5533
Baltimore Gas & Electric Company - Contractor Services - 561-2585
Baltimore Gas & Electric Company - Underground Damage Control - 234-5621
Baltimore Gas & Electric Company - Trouble Shooting - 298-9013
"Miss Utility" - 1-559-0100
Chesapeake & Potomac (C & P) Telephone Company - 725-9976
Colonial Pipeline Company - 795-1390
Bureau of Utilities Howard County - 992-2366
- Trees are to be protected from damage to maximum extent. Trees located within the construction strip are not to be removed or damaged by the contractor.
- Contractor shall remove trees, stumps, and roots along line of excavation as directed by the Inspector. Payment for such removal shall be included in the unit price bid for excavation and backfill.
- Place regulation "Men Working" and warning signs as required to comply with Maryland State Highway Administration Manual of Traffic Control for Highway Construction and Maintenance Operations.
- All water mains to be D.I.P. unless otherwise noted.
- Top of all water mains to have a minimum of 3'-1/2' cover unless otherwise noted.
- Valves adjacent to tees shall be strapped to tees.
- Block all fittings with concrete.
- Bury line elevations on fire hydrants shall be set to the elevations shown on the drawings. All fire hydrants shall be strapped and buttressed with concrete in accordance with standard details. Soil around the fire hydrant to be compacted in accordance with Sections 1003 & 1008 of the Standard Specifications.
- Townhouse water house connections shall be for inside meter settings. Each condominium building shall have a 2" water house connection with an outside meter setting. Vault locations are shown thus: □
- The contractor shall not operate any water main valves on the existing system.
- All sewer mains shall be C.S.P.X., V.C.P.X., P.V.C., or A.C.P. Class 2400 unless otherwise noted.
- The contractor shall provide a joint in all sewer mains within 2'-0" of exterior manhole wall.
- All manholes shall be 4'-0" inside diameter, unless otherwise noted.
- Water main and water house connection lines must have a minimum of one foot separation from the sanitary sewer and sewer house connections as they cross. Except at crossings, water and sewer lines shall have a minimum horizontal separation of 10'.
- For all Copper Water House Connections, utilize flared type fittings only.
- Manhole thicknesses shown on profiles pertain to brick manholes only.

CONTRACT NO. 14-1332-D
ROCKBURN COMMONS
SECTION TWO
HOWARD COUNTY, MARYLAND
DEPARTMENT OF PUBLIC WORKS

QUANTITIES			
ITEM	EST. MD	AS-BUILT	MATERIAL / SUPPLIER
8" S	1986 L.F.	1981	MUNICIPAL & CONTRACTOR SALES
4" MH	17 EA.	17	ATLANTIC PRECAST CONC. CORP.
8" W	1736 L.F.	1738	GRIFFIN PIPE PRODUCTS
6" W	451 L.F.	528	" " "
F.H.	5 EA.	5	MUNICIPAL & CONTRACTOR SALES
8" V	4 EA.	4	" " "
6" (VERT. F.H.V.)	3 EA.	3	" " "
6" SHC	898 L.F.	868	" " "
2" WHC	175 L.F.	261	MUNICIPAL & CONTRACTOR SALES
1" WHC	442 L.F.	472	" " "
3/4" WHC	853 L.F.	875	" " "
2" Meter Vault	5 EA.	5	" " "

ROCKBURN COMMONS
SECTION TWO
LOTS 1-53 & PARCELS "A" - "E"

Sediment Control Measures will be implemented in accordance with Article No. 15 of the Specifications & with Road Construction Plan E.85-112 ; Drawings 7 & 8, Sediment & Erosion Control.

REVIEWED FOR HOWARD SOIL CONSERVATION DISTRICT AND MEETS TECHNICAL REQUIREMENT.
Signature: *Stephen C. Hecker* DATE: 1/3/86

US. SOIL CONSERVATION SERVICE
This Development Plan is approved for Soil Erosion and Sediment Control by the Howard Soil Conservation District.

APPROVED:
Signature: *Stephen C. Hecker* DATE: 1/3/86
Howard S.C.D.

DEPARTMENT OF PUBLIC WORKS
HOWARD COUNTY, MARYLAND

Steve F. Neumeier 1-8-86
DIRECTOR OF PUBLIC WORKS DATE

William B. Ryan 1-7-86
CHIEF, BUREAU OF ENGINEERING DATE

William B. Ryan 1-6-86
CHIEF, BUREAU OF UTILITIES DATE

William B. Ryan 1-7-86
CHIEF, LAND DEVELOPMENT DIV. DATE

CLARK, FINEFROCK & SACKETT
ENGINEERS - PLANNERS - SURVEYORS

11315 LOCKWOOD DRIVE SILVER SPRING, MARYLAND 20904
(301) 593-3400



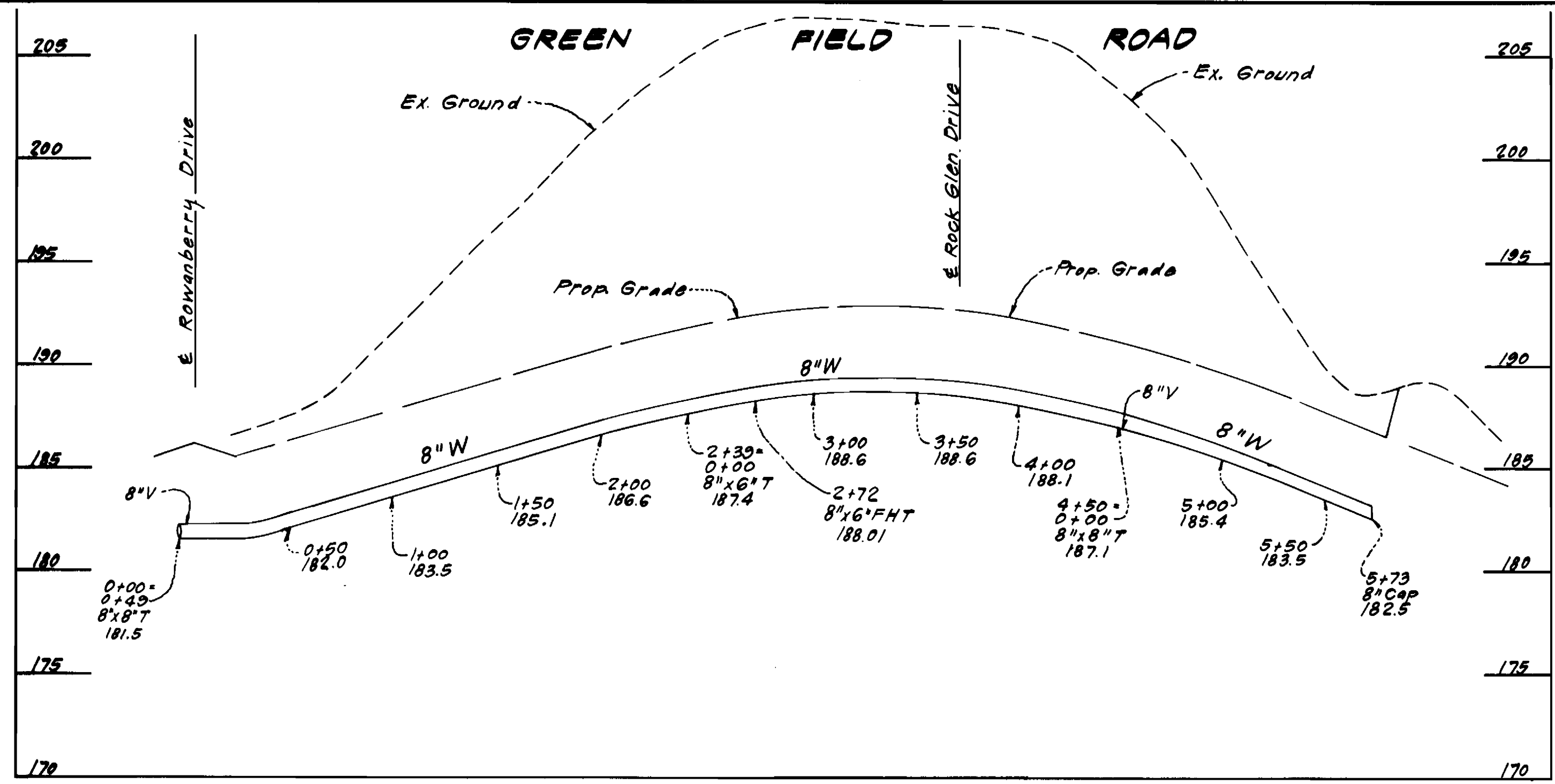
DES: C.K.G.	
DRN: V.L.B.	
CHK: C.K.G.	
DATE: 8/85	
BY NO.	
REVISION	
DATE	

VICINITY MAP & PROFILES OF
WATER & SEWER MAINS

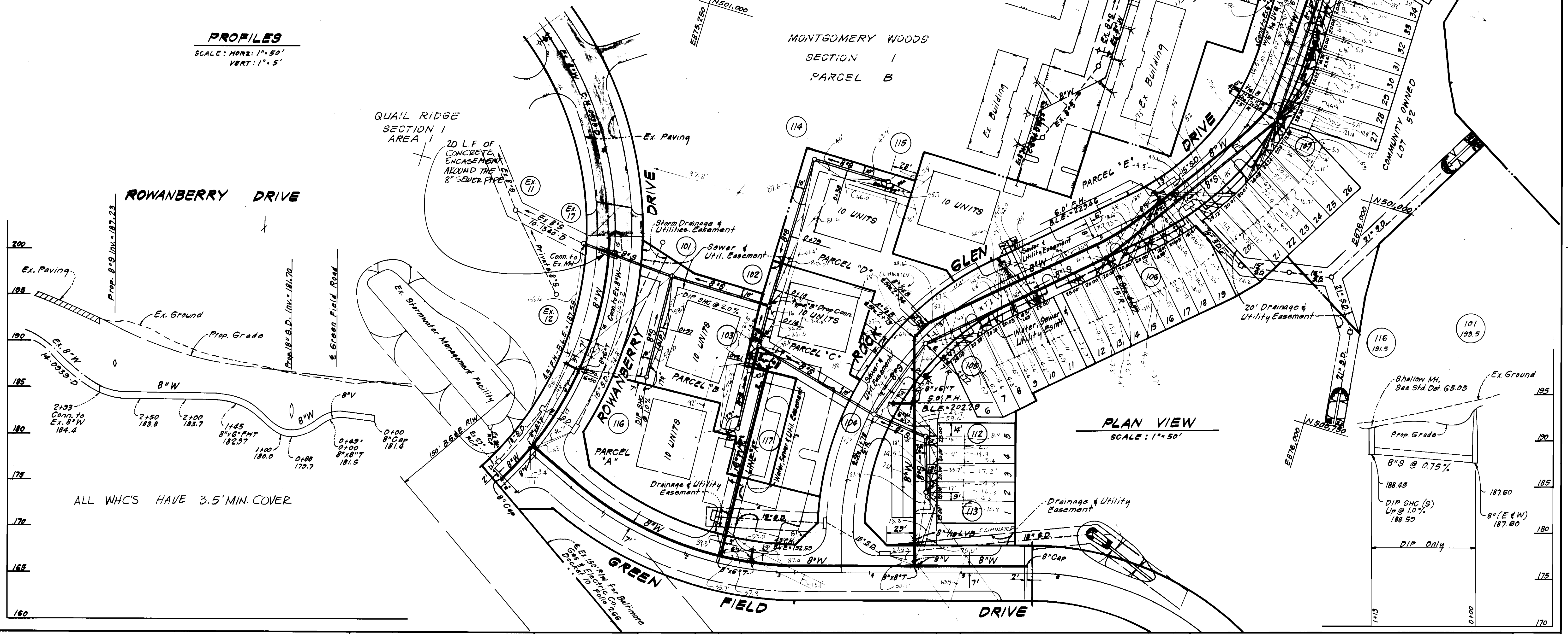
600' SCALE MAP NO. 38 BLOCK NO.

ROCKBURN COMMONS
SECTION TWO
1ST ELECTION DISTRICT
CONTRACT NO. 14-1332-D

SCALE AS SHOWN
SHEET 1 OF 3



PROFILES
SCALE: HORIZ: 1" = 50'
VERT: 1" = 5'



PLAN VIEW
SCALE: 1" = 50'

DEPARTMENT OF PUBLIC WORKS
HOWARD COUNTY, MARYLAND

W. F. Neuman
DIRECTOR OF PUBLIC WORKS
DATE 1-8-86

Michael J. H...
CHIEF, BUREAU OF ENGINEERING
DATE 1-7-86

...
CHIEF, BUREAU OF UTILITIES
DATE 1-6-86

Michael J. H...
CHIEF, LAND DEVELOPMENT DIV.
DATE 1-7-86

CFE CLARK · FINEFROCK & SACKETT
ENGINEERS · PLANNERS · SURVEYORS
11315 LOCKWOOD DRIVE SILVER SPRING, MARYLAND 20904
(301) 593-3400



DES: C. K. G.			
DRN: V. L. B.			
CHK: C. K. G.			
DATE: 8/85	BY NO.	REVISION	DATE

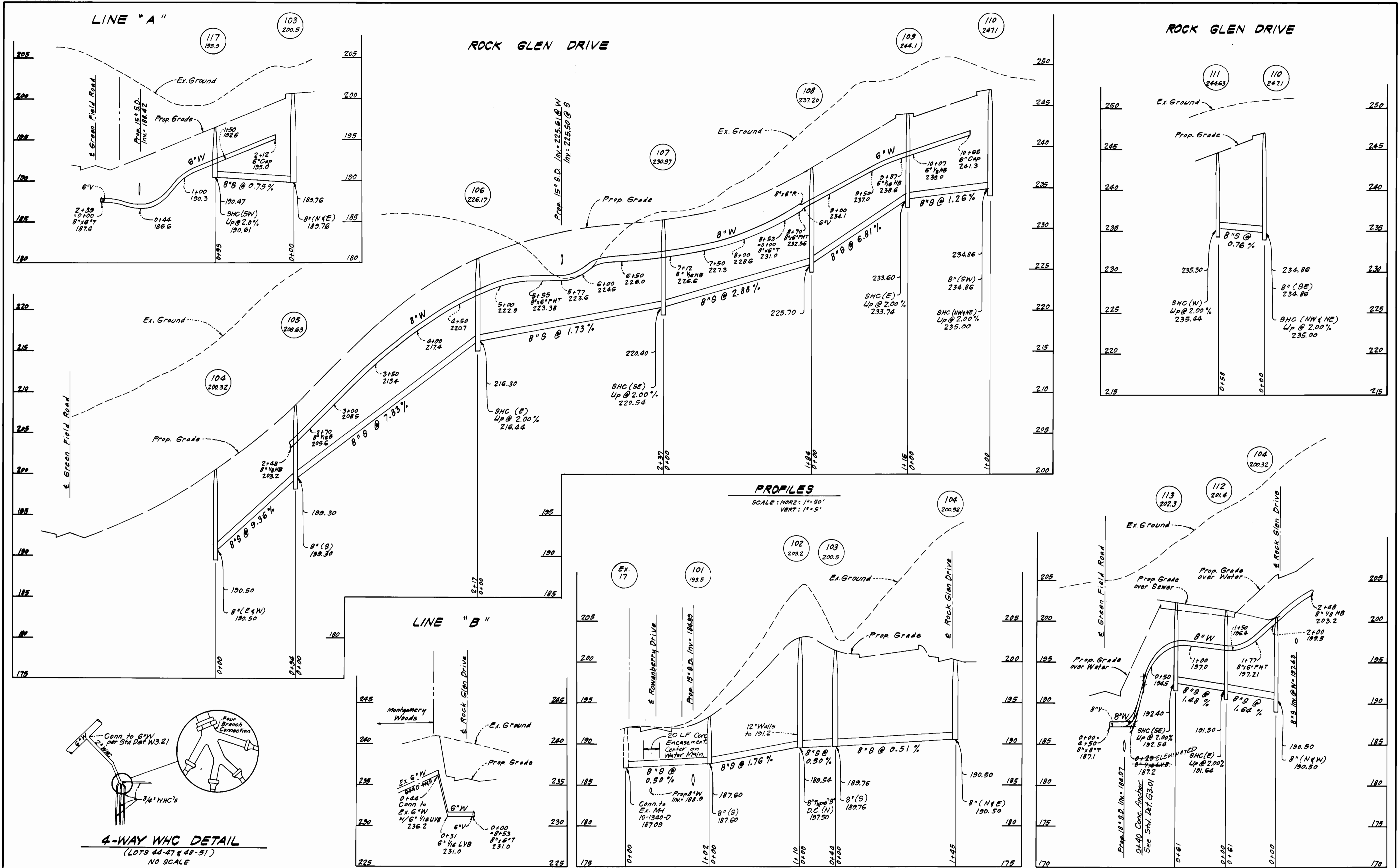
PLAN & PROFILES OF
WATER & SEWER MAINS

600' SCALE MAP NO. 32 BLOCK NO.

ROCKBURN COMMONS
SECTION TWO
ELECTION DISTRICT
CONTRACT NO. 14-1332-D

SCALE
AS SHOWN
SHEET
2 OF 3

12/04/86 AM



DEPARTMENT OF PUBLIC WORKS
HOWARD COUNTY, MARYLAND

Way F. Numan
DIRECTOR OF PUBLIC WORKS
DATE: 1-8-86

Michael P. ...
CHIEF, BUREAU OF ENGINEERING
DATE: 1-7-86

...
CHIEF, BUREAU OF UTILITIES
DATE: 1-6-86

CLARK - FINEFROCK & SACKETT
ENGINEERS - PLANNERS - SURVEYORS

11315 LOCKWOOD DRIVE SILVER SPRING, MARYLAND 20904
(301) 593-3400



DES: C.K.G.	CKB	1	Added Conc. Anchor near MH 113/Encasement near 101.101	2/24/86
DRN: V.L.B.				
CHK: C.K.G.				
DATE: 8/85	BY	NO.	REVISION	DATE

PROFILES OF
WATER & SEWER MAINS

600' SCALE MAP NO. 32 BLOCK NO.

ROCKBURN COMMONS
SECTION TWO
1ST ELECTION DISTRICT
CONTRACT NO. 14-133 2-D

SCALE
AS SHOWN

SHEET
3 OF 3

12/28/86 AM