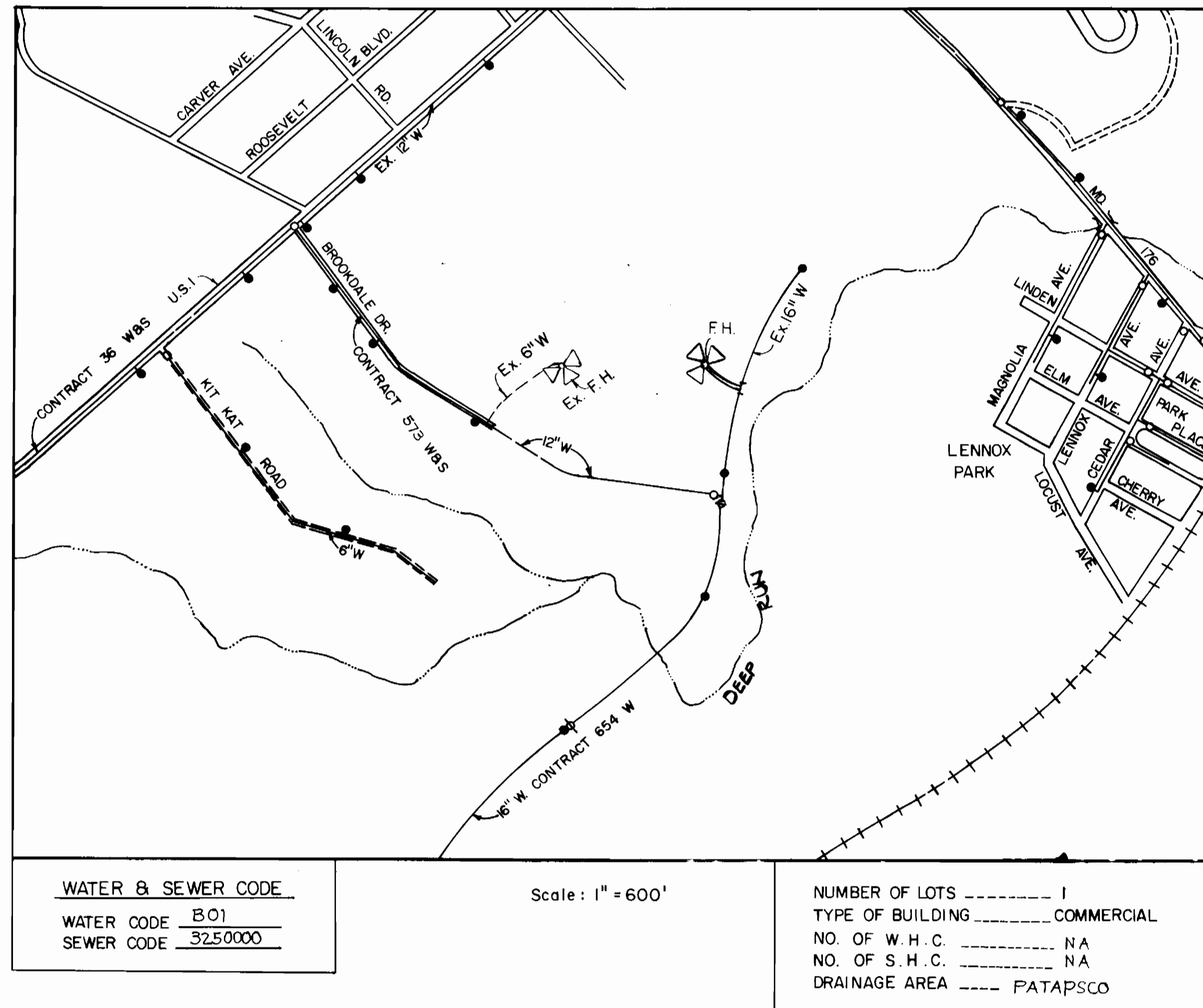


QUANTITIES			
ITEM	ESTIMATED	AS BUILT	MATERIAL/SUP
6" WATER MAIN	228 LF	234'	Plastic Water Coat Iron Pipe
FIRE HYDRANT	1 unit	1 unit	U.S. Pipe
6" VALVE	1 unit	1 unit	U.S. Pipe
16"x6" Tapping Sleeve	1 unit	1 unit	U.S. Pipe

GENERAL NOTES

- Approximate location of existing mains are shown. The contractor shall take all necessary precautions to protect existing mains and services and maintain uninterrupted supply. Any damage incurred shall be repaired immediately to the satisfaction of the Engineer at the Contractor's expense.
- All horizontal controls are based on Maryland State Coordinates.
- All vertical controls are based on U.S.G.S. data.
- All pipe elevations shown are invert elevations.
- Clear all utilities by a minimum of 6". Clear all poles by 2'-0" minimum or tunnel as required. The owner has contacted the utilities companies and has made arrangements for bracing of poles as shown on the drawings. In the event the contractor's work requires the bracing of additional poles, any cost incurred by the owner for the bracing of additional poles or damages shall be deducted from money owed the contractor. The contractor shall coordinate with the utility companies to schedule the bracing of the poles.
- For details not shown on the drawings, and for materials and construction methods, use Howard County Design Manual, Volume IV, Standard Specifications and Details for Construction. The contractor shall have a copy of Volume IV on the job.
- Where test pits have been made on existing utilities, they are noted by the symbol at the location of the test pit. A note or notes containing the results of the test pit or pits is included on the drawings. Existing utilities in the vicinity of the proposed work for which test pits have not been dug shall be located by the contractor two weeks in advance of construction operations at his own expense.
- Contractor shall notify the following utilities or agencies at least five working days before starting work shown on these plans:
 - State Highway Administration - 531-5533
 - Baltimore Gas & Electric Co. - Contractor Services 561-2585
 - Baltimore Gas & Electric Co. Underground Damage Control 234-5621
 - Baltimore Gas & Electric Co. Trouble Shooting 298-9013
 - Miss Utility - 1-559-0100
 - Colonial Pipeline Co. - 795-1390
 - Bureau of Utilities, Howard County Dept. of Public Works - 992-2366
- Trees and shrubs are to be protected from damage to maximum extent. Trees and shrubs located within the construction strip are not to be removed or damaged by the contractor.
- Contractor shall remove trees, stumps, and roots along line of excavation. Payment for such removal shall be included in the unit price bid for construction of the main.
- All water mains to be D.I.P. unless otherwise noted.
- Tops of all water mains to have a minimum of 3 1/2' cover unless otherwise noted.
- Valves adjacent to trees shall be strapped to trees.
- All fittings shall be buttressed or anchored with concrete in accordance with the Standard Details unless otherwise provided for on the drawings.
- Fire hydrants shall be set to the bury line elevations shown on the drawings. All fire hydrants shall be strapped and buttressed with concrete in accordance with Standard Details. Soil around the fire hydrant shall be compacted in accordance with Section 1003 the Standard Specifications.
- The contractor shall not operate any water main valves on the existing water system.



WATER & SEWER CODE	
WATER CODE	801
SEWER CODE	3250000

Scale: 1" = 600'

NUMBER OF LOTS	-----	1
TYPE OF BUILDING	-----	COMMERCIAL
NO. OF W.H.C.	-----	NA
NO. OF S.H.C.	-----	NA
DRAINAGE AREA	-----	PATAPSCO

Sediment Control Measures will be implemented in accordance with Article No. 15 of the Specifications as shown on these drawings.

REVIEWED FOR HOWARD SOIL CONSERVATION DISTRICT AND MEETS TECHNICAL REQUIREMENT
Janet M. Williams 1/22/85
 SIGNATURE DATE
 US SOIL CONSERVATION SERVICE

This Development Plan is approved for Soil Erosion and Sediment Control by the Howard Soil Conservation District.
 APPROVED
Stephen L. Hader 1/24/85
 HOWARD S.C.D. DATE

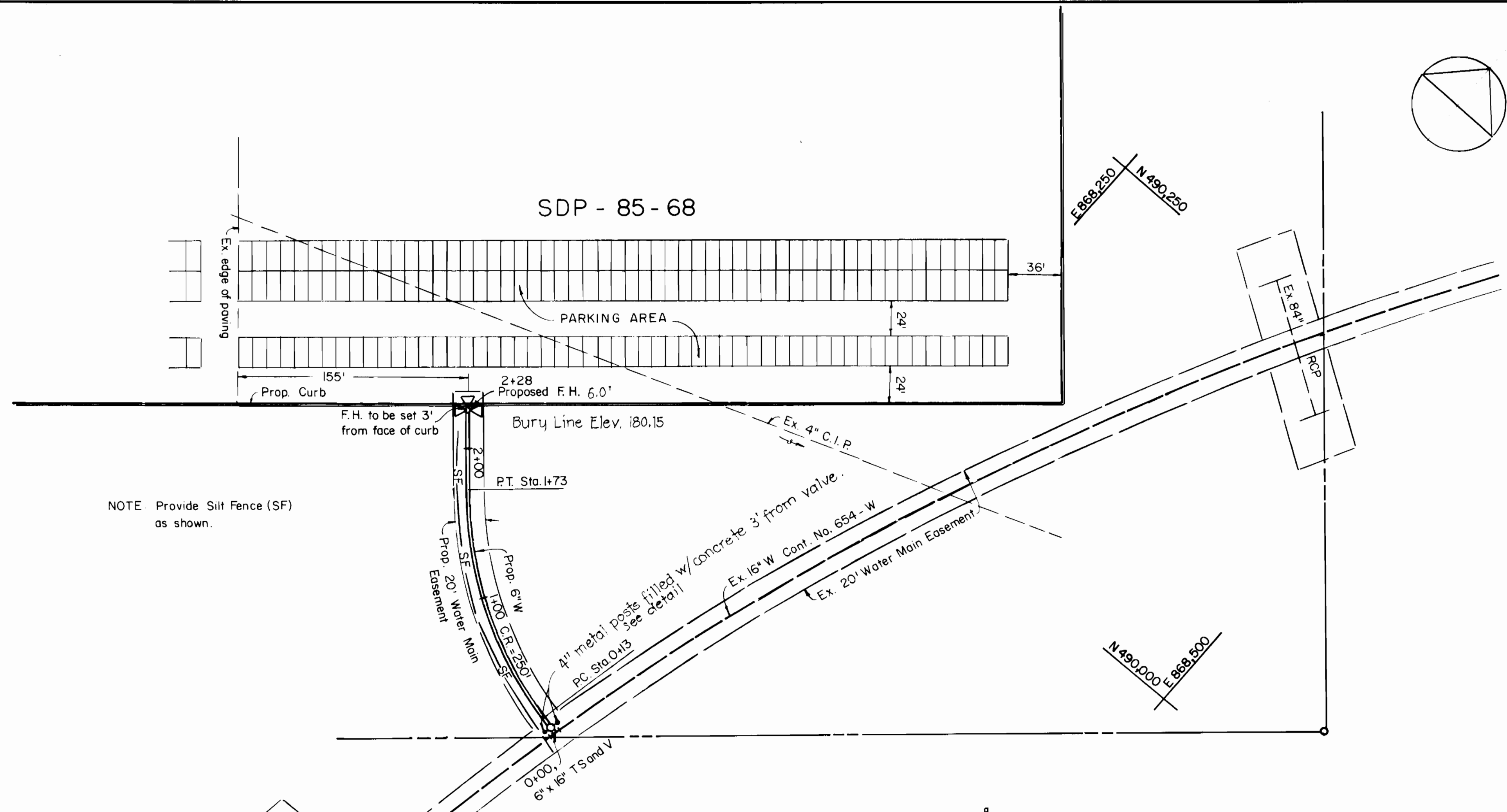
DEPARTMENT OF PUBLIC WORKS HOWARD COUNTY, MARYLAND <i>John F. Nally</i> 1-23-85 DIRECTOR PUBLIC WORKS DATE <i>William J. Hader</i> 1-23-85 CHIEF, BUREAU OF UTILITIES DATE		PURDUM & JESCHKE ENGINEERS 1029 N. CALVERT ST. BALTIMORE, MARYLAND <i>William J. Hader</i> 1-22-85 CHIEF, LAND DEVELOPMENT DIV. DATE	
---	--	---	--

DES. A.R.T.					
DRN. M.P.E.					
CHK. W.G.R.					
DATE	BY	NO.	REVISION	DATE	600'S SCALE MAP NO. 43 BLOCK NO.

WATER MAIN EXTENSION
 LOCATION MAP

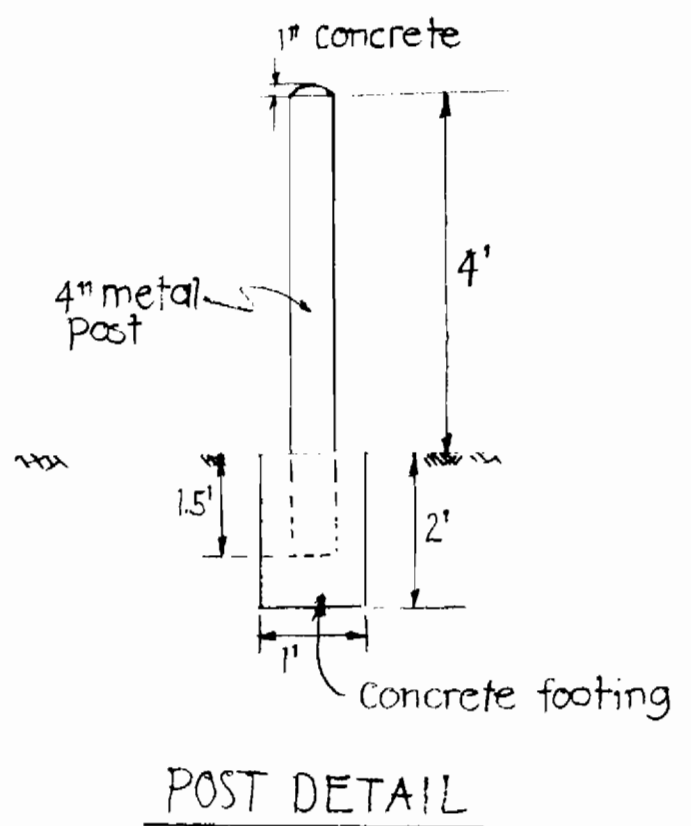
ANGLO AMERICAN ACQUISITION
 OF MARYLAND, INC.
 FIRST ELECTION DISTRICT HOWARD COUNTY, MARYLAND
 CONTRACT NO. 44-1328-D

SCALE
 SHEET
 1 OF 2

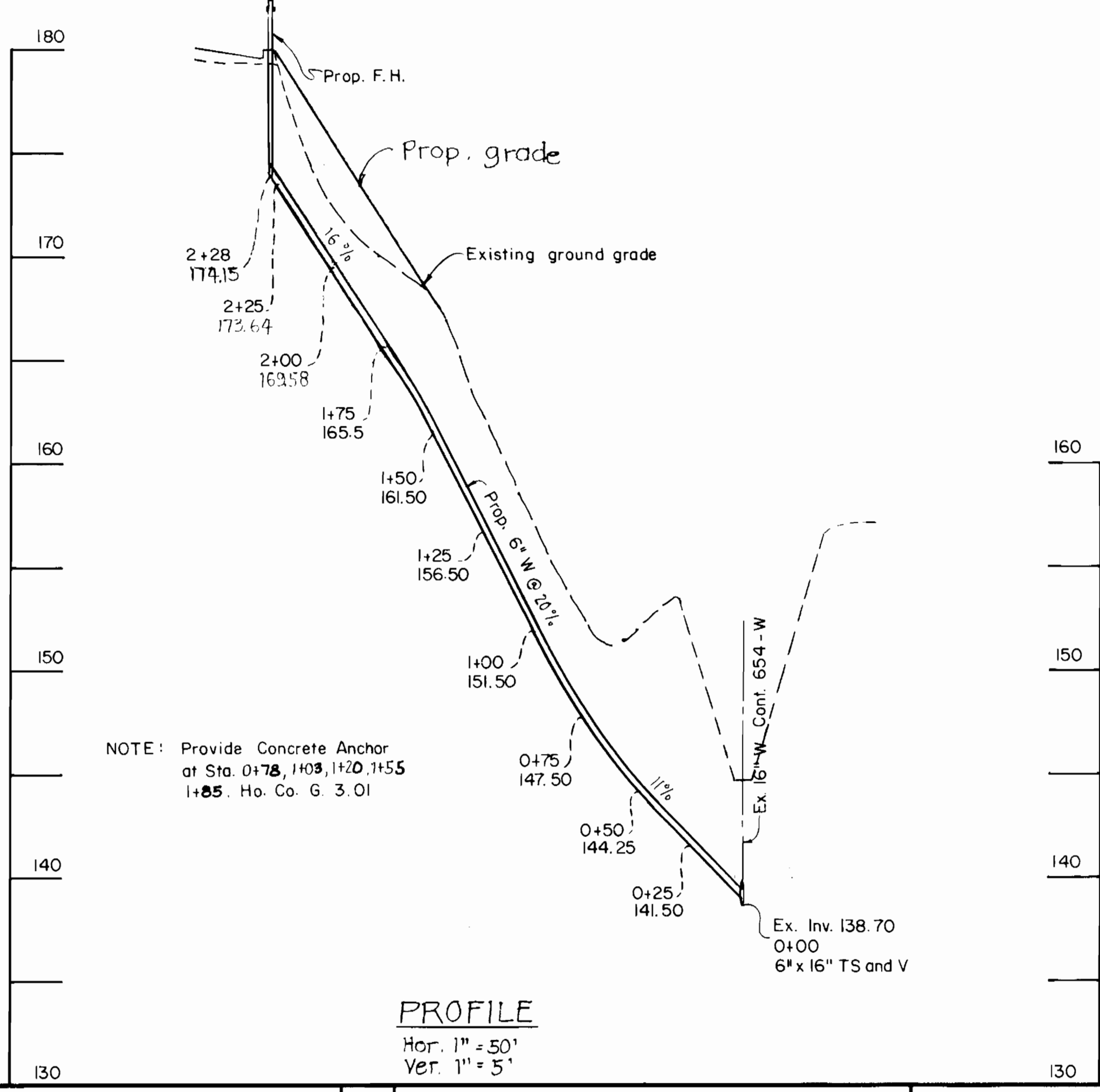


NOTE: Provide Silt Fence (SF) as shown.

PLAN
1" = 50'



POST DETAIL



NOTE: Provide Concrete Anchor at Sta. 0+75, 1+03, 1+20, 1+55 1+85. Ho. Co. G. 3.01

PROFILE
Hor. 1" = 50'
Ver. 1" = 5'

Sediment Control Measures will be implemented in accordance with Article No. 15 of the Specifications & as shown.

REVIEWED FOR HOWARD SOIL CONSERVATION DISTRICT AND MEETS TECHNICAL REQUIREMENT.
James M. Healy 1/22/85
 SIGNATURE DATE
 US SOIL CONSERVATION SERVICE
 This Development Plan is approved for Soil Erosion and Sediment Control by the Howard Soil Conservation District.
 APPROVED:
Howard S.C.D. 1/22/85
 HOWARD S.C.D. DATE

BRUSHING AND 1/22/85

DEPARTMENT OF PUBLIC WORKS
 HOWARD COUNTY, MARYLAND
William C. Nease 1-23-85
 DIRECTOR OF PUBLIC WORKS DATE
William C. Nease 1-22-85
 CHIEF, BUREAU OF UTILITIES DATE
William C. Nease 1-22-85
 CHIEF, LAND DEVELOPMENT DIV. DATE

PURDUM & JESCHKE
 ENGINEERS
 1029 N. CALVERT ST.
 BALTIMORE, MARYLAND
William C. Nease



DES:				
DRN:				
CHK:				
DATE:	BY	NO.	REVISION	DATE

WATER MAIN EXTENSION
 PLAN AND PROFILE
 60' SCALE MAP NO. 45 BLOCK NO.

ANGLO AMERICAN ACQUISITION
 OF MARYLAND, INC.
 FIRST ELECTION DISTRICT
 HOWARD CO., MARYLAND
 CONTRACT NO. 44-1328-D

SCALE
 SHEET 2 OF 2