

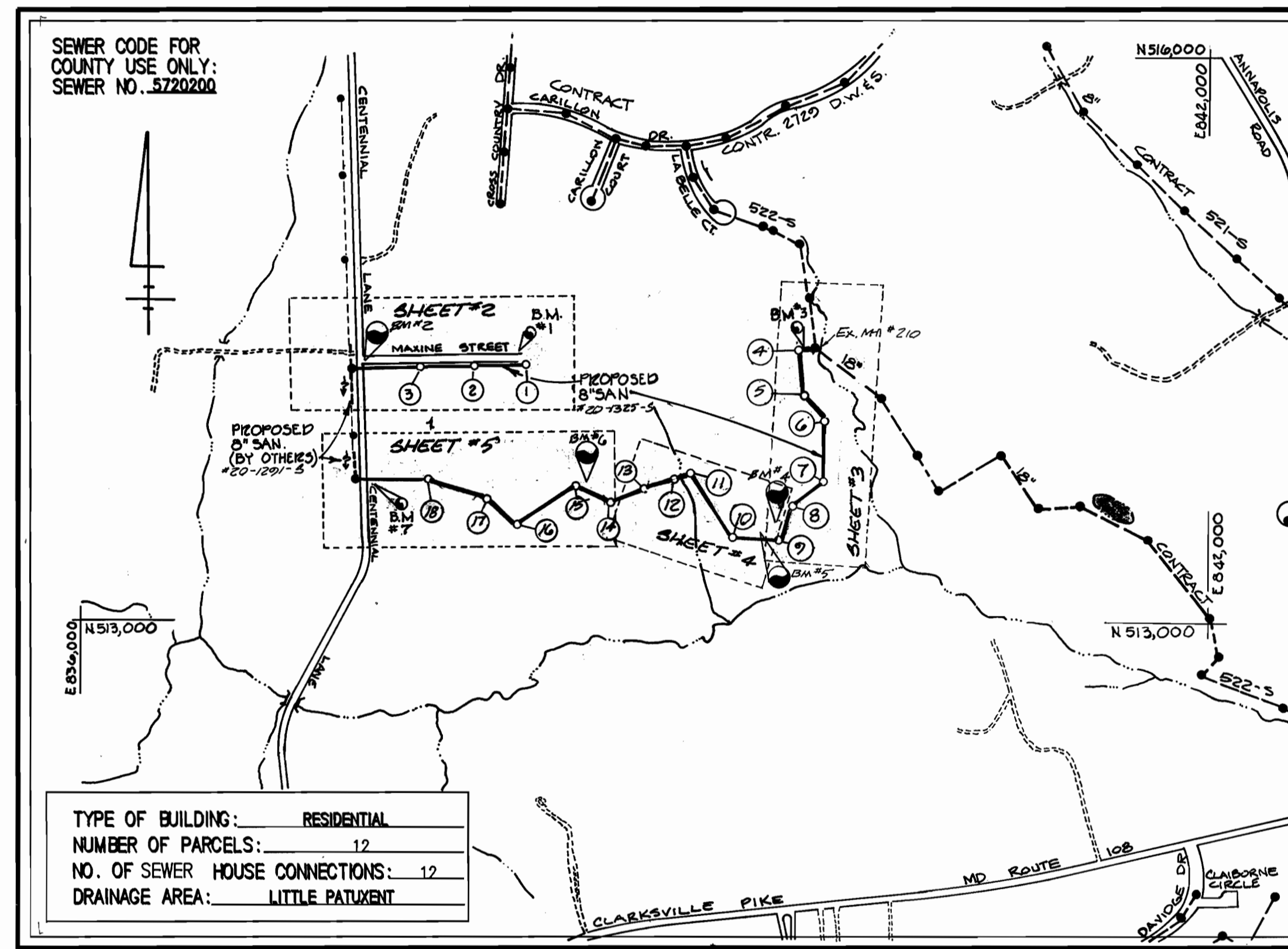
CENTENNIAL PARK SEWER CAPITAL PROJECT NO. S-6050 CONTRACT NO. 20-1325

GENERAL NOTES

1. APPROXIMATE LOCATION OF EXISTING MAINS ARE SHOWN. THE CONTRACTOR SHALL TAKE ALL NECESSARY PRECAUTIONS TO PROTECT EXISTING MAINS AND SERVICES AND MAINTAIN UNINTERRUPTED SUPPLY. ANY DAMAGE INCURRED SHALL BE REPAIRED IMMEDIATELY TO THE SATISFACTION OF THE ENGINEER, AT THE CONTRACTOR'S EXPENSE.
2. ALL HORIZONTAL CONTROLS ARE BASED ON MARYLAND STATE COORDINATES.
3. ALL VERTICAL CONTROLS ARE BASED ON U.S.G.S. DATUM.
4. ALL PIPE ELEVATIONS SHOWN ARE INVERT ELEVATIONS.
5. CLEAR ALL UTILITIES BY A MINIMUM OF 6".
6. FOR DETAILS NOT SHOWN ON THE DRAWINGS, AND FOR MATERIALS AND CONSTRUCTION METHODS, USE HOWARD COUNTY DESIGN MANUAL, VOLUME IV, STANDARD SPECIFICATION AND DETAILS FOR CONSTRUCTION. THE CONTRACTOR SHALL HAVE A COPY OF VOLUME IV ON THE JOB.
7. WHERE TEST PITS HAVE BEEN MADE ON EXISTING UTILITIES, THEY ARE NOTED BY THE SYMBOL AT THE LOCATION OF THE TEST PIT. A NOTE OR NOTES CONTAINING THE RESULTS OF THE TEST PIT OR PITS IS INCLUDED ON THE DRAWINGS. EXISTING UTILITIES IN THE VICINITY OF THE PROPOSED WORK FOR WHICH TEST PITS HAVE NOT BEEN DUG SHALL BE VERIFIED BY THE CONTRACTOR TO HIS OWN SATISFACTION. ANY DAMAGE TO EXISTING FACILITIES DUE TO THE CONTRACTOR'S NEGLIGENCE SHALL BE REPAIRED AT THE CONTRACTOR'S EXPENSE.
8. CONTRACTOR SHALL NOTIFY THE FOLLOWING UTILITIES OR AGENCIES AT LEAST FIVE (5) WORKING DAYS BEFORE STARTING WORK SHOWN ON THESE PLANS:
STATE HIGHWAY ADMINISTRATION - 531-5533
BALTIMORE GAS & ELECTRIC COMPANY - CONTRACTOR SERVICES - 850-4620
BALTIMORE GAS & ELEC. CO. - UNDERGROUND DAMAGE CONTROL- 859-9004
BALTIMORE GAS & ELEC. CO. - TROUBLE SHOOTING - 298-9001
"MISS UTILITY" - 1-559-0100
COLONIAL PIPELINE COMPANY - 795-1390
BUREAU OF UTILITIES HOWARD CO. DEPT. OF PUBLIC WORKS - 992-2366
9. TREES AND SHRUBS ARE TO BE PROTECTED FROM DAMAGE TO MAXIMUM EXTENT. TREES AND SHRUBS LOCATED WITHIN THE CONSTRUCTION STRIP ARE NOT TO BE REMOVED OR DAMAGED BY THE CONTRACTOR.
10. CONTRACTOR SHALL REMOVE TREES, STUMPS AND ROOTS ALONG LINE OF EXCAVATION. PAYMENT FOR SUCH REMOVAL SHALL BE INCLUDED IN THE UNIT PRICE BID FOR CONSTRUCTION OF THE MAIN.
11. ALL SEWER MAINS SHALL BE C.S.P.X., R.C.S.P., V.C.P.X., A.C.P. CLASS 2400 OR P.V.C. UNLESS OTHERWISE NOTED.
12. THE CONTRACTOR SHALL PROVIDE A JOINT IN ALL SEWER MAINS WITHIN 2'-0" OF EXTERIOR MANHOLE WALL.
13. ALL MANHOLES SHALL BE 4'-0" INSIDE DIAMETER, UNLESS OTHERWISE NOTED.
14. MANHOLES SHOWN WITH 12" AND 16" WALLS ARE BRICK MANHOLES ONLY.
15. MANHOLES DESIGNATED W.T. IN PLAN AND PROFILE SHALL HAVE WATERTIGHT FRAME AND COVERS, STANDARD DETAIL G5.52. WHERE WATERTIGHT MANHOLE FRAME AND COVER IS USED, SET TOP OF FRAME 1'-6" ABOVE FINISHED GRADE UNLESS OTHERWISE NOTED ON THE DRAWINGS.
16. HOUSE(S) WITH THE SYMBOL "C.N.S." INDICATE THAT CELLAR CANNOT BE SERVED.

SOIL EROSION AND SEDIMENT CONTROL NOTES

1. THE CONTRACTOR WILL COMPLY WITH ALL REQUIREMENTS OF SEDIMENT AND EROSION CONTROL SET FORTH IN THE CONTRACT DRAWINGS, THE USDA SOIL CONSERVATION SERVICE MANUAL, "STANDARDS AND SPECIFICATIONS FOR SOIL EROSION AND SEDIMENT CONTROL IN DEVELOPING AREAS", AND VOLUME IV - ARTICLE 15 OF THE HOWARD COUNTY DESIGN MANUAL, VOLUME IV.
2. THE CONTRACTOR SHALL NOT PUMP FROM EXCAVATED AREAS DIRECTLY INTO THE HOWARD COUNTY STORM DRAINAGE SYSTEM OR ANY NATURAL WATER COURSE, WHERE GROUND WATER IS ENCOUNTERED DURING CONSTRUCTION, THE CONTRACTOR SHALL PROVIDE PORTABLE OR EXCAVATED SEDIMENT TRAPS TO PREVENT SILTED TRENCH WATER FROM ENTERING STORM DRAINAGE SYSTEMS OR NATURAL WATERWAYS.
3. ALL EXCAVATED MATERIAL SHALL BE PLACED ON THE HIGH SIDE OF THE TRENCH WATER WHENEVER POSSIBLE, AND CONFINED TO AN AREA WHERE IT WILL NOT OBSTRUCT THE NORMAL FLOW OR DRAINAGE COURSES.
4. ALL SWALES SHALL BE EQUIPPED WITH A SEDIMENT RETENTION DEVICE TO TRAP SEDIMENT AND FILTER WATER LEAVING THE RIGHT-OF-WAY PRIOR TO ENTERING ANY RUNNING STREAMS.
5. THE CONTRACTOR SHALL PROVIDE STRAW BALE DIKES NORMAL TO SURFACE WATER FLOW AND AROUND ALL VEHICLE AND EQUIPMENT STAGING AREAS AS SHOWN IN "DETAIL OF A STRAW BALE DIKE" ENCLOSED IN SPECIFICATIONS.
6. ROADSIDE DITCHES AND DRAINAGE PIPES SHALL BE RESTORED TO A CONDITION EQUAL TO OR BETTER THAN THE ORIGINAL CONDITION FOLLOWING COMPLETION OF CONSTRUCTION.
7. THE CONTRACTOR SHALL DISPOSE OF SPOILS IN ACCORDANCE WITH GOOD SOIL CONSERVATION PRACTICE AND IN SUCH A MANNER THAT NONE CAN BE CARRIED INTO ANY DRAINAGE FACILITY OR WATER COURSE. THE CONTRACTOR SHALL BE RESPONSIBLE FOR DISPOSING OF ALL SPOIL OR EXCESS EXCAVATED MATERIAL ON A SITE APPROVED BY THE SOIL CONSERVATION DISTRICT. DOCUMENTATION OF APPROVAL AND SITE SHALL BE PROVIDED TO THE ENGINEER PRIOR TO BEGINNING WORK.
8. THE HOWARD COUNTY SOIL CONSERVATION DISTRICT MUST BE NOTIFIED IN WRITING BY THE CONTRACTOR AS TO WHERE EXCESS MATERIAL WILL BE DISPOSED OR BORROW MATERIAL WILL BE OBTAINED. PRIOR TO BEGINNING ANY WORK ON THIS PROJECT, COPIES SHALL BE PROVIDED TO THE ENGINEER.
9. CONTINUOUS INSPECTION AND MAINTENANCE OF ALL SEDIMENT AND EROSION CONTROL DEVICES WILL BE REQUIRED.
10. THE CONTRACTOR SHALL PROVIDE ADDITIONAL SOIL EROSION AND SEDIMENT CONTROL AS REQUIRED BY THE SEDIMENT CONTROL INSPECTOR, AS THE WORK PROGRESSES OR REQUIRES.
11. THE CONTRACTOR SHALL NOTIFY IN WRITING, A HOWARD COUNTY SEDIMENT CONTROL DIVISION REPRESENTATIVE AT LEAST THREE (3) DAYS PRIOR TO STARTING WORK. PLEASE CONTACT: HOWARD COUNTY - 992-2436. COPIES SHALL BE PROVIDED TO THE ENGINEER.
12. THE CONTRACTOR SHALL PLACE A STABILIZED CONSTRUCTION ENTRANCE AS SHOWN IN THE HOWARD COUNTY STANDARD DETAILS, G6.11, WHERE SHOWN ON THE PLANS UNLESS OTHERWISE DIRECTED BY THE ENGINEER.
13. SEDIMENT REMOVAL - ALL TRAPPED SEDIMENT IS TO BE REMOVED AND DISPOSED OF AT THE AUTHORIZED LANDFILLS PRIOR TO THE REMOVAL OF SEDIMENT CONTROL STRUCTURES.
14. FOLLOWING INITIAL SOIL DISTURBANCE AND REDISTURBANCE, PERMANENT OR TEMPORARY STABILIZATION SHALL BE COMPLETED WITHIN:
A.) SEVEN (7) CALENDAR DAYS FOR ALL PERIMETER SEDIMENT CONTROL STRUCTURES, DIKES, SWALES, DITCHES, PERIMETER SLOPES AND ALL SLOPES GREATER THAN 3:1.
B.) FOURTEEN (14) DAYS AS TO ALL OTHER DISTURBED OR GRADED AREAS ON THE PROJECT SITE.



SECOND ELECTION DISTRICT HOWARD COUNTY MARYLAND

ITEM	QUANTITIES		TYPE MATERIAL	SUPPLIERS
	ESTIMATE	AS BUILT		
8" SEWER	4,465 L.F.	4,495 L.F.	P.V.C. D.I.P.	A+P WATER & SEWER SUPPLIES, INC. SDR-35
MANHOLES	18 EA.	17	PRECAST MH	ATLANTIC CONCRETE PRODUCTS, INC. C-478
TOTAL MH DEPTH	226 V.F.	182 V.F.		
6" S.H.C.	285 L.F.	298 L.F.	P.V.C.	A+P WATER & SEWER SUPPLIES, INC. SDR-35

DEVELOPER'S CERTIFICATION

"I/WE CERTIFY THAT ALL DEVELOPMENT AND CONSTRUCTION WILL BE DONE ACCORDING TO THIS PLAN, AND THAT ANY RESPONSIBLE PERSONNEL INVOLVED IN THE CONSTRUCTION PROJECT WILL HAVE A CERTIFICATE OF ATTENDANCE AT A DEPARTMENT OF NATURAL RESOURCES APPROVED TRAINING PROGRAM FOR THE CONTROL OF SEDIMENT AND EROSION BEFORE BEGINNING THE PROJECT."

BUREAU OF ENGINEERING DATE
DEPARTMENT OF PUBLIC WORKS

ENGINEER'S CERTIFICATION

I CERTIFY THAT THIS PLAN FOR EROSION & SEDIMENT CONTROL REPRESENTS A PRACTICAL AND WORKABLE PLAN BASED ON MY PERSONAL KNOWLEDGE OF THE SITE CONDITIONS AND THAT IT WAS PREPARED IN ACCORDANCE WITH THE REQUIREMENTS OF THE HOWARD COUNTY SOIL CONSERVATION DISTRICT.

David R. Hall 10/13/86
DATE

FREDERICK WARD ASSOC. INC.
5 SOUTH MAIN STREET
BELAIR, MARYLAND 21014

REVIEWED FOR HOWARD COUNTY S.C.D. AND MEETS TECHNICAL REQUIREMENTS.

James M. ... 10/22/86
U.S. SOIL CONSERVATION SERVICE DATE

THIS DEVELOPMENT PLAN IS APPROVED FOR THE SOIL EROSION AND SEDIMENT CONTROL BY THE HOWARD COUNTY SOIL CONSERVATION DISTRICT.

Stephen L. ...
APPROVED DATE

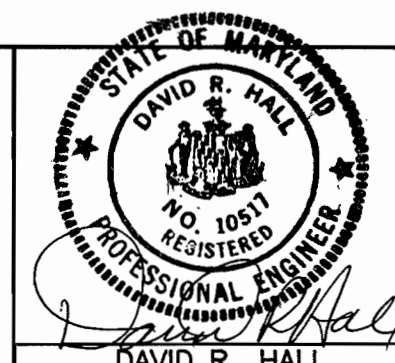
HOWARD COUNTY S.C.D.

DEPARTMENT OF PUBLIC WORKS
HOWARD COUNTY, MARYLAND

Robert ... 10-24-86
DATE

David R. Hall 10/22/86
DATE

FREDERICK WARD ASSOC. INC.
ENGINEERS-ARCHITECTS-SURVEYORS.
5 SOUTH MAIN STREET
BEL AIR, MARYLAND 21014
838-7900 879-2090



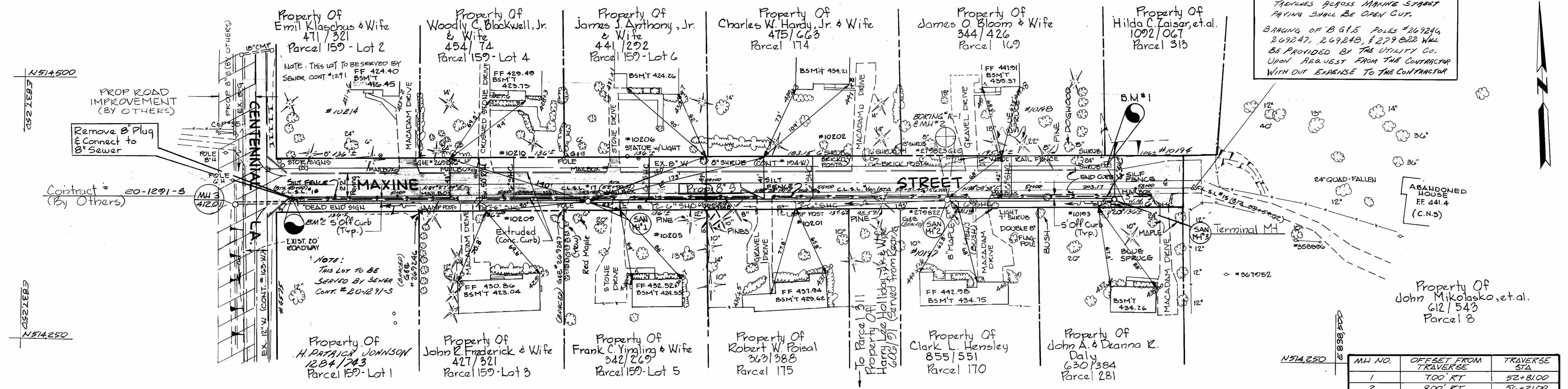
DES: S.R.B.					
DRN: T.E.R.					
CHK: D.W.					
DATE 10/6/86	BY NO.	REVISION	DATE	600' SCALE MAP NO. S-30	BLOCK NO.

**TITLE SHEET
SEWER LINE**

**CENTENNIAL PARK SEWER
CAPITAL PROJECT NO. S-6050
CONTRACT NO. 20-1325
SECOND ELECTION DISTRICT
HOWARD COUNTY, MARYLAND**

SCALE AS SHOWN
SHEET 1 OF 6

NOTE: ALL SEWER HOUSE CONNECTION TRAVELS ACROSS MAXINE STREET PAVING SHALL BE DONE CUT.
BRACING OF B.G.F. POLES #26924, 269247, 269248, #279282 WILL BE PROVIDED BY THE UTILITY CO. UPON REQUEST FROM THE CONTRACTOR WITH OUT EXPENSE TO THE CONTRACTOR

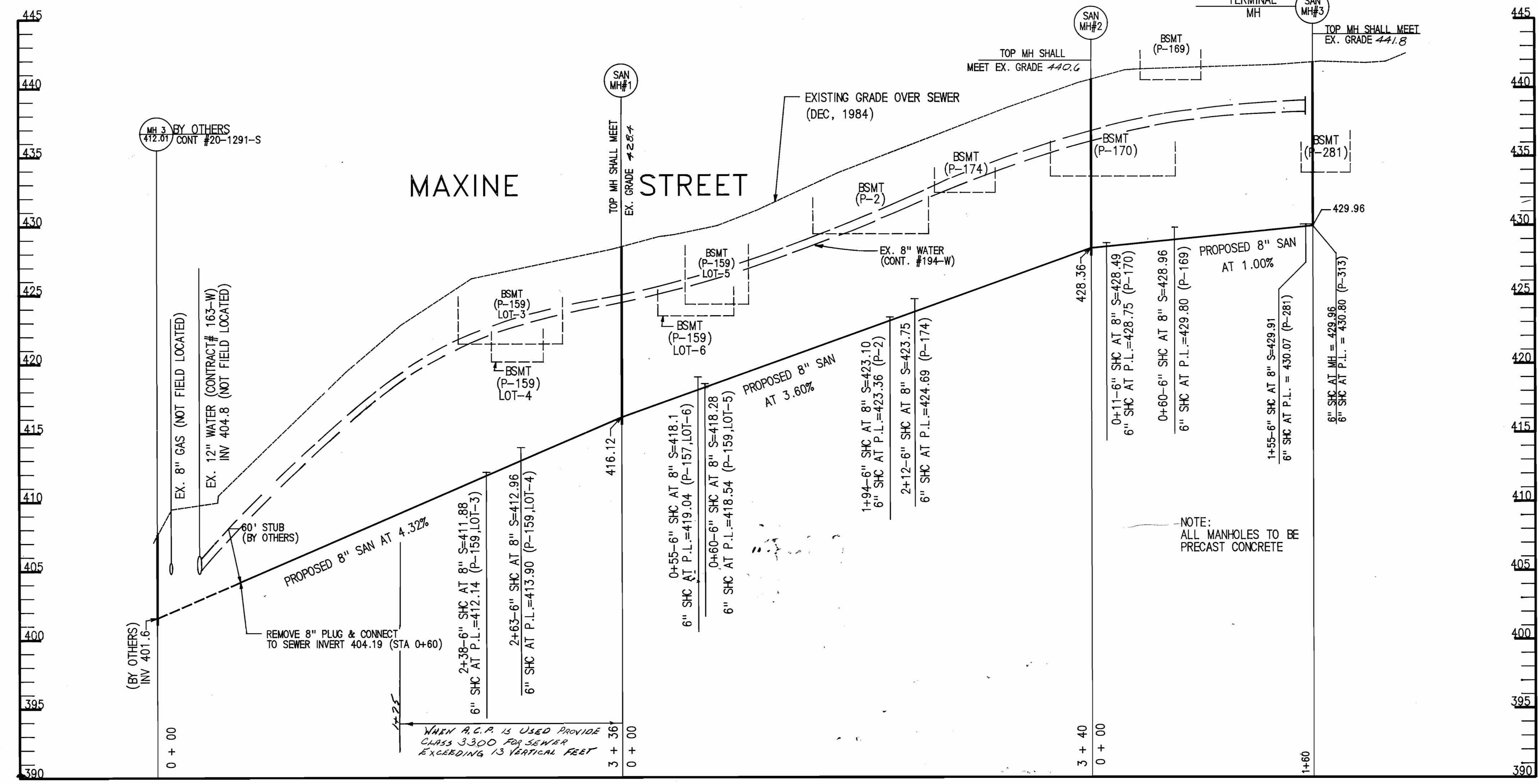
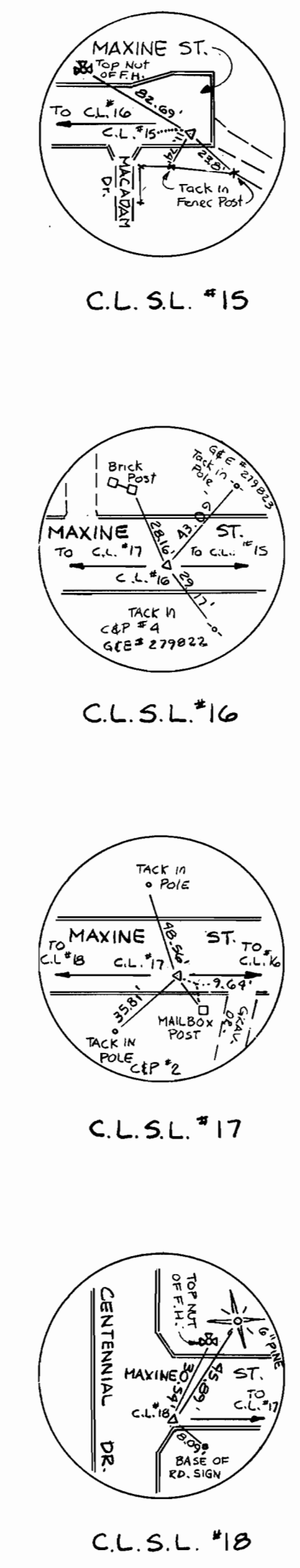


PLAN
SCALE: 1" = 50'

MH NO.	OFFSET FROM TRAVERSE	TRAVERSE STA
1	700' RT	52+81.00
2	800' RT	56+21.00
3	1000' RT	51+82.00

BENCH MARKS
BM#1 TOP OF FH ON NORTH SIDE OF MAXINE STREET 810'± EAST OF INTERSECTION OF CENTENNIAL LANE & MAXINE STREET (ELEV. 444.20)
BM#2 1/2" NAIL IN MAXINE STREET / TRAVERSE POINT (C.L.S.L. #18) SEE REFERENCE THIS SHEET (ELEV. 411.17)

TRAVERSE REFERENCES
NOT TO SCALE



PROFILE
SCALE: HORIZ: 1" = 50'
VERT: 1" = 5'

MANHOLE		MATERIAL
FROM	TO	
MH#3 (42.01) (BY OTHERS)	MH#1	(0+00 TO 0+60) BY OTHERS (0+60 TO 2+15) SOD (2+15 TO 2+26) MACADAM (2+26 TO MH#1) SOD
MH#1	MH#2	(0+00 TO 0+24) SOD (0+24 TO 0+32) GRAVEL (0+32 TO 1+62) SOD (1+62 TO 1+76) GRAVEL (1+76 TO MH#2) SOD
MH#2	MH#3	(0+00 TO 0+27) SOD (0+27 TO 0+40) MACADAM (0+40 TO MH#3) SOD

DEPARTMENT OF PUBLIC WORKS
HOWARD COUNTY, MARYLAND
DATE: 10-27-86
DATE: 10-29-86

FREDERICK WARD ASSOCIATES INC.
ENGINEERS-ARCHITECTS-SURVEYORS
5 SOUTH MAIN STREET
BEL AIR, MARYLAND 21014
838-7900 879-2090

DES: S.R.B.	DATE: 4/4/86	BY: NO.	REVISION
DRN: G.P.P.			
CHK: D.W.			

PLAN AND PROFILE
SEWER LINE
600' SCALE MAP NO. S-30, BLOCK NO.

CENTENNIAL PARK SEWER
CAPITAL PROJECT NO. S-6050
CONTRACT NO. 20-1325
SECOND ELECTION DISTRICT
HOWARD COUNTY, MARYLAND

SCALE AS SHOWN
SHEET 2 OF 6

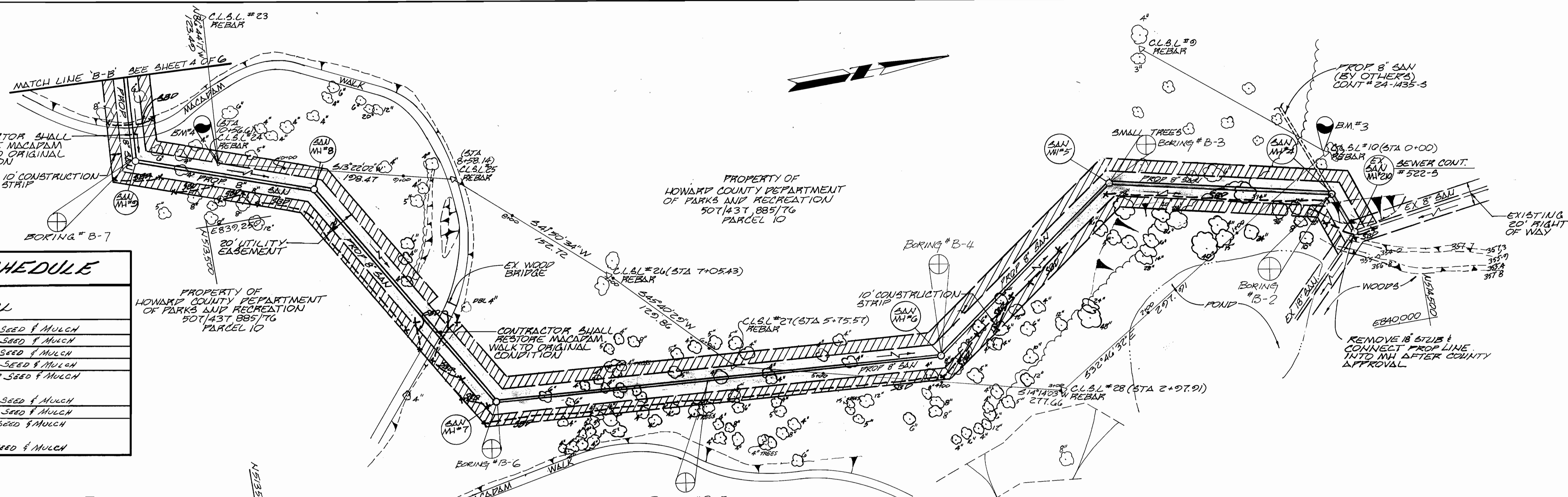
MH NO.	OFFSET FROM TRAVERSE STA.	TRAVERSE STA.
4	2981 LT	0+21.57
5	103.00 RT	1+53.00
6	22.00 RT	4+01.91
7	141.00 LT	7+29.43
8	16.00 LT	9+73.14
9	70.00 LT	10+65.61

BENCH MARKS
 B.M. #3 REBAR SET IN GROUND (TRAVERSE POINT *C.L.S.L.#10) SEE REFERENCE THIS SHEET ELEV 363.96
 B.M. #4 REBAR SET IN GROUND (TRAVERSE POINT *C.L.S.L.#24) SEE REFERENCE SHEET 4 OF 6 ELEV 367.62

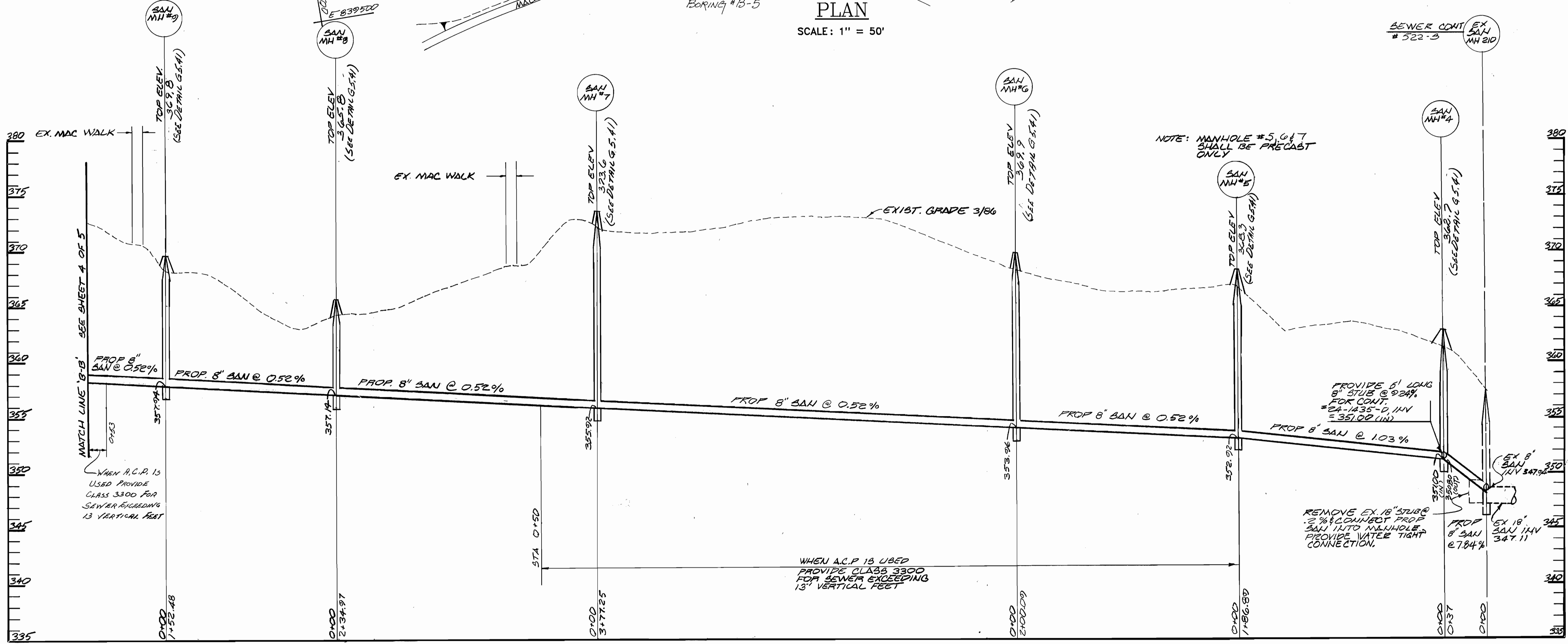
CONTRACTOR SHALL RESTORE MACADAM WALK TO ORIGINAL CONDITION
 10' CONSTRUCTION STRIP

RESTORATION SCHEDULE

MANHOLE	MATERIAL
FROM TO	
EX MH#10 MH#4	WILD FLOWER SEED & MULCH
MH#4 MH#5	WILD FLOWER SEED & MULCH
MH#5 MH#10	WILD FLOWER SEED & MULCH
MH#6 MH#7	WILD FLOWER SEED & MULCH
MH#7 MH#8	(0+00 TO 0+72) WILD FLOWER SEED & MULCH (0+72 TO 0+82) MACADAM (0+82 TO MH#8) WILD FLOWER SEED & MULCH
MH#8 MH#9	WILD FLOWER SEED & MULCH
MH#9 MH#10	(0+00 TO 0+20) WILD FLOWER SEED & MULCH (0+20 TO 0+30) MACADAM (0+30 TO MH#10) WILD FLOWER SEED & MULCH

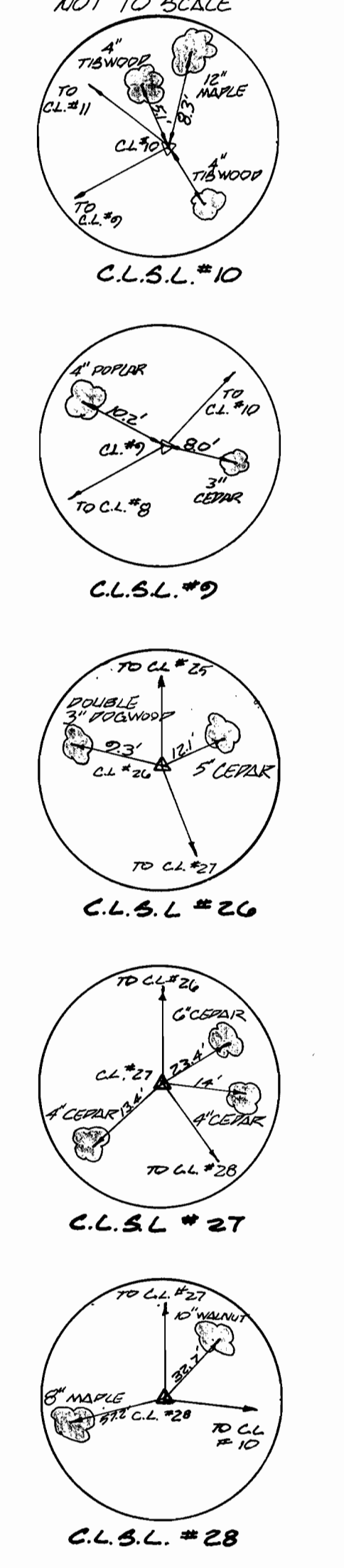


PLAN
SCALE: 1" = 50'



PROFILE
SCALE: HORIZ: 1" = 50'
VERT: 1" = 5'

TRAVERSE REFERENCES



DEPARTMENT OF PUBLIC WORKS
 HOWARD COUNTY, MARYLAND
 DATE 10-24-86
 DATE 10/23/86

FREDERICK WARD ASSOCIATES INC.
 ENGINEERS-ARCHITECTS-SURVEYORS.
 5 SOUTH MAIN STREET
 BEL AIR, MARYLAND 21014
 838-7900 879-2090

DES: S.R.B.	
DRN: G.P.P.	
CHK: D.W.	
DATE: 4/4/86	
BY NO.	
REVISION	

PLAN AND PROFILE SEWER LINE

CENTENNIAL PARK SEWER
 CAPITAL PROJECT NO. S-6050
 CONTRACT NO. 20-1325
 SECOND ELECTION DISTRICT
 HOWARD COUNTY, MARYLAND

SCALE AS SHOWN
 SHEET 3 OF 6.

MH NO.	OFFSET FROM TRAVERSE STA	TRAVERSE STA
10	154.00 LT	12+57.10
11	142.00 RT	15+57.94
12	139.00 RT	15+92.96
13	80.00 RT	18+60.35

BENCH MARKS
 B.M. #5 REBAR SET IN GROUND
 (TRAVERSE POINT "CL.S.L.#23")
 SEE TRAVERSE REFERENCE THIS SHEET
 ELEV. 379.40
 B.M. #6 REBAR SET IN GROUND
 (TRAVERSE POINT "CL.S.L.#3")
 SEE TRAVERSE REFERENCE SHEET 5 OF 6
 ELEV. 419.01

RESTORATION SCHEDULE

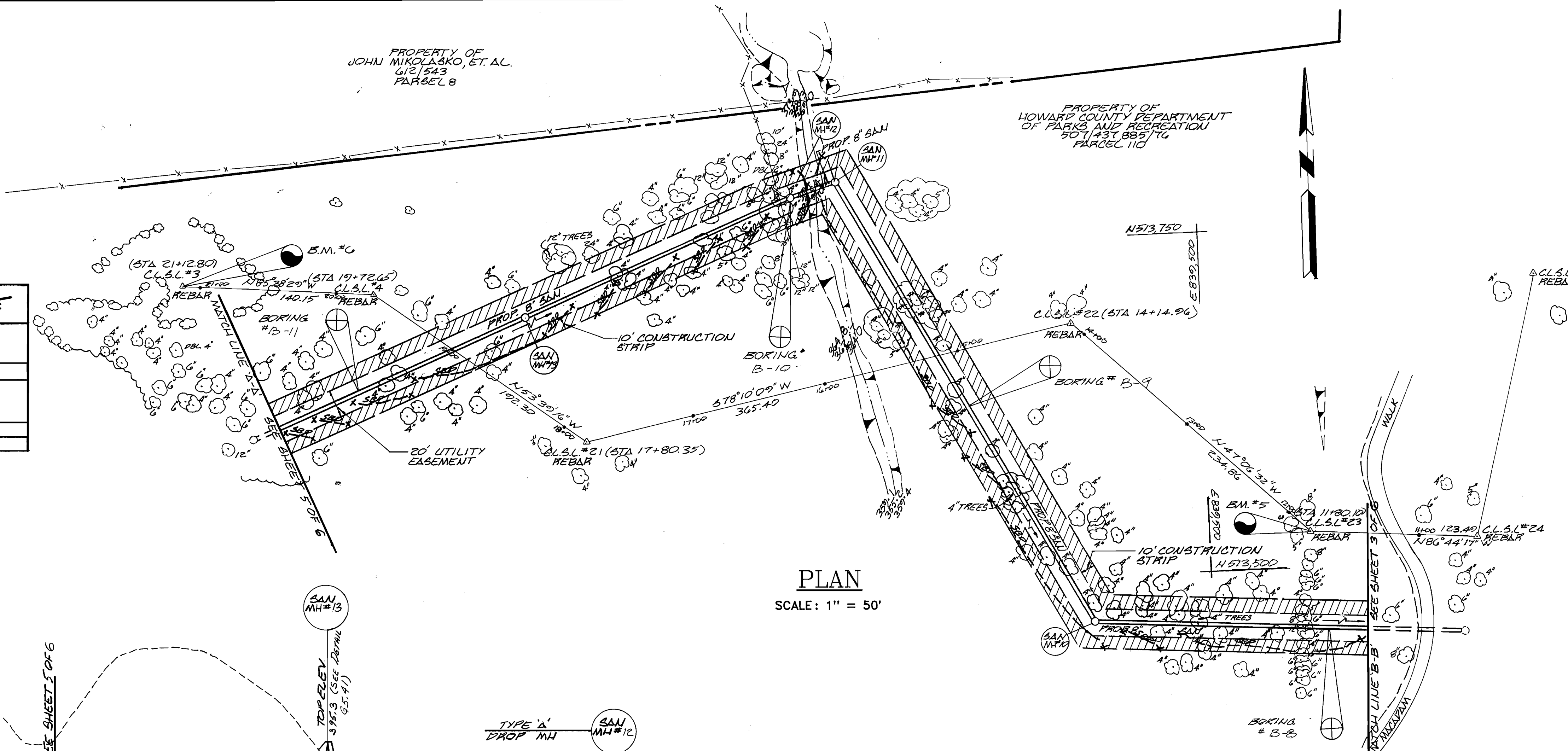
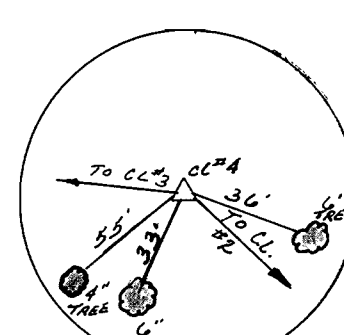
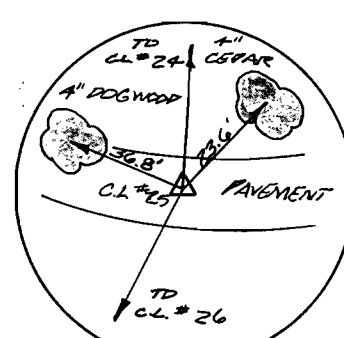
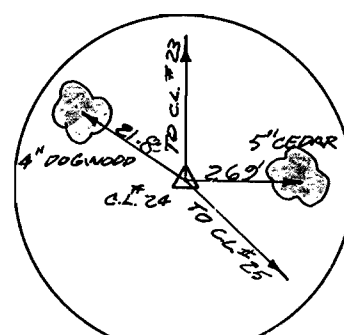
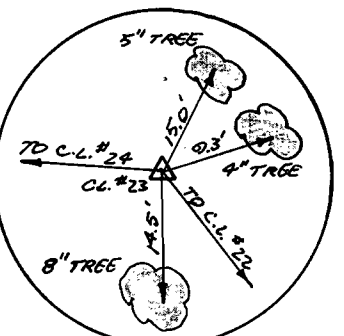
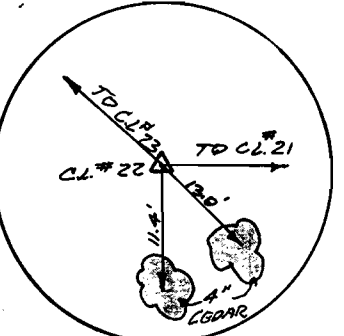
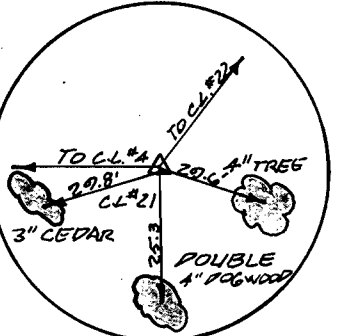
MANHOLE FROM	TO	MATERIAL
MH#10	MH#11	WILD FLOWER SEED & MULCH
MH#11	MH#12	WILD FLOWER SEED & MULCH (0+00 TO 0+10) RIP-RAP (0+10 TO 0+20)
MH#12	MH#13	WILD FLOWER SEED & MULCH (0+20 TO MH#12)
MH#13	MH#14	WILD FLOWER SEED & MULCH

PROPERTY OF
 JOHN MIKOLASKO, ET. AL.
 612 EAS
 PARCEL 8

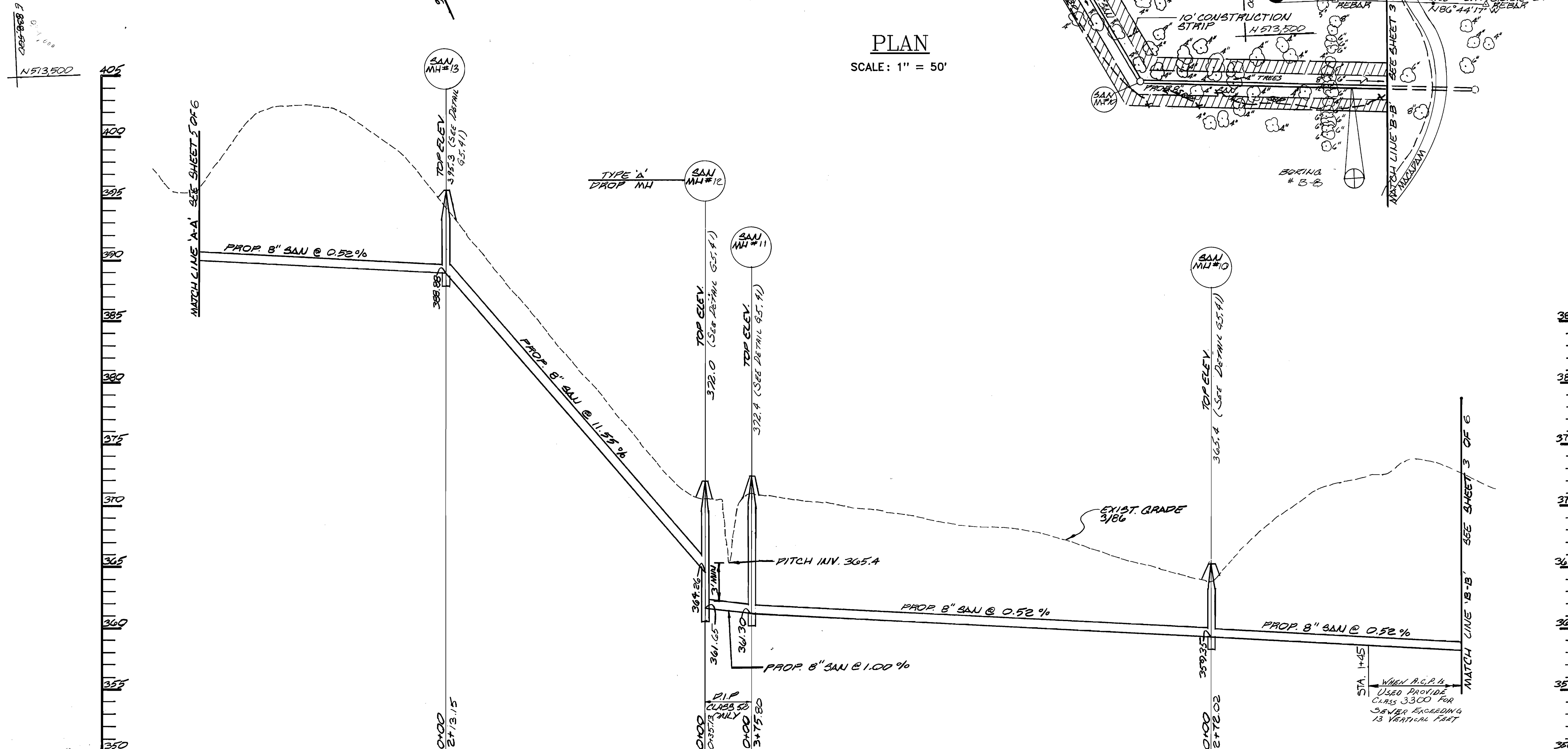
PROPERTY OF
 HOWARD COUNTY DEPARTMENT
 OF PARKS AND RECREATION
 3071 1431 8557 TG
 PARCEL 110

TRAVERSE REFERENCES

NOT TO SCALE



PLAN
 SCALE: 1" = 50'



PROFILE
 SCALE: HORIZ: 1" = 50'
 VERT: 1" = 5'

DEPARTMENT OF PUBLIC WORKS
 HOWARD COUNTY, MARYLAND
 DIRECTOR OF PUBLIC WORKS: [Signature]
 CHIEF, BUREAU OF UTILITIES: [Signature]

FREDERICK WARD ASSOCIATES INC.
 ENGINEERS-ARCHITECTS-SURVEYORS.
 6 SOUTH MAIN STREET
 BEL AIR, MARYLAND 21014
 838-7900 879-2090

DES: S.R.B.			
DRN: G.P.P.			
CHK: D.W.			
DATE: 4/4/86	BY: NO.	REVISION	DATE

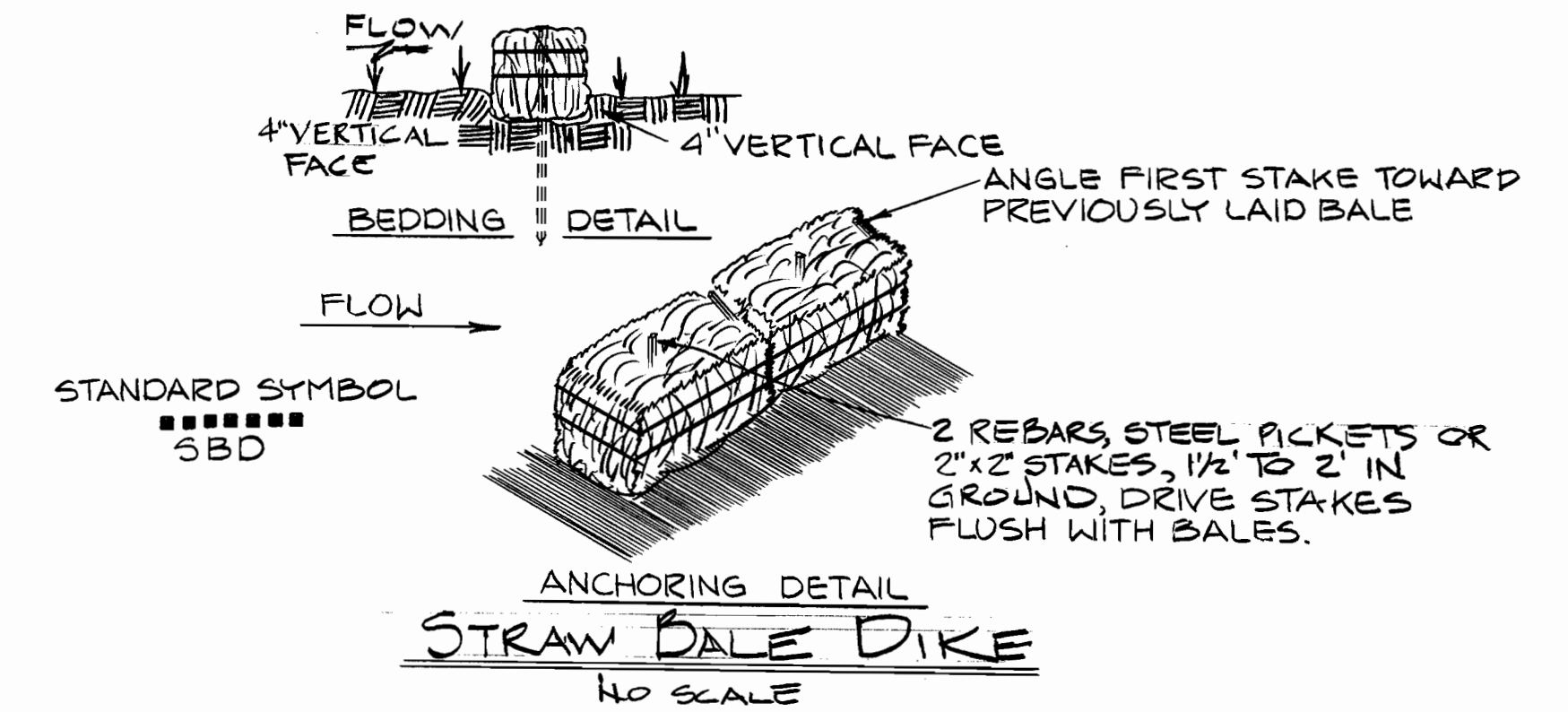
**PLAN AND PROFILE
 SEWER LINE**

CENTENNIAL PARK SEWER
 CAPITAL PROJECT NO. S-6050
 CONTRACT NO. 20-1325
 SECOND ELECTION DISTRICT
 HOWARD COUNTY, MARYLAND

SCALE AS SHOWN
 SHEET 4 OF 6

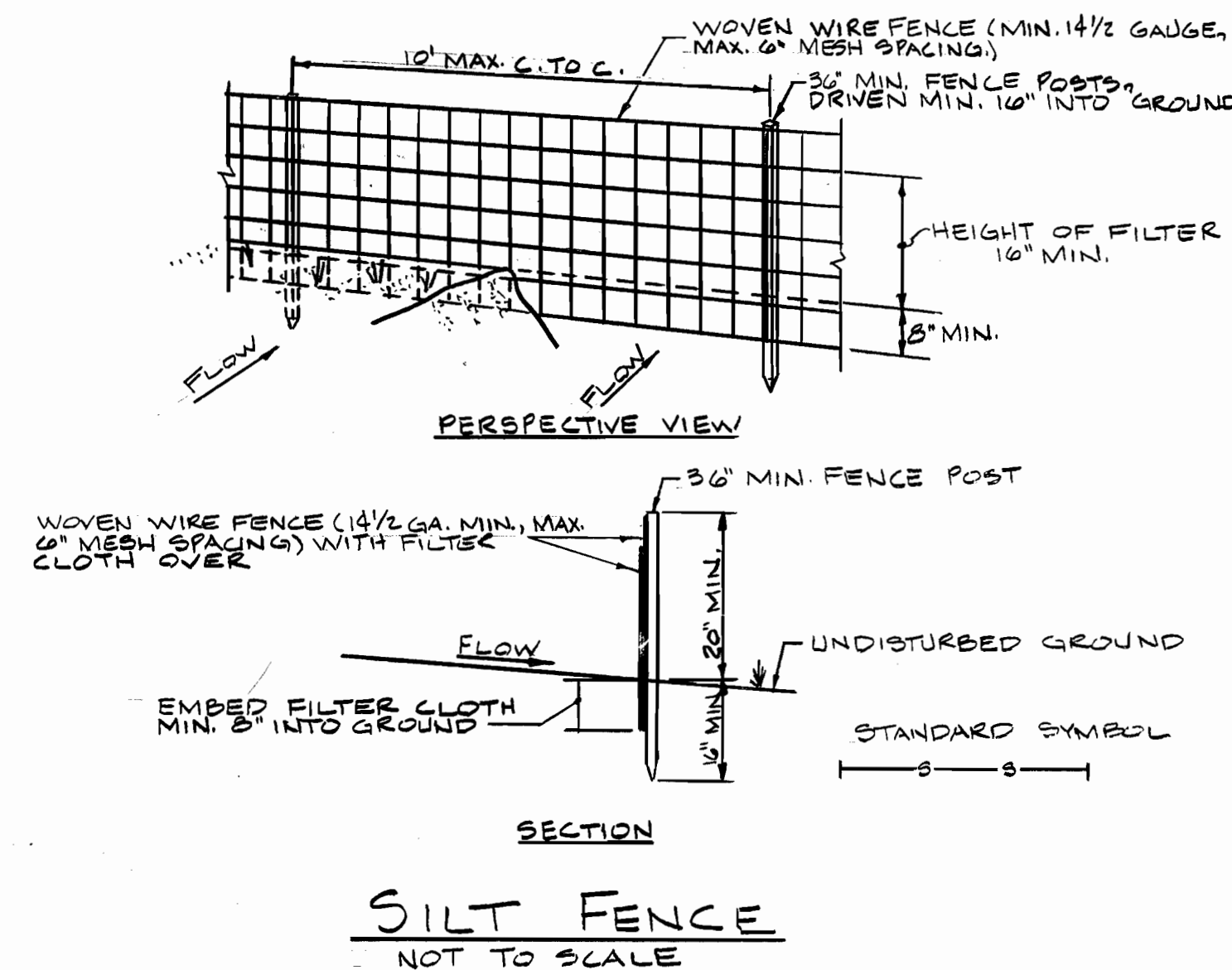
CONSTRUCTION SPECIFICATIONS FOR STRAW BALE DIKE

- BALES SHALL BE PLACED AT THE TOE OF A SLOPE OR ON THE CONTOUR AND IN A ROW WITH ENDS TIGHTLY ABUTTING THE ADJACENT BALES.
- EACH BALE SHALL BE EMBEDDED IN THE SOIL A MINIMUM OF (4) INCHES, AND PLACED SO THE BINDINGS ARE HORIZONTAL.
- BALES SHALL BE SECURELY ANCHORED IN PLACE BY EITHER TWO STAKES OR RE-BARS DRIVEN THROUGH THE BALE. THE FIRST STAKE IN EACH BALE SHALL BE DRIVEN TOWARD THE PREVIOUSLY LAID BALE AT AN ANGLE TO FORCE THE BALES TOGETHER. STAKES SHALL BE DRIVEN FLUSH WITH THE BALE.
- INSPECTION SHALL BE FREQUENT AND REPAIR REPLACEMENT SHALL BE MADE PROMPTLY AS NEEDED.
- BALES SHALL BE REMOVED WHEN THEY HAVE SERVED THEIR USEFULNESS SO AS NOT TO BLOCK OR IMPEDE STORM FLOW OR DRAINAGE.



CONSTRUCTION NOTES FOR FABRICATED SILT FENCE

- WOVEN WIRE FENCE TO BE FASTENED SECURELY TO FENCE POSTS WITH WIRE TIES OR STAPLES.
 - FILTER CLOTH TO BE FASTENED SECURELY TO WOVEN WIRE FENCE WITH TIES SPACED EVERY 24" AT TOP AND MID SECTION.
 - WHEN TWO SECTIONS OF FILTER CLOTH ADJOIN EACH OTHER THEY SHALL BE OVERLAPPED BY SIX INCHES AND FOLDED.
 - MAINTENANCE SHALL BE PERFORMED AS NEEDED AND MATERIAL REMOVED WHEN "BULGES" DEVELOP IN THE SILT FENCE.
- POSTS: STEEL EITHER T OR U TYPE OR 2" HARDWOOD
 FENCE: WOVEN WIRE, 14 1/2 GA. 6" MAX. MESH SPACING
 FILTER CLOTH: FILTER Y, MIRAFI 100X, STAB-LINKA T140N OR APPROVED EQUAL
 PREFABRICATED UNIT: GEOFAB, ENVROFENCE, OR APPROVED EQUAL



DEPARTMENT OF PUBLIC WORKS
HOWARD COUNTY, MARYLAND

John F. Neumaier
DIRECTOR OF PUBLIC WORKS
DATE: 10-27-84

William R. Ray
CHIEF, BUREAU OF ENGINEERING
DATE: 10/23/84

FREDERICK WARD ASSOC. INC.
ENGINEERS-ARCHITECTS-SURVEYORS
5 SOUTH MAIN STREET
BEL AIR, MARYLAND, 21014
838-7900 879-2090

DAVID R. HALL

DES: S.R.B.

DRN: T.E.R.

CHK: D.W.

DATE: 12/10/84

BY NO.

REVISION

DATE

600' SCALE MAP NO. S-30 BLOCK NO.

DETAILS
SEWER LINE

CENTENNIAL PARK SEWER
CAPITAL PROJECT NO. S-6050
CONTRACT NO 20-1325
SECOND ELECTION DISTRICT
HARFORD COUNTY, MARYLAND

SCALE
AS
SHOWN

SHEET
6 OF 6