

WATER CODE: CCA  
SEWER CODE: E010000

TYP. OF BUILDING: OFFICE & WAREHOUSE  
NUMBER OF LOTS: 3  
NUMBER OF WATER HOUSE CONNECTIONS: 3  
NUMBER OF SEWER HOUSE CONNECTIONS: 3  
DRAINAGE AREA: LITTLE PATUXENT

VICINITY MAP  
SCALE: 1"=100'

**GENERAL NOTES**

- PART I**
- Approximate location of existing mains are shown. The contractor shall take all necessary precautions to protect existing mains and services and maintain uninterrupted supply. Any damage incurred shall be repaired immediately to the satisfaction of the Engineer at the Contractor's expense.
  - All horizontal controls are based on Maryland State Coordinates.
  - All vertical controls are based on U.S.G.S. data.
  - All pipe elevations shown are invert elevations.
  - Clear all utilities by a minimum of 4'. Clear all poles by 2'-0" minimum or tunnel as required. The owner has contacted the utility companies and has made arrangements for bracing of poles as shown on the drawings. In the event the contractor's work requires the bracing of additional poles, any cost incurred by the owner for the bracing of additional poles or damages shall be deducted from money owed the contractor. The contractor shall coordinate with the utility companies to schedule the bracing of the poles.
  - For details not shown on the drawings, and for materials and construction methods, use Howard County Design Manual, Volume IV, Standard Specifications and Details for Construction. The contractor shall have a copy of Volume IV on the job.
  - Where test pits have been made on existing utilities, they are noted by the symbol [ ] at the location of the test pit. A note or notes containing the results of the test pit or pits is included on the drawings. Existing utilities in the vicinity of the proposed work for which test pits have not been dug shall be located by the contractor two weeks in advance of construction operations at his own expense.
  - Contractor shall notify the following utilities or agencies at least five working days before starting work shown on these plans:
    - State Highway Administration - 931-9933
    - Baltimore Gas & Electric Co. Contractor Services 581-2905
    - Baltimore Gas & Electric Co. Under Ground Damage Control 294-5821
    - Baltimore Gas & Electric Co. Trouble Shooting 298-9013
    - Water Utility - 1-555-0100
    - Colonial Pipeline Co. 795-1390
    - Bureau of Utilities, Howard Co. Dept. of Public Works - 992-2966
  - Trees and shrubs are to be protected from damage to maximum extent. Trees and shrubs located within the construction strip are not to be removed or damaged by the contractor.
  - Contractor shall remove trees, stumps and roots along line of excavation. Payment for such removal shall be included in the unit price bid for construction of the main.
- PART II - WATER**
- All water mains to be R.I.P. unless otherwise noted.
  - Top of all water mains to have a minimum of 3'-1/2" cover unless otherwise noted.
  - Valves adjacent to tees shall be strapped to tees.
  - All fittings shall be buttressed or anchored with concrete in accordance with the Standard Details unless otherwise provided for on the drawings.
  - Fire hydrants shall be set to the bury line elevations shown on the drawings. All fire hydrants shall be strapped and buttressed with concrete in accordance with Standard Details. Soil around the fire hydrant shall be compacted in accordance with Section 1003 of the Standard Specifications.
  - The contractor shall not operate any water main valves on the existing water system.
  - All water house connections shall be inside meter cuttings unless otherwise shown.
- PART III - SEWER**
- All sewer mains shall be C.I.P.C., R.C.P.P., V.C.P.C., A.C.P. Class 2400 or R.V.C. unless otherwise noted.
  - The contractor shall provide a joint in all sewer mains within 2'-0" of exterior manhole wall.
  - All manholes shall be 4'-0" inside diameter unless otherwise noted.
  - Manholes shown with 12" and 18" walls are brick manholes only.
  - Manholes designated W.T. in the plan and profile shall have watertight frame and covers, Standard Details 552. Where watertight manhole frame and cover is used, set top of frame 1'-6" above finished grade unless otherwise noted on the drawings.
  - House(s) with the symbol "C.N.S." indicates that cellar cannot be served.

REVIEWED FOR HOWARD SOIL CONSERVATION DISTRICT AND MEETS TECHNICAL REQUIREMENTS.

*James M. Veln* 1-28-85  
SIGNATURE DATE  
U.S. SOIL CONSERVATION SERVICE

This Development Plan is approved for Soil Erosion and Sediment Control by the Howard Soil Conservation District.

APPROVED: *Stephen L. Fahn* 1/28/85  
HOWARD SOIL CONSERVATION DISTRICT DATE

Sediment Control Measures for This Contract Will Be Implemented In Accordance With Article 15 & SDP 85-13 Of The Standard Specifications.

DEPARTMENT OF PUBLIC WORKS  
HOWARD COUNTY, MARYLAND

*F. Nummy* 1-28-85  
DIRECTOR OF PUBLIC WORKS DATE

*Richard Benjamin* 1-28-85  
CHIEF, BUREAU OF UTILITIES - DATE

*William J. ...* 1-28-85  
CHIEF, LAND DEVELOPMENT DIVISION - DATE

GEORGE WILLIAM STEPHENS JR.  
AND ASSOCIATES  
303 ALLEGHENY AVE.  
TOWSON, MARYLAND 21284  
825-8120

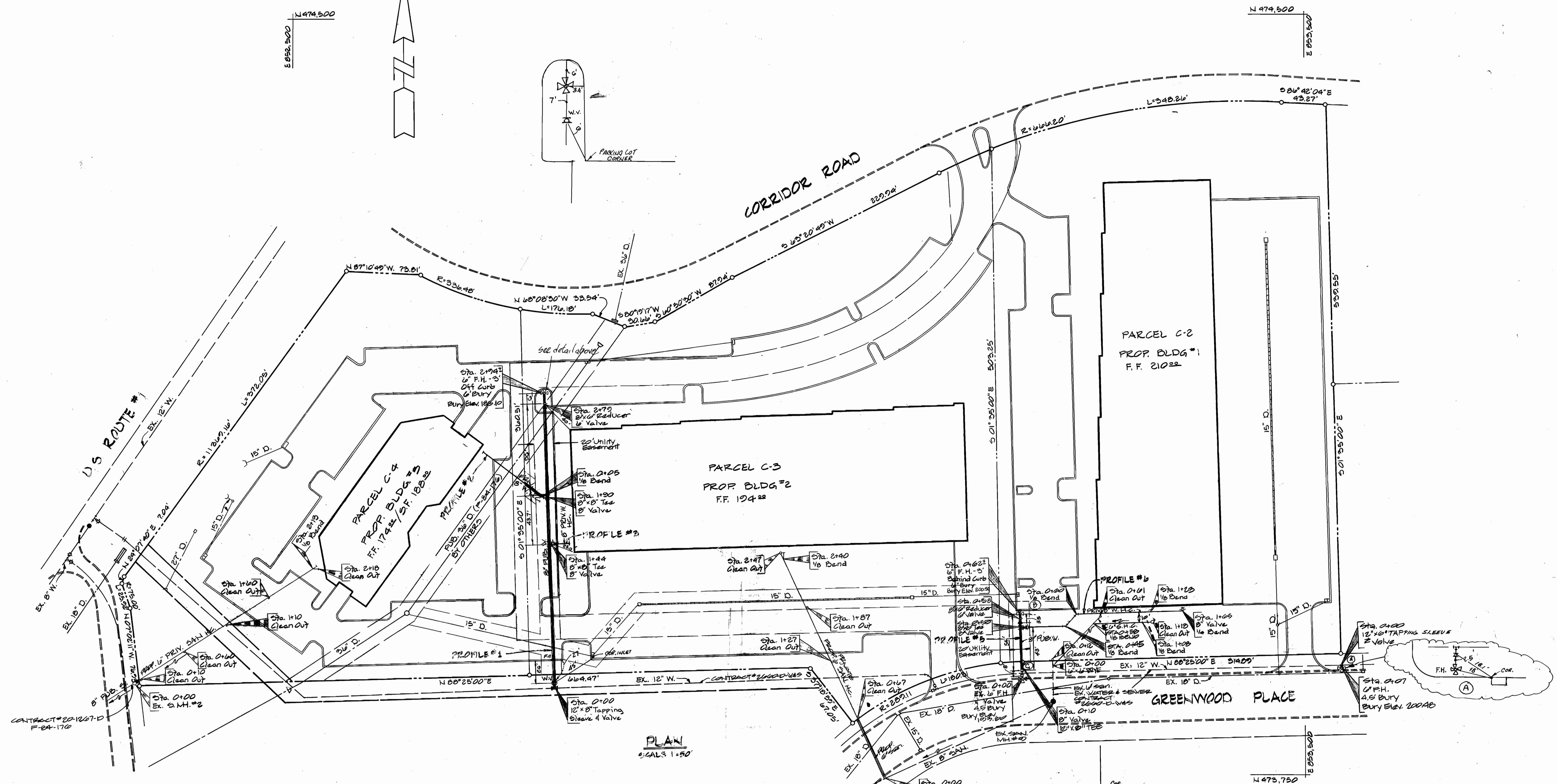
DES: R.W.R.	CAH	ADDED 2" C.I. ENCASEMENTS (A 100) PARCELS C-2 & C-3. REVISED PROFILES TO SEWER HOUSE CONNECTIONS TO BE 12" WALLS. CHANGED STA. 1+44 TO STA. 1+45. REVISED GRADES TO MATCH CHANGED STA. 1+44 TO 1+45. REVISED GRADES TO MATCH CHANGED STA. 1+44 TO 1+45. REVISED GRADES TO MATCH CHANGED STA. 1+44 TO 1+45.	1/19/85
DRN: D.R.R.	"	"	"
CHK: R.W./T.C.	"	"	"
DATE: 10-84	K.O.I.	AS BUILT CONDITIONS ADDED TO PLAN	5/21/85
BY NO.	REVISION		DATE

PLAN & PROFILE  
FOR  
WATER MAIN & SEWER MAIN  
CONTRACT NO.:  
24-1320-D  
600' SCALE MAP NO. 21 & 40 BLOCK NO.

CORRIDOR INDUSTRIAL PARK  
SECTION 1 PARCELS C-2, C-3, & C-4  
ELECTION DISTRICT 6  
HOWARD COUNTY, MARYLAND  
OCTOBER 23, 1984

SCALE AS SHOWN  
SHEET 1 OF 2

QUANTITIES			
ITEM	ESTIMATED	AS-BUILT	MATERIAL/SUPPLIER
8" Water	255 L.F.	350'	U.S. PIPE CO. 52
12" Water	29 L.F.	28'	U.S. PIPE CO. 52
12" Fire Hydrant	3 Ea.	3EA	MUELLER CO.
12" TAPPING SLEEVE	1 Ea.	1EA	"
6" Sewer	65 L.F.	63'	CERTAIN TEEB
8" x 16" Saddle (Sewer)	1 Ea.	1EA	TYLER
8" VALVE	3 Ea.	3EA	MUELLER CO.
12" x 6" TAPPING SLEEVE	1 Ea.	1EA	"



PLAN  
SCALE 1" = 50'

REVIEWED FOR HOWARD SOIL CONSERVATION DISTRICT AND MEETS TECHNICAL REQUIREMENTS.  
*James M. Helm* 1-29-85  
 SIGNATURE DATE  
 U.S. SOIL CONSERVATION SERVICE

This Development Plan is approved for Soil Erosion and Sediment Control by the Howard Soil Conservation District.  
 APPROVED:  
*Stephen L. Hubler* 1/29/85  
 SIGNATURE DATE  
 HOWARD SOIL CONSERVATION DISTRICT

Sediment Control Measures For This Contract Will Be Implemented In Accordance With Article 15 & SDP 85-13 Of The Standard Specifications.

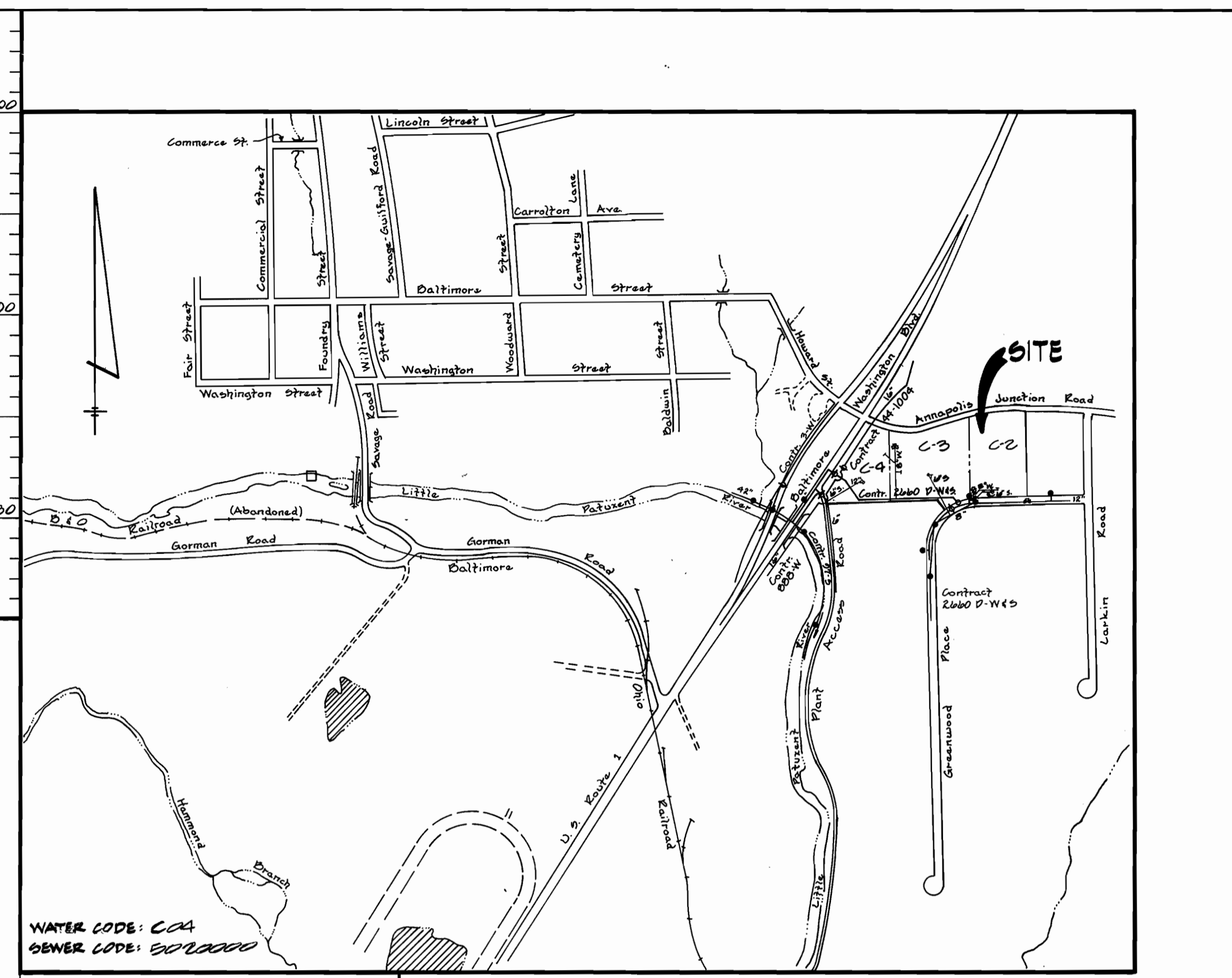
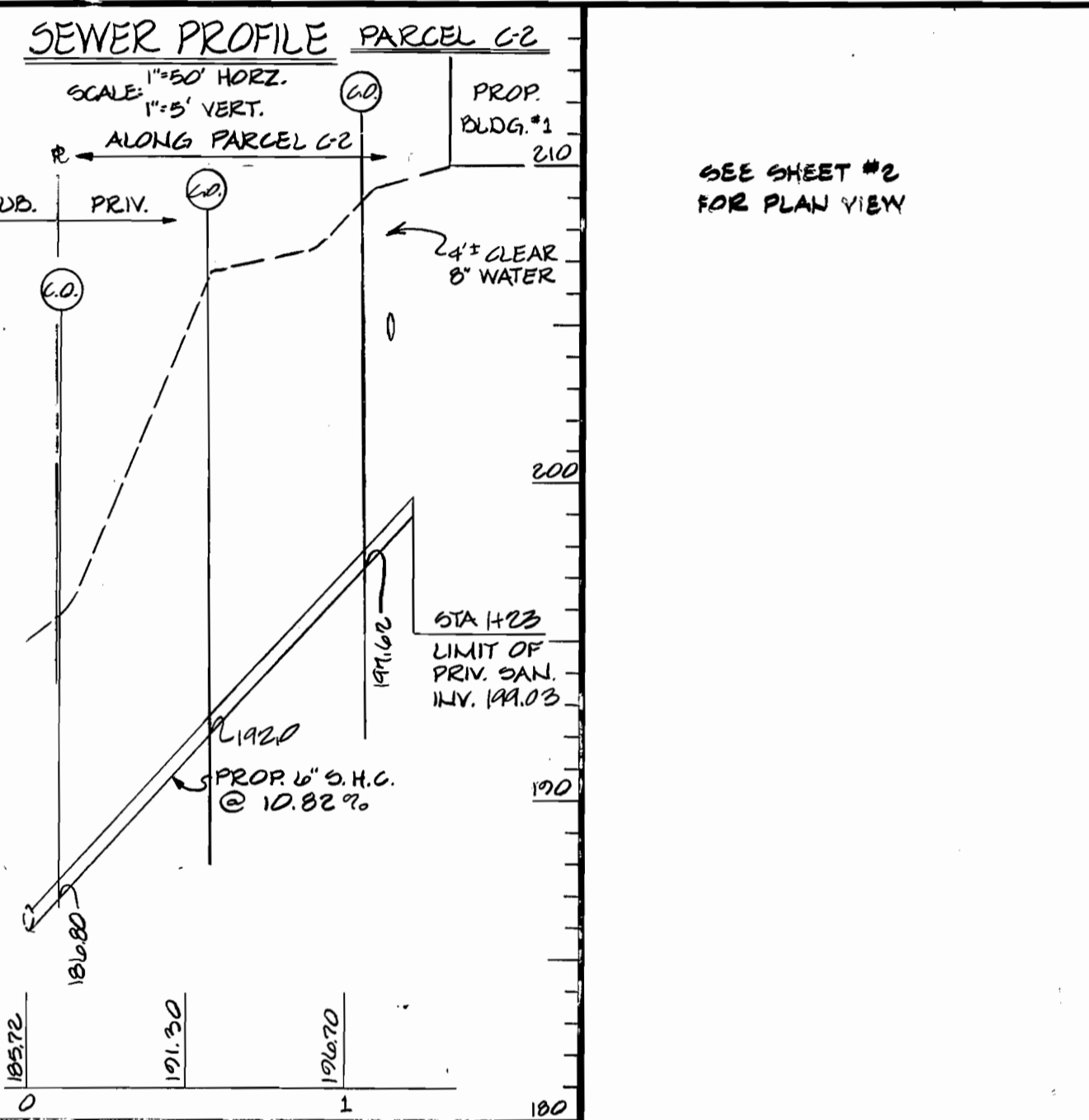
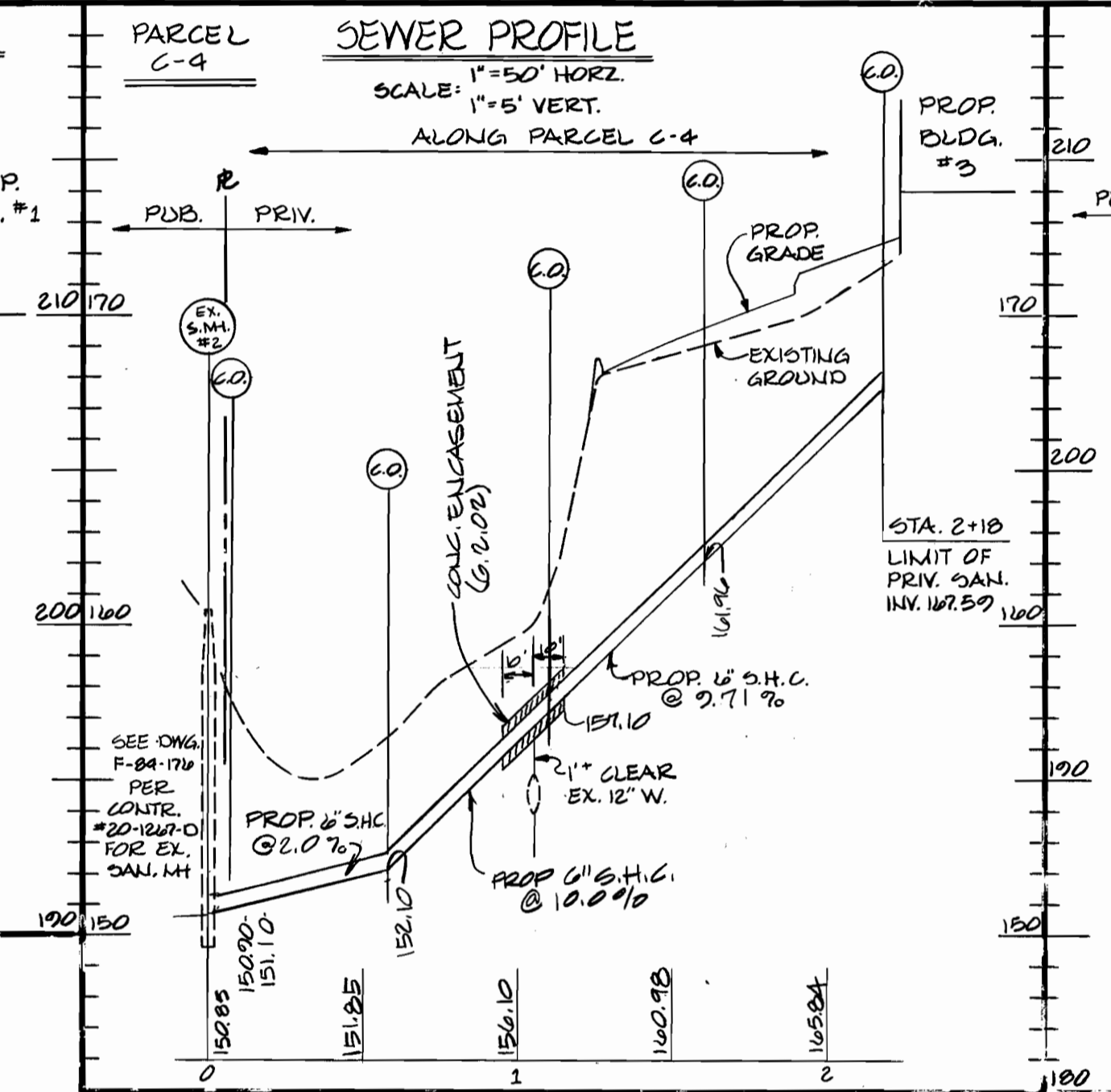
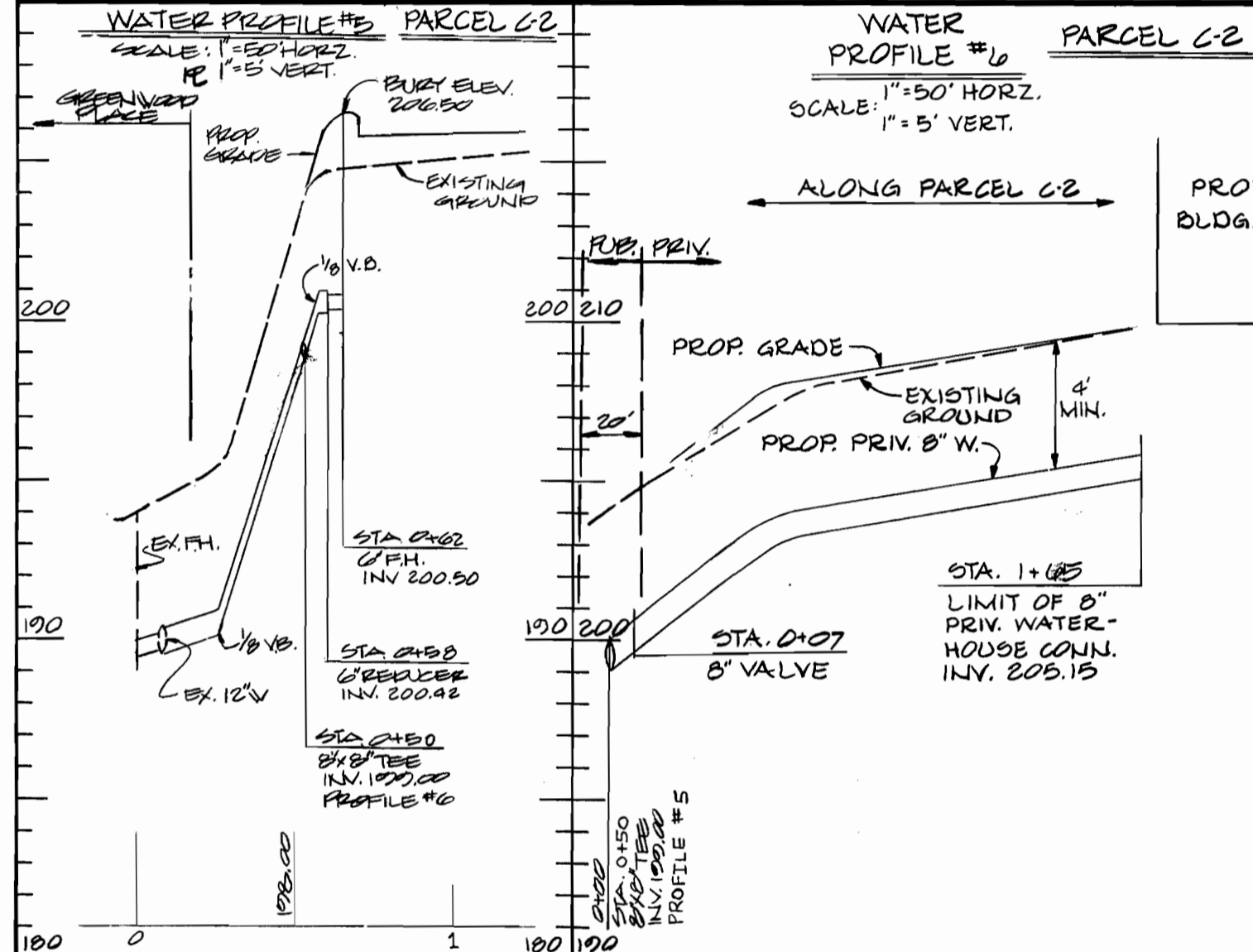
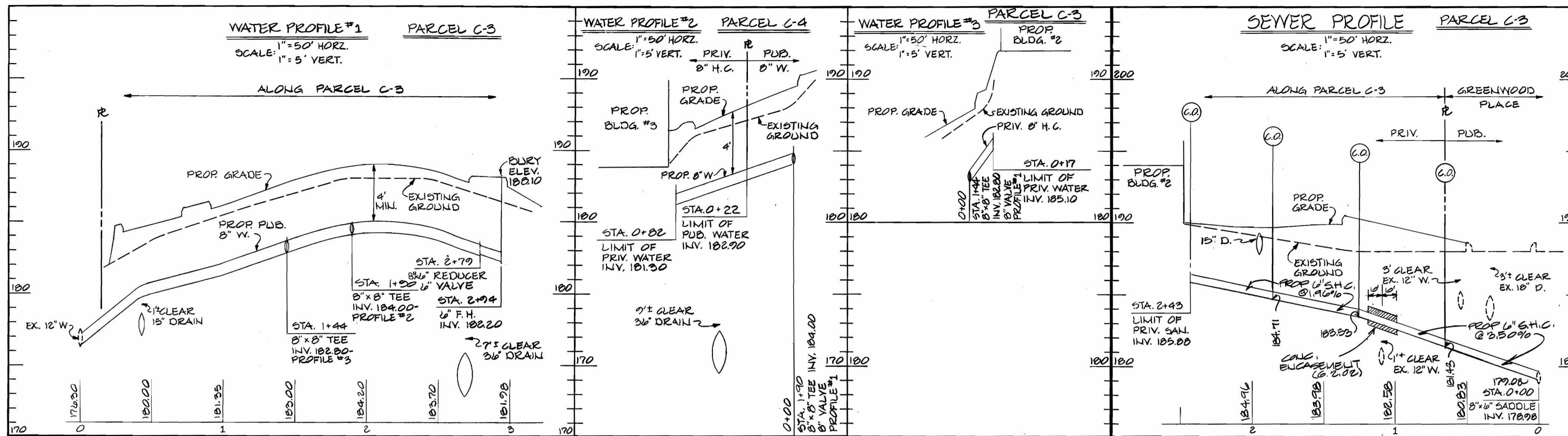
DEPARTMENT OF PUBLIC WORKS  
 HOWARD COUNTY, MARYLAND  
*John F. Newman* 1-29-85  
 DIRECTOR OF PUBLIC WORKS DATE  
*William B. ...* 1-29-85  
 CHIEF BUREAU OF ENGINEERING DATE

GEORGE WILLIAM STEPHENS, JR.  
 AND ASSOCIATES  
 303 ALLEGHENY AVE.  
 TOWSON, MARYLAND 21204  
 833-8120  
*George W. Stephens, Jr.*  
 PROFESSIONAL ENGINEER

DES: R.W.R.	DATE: 10-84
DRN: D.R.R.	
CHK: R.W.R./A	
K.C.1 1	AS-BUILT CONDITIONS ADDED TO PLAN 8-6-85
BY NO.	REVISION

PLAN & PROFILE  
 FOR  
 WATER MAIN & SEWER MAIN  
 CONTRACT NO: 24-1320-D  
 600' SCALE MAP NO. 474.42 BLOCK NO.

CORRIDOR INDUSTRIAL PARK  
 SECTION 1 PARCEL C-2, C-3, & C-4  
 ELECTION DISTRICT 6  
 HOWARD COUNTY, MARYLAND  
 OCTOBER 23, 1984  
 SCALE AS SHOWN  
 SHEET 2 OF 2



WATER CODE: CCA  
SEWER CODE: E020000

TYP. OF BUILDING: OFFICE & WAREHOUSE  
NUMBER OF LOTS: 3  
NUMBER OF WATER HOUSE CONNECTIONS: 3  
NUMBER OF SEWER HOUSE CONNECTIONS: 3  
DRAINAGE AREA: LITTLE PATIENT

**VICINITY MAP**  
SCALE: 1"=100'

- GENERAL NOTES**
- PART I**
- Approximate location of existing mains are shown. The contractor shall take all necessary precautions to protect existing mains and services and maintain uninterrupted supply. Any damage incurred shall be repaired immediately to the satisfaction of the Engineer at the Contractor's expense.
  - All horizontal controls are based on Maryland State Coordinates.
  - All vertical controls are based on U.S.G.S. data.
  - All pipe elevations shown are invert elevations.
  - Clear all utilities by a minimum of 6". Clear all poles by 2'-0" minimum or tunnel as required. The owner has contacted the utilities companies and has made arrangements for bracing of poles as shown on the drawings. In the event the contractor's work requires the bracing of additional poles, any cost incurred by the owner for the bracing of additional poles or damages shall be deducted from money owed the contractor. The contractor shall coordinate with the utility companies to schedule the bracing of the poles.
  - For details not shown on the drawings, and for materials and construction methods, use Howard County Design Manual, Volume IV, Standard Specifications and Details for Construction. The contractor shall have a copy of Volume IV on the job.
  - Where test pits have been made on existing utilities, they are noted by the symbol [ ] at the location of the test pit. A note or notes containing the results of the test pit or pits is included on the drawings. Existing utilities in the vicinity of the proposed work for which test pits have not been dug shall be located by the contractor two weeks in advance of construction operations at his own expense.
  - Contractor shall notify the following utilities or agencies at least five working days before starting work shown on these plans:  
State Highway Administration - 991-9999  
Baltimore Gas & Electric Co. Contractor Services 561-2505  
Baltimore Gas & Electric Co. Under Ground Damage Control-294-5621  
Baltimore Gas & Electric Co. Trouble Shooting-298-9015  
Miss Utility-1-999-0100  
Colonial Pipeline Co. - 799-1390  
Bureau of Utilities, Howard Co. Dept. of Public Works-992-2966
  - Trees and shrubs are to be protected from damage to maximum extent. Trees and shrubs located within the construction strip are not to be removed or damaged by the contractor.
  - Contractor shall remove trees, stumps and roots along line of excavation. Payment for such removal shall be included in the unit price bid for construction of the main.
- PART II - WATER**
- All water mains to be R.I.P. unless otherwise noted.
  - Top of all water mains to have a minimum of 3'-1/2" cover unless otherwise noted.
  - Valves adjacent to tees shall be strapped to tees.
  - All fittings shall be buttressed or anchored with concrete in accordance with the Standard Details unless otherwise provided for on the drawings.
  - Fire hydrants shall be set to the bury line elevations shown on the drawings. All fire hydrants shall be strapped and buttressed with concrete in accordance with Standard Details. Soil around the fire hydrant shall be compacted in accordance with Section 1009 the Standard Specifications.
  - The contractor shall not operate any water main valves on the existing water system.
  - All water house connections shall be inside meter settings unless otherwise shown.
- PART III - SEWER**
- All sewer mains shall be C.P.P.C., R.C.S.P., V.C.P.P.C., A.C.P. Class 2400 or R.V.C. unless otherwise noted.
  - The contractor shall provide a joint in all sewer mains within 2'-0" of exterior manhole wall.
  - All manholes shall be 4'-0" inside diameter unless otherwise noted.
  - Manholes shown with 12" and 16" walls are brick manholes only.
  - Manholes designated W.T. in the plan and profile shall have watertight frame and covers, Standard Details 552. Where watertight manhole frame and cover is used, set top of frame 1'-6" above finished grade unless otherwise noted on the drawings.
  - House(s) with the symbol "G.N.S." indicates that cellar cannot be served.

REVIEWED FOR HOWARD SOIL CONSERVATION DISTRICT AND MEETS TECHNICAL REQUIREMENTS.

*James M. Vela* 1-28-85  
SIGNATURE DATE  
U.S. SOIL CONSERVATION SERVICE

This Development Plan is approved for Soil Erosion and Sediment Control by the Howard Soil Conservation District.

APPROVED: *Stephen L. Hanks* 1/29/85  
HOWARD SOIL CONSERVATION DISTRICT DATE

Sediment Control Measures for This Contract Will Be Implemented In Accordance With Article 15 & SDP 85-13 of The Standard Specifications.

DEPARTMENT OF PUBLIC WORKS  
HOWARD COUNTY, MARYLAND

*W. F. Nemyer* 1-28-85  
DIRECTOR OF PUBLIC WORKS DATE

*Ruth Benner* 1-29-85  
CHIEF, BUREAU OF UTILITIES - DATE

*W. F. Nemyer* 1-29-85  
CHIEF, BUREAU OF ENGINEERING DATE

*W. F. Nemyer* 1-29-85  
CHIEF, LAND DEVELOPMENT DIVISION - DATE

GEORGE WILLIAM STEPHENS JR  
AND ASSOCIATES  
303 ALLEGHENY AVE.  
TOWSON, MARYLAND 21284  
825-8120

DES: R.W.R.	CAH	ADDED SOIL ENFORCEMENTS TO PARCEL C-3 & C-4. REVISED PROFILE #5 TO SEWER HOUSE CONNECTION OF PARCEL C-3. REVISED STA. 1+00 PROFILE #5 TO 1+00.00. REVISED STA. 1+00 PROFILE #6 TO 1+00.00. REVISED STA. 1+00 PROFILE #6 TO 1+00.00. REVISED STA. 1+00 PROFILE #6 TO 1+00.00. REVISED STA. 1+00 PROFILE #6 TO 1+00.00.	4/1/85
DRN: D.R.R.	CAH	REVISED STA. 1+00 PROFILE #5 TO 1+00.00. REVISED STA. 1+00 PROFILE #6 TO 1+00.00. REVISED STA. 1+00 PROFILE #6 TO 1+00.00. REVISED STA. 1+00 PROFILE #6 TO 1+00.00.	"
CHK: R.N.F./T.C.	CAH	REVISED STA. 1+00 PROFILE #5 TO 1+00.00. REVISED STA. 1+00 PROFILE #6 TO 1+00.00. REVISED STA. 1+00 PROFILE #6 TO 1+00.00. REVISED STA. 1+00 PROFILE #6 TO 1+00.00.	"
DATE: 10-84	K.C.I.	AS BUILT CONDITIONS ADDED TO PLAN	5/21/89
BY NO.		REVISION	DATE

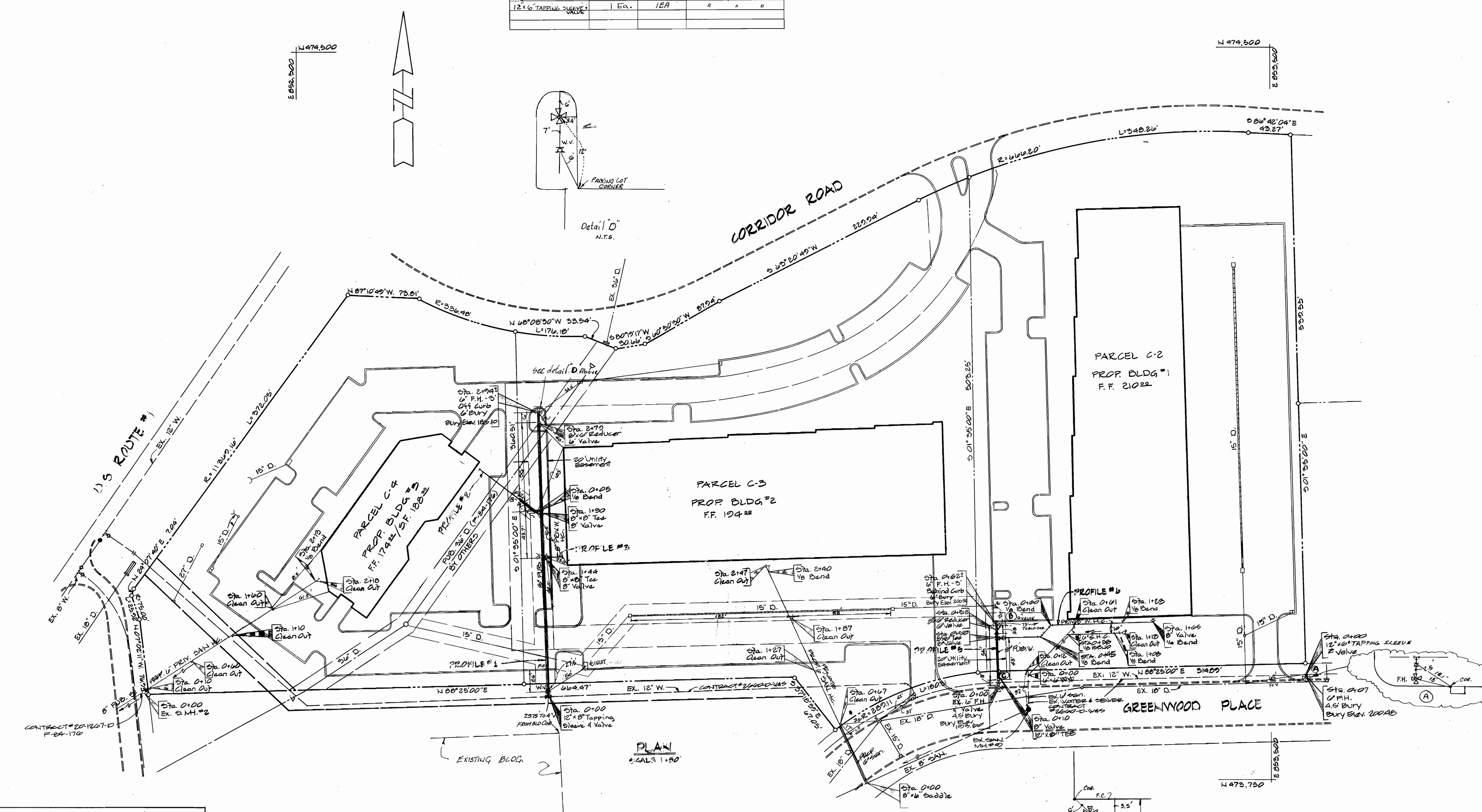
PLAN & PROFILE  
FOR  
WATER MAIN & SEWER MAIN  
CONTRACT NO.:  
24-1320-D

CORRIDOR INDUSTRIAL PARK  
SECTION 1 PARCEL C-2, C-3, & C-4  
ELECTION DISTRICT 6  
HOWARD COUNTY, MARYLAND  
OCTOBER 23, 1984

SCALE AS SHOWN

SHEET 1 OF 2

ITEM	QUANTITIES		MATERIAL/SUPPLIER
	ESTIMATED	AS-BUILT	
8" Water	355 L.F.	320 L.F.	ATLANTIC STATES/A-1 SUPPLIER
6" Water	23 L.F.	22 L.F.	" " " "
6" Fire Hydrant	3 Ea.	3 EA	MUELLER/A-1 SUPPLIER
12" x 6" TAPPING SLEEVE	1 Ea.	1 EA	" " " "
6" Sewer	65 L.F.	65 L.F.	ATLANTIC STATES/A-1 SUPPLIER
8" x 6" Saddle (San)	1 Ea.	1 EA	TUYER PIPE/A-1 SUPPLIER
8" VALVE	3 Ea.	3 EA	MUELLER/A-1 SUPPLIER
12" x 6" TAPPING SLEEVE VALVE	1 Ea.	1 EA	" " " "



REVIEWED FOR HOWARD SOIL CONSERVATION DISTRICT AND MEETS TECHNICAL REQUIREMENTS.  
*James Mottelm* 1-29-85  
 SIGNATURE DATE  
 U.S. SOIL CONSERVATION SERVICE

This Development Plan is approved for Soil Erosion and Sediment Control by the Howard Soil Conservation District?  
 APPROVED:  
*Stephen L. Hulsh* 1/29/85  
 CHIEF, LAND DEVELOPMENT DIVISION, DEPT. OF PUBLIC WORKS

Sediment Control Measures For This Contract Will Be Implemented In Accordance With Article 13 & SDP 85-13 Of The Standard Specifications.

DEPARTMENT OF PUBLIC WORKS  
 HOWARD COUNTY, MARYLAND  
*John E. Neume* 1-29-85  
 DIRECTOR OF PUBLIC WORKS DATE  
*William E. Sida* 1-29-85  
 CHIEF, BUREAU OF ENGINEERING DATE

GEORGE WILLIAM STEPHENS, JR. AND ASSOCIATES  
 303 ALLEGHENY AVE.  
 TOWSON, MARYLAND 21204  
 823-8120

DES: R.W.R.	1	10-84
DRN: D.R.R.		
CHK: R.W.R./a		
DATE: 10-84		

PLAN & PROFILE FOR WATER MAIN & SEWER MAIN  
 CONTRACT NO: 24-1320-D  
 60' SCALE MAP NO. 474-42 BLOCK NO. \_\_\_\_\_

CORRIDOR INDUSTRIAL PARK SECTION 1 PARCEL C-2, C-3, & C-4  
 ELECTION DISTRICT 6  
 HOWARD COUNTY, MARYLAND  
 OCTOBER 23, 1984

SCALE AS SHOWN  
 SHEET 2 OF 2