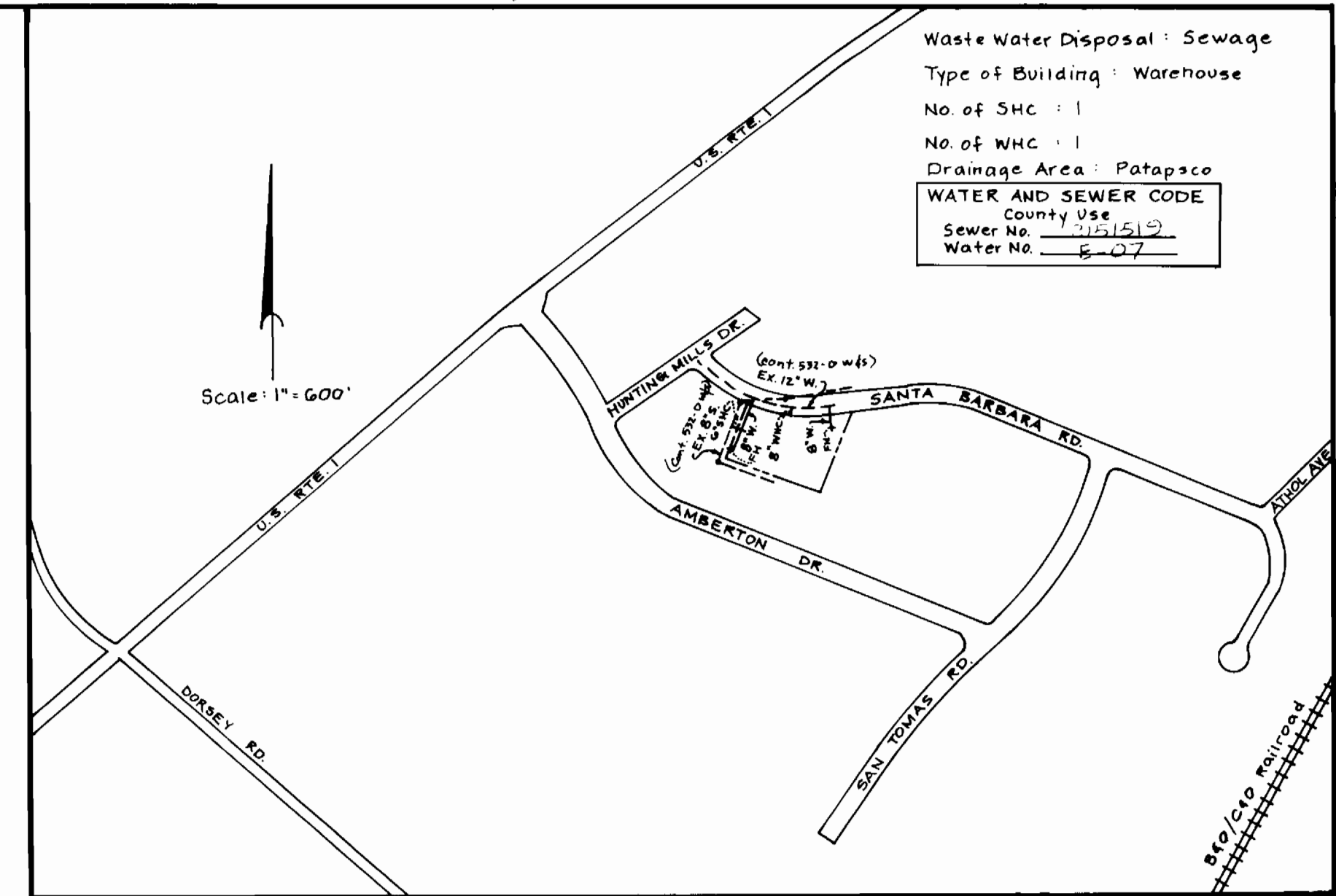


Route One Hundred Business Park  
Block A Parcel B  
P.B. 25 F. 17

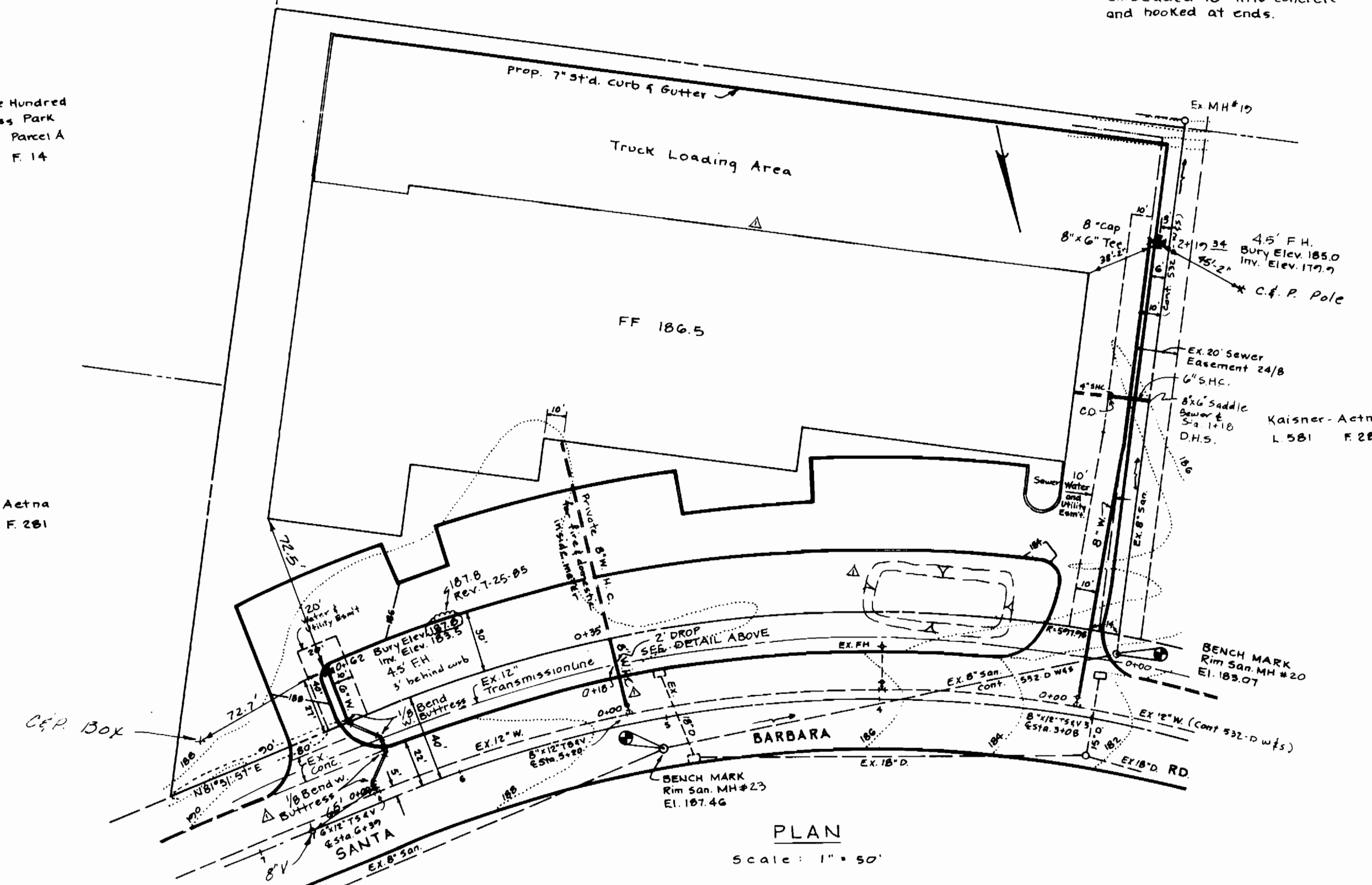
See Ho Co. Std  
W 222 for  
Reference.



LOCATION MAP  
SCALE: 1" = 600'

Route One Hundred  
Business Park  
Block A Parcel A  
P.B. 24 F. 14

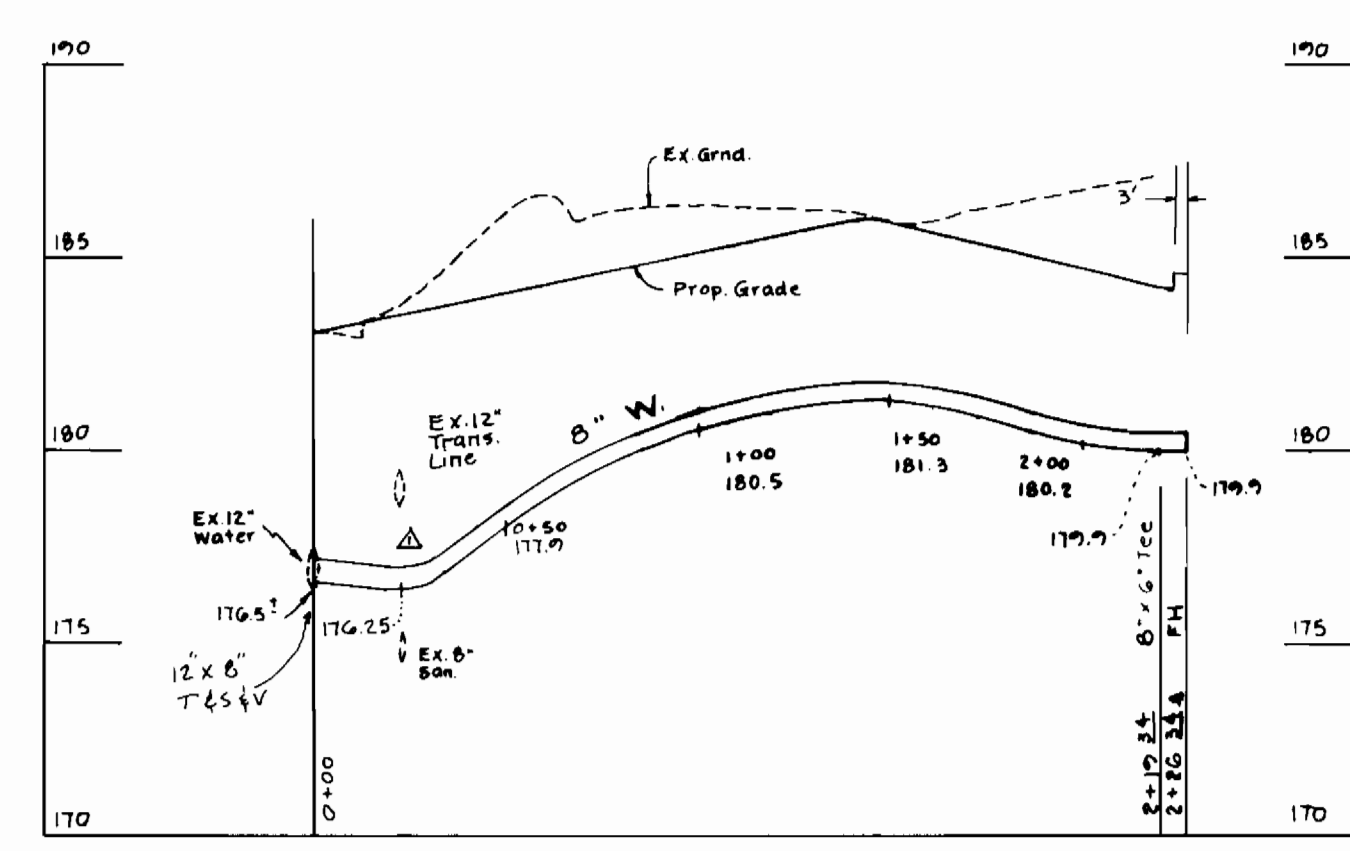
Kaiser-Actna  
L 581 F. 281



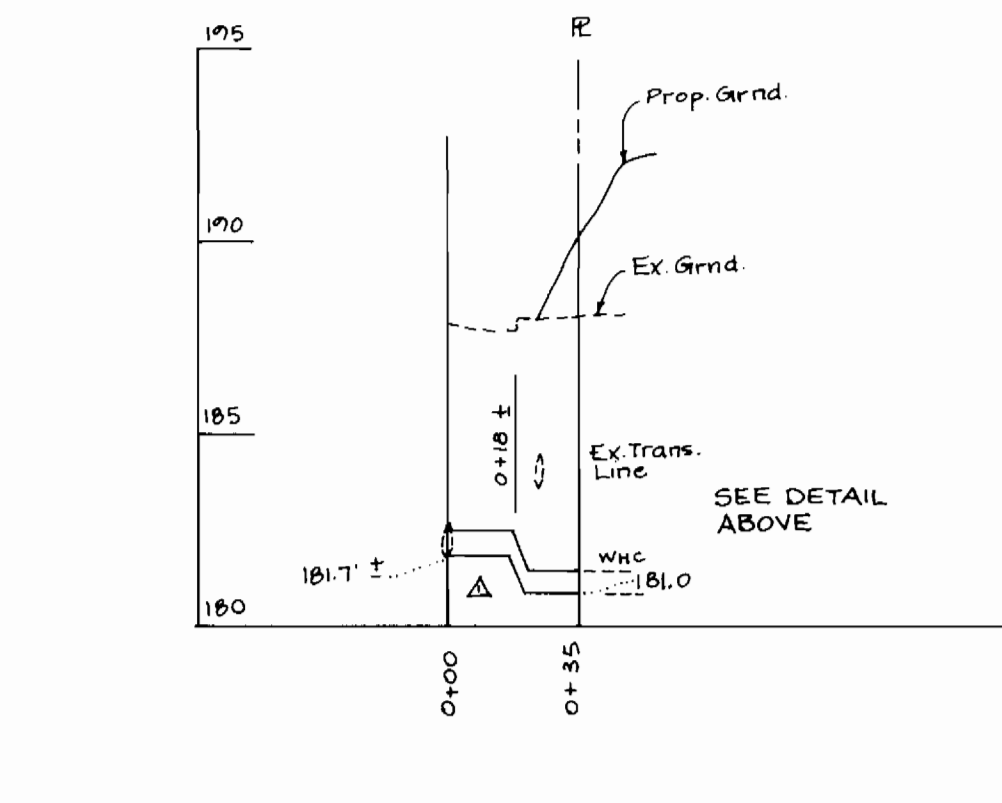
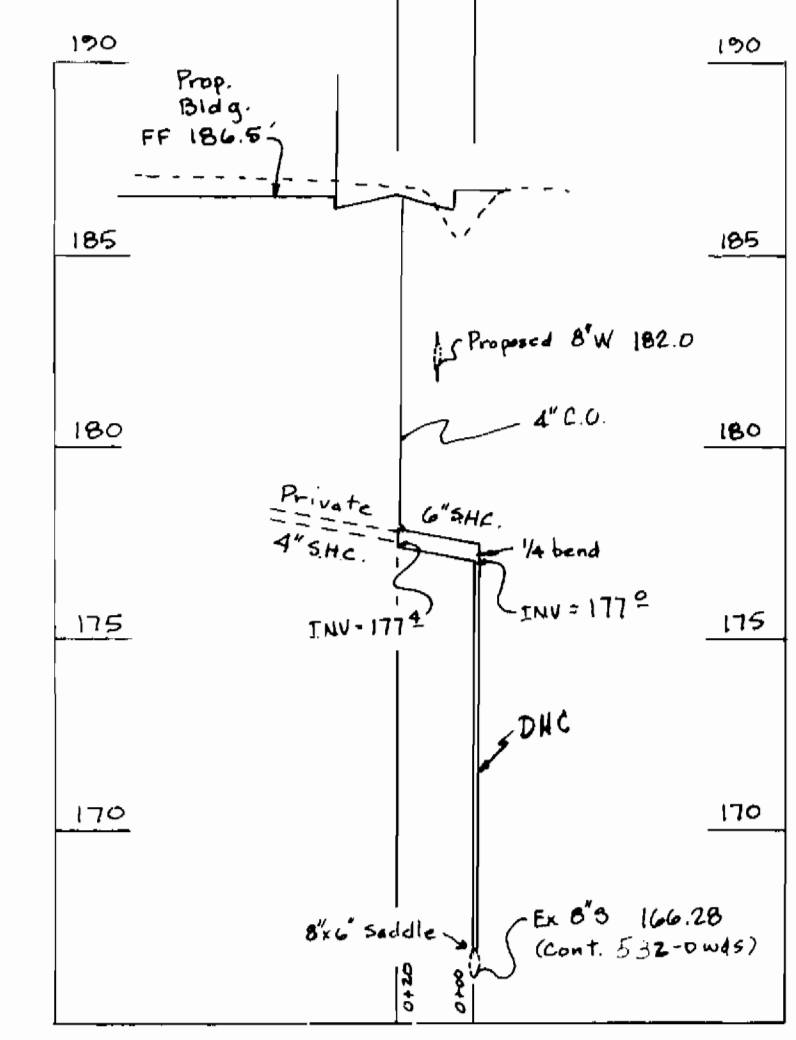
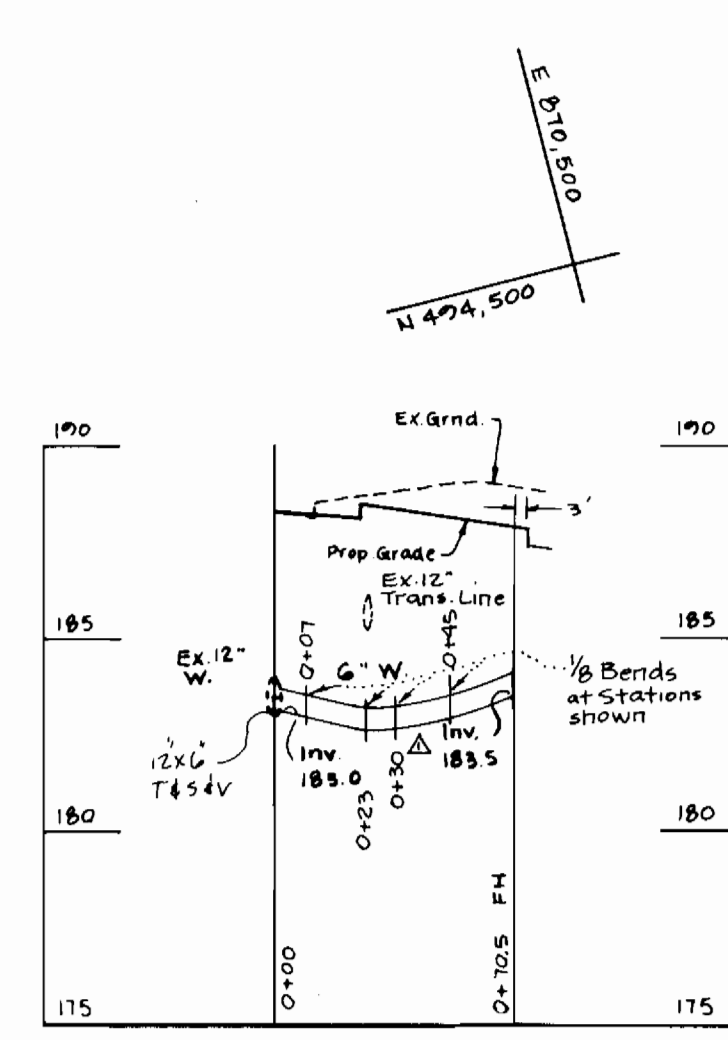
PLAN  
Scale: 1" = 50'

**GENERAL NOTES:**

1. Approx. location of existing mains are shown. The contractor shall take all necessary precautions to protect exist. mains and services and maintain uninterrupted supply. Any damage incurred shall be repaired immediately to the satisfaction of the Engineer, at the Contractor's expense.
2. All horizontal controls are based on Md. State Coordinates.
3. All vertical controls are based on U.S.G.S. Datum.
4. All pipe elevations shown are invert elevations.
5. Clear all utilities by a minimum of 6". Clear all poles by 2'-0" min. or tunnel as reqd. Any cost incurred to the Contractor for tunneling or bracing at poles shall be included in unit prices bid for excavation and backfill.
6. For details not shown on dwg., use Howard Co. Std. Details.
7. For materials and construction methods use Howard Co. Std. Specifications.
8. Contractor shall locate existing utilities a min. of 2 weeks in advance of construction operations in the vicinity of proposed utilities at his own expense.
9. The contractor shall notify the following utilities or agencies atleast five working days before starting work shown on these plans:
  - State Highway Admin. 531-5533
  - Baltimore Gas & Elect. Co. Underground Elect. Dist. Cust. Service 685-0123
  - Baltimore Gas & Elect. Co. Underground Gas Dist. Cust. Service 685-0123
  - Engineering Damage Control 284-5621
  - Mass Utility 507-0100
  - C&P Telephone Co. 725-7776
  - AT&T Cable Loc. Div. 599-2553
  - Colonial Pipeline Co. 781-4641
  - Bureau of Utilities Ho Co. 792-2366
10. Place regulation 'Men Working' and Warning signs as reqd. to comply with Md. SHA Manual of Traffic Control for Highway Construction and Maintenance Operations.
11. All water mains to be C.I.P. or D.I.R. unless otherwise directed.
12. Top of all water mains to have a min. of 3 1/2' cover unless otherwise directed.
13. Valves adjacent to tees shall be strapped to tees.
14. Block all fittings with concrete.
15. Bury line elev's. on fire hydrants shall be set to the elev's. shown on the dwg's. All fire hydrants shall be strapped and buttressed with concrete in accordance with Std. Details. Soil around the fire hydrant to be compact in accordance with Sect. 100B & Sect. 1003 of the Std. Specifications.
16. All water house connections shall be for an inside meter setting.
17. The contractor shall not operate any water main valves on the exist. system.

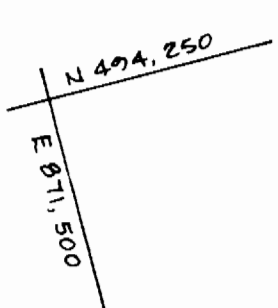


PROFILE  
Scale: Horiz. 1" = 50'  
Vert. 1" = 5'



**QUANTITIES**

Item	Estimated	As-Built	Mat./Supplier
6" Water	69 L.F.	69 L.F.	BRIDGEMAN PIPE
6" Valves	1 ea.	1 ea.	MUNICIPAL CONT.
6" F.H.	2 ea.	2 ea.	MUNICIPAL CONT.
6" x 12" Tee Slings	1 ea.	1 ea.	BRIDGEMAN PIPE
6" Water	255 L.F.	255 L.F.	BRIDGEMAN PIPE
6" Valves	2 ea.	2 ea.	MUNICIPAL CONT.
6" x 12" Tee Slings	2 ea.	2 ea.	BRIDGEMAN PIPE
6" Saver	50 L.F.	50 L.F.	RYE CANTARY TUBS
6" x 12" Tee Slings	1 ea.	1 ea.	MUNICIPAL CONT.
6" x 12" Tee Slings	1 ea.	1 ea.	MUNICIPAL CONT.
6" x 12" Tee Slings	1 ea.	1 ea.	MUNICIPAL CONT.



Sediment Control Measures for this contract will be implemented in accordance with Sect. 15 of the Specifications & SDP-B5-45

REVIEWED FOR HOWARD SOIL CONSERVATION DISTRICT AND MEETS TECHNICAL REQUIREMENT

Signature: *[Signature]* Date: 1/3/85

U.S. SOIL CONSERVATION SERVICE

THIS DEVELOPMENT PLAN IS APPROVED FOR SOIL EROSION AND SEDIMENT CONTROL BY THE HOWARD COUNTY CONSERVATION DISTRICT.

APPROVED: *[Signature]* Date: 1/3/85

HOWARD SCD.

DEPARTMENT OF PUBLIC WORKS  
HOWARD COUNTY, MARYLAND

*[Signature]* 1-10-85  
Director of Public Works Date

*[Signature]* Chief Bureau of Engineering Date

*[Signature]* 1-9-85  
Chief Land Development Div. Date

*H.E. Vennard*

NO.	BY	REVISION	DATE
1	MK	Changes to lower water line, misc. rev's.	8-2-85
2	BY	REVISION	

CONTRACT NO. 24-1315-D

PLAN & PROFILE  
WATER MAIN

**ROUTE ONE HUNDRED BUSINESS PARK**  
BLOCK 'A'  
1st ELECTION DISTRICT  
PARCEL 'D'  
HOWARD COUNTY, MARYLAND

DRAWING NO. 1 OF 1  
SCALE As Shown

AS BUILT 10/1/85