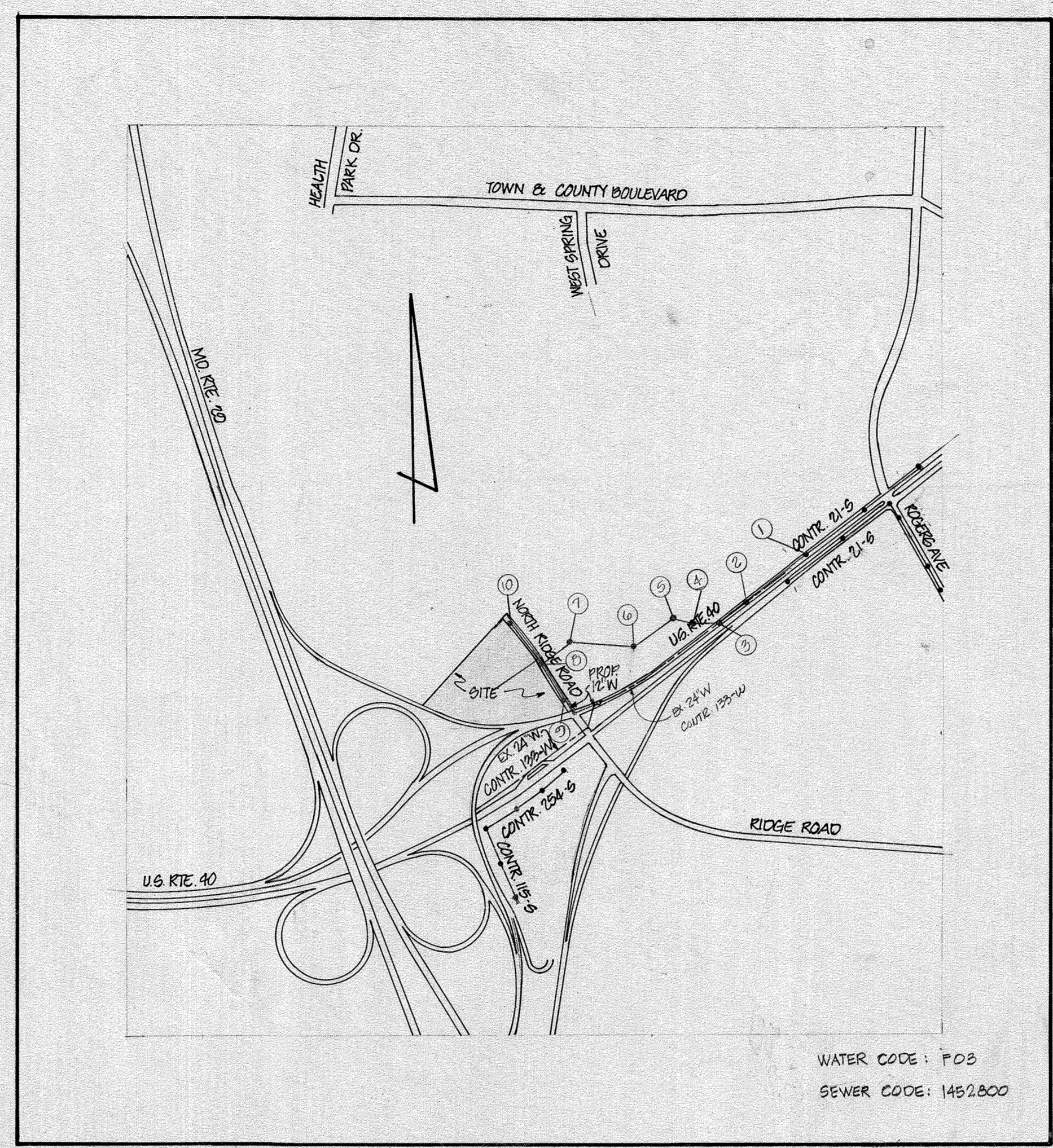


TYPE OF BUILDING	OFFICE BLDG.
NUMBER OF LOTS	1
NUMBER OF SHC'S	2
NUMBER OF WHC'S	2
DRAINAGE AREA	PATAPSCO

GENERAL NOTES

- APPROXIMATE LOCATION OF EXISTING MAINS ARE SHOWN. THE CONTRACTOR SHALL TAKE ALL NECESSARY PRECAUTIONS TO PROTECT EXISTING MAINS AND SERVICES AND MAINTAIN UNINTERRUPTED SUPPLY. ANY DAMAGE INCURRED SHALL BE REPAIRED IMMEDIATELY TO THE SATISFACTION OF THE ENGINEER, AT THE CONTRACTOR'S EXPENSE.
- ALL HORIZONTAL CONTROLS ARE BASED ON MARYLAND STATE COORDINATES.
- ALL VERTICAL CONTROLS ARE BASED ON U.S.G.S. DATUM.
- ALL PIPE ELEVATIONS SHOWN ARE INVERT ELEVATIONS.
- CLEAR ALL MINIMUM OF 6'. CLEAR ALL POLES BY 2'-0" MINIMUM OR TUNNEL AS REQUIRED. ANY COST INCURRED TO THE CONTRACTOR FOR TUNNELING OR BRACING AT POLES SHALL BE INCLUDED IN UNIT PRICES BID FOR EXCAVATION AND BACKFILL.
- FOR DETAILS NOT SHOWN ON THE DRAWINGS USE HOWARD COUNTY STANDARD DETAILS.
- FOR MATERIALS AND CONSTRUCTION METHODS USE HOWARD COUNTY STANDARD SPECIFICATIONS.
- CONTRACTOR SHALL LOCATE EXISTING UTILITIES A MINIMUM OF TWO (2) WEEKS IN ADVANCE OF CONSTRUCTION OPERATIONS IN THE VICINITY OF PROPOSED UTILITIES AT HIS OWN EXPENSE.
- CONTRACTOR SHALL NOTIFY THE FOLLOWING UTILITIES OR AGENCIES AT LEAST FIVE (5) WORKING DAYS BEFORE STARTING WORK SHOWN ON THESE PLANS:
 - STATE HIGHWAY ADMINISTRATION - 591-5998
 - BALTO GAS & ELECTRIC CO. - UNDERGROUND ELECTRIC DISTRIBUTION CUSTOMER SERVICE - 689-0129
 - BALTO GAS & ELECTRIC CO. - UNDERGROUND GAS DISTRIBUTION CUSTOMER SERVICE - 689-0129
 - ENGINEERING - "DAMAGE CONTROL" - 284-5621
 - "MIS UTILITY" - 1-580-0100
 - CHESAPEAKE & POTOMAC (C&P) TELEPHONE CO. - 725-0976
 - AMERICAN TELEPHONE AND TELEGRAPH - CABLE LOCATION DIVISION - 909-9559
 - COLONIAL PIPELINE CO. - 701-4641
 - BUREAU OF UTILITIES HOWARD COUNTY - 902-2366
- TREES ARE TO BE PROTECTED FROM DAMAGE TO MAXIMUM EXTENT. TREES LOCATED WITHIN THE CONSTRUCTION STRIP ARE NOT TO BE REMOVED OR DAMAGED BY THE CONTRACTOR.
- CONTRACTOR SHALL REMOVE TREES, STUMPS AND ROOTS ALONG LINE OF EXCAVATION AS DIRECTED BY THE ENGINEER. PAYMENT FOR SUCH REMOVAL SHALL BE INCLUDED IN THE UNIT PRICE BID FOR EXCAVATION AND BACKFILL.
- PLACE REGULATION "MEN WORKING" AND WARNING SIGNS AS REQUIRED TO COMPLY WITH MARYLAND STATE HIGHWAY ADMINISTRATION MANUAL OF TRAFFIC CONTROL FOR HIGHWAY CONSTRUCTION AND MAINTENANCE OPERATIONS.
- ALL WATER MAINS TO BE C.I.P. OR D.I.P. UNLESS OTHERWISE NOTED.
- TOP OF ALL WATER MAINS TO HAVE A MINIMUM OF 3/4" COVER UNLESS OTHERWISE NOTED.
- VALVES ADJACENT TO TREES SHALL BE STRAPPED TO TREES.
- BLOCK ALL FITTINGS WITH CONCRETE.
- BURY LINE ELEVATIONS ON FIRE HYDRANTS SHALL BE SET TO THE ELEVATIONS SHOWN ON THE DRAWINGS. ALL FIRE HYDRANTS SHALL BE STRAPPED AND BUTTRESSED WITH CONCRETE IN ACCORDANCE WITH STANDARD DETAILS. 60L AROUND THE FIRE HYDRANT TO BE COMPACTED IN ACCORDANCE WITH SECTIONS 10.03 AND 10.08 OF THE STANDARD SPECIFICATIONS.
- ALL WATER HOUSE CONNECTIONS SHALL BE FOR AN INSIDE METER SETTING.
- THE CONTRACTOR SHALL NOT OPERATE ANY WATER MAIN VALVES ON THE EXISTING SYSTEM.
- ALL SEWER MAINS SHALL BE C.I.P., V.C.P.X. OR A.C.P. CLASS 2400 UNLESS OTHERWISE NOTED.
- THE CONTRACTOR SHALL PROVIDE A JOINT IN ALL SEWER MAINS WITHIN 2'-0" OF EXTERIOR MANHOLE WALL.
- ALL MANHOLES SHALL BE 4'-0" INSIDE DIAMETER, UNLESS OTHERWISE NOTED.
- MANHOLES SHOWN WITH 12" AND 16" WALLS ARE BRICK MANHOLES ONLY.
- MANHOLES DESIGNATED W.T. IN PLAN AND PROFILE SHALL HAVE WATERTIGHT FRAME AND COVERS, STANDARD DETAIL G-5.92. WHERE WATERTIGHT MANHOLE FRAME AND COVER IS USED, SET TOP OF FRAME 1'-6" ABOVE FINISHED GRADE.
- HOUSE(S) WITH THE SYMBOL "C.N.S." INDICATES THAT CELLAR CAN NOT BE SERVED.



VICINITY MAP
SCALE: 1"=600'

QUANTITIES			
ITEM	ESTIMD	AS BUILT	MATERIAL / SUPPLIER
1	5"Ø	2139 LF	2139 LF BELLAIR ROAD SUP.
2	10"Ø	988 LF	988 LF GRIFFIN
3	8"Ø	305 LF	305 LF "
4	6"Ø	106 LF	106 LF "
5	6"Ø	48 LF	48 LF BELLAIR ROAD SUP.
6	12" V	1	" " " "
7	F.HYO	4	" " " "
8	8" V	3	" " " "
9	24" X 12" TAPPING SLEEVE & VALVE	1	" " " "

SEDIMENT CONTROL MEASURES WILL BE IMPLEMENTED IN ACCORDANCE WITH ARTICLE NO. 15 OF THE SPECIFICATIONS & WITH F-05-57. SEDIMENT & EROSION CONTROL AND AS SHOWN ON THESE PLANS.

REVIEWED FOR HOWARD SOIL CONSERVATION DISTRICT AND MEETS TECHNICAL REQUIREMENT.

Jane M. Nelson 2/4/85
DATE
U.S. SOIL CONSERVATION SERVICE

THIS DEVELOPMENT PLAN IS APPROVED FOR SOIL EROSION AND SEDIMENT CONTROL BY THE HOWARD SOIL CONSERVATION DISTRICT.

APPROVED:
Stephen J. Fisher 2/4/85
HOWARD S.C.D. DATE

HOWARD COUNTY EXECUTIVE CENTER
PARCELS A, B AND C

DEPARTMENT OF PUBLIC WORKS
HOWARD COUNTY, MARYLAND

Sheryl F. Norman 2/11/85
DIRECTOR OF PUBLIC WORKS DATE

William J. ... 2/11/85
CHIEF, BUREAU OF ENGINEERING DATE

R. M. ... 2/11/85
CHIEF, BUREAU OF UTILITIES DATE

William J. ... 2/11/85
CHIEF, LAND DEVELOPMENT DIV. DATE

BOENDER ASSOCIATES, INC.
ENGINEERS - PLANNERS - SURVEYORS

3665 ELLICOTT MILLS DRIVE
ELLICOTT CITY, MARYLAND 21043

(301) 465-7777



DES: JJB				
DRN: O.M.P.				
CHK: RDM				
DATE: OCT, 1984	BY	NO.	REVISION	DATE

TITLE SHEET

600' SCALE MAP NO. 24 BLOCK NO. 6

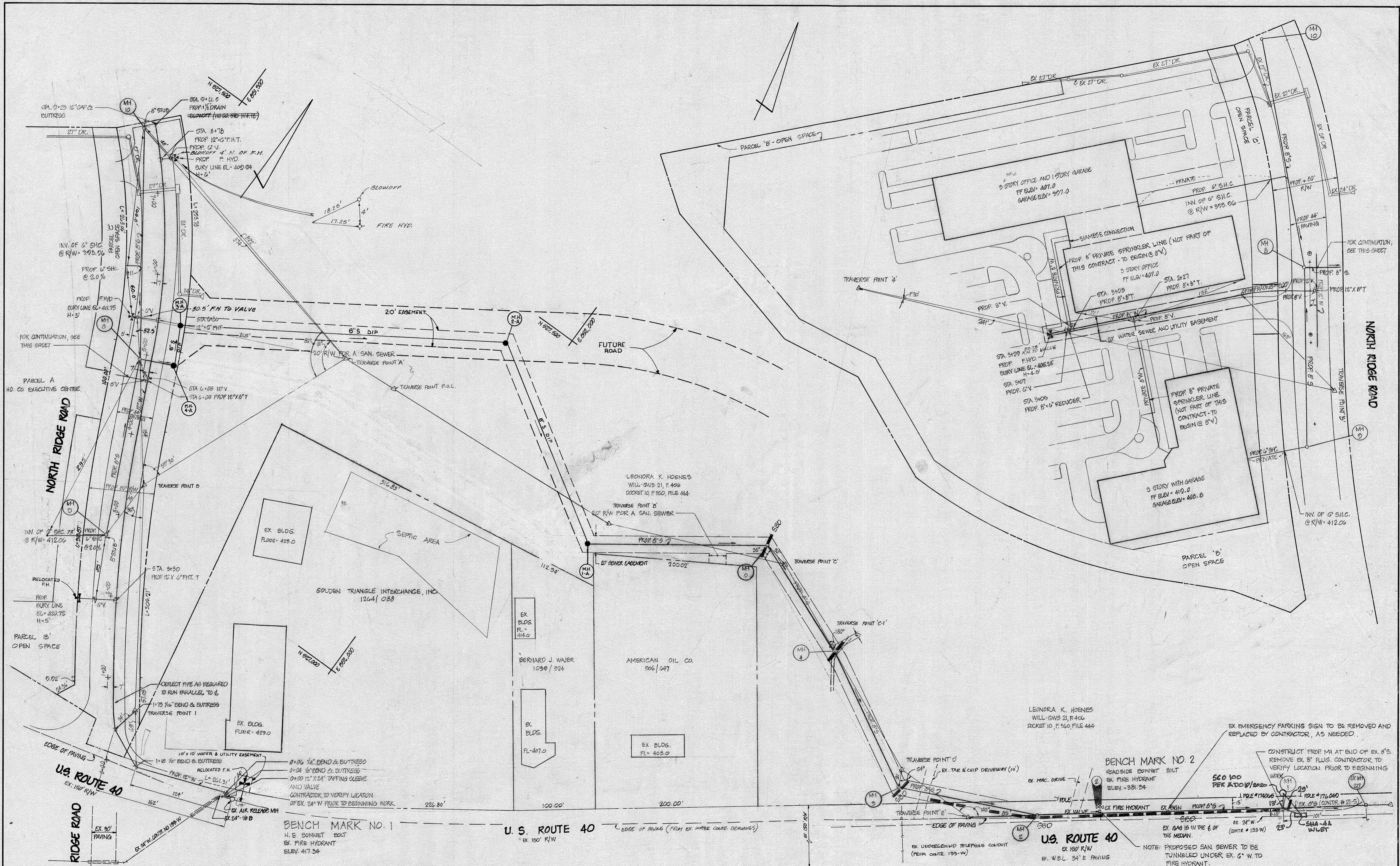
HOWARD COUNTY EXECUTIVE CENTER

2ND ELECTION DISTRICT

CONTRACT NO. - 14-1309-D

SCALE
1"=600'

SHEET
1 OF 3



DEPARTMENT OF PUBLIC WORKS
 HOWARD COUNTY, MARYLAND

Robert M. Benning 2-11-85
 DIRECTOR OF PUBLIC WORKS DATE

Richard M. Benning 2-11-85
 CHIEF, BUREAU OF UTILITIES DATE

William S. Kelly 2-11-85
 CHIEF, BUREAU OF ENGINEERING DATE

William S. Kelly 2-11-85
 CHIEF, LAND DEVELOPMENT DIV. DATE

BOENDER ASSOCIATES, INC.
 ENGINEERS · PLANNERS · SURVEYORS

3565 ELLICOTT MILLS DRIVE
 ELLICOTT CITY, MARYLAND 21043
 (301) 465-7777



DES: JJB	RCJ	1	REVISE MH-1A TO EXIST MH 8	5-86
DRN: DMP				
CHK: RDM				
DATE: OCT. 1984	BY: NO		REVISION	DATE

PLAN

HOWARD COUNTY EXECUTIVE CENTER

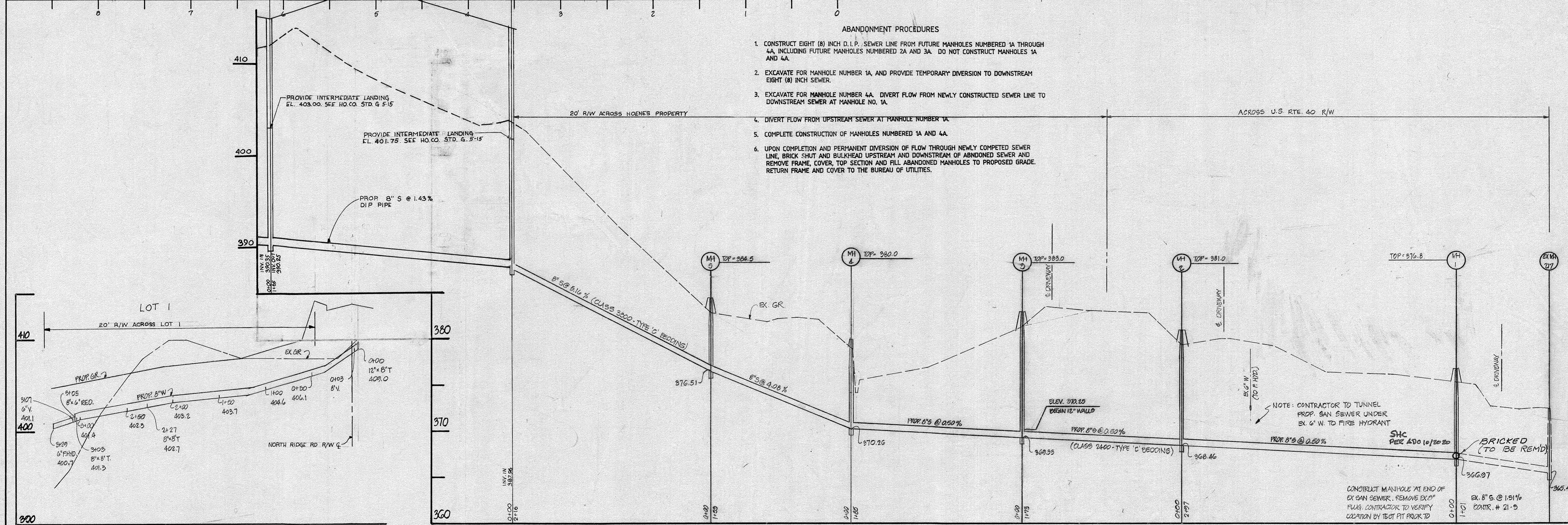
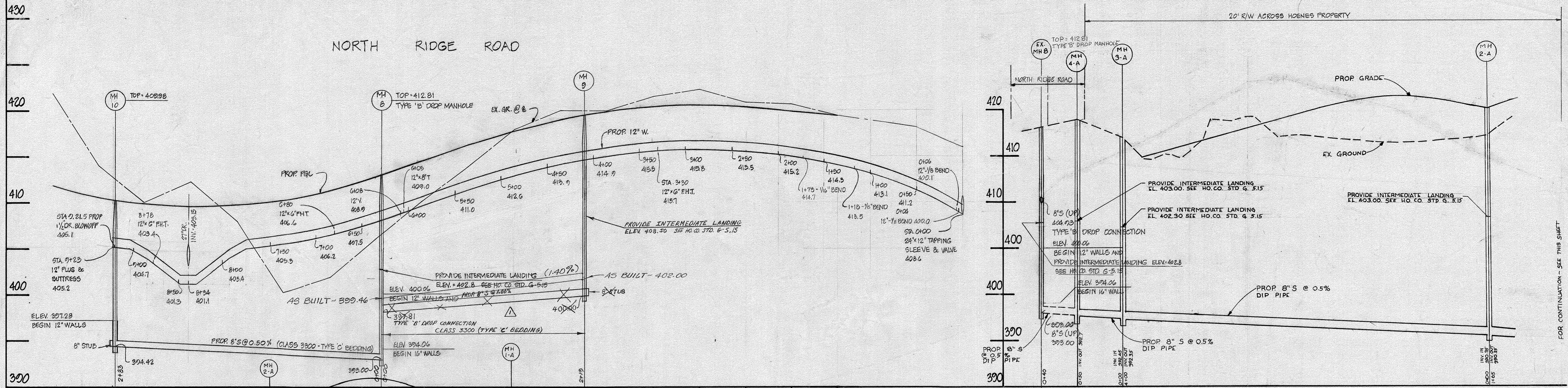
2ND ELECTION DISTRICT

CONTRACT NO. 14-1309-D

SCALE: 1" = 50'

SHEET: 2 OF 3

AS BUILT 8/5/85



- ABANDONMENT PROCEDURES**
1. CONSTRUCT EIGHT (8) INCH D.I.P. SEWER LINE FROM FUTURE MANHOLES NUMBERED 1A THROUGH 4A, INCLUDING FUTURE MANHOLES NUMBERED 2A AND 3A. DO NOT CONSTRUCT MANHOLES 1A AND 4A.
 2. EXCAVATE FOR MANHOLE NUMBER 1A, AND PROVIDE TEMPORARY DIVERSION TO DOWNSTREAM EIGHT (8) INCH SEWER.
 3. EXCAVATE FOR MANHOLE NUMBER 4A. DIVERT FLOW FROM NEWLY CONSTRUCTED SEWER LINE TO DOWNSTREAM SEWER AT MANHOLE NO. 1A.
 4. DIVERT FLOW FROM UPSTREAM SEWER AT MANHOLE NUMBER 1A.
 5. COMPLETE CONSTRUCTION OF MANHOLES NUMBERED 1A AND 4A.
 6. UPON COMPLETION AND PERMANENT DIVERSION OF FLOW THROUGH NEWLY COMPLETED SEWER LINE, BRICK SHUT AND BULKHEAD UPSTREAM AND DOWNSTREAM OF ABANDONED SEWER AND REMOVE FRAME, COVER, TOP SECTION AND FILL ABANDONED MANHOLES TO PROPOSED GRADE. RETURN FRAME AND COVER TO THE BUREAU OF UTILITIES.

DEPARTMENT OF PUBLIC WORKS
 HOWARD COUNTY, MARYLAND

George F. Nemes
 DIRECTOR OF PUBLIC WORKS

Robert M. Beiner
 CHIEF, BUREAU OF UTILITIES

DATE: 2-11-85

Rayley
 CHIEF, BUREAU OF ENGINEERING

DATE: 2/11/85

McCall
 CHIEF, LAND DEVELOPMENT DIV.

DATE: 2/11/85

BOENDER ASSOCIATES, INC.
 ENGINEERS-PLANNERS-SURVEYORS

3565 ELLICOTT MILLS DRIVE
 ELLICOTT CITY, MARYLAND 21043
 (301) 465-7777

Thomas J. Boender
 PROFESSIONAL ENGINEER

DES: JJB	KSK	REVISOR	7/9/85
DRN: DMP/JJB	RCJ	2	5/25/82
CHK: K.D.M.			
DATE: OCT. 1984	BY	NO	REVISION

PROFILES

HOWARD COUNTY EXECUTIVE CENTER

2ND ELECTION DISTRICT

CONTRACT NO. 14-1309-D

SCALE: HORIZ. 1"=50'
 VERT. 1"=5'

SHEET 2 OF 3

A5 BUILT 8/5/85