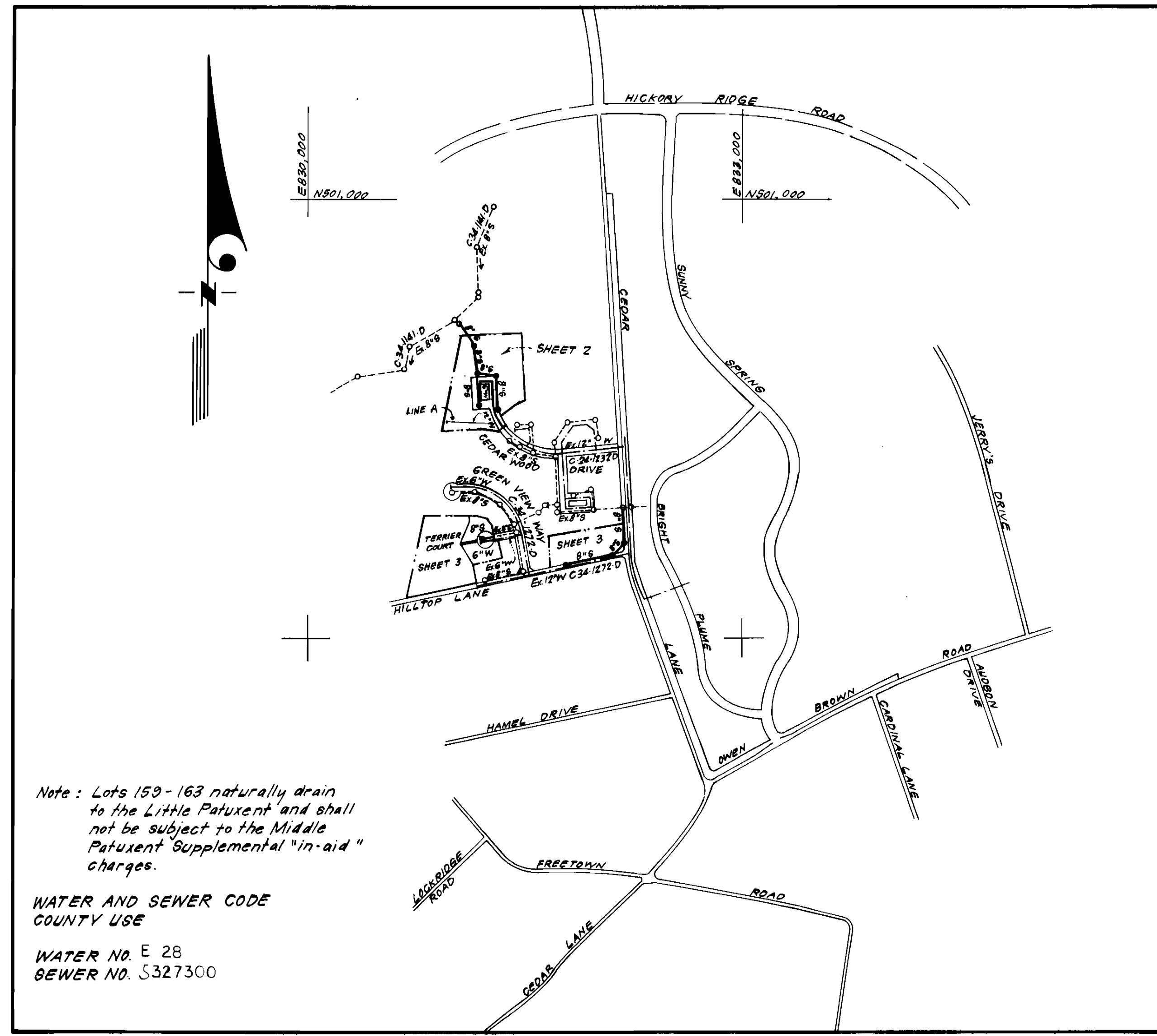


ELEVATIONS (SEE NOTE, THIS SHEET.)

LOTS	SHC Inv. @ R	Min. Cellar
A1/A2	422.28	425.4
A3/A4	421.60	424.7
A5/A6	421.90	425.0
A7/A8	420.62	423.7
A9/A10	417.50	420.6
A11/A12	415.16	418.3
A13/A14	411.48	414.6
A15/A16	411.20	414.3
A17/A18	413.94	417.0
A19/A20	417.83	420.9
A21/A22	418.90	422.0
A23/A24	419.74	422.8
A25/A26	421.06	424.2
A27/A28	422.53	425.6
A29/A30	423.81	426.9
A31/A32	426.08	429.2
A33/A34	426.96	430.1

NOTE: Minimum Cellar Elevations were computed using a typical house location on lot. Sewerability should be checked with actual house location at time of site plan preparation.

TYPE OF BUILDINGS	32 Townhouses, 2 Duplex & 11 Single Family
NUMBER OF LOTS	45
NUMBER OF WHC'S	45
NUMBER OF SHC'S	45
DRAINAGE AREA	Middle Patuxent



Note: Lots 159-163 naturally drain to the Little Patuxent and shall not be subject to the Middle Patuxent Supplemental "in-aid" charges.

WATER AND SEWER CODE COUNTY USE

WATER No. E 28
SEWER No. S327300

VICINITY MAP

GENERAL NOTES

- Approximate location of existing mains are shown. The contractor shall take all necessary precautions to protect existing mains and services and maintain uninterrupted supply. Any damage incurred shall be repaired immediately to the satisfaction of the Inspector, at the contractor's expense.
- All horizontal controls are based on Maryland State Coordinates.
- All vertical controls are based on U.S.G.S. Datum.
- All pipe elevations shown are invert elevations.
- Clear all utilities by a minimum of 6" clear all poles by 2'-0" minimum or tunnel as required. Any cost incurred to the contractor for tunneling or bracing at poles shall be included in unit prices bid for excavation and backfill.
- For details not shown on the drawings use Howard County Standard Details.
- For materials and construction methods use Howard County Standard Specifications # Ho Co. 2000.
- Contractor shall locate existing utilities a minimum of two (2) weeks in advance of construction operations in the vicinity of proposed utilities at his own expense.
- Contractor shall notify the following utilities or agencies at least five (5) working days before starting work shown on these plans.
 - State Highway Administration - 531-5533
 - Baltimore Gas & Electric Company - Contractor Services - 561-2585
 - Baltimore Gas & Electric Company - Underground Damage Control - 234-5621
 - Baltimore Gas & Electric Company - Trouble Shooting - 288-9013
 - "Miss Utility" - 1-559-0100
 - Chesapeake & Potomac (C & P) Telephone Company - 725-9976
 - Colonial Pipeline Company - 795-1390
 - Bureau of Utilities Howard County - 992-2366
- Trees are to be protected from damage to maximum extent. Trees located within the construction strip are not to be removed or damaged by the contractor.
- Contractor shall remove trees, stumps, and roots along line of excavation as directed by the Inspector. Payment for such removal shall be included in the unit price bid for excavation and backfill.
- Place regulation "Men Working" and warning signs as required to comply with Maryland State Highway Administration Manual of Traffic Control for Highway Construction and Maintenance Operations.
- All water mains to be or D.I.P. unless otherwise noted.
- Top of all water mains to have a minimum of 3'-1/2' cover unless otherwise noted.
- Valves adjacent to tees shall be strapped to tees.
- Block all fittings with concrete.
- Bury line elevations on fire hydrants shall be set to the elevations shown on the drawings. All fire hydrants shall be strapped and buttressed with concrete in accordance with standard details. Soil around the fire hydrant to be compacted in accordance with Section 10.03 of the Standard Specifications.
- All water house connections shall be for an inside meter setting.
- The contractor shall not operate any water main valves on the existing system.
- All sewer mains shall be C.S.P.X., V.C.P.X., P.V.C., or A.C.P. Class 2400 unless otherwise noted.
- The contractor shall provide a joint in all sewer mains within 2'-0" of exterior manhole wall.
- All manholes shall be 4'-0" inside diameter, unless otherwise noted.
- Water main and water house connection lines must have a minimum of one foot separation from the sanitary sewer and sewer house connections as they cross. Except at crossings, water and sewer lines shall have a minimum horizontal separation of 10'.
- For all Copper Water House Connections, utilize flared type fittings only.
- 12" Wall thickness shown on MH 109 applies only if manhole is to be brick.

CONTRACT NO. 34-1299-D

**CEDAR ACRES, SECTION THREE
HOWARD COUNTY, MARYLAND
DEPARTMENT OF PUBLIC WORKS**

Sediment Control Measures will be implemented in accordance with Article No. 15 of the Specifications B with Road Construction Plan F. 85-55; Drawings S & 6, Sediment & Erosion Control.

REVIEWED FOR HOWARD SOIL CONSERVATION DISTRICT AND MEETS TECHNICAL REQUIREMENT.
Signature: [Signature] DATE: 1-31-85

US. SOIL CONSERVATION SERVICE
This Development Plan is approved for Soil Erosion and Sediment Control by the Howard Soil Conservation District.

APPROVED: [Signature] DATE: 1/31/85
Howard S.C.D.

QUANTITIES			
ITEM	ESTIMATED	AS BUILT	MATERIAL / SUPPLIER
2" S	1699 LF	1699.55	WATERWORKS, INC., FINKSBURG, MD.
12" W	694 LF	694	APP WATER & SEWER SUPPLIES INC. FAIRFAX, VA.
6" W	525 LF	520	APP WATER & SEWER SUPPLIES INC. FAIRFAX, VA.
4" MH	9 EA.	9	ATLANTIC PRECAST CONCRETE CORP.
F.H.	1 EA.	1	MUNICIPAL CONTRACTOR SALES, INC., FINKSBURG, MD.
12" V	1 EA.	1	MUNICIPAL CONTRACTOR SALES, INC., FINKSBURG, MD.
6" V (Bld. FHV)	1 EA.	1	MUNICIPAL CONTRACTOR SALES, INC., FINKSBURG, MD.
14" Drain	2 EA.	2	MUNICIPAL CONTRACTOR SALES, INC., FINKSBURG, MD.
6" SHC	898 LF	951	WATERWORKS, INC., FINKSBURG, MD.
34" WHC	1007 LF	1170.5	MUNICIPAL CONTRACTOR SALES, INC., FINKSBURG, MD.
1" WHC	505 LF	478.9	MUNICIPAL CONTRACTOR SALES, INC., FINKSBURG, MD.

AS BUILT

DEPARTMENT OF PUBLIC WORKS
HOWARD COUNTY, MARYLAND

[Signature] 11-23-84
DIRECTOR OF PUBLIC WORKS DATE

[Signature] 11-21-84
CHIEF, BUREAU OF UTILITIES DATE

CLARK - FINEFROCK & SACKETT
ENGINEERS - PLANNERS - SURVEYORS

11315 LOCKWOOD DRIVE SILVER SPRING, MARYLAND 20904
(301) 593-3400



DES: C.K.G.			
DRN: V.L.B.			
CHK: C.K.G.	BAL 2	Resubdivided Lot 163; Added 1-W & SHC	1/4/85
	1	REV. - ADDED 31.5' FENCE SHT. E 1 3	2/1/85
DATE: 11/84	BY NO.	REVISION	DATE

VICINITY MAP AND GENERAL NOTES

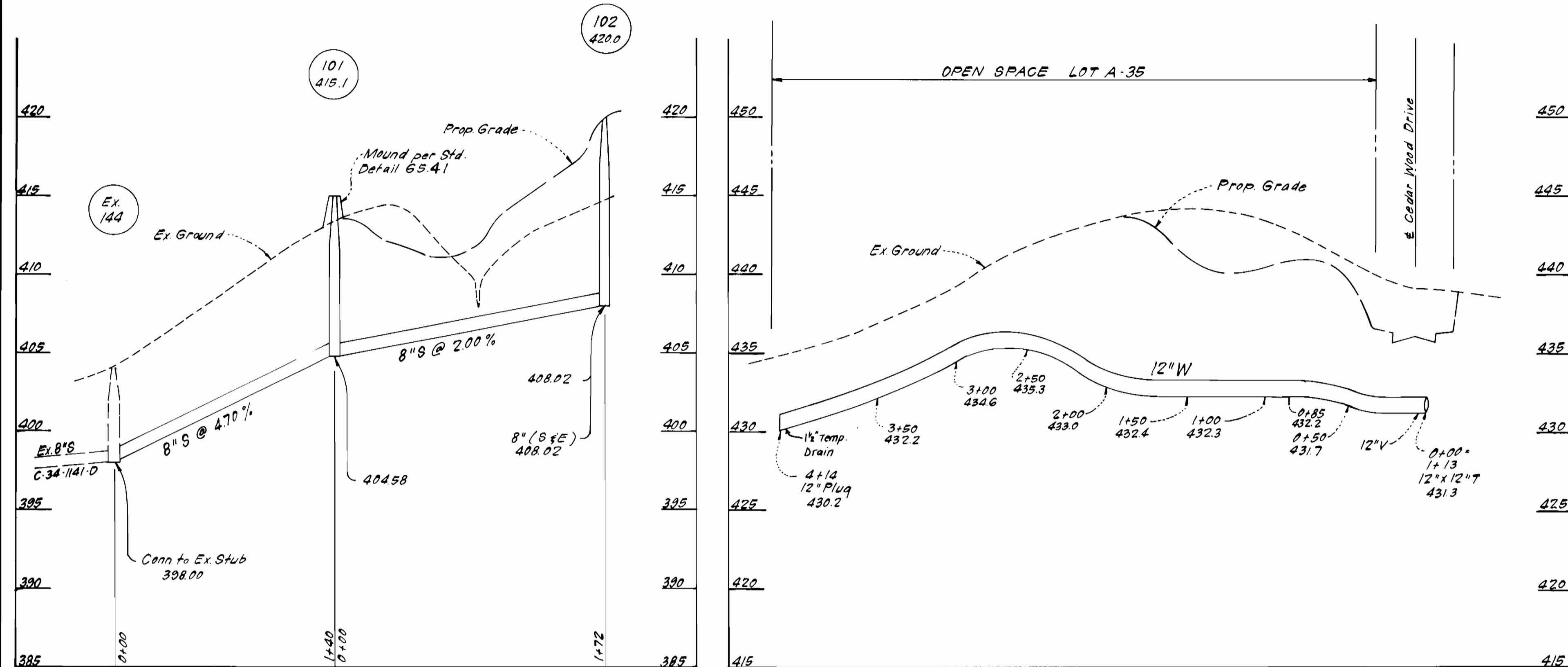
600' SCALE MAP NO. 35 BLOCK NO.

CEDAR ACRES SECTION THREE
ELECTION DISTRICT NO. 5
CONTRACT NO. 34-1299-D

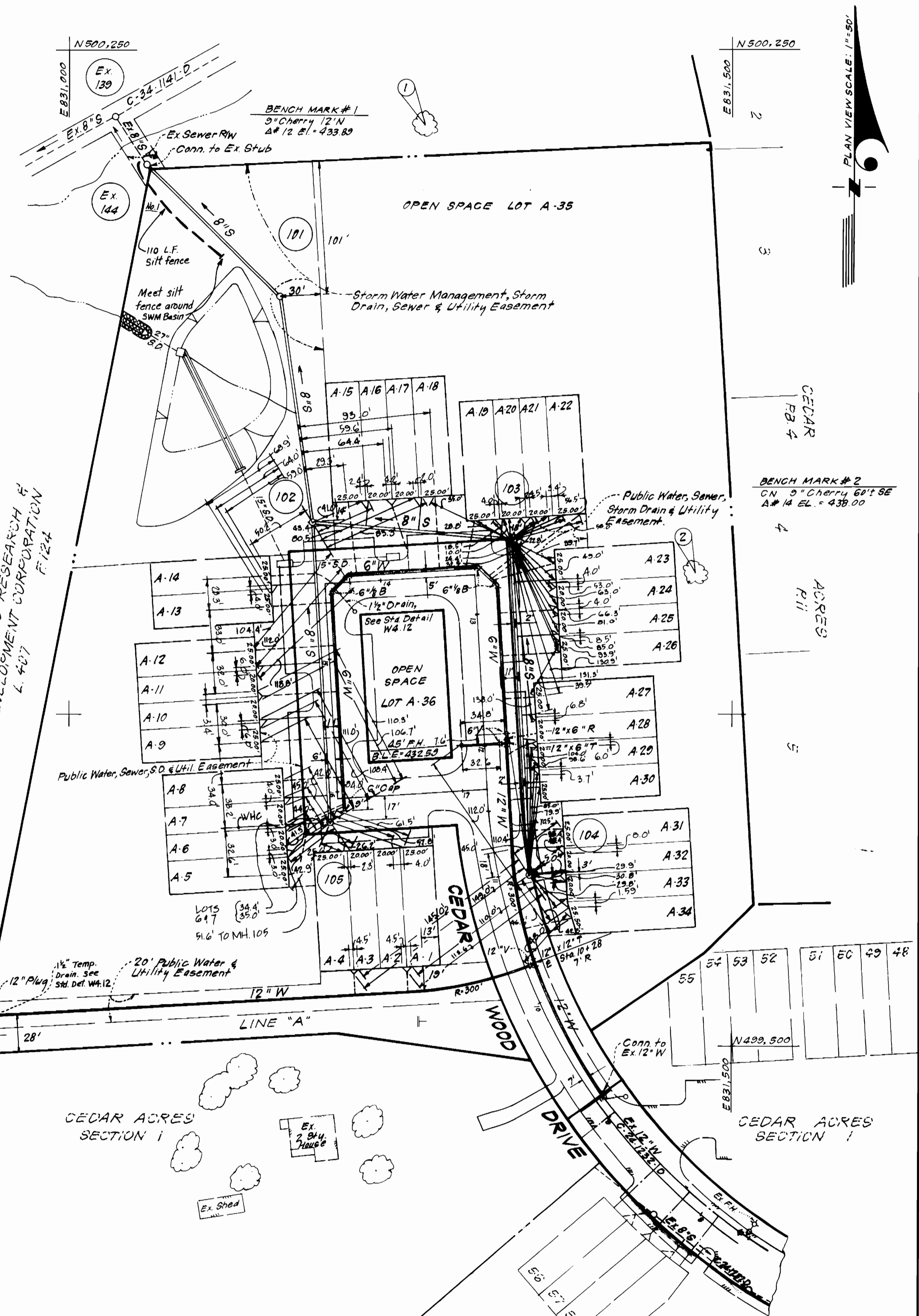
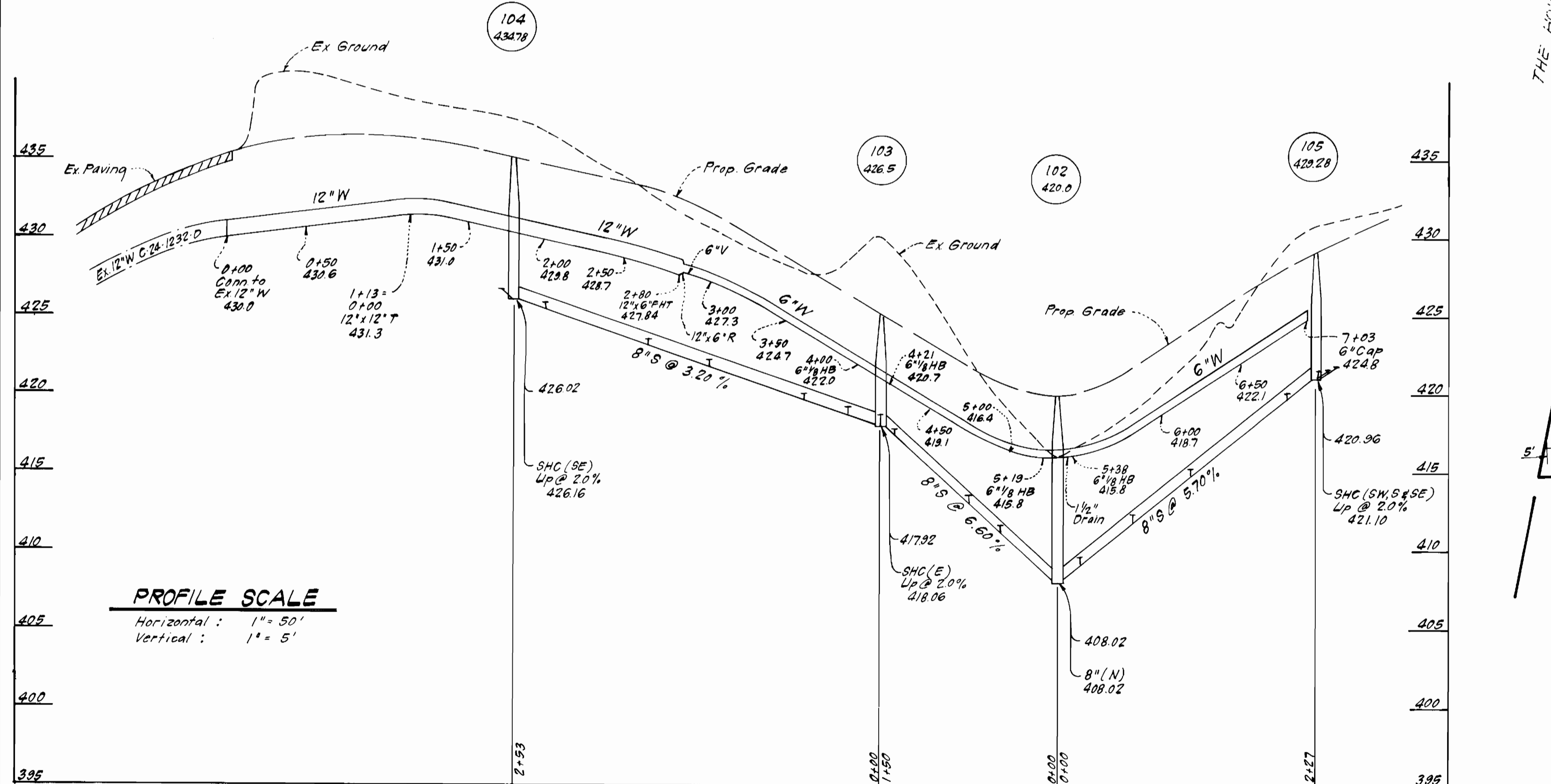
SCALE 1"=600'
SHEET 1 OF 3

OUTFALL

LINE "A"



CEDAR WOOD DRIVE



DEPARTMENT OF PUBLIC WORKS
HOWARD COUNTY, MARYLAND

John F. Nummy 11-23-84
DIRECTOR OF PUBLIC WORKS DATE

Robert S. ... 11-21-84
CHIEF, BUREAU OF UTILITIES DATE

CFB CLARK · FINEPROCK & SACKETT
ENGINEERS · PLANNERS · SURVEYORS

11315 LOCKWOOD DRIVE SILVER SPRING, MARYLAND 20904
(301) 593-3400



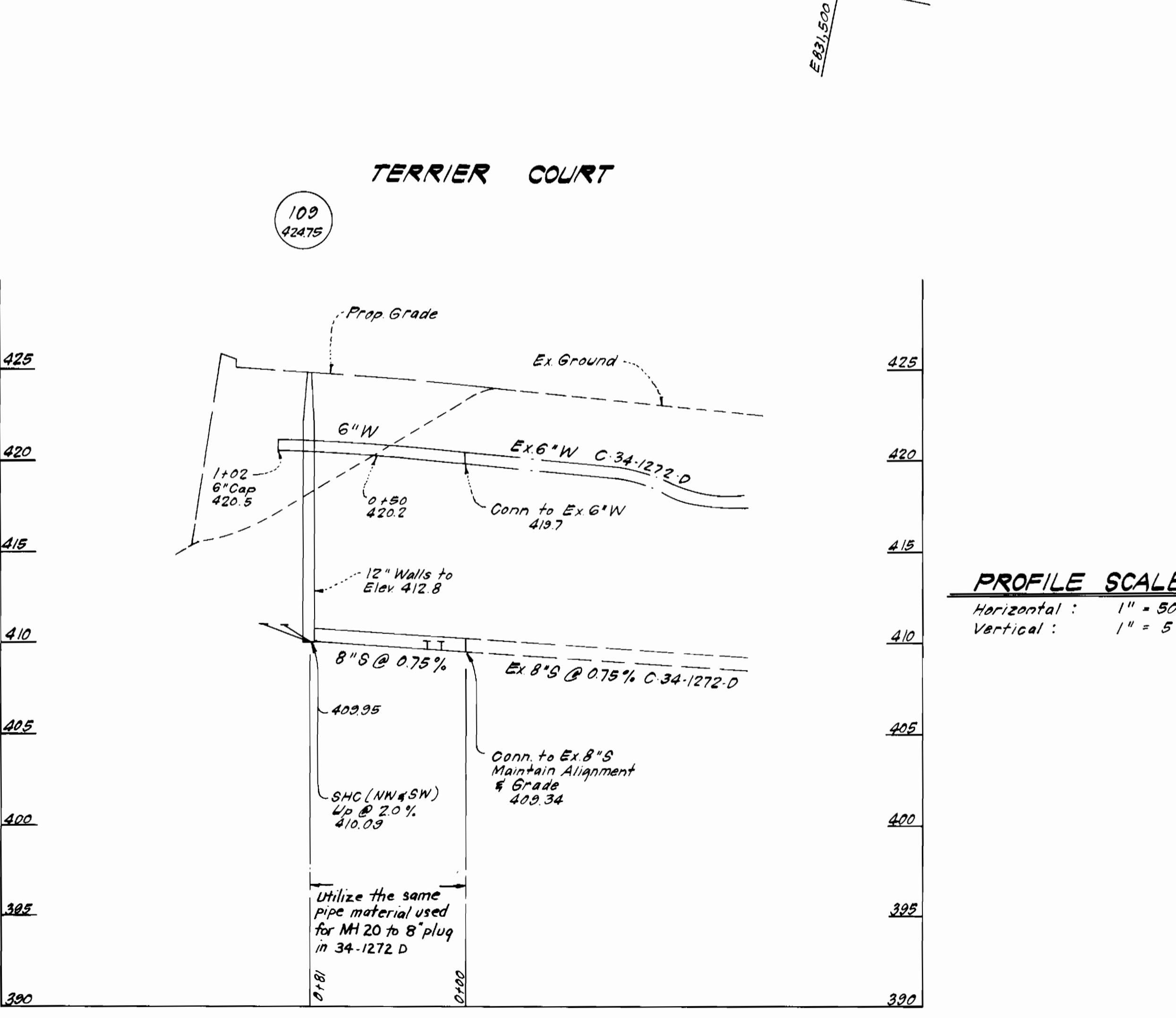
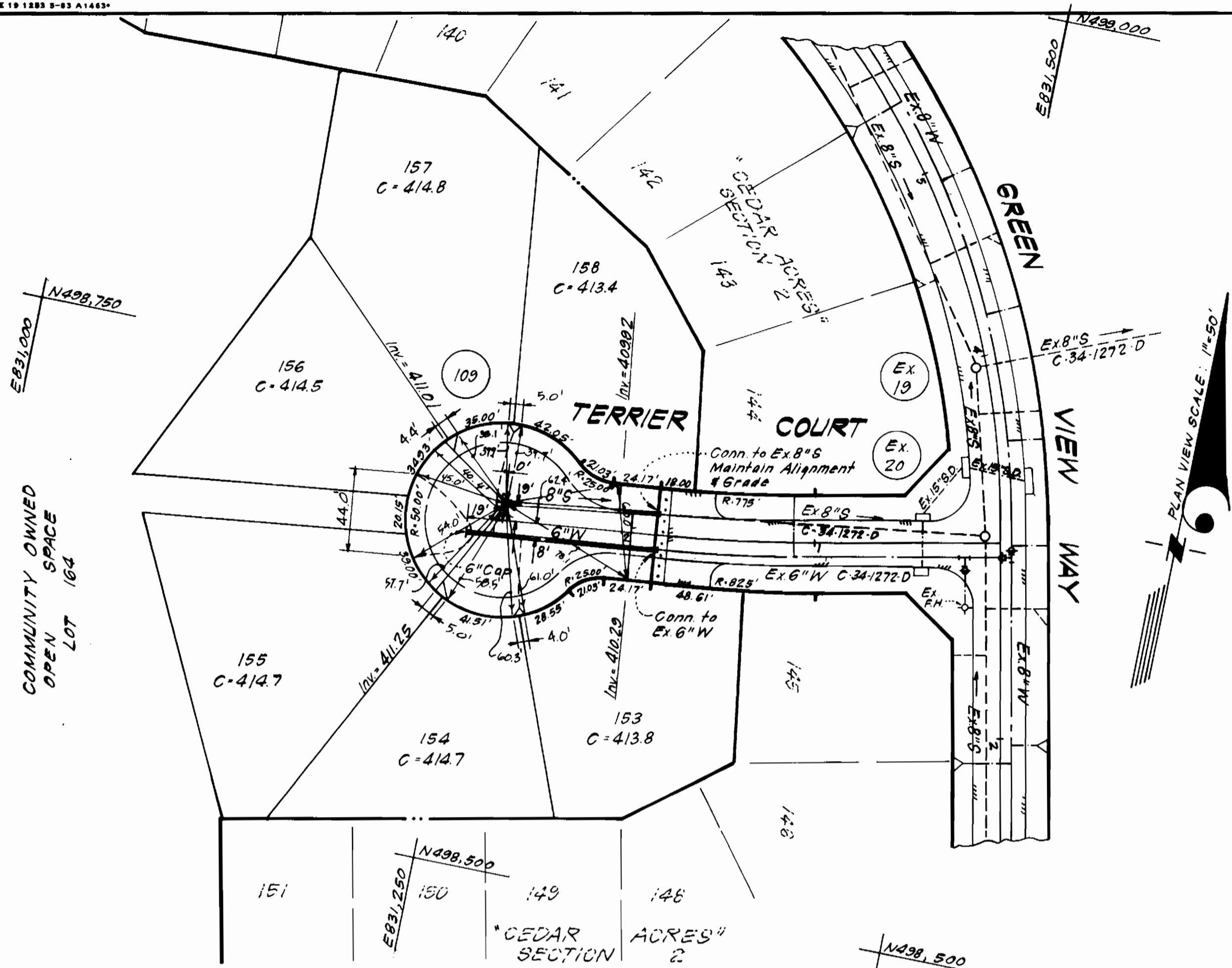
DES: C.K.G.	M.H. 1	110 LF Silt fence between MH 101 and ex. MH 144	2-1-85
DRN: V.L.B.	V.L.B. 2	Revised 12" W profile in back of A-1 to A-4	4-11-85
CHK: C.K.G.			
DATE: 11/84	BY: NO.	REVISION	DATE

PLAN & PROFILES OF
WATER & SEWER MAINS

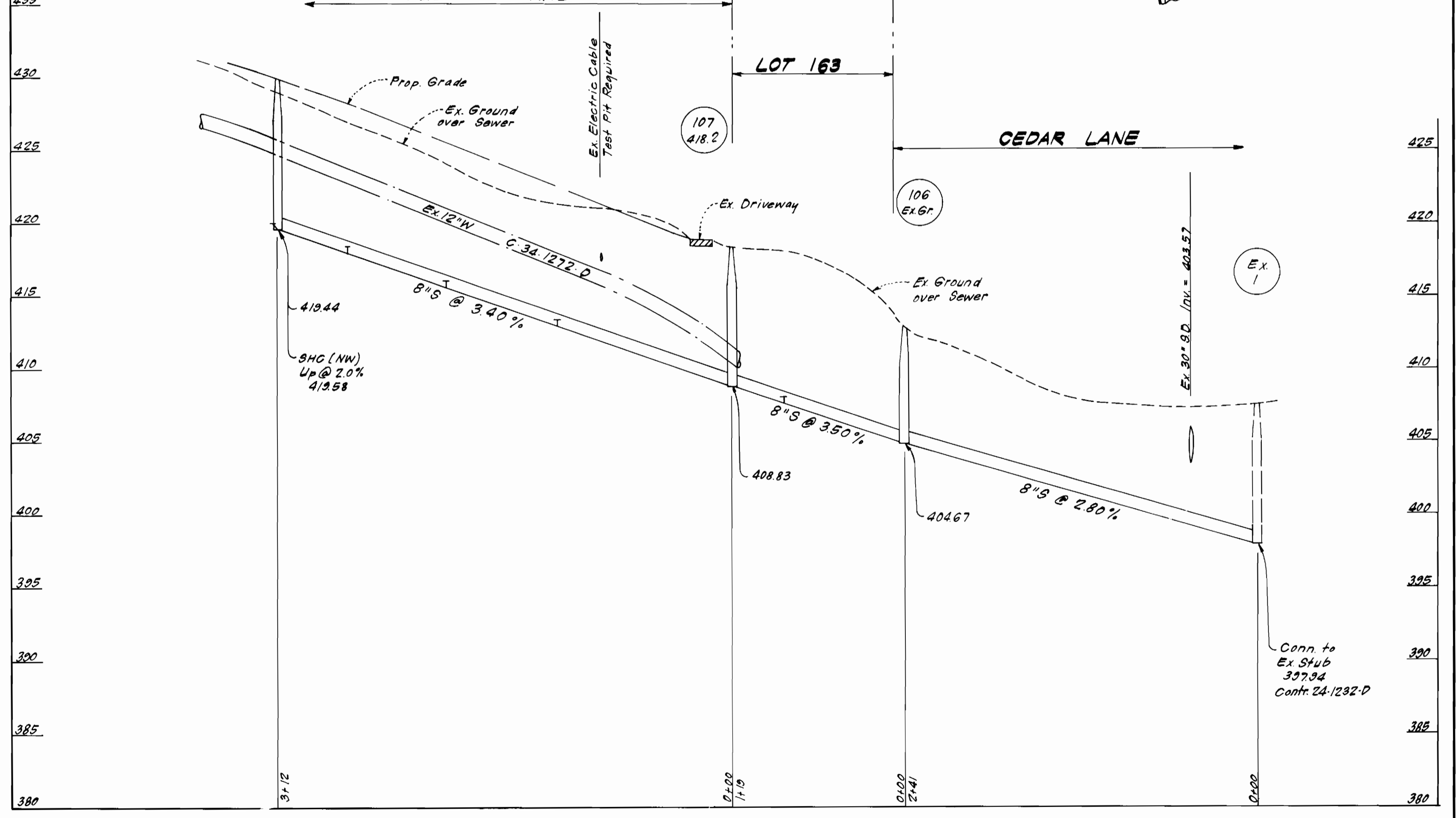
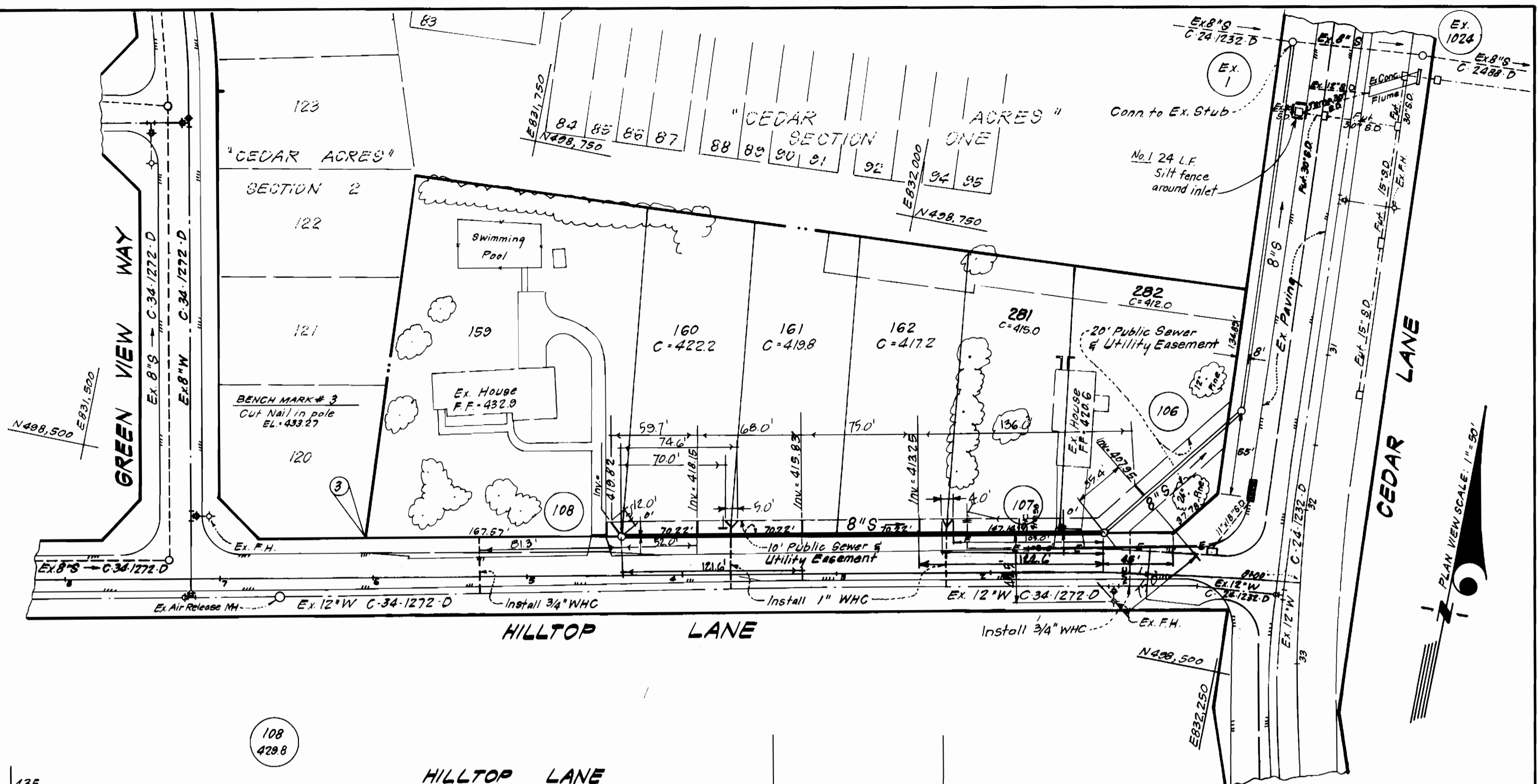
600' SCALE MAP NO. 32 BLOCK NO.

CEDAR ACRES
SECTION THREE
ELECTION DISTRICT NO.5
CONTRACT NO. 34-1299-D

SCALE AS SHOWN
SHEET 2 OF 3



PROFILE SCALE
 Horizontal: 1" = 50'
 Vertical: 1" = 5'



DEPARTMENT OF PUBLIC WORKS
 HOWARD COUNTY, MARYLAND

John F. Nemis 11-23-84
 DIRECTOR OF PUBLIC WORKS DATE

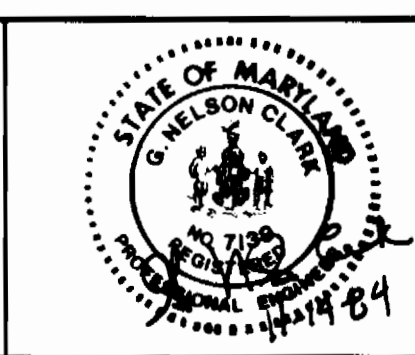
William B. ... 11-23-84
 CHIEF, BUREAU OF UTILITIES DATE

William B. ...
 CHIEF, BUREAU OF ENGINEERING DATE

William B. ...
 CHIEF, LAND DEVELOPMENT DIV. DATE

CFS CLARK · FINEPROCK & SACKETT
 ENGINEERS · PLANNERS · SURVEYORS

11315 LOCKWOOD DRIVE SILVER SPRING, MARYLAND 20904
 (301) 593-3400



DES: C.K.G.	M.H.	1	24 LF Silt fence around inlet near ex. MH #1	2-1-85
DRN: V.L.B.				
CHK: C.K.G.				
DATE: 11/84	BAL	1	Resubdivided Lot 163 - Added 1-W4SHC	1-4-88
	BY	NO.	REVISION	DATE

PLAN & PROFILES OF
 WATER & SEWER MAINS

600' SCALE MAP NO. 35 BLOCK NO. _____

CEDAR ACRES
 SECTION THREE
 ELECTION DISTRICT NO. 5
 CONTRACT NO. 34-1299-D

SCALE AS SHOWN
 SHEET 3 OF 3