

NOTE:
TEST PIT BEFORE BEGINNING
CONSTRUCTION TO VERIFY
LOCATION AND INVERT

PLAN
SCALE: 1" = 50'

Approximate Coordinates
806250
190250

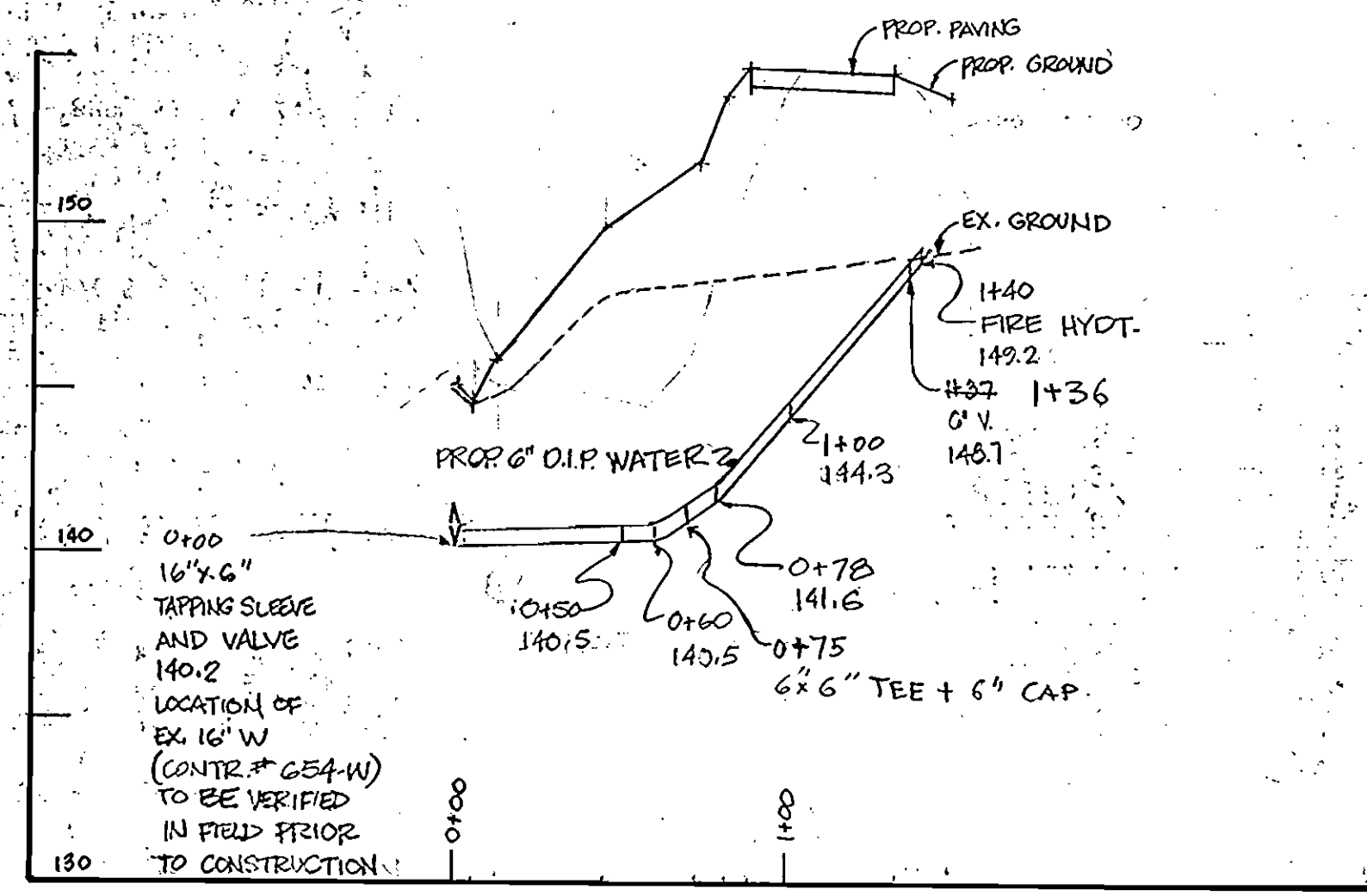
NOTE: SEDIMENT CONTROL WILL BE IMPLEMENTED IN ACCORDANCE WITH ARTICLE NO. 15 OF THE SPECIFICATIONS AND S.D.P. 83-200.

REVIEWED FOR HOWARD SOIL CONSERVATION DISTRICT AND MEETS TECHNICAL REQUIREMENT.

James M. Helms
11-5-84
D.S. SOIL CONSERVATION SERVICE

THE DEVELOPMENT PLAN IS APPROVED FOR SOIL EROSION AND SEDIMENT CONTROL BY THE HOWARD SOIL CONSERVATION DISTRICT.

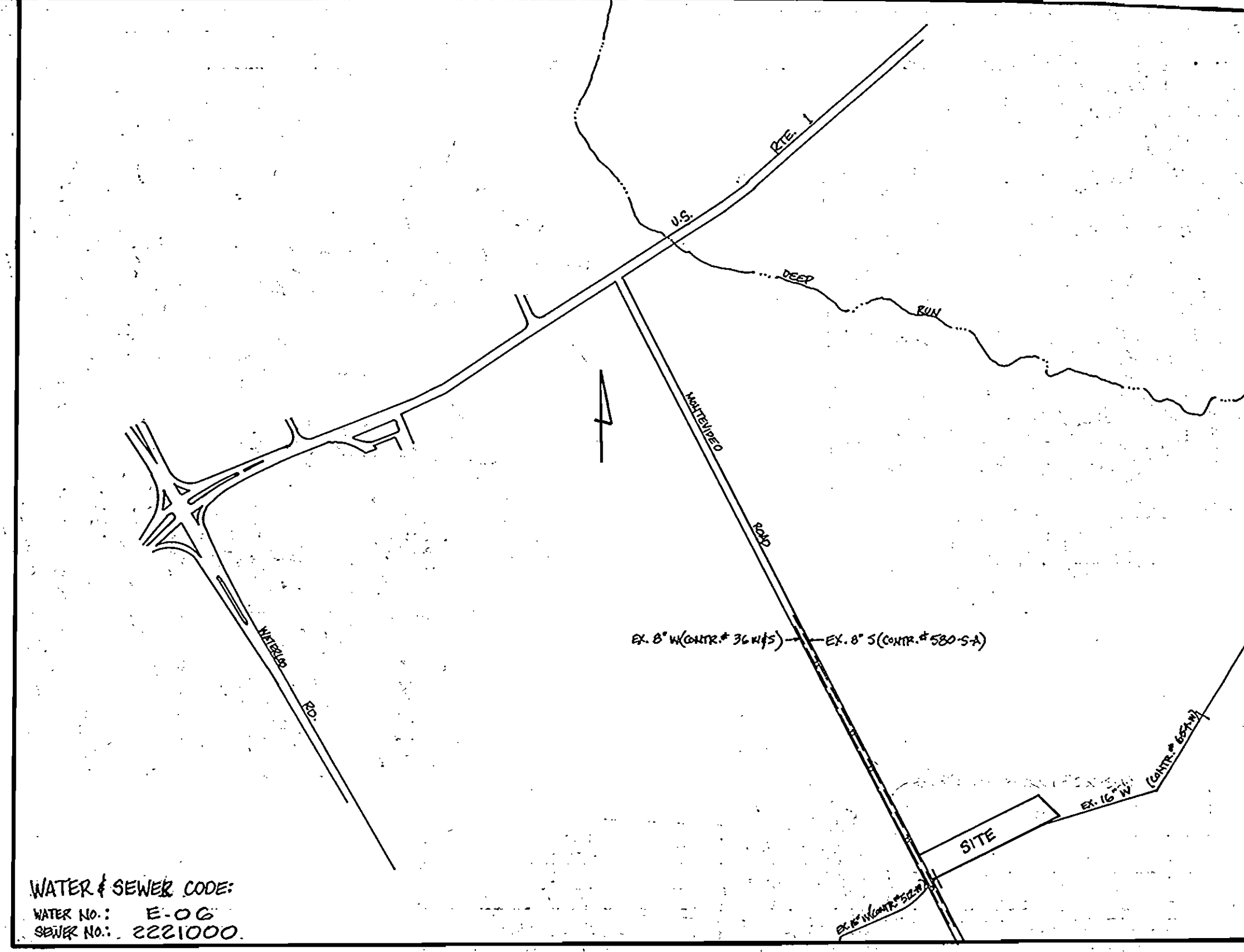
APPROVED:
Stephen L. Helms
11-5-84
HOWARD S.C.D.



PROFILE
SCALE: HORIZ: 1" = 50',
VERT: 1" = 5'

ITEM	QUANTITIES		
	ESTIMATED	AS BUILT	MATERIAL / SUPPLIER
6" WATER (D.I.P.)	NO L.F.	140 L.F.	CLASS 52, GRIFFIN
6" VALVE	1EA.	1EA	M & H VALVE CO.
FIRE HYDRANT	1EA.	1EA	M & H FH
16" TAPPING SLEEVE & VALVE	1EA.	1EA	CLOW & M & H VALVE

- BURY LINE ELEVATIONS ON FIRE HYDRANTS SHALL BE SET TO THE ELEVATIONS SHOWN ON THE DRAWINGS. ALL FIRE HYDRANTS SHALL BE STRAPPED AND BUTTRESSED WITH CONCRETE IN ACCORDANCE STANDARD DETAILS. SOIL AROUND THE FIRE HYDRANT TO BE COMPACTED IN ACCORDANCE WITH SECTION 5-15 OF THE STANDARD SPECIFICATIONS.
- ALL WATER HOUSE CONNECTIONS SHALL BE FOR AN INSIDE METER SETTING.
- THE CONTRACTOR SHALL NOT OPERATE ANY WATER MAIN VALVES ON THE EXISTING SYSTEM.



WATER & SEWER CODE:
WATER NO.: E-06
SEWER NO.: 2221000

VICINITY MAP

SCALE: 1" = 600'

GENERAL NOTES

- APPROXIMATE LOCATION OF EXISTING MAINS ARE SHOWN. THE CONTRACTOR SHALL TAKE ALL NECESSARY PRECAUTIONS TO PROTECT EXISTING MAINS AND SERVICES AND MAINTAIN UNINTERRUPTED SUPPLY. ANY DAMAGE INCURRED SHALL BE REPAIRED IMMEDIATELY TO THE SATISFACTION OF THE ENGINEER, AT THE CONTRACTOR'S EXPENSE.
- ALL HORIZONTAL CONTROLS ARE BASED ON MARYLAND STATE COORDINATES.
- ALL VERTICAL CONTROLS ARE BASED ON U.S.G.S. DATUM.
- ALL PIPE ELEVATIONS SHOWN ARE INVERT ELEVATIONS.
- CLEAR ALL UTILITIES BY A MINIMUM OF 6" CLEAR ALL POLES BY 2'-0" MINIMUM OR TUNNEL AS REQUIRED. ANY COST INCURRED TO THE CONTRACTOR FOR TUNNELING OR BRACING AT POLES SHALL BE INCLUDED IN UNIT PRICES BID FOR EXCAVATION AND BACKFILL.
- FOR DETAILS NOT SHOWN ON DRAWINGS USE HOWARD COUNTY STANDARD DETAILS.
- FOR MATERIALS AND CONSTRUCTION METHODS USE HOWARD COUNTY STANDARD SPECIFICATIONS.
- CONTRACTOR SHALL LOCATE EXISTING UTILITIES A MINIMUM OF TWO (2) WEEKS IN ADVANCE OF CONSTRUCTION OPERATIONS IN THE VICINITY OF PROPOSED UTILITIES AT HIS OWN EXPENSE.
- CONTRACTOR SHALL NOTIFY THE FOLLOWING UTILITIES OR AGENCIES AT LEAST FIVE (5) WORKING DAYS BEFORE STARTING WORK SHOWN ON THESE PLANS:
STATE HIGHWAY ADMINISTRATION - 531-5533
BALTIMORE GAS & ELECTRIC COMPANY - UNDERGROUND ELECTRIC DISTRIBUTION CUSTOMER SERVICE - 685-0123
BALTIMORE GAS & ELECTRIC COMPANY - UNDERGROUND GAS DISTRIBUTION CUSTOMER SERVICE - 685-0123
ENGINEERING - "DAMAGE CONTROL" - 234-5621
"MISS UTILITY" - 1-888-0100
CHESAPEAKE & POTOMAC (C&P) TELEPHONE COMPANY - 725-9976
AMERICAN TELEPHONE & TELEGRAPH - CABLE LOCATION DIVISION - 393-3553
COLONIAL PIPELINE COMPANY - 781-4641
BUREAU OF UTILITIES, HOWARD COUNTY - 992-2366
- TREES ARE TO BE PROTECTED FROM DAMAGE TO MAXIMUM EXTENT. TREES LOCATED WITHIN THE CONSTRUCTION STRIP ARE NOT TO BE REMOVED OR DAMAGED BY THE CONTRACTOR.
- CONTRACTOR SHALL REMOVE TREES, STUMPS AND ROOTS ALONG LINE OF EXCAVATION AS DIRECTED BY THE ENGINEER. PAYMENT OF SUCH REMOVAL SHALL BE INCLUDED IN THE UNIT PRICE BID FOR EXCAVATION AND BACKFILL.
- PLACE REGULATION "MEN WORKING" AND WARNING SIGNS AS REQUIRED TO COMPLY WITH MARYLAND STATE HIGHWAY ADMINISTRATION MANUAL OF TRAFFIC CONTROL FOR HIGHWAY CONSTRUCTION AND MAINTENANCE OPERATIONS.
- ALL WATER MAINS TO BE D.I.P. UNLESS OTHERWISE NOTED.
- TOP OF ALL WATER MAINS TO HAVE A MINIMUM OF 3'-2" COVER UNLESS OTHERWISE NOTED.
- WELLS ADJACENT TO TREES SHALL BE STRAPPED TO TREES.
- BLOCK ALL FITTINGS WITH CONCRETE.

DEPARTMENT OF PUBLIC WORKS
HOWARD COUNTY, MARYLAND

James M. Helms 11-9-84
DIRECTOR OF PUBLIC WORKS DATE

Richard S. Perry 11-21-84
CHIEF, BUREAU OF ENGINEERING DATE

Richard S. Perry 11-7-84
CHIEF, BUREAU OF UTILITIES DATE

Stephen L. Helms 11-8-84
CHIEF, LAND DEVELOPMENT DIV. DATE

BOENDER ASSOCIATES, INC.
ENGINEERS - PLANNERS - SURVEYORS
3565 ELLICOTT MILLS DRIVE
ELLCOTT CITY, MARYLAND 21043
465-7777



DES:	
DRN: S.D.K.	
CHK:	
DATE: JUNE 1984	
BY NO.	
REVISION	
DATE	

PLAN & PROFILE

COSBY E. MILLER PROPERTY
151 ELECTION DISTRICT
CONTRACT NO. 44-1296-D

SCALE: AS SHOWN
SHEET: 1 OF 1