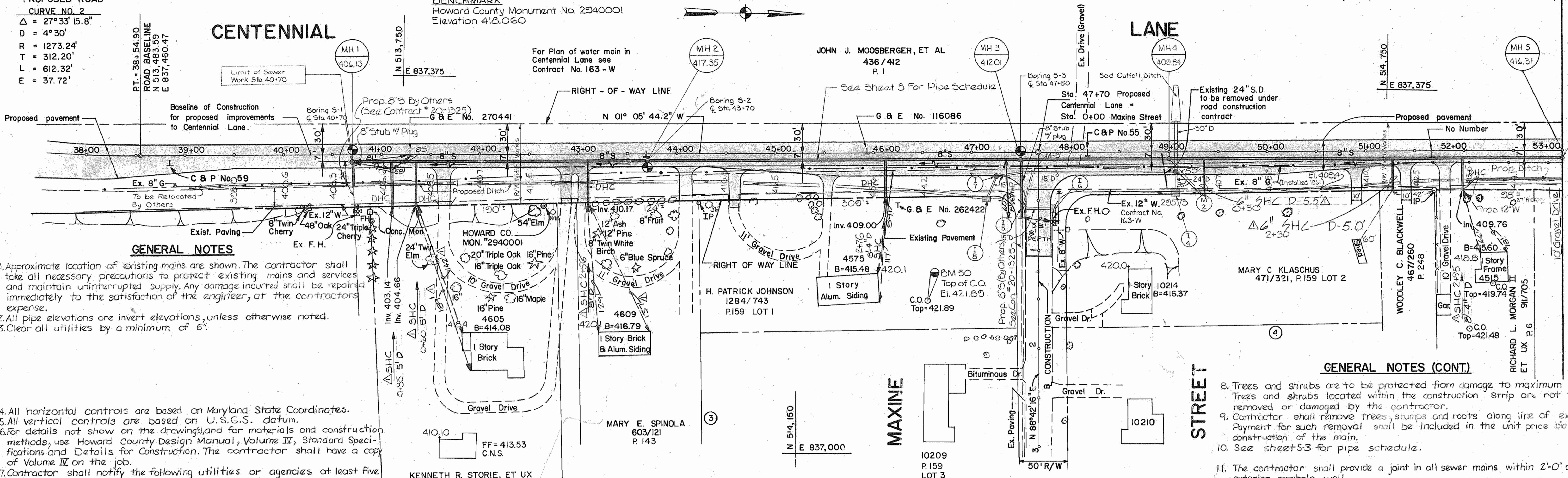


PROPOSED ROAD  
 CURVE NO. 2  
 $\Delta = 27^\circ 33' 15.8''$   
 $D = 4^\circ 30'$   
 $R = 1273.24'$   
 $T = 312.20'$   
 $L = 612.32'$   
 $E = 37.72'$

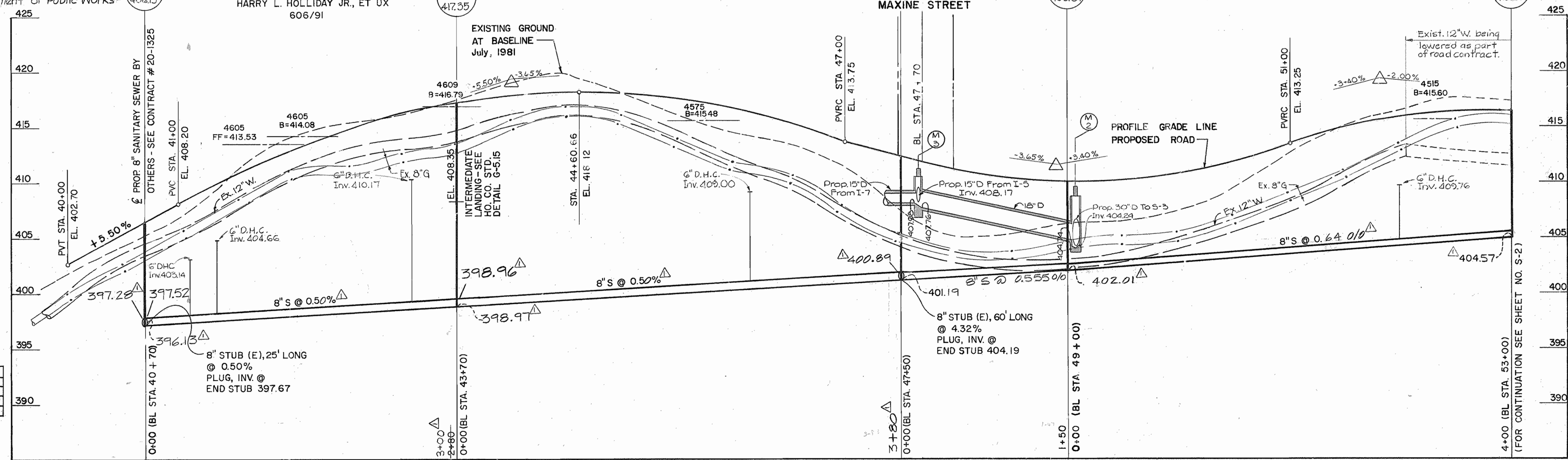
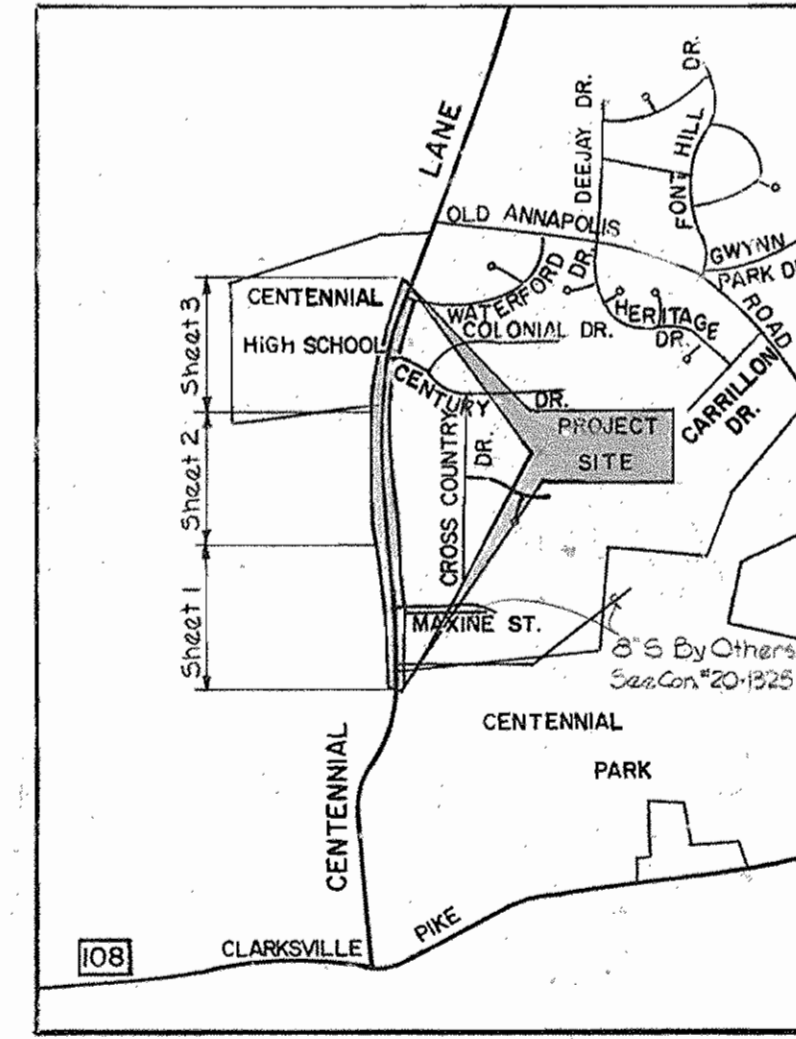
BENCHMARK  
 Howard County Monument No. 2040001  
 Elevation 418.060



- GENERAL NOTES**
- Approximate location of existing mains are shown. The contractor shall take all necessary precautions to protect existing mains and services and maintain uninterrupted supply. Any damage incurred shall be repaired immediately to the satisfaction of the engineer, at the contractor's expense.
  - All pipe elevations are invert elevations, unless otherwise noted.
  - Clear all utilities by a minimum of 6".
  - All horizontal controls are based on Maryland State Coordinates.
  - All vertical controls are based on U.S.G.S. datum.
  - For details not shown on the drawings, and for materials and construction methods, use Howard County Design Manual, Volume IV, Standard Specifications and Details for Construction. The contractor shall have a copy of Volume IV on the job.
  - Contractor shall notify the following utilities or agencies at least five working days before starting work show on these plans:
    - State Highway Administration - 531-5533
    - Baltimore Gas & Electric Co. - Contractor Services - 561-2585
    - Baltimore Gas & Electric Co. - Under Ground Damage Control - 234-5621
    - Baltimore Gas & Electric Co. - Trouble Shooting - 298-9013
    - Miss Utility - 1-559-0100
    - Colonial Pipeline Co. - 795-1390
    - Bureau of Utilities, Howard County Department of Public Works - 992-2366

- GENERAL NOTES (CONT)**
- Trees and shrubs are to be protected from damage to maximum extent. Trees and shrubs located within the construction strip are not to be removed or damaged by the contractor.
  - Contractor shall remove trees, stumps and roots along line of excavation. Payment for such removal shall be included in the unit price bid for construction of the main.
  - See sheet S-3 for pipe schedule.
  - The contractor shall provide a joint in all sewer mains within 2'-0" of exterior manhole wall.
  - All manholes shall be 4'-0" inside diameter unless otherwise noted.
  - House(s) with the symbol "C.N.S." indicates that the cellar cannot be served.
  - All sheeting and shoring will be left in place.
- FOR CONTINUATION OF NOTES SEE SHEET S-3

PLAN  
 Scale: 1" = 50'



QUANTITIES			
ITEM	ESTIMATED	AS BUILT	MATERIAL/SUPPLIER
8" Sewer	3490 L.F.		
Manholes	11		
House Conns	700 L.F.		

TYPE OF BUILDINGS Single Family Residential  
 NUMBER OF LOTS 21  
 NUMBER OF SEWER HOUSE CONNECTIONS 17  
 DRAINAGE AREA LITTLE PATUXENT

WATER & SEWER CODE  
 (County Use)  
 SEWER NO. 5720200

DEPARTMENT OF PUBLIC WORKS  
 HOWARD COUNTY, MARYLAND

Director of Public Works: *John E. Nemy*  
 Chief, Bureau of Engineering: *Richard M. Beninger*  
 Chief, Bureau of Utilities: *Richard M. Beninger*

Johnson, Mirmiran & Thompson, P.A.  
 PLANNERS ENGINEERS LANDSCAPE ARCHITECTS SURVEYORS  
 810 GLENEAGLE CT SUITE 200 BALTIMORE, MD 21204  
 SILVER SPRING, MD FAIRFAX, VA YORK, PA

DES: LAB			
DRN: MW			
CHK: CFH	KCI	SHC STATIONS	10-88
DATE: 1-18-85	KCI	AS-BUILTS	9-88
	BY NO.	REVISION	DATE

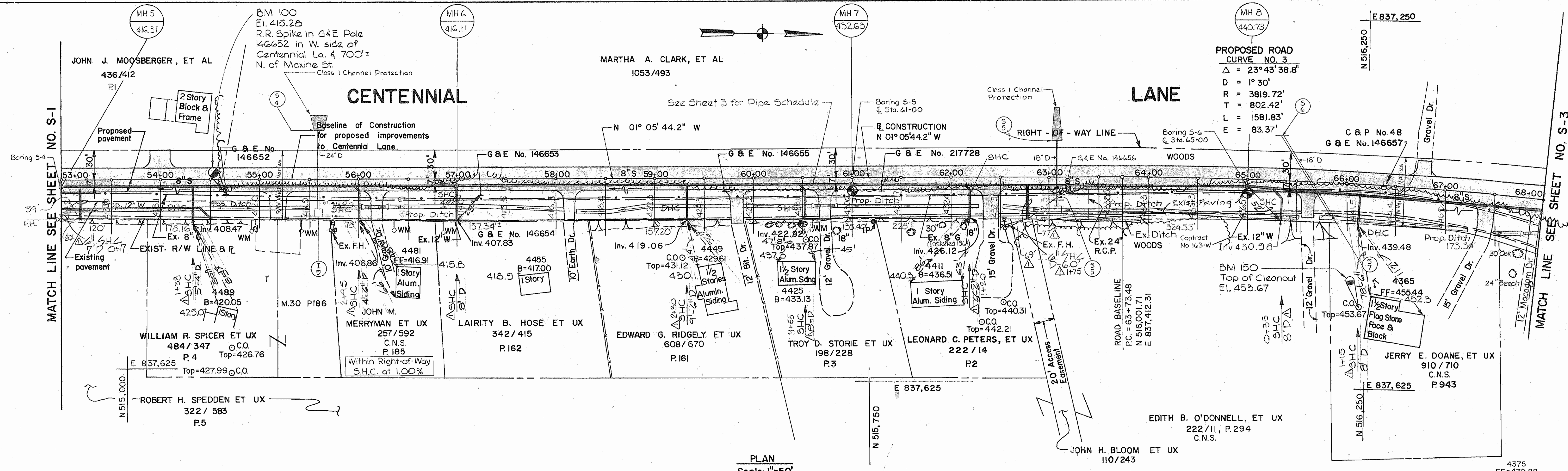
PLAN AND PROFILES  
 OF SEWER MAIN

600' SCALE MAP NO. 24 & 30. BLOCK NO.

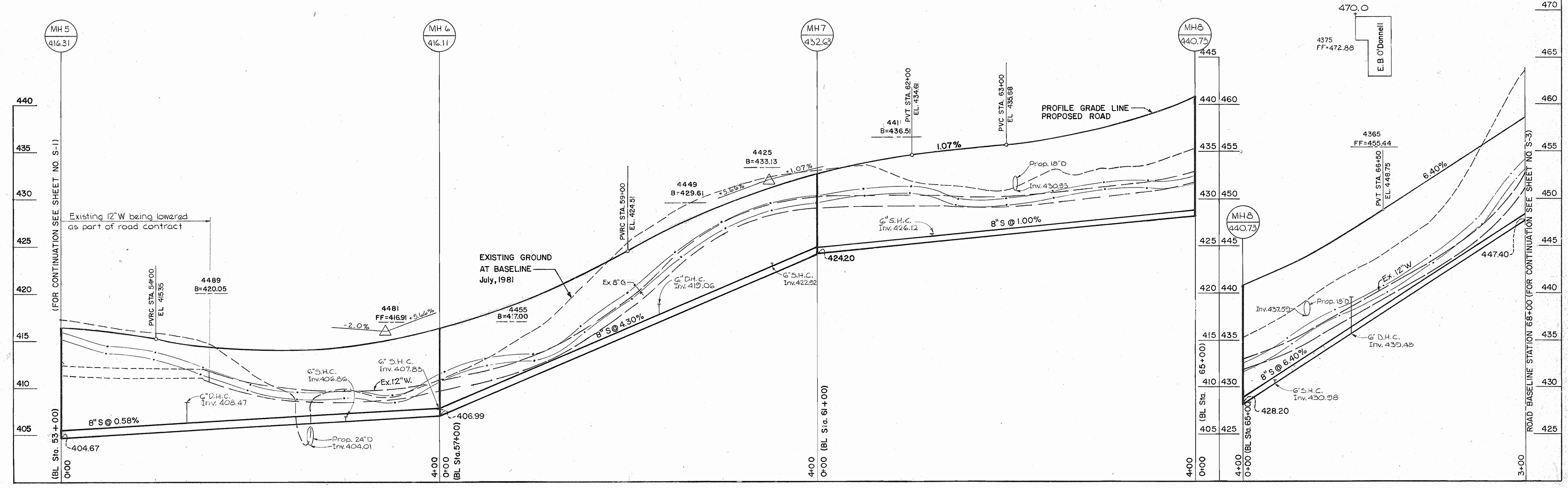
CENTENNIAL LANE COLLECTOR SEWER  
 CAPITAL PROJECT NO. S-6050  
 CONTRACT NO. 20-1291-S  
 ELECTION DISTRICT NO. 2  
 HOWARD COUNTY, MARYLAND

SCALE AS SHOWN  
 SHEET S-1 OF 28

FOR ROAD PLAN SEE FILE # 1196



PLAN  
Scale: 1"=50'

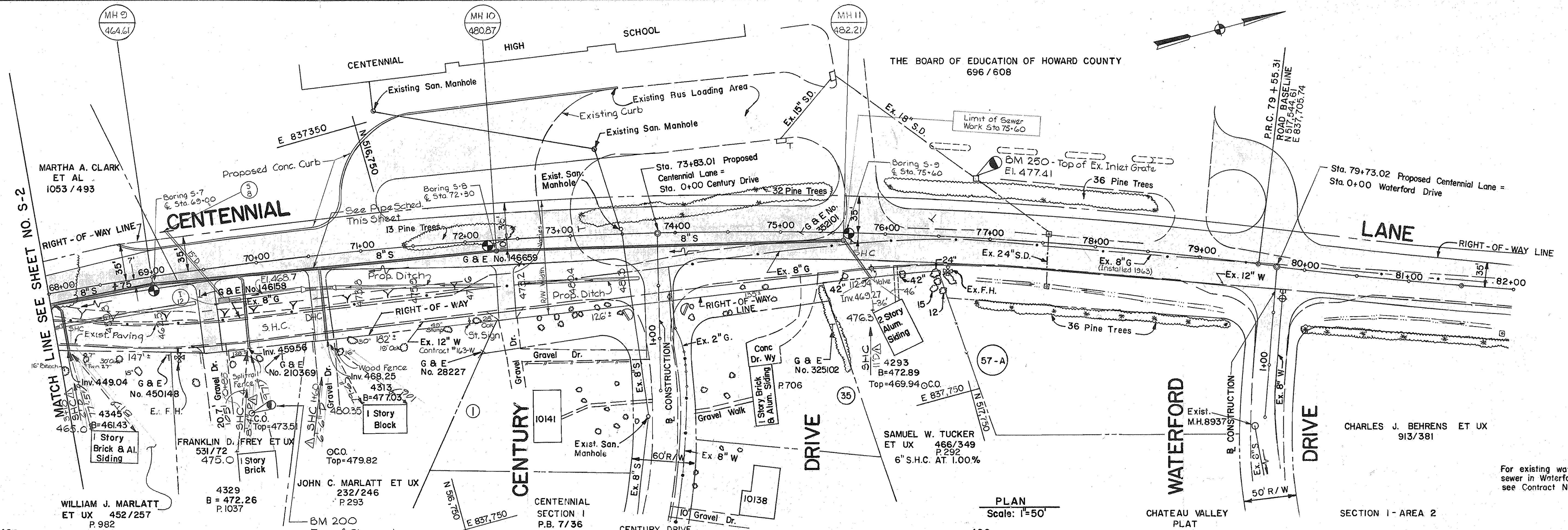


PROFILE  
Scale: Hor. 1"=50'  
Ver. 1"=5'

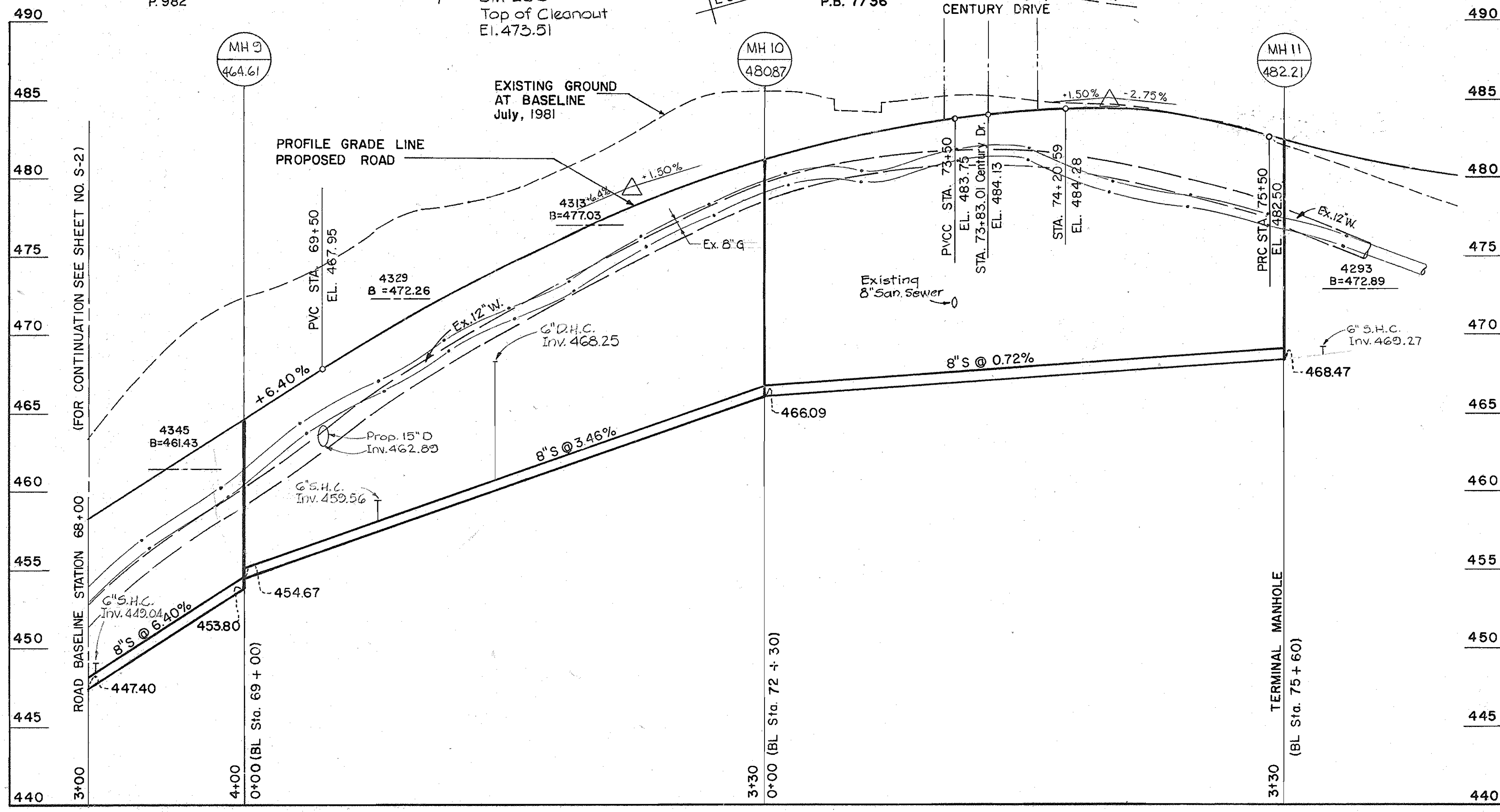
AS-BUILTS

DEPARTMENT OF PUBLIC WORKS HOWARD COUNTY, MARYLAND Director of Public Works: Robert M. Beisinger Chief, Bureau of Engineering: [Signature] Chief, Bureau of Utilities: [Signature]		Johnson, Mirmiran & Thompson, P.A. PLANNERS ENGINEERS LANDSCAPE ARCHITECTS SURVEYORS 810 GLENVALE CT SUITE 200 BALTIMORE, MD 21204 SILVER SPRING, MD FAIRFAX, VA YORK, PA		DES: LAB DRN: MW CHK: CFH DATE: 1-18-85		PLAN AND PROFILES OF SEWER MAIN REVISION: 10-88, 2-88 BY: KCI, KCI NO.: SHC STATIONS, AS-BUILTS		CENTENNIAL LANE COLLECTOR SEWER CAPITAL PROJECT NO. S-6050 CONTRACT NO. 20-1291-S ELECTION DISTRICT NO. 2 HOWARD COUNTY, MARYLAND		SCALE AS SHOWN SHEET S-2 OF 28	
--	--	--	--	--	--	---	--	---	--	-----------------------------------	--

FOR ROAD PLAN SEE FILE #1176



PLAN  
Scale: 1"=50'



PROFILE  
Scale: Hor. 1"=50'  
Ver. 1"=5'

**GENERAL NOTES (CONT. FROM SHEET S-1)**

- 15. Horizontal and vertical control information for the road base line are included on the plans for Capital Project J-4015 Centennial Lane - Maryland Route 108 to Old Annapolis Road.
- 16. All elevations given for the 6" House Connects are Invert elevations at the property line.
- 17. Contractor shall verify the location of all existing utilities to his own satisfaction before starting work.
- 18. Erosion And Sediment Control For Sanitary Sewer Construction is shown on sheets 8, 9, 10, and 11 of 28.

**PIPE SCHEDULE**

Bedding Class and Type of Pipe	
MH 1 - MH 3	- DIP Class 50, PVC SDR-35
MH 3 - MH 6	- DIP Class 50, PVC SDR-35
MH 6 - MH 9	- DIP Class 50, PVC SDR-35
MH 9 - MH 10	- DIP Class 50, PVC SDR-35
MH 10 - MH 11	- DIP Class 50, PVC SDR-35

Note: 1. Pipe Bedding for DIP shall be Gravel Backfill Below Subgrade See Howard County Standard Detail G-2.01.  
2. Ductile Iron Pipe shall be Polyethylene Encased in Accordance With ANSI/AWWA C105/A21.5-82.

Reviewed for Howard County S.C.D. and meets technical requirements.  
*James M. Halpern* Date: 2/2/86  
Soil Conservation Service  
This development plan is approved for soil erosion and sediment control by the Howard County Soil Conservation District.  
*Stephen L. Hucker* 2/2/86  
HOWARD COUNTY S.C.D.

A5-BUILTS

DEPARTMENT OF PUBLIC WORKS  
HOWARD COUNTY, MARYLAND  
Director of Public Works: *Mark F. Nunn* 2-24-86  
Chief, Bureau of Engineering: *Richard S. Rely* 2/20/86  
Chief, Bureau of Utilities: *Robert M. Beaman* 2-20-86  
Chief, Utility Design Division: *Small* 2/20/86

Johnson, Mirmiran & Thompson, P.A.  
PLANNERS ENGINEERS LANDSCAPE ARCHITECTS SURVEYORS  
810 GLENEAGLE CT SUITE 200 BALTIMORE, MD 21204  
SILVER SPRING, MD FAIRFAX, VA YORK, PA

DES: LAB			
DRN: MW			
CHK: CFH	KCI	SHC STATIONS	10-88
	KCI	A5-BUILTS	7-88
DATE: 1-18-85	BY NO.	REVISION	DATE

PLAN AND PROFILES  
OF SEWER MAIN  
600' SCALE MAP NO. 24 & 30. BLOCK NO.

CENTENNIAL LANE COLLECTOR SEWER  
CAPITAL PROJECT NO. S-6050  
CONTRACT NO. 20-1291-S  
ELECTION DISTRICT NO. 2  
HOWARD COUNTY, MARYLAND

SCALE AS SHOWN  
SHEET S-3 OF 28

FOR ROAD PLAN SEE FILE #117