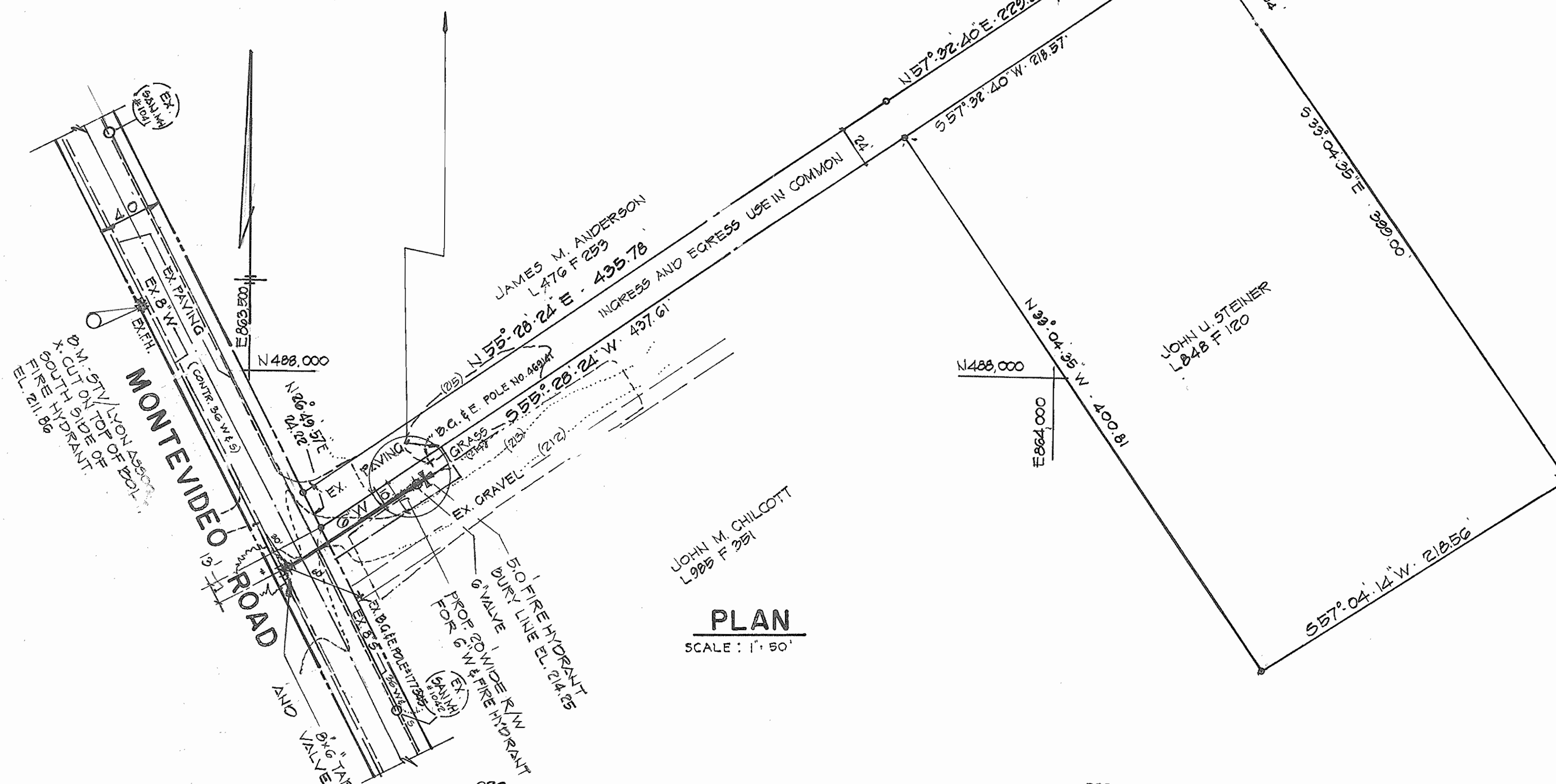
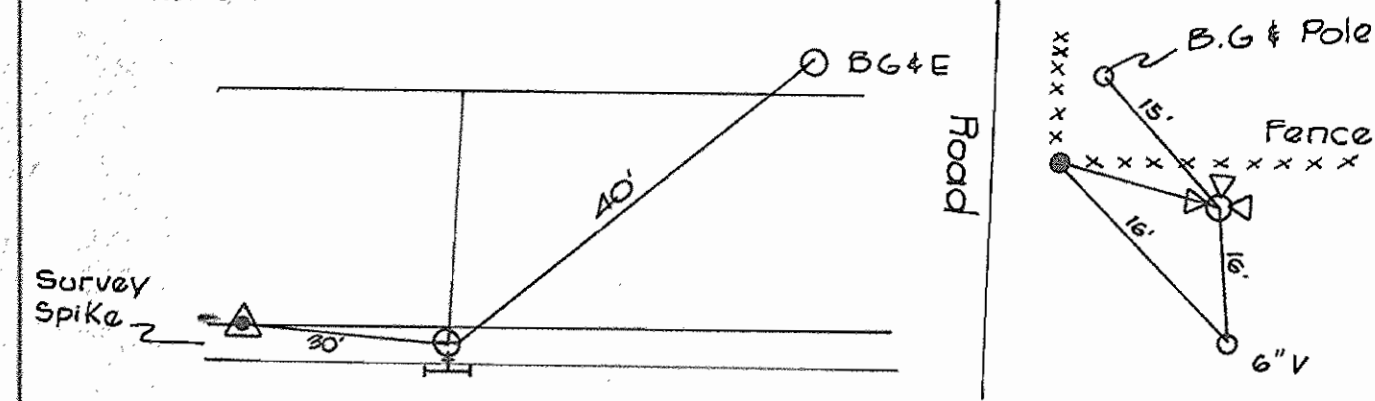
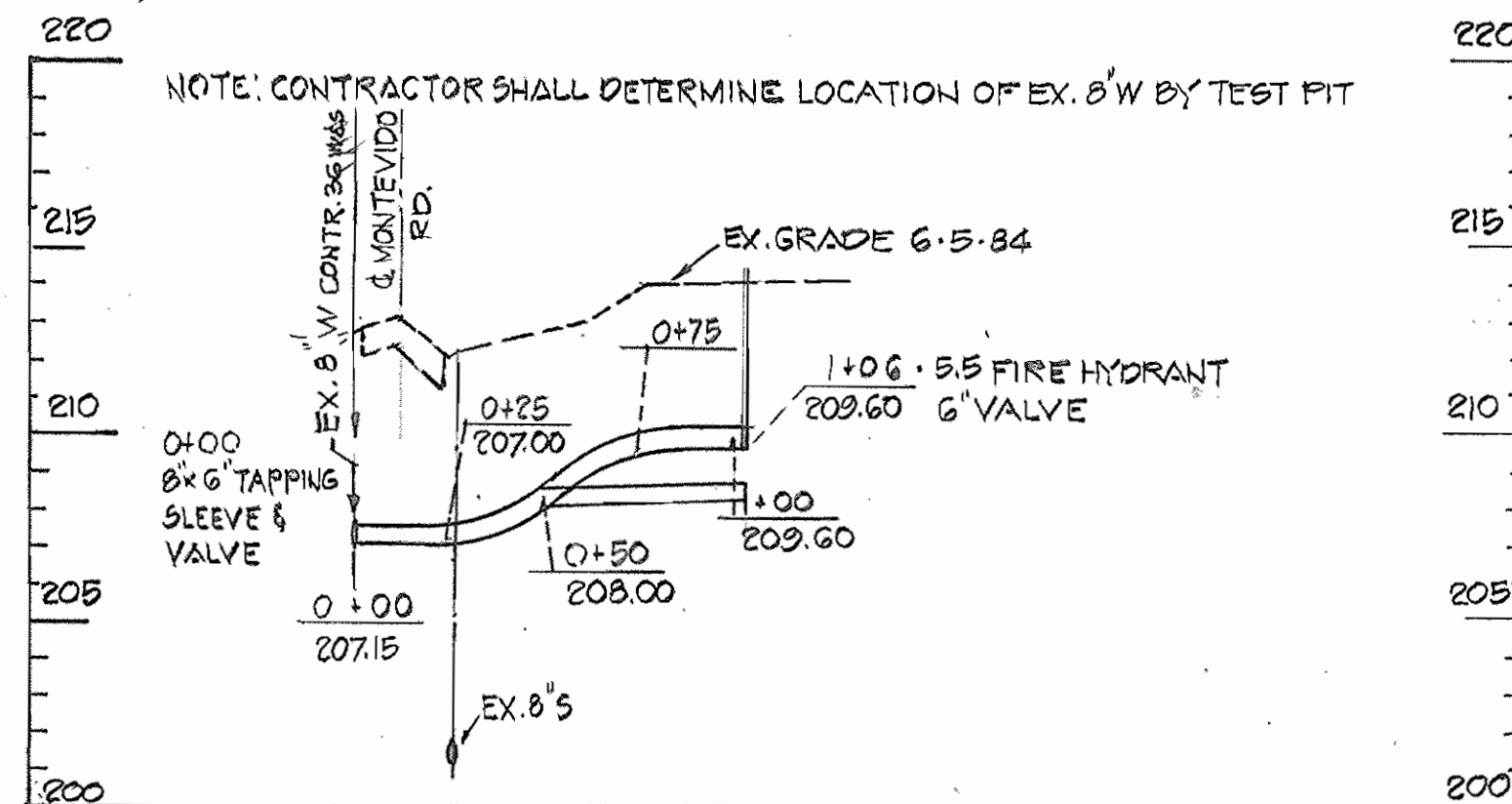


REFERENCE DRAWINGS:
 EX. 8'S MONTEVIDEO RD. SEE HO. CO. CONTRACT 36 W 4 S
 EX. 8' W



PLAN
 SCALE: 1" = 50'



PROFILE
 SCALE: VERT. 1" = 5'
 HORIZ. 1" = 50'

THIS DEVELOPMENT PLAN IS APPROVED FOR SOIL EROSION AND SEDIMENT CONTROL BY THE HOWARD SOIL CONSERVATION DISTRICT.

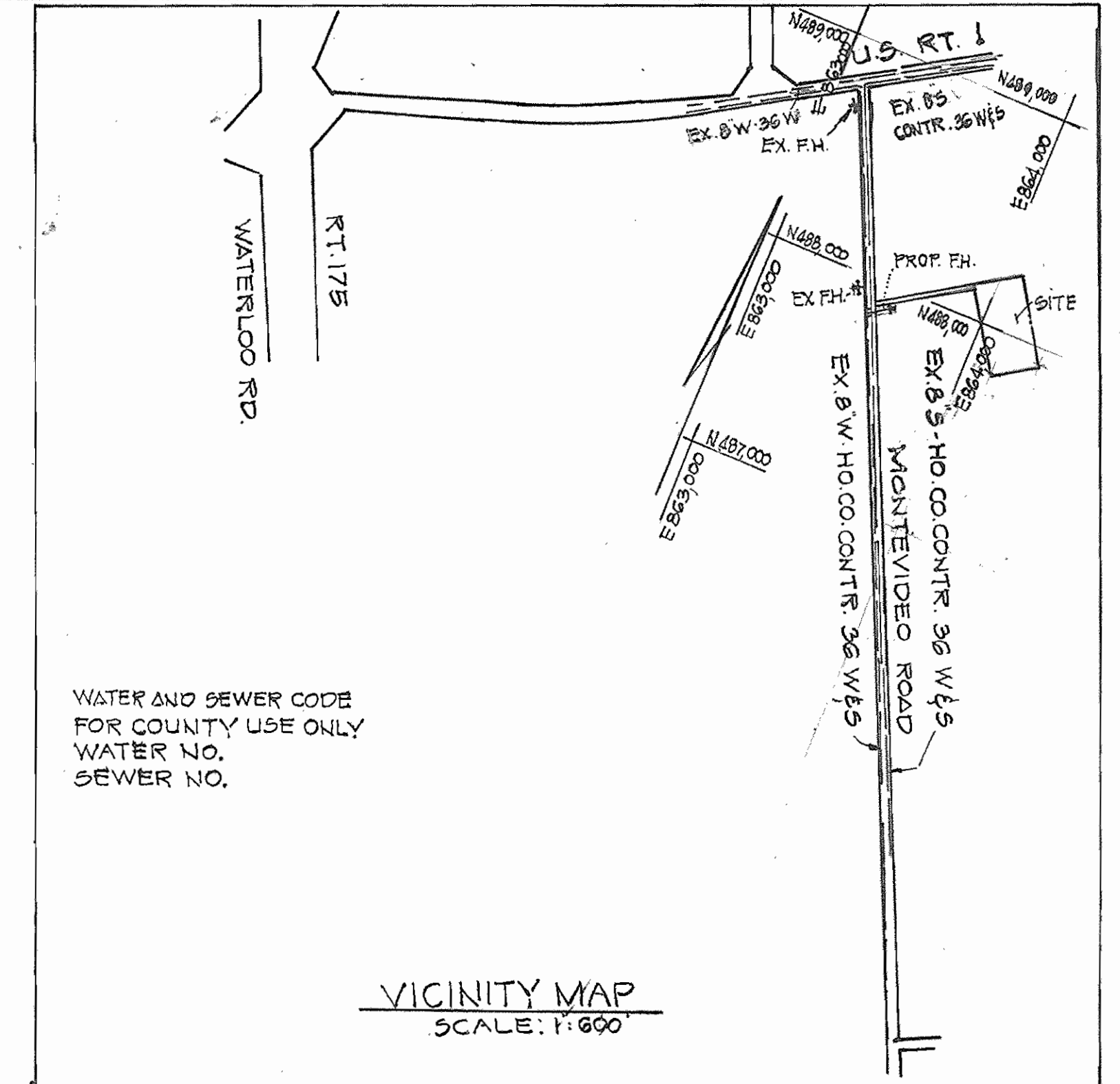
Approved: *[Signature]* Date: 8-20-84
 Howard S.C.D.

SEDIMENT CONTROL MEASURES FOR THIS CONTRACT WILL BE IMPLEMENTED IN ACCORDANCE WITH ARTICLE 15 OF THESE SPECIFICATIONS AND AS SHOWN ON THE GRADING AND SEDIMENT CONTROL PLAN S.O.P. 84-259

REVIEW FOR HOWARD COUNTY SOIL CONSERVATION DISTRICT AND MEETS TECHNICAL REQUIREMENTS

[Signature] 8-20-84
 U.S. SOIL CONSERVATION SERVICE DATE

WATER AND SEWER CODE FOR COUNTY USE ONLY
 WATER NO.
 SEWER NO.



GENERAL NOTES:

- APPROXIMATE LOCATION OF EXISTING MAINS ARE SHOWN. THE CONTRACTOR SHALL TAKE ALL NECESSARY PRECAUTIONS TO PROTECT EXISTING MAINS AND SERVICES & MAINTAIN UNINTERRUPTED SUPPLY. ANY DAMAGE INCURRED SHALL BE REPAIRED IMMEDIATELY TO THE SATISFACTION OF THE ENGINEER AT THE CONTRACTOR'S EXPENSE.
- ALL HORIZONTAL CONTROLS ARE BASED ON MD. STATE COORDINATES.
- ALL VERTICAL CONTROLS ARE BASED ON U.S.G.S. DATUM.
- ALL PIPE ELEVATIONS SHOWN ARE INV. ELEVATIONS.
- CLEAR ALL UTILITIES BY A MIN. OF 6' CLEAR. ALL POLES BY 2'-0" MIN. OR TUNNEL AS REQUIRED. ANY COSTS INCURRED TO THE CONTRACTOR FOR TUNNELING OR BRACING AT POLES SHALL BE INCLUDED IN UNIT PRICES BID FOR EXCAVATION AND BACKFILL.
- FOR DETAILS NOT SHOWN ON THE DRAWINGS USE HOWARD COUNTY STANDARD DETAILS.
- FOR MATERIALS AND CONSTRUCTION METHODS USE HOWARD COUNTY STANDARD SPECIFICATIONS.
- CONTRACTOR SHALL LOCATE EXISTING UTILITIES A MIN. OF 2 WEEKS IN ADVANCE OF CONSTRUCTION OPERATIONS IN THE VICINITY OF PROPOSED UTILITIES AT HIS OWN EXPENSE.
- CONTRACTOR SHALL NOTIFY THE FOLLOWING UTILITIES OR AGENCIES AT LEAST FIVE (5) DAYS BEFORE STARTING WORK SHOWN ON THESE PLANS.
 - BALTO. GAS AND ELECTRIC CO. UNDERGROUND ELECTRIC DISTRIBUTION CUSTOMER SERVICE - 685-0123.
 - UNDERGROUND GAS DISTRIBUTION CUSTOMER SERVICE - 685-0123.
 - ENGINEERING DAMAGE CONTROL - 234-5621.
 - MISS UTILITY @ 1-533-0100
 - CHESAPEAKE & POTOMAC (C&P) TELEPHONE CO. - 725-9976
 - AMERICAN TELEPHONE AND TELEGRAPH - CABLE LOCATION DIV. - 393-3553.
 - COLONIAL PIPELINE - DIV. OF ENGINEERING - 781-4641.
 - BUREAU OF UTILITIES OF HOWARD COUNTY - 392-2326.
- ALL WATER MAINS TO BE C.I.P. OR D.I.P. UNLESS OTHERWISE NOTED.
- TOP OF ALL WATER MAINS TO HAVE MIN. 3 1/2 FT. COVER.
- VALVES ADJACENT TO TEES SHALL BE STRAPPED TO TEES.
- BLOCK ALL FITTINGS WITH CONCRETE.
- BURY LINE ELEVATION ON FIRE HYDRANTS SHALL BE SET TO THE ELEVATIONS SHOWN ON THE DRAWINGS. ALL FIRE HYDRANTS SHALL BE STRAPPED AND BUTTRESSED WITH CONCRETE IN ACCORDANCE WITH THE STANDARD DETAILS. SOIL AROUND FIRE HYDRANTS TO BE COMPACTED IN ACCORDANCE WITH SECTION 37.01 & 37.05 OF THE STANDARD SPECIFICATIONS.
- ALL WATER HOUSE CONNECTIONS SHALL BE FOR AN INSIDE METER SETTING.
- THE CONTRACTOR SHALL NOT OPERATE ANY WATER MAIN VALVES ON THE EXISTING SYSTEM.
- PLACE REGULATION MEN WORKING AND WARNING SIGNS AS REQUIRED TO COMPLY WITH MARYLAND STATE HIGHWAY ADMINISTRATION MANUAL OF TRAFFIC CONTROL FOR HIGHWAY CONSTRUCTION AND MAINTENANCE OPERATIONS.

BENCH MARK:

DESCRIPTION: STV/LYON ASSOCIATES X-CUT ON TOP OF BOLT SOUTH SIDE OF FIRE HYDRANT - 211.86 ELEVATION

QUANTITIES			
ITEM	BID	AS BUILT	MATERIAL SUPPLIER
6" WATER	106LF	106	Griffin Pipe
FIRE HYDRANT	1	1	U.S. Pipe & Foundry
8" x 6" TAPPING SLEEVE & VALVE	1	1	"
6" VALVE			"
6" VALVE	1	1	"

DEPARTMENT OF PUBLIC WORKS HOWARD COUNTY, MARYLAND <i>[Signature]</i> 8-21-84 DIRECTOR OF PUBLIC WORKS DATE <i>[Signature]</i> 8-21-84 CHIEF, BUREAU OF UTILITIES DATE		STV LYON ASSOCIATES ENGINEERS 21 GOVERNORS COURT BALTIMORE MARYLAND 21207 		DES: TKS DRN: CHK: DATE: 8-1-84		PLAN AND PROFILE WATER MAIN AND FIRE HYDRANT 600' SCALE MAP NO. _____ BLOCK NO. _____		MONTEVIDEO ROAD CONTRACT NO. 44-1273-D FIRST ELECTION DISTRICT HOWARD COUNTY MARYLAND		SCALE AS SHOWN SHEET 1 OF 1
---	--	--	--	--	--	---	--	--	--	--------------------------------