

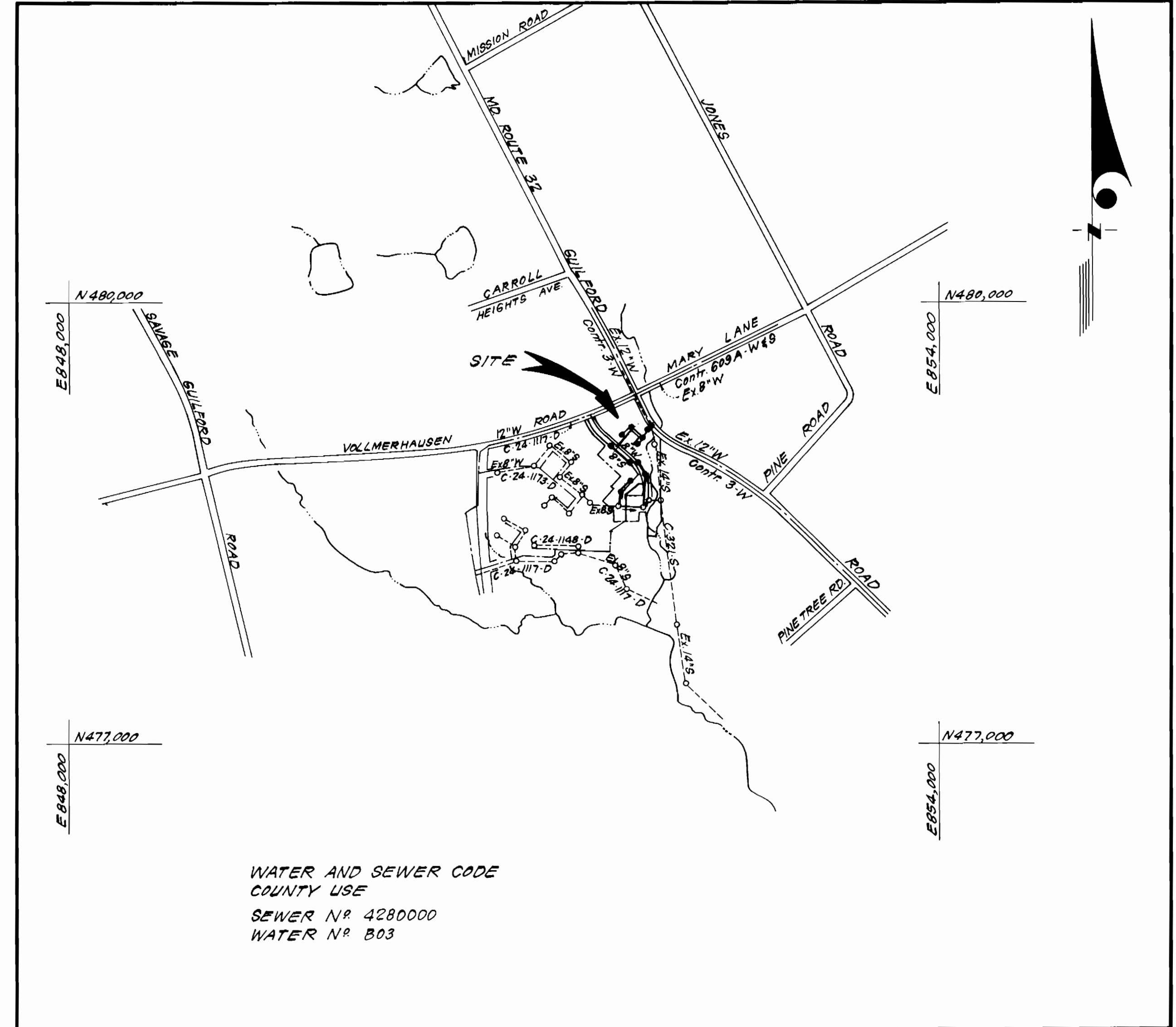
ELEVATIONS (See Note Below)					
LOT (S)	SHC Elev. @ 1'	Min. Cellar	LOT (S)	SHC Elev. @ 1'	Min. Cellar
85/106	231.41	234.7	132/133	207.53	210.6
87/98	229.79	232.1	134/135	209.76	212.9
99/100	227.16	230.5	136/137	211.07	214.2
101/102	223.00	226.3	138/139	212.57	215.7
103/104	220.45	223.8	140	212.97	216.1
105/106	211.84	215.1	141/142	213.85	216.9
107/108	211.44	214.7	143/144	214.91	218.0
109/110	211.06	214.4	145/146	215.55	218.7
111/112	210.62	213.9	147/148	211.63	214.7
113/114	209.48	212.8	149/150	210.54	213.6
115	213.28	216.4	151	209.66	212.8
116	211.93	215.0	152	208.09	211.2
117	210.59	213.7	153/154	207.20	210.3
118	209.08	212.2	155/156	209.57	212.7
119	207.78	210.9	157/158	211.29	214.4
120	206.01	209.1	159/160	213.00	216.1
121	205.22	208.3	161/162	213.84	216.9
122	204.50	207.6	163/164	215.09	218.2
123	203.83	206.9	165/166	217.77	220.9
124	203.20	206.3	167/168	221.83	225.0
125	202.57	205.7	169/170	224.37	227.5
126	201.73	204.8	171/172	226.08	229.2
127	199.01	202.1			
128/129	204.61	207.7			
130/131	206.11	209.2			

Note: Minimum cellar elevations were computed assuming a typical house location. Elevations should be verified with actual location at time of site plan.

TYPE OF BUILDING	SINGLE FAMILY ATTACHED
NUMBER OF LOTS	78
NUMBER OF SHC'S	78
NUMBER OF WHC'S	78
DRAINAGE AREA	LITTLE PATUXENT

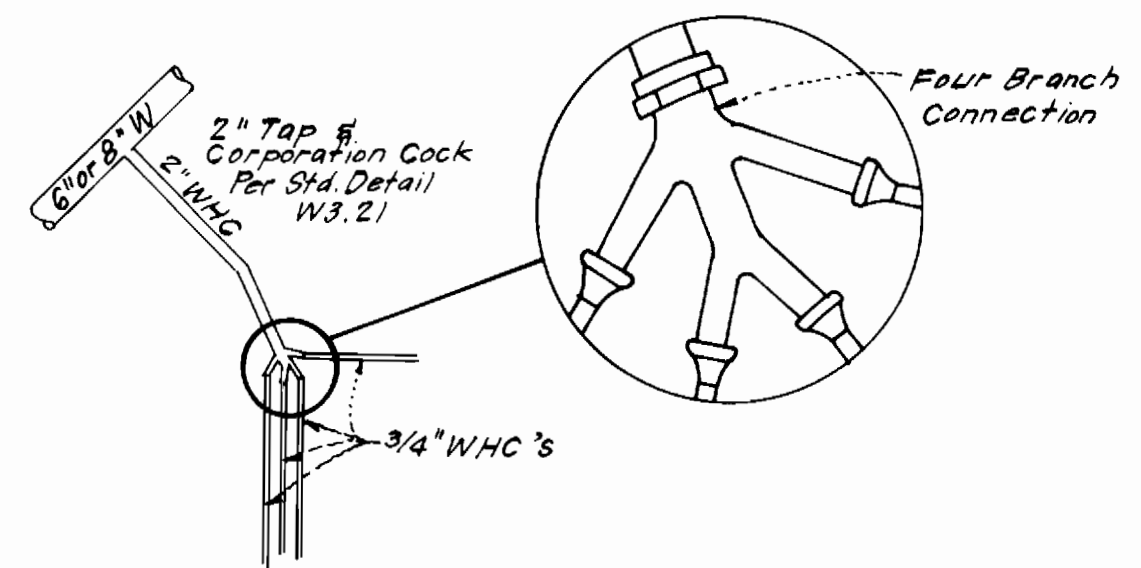
**GENERAL NOTES**

- Approximate location of existing mains are shown. The contractor shall take all necessary precautions to protect existing mains and services and maintain uninterrupted supply. Any damage incurred shall be repaired immediately to the satisfaction of the Inspector, at the contractor's expense.
- All horizontal controls are based on Maryland State Coordinates.
- All vertical controls are based on U.S.G.S. Datum.
- All pipe elevations shown are invert elevations.
- Clear all utilities by a minimum of 6" clear all poles by 2'-0" minimum or tunnel as required. Any cost incurred to the contractor for tunneling or bracing at poles shall be included in unit prices bid for excavation and backfill.
- For details not shown on the drawings use Howard County Standard Specifications.
- For materials and construction methods use Howard County Standard Specifications, 4th Ed. *(Insert Manual, Volume II, The contractor shall have a copy of Volume II on the job.)*
- Contractor shall locate existing utilities a minimum of two (2) weeks in advance of construction operations in the vicinity of proposed utilities at his own expense.
- Contractor shall notify the following utilities or agencies at least five (5) working days before starting work shown on these plans.
  - State Highway Administration - 531-5533
  - Baltimore Gas & Electric Company - Contractor Services - 561-2585
  - Baltimore Gas & Electric Company - Underground Damage Control - 234-5621
  - Baltimore Gas & Electric Company - Trouble shooting - 298-3013
  - "Miss Utility" - 1-559-0100
  - Chesapeake & Potomac (C & P) Telephone Company - 725-9976
  - Colonial Pipeline Company - 795-1330
  - Bureau of Utilities Howard County - 992-2366
- Trees are to be protected from damage to maximum extent. Trees located within the construction strip are not to be removed or damaged by the contractor.
- Contractor shall remove trees, stumps, and roots along line of excavation as directed by the Inspector. Payment for such removal shall be included in the unit price bid for excavation and backfill.
- Place regulation "Men Working" and warning signs as required to comply with Maryland State Highway Administration Manual of Traffic Control for Highway Construction and Maintenance Operations.
- All water mains to be D.I.P. unless otherwise noted.
- Top of all water mains to have a minimum of 3-1/2' cover unless otherwise noted.
- Valves adjacent to tees shall be strapped to tees.
- Block all fittings with concrete.
- Bury line elevations on fire hydrants shall be set to the elevations shown on the drawings. All fire hydrants shall be strapped and buttressed with concrete in accordance with standard details. Soil around the fire hydrant to be compacted in accordance with Section 10.03 of the Standard Specifications.
- All water house connections shall be for an inside meter setting.
- The contractor shall not operate any water main valves on the existing system.
- All sewer mains shall be C.S.P.X., V.C.P.X., P.V.C., or A.C.P. Class 2400 unless otherwise noted.
- The contractor shall provide a joint in all sewer mains within 2'-0" of exterior manhole wall.
- All manholes shall be 4'-0" inside diameter, unless otherwise noted.
- Water main and water house connection lines must have a minimum of one foot separation from the sanitary sewer and sewer house connections as they cross. Except at crossings, water and sewer lines shall have a minimum horizontal separation of 10'.
- For all Copper Water House Connections, utilize flared type fittings only.



WATER AND SEWER CODE  
COUNTY USE  
SEWER NR 4280000  
WATER NR 803

VICINITY MAP  
SCALE: 1" = 600'



4-WAY WHC DETAIL  
(Lots 115-118 & 160-163)  
NO SCALE

CONTRACT NO. 24-1269-D  
ASPENWOOD  
SECTION 2 AREA 1  
HOWARD COUNTY, MARYLAND  
DEPARTMENT OF PUBLIC WORKS

Sediment Control Measures will be implemented in accordance with Article No. 15 of the Specifications & with Road Construction Plan F. 84-30; Drawings 4 & 5, Sediment & Erosion Control.

REVIEWED FOR HOWARD SOIL CONSERVATION DISTRICT AND MEETS TECHNICAL REQUIREMENT.  
Signature: *James P. Saylor* DATE: 10-25-84  
U.S. SOIL CONSERVATION SERVICE

This Development Plan is approved for Soil Erosion and Sediment Control by the Howard Soil Conservation District.

APPROVED:  
Signature: *Stephen L. Saylor* DATE: 10-25-84  
Howard S.C.D.

QUANTITIES			
ITEM	ESTM'D	AS-BUILT	MATERIAL/SUPPLIER
6"W	802 LF	830 LF	Griffin Pipe (DIP)
8"W	879 LF	890 LF	"
8"S	1137 LF	1170 LF	American Pipe (A+P)(PVC)
F.H.	2 EA	2 ea.	M+L Municipal + Contr. Sales
6"V(excl.F.H.)	4 EA	5 ea.	"
8"V	1 EA	1 ea.	"
4"MH	12 EA	12 ea.	Terra Hill (Precast Concrete)
3/4" WHC	1203 LF	1351 LF	Kcopper Municipal + Contr. Sales
1" WHC	702 LF	741 LF	"
2" WHC	75 LF	70 LF	"
6" SHC	1065 LF	957 LF	American Pipe (A+P)(PVC)
12"x8" T.S. 4V	1 EA	1 ea.	Clow Municipal + Contr. Sales
1 1/2" Drains	2 EA	2 ea.	Kcopper Municipal + Contr. Sales
3" Blowoff	1 EA	1 ea.	M+L Municipal + Contr.

ASPENWOOD  
SECTION 2 AREA 1  
LOTS 95 THRU 175

DEPARTMENT OF PUBLIC WORKS  
HOWARD COUNTY, MARYLAND  
Signature: *James P. Saylor* DATE: 10/21/84  
DIRECTOR OF PUBLIC WORKS  
Signature: *Robert M. Buehler* DATE: 10/20/84  
CHIEF, BUREAU OF UTILITIES

CLARK-FINEFROCK & SACKETT  
ENGINEERS - PLANNERS - SURVEYORS  
11315 LOCKWOOD DRIVE SILVER SPRING, MARYLAND 20904  
(301) 593-3400

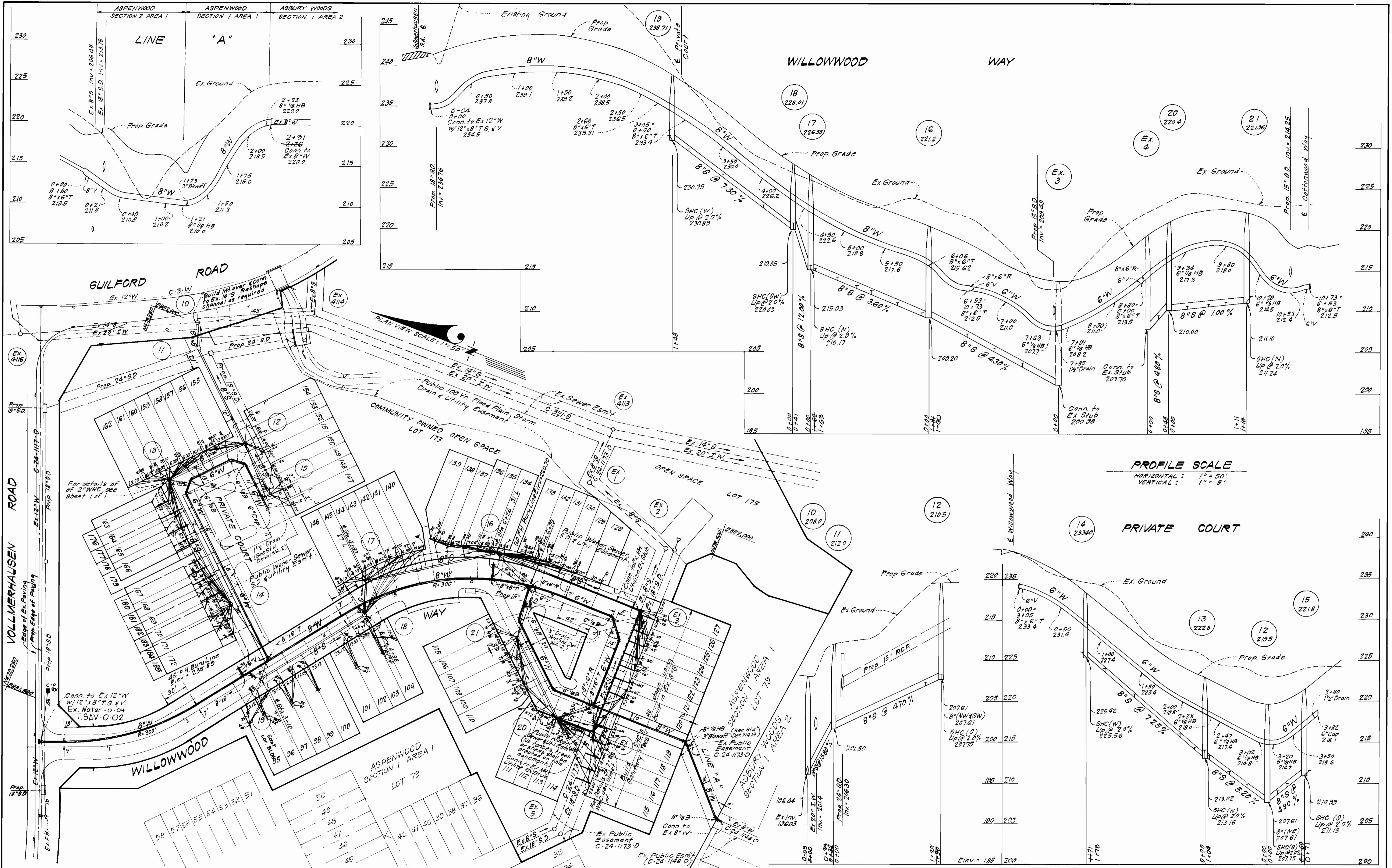


DES: C.K.G.				
DRN: V.L.B.				
CHK: C.K.G.				
DATE: 8-84	BY NO.	REVISION	DATE	

TITLE SHEET

ASPENWOOD  
SECTION 2 AREA 1  
6TH ELECTION DISTRICT  
CONTRACT NO. 24-1269-D  
SCALE AS SHOWN  
SHEET 1 OF 2





**PROFILE SCALE**  
 HORIZONTAL: 1" = 50'  
 VERTICAL: 1" = 5'

**PRIVATE COURT**

DEPARTMENT OF PUBLIC WORKS  
 HOWARD COUNTY, MARYLAND

Director of Public Works: Robert M. Brinson  
 Chief, Bureau of Utilities: Robert M. Brinson

Chief, Bureau of Engineering: [Signature]  
 Chief, Land Development Div.: [Signature]

**CF&S** CLARK, FINEFROCK & SACKETT  
 ENGINEERS - PLANNERS - SURVEYORS

11315 LOCKWOOD DRIVE SILVER SPRING, MARYLAND 20904  
 (301) 593-3400



DES: C.K.G. VLB / 1  
 DRN: V.L.B.  
 CHK: C.K.G.  
 DATE: 8-84

Revised water & sewer house connections to accommodate the result of Lots 163-173 as per Ho. Co. Comments dated July 25, 1985. Also revised parking lot as per Rd. Contr. P-85-30 B-285

PLAN & PROFILES OF WATER & SEWER MAINS

600'S SCALE MAP NO. 47 BLOCK NO.

ASPENWOOD SECTION 2 AREA 1  
 6TH ELECTION DISTRICT  
 CONTRACT NO. 24-1269-D

SCALE AS SHOWN  
 SHEET 2 OF 2