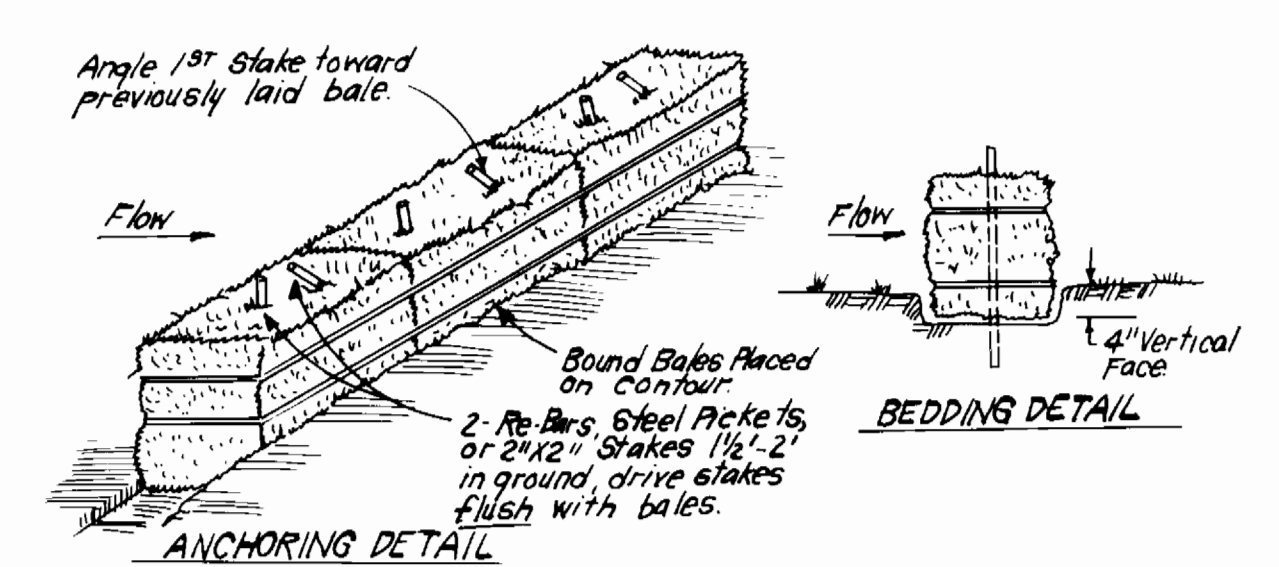
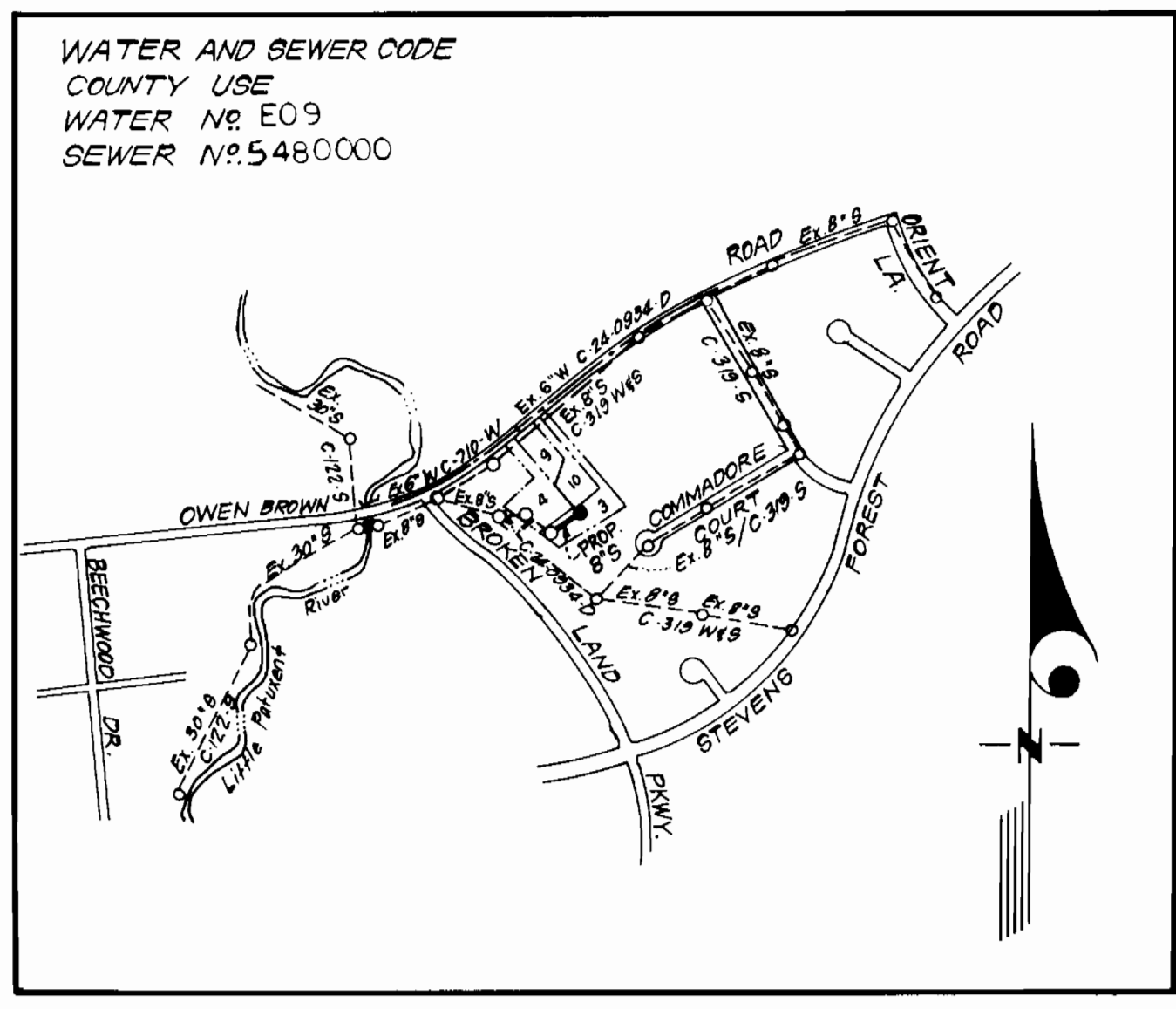


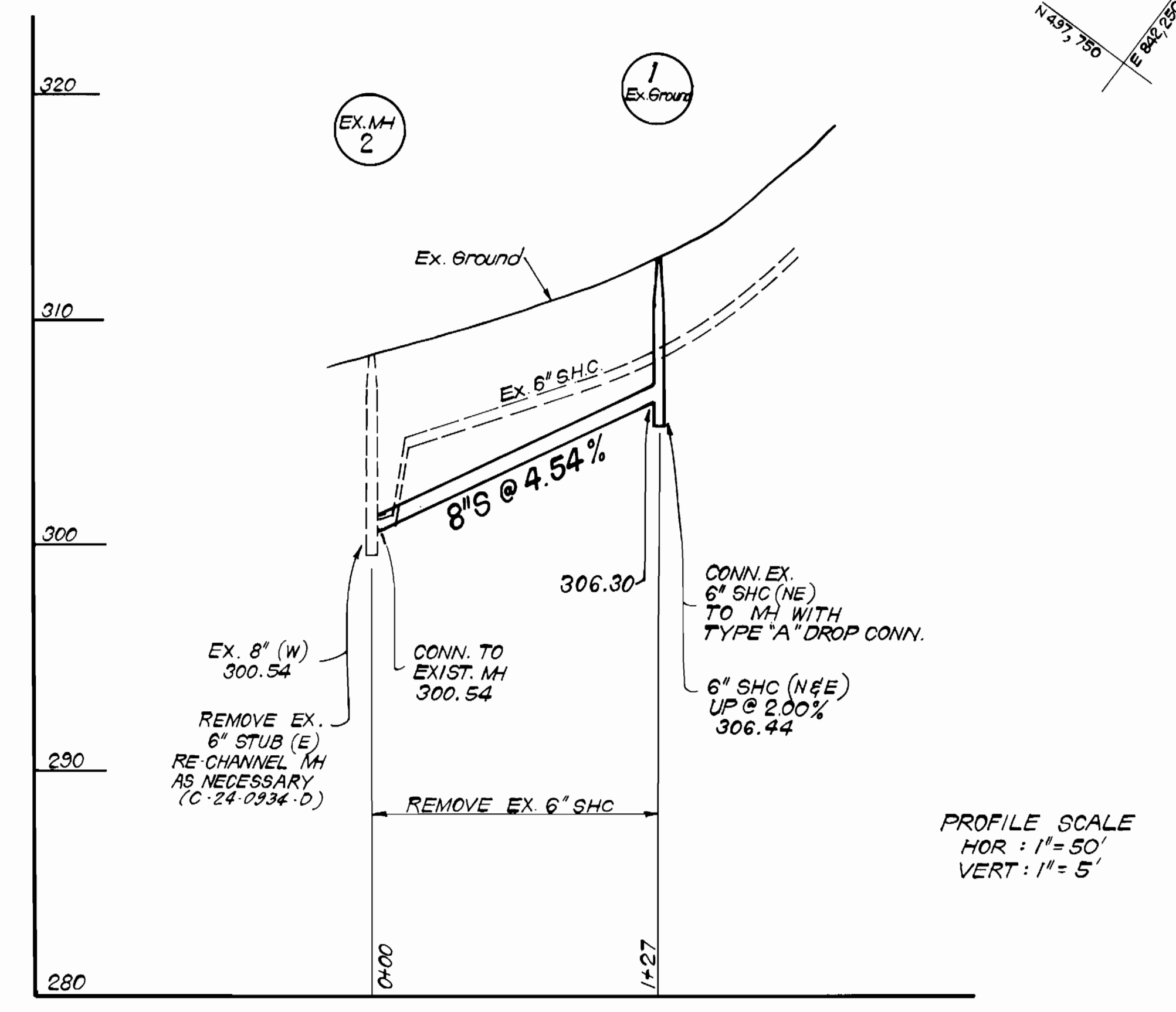
TYPE OF BUILDING	SINGLE FAMILY
NR. OF LOTS	1
NR. OF WHO'S	1
NR. OF SHC'S	2
DRAINAGE AREA	LITTLE PATUXENT

**GENERAL NOTES**

- Approximate location of existing mains are shown. The contractor shall take all necessary precautions to protect existing mains and services and maintain uninterrupted supply. Any damage incurred shall be repaired immediately to the satisfaction of the Inspector, at the contractor's expense.
- All horizontal controls are based on Maryland State Coordinates.
- All vertical controls are based on U.S.G.S. Datum.
- All pipe elevations shown are invert elevations.
- Clear all utilities by a minimum of 6" clear all poles by 2'-0" minimum or tunnel as required. Any cost incurred to the contractor for tunneling or bracing at poles shall be included in unit prices bid for excavation and backfill.
- For details not shown on the drawings use Howard County Standard Details.
- For materials and construction methods use Howard County Standard Specifications, Design Manual, Volume II. The Contractor shall have a copy of Volume II on the job.
- Contractor shall locate existing utilities a minimum of two (2) weeks in advance of construction operations in the vicinity of proposed utilities at his own expense.
- Contractor shall notify the following utilities or agencies at least five (5) working days before starting work shown on these plans.
  - State Highway Administration - 531-5533
  - Baltimore Gas & Electric Company - Contractor Services 561-2585
  - Baltimore Gas & Electric Company - Underground Damage Control 234-5621
  - Baltimore Gas & Electric Company - Trouble Shooting 236-9013
  - "Miss Utility" - 1-559-0100
  - Chesapeake & Potomac (C & P) Telephone Company - 725-9976
  - Colonial Pipeline Company - 795-1390
  - Bureau of Utilities Howard County - 992-2366
- Trees are to be protected from damage to maximum extent. Trees located within the construction strip are not to be removed or damaged by the contractor.
- Contractor shall remove trees, stumps, and roots along line of excavation as directed by the Inspector. Payment for such removal shall be included in the unit price bid for excavation and backfill.
- Place regulation "Men Working" and warning signs as required to comply with Maryland State Highway Administration Manual of Traffic Control for Highway Construction and Maintenance Operations.
- All water mains to be C.I.P. or D.I.P. unless otherwise noted.
- Top of all water mains to have a minimum of 3-1/2' cover unless otherwise noted.
- Valves adjacent to trees shall be strapped to trees.
- Block all fittings with concrete.
- Bury line elevations on fire hydrants shall be set to the elevations shown on the drawings. All fire hydrants shall be strapped and buttressed with concrete in accordance with standard details. Soil around the fire hydrant to be compacted in accordance with Section 5-16 of the Standard Specifications.
- All water house connections shall be for an inside meter setting.
- The contractor shall not operate any water main valves on the existing system.
- All sewer mains shall be C.S.P.X., V.C.P.X., P.V.C., or A.C.P. Class 2400 unless otherwise noted.
- The contractor shall provide a joint in all sewer mains within 2'-0" of exterior manhole wall.
- All manholes shall be 4'-0" inside diameter, unless otherwise noted.
- Water main and water house connection lines must have a minimum of one foot separation from the sanitary sewer and sewer house connections as they cross. Except at crossings, water and sewer lines shall have a minimum horizontal separation of 10'.
- For all Copper Water House Connections, utilize flared type fittings only.



- CONSTRUCTION SPECIFICATIONS:**
- Bales shall be placed at the top of a slope or on the contour and in a row with ends tightly abutting the adjacent bales.
  - Each bale shall be embedded in the soil a min. of 4" and placed so the bindings are horizontal.
  - Bales shall be securely anchored in place by either 2 stakes or re-bars driven thru the bale. The 1<sup>st</sup> stake in each bale shall be driven toward the previously laid bale at an angle to force the bales together. Stakes shall be driven flush with the bale.
  - Inspection shall be frequent and repair/replacement shall be made promptly as needed.
  - Bales shall be removed when they have served their usefulness so as not to block or impale storm flow or drainage.



Sediment Control Measures will be implemented in accordance with Article No. 15 of the Specifications & with this drawing.

REVIEWED FOR HOWARD SOIL CONSERVATION DISTRICT AND MEETS TECHNICAL REQUIREMENT.

SIGNATURE \_\_\_\_\_ DATE \_\_\_\_\_

U.S. SOIL CONSERVATION SERVICE

This Development Plan is approved for Soil Erosion and Sediment Control by the Howard Soil Conservation District.

APPROVED: \_\_\_\_\_

Howard S.C.D. DATE \_\_\_\_\_

QUANTITIES			
ITEM	PROPOSED	AS-BUILT	MATERIAL/SUPPLIER
8" SEWER	127 LF		
MANHOLES	1 EA.		
6" SHC	20 LF		
3/4" WHC	37 LF		
TYPE "A" DROP CONN.	1 EA.		

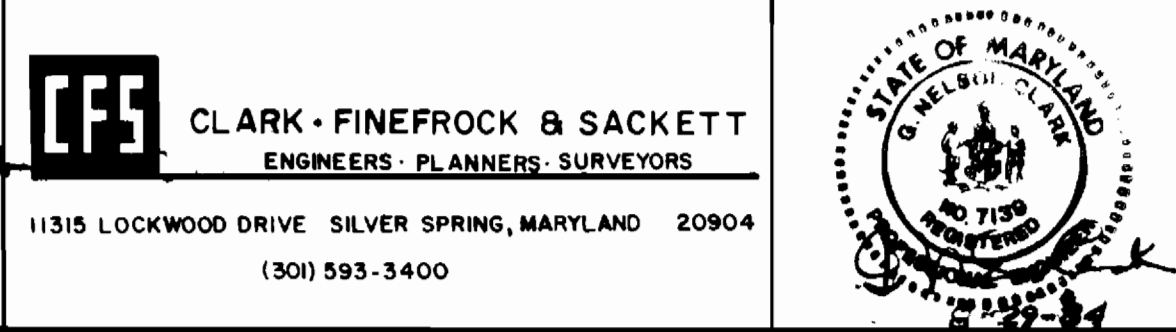
CUNDY SUBDIVISION  
LOT 10

DEPARTMENT OF PUBLIC WORKS  
HOWARD COUNTY, MARYLAND

George F. Nimmey 10-4-84  
DIRECTOR OF PUBLIC WORKS DATE

Richard M. Brunner 10-3-84  
CHIEF, BUREAU OF UTILITIES DATE

Clark, Fineprock & Sackett  
11315 LOCKWOOD DRIVE SILVER SPRING, MARYLAND 20904  
(301) 593-3400



DES:				
DRN:				
CHK:				
DATE:	BY	NO.	REVISION	DATE

PLAN AND PROFILE  
OF SEWER MAINS

600' SCALE MAP NO. 26 BLOCK NO. \_\_\_\_\_

CUNDY SUBDIVISION  
OWEN BROWN ROAD  
ELECTION DISTRICT No 6  
CONTRACT 24-1268-D

SCALE AS SHOWN  
SHEET 1 OF 1