

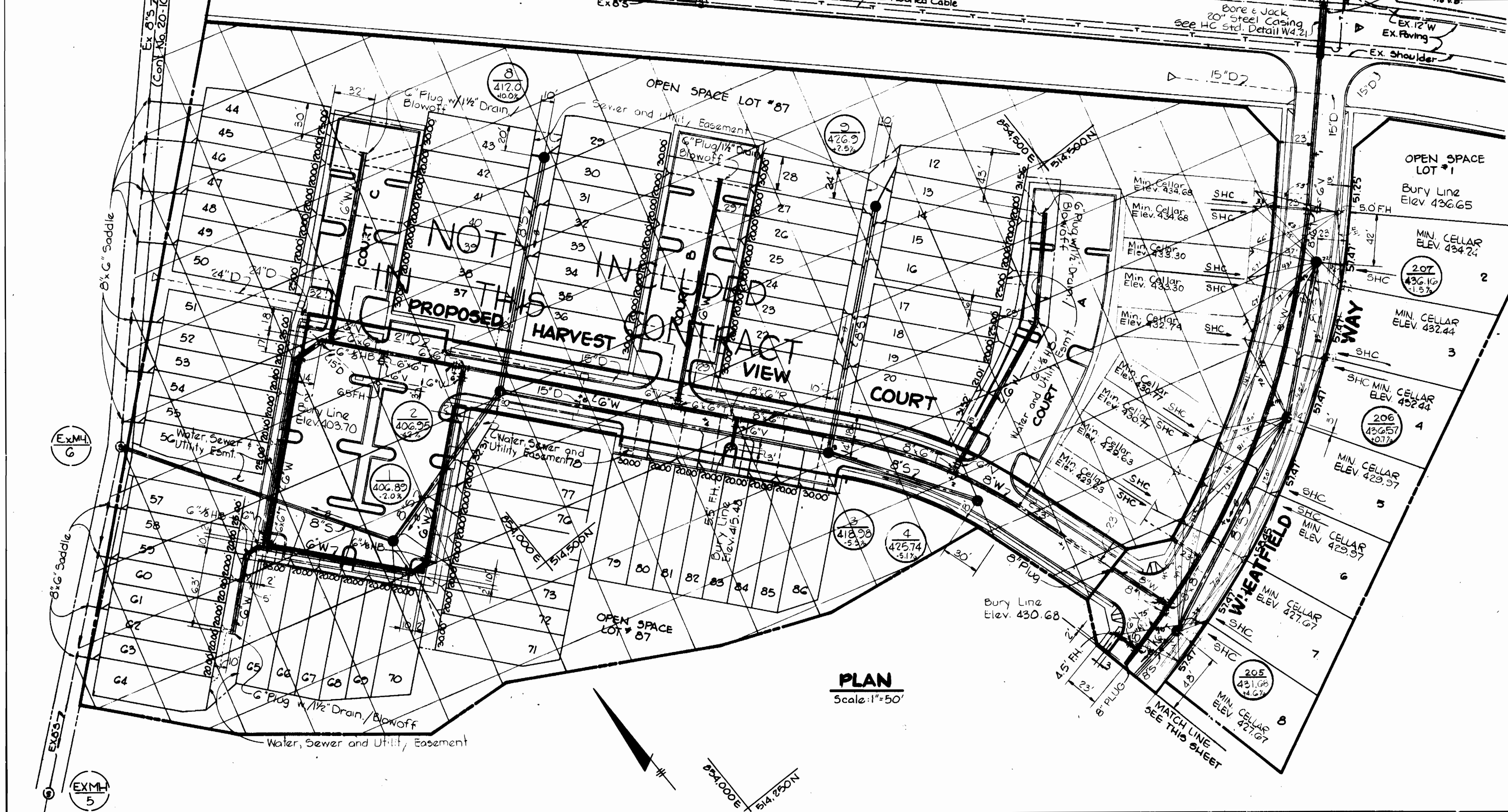
NUMBER OF LOTS ..... 16  
 BUILDING TYPE ..... SFA/BFD  
 NUMBER OF WHCS ..... 16  
 NUMBER OF SHCS ..... 16  
 DRAINAGE AREA ..... PATAPSCO

HOWARD SOIL CONSERVATION DISTRICT:  
 REVIEWED FOR HOWARD SOIL CONSERVATION DISTRICT  
 AND MEETS TECHNICAL REQUIREMENTS.  
*James M. ...* 12-23-85  
 U.S. SOIL CONSERVATION SERVICE DATE  
 THIS PLAN IS APPROVED FOR SOIL EROSION AND SEDIMENT  
 CONTROL BY THE HOWARD SOIL CONSERVATION DISTRICT.  
*John L. ...* 12-23-85  
 HOWARD SOIL CONSERVATION DISTRICT DATE

SEDIMENT CONTROL MEASURES FOR THIS CONTRACT WILL BE  
 IMPLEMENTED IN ACCORDANCE WITH ARTICLE 415 OF THE  
 HOWARD COUNTY STANDARD SPECIFICATIONS AND AS PER  
 ROAD CONSTRUCTION PLANS F-84-195  
 Note: Contractor shall test  
 pit existing 4" gas and  
 existing buried cable prior  
 to jacking 8" water under  
 Route 103.

WATER AND SEWER CODE  
 WATER NO. F 09  
 SEWER NO. 5750635

VICINITY MAP  
 SCALE 1" = 600'



PLAN  
 Scale 1" = 50'

- GENERAL NOTES
1. THE APPROXIMATE LOCATIONS OF EXISTING MAINS ARE SHOWN. THE CONTRACTOR SHALL TAKE ALL NECESSARY PRECAUTIONS TO PROTECT EXISTING UTILITIES AND TO MAINTAIN INTERFERED WITH UTILITIES DAMAGED BY CURBED DUE TO THE CONTRACTOR'S OPERATION SHALL BE REPAIRED IMMEDIATELY AT THE CONTRACTOR'S EXPENSE.
  2. ALL HORIZONTAL CONTROLS ARE BASED ON MARYLAND STATE COORDINATES.
  3. ALL VERTICAL CONTROLS ARE BASED ON U.S.G.S. DATUM.
  4. ALL PIPE ELEVATIONS SHOWN ARE INVERT ELEVATIONS.
  5. CLEAR ALL UTILITIES BY A MINIMUM OF 6". CLEAR ALL POLES BY 12" MINIMUM OR THREE AS REQUIRED. ANY COST INCURRED BY THE CONTRACTOR FOR SHIELDING OR BRACING AT POLES SHALL BE INCLUDED IN UNIT PRICES BID FOR EXCAVATION AND BACKFILL.
  6. FOR DETAILS NOT SHOWN ON THE DRAWINGS USE HOWARD COUNTY STANDARD DETAILS.
  7. FOR MATERIALS AND CONSTRUCTION METHODS USE HOWARD COUNTY STANDARD SPECIFICATIONS.
  8. CONTRACTOR SHALL LOCATE EXISTING UTILITIES A MINIMUM OF TWO (2) WEEKS IN ADVANCE OF CONSTRUCTION OPERATIONS IN THE VICINITY OF PROPOSED UTILITIES AT HIS OWN EXPENSE.
  9. CONTRACTOR SHALL NOTIFY THE FOLLOWING UTILITIES OR AGENCIES AT LEAST FIVE (5) WORKING DAYS BEFORE STARTING WORK SHOWN ON THESE PLANS:
    - STATE HIGHWAY ADMINISTRATION 531-5533
    - BALTIMORE GAS AND ELECTRIC COMPANY - UNDERGROUND ELECTRIC DISTRIBUTION CUSTOMER SERVICE 685-0123
    - BALTIMORE GAS AND ELECTRIC COMPANY - UNDERGROUND GAS DISTRIBUTION CUSTOMER SERVICE 685-0123
    - ENGINEER - "DAMAGE CONTROL" 234-5621
    - "MISS UTILITY" 1-559-0100
    - CHESAPEAKE AND POTOMAC (C&P) TELEPHONE COMPANY 745-9976
    - COLONIAL PIPELINE COMPANY 781-4641
    - BUREAU OF UTILITIES HOWARD COUNTY 992-2366
  10. TREES ARE TO BE PROTECTED FROM DAMAGE TO MAXIMUM EXTENT. TREES LOCATED WITHIN THE CONSTRUCTION STRIP ARE NOT TO BE REMOVED OR DAMAGED BY THE CONTRACTOR.
  11. CONTRACTOR SHALL REMOVE TREES, STUMPS, AND ROOTS ALONG THE LINE OF EXCAVATION AS DIRECTED BY THE ENGINEER. PAYMENT FOR SUCH REMOVAL SHALL BE INCLUDED IN THE UNIT PRICE BID FOR EXCAVATION & BACKFILL.
  12. PLACE REGULATION "MEN WORKING" AND WARNING SIGNS AS REQUIRED TO COMPLY WITH MARYLAND STATE HIGHWAY ADMINISTRATION MANUAL OF TRAFFIC CONTROL FOR HIGHWAY CONSTRUCTION AND MAINTENANCE OPERATIONS.
  13. ALL WATER MAINS TO BE C.I.P. OR D.I.P. UNLESS OTHERWISE NOTED.
  14. TOP OF ALL WATER MAINS TO HAVE A MINIMUM OF 3" COVER UNLESS OTHERWISE NOTED.
  15. VALVES ADJACENT TO TEES SHALL BE STRAPPED TO TEES.
  16. BLOCK ALL FITTINGS WITH CONCRETE.
  17. BURY LINE ELEVATIONS ON FIRE HYDRANTS SHALL BE SET TO THE ELEVATIONS SHOWN ON THE DRAWINGS. ALL FIRE HYDRANTS SHALL BE STRAPPED AND BUTTRESSED WITH CONCRETE IN ACCORDANCE WITH STANDARD DETAILS. SOIL AROUND THE FIRE HYDRANT TO BE COMPACTED IN ACCORDANCE WITH SECTION 10034100B OF THE STANDARD SPECIFICATIONS.
  18. ALL WATER HOUSE CONNECTIONS SHALL BE SET FOR INSIDE METER SETTINGS.
  19. THE CONTRACTOR SHALL NOT OPERATE ANY WATER MAIN VALVES ON THE EXISTING SYSTEM.
  20. ALL SEWER MAINS SHALL BE C.S.P.X., V.C.P.X., R.C.S.P., PVC OR ACP CLASS 2400 UNLESS OTHERWISE NOTED.
  21. THE CONTRACTOR SHALL PROVIDE A JOINT IN ALL SEWER MAINS WITHIN 2'-0" OF THE EXTERIOR MANHOLE WALLS.
  22. ALL MANHOLES SHALL BE 4'-0" INSIDE DIAMETER, UNLESS OTHERWISE NOTED.
  23. MANHOLES DESIGNATED W.T. IN PLAN AND PROFILE SHALL HAVE WATERTIGHT FRAME AND COVERS. STANDARD DETAIL G-5.52 WHERE WATERTIGHT MANHOLE FRAME AND COVER IS USED. SET TOP OF FRAME 1'-6" ABOVE FINISHED GRADE.
  24. HOUSES WITH THE SYMBOL C.N.S. INDICATES THAT CELLAR CAN NOT BE SERVED.
  25. NO PIPE SHALL BE LAID UNTIL LINES OF EXCAVATION HAVE BEEN BROUGHT TO SUBGRADE.
  26. FOR ALL COPPER WATER HOUSE CONNECTIONS UTILIZE FLARE TYPE FITTINGS ONLY.
  27. ALL WATER HOUSE CONNECTIONS SHALL BE SET FOR INSIDE METER SETTING.

QUANTITIES			
ITEM	PROPOSED	AS-BUILT	SUPPLIER
8" WATER	569 LF	658 LF	A & P SUPPLIES
6" WATER	45 LF	54 LF	" "
20" STEEL CASING	40'	48'	" "
8" VALVES	2 EA	2 EA	" "
1" WHC	213 LF	240 LF	" "
1/2" WHC	265 LF	240 LF	" "
FIRE HYDRANTS	2 EA	2 EA	" "
MANHOLES	80 VF	6 EA	YORK SUPPLIES
8" SEWER	1447 LF	458 LF	A & P SUPPLIES
6" SHC	733 LF	254 LF	" "
12" x 8" T.S. & V	1	"	" "

DEPARTMENT OF PUBLIC WORKS  
 HOWARD COUNTY, MARYLAND  
*John F. Neuman* 12-31-85  
 DIRECTOR OF PUBLIC WORKS DATE  
*Robert ...*  
 CHIEF, BUREAU OF UTILITIES DATE

TRACY, SCHULTE  
 & ASSOCIATES INC.  
 planning architecture engineering  
 8450 Baltimore National Pike Suite 34  
 Ellicott City, Maryland 21043



DES. SUB					
DRN. REV.					
CHK. JKT	J.L.S.	2	ADDED 2" V-BANDS @ WHEATFIELD WAY & 103	10-21-84	
DATE	7-20-84		ADDED SHC'S @ WHEATFIELD WAY	7-25-84	
BY	NO		REVISION	DATE	

PLAN OF  
 WATER AND SEWER MAINS

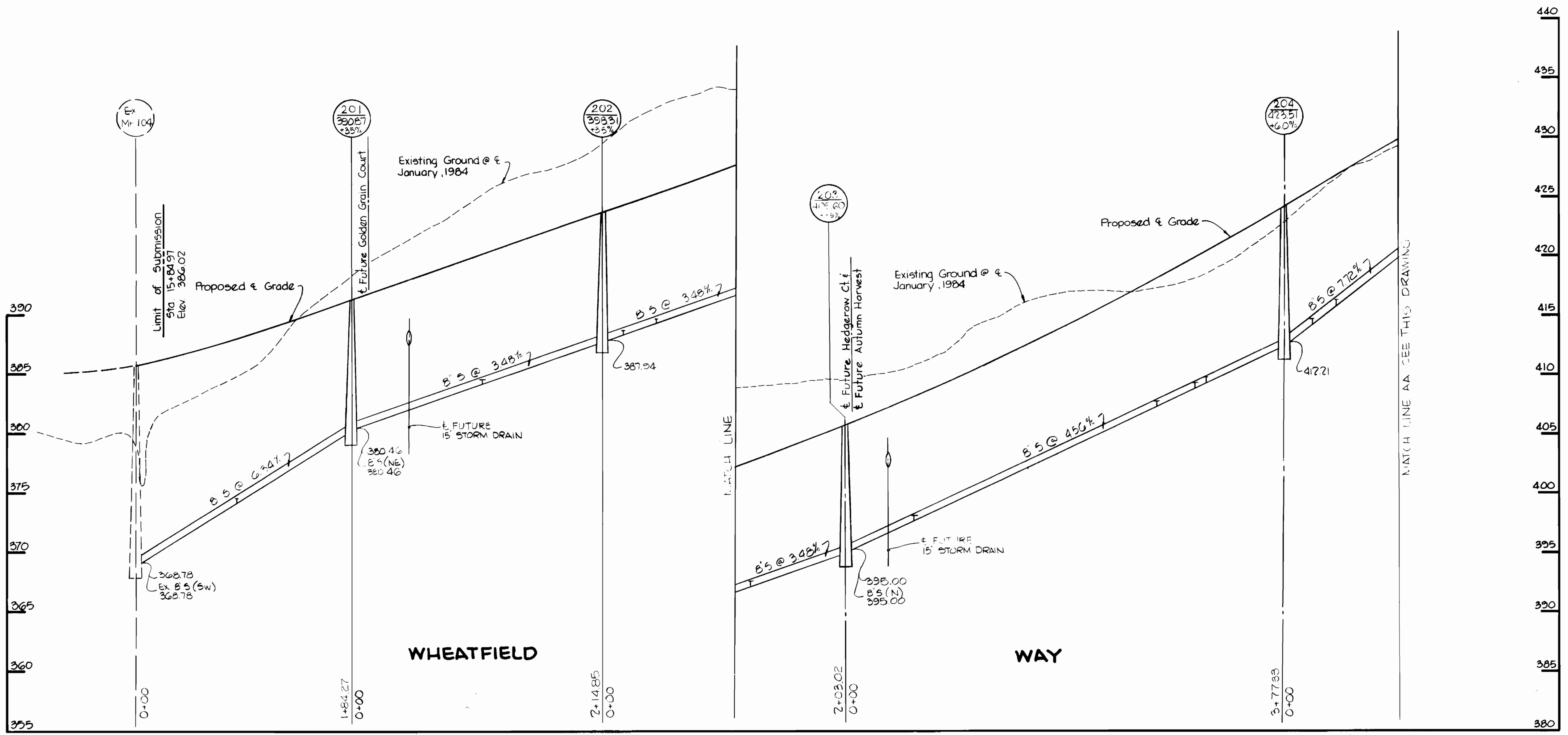
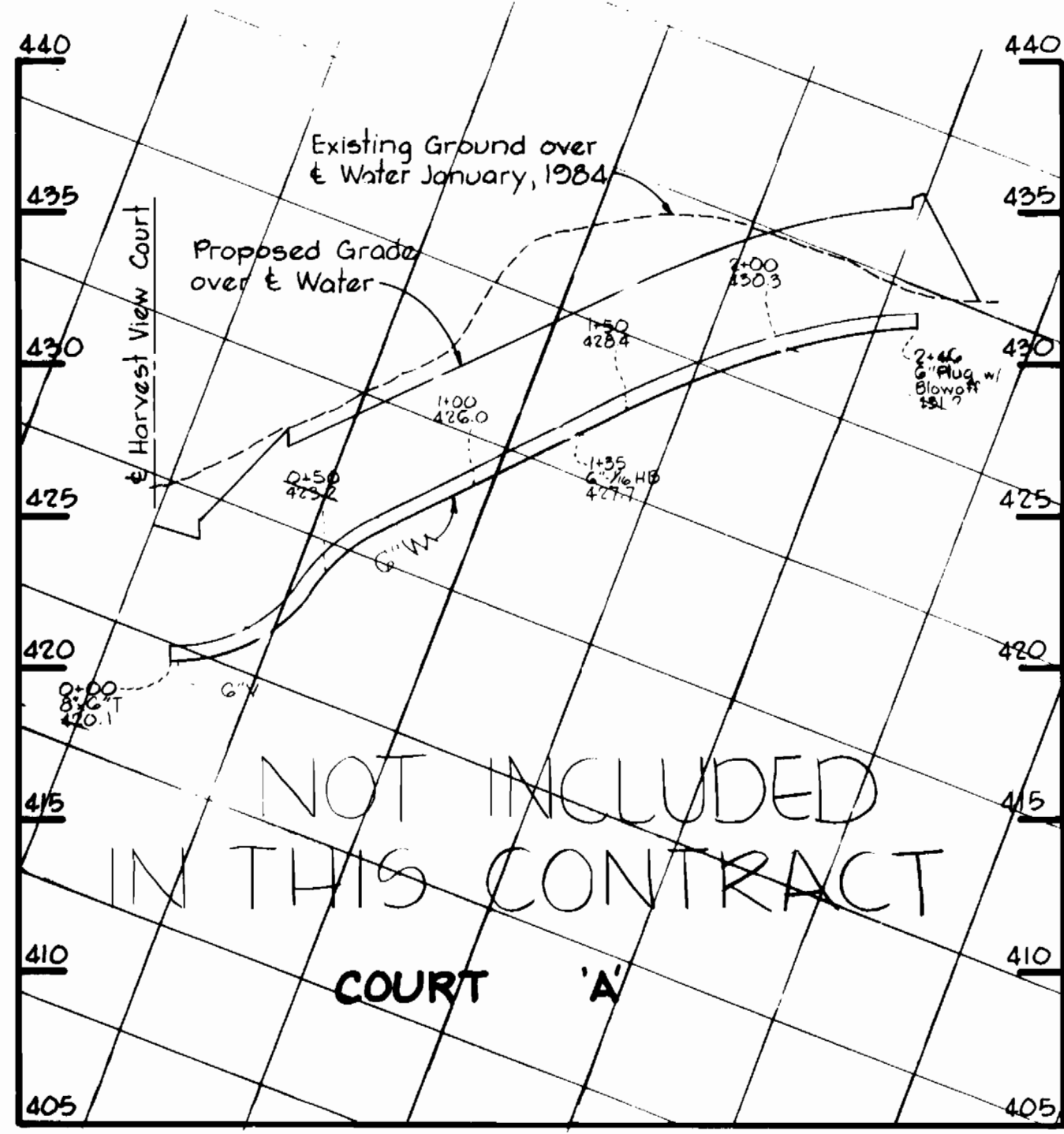
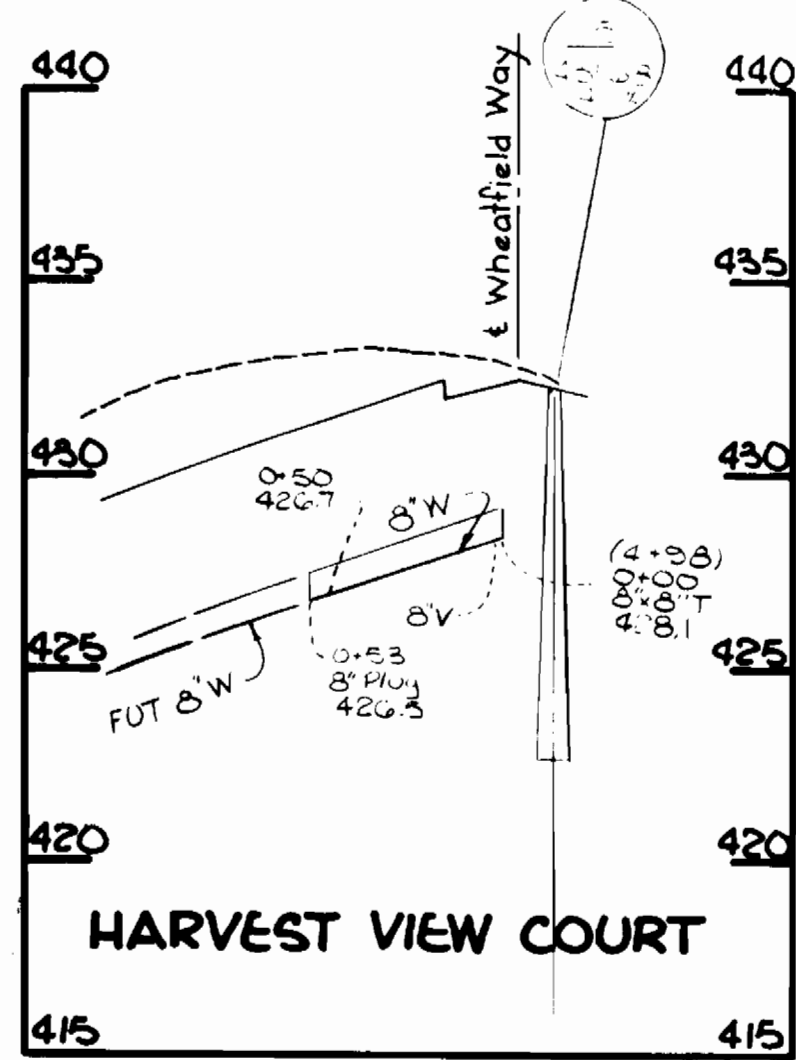
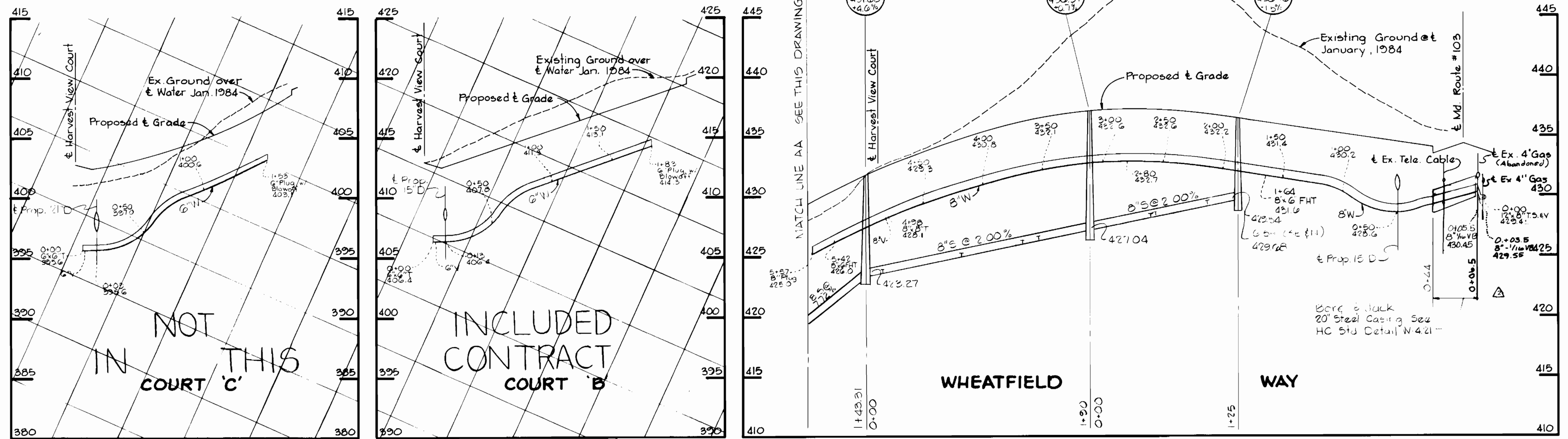
LONG GATE  
 SECTION I, AREA I  
 ELECTION DISTRICT NO. 2  
 CONTRACT NO. 24-1261-D

SCALE  
 1" = 50'  
 SHEET  
 1 OF 2



**SEWER HOUSE CONNECTION  
INVERT ELEVATION AT PROPERTY LINE**

STATION	LOT	INVERT
<b>MANHOLE #205 -</b>		
0+14 R	7/5	423.91
0+77 L	114/115	426.53
1+30 R	5/6	426.21
1+43 L	112/113	427.27
<b>MANHOLE #206</b>		
0+51 R	3/4	428.50
0+54 L	1/1	429.04
0+88 L	109/110	430.00
1+207 R	2	430.14
1+207 L	107/108	430.98
<b>MANHOLE #207</b>		
0+05 R	32	379.37
<b>MANHOLE #201</b>		
1+12 R	24/25	384.84
<b>MANHOLE #202</b>		
0+22 L	44/45	389.55
0+49 R	20/21	390.07
1+30 R	19	392.92
<b>MANHOLE #203</b>		
0+50 R	18	398.15
1+57 L	52/53	402.90
1+76 R	16/17	403.49
2+65 R	14/15	407.54
2+98 L	54/55	409.31
3+06 R	12/13	409.41
<b>MANHOLE #204</b>		
0+24 L	56/57	414.88
0+44 R	10/11	416.03



**PROFILES** Scale: Horiz. 1"=50'  
Vert. 1"=5'

DEPARTMENT OF PUBLIC WORKS  
HOWARD COUNTY, MARYLAND  
Director: *Steve F. Nalley* 12-21-85  
Chief, Bureau of Engineering: *Robert W. Wood* 12/21/85  
Chief, Bureau of Utilities: *Robert W. Wood* 12/21/85  
Chief, Land Development Div.: *Robert W. Wood* 12/21/85

TRACY, SCHULTE  
& ASSOCIATES INC.  
planning architecture engineering  
8450 Baltimore National Pike Suite 34  
Ellicott City, Maryland 21043



DES: SJB			
DRN: RJW			
CHK: JKT	BLS 2	ADDED 2 V BENDS AT WHEATFIELD WAY @ 103	10/21/85
		Added SHCS on Wheatfield Way	7-16-85
DATE: 7-20-84	BY NO.	REVISION	DATE

PROFILES OF  
WATER AND SEWER MAINS

LONG GATE  
SECTION I AREA I  
ELECTION DISTRICT NO. 2  
CONTRACT NO. 24-1261-D

SCALE AS SHOWN  
SHEET 2 OF 2