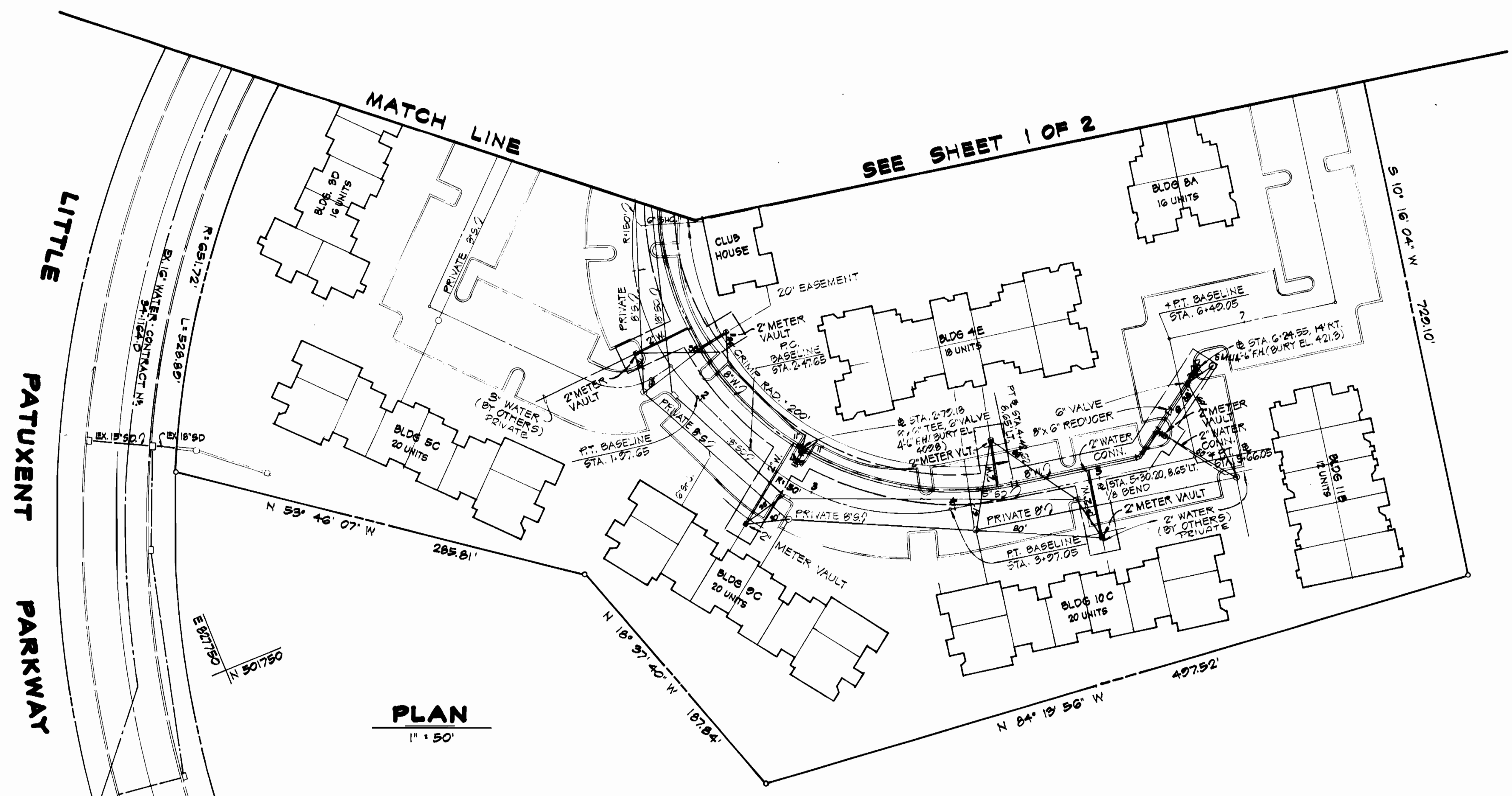


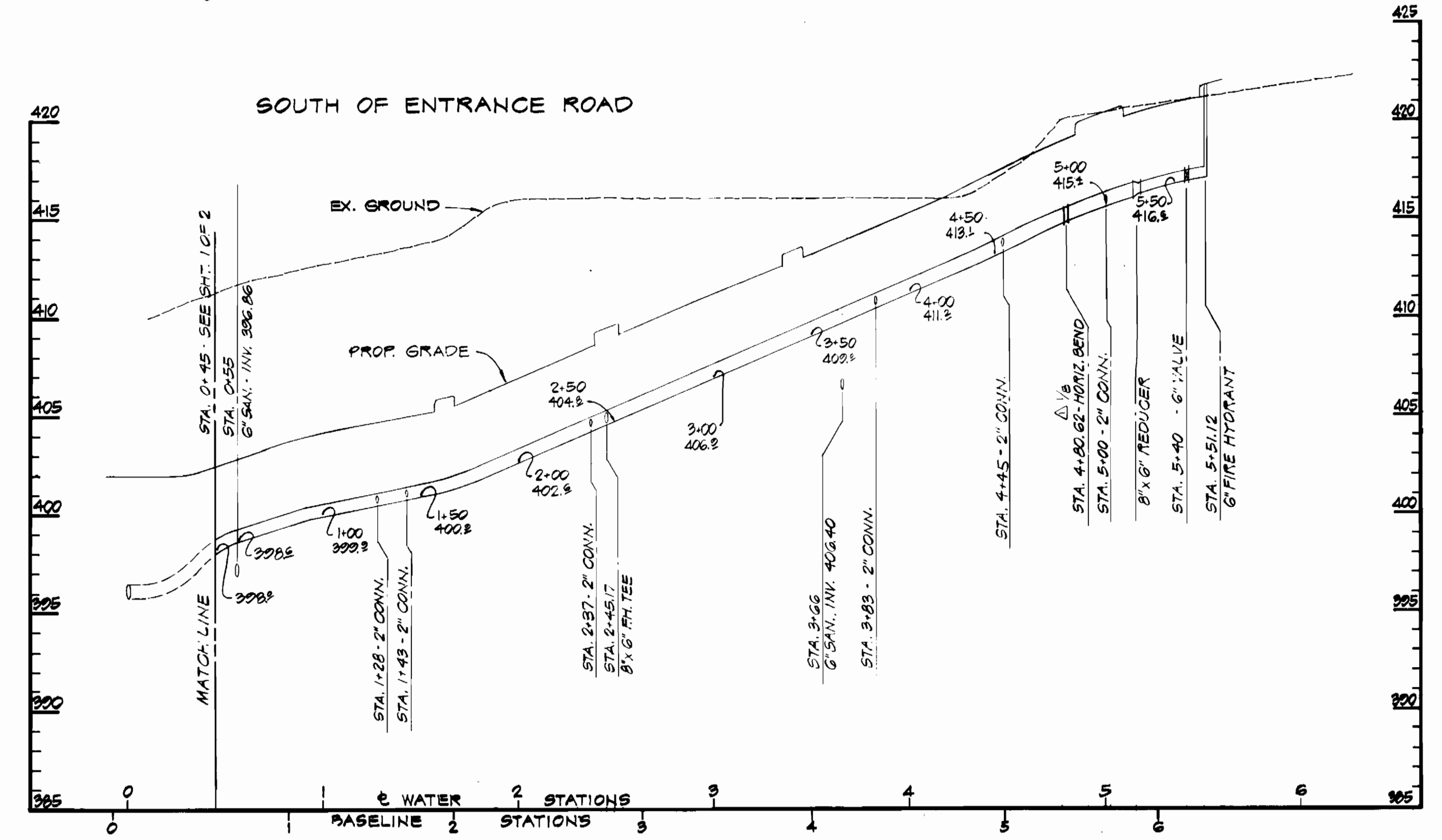
N 50°22'50"
E 10°37'50"

N 50°17'50"
E 10°37'50"



PLAN
1" = 50'

SOUTH OF ENTRANCE ROAD



SURVEY CONTROL DATA

TOOL	I-COM	BASELINE STATION/OFFSET		COORDINATES NORTH EAST		WATERLINE STATION/OFFSET		DESCRIPTION
		STATION	OFFSET	NORTH	EAST	STATION	OFFSET	
		1+97.65		501800.46	828116.24			P.T. BASELINE
		2+47.65		501754.94	828195.50			P.C. BASELINE
		2+72.16	28.90' LT.	501740.34	828170.26	2+45.17		8" x 6" TEE
		2+72.60	14.00' LT.	501734.33	828162.29	2+45.17	9.91' RT.	6" FIRE HYDRANT
		2+97.05		501694.55	828247.18			P.T. BASELINE
		4+42.62	8.65' LT.	501624.94	828283.56	3+93.04		P.T. WATERLINE
		5+30.20	8.65' LT.	501649.32	828379.74	4+80.62		1/8" BEND
		5+66.05		501624.42	828415.46			P.I. BASELINE
		6+24.55	14.00' RT.	501689.49	828497.68	5+51.12		6" FIRE HYDRANT
		6+49.05		501716.09	828428.27			P.I. BASELINE

DEPARTMENT OF PUBLIC WORKS
HOWARD COUNTY, MARYLAND

Robert F. Neuman 10-8-84
DIRECTOR OF PUBLIC WORKS - DATE

Robert F. Neuman 10-5-84
CHIEF OF PUBLIC WORKS - DATE

William B. Riley 10-8-84
CHIEF, BUREAU OF ENGINEERING - DATE

Charles J. Davis 10-8-84
CHIEF, LAND DEVELOPMENT DIVISION - DATE

DAFT - McCUNE - WALKER, INC.

AND PLANNING ENGINEERS
LANDS AND ARCHITECTS
INCORPORATED
541 N. W. 11th St.
TOWSON, MD 21284



DESIGN BY: J.W.R.G.
DRAWN BY: M.G.S.
CHECKED BY: J.W.R.G.
DATE: JULY 17, 1984

PMW BY: NO. 4
ADDED 1/8" BEND IN PROFILE
REVISION
DATE: 11-16-84

PLAN AND PROFILE OF WATER MAINS

600 SCALE MAP NO. 35 BLOCK NO. 1

COLUMBIA VILLAGE OF HICKORY RIDGE

SECTION 3 AREA G
PARCEL 'J'
ELECTION DISTRICT NO. 5
CONTRACT NO. 44-1235-D

SCALE AS SHOWN
SHEET 2 OF 2