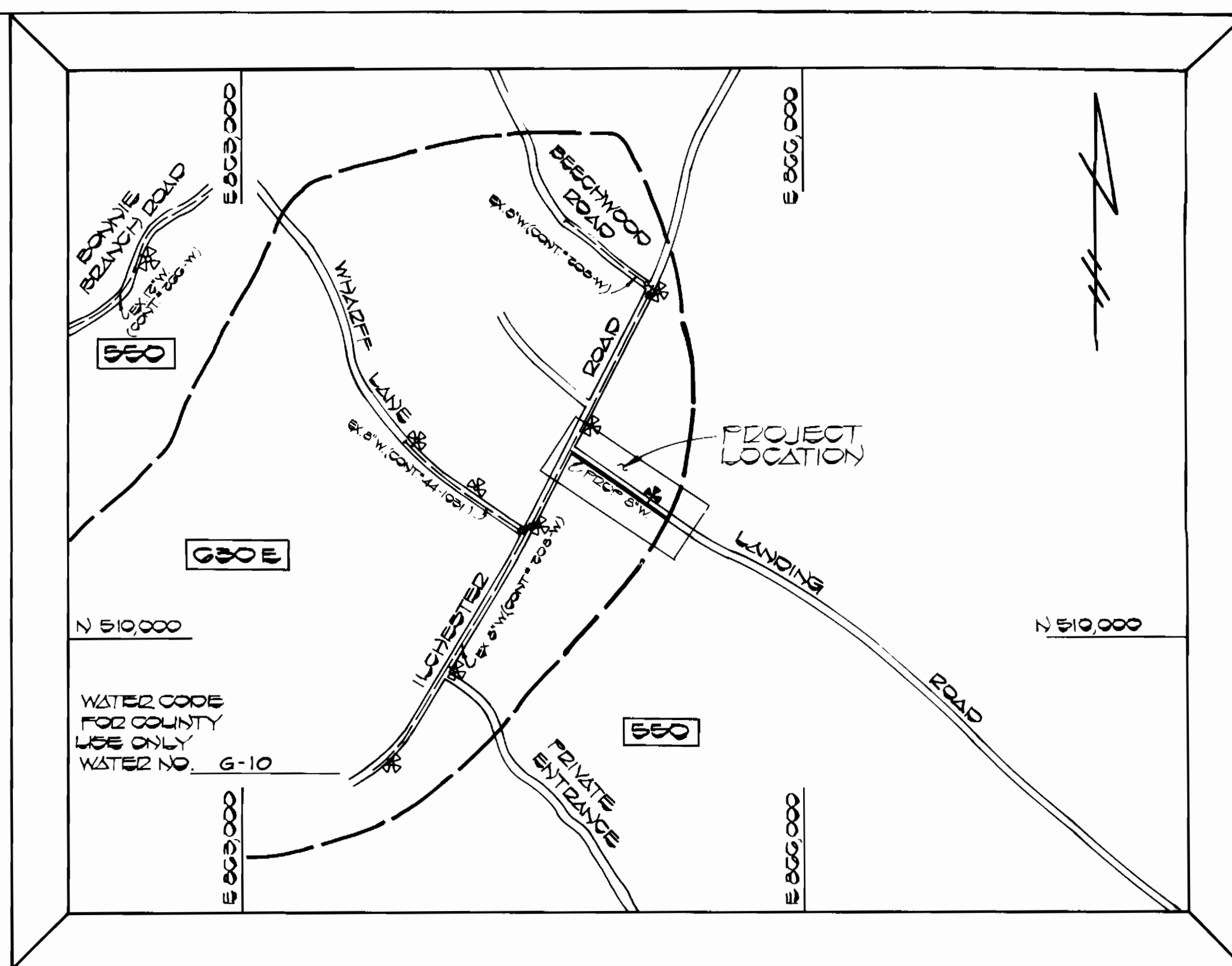


BENCH MARKS

- B.M.#1 ELEV. 470.00
X-CUT CORNER OF END WALL
NORTHEAST CORNER LICHESTER
AND LANDING ROADS
- B.M.#2 ELEV. 450.50
2" SPIKE SET IN G#1451005
85' NORTHWEST OF P.L.-3
- Property of JOHN HAVARD DUMALL JR
ELIZABETH ANN DUMALL
GEO/T-41
T.M.#31 P#120
- Property of WILLIAM E ZAIOSZ & MARGARET E ZAIOSZ
200/0
T.M.#31 P#157

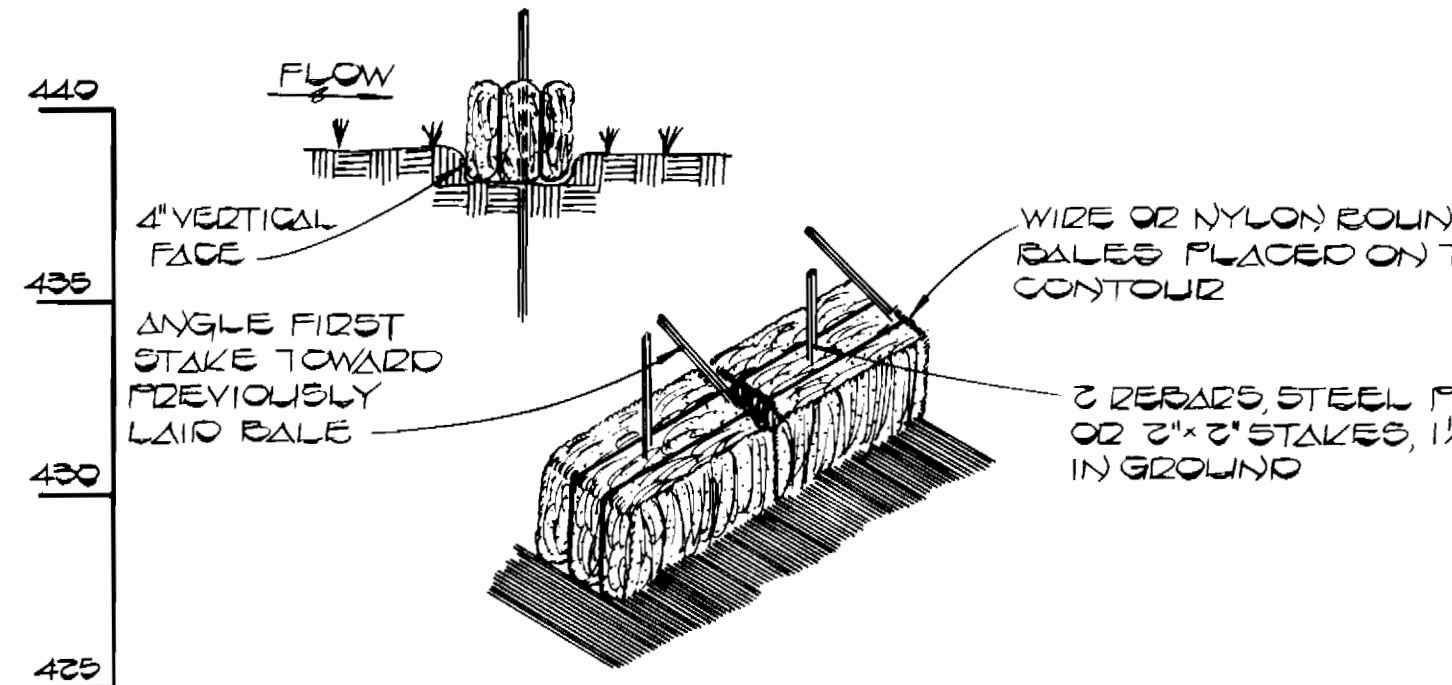
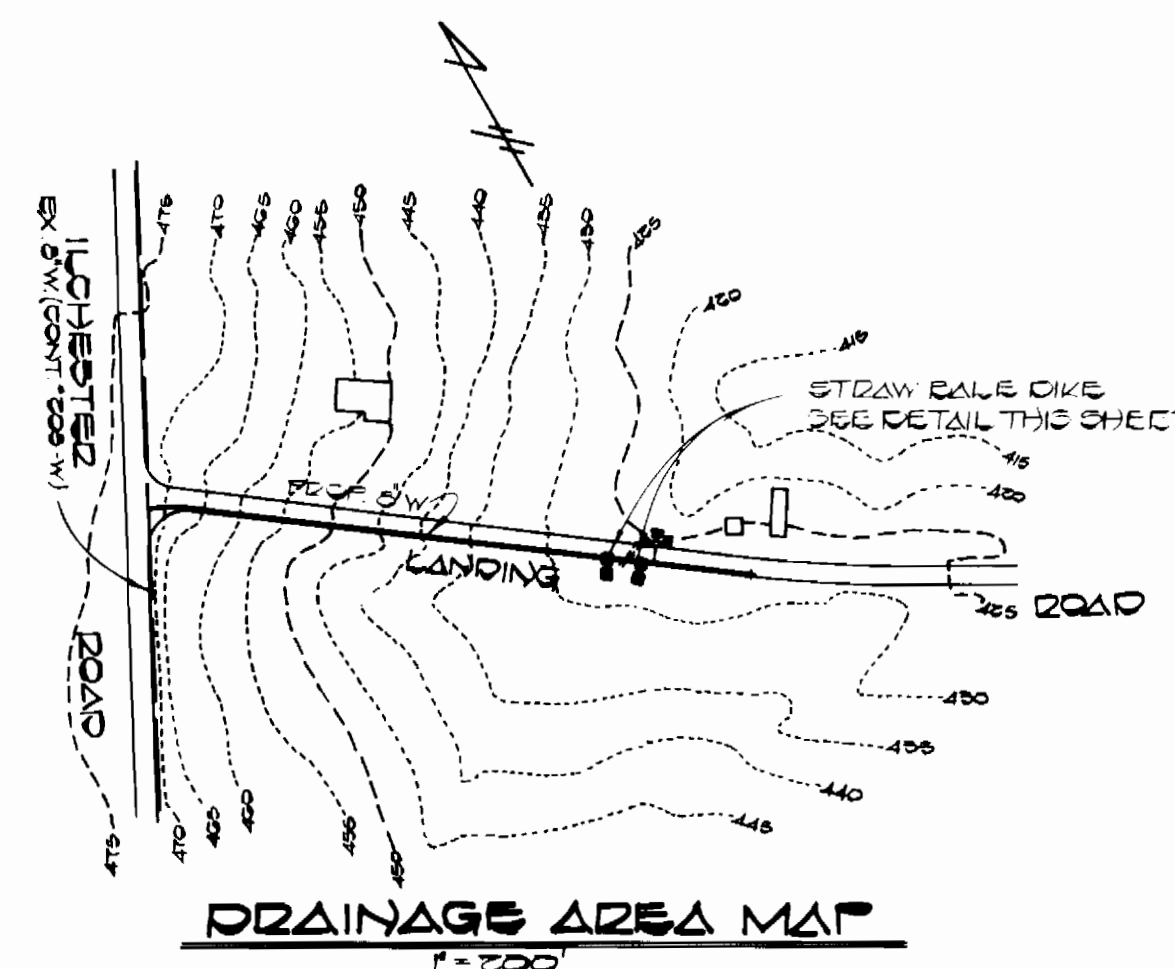


TYPE OF BUILDINGS: RESIDENTIAL
 NUMBER OF PARCELS: 1
 NO OF WATER HOUSE CONNECTIONS: 1
 DRAINAGE AREA: 2.47 AC

VICINITY MAP
 Scale: 1" = 600'

GENERAL NOTES

- APPROXIMATE LOCATION OF EXISTING MAINS ARE SHOWN. THE CONTRACTOR SHALL TAKE ALL NECESSARY PRECAUTIONS TO PROTECT EXISTING MAINS AND SERVICES AND MAINTAIN UNINTERRUPTED SUPPLY ANY DAMAGE INCURRED SHALL BE REPAIRED IMMEDIATELY TO THE SATISFACTION OF THE ENGINEER, AT THE CONTRACTOR'S EXPENSE.
- ALL HORIZONTAL CONTROLS ARE BASED ON MARYLAND STATE COORDINATES.
- ALL VERTICAL CONTROLS ARE BASED ON U.S.G.S. DATUM.
- ALL PIPE ELEVATIONS SHOWN ARE INVERT ELEVATIONS.
- CLEAR ALL UTILITIES BY A MINIMUM OF 6" CLEAR ALL POLES BY 2'-0" MINIMUM OR TUNNEL AS REQUIRED. THE OWNER HAS CONTACTED THE UTILITIES COMPANIES AND HAS MADE ARRANGEMENTS FOR BRACING OF POLES AS SHOWN ON THE DRAWINGS. IN THE EVENT THE CONTRACTOR'S WORK REQUIRES THE BRACING OF ADDITIONAL POLES, ANY COST INCURRED BY THE OWNER FOR THE BRACING OF ADDITIONAL POLES OR DAMAGES SHALL BE DEDUCTED FROM MONEY OWED THE CONTRACTOR. THE CONTRACTOR SHALL COORDINATE WITH THE UTILITY COMPANIES TO SCHEDULE THE BRACING OF THE POLES.
- ALL FITTINGS SHALL BE BUTTRESSED OR ANCHORED WITH CONCRETE IN ACCORDANCE WITH THE STANDARD DETAILS UNLESS OTHERWISE PROVIDED FOR ON THE DRAWINGS.
- CONTRACTOR SHALL NOTIFY FOLLOWING UTILITIES OR AGENCIES AT LEAST FIVE (5) WORKING DAYS SHOWN ON THESE PLANS:
 - BALTIMORE GAS AND ELECTRIC CO. - CONTRACTOR SERVICES - (561-2585)
 - BALTIMORE GAS AND ELECTRIC CO. - UNDER-GROUND DAMAGE CONTROL - (234-5621)
 - BALTIMORE GAS AND ELECTRIC CO. - TROUBLE SHOOTING - (298-9013)
 - "MISS UTILITY" - (1-559-0100)
 - CHESAPEAKE & POTOMAC TELEPHONE COMPANY - (795-1390)
 - BUREAU OF UTILITIES, HOWARD COUNTY - (992-2366)
- TREES AND SHRUBS ARE TO BE PROTECTED FROM DAMAGE TO MAXIMUM EXTENT. TREES AND SHRUBS LOCATED WITHIN THE CONSTRUCTION STRIP ARE NOT TO BE REMOVED OR DAMAGED BY THE CONTRACTOR.
- CONTRACTOR SHALL REMOVE TREES, STUMPS AND ROOTS ALONG LINE OF EXCAVATION AS DIRECTED BY THE ENGINEER. PAYMENT FOR SUCH REMOVAL SHALL BE INCLUDED IN THE UNIT PRICE BID FOR THE CONSTRUCTION OF THE MAIN.
- PLACE REGULATION "MEN WORKING" AND WARNING SIGNS AS REQUIRED TO COMPLY WITH MARYLAND STATE HIGHWAY ADMINISTRATION MANUAL OF TRAFFIC CONTROL FOR HIGHWAY CONSTRUCTION AND MAINTENANCE OPERATIONS.
- ALL WATER MAINS TO BE D.I.P. UNLESS OTHERWISE NOTED.
- VALVES ADJACENT TO TEES SHALL BE STRAPPED TO TEES.
- FOR DETAILS NOT SHOWN ON THE DRAWINGS AND FOR MATERIALS AND CONSTRUCTION METHODS, USE HOWARD COUNTY DESIGN MANUAL, VOLUME IV, STANDARD SPECIFICATIONS AND DETAILS FOR CONSTRUCTION. THE CONTRACTOR SHALL HAVE A COPY OF VOLUME IV ON THE JOB.
- FOR ALL COPPER WATER HOUSE CONNECTIONS, UTILIZE FLARED TYPE FITTINGS ONLY.
- ALL WATER HOUSE CONNECTIONS SHALL BE FOR INSIDE METER SETTING.
- WATER MAIN AND WATER HOUSE CONNECTION LINES MUST BE PLACED SO AS TO HAVE AT LEAST ONE (1) FOOT SEPARATION FROM THE SEWER MAIN OR SEWER HOUSE CONNECTION AS THEY PASS ABOUT IT.
- TOP OF WATER MAINS TO HAVE A MINIMUM OF 3'-6" COVER UNLESS OTHERWISE NOTED.
- THE CONTRACTOR SHALL NOT OPERATE ANY WATER MAIN VALVES ON THE EXISTING SYSTEM.
- FIRE HYDRANTS SHALL BE SET TO THE BURY LINE ELEVATIONS SHOWN ON THE DRAWINGS. ALL FIRE HYDRANTS SHALL BE STRAPPED AND BUTTRESSED WITH CONCRETE IN ACCORDANCE WITH STANDARD DETAILS. SOIL AROUND THE FIRE HYDRANT SHALL BE COMPACTED IN ACCORDANCE WITH SECTION 1003 THE STANDARD SPECIFICATIONS.
- WHERE TEST PITS HAVE BEEN MADE ON EXISTING UTILITIES, THEY ARE NOTED BY THE SYMBOL [] AT THE LOCATION OF THE TEST PIT. A NOTE OR NOTES CONTAINING THE RESULTS OF THE TEST PIT OR PITS IS INCLUDED ON THE DRAWINGS. EXISTING UTILITIES IN THE VICINITY OF THE PROPOSED WORK FOR WHICH TEST PITS HAVE NOT BEEN DUG SHALL BE LOCATED BY THE CONTRACTOR TWO WEEKS IN ADVANCE OF CONSTRUCTION OPERATIONS AT HIS OWN EXPENSE.



STRAW BALE DIKE
 NO SCALE

STABILIZATION NOTES
 FOLLOWING INITIAL SOIL DISTURBANCE OR REDISTURBANCE, PERMANENT OR TEMPORARY STABILIZATION SHALL BE COMPLETED WITHIN:
 1. 7 CALENDAR DAYS FOR ALL PERIMETER SEDIMENT CONTROL STRUCTURES, DYES, SWALES, DITCHES, PERIMETER SLOPES AND ALL SLOPES GREATER THAN 3:1
 2. 14 DAYS AS TO ALL OTHER DISTURBED OR GRADED AREAS ON THE PROJECT SITE.

QUANTITIES

ITEM	EST'D	AS-BUILT	SUPPLIER
8" WATER	600 L.F.	602 DIP	A.P. WATER
6" WATER	30 L.F.	30' DIP	A.P. WATER
FIRE HYD.	1 EA.	1	MUELLER
3/4" WFG	25 L.F.	28'	A.P. WATER
6" STAFFING SLOTTED VALVE	1 EA.	1	A.P. WATER

DEPARTMENT OF PUBLIC WORKS
 HOWARD COUNTY, MARYLAND

Director of Public Works: [Signature]
 Chief Bureau of Engineering: [Signature]
 Chief Bureau of Utilities: [Signature]

FISHER, COLLINS AND CARTER, INC.
 CONSULTING ENGINEERS AND LAND SURVEYORS
 8388 COURT AVENUE
 ELLICOTT CITY, MARYLAND 21043
 461-2855

TERRELL A. FISHER

DES: D.B.S.
 DRN: D.B.S.
 CHK: T.A.F.
 DATE: 6-4-84

ADD STABILIZATION NOTES
 REVISION

PLAN, PROFILE AND DETAILS
 WATER MAINS

LANDING ROAD WATER MAIN
 CAPITAL PROJECT W-8684
 CONTRACT NO. 44-1245
 FIRST ELECTION DISTRICT
 HOWARD COUNTY, MARYLAND

SCALE AS SHOWN
 SHEET 1 OF 1