

GENERAL NOTES

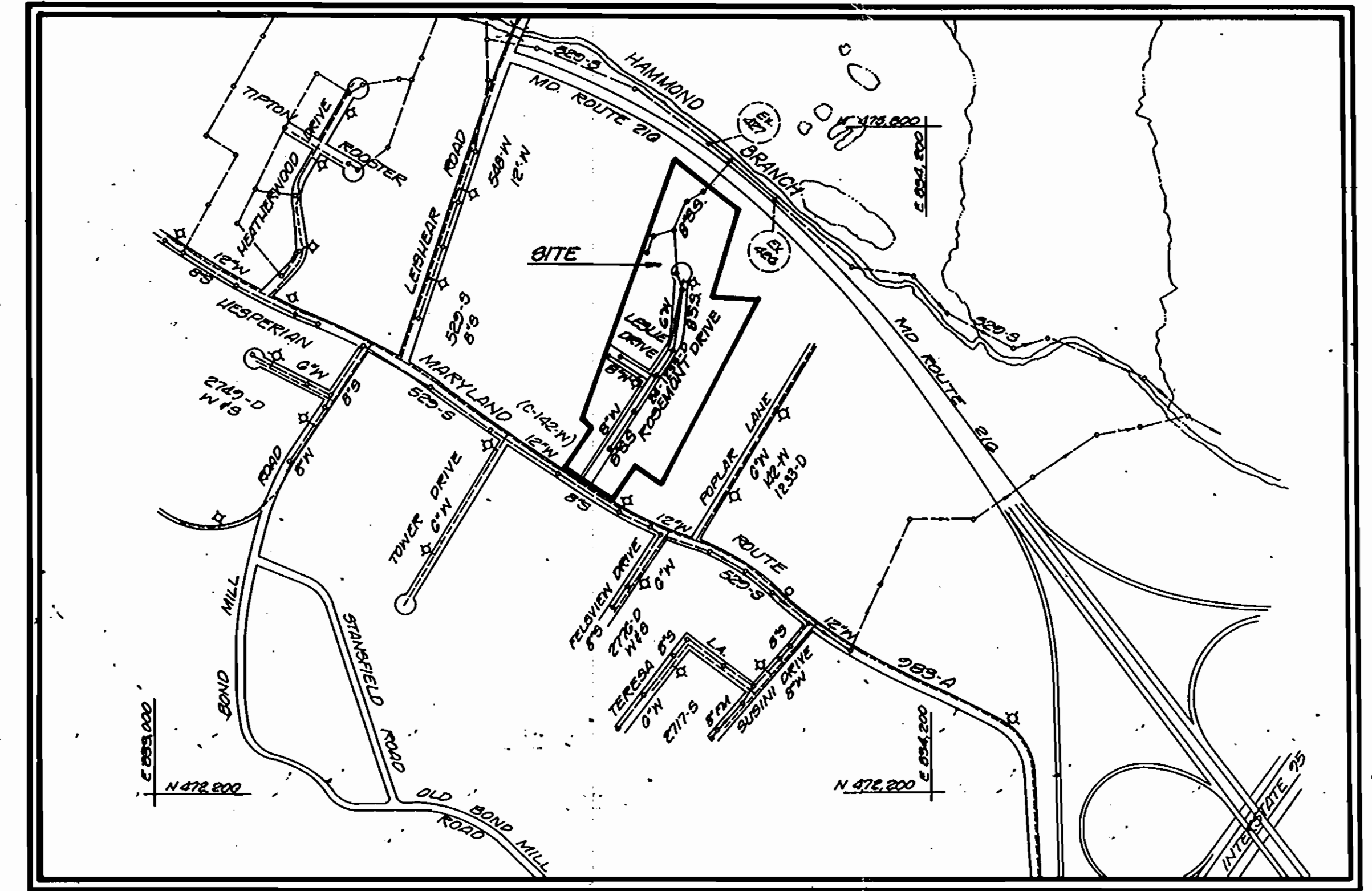
- Approximate location of existing mains are shown. The contractor shall take all necessary precautions to protect existing mains and services and maintain uninterrupted supply. Any damage incurred shall be repaired immediately to the satisfaction of the Engineer at the Contractor's expense.
- All horizontal controls are based on Maryland State Coordinates.
- All vertical controls are based on U.S.G.S. data.
- All pipe elevations shown are invert elevations.
- Clear all utilities by a minimum of 6". Clear all poles by 2'-0" minimum or tunnel as required. The owner has contacted the utility companies and has made arrangements for bracing of poles as shown on the drawings. In the event the contractor's work requires the bracing of additional poles, any cost incurred by the owner for the bracing of additional poles or damages shall be deducted from money owed the contractor. The contractor shall coordinate with the utility companies to schedule the bracing of the poles.
- For details not shown on the drawings, and for materials and construction methods, use Howard County Design Manual, Volume IV, Standard Specifications and Details for Construction. The contractor shall have a copy of Volume IV on the job.
- Where test pits have been made on existing utilities, they are noted by the symbol at the location of the test pit. A note or notes containing the results of the test pit or pits is included on the drawings. Existing utilities in the vicinity of the proposed work for which test pits have not been dug shall be located by the contractor two weeks in advance of construction operations at his own expense.
- Contractor shall notify the following utilities or agencies at least five working days before starting work shown on these plans:
 State Highway Administration - 531-5533
 Baltimore Gas & Electric Co. - Contractor Services 561-2585
 Baltimore Gas & Electric Co. Under Ground Damage Control - 234-5621
 Baltimore Gas & Electric Co. Trouble Shooting - 298-9013
 Miss Utility - 1-559-0100
 Colonial Pipeline Co. - 795-1390
 Bureau of Utilities, Howard County Department of Public Works - 992-2366
- Trees and shrubs are to be protected from damage to maximum extent. Trees and shrubs located within the construction strip are not to be removed or damaged by the contractor.
- Contractor shall remove trees, stumps and roots along line of excavation. Payment for such removal shall be included in the unit price bid for construction of the main.
- No work shall commence prior to approval of Plan 24-123-D and installation of the sediment controls specified therein.
- Water resources permit required for this project.

WATER NOTES

- All water mains to be D.I.P. unless otherwise noted.
- Tops of all water mains to have a minimum of 3-1/2' cover unless otherwise noted.
- Valves adjacent to tees shall be strapped to tees.
- All fittings shall be buttressed or anchored with concrete in accordance with the Standard Details unless otherwise provided for on the drawings.
- Fire hydrants shall be set to the bury line elevations shown on the drawings. All fire hydrants shall be strapped end buttressed with concrete in accordance with Standard Details. Soil around the fire hydrant shall be compacted in accordance with Section 1003 the Standard Specifications.
- The contractor shall not operate any water main valves on the existing water system.
- FOR ALL COPPER WATER HOUSE CONNECTIONS, UTILIZE FLARED TYPE FITTINGS ONLY.
- ALL WATER HOUSE CONNECTIONS SHALL BE FOR AN INSIDE METER SETTING.

SEWER NOTES

- All sewer mains shall be C.S.P.X., R.C.S.P., V.C.P.X., A.C.P. Class 2400 or P.V.C. unless otherwise noted.
- The contractor shall provide a joint in all sewer mains within 2'-0" of exterior manhole wall.
- All manholes shall be 4'-0" inside diameter, unless otherwise noted.
- MANHOLES SHOWN WITH 12" AND 16" WALLS ARE BRICK MANHOLES ONLY.
- Manholes designated U.T. in plan and profile shall have watertight frame and covers, Standard Detail G5.5.2. Where watertight manhole frame and cover is used, set top of frame 1'-6" above finished grade unless otherwise noted on the drawings.
- House(s) with the symbol "C.N.S." indicates that cellar cannot be served.



WATER & SEWER CODE FOR COUNTY USE,
 WATER NO: E.15
 SEWER NO: 7455000

VICINITY MAP
 SCALE = 1" = 600'

TYPE OF BUILDINGS: SINGLE FAM.
 NUMBER OF LOTS: 35
 NUMBER OF WHC: 35
 NUMBER OF SHC: 35
 DRAINAGE AREA: LITTLE PATUXENT (SAVAGE)

"ROSEMONT"

Cont. No. 24 - 1233 - D

Water & Sewer

Howard County, Md.

Dept. of Public Works.

ITEM	QUANTITIES		MATERIAL SUPPLIER
	EST.	AS BUILT	
8" SAN. SEWER	2507 L.F.	2458	ITT Grinnel Corp.
SAN. SEWER MH	14 EA.	14	BIC Utility Supply Co. 14" Rtc Atlantic Concrete Products Co.
8" WATER MAIN	983 L.F.	983	Amstead Industries, Inc. Griffen Pipe Products Co. Division
6" WATER MAIN	552 L.F.	555	Amstead Industries, Inc. Griffen Pipe Products Co. Division
FIRE HYDRANT	3 EA.	3	Manufacture - US Pipe & Foundry Supplier - Balair Road Co. Inc.
SAN. SEW. HOUSE CONN.	451 L.F.	513	ITT Grinnel Corp.
WATER HOUSE CONN. 3/4"	378 L.F.	478	Manufacture - Howell Metal Supplier - Balair Road Co. Inc.
WATER HOUSE CONN. 1"	333 L.F.	310	Manufacture - Howell Metal Supplier - Balair Road Co. Inc.
8" VALVE	1 EA.	1	Manufacture - US Pipe & Foundry Supplier - Balair Road Co. Inc.
6" VALVE (Exc'l F.H.s)	1 EA.	1	Manufacture - US Pipe & Foundry Supplier - Balair Road Co. Inc.
8" X 6" REDUCER	1 EA.	1	Amstead Industries, Inc. Griffen Pipe Products Co. Division
12" X 8" TS & V.	1 EA.	1	Manufacture - US Pipe & Foundry Supplier - Balair Road Co. Inc.
8" PLUG	1 EA.	1	Amstead Industries, Inc. Griffen Pipe Products Co. Division
6" PLUG	1 EA.	1	Amstead Industries, Inc. Griffen Pipe Products Co. Division
20" STEEL SLEEVE	252 L.F.	244	Valley Steel Products Co.

BENCH MARKS

- Road side bonnet bolt of existing Fire Hydrant (P 17 BM 3) 36' north of Md Rte 283-A. Elevation. 403.42
- Nail in 48" oak tree 160' east of Rosemont Drive. Elevation. 372.18
- Nail in 18" oak tree 250' east of cul-de-sac Rosemont Drive. Elevation. 351.90

Sediment Control measures for this contract will be implemented in accordance with Article 15 of the specifications and also as shown on the grading and Sediment Control Plan F-24-123-D reviewed for Howard County Soil Conservation District and meets technical requirements.

James M. Hahn 8-28-84
 U.S. SOIL CONSERVATION SERVICE DATE

This development is approved for Erosion and Sediment Control by the Howard Soil Conservation District.

Approved: *Robert W. Ziehm* 8-28-84
 HOWARD SOIL CONSERVATION DISTRICT DATE

DEPARTMENT OF PUBLIC WORKS HOWARD COUNTY, MARYLAND Director of Public Works: <i>Mark F. Nemry</i> 8-27-84 Chief, Bureau of Engineering: <i>Robert W. Ziehm</i> 8-27-84 Chief, Bureau of Utilities: <i>Robert W. Ziehm</i> 8-27-84 Chief, Land Development Division: <i>Robert W. Ziehm</i> 8-27-84	DEVELOPMENT CONSULTANTS GROUP, INC. 18409 ROUTE 109 CLARKSVILLE, MD. 21029 301-595-9090	ENGINEER STATE OF MARYLAND PROFESSIONAL ENGINEER No. 12345	DES: _____ DWN: _____ CHK: _____ DATE: _____ BY: _____ NO. _____ REVISION _____ DATE _____	TITLE SHEET WATER & SEWER EXTENSION CONTRACT NO. 24 - 1233 - D 10/1/84 600 SCALE MAP NO. 48-1-27 BLOCK NO. _____	ROSEMONT TAX MAP, 48-1-47 PARCEL, 38 6TH ELECTION DISTRICT HOWARD COUNTY, MARYLAND AS-BUILT January 29, 1985 D.C. No. 111-01	SCALE AS SHOWN SHEET 1 OF 3
---	--	---	--	--	---	--------------------------------

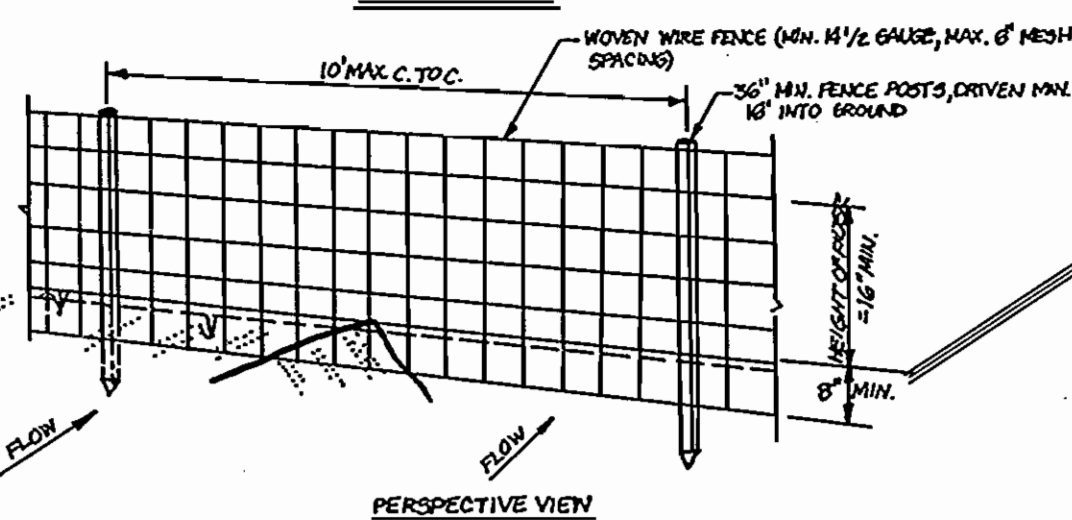
BENCHMARKS

BM #1, Elevation 403.42
 (P41 BM #3) Road side
 bonnet bolt of ex. Fire
 hydrant; 36" N. of
 Md. Rte # 283-A

BM #2, Elevation 372.18
 Nail in 48" Oak tree.

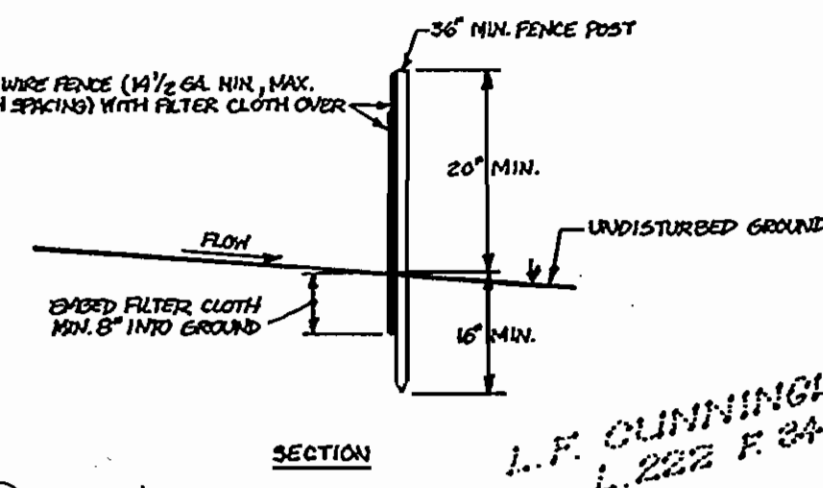
BM #3, Elevation 351.90
 Nail in 18" Oak tree.

SILT FENCE



PERSPECTIVE VIEW

SECTION



Note
 W.L.C. and S.L.C. measurements were measured
 using a 100 FT Lufkin Tape graduated in 1/10ths.

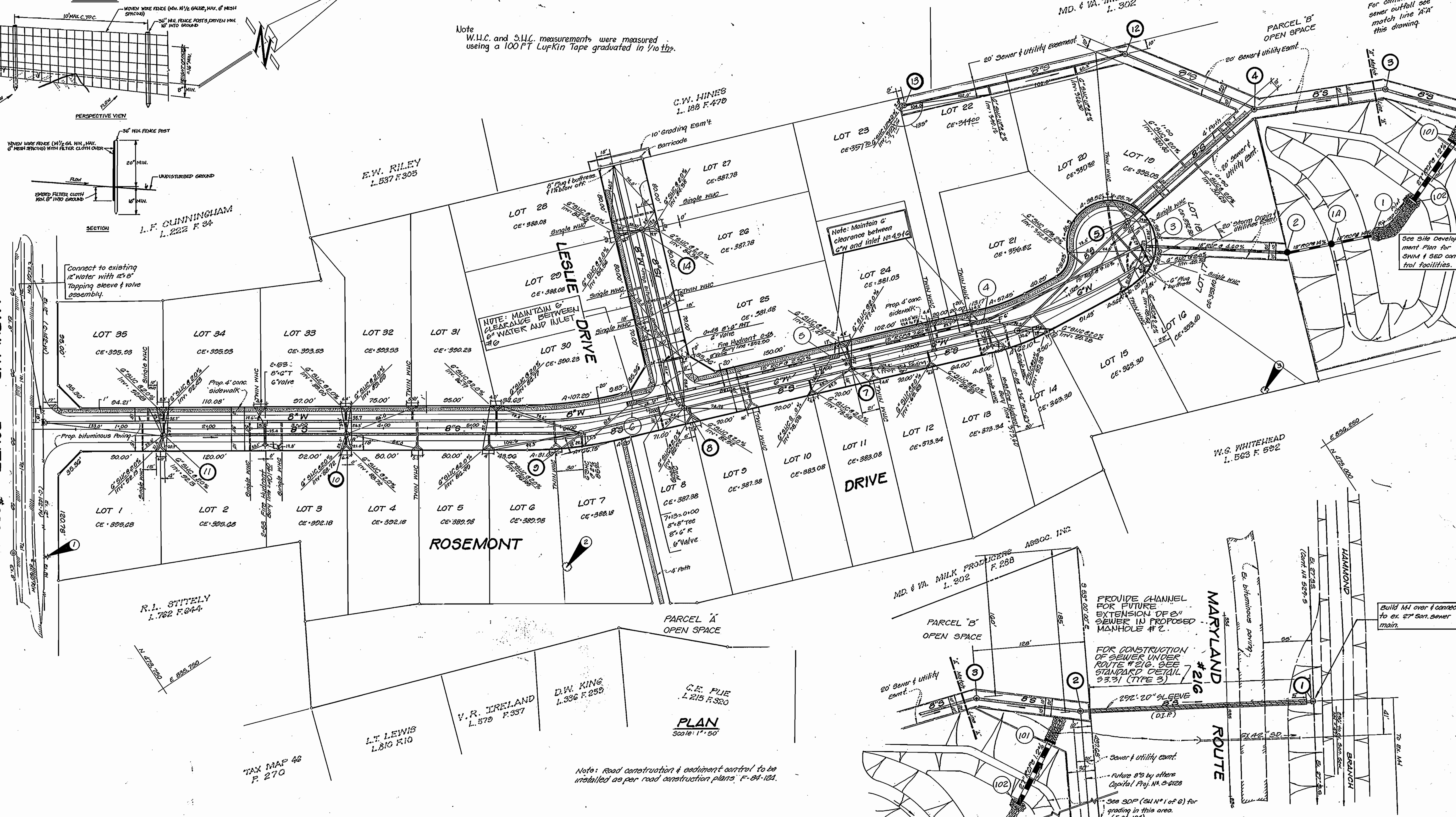
PROVIDE CHANNEL
 FOR FUTURE EXTENSION
 OF 24" SEWER IN
 PROPOSED MANHOLE #12

MD. & VA. MILK PRODUCERS
 L. 302 F. 288 ASSOC. INC.

For continuation of
 sewer outfall see
 match line 'A-A'
 this drawing.

See Site Develop-
 ment Plan for
 SWM & SED control
 facilities.

MARYLAND
 ROUTE # 283-A



ROSEMONT

PLAN
 Scale: 1" = 50'

Note: Road construction & sediment control to be
 installed as per road construction plans F-84-124.

PROVIDE CHANNEL
 FOR FUTURE
 EXTENSION OF 24"
 SEWER IN PROPOSED
 MANHOLE #2.

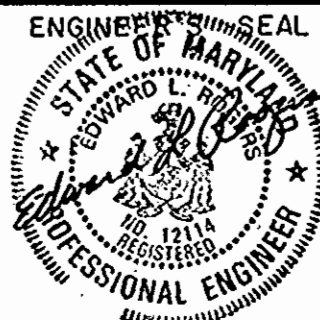
FOR CONSTRUCTION
 OF SEWER UNDER
 ROUTE # 210. SEE
 STANDARD DETAIL
 33.31 (TYPE 3)

Build MI over & connect
 to ex. 27" San. sewer
 main.

DEPARTMENT OF PUBLIC WORKS
 HOWARD COUNTY, MARYLAND

Director of Public Works: *William F. Neuman* 8-27-84
 Chief, Bureau of Engineering: *William F. Neuman* 8-27-84
 Chief, Bureau of Utilities: *Richard W. Beaman* 8-24-84
 Chief, Land Development Division: *William F. Neuman* 8-27-84

DEVELOPMENT CONSULTANTS
 GROUP, INC.
 12408 ROUTE 108
 CLARKSVILLE, MD. 21029
 301-596-9080

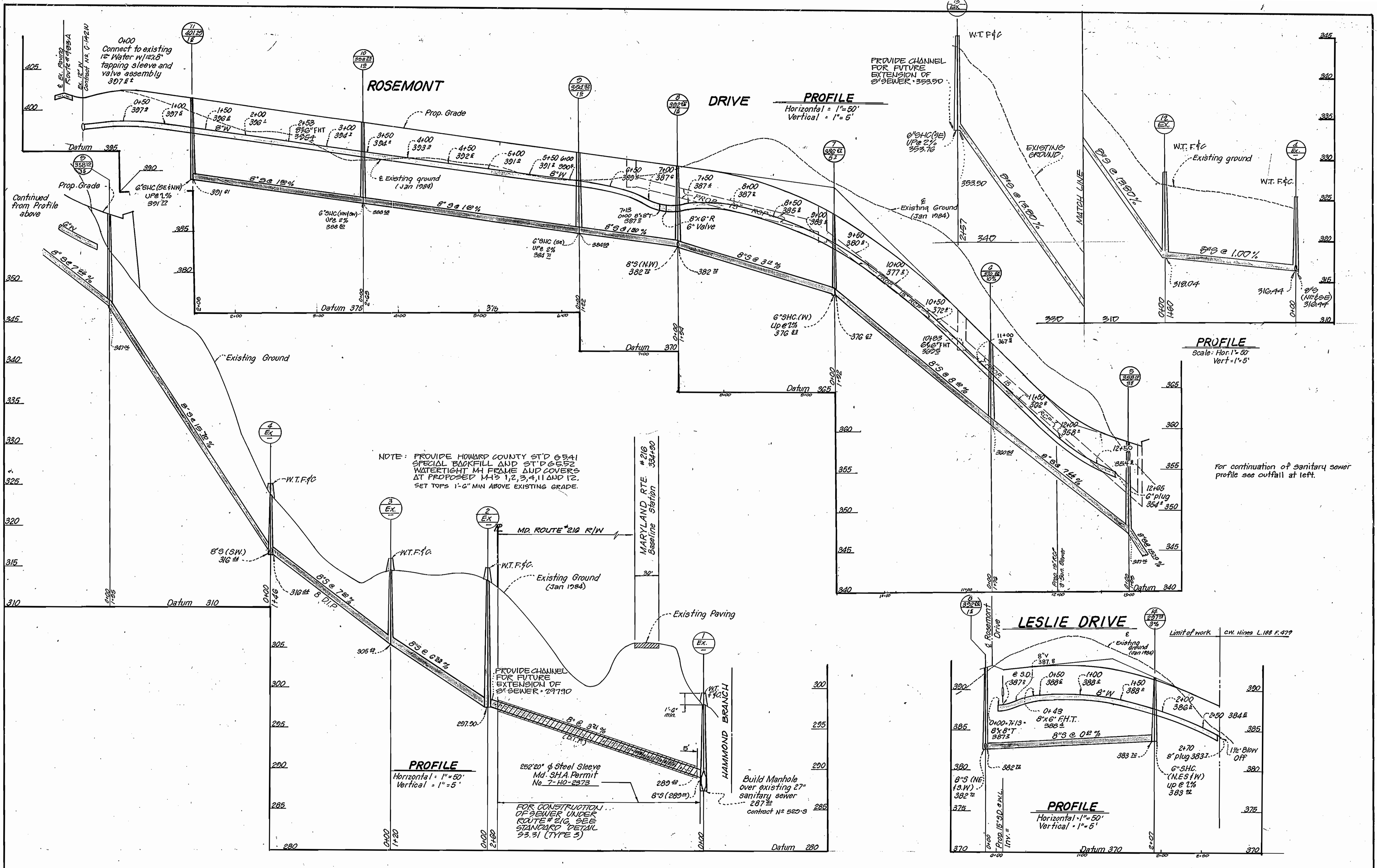


DES:	BILL	BY	NC	REVISION	DATE	600 SCALE MAP NO. 42 & 47	BLOCK NO.
DRN:	MIKE						
CHK:							
DATE:	FEB, 1984						

PLAN
WATER & SEWER MAINS
 CONTRACT NO. 24-1233-D

ROSEMONT
 Tax Map, 46 & 47 Parcel 38
 8th Election District
 Howard County, Maryland.

SCALE
 AS SHOWN
 SHEET
2
 OF
3



NOTE: PROVIDE HOWARD COUNTY STD 6541 SPECIAL BACKFILL AND STD 6552 WATERTIGHT M-FRAME AND COVERS AT PROPOSED M-H'S 1, 2, 3, 4, 11 AND 12. SET TOPS 1'-0" MIN ABOVE EXISTING GRADE.

PROFILE
Horizontal = 1" = 50'
Vertical = 1" = 5'

PROFILE
Horizontal = 1" = 50'
Vertical = 1" = 5'

PROFILE
Scale: Hor 1" = 50'
Vert 1" = 5'

For continuation of sanitary sewer profile see outfall at left.


DEPARTMENT OF PUBLIC WORKS
HOWARD COUNTY, MARYLAND

Steve F. Nemmer 8-27-84
DIRECTOR OF PUBLIC WORKS DATE

William S. Papp 8/27/84
CHIEF, BUREAU OF ENGINEERING DATE

Robert M. Beemer 8-24-84
CHIEF, BUREAU OF UTILITIES DATE

William S. Papp 8/27/84
CHIEF, LAND DEVELOPMENT DIVISION DATE

 DEVELOPMENT CONSULTANTS GROUP, INC.

12408 ROUTE 108
CLARKSVILLE, MD. 21029
301-596-9080



DES:					
DRN:					
CHK:					
DATE:	T&L	1	Dept. of Public Works Comments 9-29-84	9/1/84	
BY NO.			REVISION		

PROFILES
WATER AND SEWER MAIN

CONTRACT NO. 24-1233-D

DATE: 600 SCALE MAP NO. 42147 BLOCK NO.

ROSEMONT

TAX MAPS 46147, PARCEL 38,
6TH ELECTION DISTRICT
HOWARD COUNTY, MARYLAND

SCALE AS SHOWN
SHEET 3 OF 3