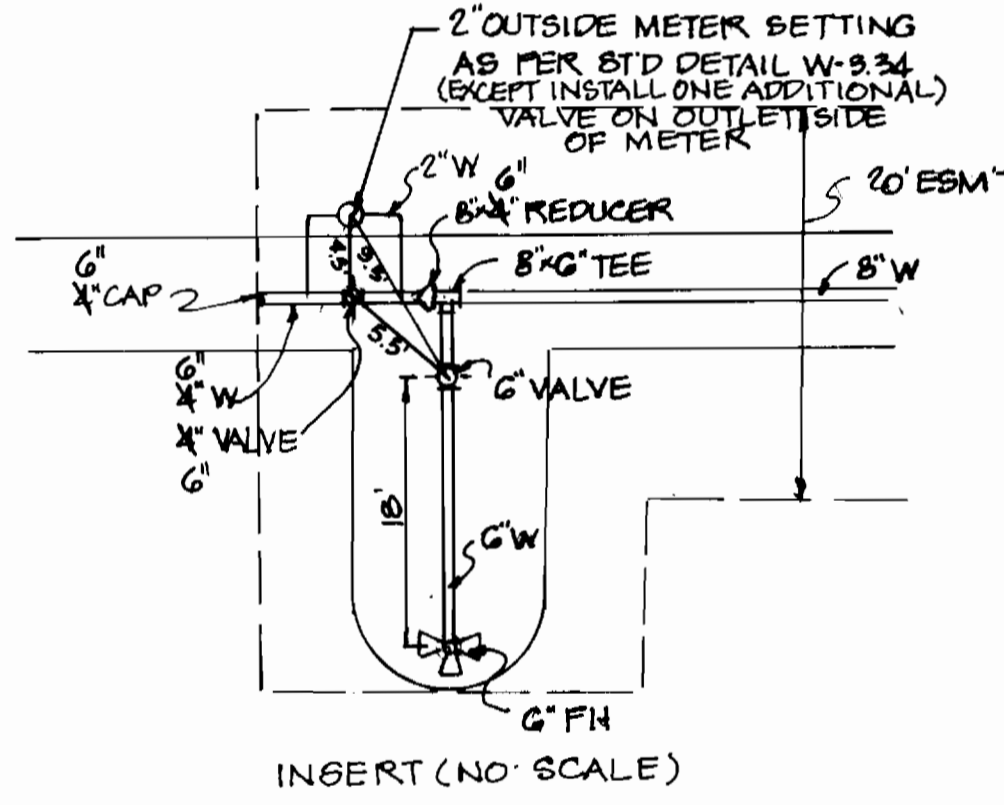


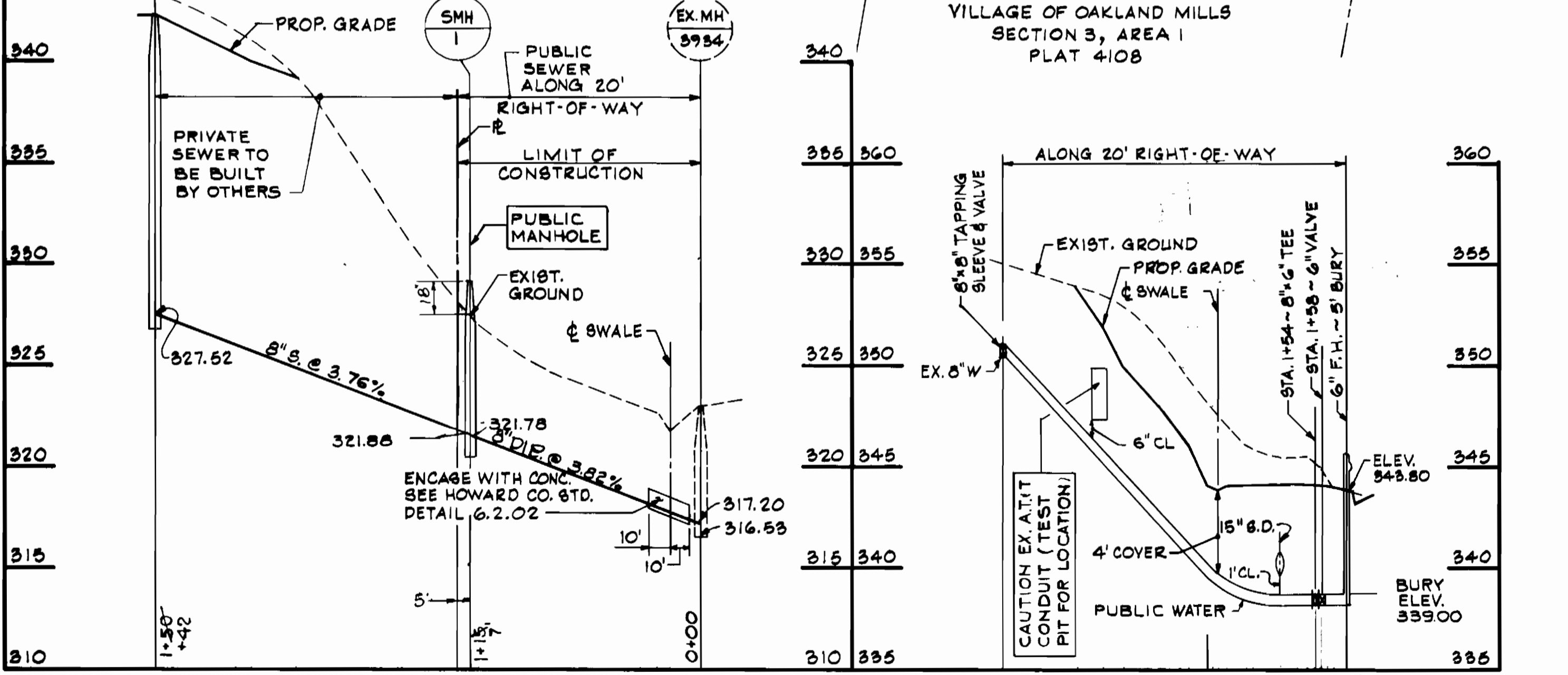
VICINITY MAP
SCALE: 1" = 600'

- GENERAL NOTES**
- APPROX. LOCATIONS OF EXISTING UTILITIES ARE SHOWN. THE CONTRACTOR SHALL TAKE ALL NECESSARY PRECAUTIONS TO PROTECT EXISTING UTILITIES AND SERVICES AND TO MAINTAIN UNINTERRUPTED SERVICE. ANY DAMAGE INCURRED DUE TO THE CONTRACTOR'S OPERATION SHALL BE REPAIRED IMMEDIATELY AT THE CONTRACTOR'S EXPENSE.
 - ALL PIPE ELEVATIONS ARE INVERT ELEVATIONS.
 - CONTRACTOR SHALL NOTIFY "MISS UTILITY" (559-0100) AT LEAST 3 DAYS PRIOR TO BEGINNING ANY CONSTRUCTION SHOWN HEREON.
 - FOR ALL STANDARD DETAILS SEE STANDARDS BOUND IN SPECIFICATIONS.
 - CLEAR ALL UTILITIES BY A MINIMUM OF 6' CLEAR ALL POLES BY A MINIMUM OF 2'-0" OR TUNNEL AS REQUIRED. ANY COSTS INCURRED BY THE CONTRACTOR FOR TUNNELING OR BRACING POLES SHALL BE INCLUDED IN THE UNIT PRICE BID FOR EXCAVATION.
 - THE CONTRACTOR SHALL PROVIDE A JOINT IN ALL SEWER MAINS WITHIN 2'-0" OF EXTERIOR MANHOLE WALLS.
 - ALL WATER LINES TO HAVE A MINIMUM OF 3'-6" COVER, UNLESS OTHERWISE NOTED.
 - BLOCK ALL FITTINGS WITH CONCRETE; STANDARDS BOUND IN SPECIFICATIONS.
 - BURY LINE ELEVATIONS ON FIRE HYDRANTS SHALL BE SET TO THE ELEVATIONS SHOWN ON THE DRAWINGS. SOIL AROUND HYDRANTS TO BE COMPACTED IN ACCORDANCE WITH SECTION 5.15 OF THE STANDARD SPECIFICATIONS.
 - ALL FIRE HYDRANTS SHALL BE STRAPPED TO THE TEE AND SHALL BE BUTTRESSED WITH CONCRETE IN ACCORDANCE WITH THE STANDARD DETAILS.
 - ALL HORIZONTAL AND VERTICAL CONTROLS ARE BASED ON MD. STATE DATUM.
 - ALL WATER MAINS SHALL BE C.I.P., D.I.P. OR A.C.P.X. UNLESS OTHERWISE NOTED.
 - CONTRACTOR SHALL NOTIFY BALTIMORE GAS AND ELECTRIC CO. 72 HOURS PRIOR TO ANY CONSTRUCTION IN THE VICINITY OF ANY GAS AND ELECTRIC FACILITIES BY CALLING 589-6000 EXT. 69.
 - TREES ARE TO BE PROTECTED FROM DAMAGE TO THE MAXIMUM EXTENT. ALL TREES LOCATED WITHIN THE CONSTRUCTION AREA ARE NOT TO BE REMOVED OR DAMAGED BY THE CONTRACTOR.
 - ALL VALVES SHALL BE STRAPPED TO TEES IN ACCORDANCE WITH STANDARD DETAILS.
 - ALL SEWER MAINS SHALL BE C.B.P.X., V.C.P.X. OR A.C.P. CLASS 2400, UNLESS OTHERWISE NOTED.
 - CONTRACTOR SHALL REMOVE TREES, STUMPS AND ROOTS ALONG LINE OF EXCAVATION AS DIRECTED BY THE ENGINEER. PAYMENT FOR SUCH REMOVAL SHALL BE INCLUDED IN THE UNIT PRICE BID FOR EXCAVATION AND BACKFILL FOR WATER AND SEWER MAINS.
 - PLACE REGULATION "MEN WORKING" AND WARNING SIGNS AS REQUIRED TO COMPLY WITH MARYLAND STATE HIGHWAY ADMINISTRATION MANUAL OF TRAFFIC CONTROL FOR HIGHWAY CONSTRUCTION AND MAINTENANCE OPERATIONS.
 - THE CONTRACTOR SHALL NOTIFY AMERICAN TELEPHONE AND TELEGRAPH PRIOR TO ANY CONSTRUCTION IN THE VICINITY OF ANY A.T.&T. FACILITIES BY CALLING 922-6550. THE CONTRACTOR SHALL NOTIFY COLONIAL PIPELINE CO. PRIOR TO ANY CONSTRUCTION IN THE VICINITY OF THE EXISTING 26" PIPELINE BY CALLING 282-0166.
 - THE CONTRACTOR SHALL NOTIFY THE C.B.P. TELEPHONE CO. PRIOR TO ANY CONSTRUCTION IN THE VICINITY OF ANY TELEPHONE CO. FACILITIES BY CALLING COLLECT 686-0400 IN BALTIMORE.
 - SEDIMENT CONTROL SHALL BE IN ACCORDANCE WITH ARTICLE 15 OF THE HOWARD CO DESIGN MANUAL VOL II STANDARD SPECIFICATIONS AND SITE PLAN SDP 84-185-C
 - FOR ALL COPPER HOUSE CONNECTION, UTILIZE FLARED TYPE FITTINGS ONLY



INSERT (NO SCALE)

PLAN
SCALE: 1" = 50'



SANITARY SEWER PROFILE
SCALE: 1" = 50' HORIZ. 8" = 3' VERT.

WATER MAIN PROFILE
SCALE: 1" = 50' HORIZ. 8" = 3' VERT.

Reviewed for Howard
and meets Technical Requirements
Signature: J. Helms Date: 5-4-84
U.S. Soil Conservation Service

THIS DEVELOPMENT PLAN IS APPROVED
FOR SOIL EROSION AND SEDIMENT
CONTROL BY THE HOWARD SOIL
CONSERVATION DISTRICT.
Approved: Robert J. Zick Date: 5-4-84
Howard, G.C.D.

QUANTITIES		
ITEM	PROPOSED	AS BUILT
8" SEWER	120 L.F.	120 L.F. C-54
8" WATER	180 L.F.	180 L.F. C-54
6" WATER	20 L.F.	20 L.F. C-54
FIRE HYDRANTS	1 EA.	1 METROPOLITAN
MANHOLE	6.5 V.F.	1 U.S. PIPE
6" x 8" TAPPING SLEEVE & VALVE	1 EA.	0.5 PIPE & FITTING
6" VALVE	1 EA.	2-METROPOLITAN
6" VALVE	1 EA.	NONE
6" CAP	1 EA.	1-U.S. PIPE

ITEM	QUANTITIES	AS-BUILT
2" WATER METERS	1	1-FORD
SEWER HOUSE CONN.	18	

Water Code: E-03
Sewer Code: 5611-200

DEPARTMENT OF PUBLIC WORKS
HOWARD COUNTY, MARYLAND

Director of Public Works: *Robert J. Zick* Date: 5-8-84
Chief Bureau of Utilities: *Robert J. Zick* Date: 5-7-84

Chief, Bureau of Engineering: *Robert J. Zick* Date: 5-7-84
Chief, Land Development Division: *Robert J. Zick* Date: 5-7-84

HITNEY
AILEY
OX
MAGNANI

CONSULTING ENGINEERS
Suite 311 Green Spring Station
2360 West Joppa Road
Lutherville, Maryland 21093
301-296-4200



DES: P.D.	
DRN: R.G.	
CHK: P.E.C.	
DATE:	
BY NO	
REVISION	
DATE	

PLAN OF WATER & SEWER MAIN
CONTRACT NO. 24-1228-D
600' SCALE MAP NO. 30 BLOCK NO. 21

WATER AND SEWER MAIN EXTENSIONS
TWIN KNOLLS ROAD
VILLAGE OF OAKLAND MILLS
SECTION 3 AREA 1

ELECTION DISTRICT NO. 6 HOWARD CO., MD.

SCALE AS SHOWN
SHEET 1 OF 1

AS BUILT 12/84