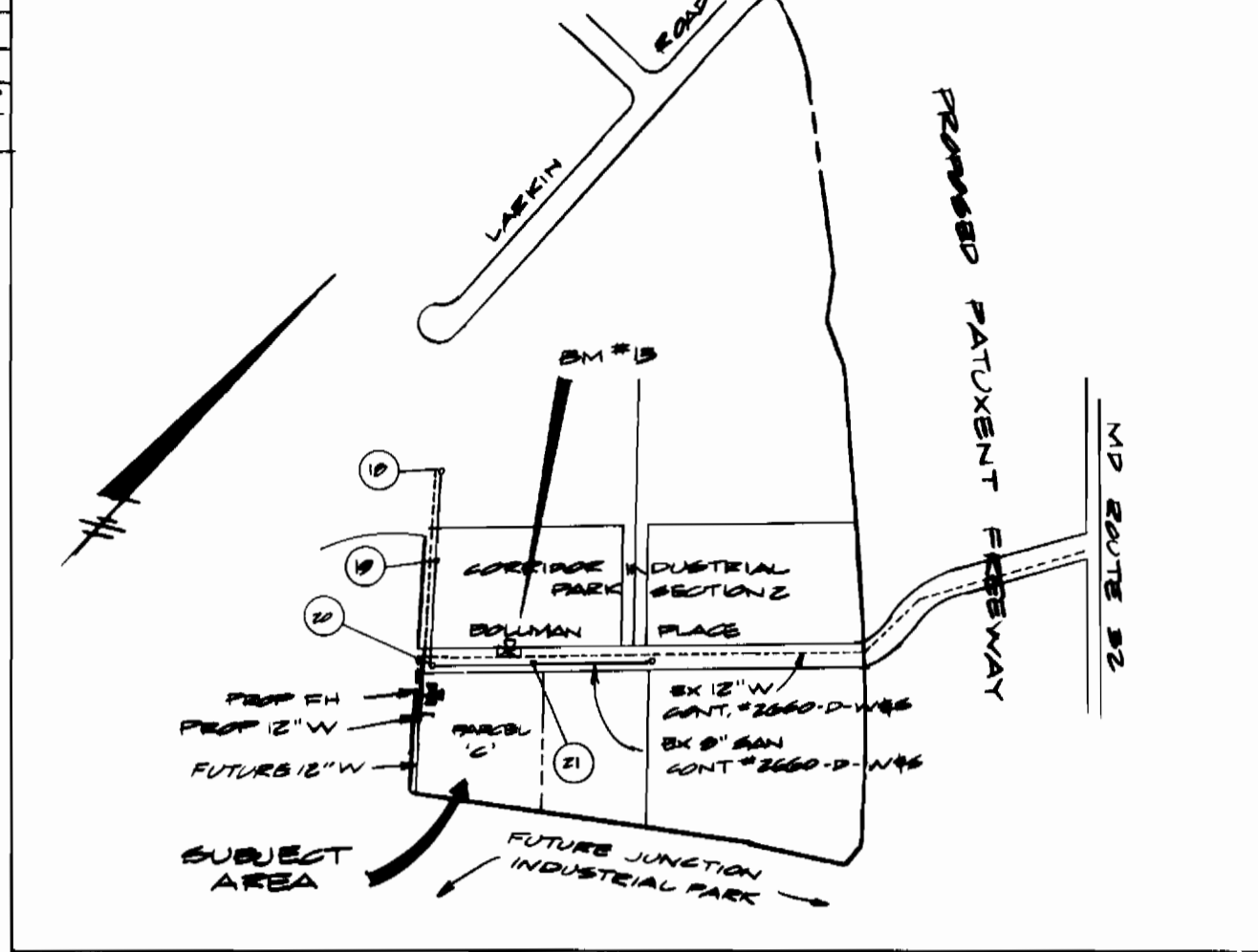


QUANTITIES			
ITEM	ESTIMATE	AS BUILT	MATERIAL/SUPP
12" WATER	100 LF	190	ATLANTIC STATES/A/P
6" WATER	24 LF	24	ATLANTIC STATES/A/P
6" FH & VALVE	1 EA.	10	ATLANTIC STATES/A/P
12" VALVE	2 EA.	2	MUELLER CO./A/P
6" VALVE	1 EA.	1	MUELLER CO./A/P
12" GAP	1 EA.	1	ATLANTIC STATES/A/P

TYPE OF BUILDING ~ OFFICE / WAREHOUSE  
 NUMBER OF LOTS ~ 1  
 NUMBER OF WATER H.C. ~ 1  
 NUMBER OF SEWER H.C. ~ 1 (EXISTING)  
 DRAINAGE AREA ~ LITTLE PATUENT

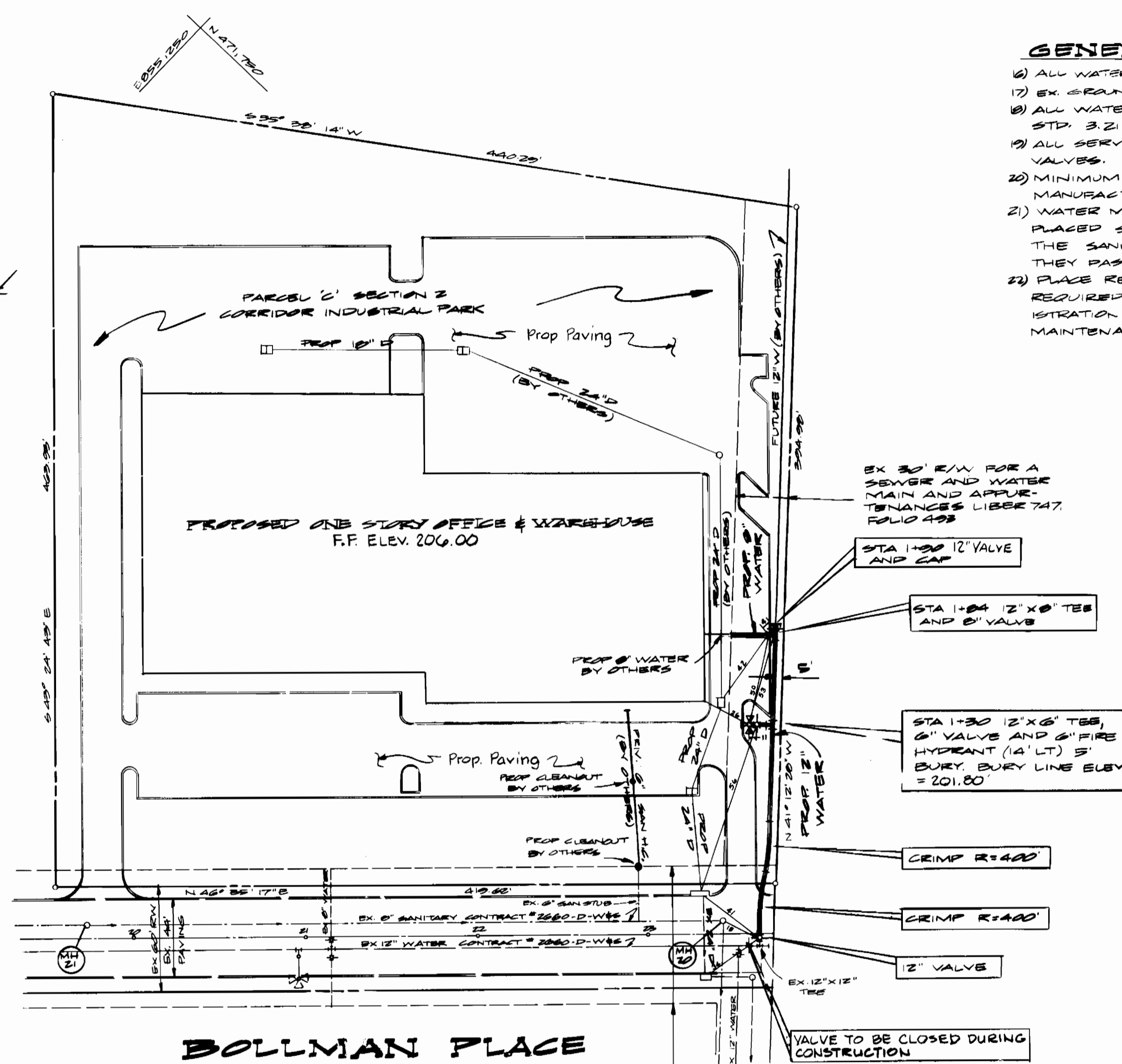


**VICINITY MAP**

SCALE: 1"=600'  
 WATER CODE ~ E-14  
 SEWER CODE ~ 4100000  
 BENCH MARK #13 ~ X-CUT IN EAST FLANGE BOLT OF FIRE HYDRANT STA 20+50 ± 25 RT E BOLLMAN PLACE. ELEV. = 199.77

**GENERAL NOTES CONT.**

- ALL WATER HOUSE CONNECTIONS SHALL BE FOR AN INSIDE METER.
- EX. FOUND OVER WATER LINE TAKEN FROM RECENT SURVEY.
- ALL WATER HOUSE CONNECTIONS SHALL COMPLY WITH HO. CO. STD. 3.21 AS SHOWN ON ARTICLE 40, SPECIAL PROVISIONS.
- ALL SERVICE CONNECTIONS SHALL HAVE PRESSURE REDUCING VALVES.
- MINIMUM CRIMP RADIUS WILL BE AS SPECIFIED BY PIPE MANUFACTURER.
- WATER MAINS AND WATER MAIN CONNECTIONS MUST BE PLACED SO AS TO HAVE AT LEAST 1.0 SEPARATION FROM THE SANITARY SEWER AND SEWER HOUSE CONNECTION IF THEY PASS ABOVE IT.
- PLACE REGULATION "MEN WORKING" AND WARNING SIGNS AS REQUIRED TO COMPLY WITH THE MD STATE HIGHWAY ADMINISTRATION'S - MANUAL FOR HIGHWAY CONSTRUCTION AND MAINTENANCE OPERATIONS.

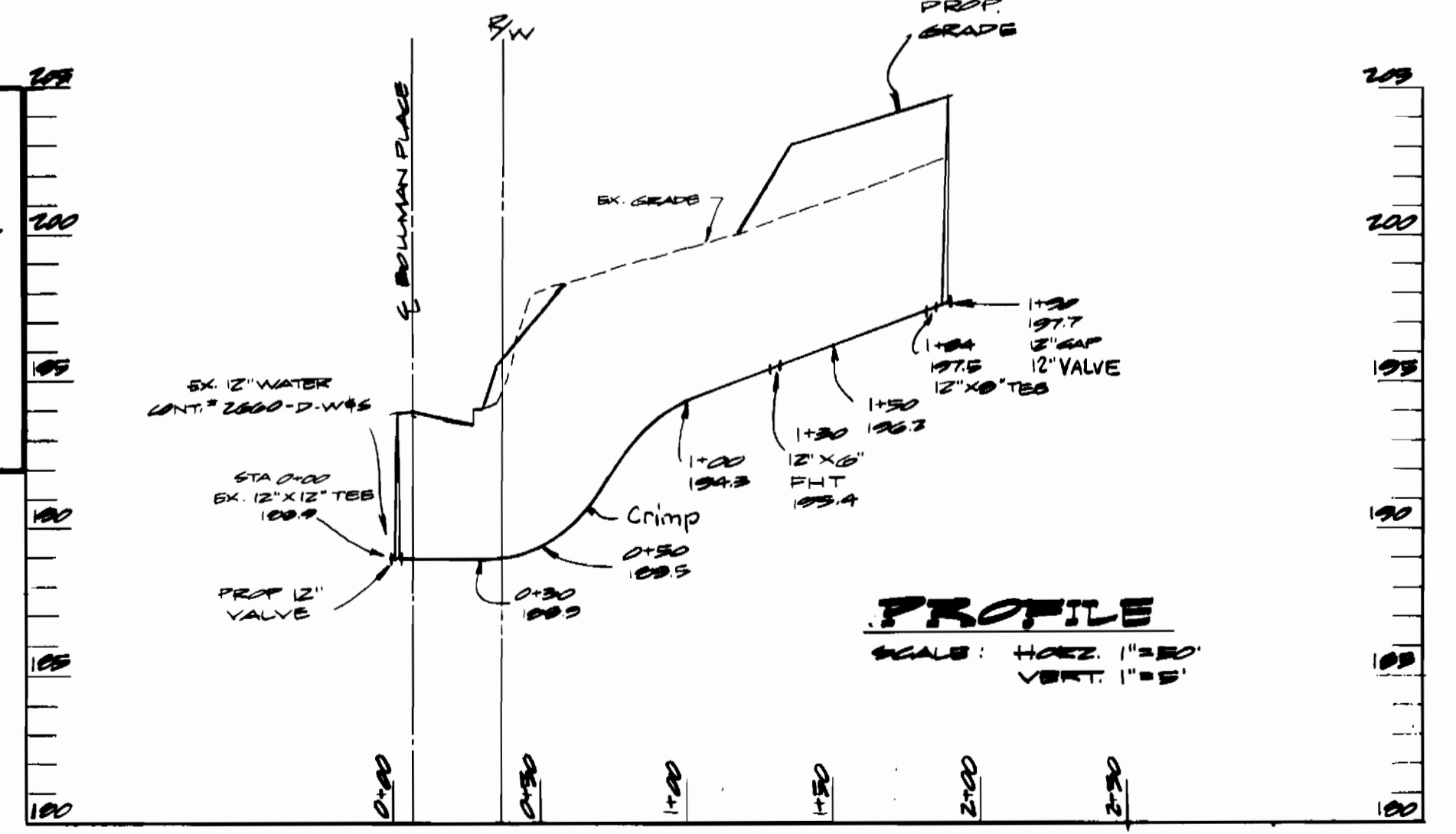


CONTRACTOR SHALL NOTIFY THE FOLLOWING UTILITIES OR AGENCIES AT LEAST FIVE (5) DAYS BEFORE STARTING WORK.

- MISS UTILITY (COLLECT) 1-550-0100
- BALTO GAS AND ELECTRIC COMPANY - UNDERGROUND GAS DISTRIBUTION CUSTOMER SERVICE 605-0123
- BALTO GAS AND ELECTRIC COMPANY - UNDERGROUND ELECTRIC DISTRIBUTION CUSTOMER SERVICE 605-0123
- ENGINEERING DAMAGE CONTROL 234-5621
- C&P TELEPHONE COMPANY 725-9976
- AT&T CABLE LOCATION DIVISION 303-3553
- BUREAU OF UTILITIES HOWARD COUNTY 992-2366

**GENERAL NOTES:**

- APPROXIMATE LOCATION OF EX. MAINS ARE SHOWN. THE CONTRACTOR SHALL TAKE ALL NECESSARY PRECAUTIONS TO PROTECT EX. MAINS AND SERVICES AND MAINTAIN UNINTERRUPTED SUPPLY. ANY DAMAGED INCURRED SHALL BE REPAIRED IMMEDIATELY TO THE SATISFACTION OF THE ENGINEER, AT THE CONTRACTOR'S EXPENSE.
- ALL HORIZONTAL CONTROLS ARE BASED ON MARYLAND STATE COORDINATES.
- ALL VERTICAL CONTROLS ARE BASED ON MARYLAND STATE DATUM.
- ALL PIPE ELEVATIONS SHOWN ARE INVERT ELEVATIONS.
- CLEAR ALL UTILITIES BY A MINIMUM 2' CLEARANCE. CLEAR ALL TRENCHES BY A MINIMUM 2' CLEARANCE. CLEAR ALL TRENCHES BY A MINIMUM 2' CLEARANCE. CLEAR ALL TRENCHES BY A MINIMUM 2' CLEARANCE.
- FOR DETAILS NOT SHOWN ON THIS DRAWING USE HOWARD CO. STD. DETAILS.
- FOR MATERIALS AND CONSTRUCTION METHODS USE HOWARD CO. STD. SPECIFICATIONS.
- CONTRACTOR SHALL LOCATE EXISTING UTILITIES A MINIMUM OF TWO (2) WEEKS IN ADVANCE OF CONSTRUCTION OPERATIONS IN THE VICINITY OF PROPOSED UTILITIES AT HIS OWN EXPENSE.
- TREES ARE TO BE PROTECTED FROM DAMAGE TO MAXIMUM EXTENT. TREES LOCATED WITHIN THE CONSTRUCTION STRIP ARE NOT TO BE REMOVED OR DAMAGED AS DIRECTED BY THE ENGINEER. PAYMENT FOR SUCH REMOVAL SHALL BE INCLUDED IN THE UNIT PRICE BID FOR CONSTRUCTION OF THE MAIN.
- CONTRACTOR SHALL REMOVE TREES, STUMPS AND ROOTS ALONG LINE OF EXCAVATION AS DIRECTED BY THE ENGINEER. PAYMENT FOR SUCH REMOVAL SHALL BE INCLUDED IN THE UNIT PRICE BID FOR CONSTRUCTION OF THE MAIN.
- ALL WATER MAINS SHALL BE DIP UNLESS OTHERWISE NOTED.
- TOP OF ALL WATER MAINS SHALL HAVE 3' COVER UNLESS OTHERWISE NOTED.
- ALL VALVES ADJACENT TO TEES SHALL BE STRAPPED TO TEES.
- BLOCK ALL FITTINGS WITH CONCRETE.
- BURY LINE ELEVATIONS ON FIRE HYDRANTS SHALL BE SET TO THE ELEVATIONS SHOWN ON THE DRAWINGS. ALL FIRE HYDRANTS SHALL BE STRAPPED AND BUTTRESSED WITH CONCRETE IN ACCORDANCE WITH STANDARD DETAILS. 30' AROUND FIRE HYDRANT TO BE COMPACTED IN ACCORDANCE WITH SECTIONS 37.01 AND 37.05 OF THE STANDARD SPECIFICATIONS.



SEDIMENT CONTROL MEASURES FOR THIS CONTRACT WILL BE IMPLEMENTED IN ACCORDANCE WITH ARTICLE 18 OF THE STANDARD SPECIFICATIONS AND IN ACCORDANCE WITH SDP 04-153

REVIEWED FOR HOWARD SOIL CONSERVATION DISTRICT AND MEETS TECHNICAL REQUIREMENTS:  
 M.H.K. Sall 3-27-04  
 SIGNATURE DATE  
 U.S. SOIL CONSERVATION DISTRICT

THIS DEVELOPMENT PLAN IS APPROVED FOR SOIL EROSION AND SEDIMENT CONTROL BY THE HOWARD SOIL CONSERVATION DISTRICT  
 APPROVED: Robert Zelen 3-27-04  
 HOWARD S.P.D. DATE

DEPARTMENT OF PUBLIC WORKS  
 HOWARD COUNTY, MD  
 M. F. Nimmig 3-28-04  
 DIRECTOR OF PUBLIC WORKS - DATE  
 Robert M. Beinger 3-21-04  
 CHIEF - BUREAU OF UTILITIES - DATE

GEORGE WILLIAM STEPHENS  
 JR. & ASSOCIATES INC.  
 ENGINEERS  
 808 ALLEGHENY AVE.  
 TOWSON, MARYLAND  
 21284  
 501-925-0120

DES: JEM	DATE:
CHK: TC	BY NO.:
	REVISION:
	DATE:

**PLAN AND PROFILE**

CORRIDOR INDUSTRIAL PARK  
 SECTION 2  
 PARCEL 'C'  
 ELECTION DISTRICT NO. 6  
 CONTRACT NO. 44-120-D

SCALE: AS SHOWN  
 SHEET 1 OF 1