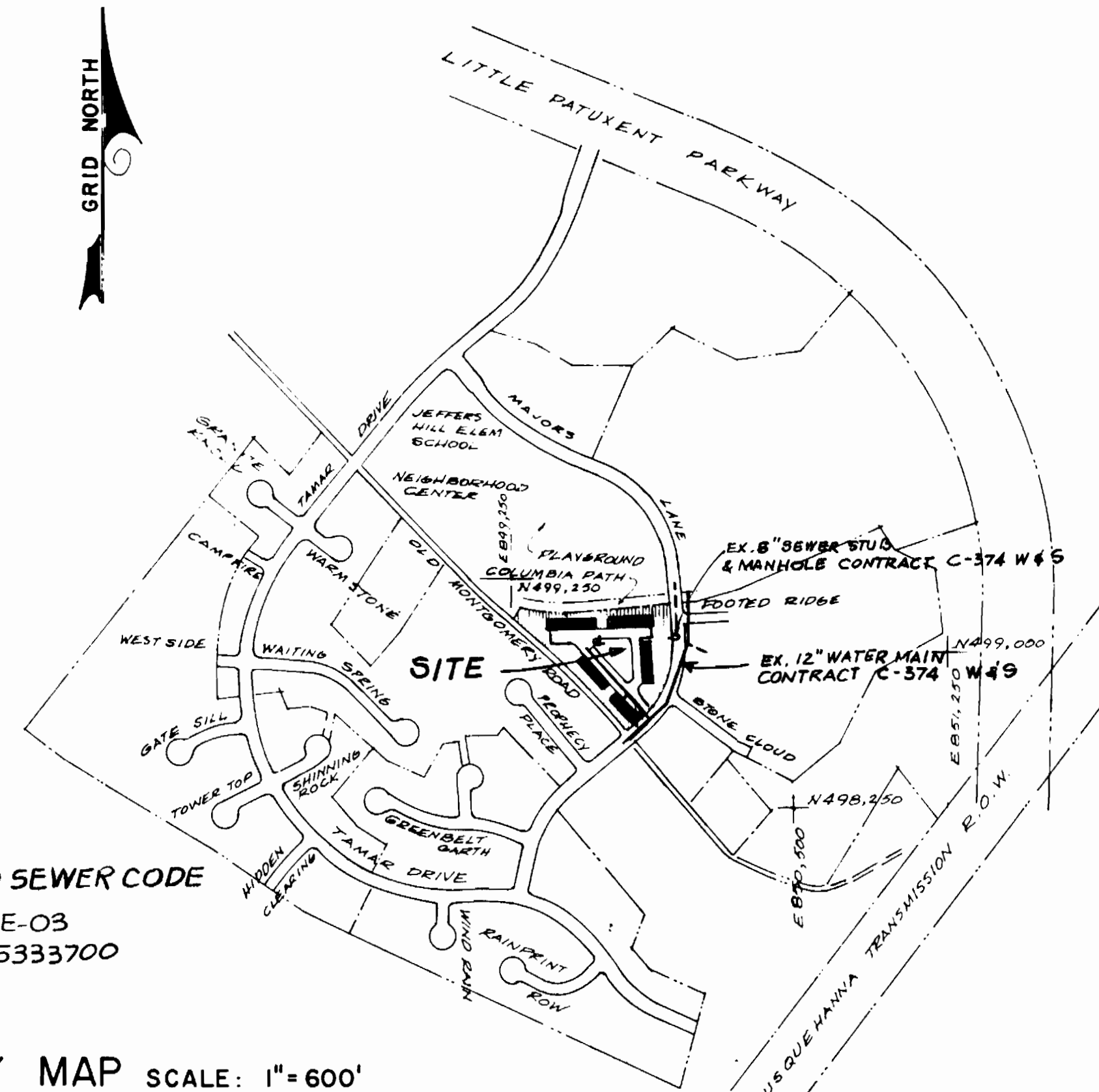


GENERAL NOTES

- APPROXIMATE LOCATION OF EXISTING MAINS ARE SHOWN. THE CONTRACTOR SHALL TAKE ALL NECESSARY PRECAUTIONS TO PROTECT EXISTING MAINS AND SERVICES AND MAINTAIN UNINTERRUPTED SUPPLY. ANY DAMAGE INCURRED SHALL BE REPAIRED IMMEDIATELY TO THE SATISFACTION OF THE ENGINEER AT THE CONTRACTOR'S EXPENSE.
- ALL HORIZONTAL CONTROLS ARE BASED ON MARYLAND STATE COORDINATES.
- ALL VERTICAL CONTROLS ARE BASED ON U.S.G.S. DATUM.
- ALL PIPE ELEVATIONS SHOWN ARE INVERT ELEVATIONS.
- CLEAR ALL UTILITIES BY A MINIMUM OF 6". CLEAR ALL POLES BY 2'-0" MINIMUM OR TUNNEL AS REQUIRED. ANY COST INCURRED TO THE CONTRACTOR FOR TUNNELING OR BRACING AT POLES SHALL BE INCLUDED IN UNIT PRICES BID FOR CONSTRUCTION OF THE MAIN.
- FOR DETAILS NOT SHOWN ON THE DRAWINGS USE HOWARD COUNTY STANDARD DETAILS.
- FOR MATERIAL AND CONSTRUCTION METHODS USE HOWARD COUNTY STANDARD SPECIFICATIONS.
- CONTRACTOR SHALL LOCATE EXISTING UTILITIES A MINIMUM OF TWO (2) WEEKS IN ADVANCE OF CONSTRUCTION OPERATIONS IN THE VICINITY OF PROPOSED UTILITIES AT HIS OWN EXPENSE.
- CONTRACTOR SHALL NOTIFY THE FOLLOWING UTILITIES OR AGENCIES AT LEAST FIVE (5) WORKING DAYS BEFORE STARTING WORK SHOWN ON THESE PLANS:
  - STATE HIGHWAY ADMINISTRATION: 531-5533
  - BALTIMORE GAS & ELECTRIC COMPANY - UNDERGROUND GAS DISTRIBUTION CUSTOMER SERVICE: 685-0123
  - BALTIMORE GAS & ELECTRIC COMPANY - UNDERGROUND ELECTRIC DISTRIBUTION CUSTOMER SERVICE: 685-0123
  - ENGINEERING "DAMAGE CONTROL": 234-5621
  - "MISS UTILITY": 1-559-0100
  - CHESAPEAKE & POTOMAC TELEPHONE COMPANY: 725-9976
  - BUREAU OF UTILITIES - HOWARD COUNTY: 992-2366
- TREES ARE TO BE PROTECTED FROM DAMAGE TO MAXIMUM EXTENT. TREES LOCATED WITHIN THE CONSTRUCTION STRIP ARE NOT TO BE REMOVED OR DAMAGED BY THE CONTRACTOR.
- CONTRACTOR SHALL REMOVE TREES, STUMPS AND ROOTS ALONG LINE OF EXCAVATION AS DIRECTED BY THE ENGINEER. PAYMENT FOR SUCH REMOVAL SHALL BE INCLUDED IN THE UNIT PRICE BID FOR CONSTRUCTION OF THE MAIN.
- PLACE REGULATION "MEN WORKING" AND WARNING SIGNS AS REQUIRED TO COMPLY WITH MARYLAND STATE HIGHWAY ADMINISTRATION MANUAL OF TRAFFIC CONTROL FOR HIGHWAY CONSTRUCTION AND MAINTENANCE OPERATIONS.
- ALL WATER MAINS TO BE C.I.P. OR D.I.P. UNLESS OTHERWISE NOTED.
- TOP OF WATER MAINS TO HAVE A MINIMUM OF 3'-6" COVER UNLESS OTHERWISE NOTED.
- VALVES ADJACENT TO TEES SHALL BE STRAPPED TO TEES.
- BLOCK ALL FITTINGS WITH CONCRETE.
- BURY LINE ELEVATIONS ON FIRE HYDRANTS SHALL BE SET TO THE ELEVATIONS SHOWN ON THE DRAWINGS. ALL FIRE HYDRANTS SHALL BE STRAPPED AND BUTTRESSED WITH CONCRETE IN ACCORDANCE WITH STANDARD DETAILS. SOIL AROUND THE FIRE HYDRANT TO BE COMPACTED IN ACCORDANCE WITH SECTIONS 5701 AND 5705 OF THE STANDARD SPECIFICATIONS. 1003 1008
- THE CONTRACTOR SHALL NOT OPERATE ANY WATER MAIN VALVES ON THE EXISTING SYSTEM.
- WATER MAINS AND WATER HOUSE CONNECTION LINES MUST BE PLACED SO AS TO HAVE AT LEAST ONE (1) FOOT SEPARATION FROM THE SEWER MAIN OR SEWER HOUSE CONNECTION AS THEY PASS ABOVE IT.
- MANHOLES LOCATED WITHIN PROPOSED ROADWAY SHALL HAVE STANDARD HEAVY TRAFFIC MANHOLE FRAME AND COVER, STANDARD DETAIL G5.51
- MANHOLES DESIGNATED W.T. IN PLAN AND PROFILE SHALL HAVE WATERTIGHT FRAME AND COVERS, STANDARD DETAIL G5.52. WHERE WATERTIGHT MANHOLE FRAME AND COVER IS USED, SET TOP OF FRAME 1'-6" ABOVE FINISHED GRADE.
- ALL WATER HOUSE CONNECTIONS SHALL BE FOR INSIDE METEER SETTINGS (BLDG 2 AND 3). BUILDINGS 1, 4 AND 5 SHALL BE SERVED BY ONE (1) MASTER METER.
- FOR ALL COPPER WATER HOUSE CONNECTIONS UTILIZE FLARED TYPE FITTINGS ONLY.
- NO SITE WORK COVERED BY THIS PLAN SHALL COMMENCE UNTIL SDP-83-132 IS APPROVED AND SEDIMENT CONTROLS SPECIFIED THEREIN HAVE BEEN INSTALLED.

QUANTITIES			
ITEM	EST'D	AS BUILT	SUPPLY
12" WATER	425 L.F.		
6" WATER	50 L.F.		
3/4" W.H.C.	15		
FIRE HYDRANTS	2		
12"x12" TAP	1		
SLEEVE 6"x12" VALVE	3		
12"x6" TEE	1		
12" PLUG	1		
6" VALVES (EXCL. FH)	1		
6" METER VAULT	1		
SEWER MANHOLE	1		
8" SEWER	4 L.F.		

\* AND ACCESSORIES AS PER SPECIAL PROVISIONS ARTICLE 40.00, ITEM 40.12.



WATER AND SEWER CODE  
 WATER № E-03  
 SEWER № 5333700

VICINITY MAP SCALE: 1"=600'

45 TOWN HOUSE CONDOMINIUMS

- 45 BUILDINGS (UNITS)
- 15 WHC (FOR BUILDINGS 2 AND 3)
- 1 SHC
- 1 MASTER METER (FOR BUILDINGS 1, 4 & 5)

DRAINAGE AREA: LITTLE PATUXENT

# HIGH MEADOW

VILLAGE OF LONGREACH, COLUMBIA, MARYLAND  
 SECTION ONE, AREA TWO, PARCEL "D"

## CONTRACT NO. 24-1198-D WATER MAIN EXTENSION

### HOWARD COUNTY, MARYLAND DEPARTMENT OF PUBLIC WORKS

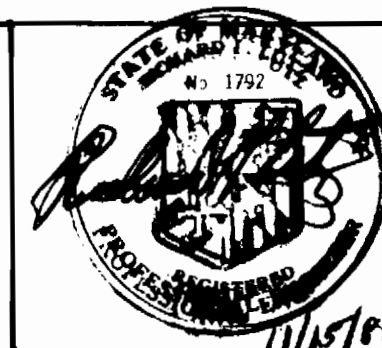
SEDIMENT CONTROL MEASURES FOR THIS CONTRACT WILL BE IMPLEMENTED IN ACCORDANCE WITH ARTICLE 15 OF THOSE SPECIFICATIONS AND SDP-83-132

REVIEWED FOR HOWARD COUNTY SOIL CONSERVATION DISTRICT AND MEETS TECHNICAL REQUIREMENTS  
 APPROVED *[Signature]* 5-7-84  
 SOIL CONSERVATION SERVICE DATE

THIS DEVELOPMENT PLAN IS APPROVED FOR EROSION AND SEDIMENT CONTROL BY HOWARD SOIL CONSERVATION DISTRICT  
 APPROVED *[Signature]* 5/7/84  
 HOWARD SOIL CONSERVATION DISTRICT DATE

DEPARTMENT OF PUBLIC WORKS			
HOWARD COUNTY, MARYLAND			
<i>[Signature]</i> Director of Public Works	date	<i>[Signature]</i> Chief, Bureau of Engineering	date
<i>[Signature]</i> Chief, Bureau of Utilities	5-2-84	<i>[Signature]</i> Chief, Land Development Division	5-14-84

ASSOCIATED ENGINEERS, INC.  
 CIVIL ENGINEERS & LAND SURVEYORS  
 8555 Sixteenth Street, Silver Spring, Maryland 20910  
 301-589 7311

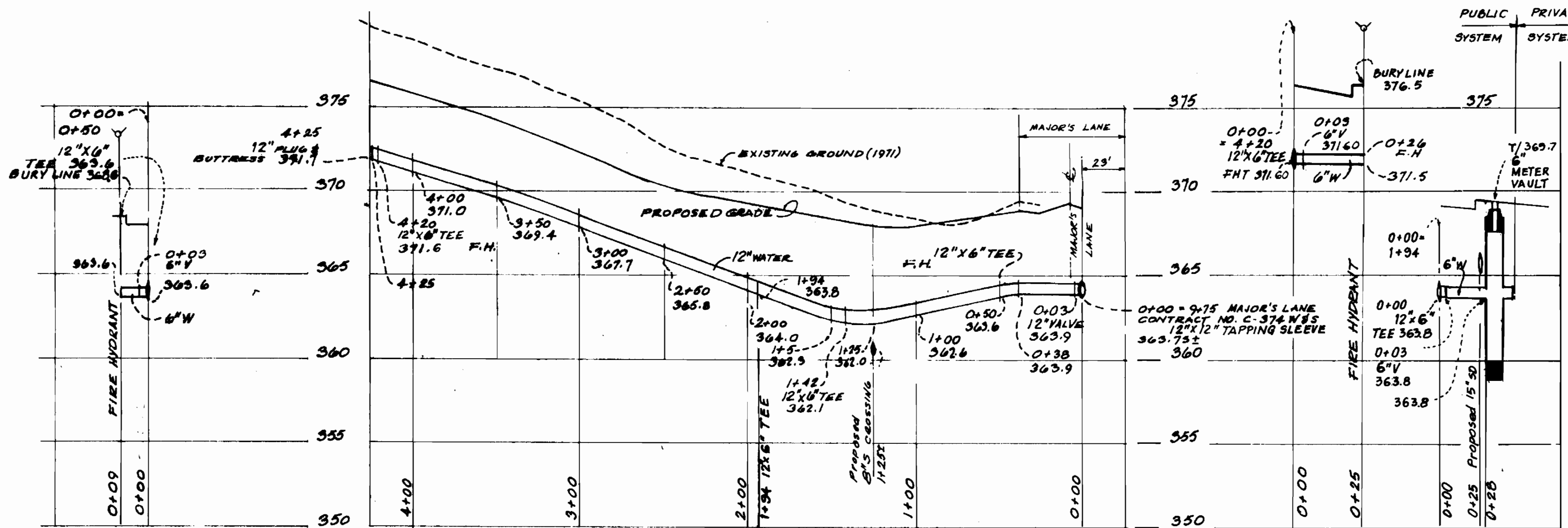


Des.	Drn.	Chk.	date	by	no.	revisions
						3/30/84 REVISED TO INCORPORATE DPW COMMENTS DATED FEB. 16, 1984
						4/16/84 REVISED TO INCORPORATE DPW COMMENTS DATED APRIL 12, 1984

TITLE SHEET

HIGH MEADOW  
 VILLAGE OF LONGREACH  
 COLUMBIA, MARYLAND  
 Section One, Area Two, Parcel "D"  
 CONTRACT NO. 24 - 1198 - D  
 Sixth Election District, Howard Co.

SCALE AS SHOWN  
 Sheet 1 OF 2

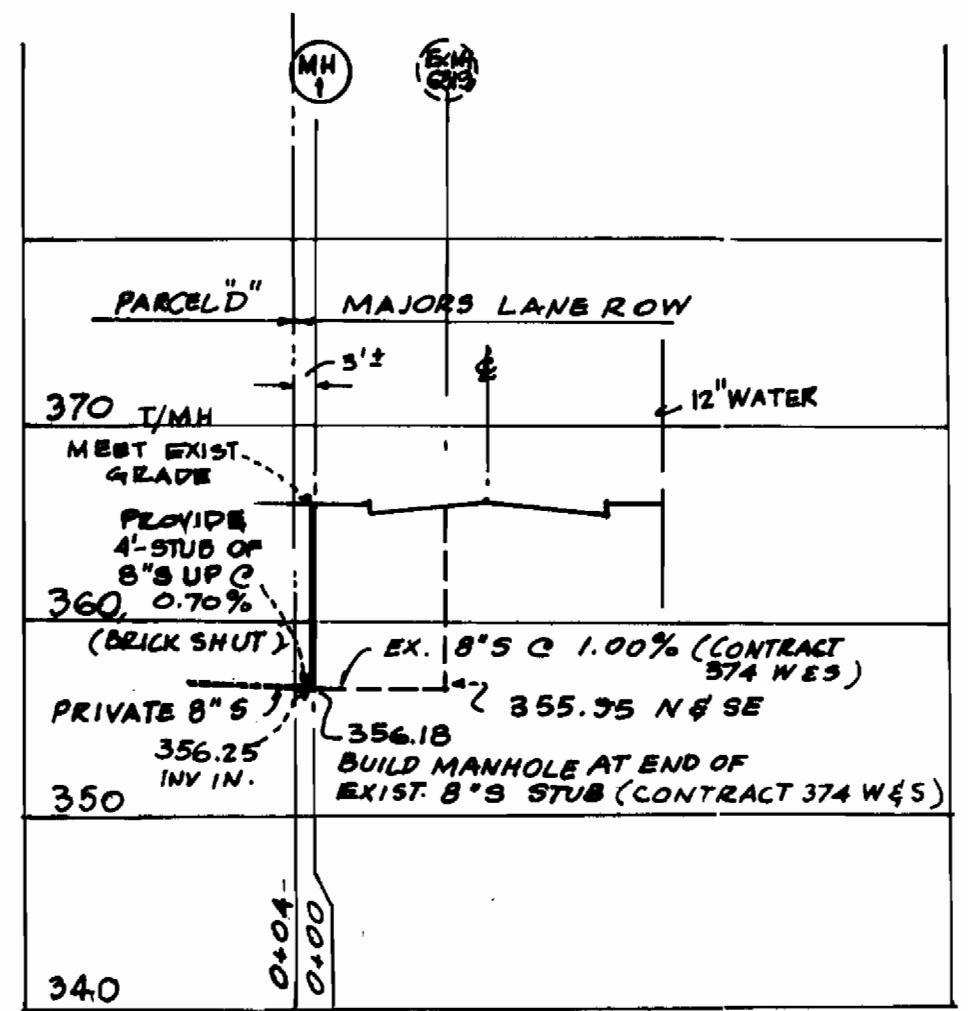


WATER MAIN PROFILE

1" = 50' H  
1" = 5' V

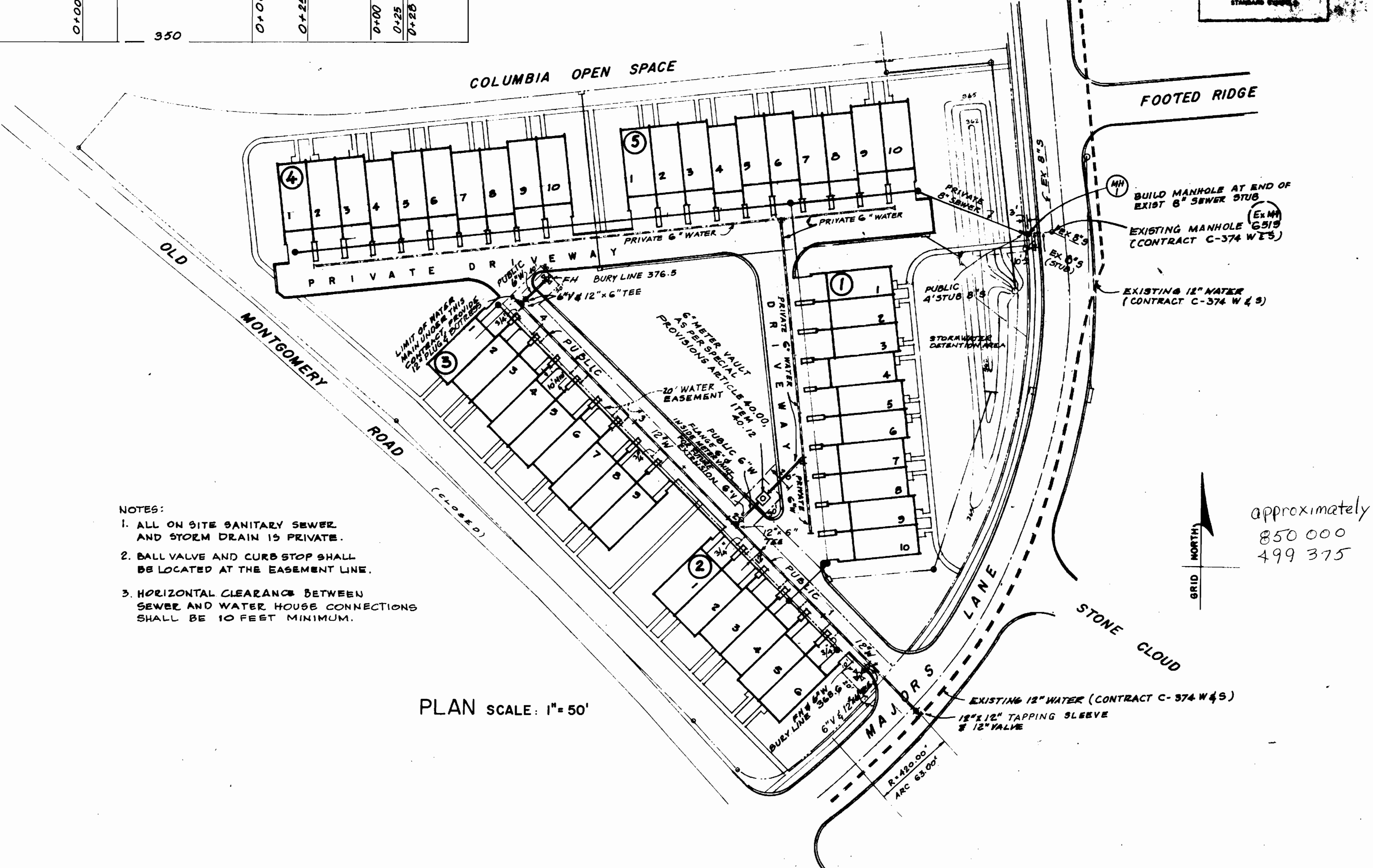
QUANTITIES			
ITEM	EST'D	AS BUILT	SUPPLIER
REFER TO SHEET 1 OF 2			

ITEM	QUANTITY	UNIT	PRICE	TOTAL
[Detailed list of materials and quantities]				



SANITARY SEWER PROFILE

1" = 50' H  
1" = 10' V



PLAN SCALE: 1" = 50'

- NOTES:
- ALL ON SITE SANITARY SEWER AND STEAM DRAIN IS PRIVATE.
  - BALL VALVE AND CURB STOP SHALL BE LOCATED AT THE EASEMENT LINE.
  - HORIZONTAL CLEARANCE BETWEEN SEWER AND WATER HOUSE CONNECTIONS SHALL BE 10 FEET MINIMUM.

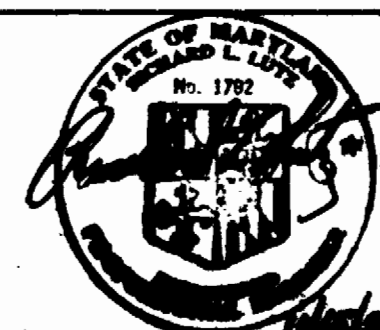
SEDIMENT CONTROL MEASURES FOR THIS CONTRACT WILL BE IMPLEMENTED IN ACCORDANCE WITH ARTICLE 15 OF THESE SPECIFICATIONS

THIS DEVELOPMENT PLAN IS APPROVED FOR EROSION AND SEDIMENT CONTROL BY HOWARD COUNTY SOIL CONSERVATION DISTRICT  
 APPROVED: [Signature] 5/9/84  
 HOWARD COUNTY SOIL CONSERVATION DISTRICT DATE

REVIEWED FOR HOWARD COUNTY SOIL CONSERVATION DISTRICT AND METS TECHNICAL REQUIREMENTS BY [Signature] DATE

DEPARTMENT OF PUBLIC WORKS  
 HOWARD COUNTY, MARYLAND  
 Director of Public Works  
 Chief, Bureau of Engineering  
 Chief, Land Development Division

ASSOCIATED ENGINEERS, INC.  
 CIVIL ENGINEERS & LAND SURVEYORS  
 8555 Sixteenth Street, Silver Spring, Maryland 20910  
 301-589-7311



Des.	Drn.	Chk.	date	by	no.	revisions
			3/30/84			REVISED TO INCORPORATE DPW COMMENTS DATED FEB 16, 1984
			4/16/84			REVISED TO INCORPORATE DPW COMMENTS DATED APRIL 12, 1984

PLAN & PROFILE  
 WATER MAIN  
 EXTENSION

HIGH MEADOW  
 VILLAGE OF LONGREACH  
 COLUMBIA, MARYLAND  
 Section One, Area Two, Parcel "D"  
 CONTRACT NO. 24 - 1198-D  
 Sixth Election District, Howard Co.

SCALE AS SHOWN  
 Sheet 2 OF 2