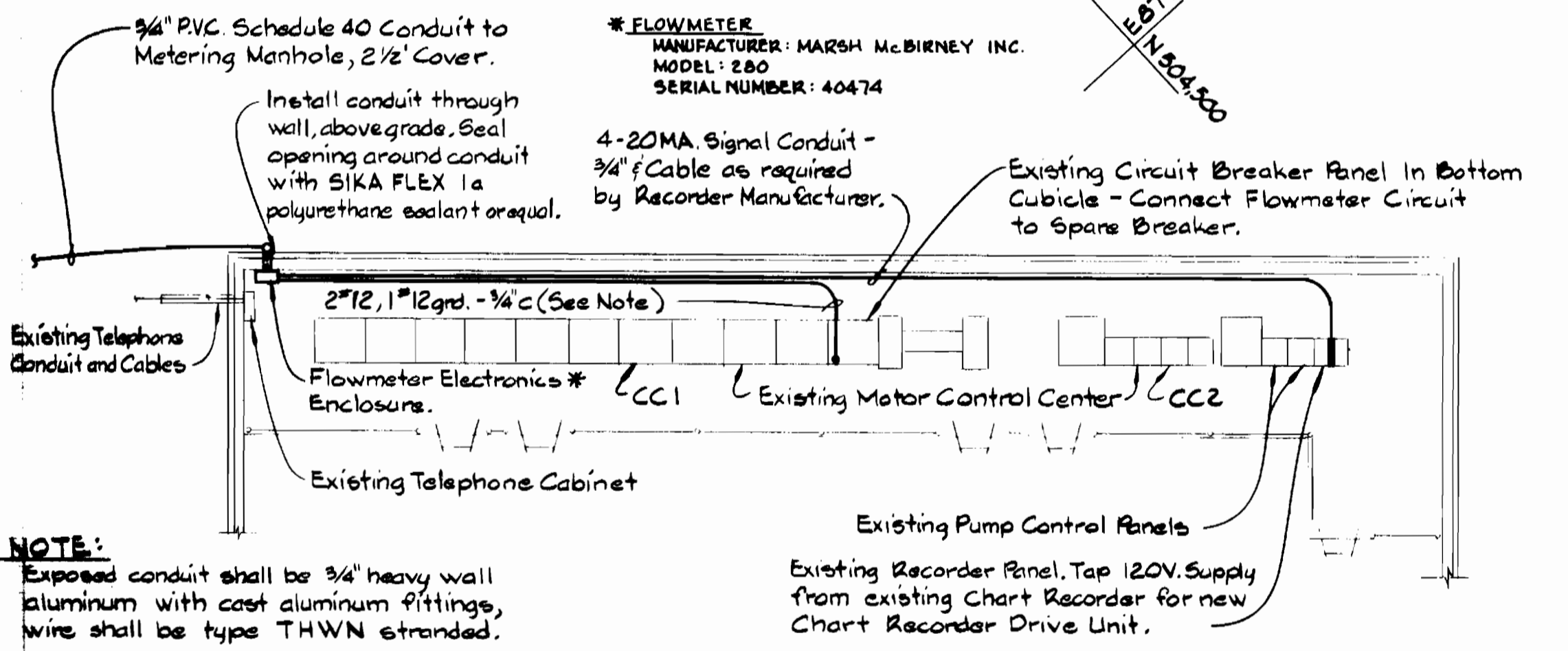


I-95

Property of STATE OF MARYLAND  
Plat No. 31902

**PLAN**  
Scale: 1"=30'



**PLAN OF PUMPING STATION BALCONY**  
Scale: 1/8"=1'-0"

Sediment Control Measures for this Contract will be implemented in accordance with Article 15 of the Standard Specifications.

**REVIEWED FOR HOWARD SOIL CONSERVATION DISTRICT AND MEETS TECHNICAL REQUIREMENT**  
Signature: [Signature]  
DATE: 5-10-84

U.S. SOIL CONSERVATION SERVICE  
This Development Plan is approved for Soil Erosion and Sediment Control by the Howard County Conservation District.  
APPROVED: [Signature]  
DATE: 5-10-84

**DEVELOPER'S CERTIFICATION**  
I/WE CERTIFY THAT ALL DEVELOPMENT AND CONSTRUCTION WILL BE DONE ACCORDING TO THIS PLAN, AND THAT ANY RESPONSIBLE PERSONNEL INVOLVED IN THE CONSTRUCTION PROJECT WILL HAVE A CERTIFICATE OF ATTENDANCE AT A DEPARTMENT OF NATURAL RESOURCES APPROVED TRAINING PROGRAM FOR THE CONTROL OF SEDIMENT AND EROSION BEFORE BEGINNING THE PROJECT.  
[Signature]  
DATE: 5-10-84

**ENGINEER'S CERTIFICATION**  
I CERTIFY THAT THIS PLAN FOR EROSION AND SEDIMENT CONTROL REPRESENTS A PRACTICAL AND WORKABLE PLAN BASED ON MY PERSONAL KNOWLEDGE OF THE SITE CONDITIONS AND THAT IT WAS PREPARED IN ACCORDANCE WITH THE REQUIREMENTS OF THE HOWARD COUNTY SOIL CONSERVATION DISTRICT.  
[Signature]  
DATE: 4-6-84

BUREAU OF ENGINEERING  
DEPARTMENT OF PUBLIC WORKS

KENNETH A. MCCORD P.E. 1974

DEPARTMENT OF PUBLIC WORKS  
HOWARD COUNTY, MARYLAND  
Director of Public Works - DATE: 5-15-84  
Chief - Bureau of Engineering - DATE: [Signature]  
Chief - Bureau of Utilities - DATE: 5-14-84  
Chief Utilities Division - DATE: [Signature]

WHITMAN, REQUARDT AND ASSOCIATES ENGINEERS  
2315 ST. PAUL ST.  
BALTIMORE, MARYLAND

DES: E.F.D.  
DRN: J.R.K.  
CHK: R.B.N.  
DATE: 4/6/84

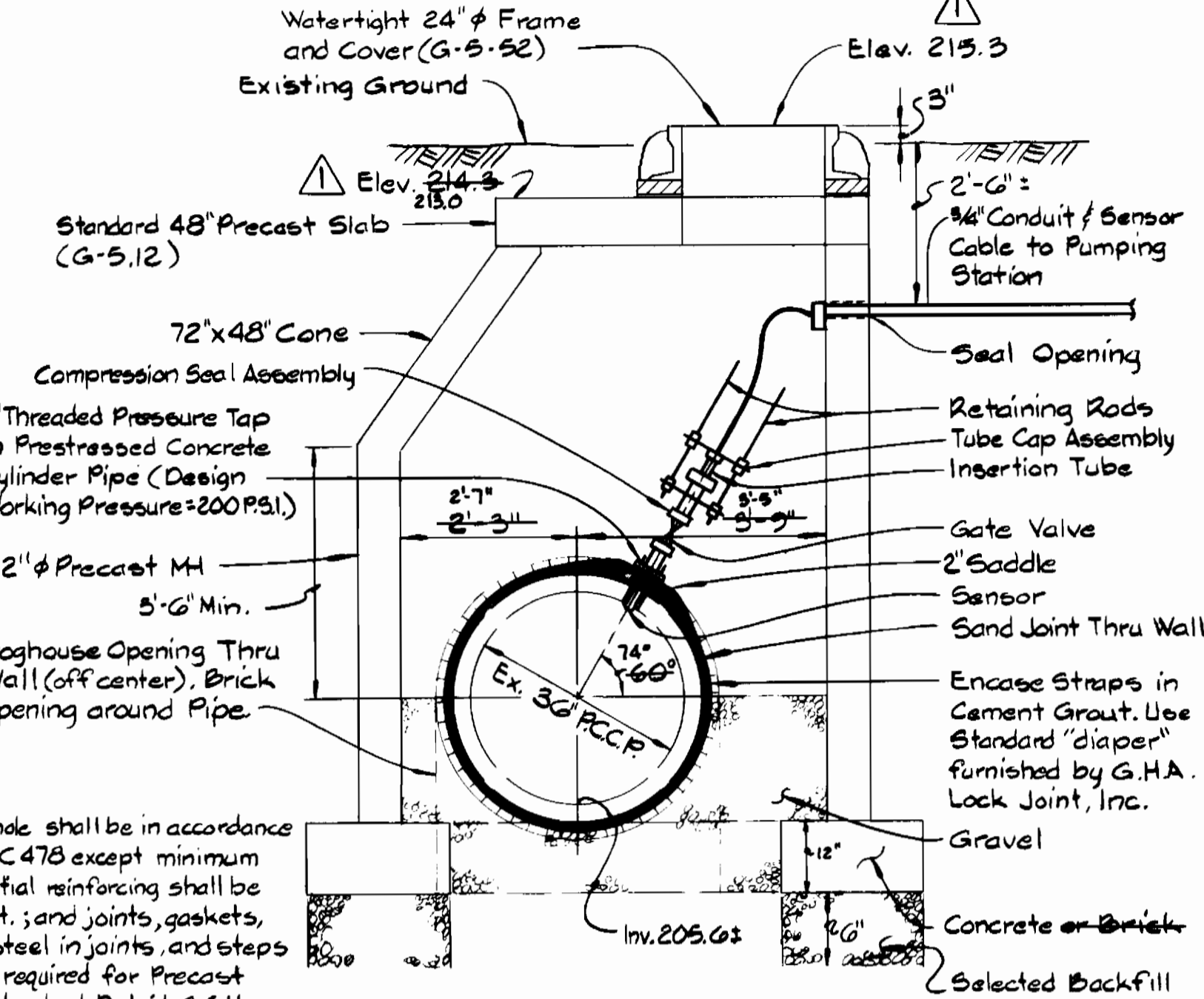
BY	NO.	REVISION	DATE
J.R.K.	1	Changed Elevation, Added Totalizer	4/23/84

ELKRIDGE WATER PUMPING STATION  
METERING IMPROVEMENTS

ELKRIDGE ELECTION DISTRICT NO. 1  
PROJECT NO. W-8141  
CONTRACT NO. 44-1192

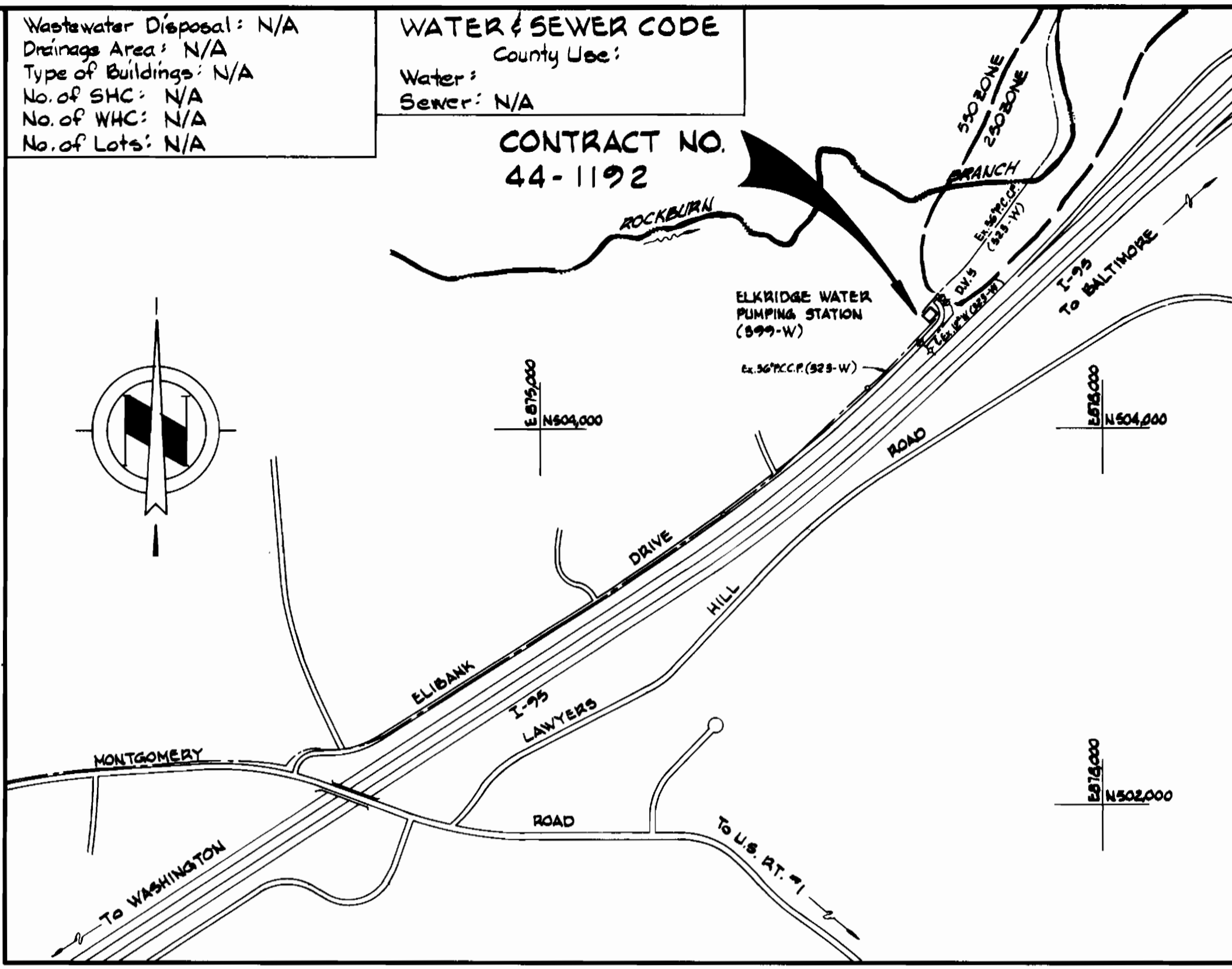
SCALE AS SHOWN  
SHEET 1 OF 1

**NOTE:**  
Rotate Manhole Frame and Cover 60° Counterclockwise from E. of 36" P.C.C.P. See Plan.



**METERING MANHOLE**  
Scale: 1/2"=1'-0"

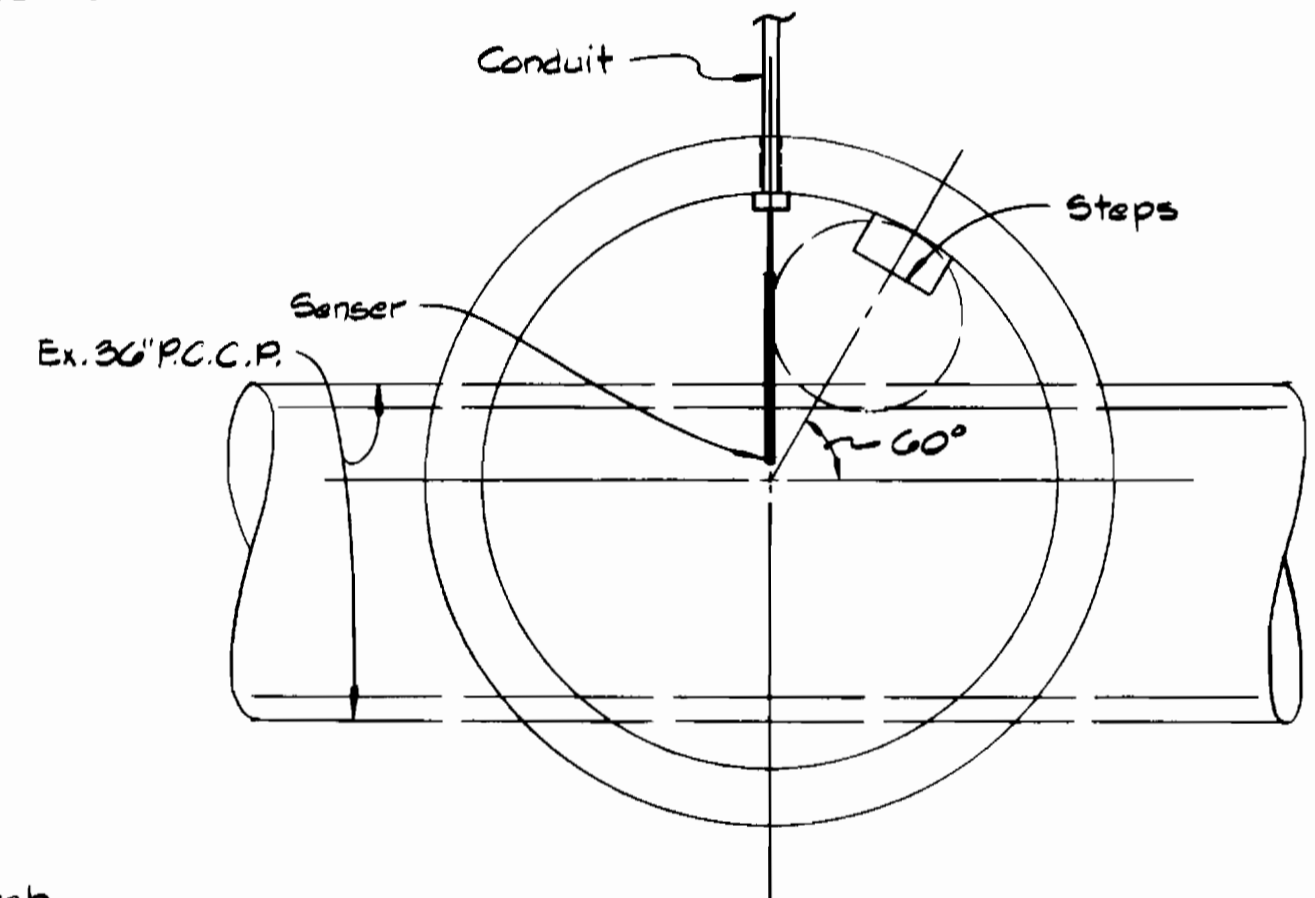
**NOTE:**  
Precast Manhole shall be in accordance with A.S.T.M. C 478 except minimum circumferential reinforcing shall be 0.25 sq. in./ft. and joints, gaskets, additional steel in joints, and steps shall be as required for Precast Manholes, Standard Detail G-311.



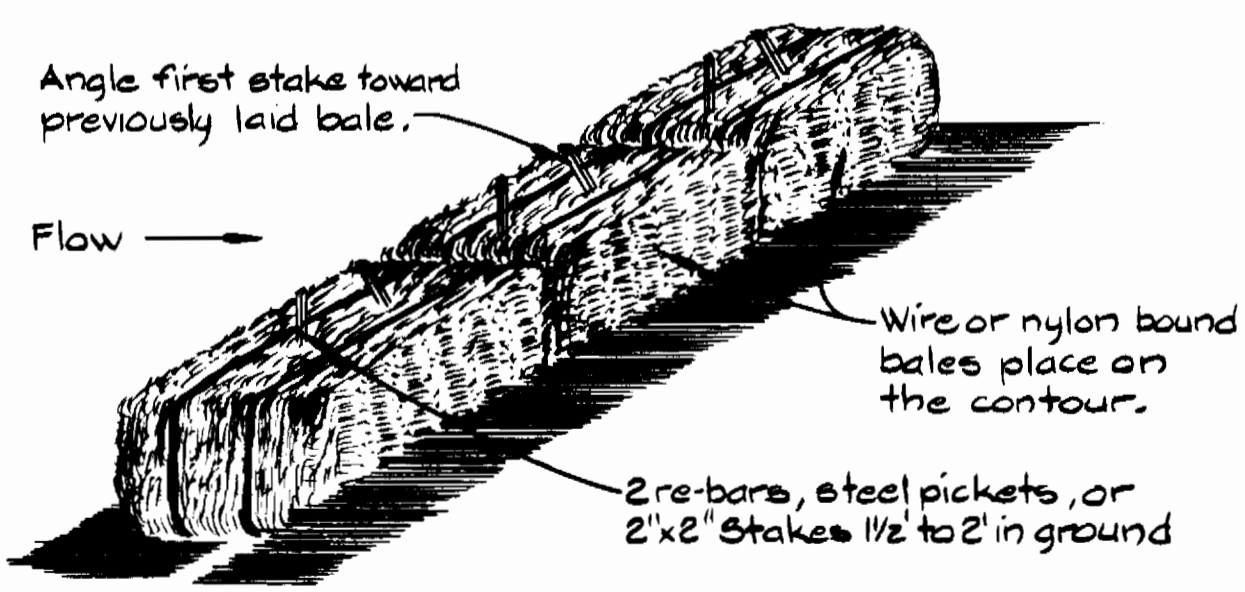
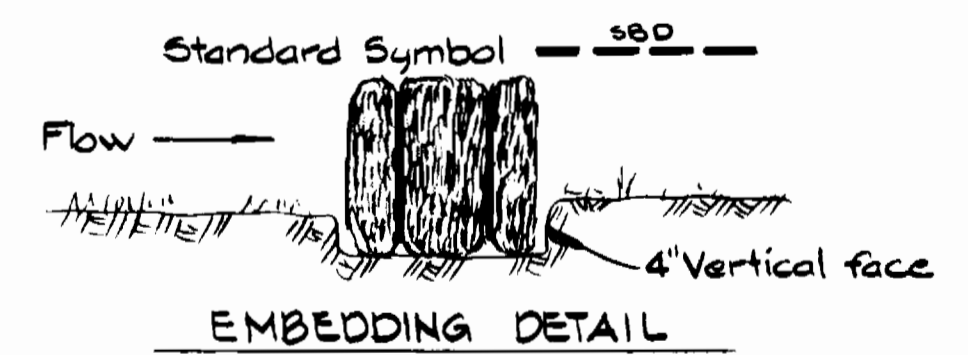
**VICINITY MAP**  
Scale: 1"=600'

**GENERAL NOTES**

- APPROXIMATE LOCATION OF EXISTING MAINS ARE SHOWN. THE CONTRACTOR SHALL TAKE ALL NECESSARY PRECAUTIONS TO PROTECT EXISTING MAINS AND SERVICES AND MAINTAIN UNINTERRUPTED SUPPLY. ANY DAMAGE INCURRED SHALL BE REPAIRED IMMEDIATELY TO THE SATISFACTION OF THE ENGINEER, AT THE CONTRACTOR'S EXPENSE.
- ALL HORIZONTAL CONTROLS ARE BASED ON MARYLAND STATE COORDINATES.
- ALL VERTICAL CONTROLS ARE BASED ON U.S.G.S. DATUM.
- ALL PIPE ELEVATIONS SHOWN ARE INVERT ELEVATIONS.
- CLEAR ALL UTILITIES BY A MINIMUM OF 6". CLEAR ALL POLES BY 2'-0" MINIMUM OR TUNNEL AS REQUIRED. ANY COST INCURRED TO THE CONTRACTOR FOR TUNNELING OR BRACING AT POLES SHALL BE INCLUDED IN UNIT PRICES BID FOR CONSTRUCTION OF THE MAIN.
- FOR DETAILS NOT SHOWN ON THE DRAWINGS USE HOWARD COUNTY STANDARD DETAILS.
- FOR MATERIALS AND CONSTRUCTION METHODS USE HOWARD COUNTY STANDARD SPECIFICATIONS.
- CONTRACTOR SHALL LOCATE EXISTING UTILITIES A MINIMUM OF TWO (2) WEEKS IN ADVANCE OF CONSTRUCTION OPERATIONS IN THE VICINITY OF PROPOSED UTILITIES AT HIS OWN EXPENSE.
- CONTRACTOR SHALL NOTIFY THE FOLLOWING UTILITIES OR AGENCIES AT LEAST FIVE (5) WORKING DAYS BEFORE STARTING WORK SHOWN ON THESE PLANS:  
BALTIMORE GAS & ELECTRIC COMPANY - UNDERGROUND CUSTOMER SERVICE - 685-0123.  
"MISS UTILITY" - 1 - 559-0100  
CHESAPEAKE & POTOMAC (C&P) TELEPHONE COMPANY - 593-3645.  
BUREAU OF UTILITIES HOWARD COUNTY - 992-2366.
- THE CONTRACTOR SHALL NOT OPERATE ANY WATER MAIN VALVES ON THE EXISTING SYSTEM.
- ALL CONCRETE SHALL BE MIX NO. 3.
- SOB ALL DISTURBED GRASSED AREAS.
- CONTRACTOR SHALL NOT TAP EXISTING 36" P.C.C.P. WITHOUT BUREAU OF UTILITIES PRESENT. 48 HOUR PRIOR NOTICE IS REQUIRED.



**PLAN OF METERING MANHOLE**  
Scale: 1/2"=1'-0"



**ANCHORING DETAIL STRAW BALE DIKE**

Diary: FB #6937

BILL OF MATERIALS SCHEDULE	
ITEM	MANUFACTURER
Manhole	ATLANTIC PRECAST / BIC UTILITY SUPPLY
Pressure Tap	MARSH Mc BIRNEY INC.
Metering System	MARSH Mc BIRNEY INC.
Flow Recorder	B.I.F. STRIP