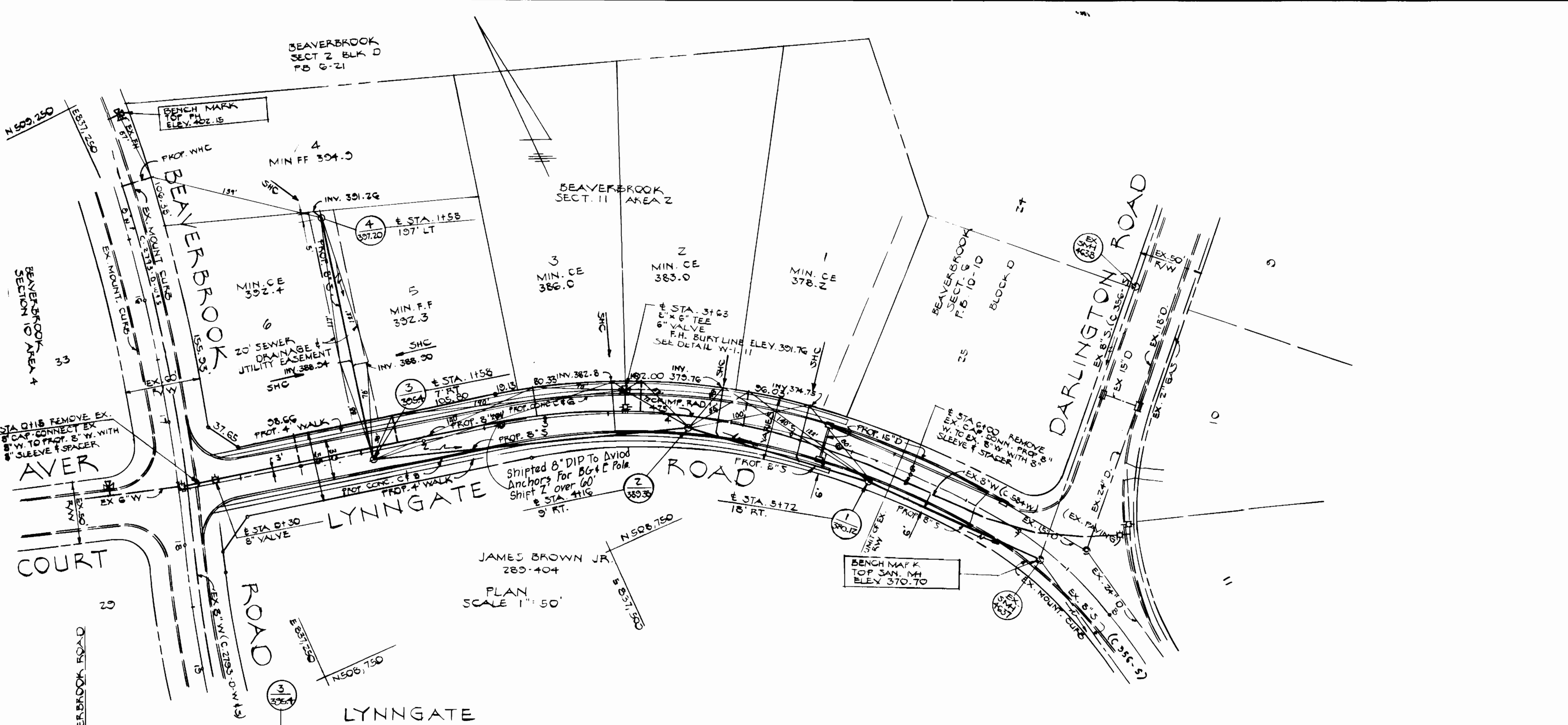


VICINITY MAP  
SCALE: 1"=600'

TYPE OF BUILDINGS	SINGLE FAM. DWLS.
NUMBER OF LOTS	6
NUMBER OF WATER HOUSE CONNECTIONS	6
NUMBER OF SEWER HOUSE CONNECTIONS	6
DAMAGE AREA	LITTLE PATIENT

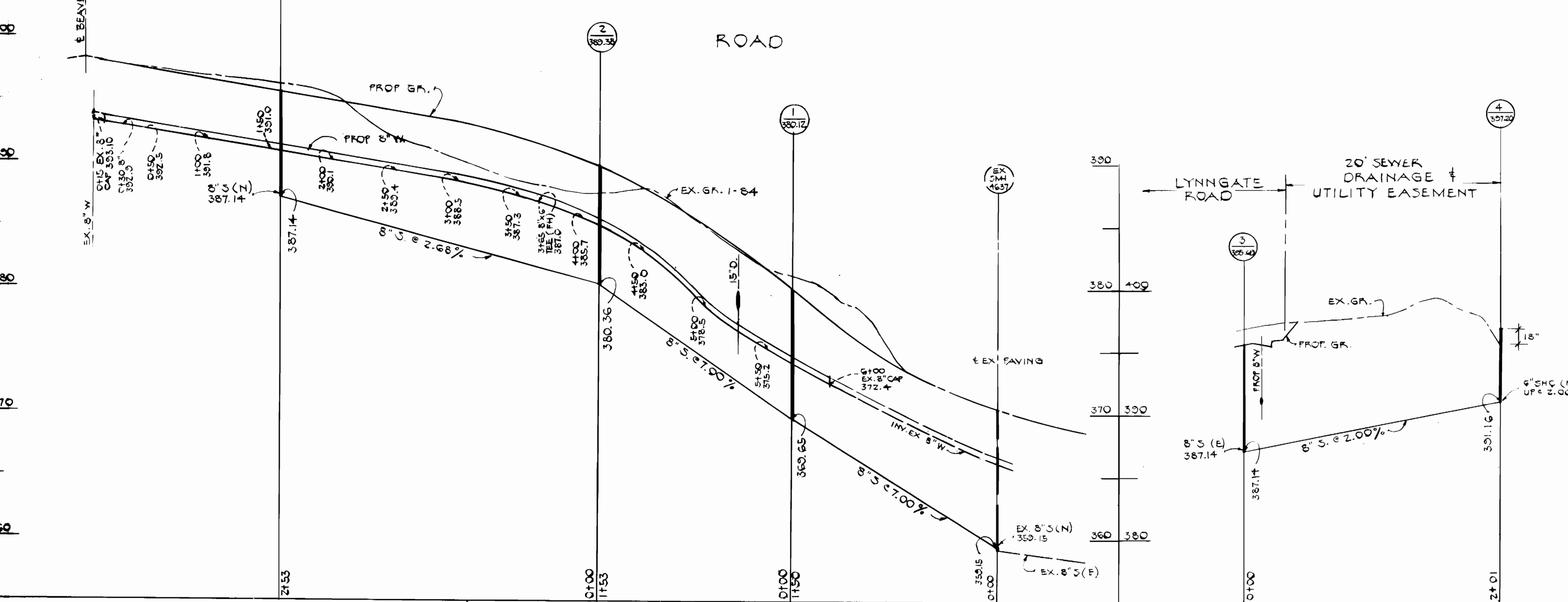
WATER AND SEWER CODE  
FOR COUNTY USE  
WATER NO. E-33  
SEWER NO. 5602300



PLAN  
SCALE 1"=50'

GENERAL NOTES

- ALL WATER MAINS TO BE C.I.P., OR D.I.P. UNLESS OTHERWISE SHOWN.
- TOP OF ALL WATER MAINS TO HAVE A MINIMUM OF 3-6 FT COVER UNLESS OTHERWISE NOTED.
- ALL VALVES SHALL BE STRAPPED TO TEES IN ACCORDANCE WITH STANDARD DETAILS.
- BLOCK ALL FITTINGS WITH CONCRETE, SEE STANDARDS BOUND IN SPECIFICATIONS.
- BURY LINE ELEVATIONS ON FIRE HYDRANTS SHALL BE SET TO THE ELEVATIONS SHOWN ON THE DRAWINGS. ALL FIRE HYDRANTS SHALL BE STRAPPED AND BUTTRESSED WITH CONCRETE IN ACCORDANCE WITH STANDARD DETAILS. SOIL AROUND THE FIRE HYDRANTS TO BE COMPACTED IN ACCORDANCE WITH SECTION 1003.100 OF THE STANDARD SPECIFICATIONS.
- ALL SANITARY SEWERS SHALL BE C.S.P.R., 1/2" OR 3/4" OR 1" OR 1 1/2" UNLESS OTHERWISE NOTED.
- THE CONTRACTOR SHALL PROVIDE A JOINT IN ALL SEWER MAINS WITHIN 2'-0" OF EXTERIOR MANHOLE WALL.
- ALL MANHOLES SHALL BE 4'-0" INSIDE DIAMETER.
- APPROXIMATE LOCATIONS OF EXISTING MAINS ARE SHOWN. THE CONTRACTOR SHALL TAKE ALL NECESSARY PRECAUTIONS TO PROTECT EXISTING MAINS AND SERVICES AND MAINTAIN UNINTERRUPTED SUPPLY. ANY DAMAGE INCURRED SHALL BE REPAIRED IMMEDIATELY TO THE SATISFACTION OF THE INSPECTOR AT THE CONTRACTOR'S EXPENSE.
- ALL HORIZONTAL CONTROLS ARE BASED ON MARYLAND STATE COORDINATES.
- ALL VERTICAL CONTROLS ARE BASED ON U.S.G.S. DATUM.
- ALL PIPE ELEVATIONS SHOWN ARE INVERT ELEVATIONS.
- CLEAR ALL UTILITIES BY A MINIMUM OF 6" CLEAR. ALL POLES BY 2'-0" MINIMUM OR TUNNEL AS REQUIRED. COSTS INCURRED SHALL BE INCLUDED IN UNIT PRICES FOR EXCAVATION AND BACKFILL.
- FOR ALL STANDARD DETAILS SEE STANDARDS BOUND IN SPECIFICATIONS.
- CONTRACTOR SHALL LOCATE EXISTING UTILITIES 2 WKS. IN ADVANCE OF CONSTRUCTION OPERATIONS IN THE VICINITY OF PROPOSED UTILITIES AT HIS OWN EXPENSE.
- CONTRACTOR SHALL NOTIFY THE FOLLOWING UTILITIES OF AGENCIES AT LEAST FIVE (5) DAYS BEFORE STARTING WORK: HOWARD CO BUREAU OF UTILITIES 330-2300  
STATE HIGHWAY ADMINISTRATION 551-5535  
BALTIMORE G & E CO - UNDERGROUND ELECTRIC DISTRIBUTION-CUSTOMER SERVICE 685-0125  
ENGINEERING - DAMAGE CONTROL 234-5821  
BALTIMORE G & E CO - UNDERGROUND GAS DISTRIBUTION-CUSTOMER SERVICE 685-0125  
MISS UTILITY 1-580-0100  
C & P TELEPHONE CO. 725-3076  
A.T. & T. CABLE LOCATION DIVISION 301-303-3553  
COLONIAL PIPELINE CO. 781-4641
- CONTRACTOR SHALL REMOVE TREES, STUMPS, AND ROOTS ALONG LINE OF EXCAVATION AS DIRECTED BY THE ENGINEER. PAYMENT FOR SUCH REMOVAL SHALL BE INCLUDED IN THE UNIT PRICE BID FOR EXCAVATION AND BACKFILL OF WATER & SEWER MAINS.
- PLACE REGULATION MEN WORKING AND WARNING SIGNS AS REQUIRED TO COMPLY WITH M.S.H.A. MANUAL OF TRAFFIC CONTROL FOR HIGHWAY CONSTRUCTION AND MAINTENANCE OPERATIONS.
- ALL WATER HOUSE CONNECTIONS SHALL BE FOR AN INSIDE METER SETTING. SEE SPEC. PROJ.
- THE CONTRACTOR SHALL NOT OPERATE ANY WATER MAIN VALVES ON EXISTING SYSTEM.
- FOR ALL COOPER WATER HOUSE CONNECTIONS, UTILIZE FLARED TIE FITTINGS ONLY.
- WATER MAIN AND WATER HOUSE CONNECTIONS MUST HAVE A MINIMUM OF 1 FOOT SEPARATION FROM THE SANITARY SEWER AND SEWER HOUSE CONNECTIONS AS THEY CROSS EXCEPT AT CROSSINGS, WATER AND SEWER LINES HAVE A MINIMUM HORIZONTAL SEPARATION OF 10'



20' SEWER DRAINAGE & UTILITY EASEMENT

THIS PLAN IS APPROVED FOR SOIL EROSION AND SEDIMENT CONTROL BY THE HOWARD SCD:  
*James M. John* 9-18-84  
HOWARD SCD DATE  
REVIEWED FOR HOWARD SCD AND MEETS TECHNICAL REQUIREMENTS  
*Stephen L. Miller* 9-18-84  
U.S. SOIL CONSERVATION SERVICE DATE

SEDIMENT CONTROL MEASURES FOR THIS CONTRACT WILL BE IMPLEMENTED IN ACCORDANCE WITH ARTICLE 15 OF THE HOWARD CO STANDARD SPECIFICATIONS AND AS PER ROAD CONSTRUCTION PLANS FOR F 84-172

ITEM	QUANTITIES		
	BID	AS-BUILT	SUPPLIER
6" SHC	155 LF	154 LF	J.M. Manufacturing
3/4" WHC	142 LF	124	Howell Metal
8" SEWER	757 LF	745 LF	J.M. Manufacturing
MANHOLES	4 EACH	4	Terre Hill
8" WATER	587 LF	567	GRIPPIN PIPE
8" VALVE	1 EACH	1	US Pipe & Foundry
FIRE HYDRANTS	1 EACH	1	

DEPARTMENT OF PUBLIC WORKS  
HOWARD COUNTY, MARYLAND  
9-25-84  
9-17-84

HUCKINS ASSOCIATES, INC.  
101 SHELL BUILDING  
200 EAST JOFFA ROAD  
TOWSON, MARYLAND 21204  
828-3060

DES: DWB  
DRN: DWB  
CHK: AL  
DATE: 2/5/85  
BY NO. 1  
REVISION Lot No.s 4, 5, 6

WATER AND SEWER  
PLAN AND PROFILE  
600' SCALE MAP NO. 30 BLOCK NO.

LYNNGATE ROAD  
BEAVERBROOK CONT. 24-1186-D  
SECTION II AREA 2  
ELECTION DISTRICT 5  
HOWARD COUNTY, MARYLAND  
SCALE AS SHOWN  
SHEET 1 OF 1