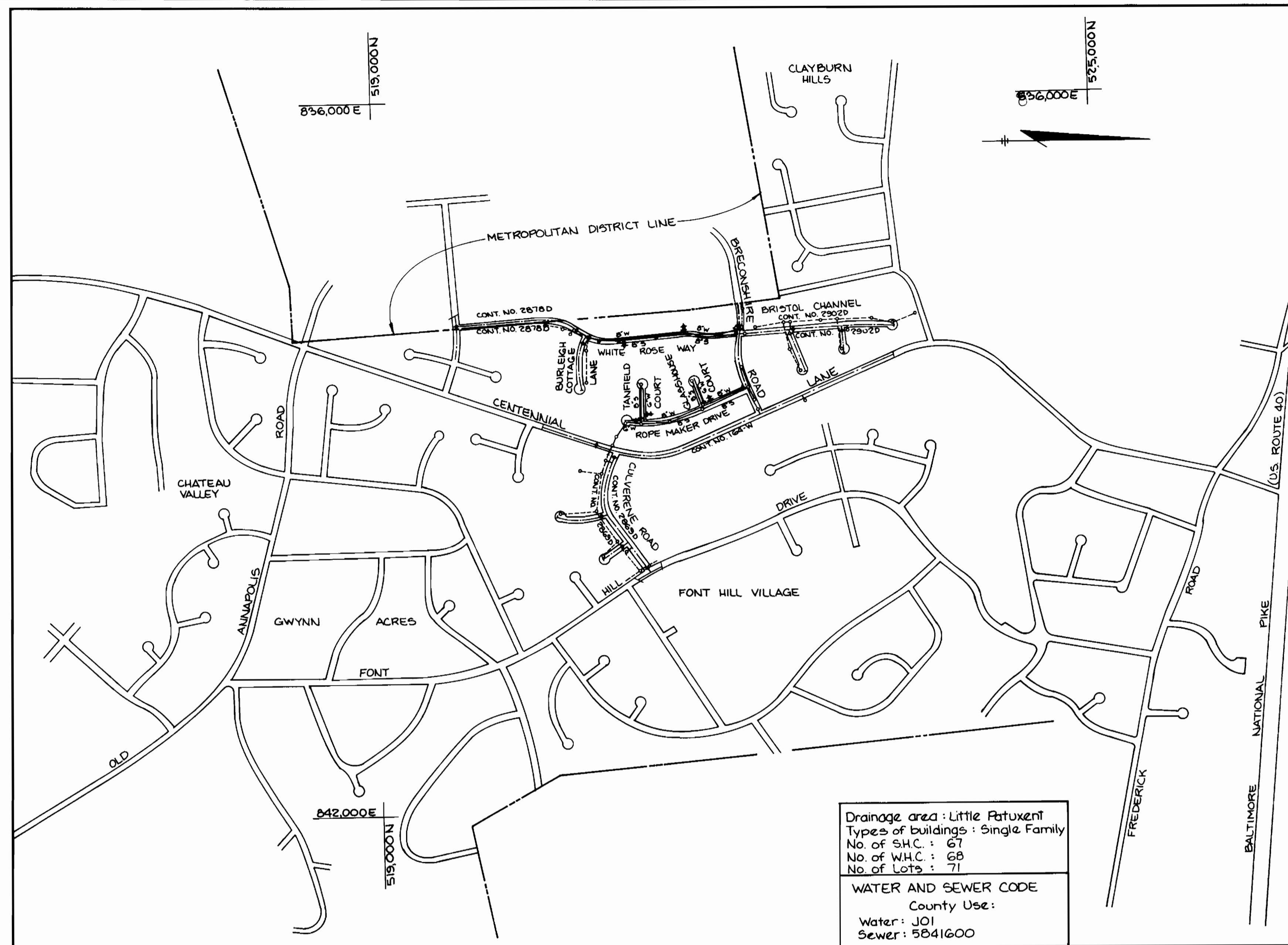


**GENERAL NOTES**

1. THE APPROXIMATE LOCATIONS OF EXISTING MAINS ARE SHOWN. THE CONTRACTOR SHALL TAKE ALL NECESSARY PRECAUTIONS TO PROTECT EXISTING UTILITIES AND TO MAINTAIN UNINTERRUPTED SERVICE. ANY DAMAGE INCURRED DUE TO THE CONTRACTORS OPERATION SHALL BE REPAIRED IMMEDIATELY AT THE CONTRACTORS EXPENSE.
2. ALL HORIZONTAL CONTROLS ARE BASED ON MARYLAND STATE COORDINATES.
3. ALL VERTICAL CONTROLS ARE BASED ON U.S.G.S. DATUM.
4. ALL PIPE ELEVATIONS SHOWN ARE INVERT ELEVATIONS.
5. CLEAR ALL UTILITIES BY A MINIMUM OF 6". CLEAR ALL POLES BY 2'-0" MINIMUM OR TUNNEL AS REQUIRED. ANY COST INCURRED TO THE CONTRACTOR FOR TUNNELING OR BRACING AT POLES SHALL BE INCLUDED IN UNIT PRICES BID FOR EXCAVATION AND BACKFILL.
6. FOR DETAILS NOT SHOWN ON THE DRAWINGS USE HOWARD COUNTY STANDARD DETAILS.
7. FOR MATERIALS AND CONSTRUCTION METHODS USE HOWARD COUNTY STANDARD SPECIFICATIONS.
8. CONTRACTOR SHALL LOCATE EXISTING UTILITIES A MINIMUM OF TWO (2) WEEKS IN ADVANCE OF CONSTRUCTION OPERATIONS IN THE VICINITY OF PROPOSED UTILITIES AT HIS OWN EXPENSE.
9. CONTRACTOR SHALL NOTIFY THE FOLLOWING UTILITIES OR AGENCIES AT LEAST FIVE (5) WORKING DAYS BEFORE STARTING WORK SHOWN ON THESE PLANS:  
 STATE HIGHWAY ADMINISTRATION 531-5533  
 BALTIMORE GAS AND ELECTRIC COMPANY - UNDERGROUND ELECTRIC DISTRIBUTION CUSTOMER SERVICE 685-0123  
 BALTIMORE GAS AND ELECTRIC COMPANY - UNDERGROUND GAS DISTRIBUTION CUSTOMER SERVICE 685-0123  
 ENGINEER - "DAMAGE CONTROL" 234-5621  
 "MISS UTILITY" 1-559-0100  
 CHESAPEAKE AND POTOMAC (C&P) TELEPHONE COMPANY 725-9976  
 COLONIAL PIPELINE COMPANY 781-4641  
 BUREAU OF UTILITIES HOWARD COUNTY 992-2366
10. TREES ARE TO BE PROTECTED FROM DAMAGE TO MAXIMUM EXTENT. TREES LOCATED WITHIN THE CONSTRUCTION STRIP ARE NOT TO BE REMOVED OR DAMAGED BY THE CONTRACTOR.
11. CONTRACTOR SHALL REMOVE TREES, STUMPS, AND ROOTS ALONG LINE OF EXCAVATION AS DIRECTED BY THE ENGINEER. PAYMENT FOR SUCH REMOVAL SHALL BE INCLUDED IN THE UNIT PRICE BID FOR EXCAVATION & BACKFILL.
12. PLACE REGULATION "MEN WORKING" AND WARNING SIGNS AS REQUIRED TO COMPLY WITH MARYLAND STATE HIGHWAY ADMINISTRATION MANUAL OF TRAFFIC CONTROL FOR HIGHWAY CONSTRUCTION AND MAINTENANCE OPERATIONS.
13. ALL WATER MAINS TO BE C.I.P. OR D.I.P. UNLESS OTHERWISE NOTED.
14. TOP OF ALL WATER MAINS TO HAVE A MINIMUM OF 33" COVER UNLESS OTHERWISE NOTED.
15. VALVES ADJACENT TO TEES SHALL BE STRAPPED TO TEES.
16. BLOCK ALL FITTINGS WITH CONCRETE.
17. BURY LINE ELEVATIONS ON FIRE HYDRANTS SHALL BE SET TO THE ELEVATIONS SHOWN ON THE DRAWINGS. ALL FIRE HYDRANTS SHALL BE STRAPPED AND BUTTRESSED WITH CONCRETE IN ACCORDANCE WITH STANDARD DETAILS. SOIL AROUND THE FIRE HYDRANT TO BE COMPACTED IN ACCORDANCE WITH SECTION 37.01 & 37.05 OF THE STANDARD SPECIFICATIONS.
18. ALL WATER HOUSE CONNECTIONS SHALL BE SET FOR INSIDE METER SETTING.
19. THE CONTRACTOR SHALL NOT OPERATE ANY WATER MAIN VALVES ON THE EXISTING SYSTEM.
20. ALL SEWER MAINS SHALL BE C.S.P.X., V.C.P.X., PVC OR A.C.P. CL. 2400 UNLESS OTHERWISE NOTED.
21. THE CONTRACTOR SHALL PROVIDE A JOINT IN ALL SEWER MAINS WITHIN 2'-0" OF EXTERIOR MANHOLE WALLS.
22. ALL MANHOLES SHALL BE 4'-0" INSIDE DIAMETER, UNLESS OTHERWISE NOTED.
23. MANHOLES DESIGNATED W.T. IN PLAN AND PROFILE SHALL HAVE WATERTIGHT FRAME AND COVERS. STANDARD DETAIL 6-5.52 WHERE WATERTIGHT MANHOLE FRAME AND COVER IS USED. SET TOP OF FRAME 1'-6" ABOVE FINISHED GRADE.
24. HOUSES WITH THE SYMBOL C.N.S. INDICATES THAT CELLAR CAN NOT BE SERVED.
25. NO PIPE SHALL BE LAID UNTIL LINES OF EXCAVATION HAVE BEEN BROUGHT TO SUBGRADE.
26. FOR ALL COPPER WATER HOUSE CONNECTIONS UTILIZE FLARE TYPE FITTINGS ONLY.



**LOCATION MAP**  
SCALE: 1" = 600'

# CONTRACT NO. 24-1175-D-W&S

## BURLEIGH MANOR

### HOWARD COUNTY, MARYLAND

#### DEPARTMENT OF PUBLIC WORKS

SEDIMENT CONTROL MEASURES FOR THIS CONTRACT WILL BE IMPLEMENTED IN ACCORDANCE WITH ARTICLE #15 OF THE HOWARD COUNTY STANDARD SPECIFICATIONS AND AS PER ROAD CONSTRUCTION PLANS #F-84-87

HOWARD SOIL CONSERVATION DISTRICT:  
 REVIEWED FOR HOWARD SOIL CONSERVATION DISTRICT AND MEETS TECHNICAL REQUIREMENTS.  
*James M. Vela* 1-12-84  
 U.S. SOIL CONSERVATION SERVICE DATE

THIS PLAN IS APPROVED FOR SOIL EROSION AND SEDIMENT CONTROL BY THE HOWARD SOIL CONSERVATION DISTRICT.  
*Wm. J. Howe* 1-12-84  
 HOWARD SOIL CONSERVATION DISTRICT DATE

DEPARTMENT OF PUBLIC WORKS  
 HOWARD COUNTY, MARYLAND

*John F. Nemy* 1-17-84  
 DIRECTOR OF PUBLIC WORKS DATE

*Robert M. Reinger* 1-17-84  
 CHIEF - BUREAU OF UTILITIES DATE

*Michael J. ...* 2-10-84  
 CHIEF - BUREAU OF ENGINEERING DATE

*...* 2-10-84  
 CHIEF - LAND DEVELOPMENT DATE

NO. DATE EXISTING STREET NAME CHANGED REVISIONS

1 3-15-84 EXISTING STREET NAME CHANGED

TRACY, SCHULTE & ASSOCIATES INC.  
 planning · architecture · engineering  
 8450 Baltimore National Pike Suite 34 Ellicott City, Maryland 21043

CONTRACT NO. 24-1175-D-W&S

LOCATION MAP OF  
 WATER AND SEWER MAINS

BURLEIGH MANOR  
 ELECTION DISTRICT  
 ELLICOTT CITY NO. 2

DRAWING NO. OF 1 OF 4  
 SCALE AS SHOWN

QUANTITIES			
ITEM	BID	AS BUILT	MATERIAL/SUPPLIER
8" S	3262 LF	3,204 LF	ALANTIC PRECAST
8" W	2227 LF	2,250 LF	BELAIR
6" W	836 LF	845 LF	BELAIR
6" SHC	1357 LF	1,347 LF	ATLANTIC STATES
1" WHC	752 LF	617 LF	ATLANTIC STATES
3/4" WHC	549 LF	942 LF	MUNICIPAL
F.H	4 NO.	4 EA.	MUNICIPAL
6" VALVES	3 NO.	3 EA.	MUNICIPAL
MHS	13 NO.	13 EA.	APP WES
8" VALVES		1 EA.	MUNICIPAL
6" 1/2" 4LB.		1 EA.	MUNICIPAL
1 1/2" BLOWOFF		1 EA.	



*James H. Stagg*  
 Burleigh Manor  
 Section 4 Area 5

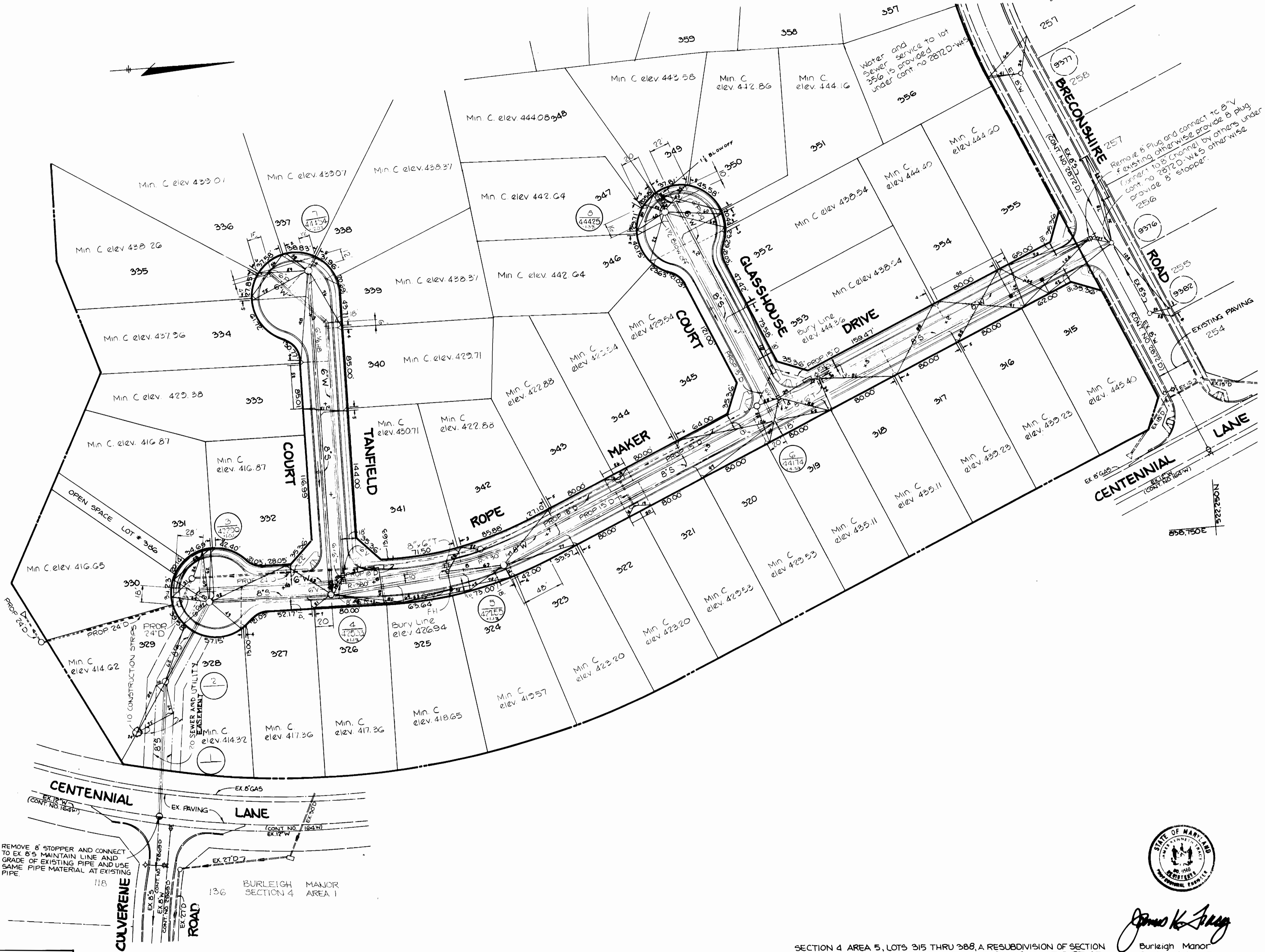
SECTION 4 AREA 5, LOTS 315 THRU 388, A RESUBDIVISION OF SECTION 4 AREA 3, LOTS 205 THRU 253, AND A RESUBDIVISION OF PART OF SECTION 4 AREA 4, PARCEL C AND LOTS 186 THRU 204.

For continuation see drawing no 3



N 051 22 25 E  
838.750 E

N 051 02 25 E  
838.750 E



*James K. Jurg*  
Burleigh Manor  
Section 4 Area 5  
Cont. No. 24-1175D-W45

SECTION 4 AREA 5, LOTS 315 THRU 388, A RESUBDIVISION OF SECTION 4 AREA 3, LOTS 205 THRU 253; AND A RESUBDIVISION OF PART OF SECTION 4 AREA 4, PARCEL C AND LOTS 186 THRU 204.

DEPARTMENT OF PUBLIC WORKS  
HOWARD COUNTY, MARYLAND  
*John F. Neuman* 2-17-84  
DIRECTOR OF PUBLIC WORKS DATE  
*Robert M. Bejerman* 1-17-84  
CHIEF - BUREAU OF UTILITIES DATE  
*William F. ...* 2-16-84  
CHIEF - LAND DEVELOPMENT DATE

TRACY, SCHULTE & ASSOCIATES INC.  
planning architecture engineering  
8450 B... National Pike... Ellicott City Maryland 21143

CONTRACT NO. 24-1175-D-W45

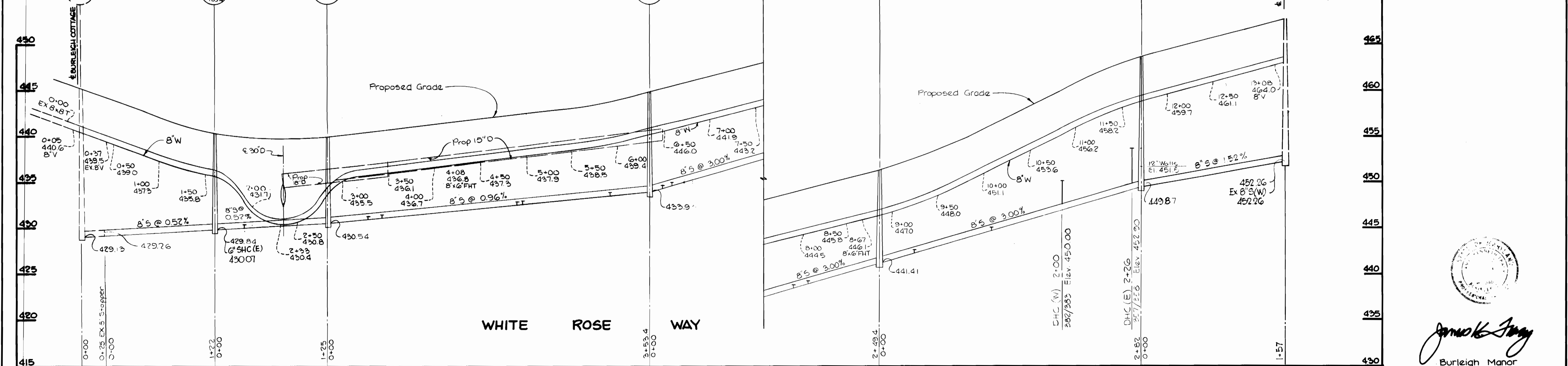
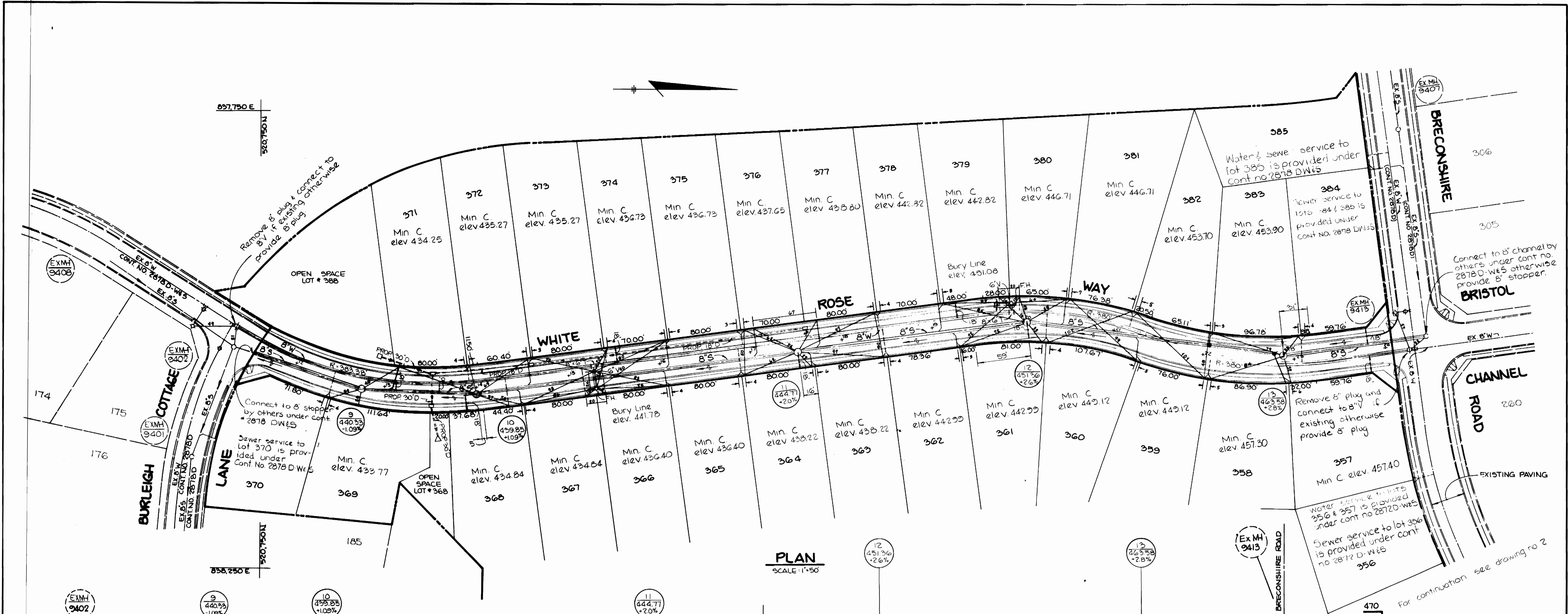
PLAN OF  
WATER AND SEWER MAINS

BURLEIGH MANOR  
ELECTION DISTRICT  
ELLCOTT CITY NO. 2

DRAWING NO. 2 OF 4  
SCALE 1" = 50'

45-BUILT AUG. 22, 1984

JANUARY 10, 1984



DEPARTMENT OF PUBLIC WORKS  
 HOWARD COUNTY, MARYLAND  
 Director: *John F. Neuma* 2-17-84  
 Chief - Bureau of Engineering: *Robert B. ...* 2-16-84

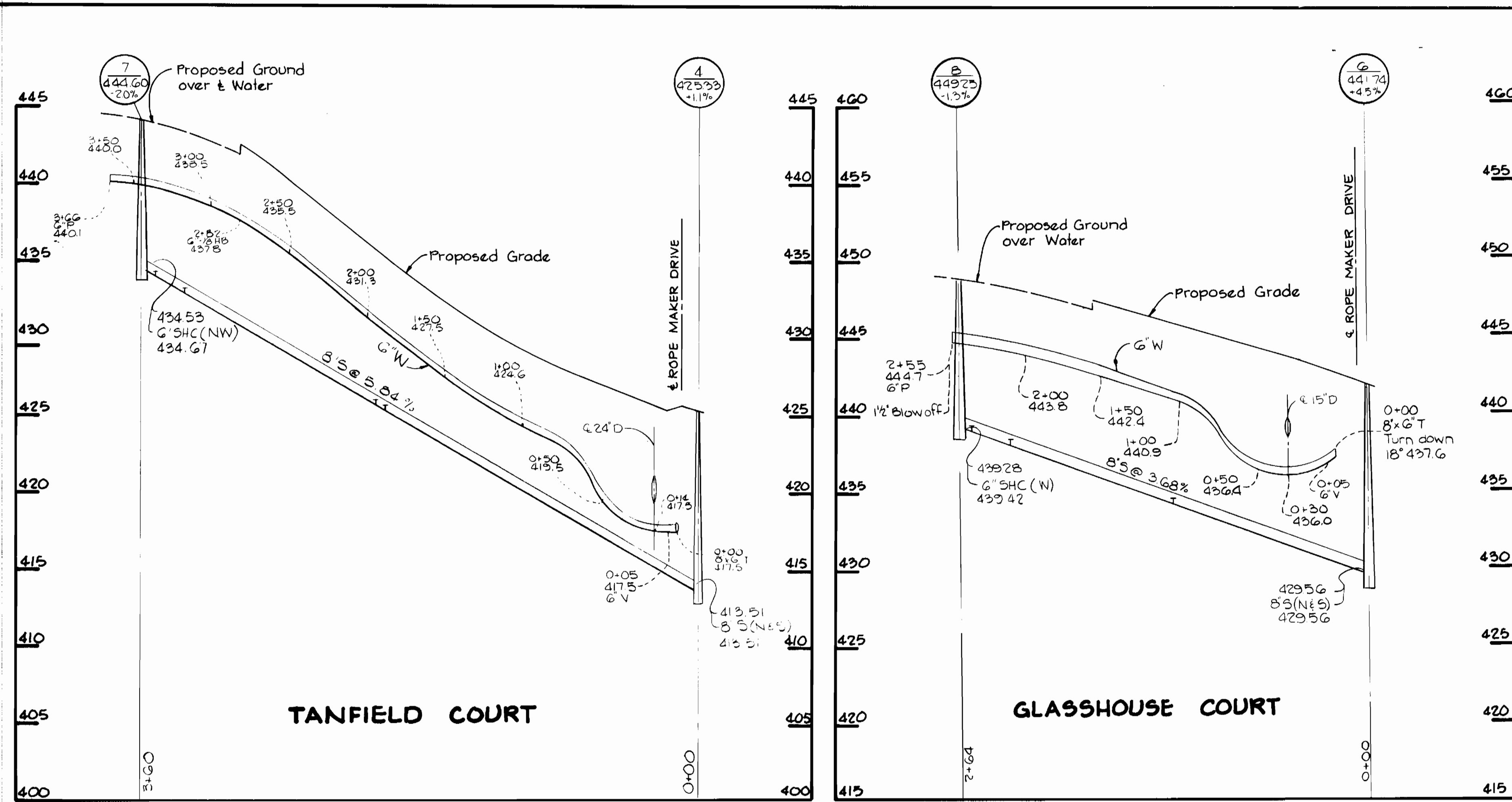
NO. DATE REVISIONS  
 1 3-15-84 EXISTING STREET NAME CHANGED  
 TRACY, SCHULTE & ASSOCIATES INC.  
 planning architecture engineering  
 8450 B... National Pike... Baltimore, Maryland 21143

PROFILE SCALE: H=1"=50' V=1"=5'  
 CONTRACT NO. 24-1175-D-W&S

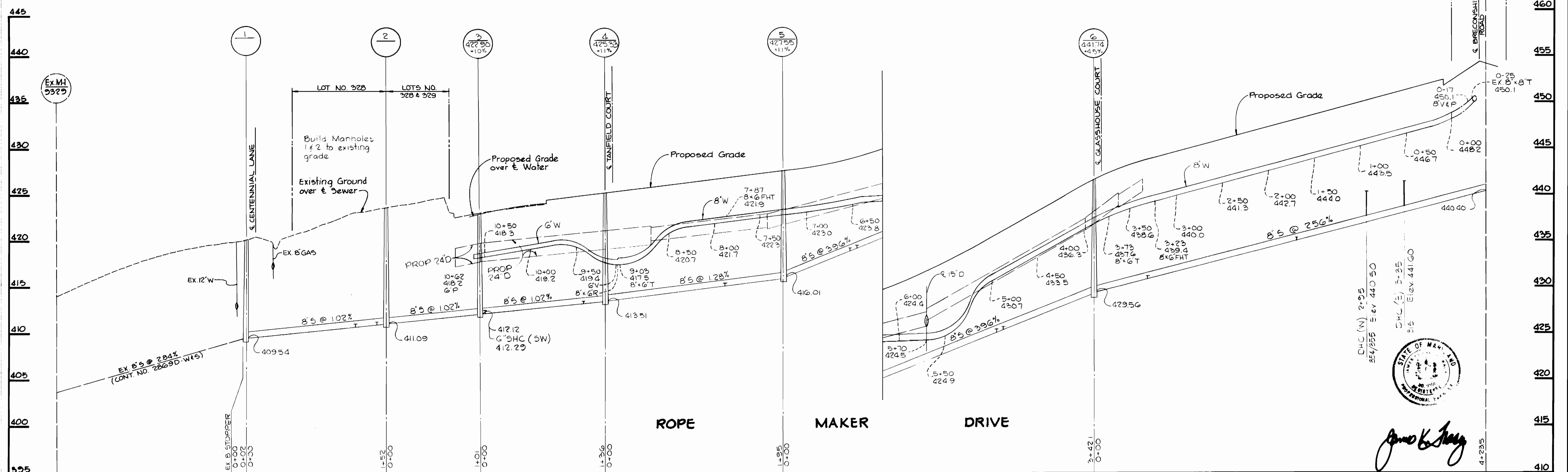
PLAN AND PROFILE  
 WATER AND SEWER MAINS

SECTION 4 AREA 5, LOTS 315 THRU 388, A RESUBDIVISION OF SECTION 4 AREA 3, LOTS 205 THRU 253, AND A RESUBDIVISION OF PART OF SECTION 4 AREA 4, PARCEL C AND LOTS 186 THRU 204.  
 BURLEIGH MANOR  
 ELECTION DISTRICT  
 ELLICOTT CITY NO. 2

DRAWING NO. 3 OF 4  
 SCALE AS SHOWN  
 JANUARY 10, 1984



SEWER HOUSE CONNECTION - INVERT ELEVATION AT PROPERTY-LINE											
STATION	LOT	INVERT	STATION	LOT	INVERT	STATION	LOT	INVERT	STATION	LOT	INVERT
1+17R	MH 1 TO MH 2	410.93	2+02R	MH 4 TO MH 7	426.01	0+45R	MH 10 TO MH 11	431.34			
1+40L	328	411.22	2+02R	341	426.01	0+45R	368	431.34			
			2+02R	340	426.01	0+45R	367	431.34			
0+00	MH 3 TO MH 4	413.25	2+02L	340	426.08	0+60L	375	431.77			
0+05L	331	413.37	2+09L	333	434.26	0+60L	372	431.77			
0+05L	332	413.37	2+33L	334	434.26	2+07R	366	432.90			
1+12R	326	413.56	2+52R	339	434.76	2+07R	365	432.90			
1+12R	327	413.56	2+52R	338	434.67	2+12L	375	433.23			
			@ MH	337	435.37	2+12L	374	433.23			
			@ MH	336	435.37	2+08L	376	434.15			
0+78R	MH 4 TO MH 5	414.95									
1+59R	324	415.87	1+26R	MHG TO MH 6	434.84	0+14R	MH 11 TO MH 12	434.72			
	325	415.87	1+26R	353	434.84	0+14R	363	434.72			
0+72L	MH 5 TO MH 6	419.18	2+31R	350	433.16	0+24L	377	435.30			
0+72L	343	419.18	2+31R	350	433.16	1+58L	379	439.32			
0+79R	342	419.18	2+55L	347	438.94	1+58L	378	439.32			
0+79R	323	419.50	2+55L	346	438.94	1+73R	362	439.49			
2+32L	349	425.84	@ MH	348	439.88	1+73R	361	439.49			
2+32L	344	425.84									
2+39R	321	425.83	MH 9 TO MH 10	369	430.35	0+39L	MH 12 TO MH 13	443.21			
2+39R	320	425.83	371	430.75	0+39L	381	443.21				
			@ MH R	368	430.75	1+22R	360	445.62			
0+58R	MH 6 TO EX MH 9376	431.41	@ MH R	367	430.60	1+22R	359	445.62			
0+58R	319	431.41	@ MH R	367	430.60	2+00L	383	450.30			
0+58R	318	431.41				2+00L	382	450.30			
2+19R	317	435.53									
2+19R	316	435.53									
2+36L	355	441.10									
2+36L	354	441.10									
2+36R	315	441.90									



DEPARTMENT OF PUBLIC WORKS  
HOWARD COUNTY, MARYLAND

Director: *Harold F. Neuman* 2-17-84  
Chief - Bureau of Engineering: *Robert M. Beinger* 1-17-84

TRACY, SCHULTE & ASSOCIATES INC.  
planning architecture engineers

CONTRACT NO. 24-1175-D-W&S

PROFILES  
WATER AND SEWER MAINS

BURLEIGH MANOR  
ELECTION DISTRICT  
ELLCOTT CITY NO. 2

DRAWING NO. 4  
SCALE: H<sup>1</sup>" = 50'  
V<sup>1</sup>" = 5'

SECTION 4 AREA 5, LOTS 315 THRU 388, A RESUBDIVISION OF SECTION 4 AREA 3, LOTS 205 THRU 253, AND A RESUBDIVISION OF PART OF SECTION 4 AREA 4, PARCEL C AND LOTS 186 THRU 204. Burleigh Manor Section 4 Area 5 Cont. No. 24-1175D-W45